

Criminal Justice Coordinating Council

Population Report & Program Trends

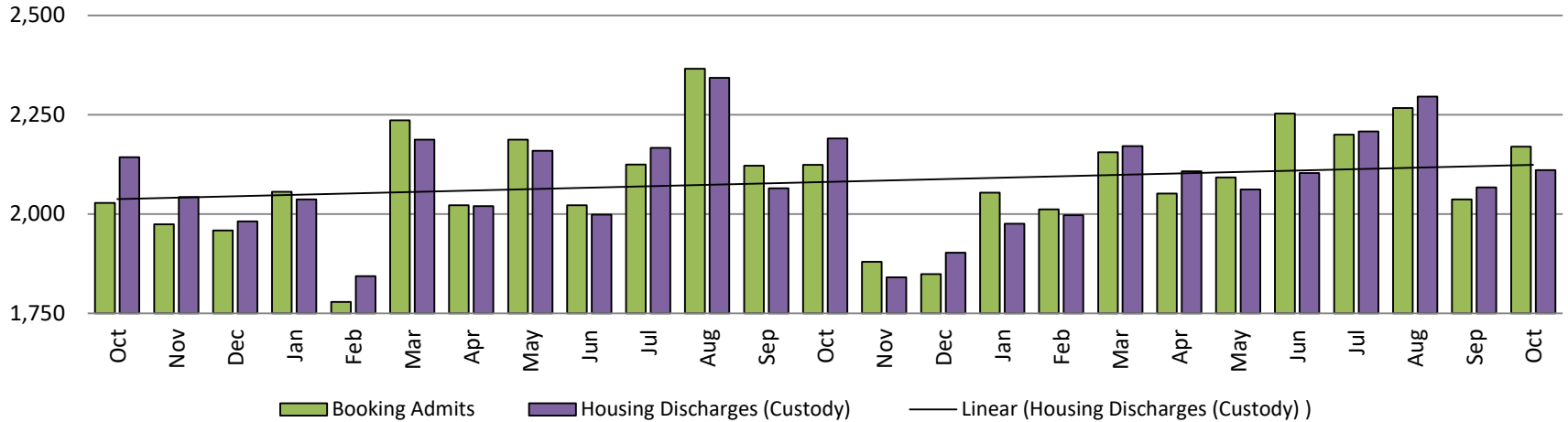
November 2019



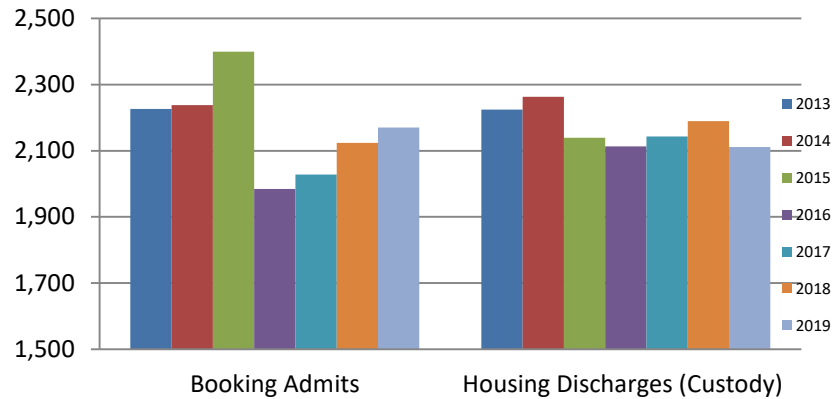
Sedgwick County...
working for you

Detention Facility

Booking Admits & Housing Discharges from Custody October 2017-Present

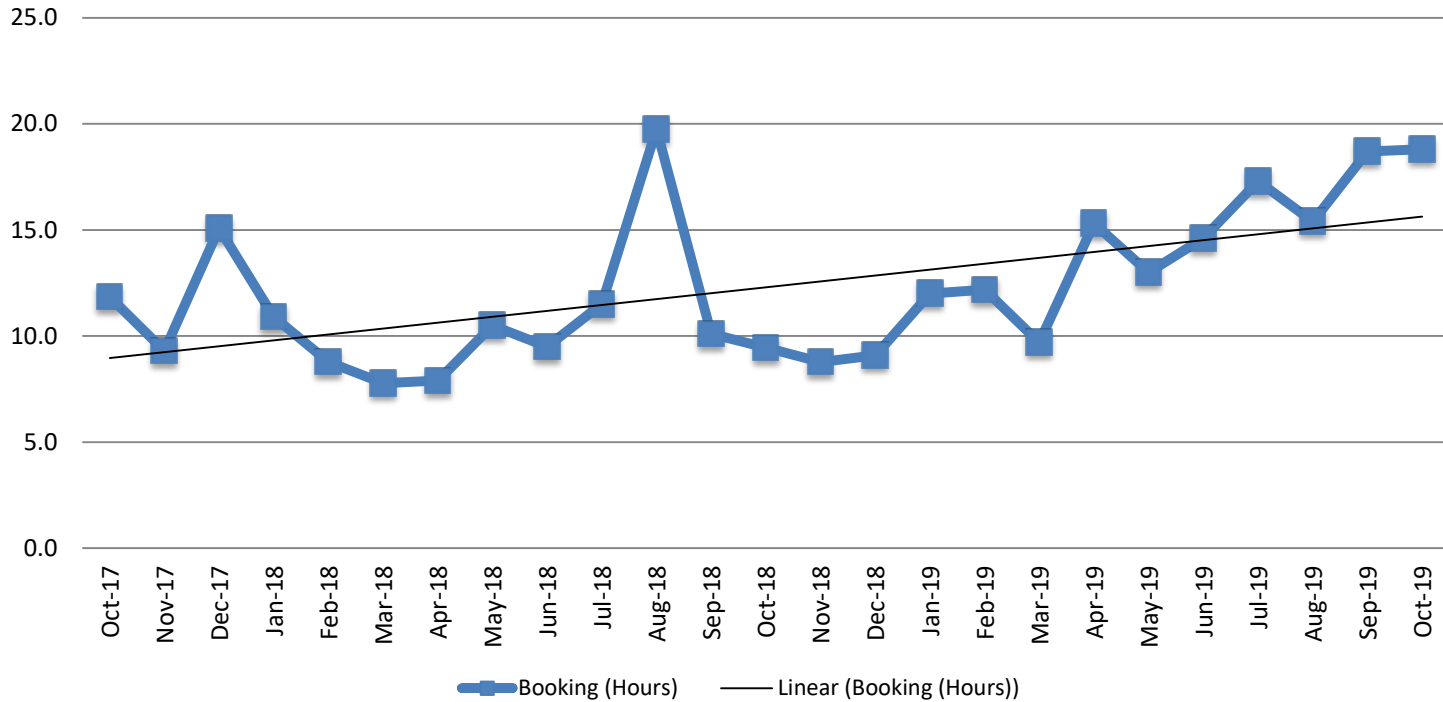


Bookings Year over Year: Month of October



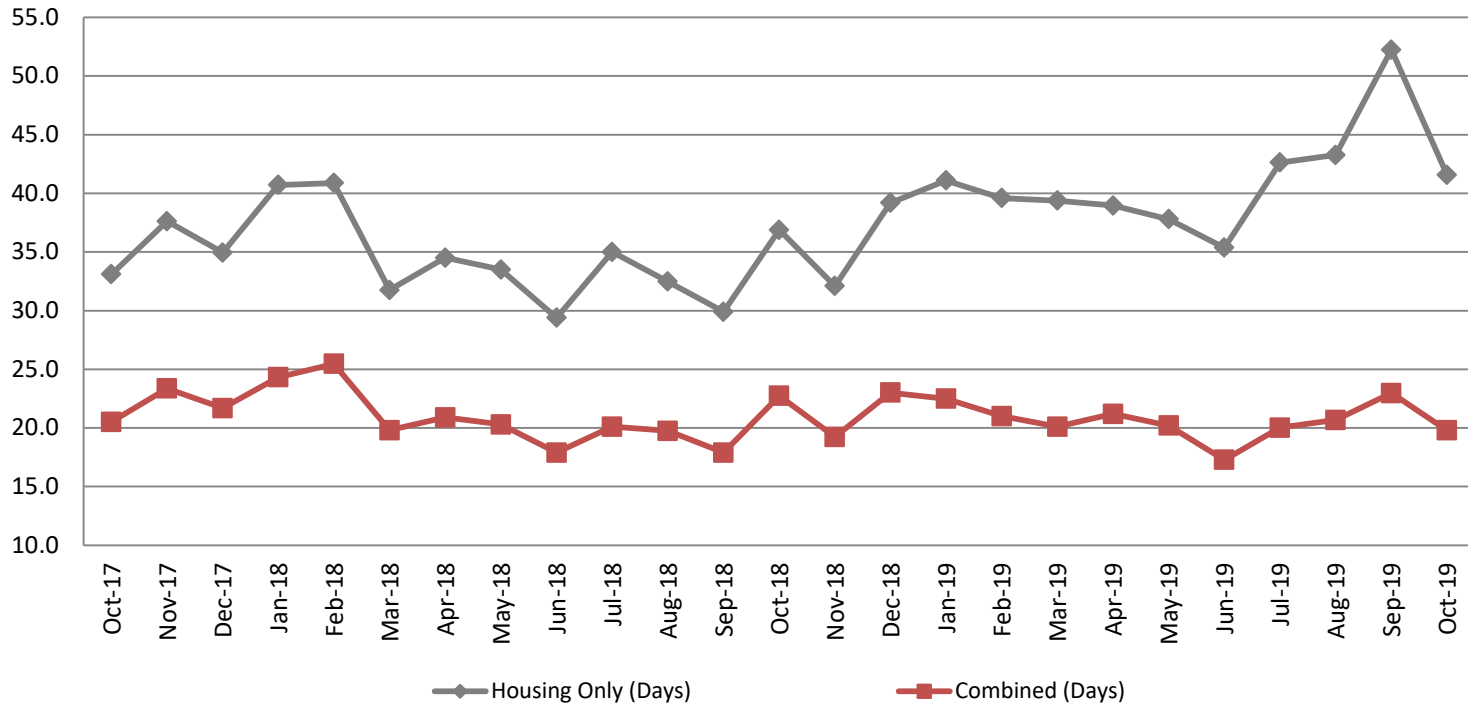
Bookings October	Housing Discharges October
2017: 2,028	2017: 2,143
2018: 2,124	2018: 2,190
2019: 2,170	2019: 2,111

Average Length of Stay: Booking (Hours) October 2017 - Present



October	October YTD Average
2017: 11.9	2017: 17.2
2018: 9.5	2018: 10.6
2019: 18.8	2019: 14.7

Average Length of Stay: Housing & Combined (Days) October 2017 - Present

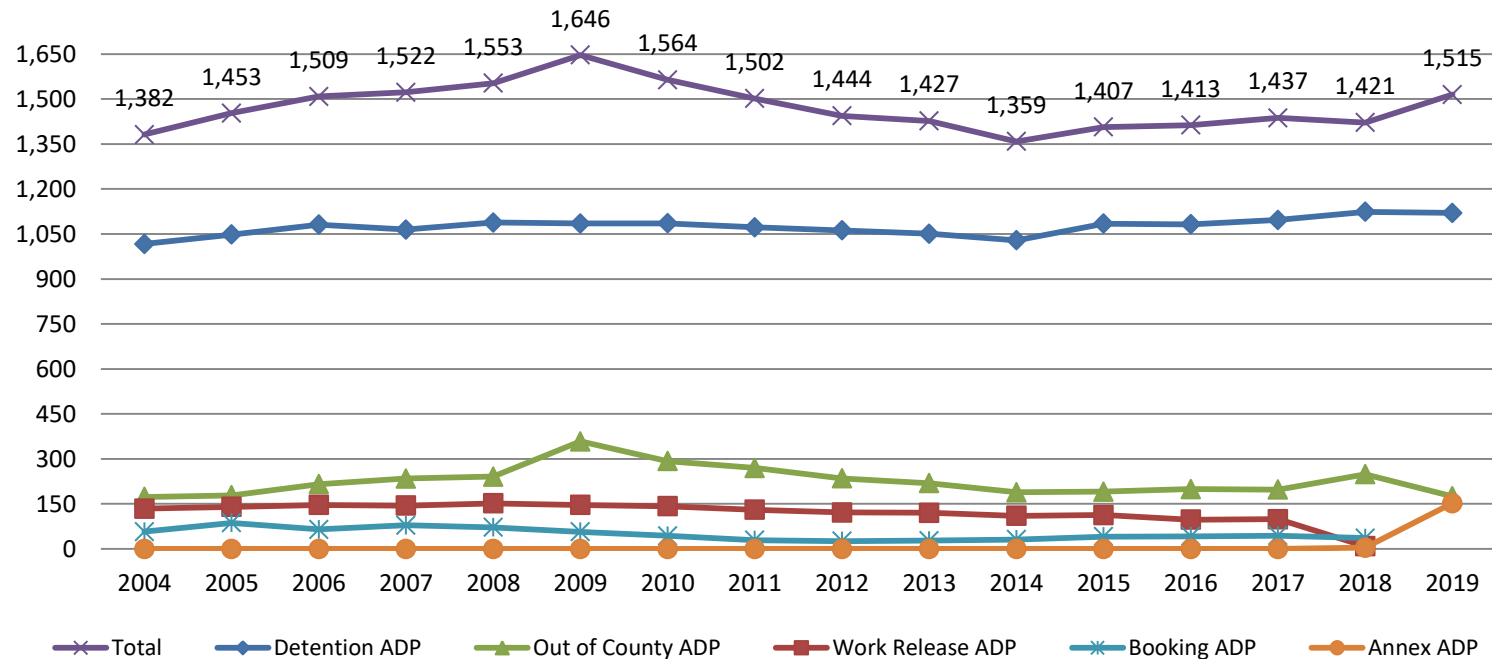


Month Year	Housing Only	Housing YTD AVG	Combined Days	Combined YTD AVG
October 2017	33.1	34.9	20.5	20.1
October 2018	36.9	34.5	22.7	20.9
October 2019	41.6	41.2	19.8	20.6

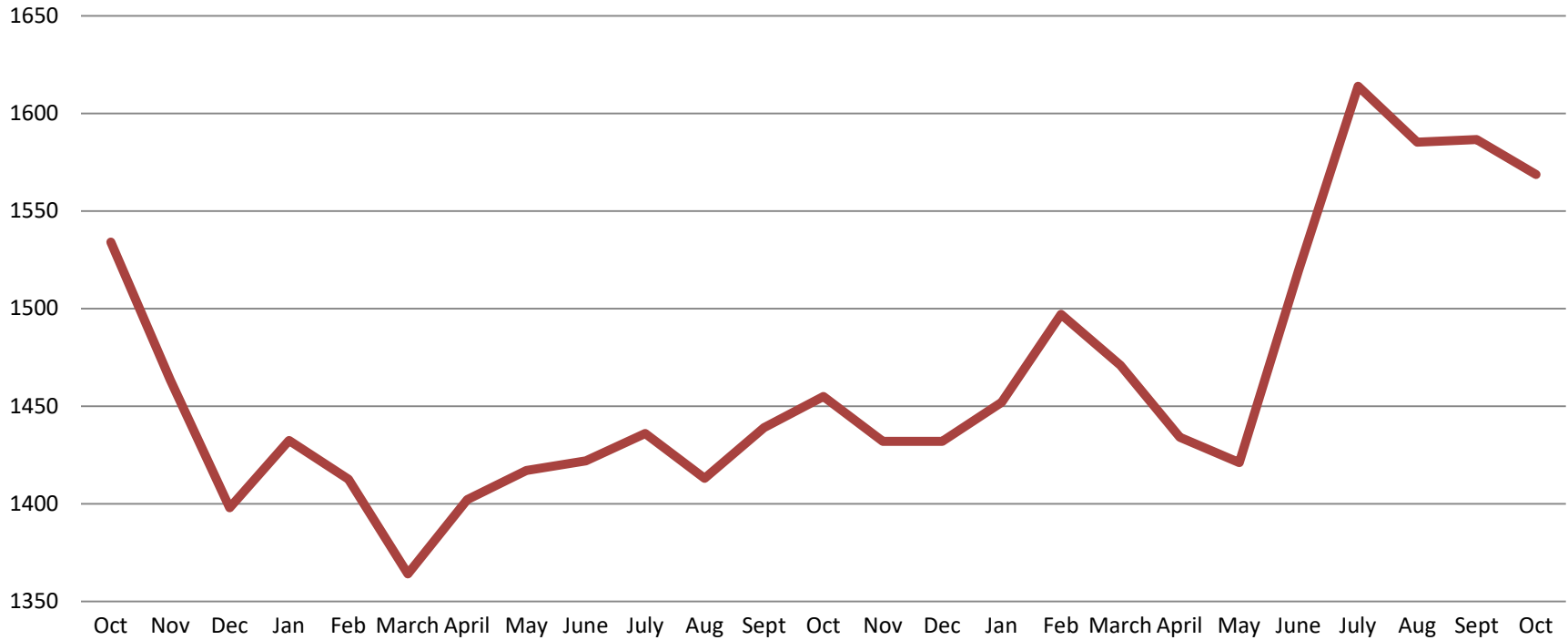


Jail: Annual Average Daily Population (ADP)

TRENDS: Booking, Detention, Work Release, & Out of County
Annual ADP: 2004 - present

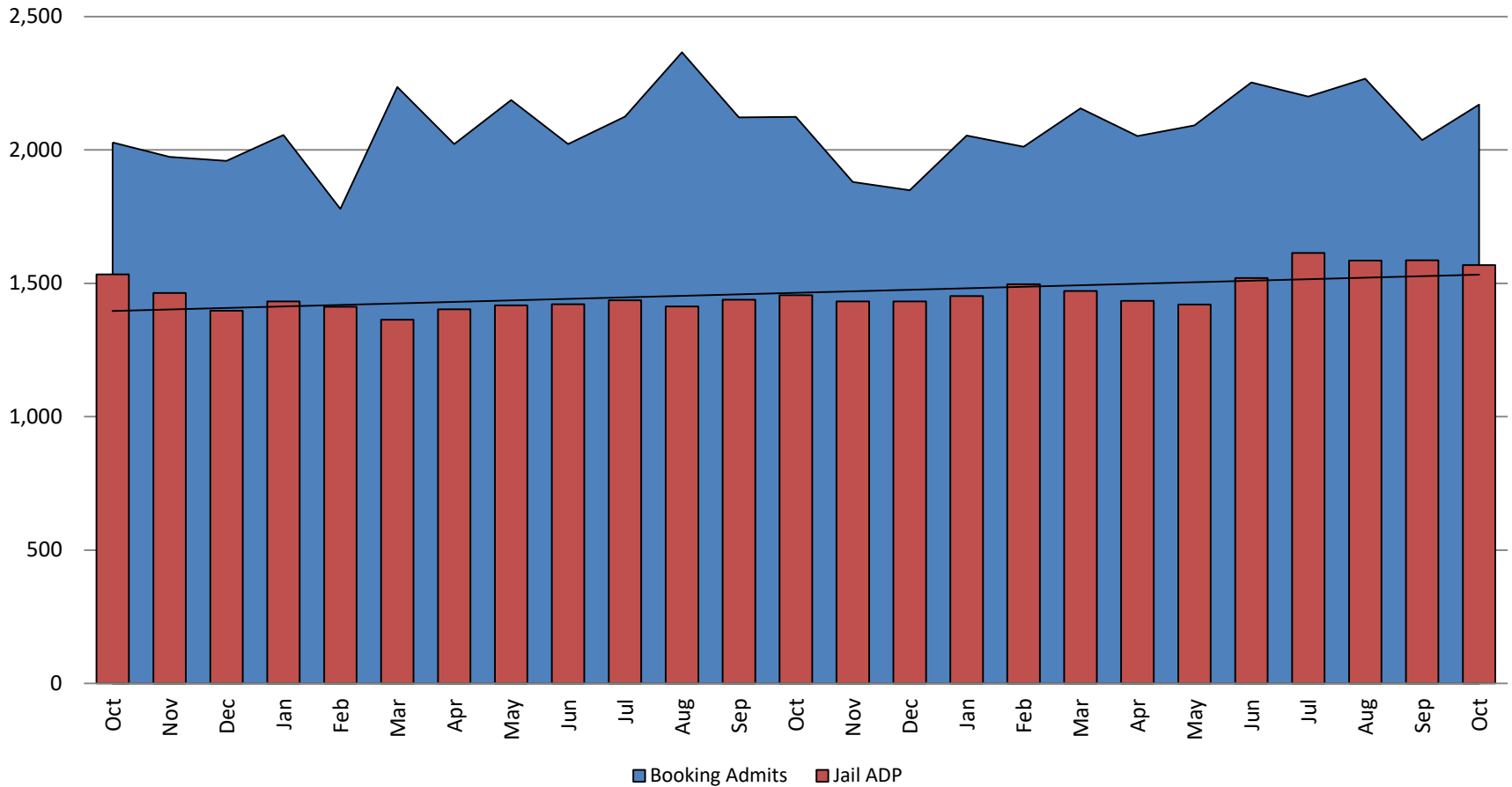


TOTAL MONTHLY ADP: JAIL (Booking, Detention Facility, Annex, & Out of County) October 2017 - present



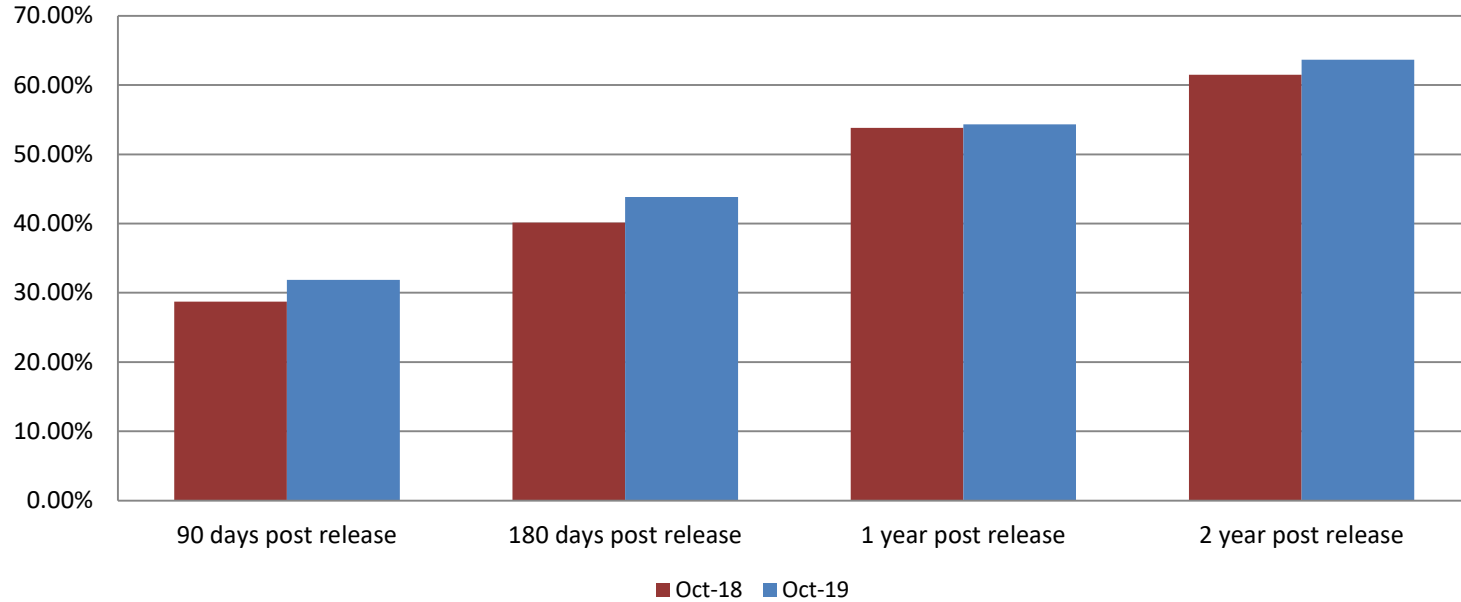
October 2017	October 2018	October 2019
1,534	1,455	1,569

Booking Admits & Total Monthly ADP (Jail): October 2017 - present



Jail includes individuals in booking, detention, work release and out-of county (combined)
(data obtained from detention facility)

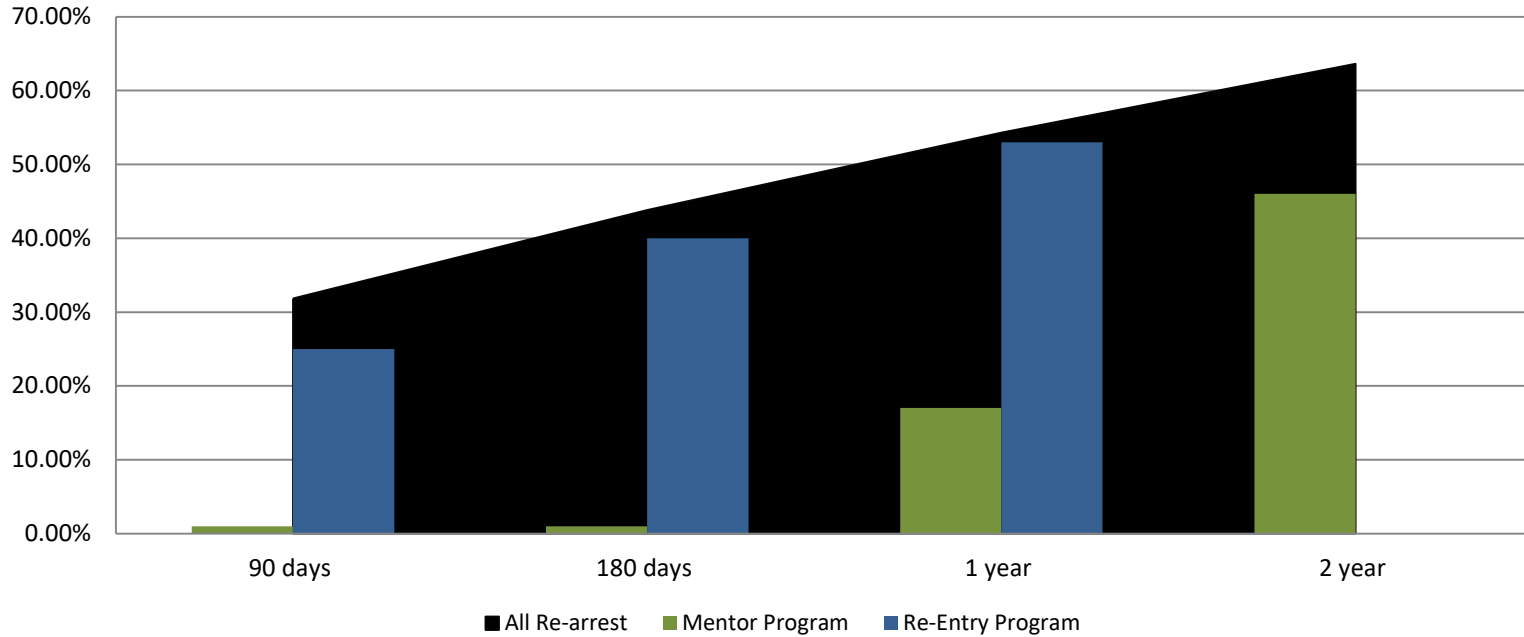
Percent of released inmates rearrested October



Month Year	90 Days	180 Days	1 Year	2 Years
October 2018	28.74%	40.13%	53.83%	61.47%
October 2019	31.84%	43.83%	54.31%	63.64%



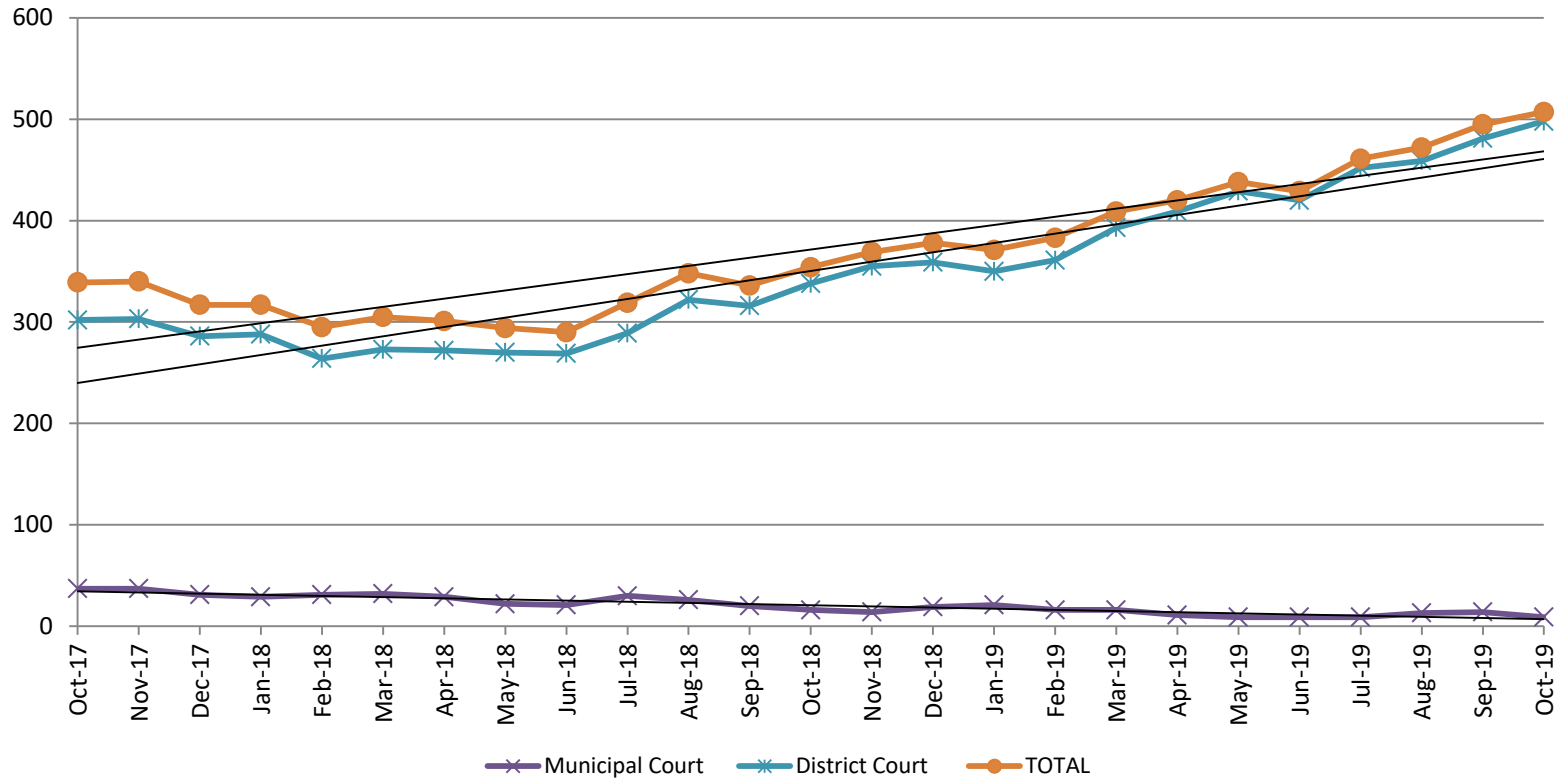
Recidivism by Programs October 2019



October 2019	90 Days	180 Days	1 year	2 years
All Re-arrests	31.84%	43.83%	54.31%	63.64%
Mentor Program	1%	1%	17%	46%
Re-Entry Program	25%	40%	53%	N/A



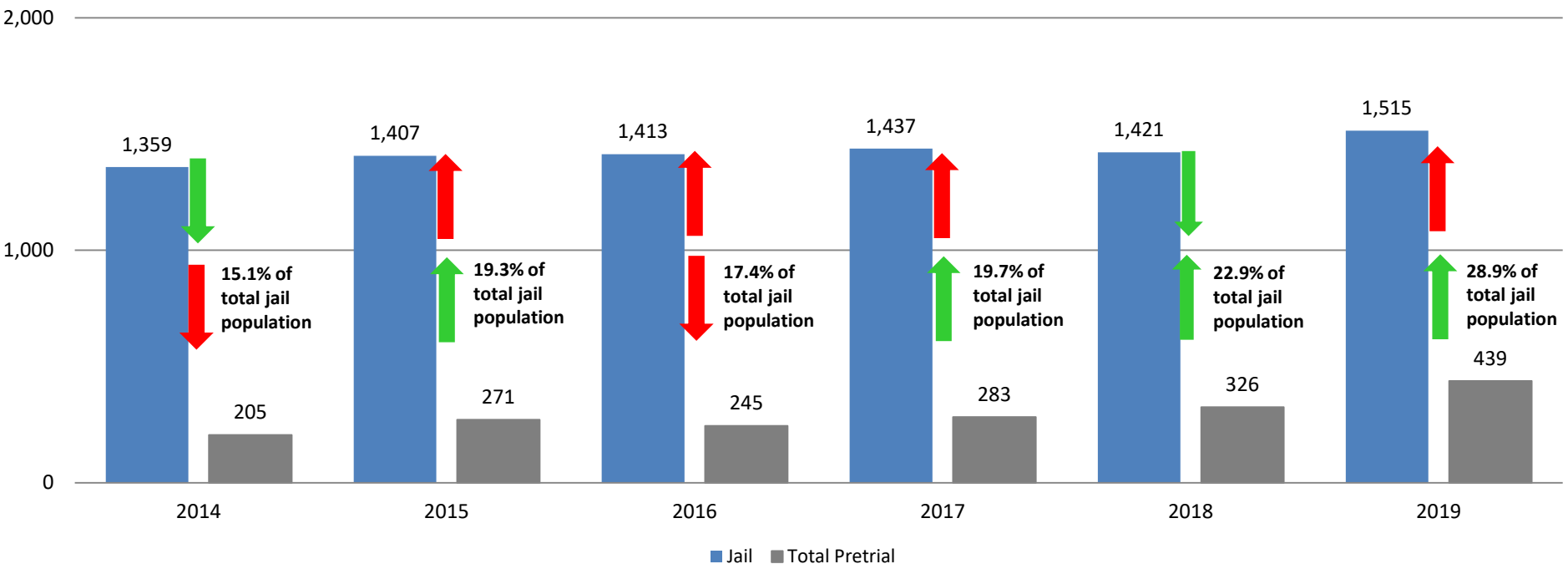
Pretrial Services Program (PSP) Monthly ADP: October 2017 - Present



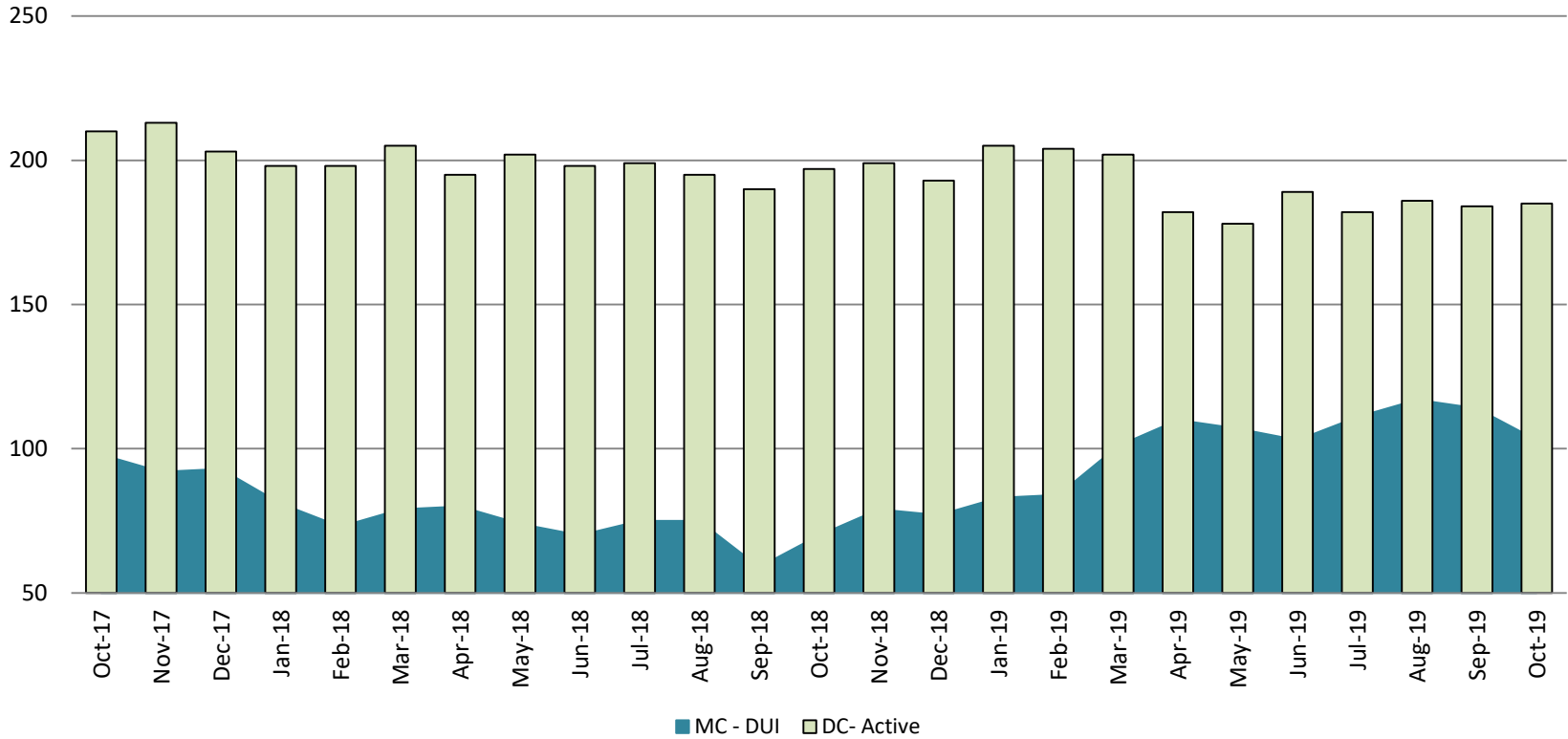
October	2017 ADP	2018 ADP	2019 ADP	2017 YTD Avg.	2018 YTD Avg.	2019 YTD Avg.
Muni. Court	37	16	9	36	26	13
Dist. Court	302	338	498	238	290	425
Total	339	354	507	274	316	439

Correlation: Total & PSP

Total Annual ADP: 2014 - Present

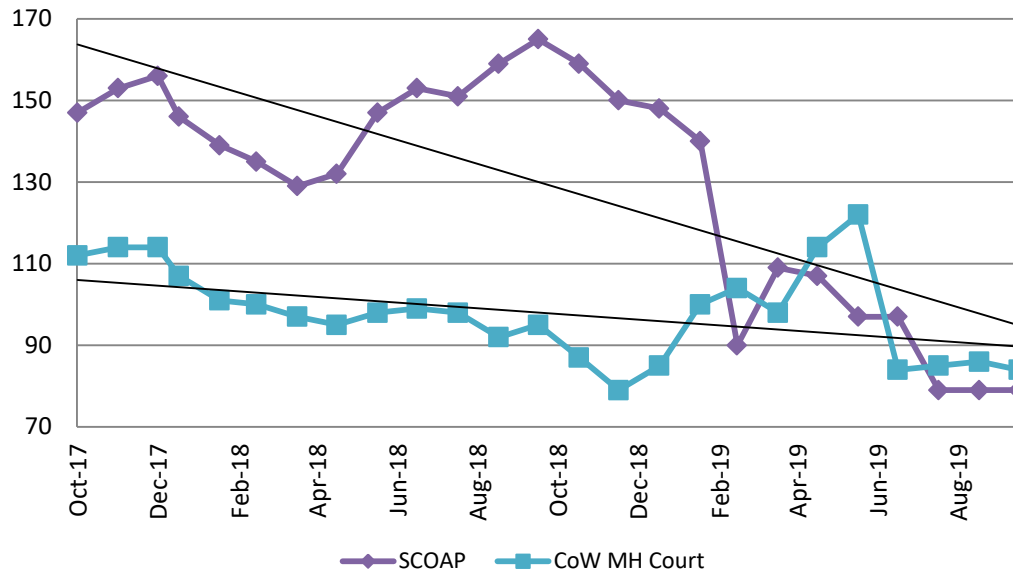


Diversion - Active Caseload October 2017- Present

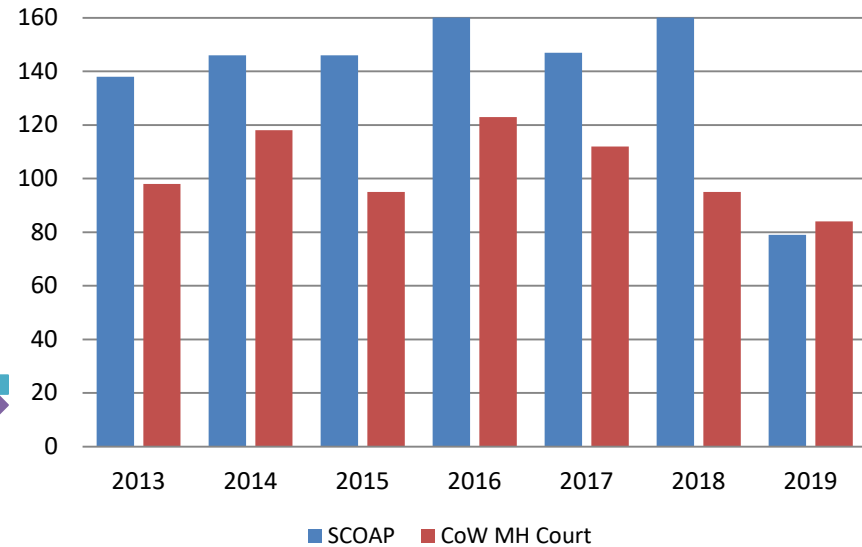


October	2017	2018	2019	2017 YTD Avg.	2018 YTD Avg.	2019 YTD Avg.
Muni. Court- DUI	98	70	103	86	74	103
Dist. Court- Active	210	197	185	225	198	190

Mental Health - ADP October 2017 - present

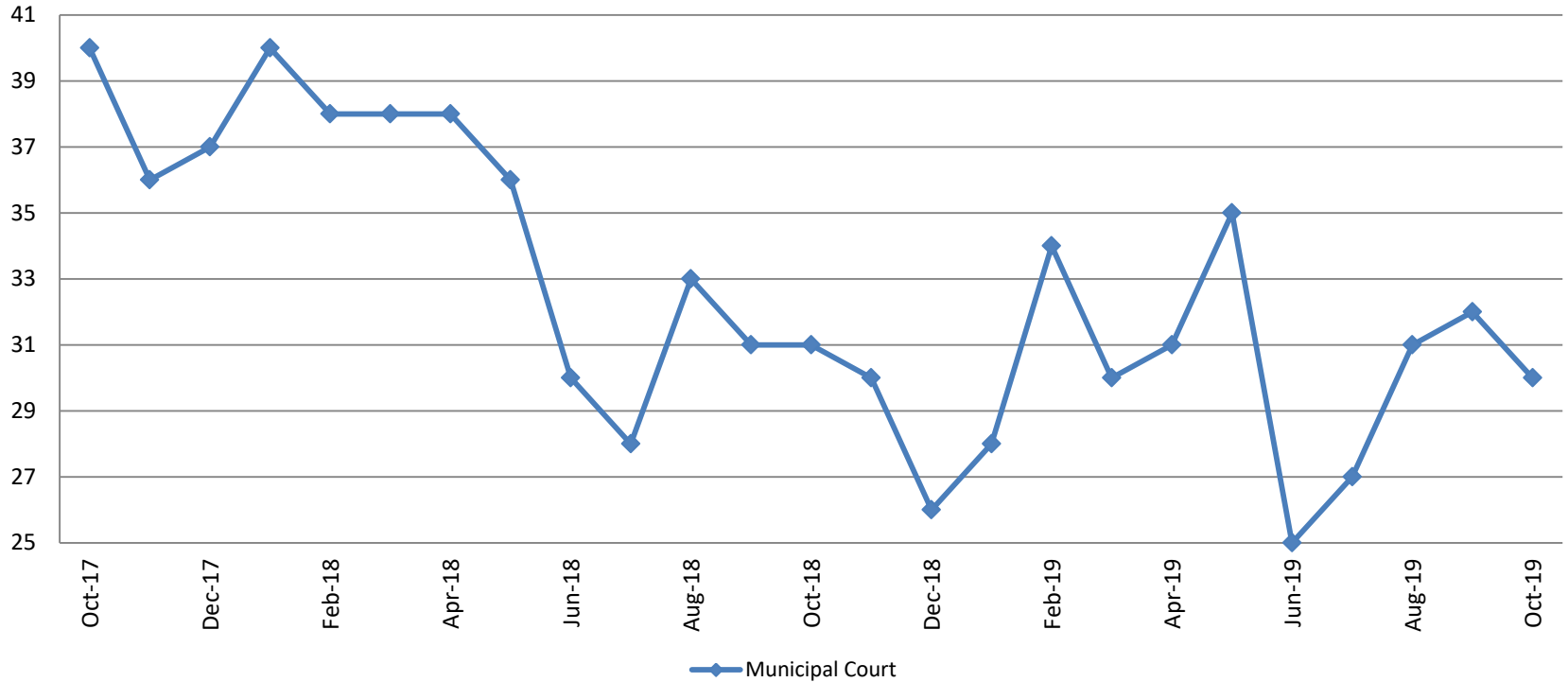


Mental Health ADP Year over Year- October



October	2017 ADP	2018 ADP	2019 ADP	2017 YTD Avg.	2018 YTD Avg.	2019 YTD Avg.
SCOAP	147	165	79	149	146	103
MH Court	112	95	84	116	98	96

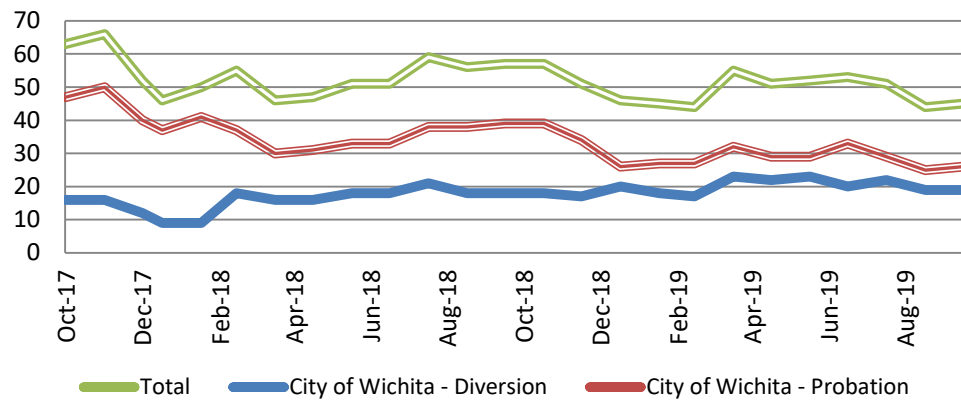
Day Reporting - Active Caseload October 2017 - Present



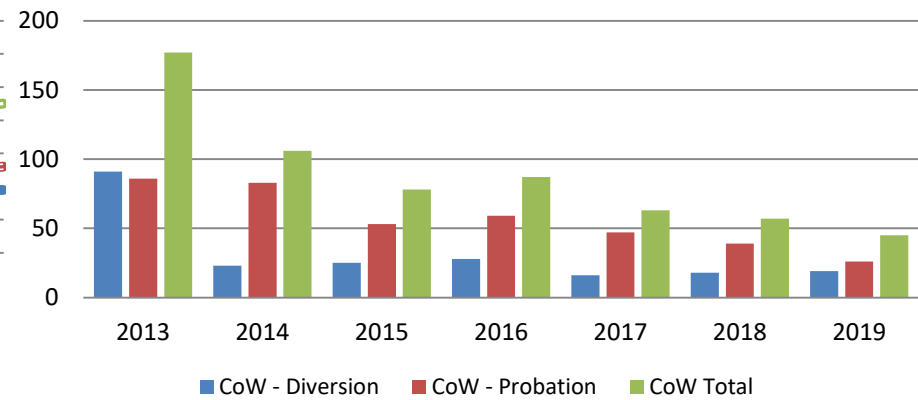
October	2014	2015	2016	2017	2018	2019
Muni. Court	57	60	31	40	31	30
Muni. Court YTD Avg.	69	70	41	36	34	30



Drug Court - City of Wichita ADP: October 2017 - present



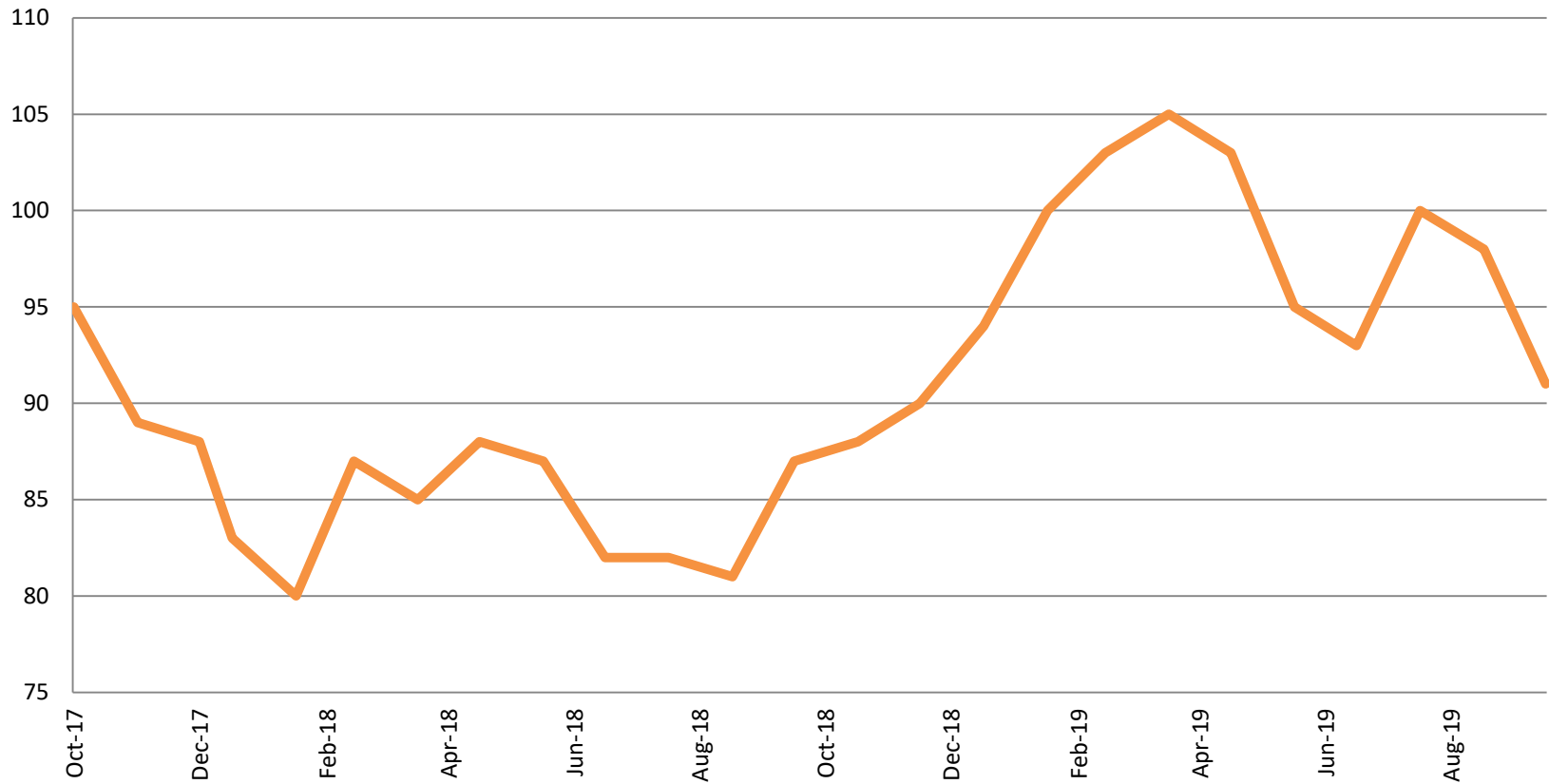
Drug Court- City of Wichita Year over Year - October



October	2017	2018	2019
Diversion	16	18	19
Probation	47	39	26
Total	63	57	45



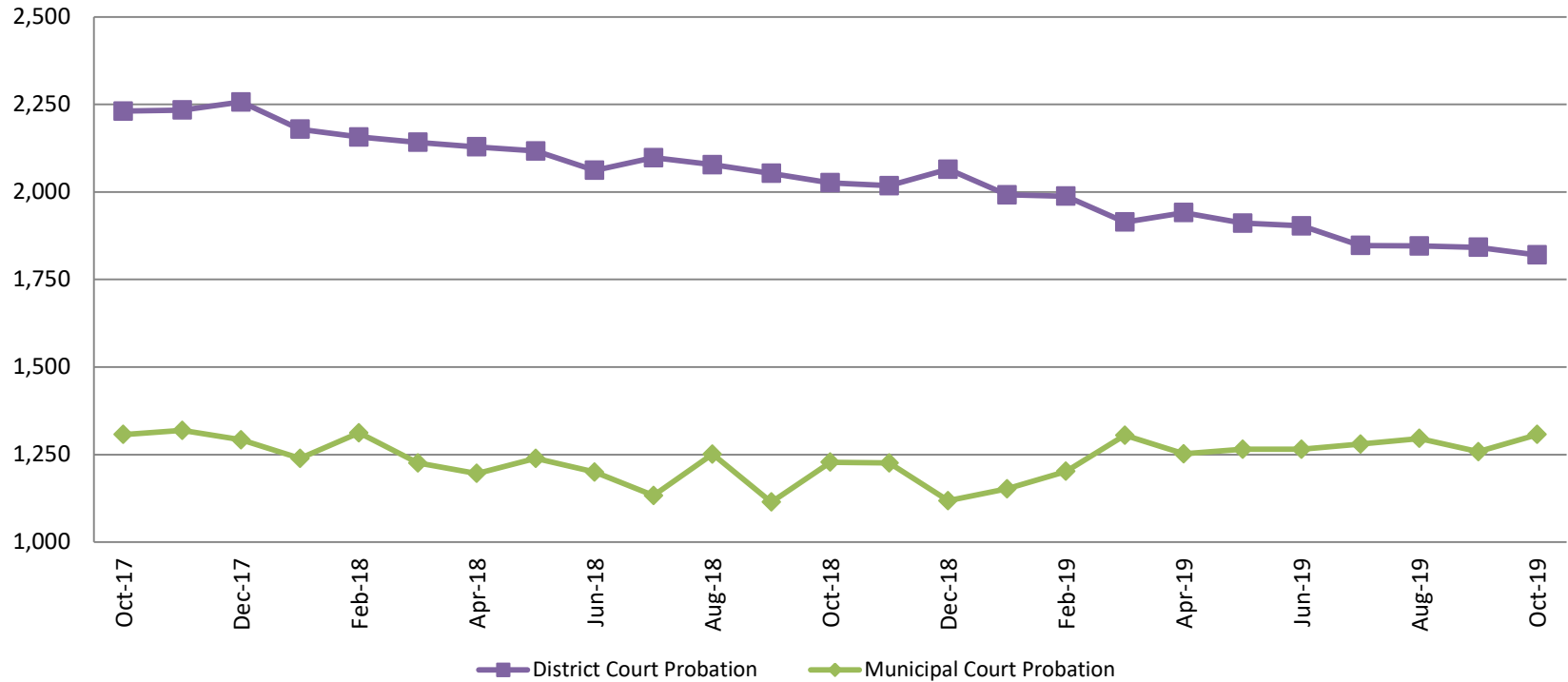
Drug Court - Sedgwick County ADP: October 2017 - present



	October	2017	2018	2019
Sedg. Co. ADP	95	87	87	91
YTD Avg.	97	84	84	98



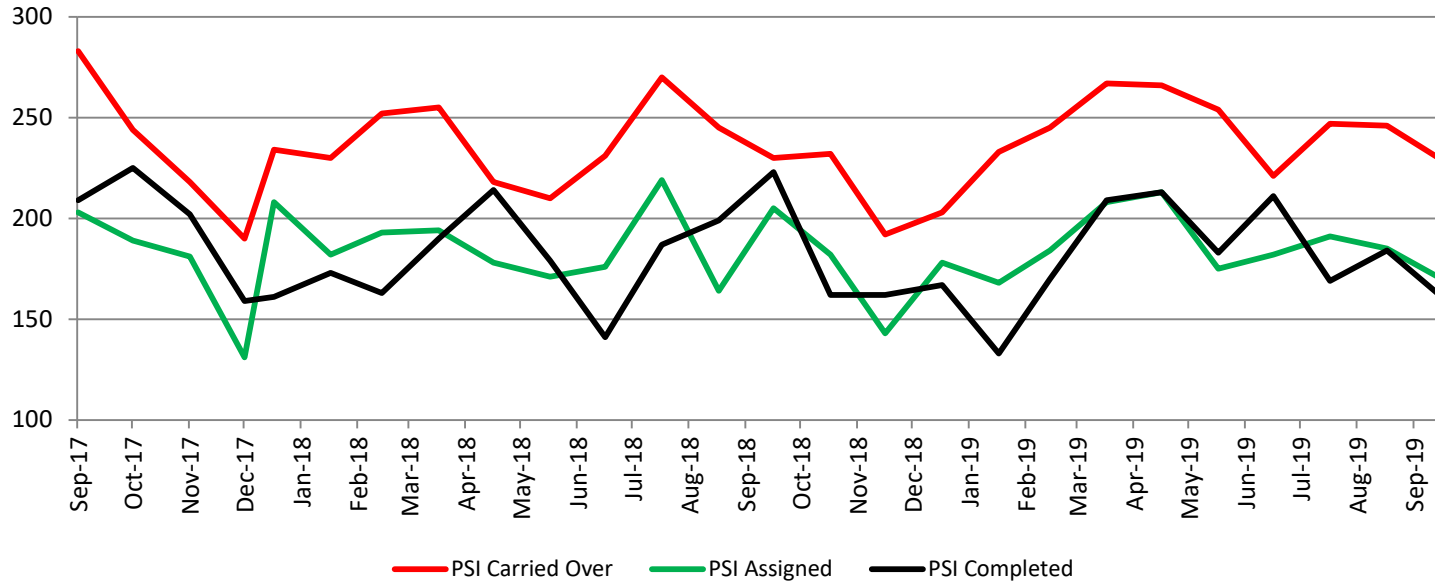
Probation - Active Caseloads October 2017 - present



October	2017	2018	2019	2017 YTD Avg.	2018 YTD Avg.	2019 YTD Avg.
Dist. Court Probation	2,231	2,026	1,820	2,254	2,104	1,900
Muni. Court Probation	1,307	1,228	1,307	1,297	1,214	1,258



District Court Probation: Pre-Sentence Investigation October 2017 - present

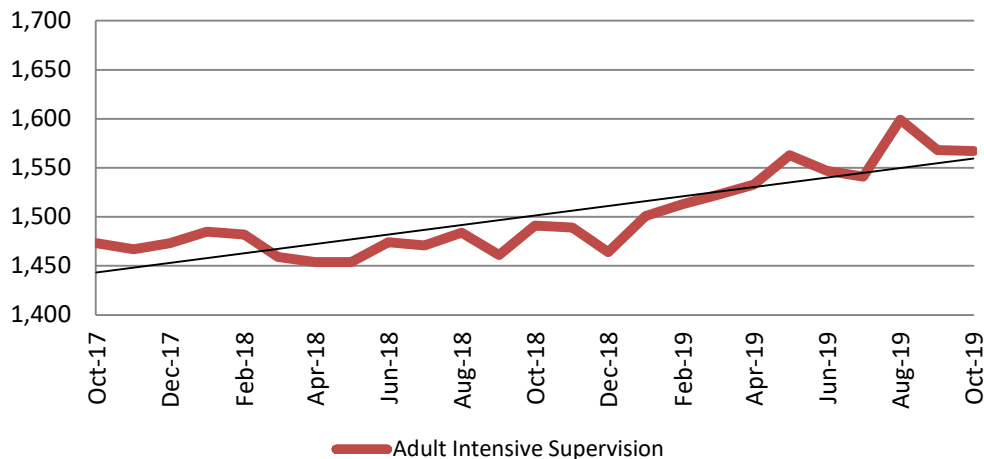


October	2017	2018	2019
Carried Over	244	230	229
Assigned	189	205	170
Completed	225	203	161



Community Corrections

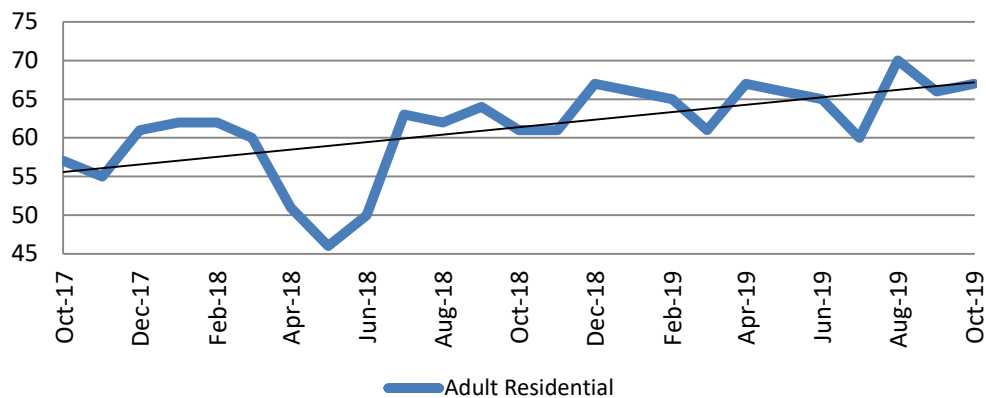
**Adult Intensive Supervision Probation (AISP):
ADP October 2017- present**



Year	October	October YTD Avg.
2017	1,473	1,537
2018	1,491	1,472
2019	1,567	1,545

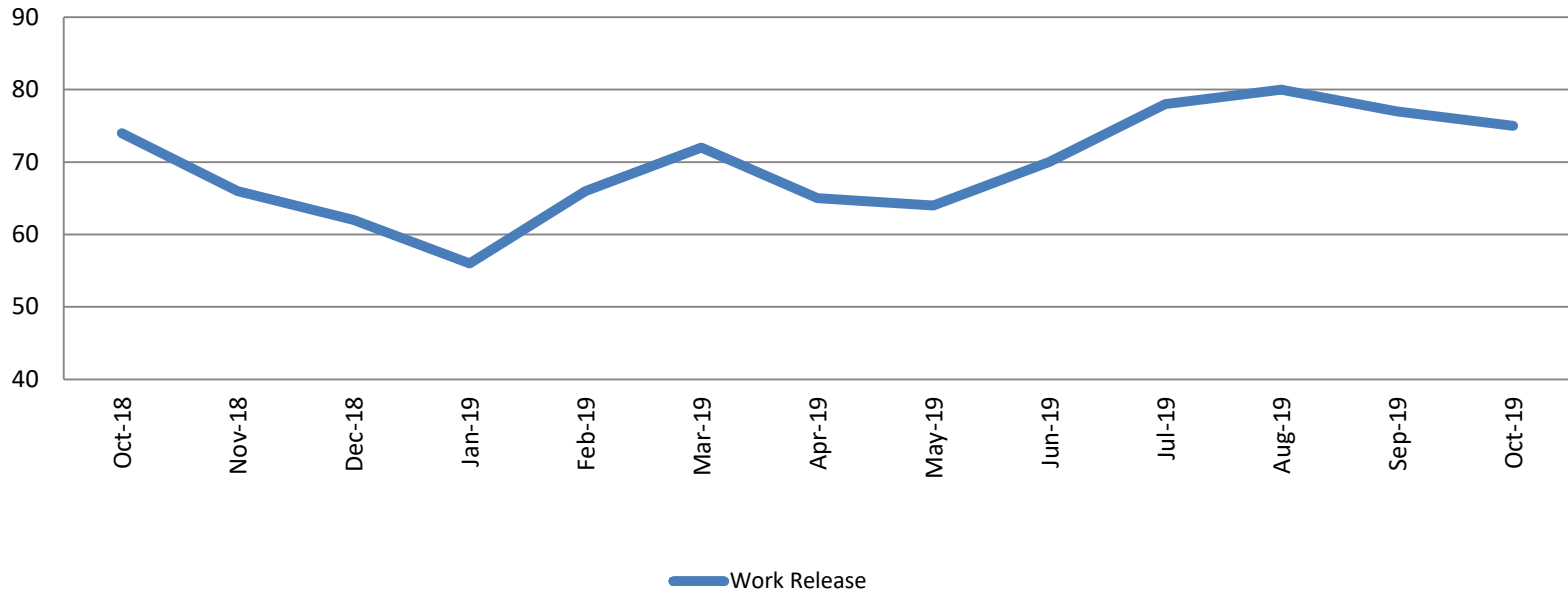
Year	October	October YTD Avg.
2017	57	59
2018	61	58
2019	67	65

**Adult Residential: ADP
October 2017 - present**



Community Corrections

Work Release: ADP October 2018 - present

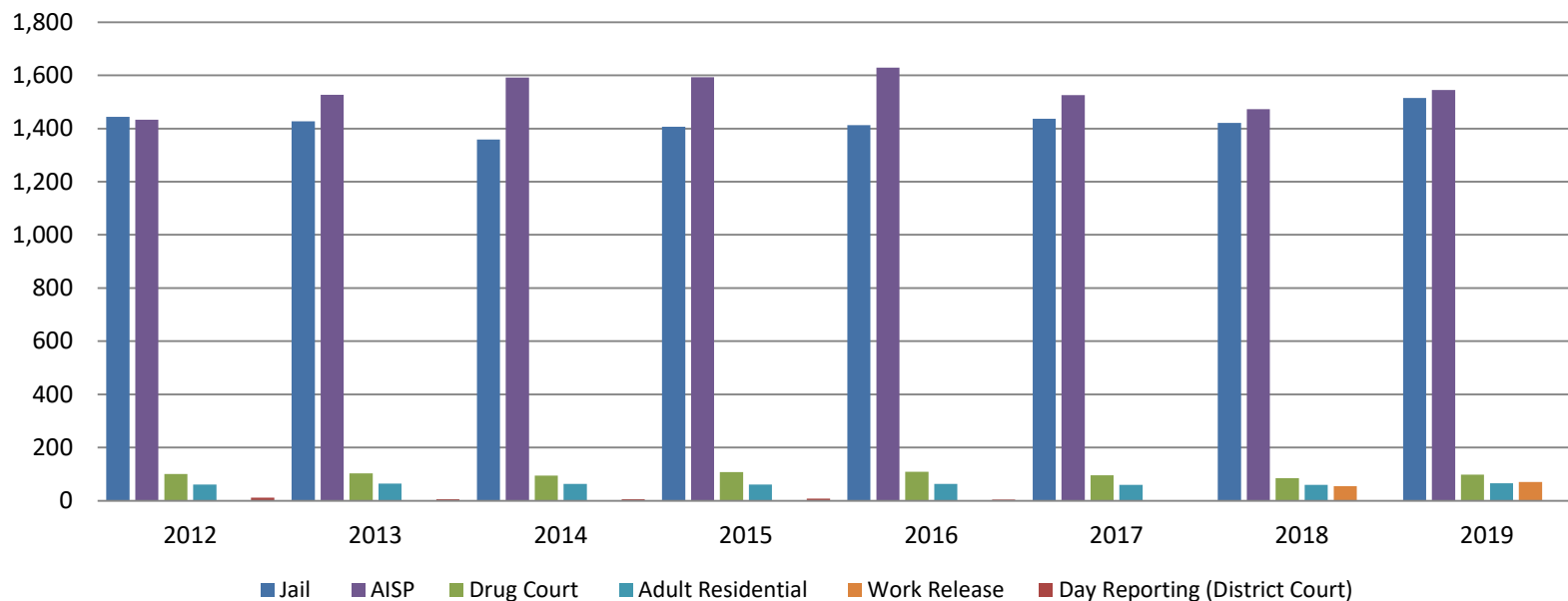


Month Year	Total	YTD Avg.
October 2018	74	53
October 2019	75	70



Correlation: Total & Sedgwick County Programs (Adult)

Total Annual ADP 2012-Present

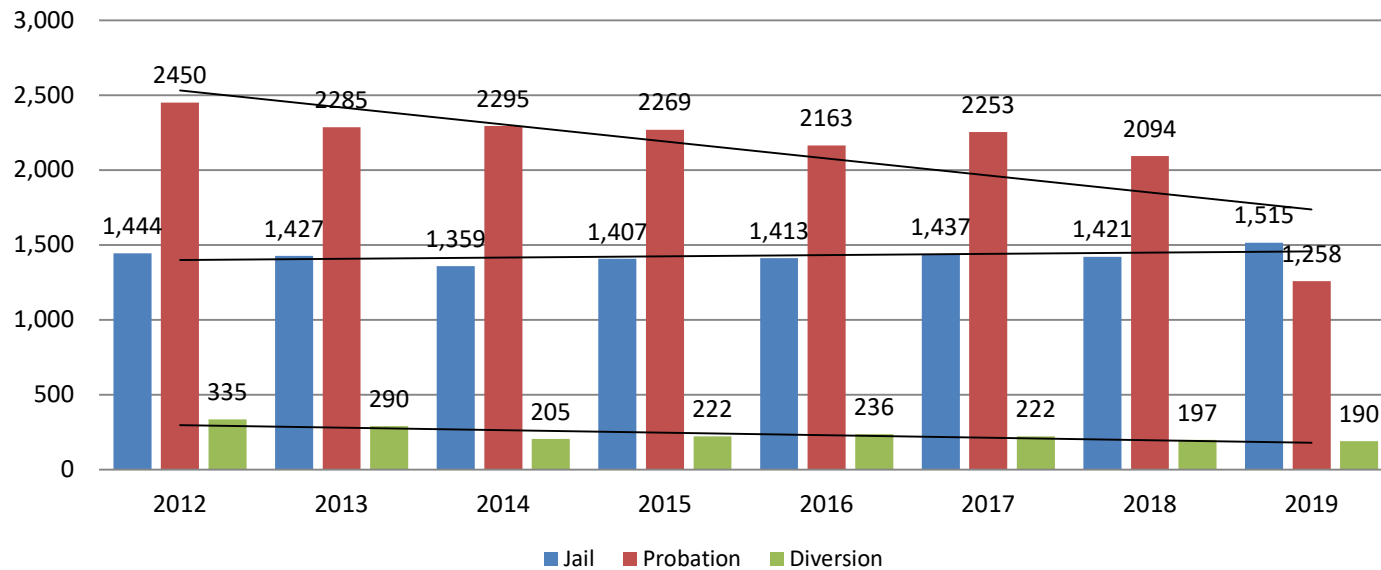


	2017	2018	2019
Jail	1,437	1,421	1,515
AISP	1,526	1,472	1,545
Drug Court	96	85	98
Adult Residential	59	59	65
Work Release	0	55	70
Day Reporting (DC)	0	0	0



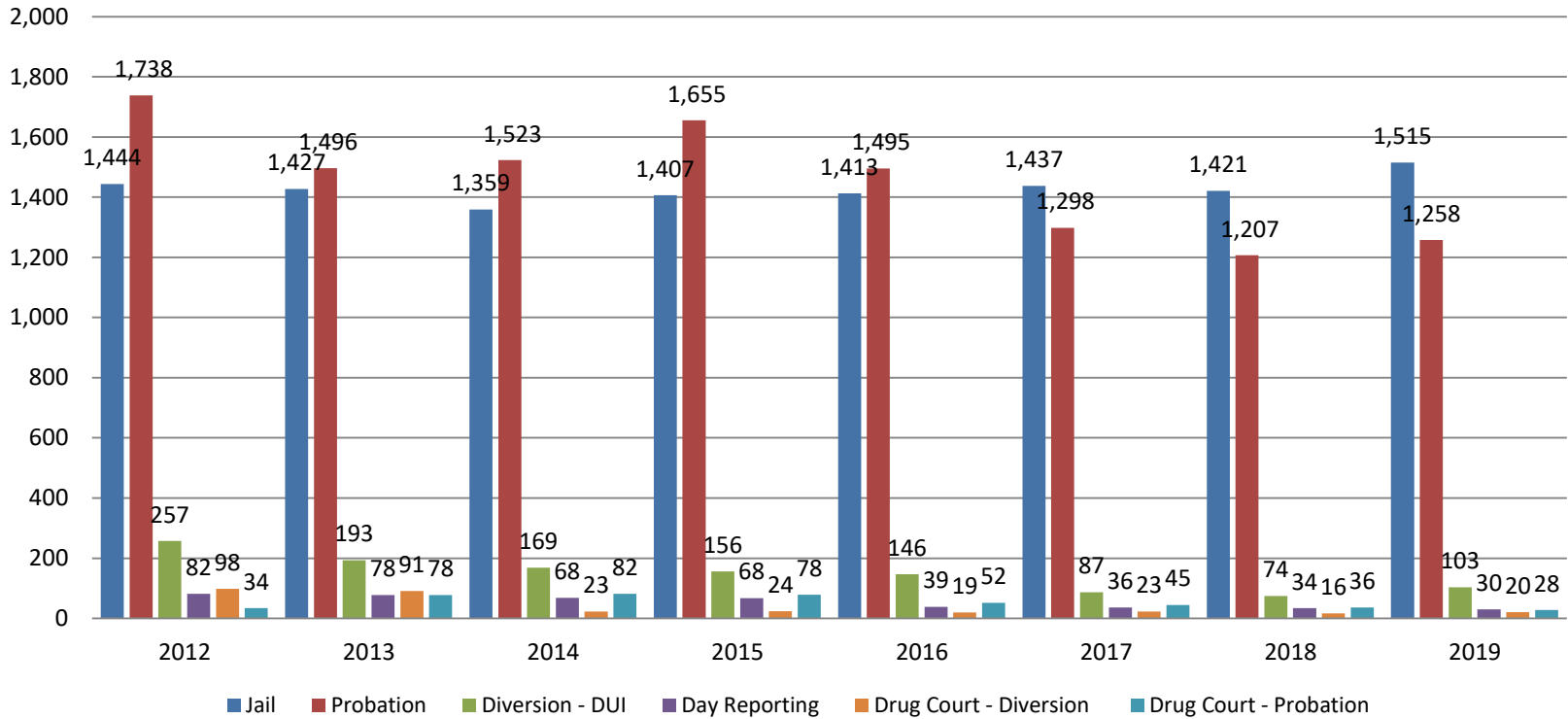
Correlation: Total & District Court Programs

Total Annual ADP: 2012 - Present



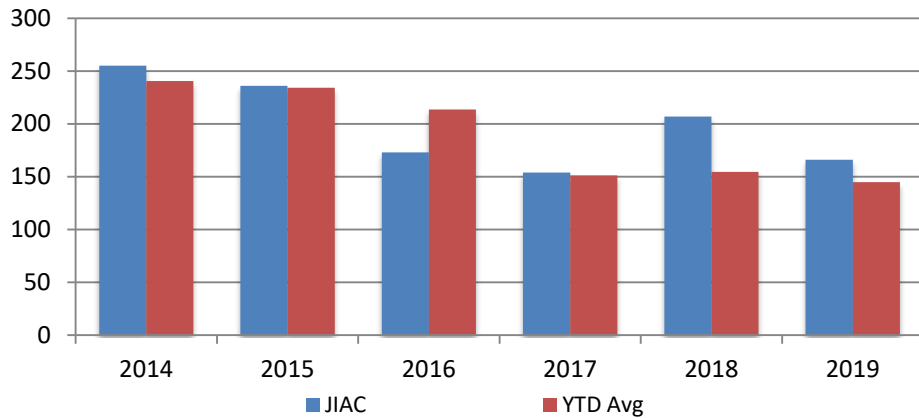
Correlation: Total & City of Wichita / Municipal Court Programs

Total Annual ADP: 2012 - present



Juvenile

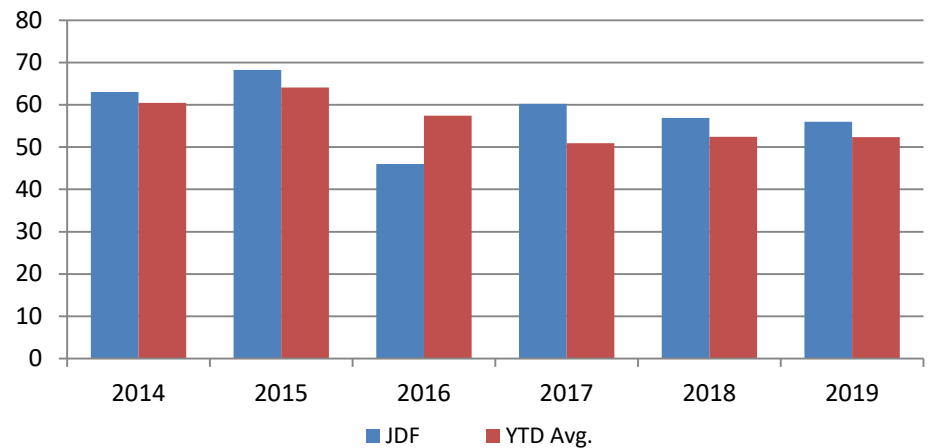
JIAC Intakes
October 2014 - present



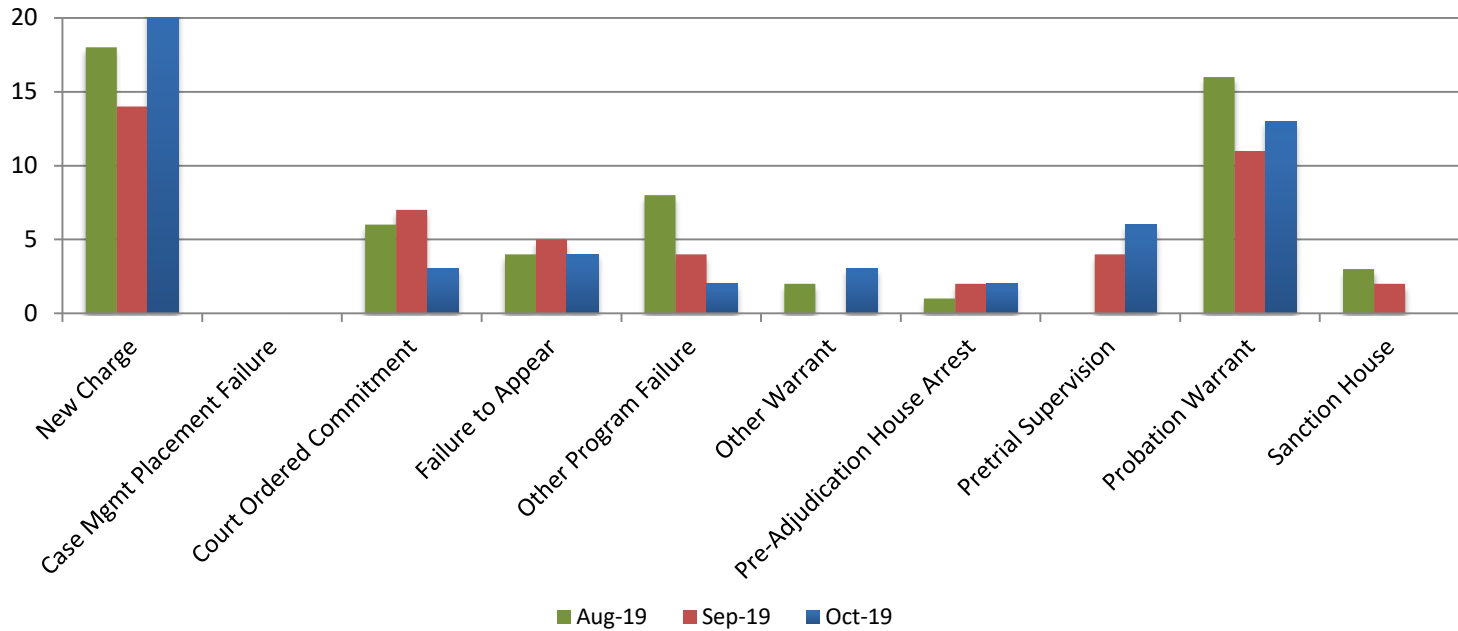
Year	October	October YTD Avg.
2014	255	241
2015	236	234
2016	173	214
2017	154	151
2018	207	155
2019	166	145

Year	October	October YTD Avg.
2014	63	61
2015	68	64
2016	46	57
2017	60	51
2018	57	52
2019	56	52

JDF ADP
October 2014 - present



Reason for JDF Admits



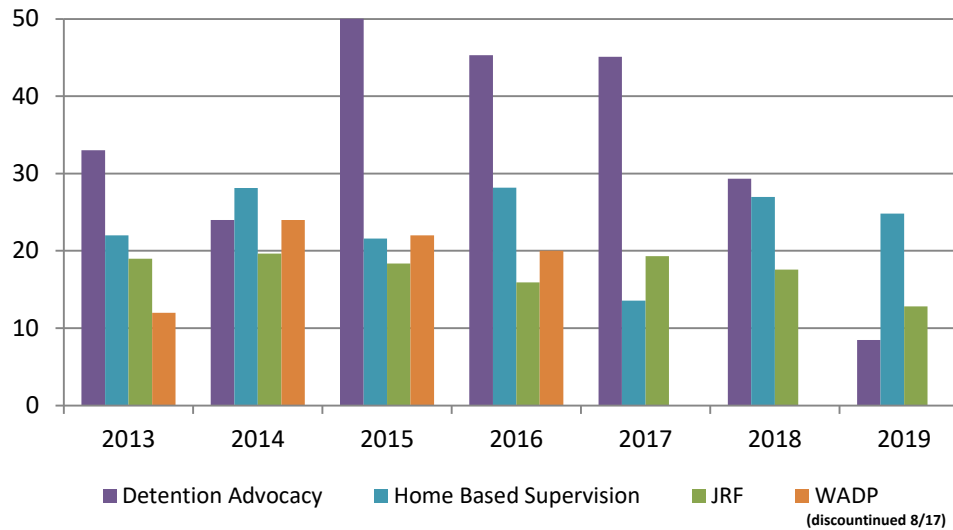
Reason for JDF Admits

Reason	October 2018	October 2019
New Charges	13	23
Case Management Placement Failures	0	0
Court Ordered Commitment	20	3
Failure to Appear	5	2
Other Program Failure	6	2
Other Warrant	0	3
Pre-Adjudication House Arrest	4	2
Pretrial Supervision	0	6
Probation Warrant	25	13
Sanction House	1	0



Juvenile Detention Alternatives

ADP: October 2013- Present



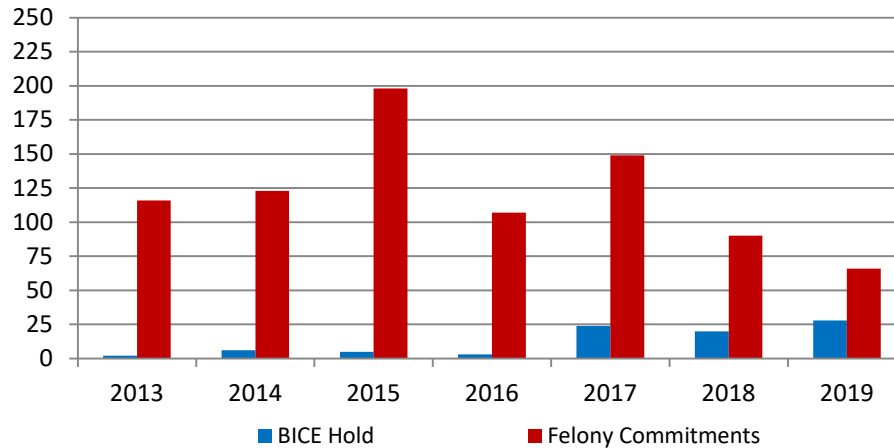
Juvenile Detention Services

October ADP	2016	2017	2018	2019
Juvenile Detention Facility	46	60	57	56
Juvenile Residential Facility	16	19	18	13
Home Based Supervision	28	14	27	25
Detention Advocacy Case Management Services	45	45	29	8
Weekend Alternative Detention Program (total)	20	0	0	N/A

October YTD AVERAGE	2016	2017	2018	2019
Juvenile Detention Facility	57	51	52	52
Juvenile Residential Facility	16	16	14	15
Home Based Supervision	27	21	25	27
Detention Advocacy Case Management Services	35	38	32	20
Weekend Alternative Detention Program	15	10	0	N/A

Monthly Jail Snapshot: September 30, 2019

Snapshots October 2013 - Present

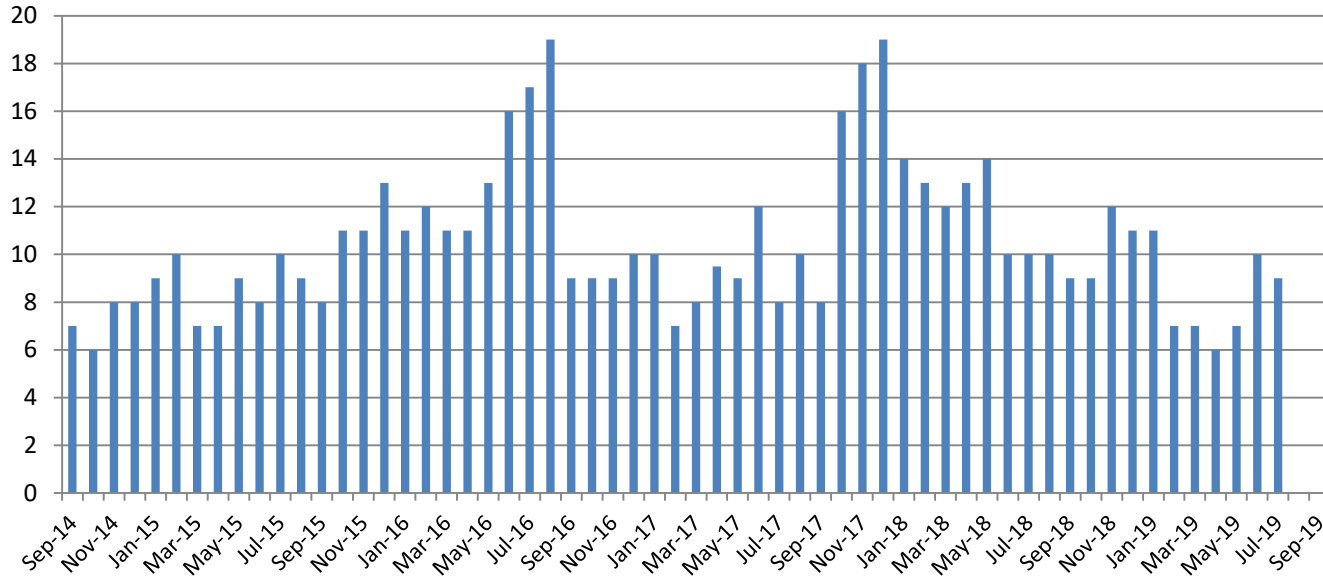


BICE Hold	2013	2014	2015	2016	2017	2018	2019
October	2	6	5	3	24	20	28

Felony Commitments	2013	2014	2015	2016	2017	2018	2019
October	116	123	198	107	149	90	66



Journal Entry Completion (Average Days) September 2014-Present



September	2014	2015	2016	2017	2018	2019
Avg. Days	7	8	9	8	9	ND
YTD Avg.	7	9	13	9	11.6	ND

