

What do you do...



...if you or someone else is sexually abused,
sexually harassed or sexually assaulted?

- Tell a staff or supervisor
- Tell any adult you trust
- Tell your parent, legal guardian or other family member
- Fill out a grievance
- Contact the PREA Coordinator for Sedgwick County Department of Corrections, **316-660-1623**
- Call the Kansas Protection Report Center at **1-800-922-5330**



Safety Tips:

- Be aware of your situation.
- Don't be afraid of saying "No."
- Do not accept items or gifts from clients or staff.
- Avoid secluded areas.
- If you are being pressured, report it to someone you trust.

The Sedgwick County Department of Corrections
is committed to your safety!

The Sedgwick County Department of Corrections services and locations

Criminal Justice Alternative Programs

**Pretrial Services Program
(PSP) - 316-660-1740**

**Sedgwick County Drug
Court - 316-660-9500**

3803 E. Harry, Suite 121
Wichita, KS 67218

Community Corrections

Adult Field Services (AFS)

**Adult Intensive Supervision
Program (AISP) - 316-660-7003**
905 N. Main, Wichita, KS 67203

**Adult Residential and Work
Release - 316-660-9500**
623 E. Elm, Wichita, KS 67202

For more information on
the services listed, please
visit www.sedgwickcounty.org.

Juvenile Services

**Starting Point Prevention
Program - 316-660-5353**

**Juvenile Intake and
Assessment Center (JIAC)**
316-660-5350

**Juvenile Detention Facility
(JDF) - 316-660-9750**

700 S. Hydraulic
Wichita, KS 67211

**Juvenile Residential
Facility (JRF)**
316-660-9775
881 S. Minnesota
Wichita, KS 67211

Home-Based Supervision
316-660-9737
700 S. Hydraulic
Wichita, KS 67211

Juvenile Field Services
316-660-5380
3803 E. Harry, Suite 125
Wichita, KS 67218



SEXUAL ASSAULT & ABUSE

It is
against
the law!



Department of Corrections



Department of Corrections

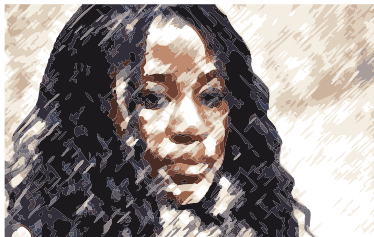
What is PREA?

PREA stands for the Prison Rape Elimination Act, which was signed into law by President George W. Bush on September 4, 2003.

PRISON RAPE ELIMINATION ACT

What is the purpose of PREA?

PREA is intended to increase safety through education, engagement, enforcement and the elimination of dangerous and harmful behaviors.



What is physical abuse?

Physical abuse is something done to you that causes physical pain or injury to your body, often called an assault.



What is sexual abuse?

Sexual abuse is a sexual act committed against you or the intentional touching of your body in a sexual way by another person.

What is Undue Familiarity?

An employee/client relationship or any attempt to initiate a relationship that is not part of the employee's work duties. This includes personal and business relationships that take place while on or off duty. Examples include but are not limited to romantic or intimate behavior, socializing and correspondence, such as the sharing of photos and contact via mail, telephone or social media. Sexual contact, touching of genitals, kissing and sexual harassment are prohibited and punishable by policy and/or law.

No employee/client sexual relationship is allowed.

What programs?

PREA applies to all residential centers or confinement facilities. This includes all the Sedgwick County Department of Corrections adult and juvenile facilities or programs.

Sedgwick County Department of Corrections shall promptly investigate and enforce laws and policies of "zero tolerance" relating to all allegations of sexual acts, harassment or sexual misconduct in any of its facilities. The division shall provide a comprehensive sexual assault prevention and intervention program that includes:

- Education
- Prevention
- Prompt Intervention
- Discipline/Prosecution for assailants
- Treatment for victims

What should clients expect?

Clients should expect a facility that is free from any form of abuse.