

HANNEY & ASSOCIATES ARCHITECTS
1726 South Hillside, Wichita, Kansas

NOTICE TO BIDDERS

You are hereby instructed to include in your bids the following changes and/or corrections to the Drawings and Specifications for the **Sedgwick County Fire Station 31**, in Andale, Kansas.

The additions and/or corrections shall be considered as a part of the Contract Documents as if incorporated therein. Where the following corrections and/or additions vary from the conditions of the Drawings and Specifications, such following changes or additions shall govern.

I. GENERAL CLARIFICATIONS:

- 1.1 The Bid Date and Time shall remain unchanged.
- 1.2 The Plan Review has been completed. The MABCD stamped drawings were issued for bidding. The Plan Review fee has been paid.
- 1.3 The Building Permit fee will be paid by the Contractor.
- 1.4 The Utility connections and service Fees will be coordinated by the Contractor and billed directly to the owner (Sedgwick County) and paid by Sedgwick County.
- 1.5 Approved Equals:
Products or manufactures approved, as "Equals" shall meet all requirements of the plans, specification, standards of performance and construction as established by the product or manufacture originally specified.

II. CHANGES TO THE SPECIFICATIONS

- 2.1 Specification Section 8630 – Sectional Doors
 - a. Part II – Products, Paragraph 1 – Acceptable Manufacturer
 1. C.H.I. Overhead Door is an approved manufacturer. Please refer to item 1.5 in this addendum.
- 2.2 Specification Section 13600 – Pre-Engineered Metal Building Components
 - a. Paragraph 1.2
 1. Nucor is an approved PEMB manufacturer. Please refer to item 1.5 in this addendum.

II. CHANGES TO THE DRAWINGS:

2.1 Sheet INDEX

- a. The Index is being reissued to show sheet S5.3.
- b. The descriptions of sheets S5.1 and S5.2 were corrected.

2.2. Sheet C4.0

This sheet was duplicated in the bid package. To avoid confusion, these two copies of C4.0 shall be deleted and replaced by the C4.0 issued with this addendum.

2.3 Sheet S5.3

This sheet is included in the Bid Package and was added to the Index of Drawings.

2.3 Sheet P1.1

This sheet was missing and is being issued with this addendum.

2.3 Sheets P1.2

This sheet was duplicated in the bid package. To avoid confusion, these two copies of P1.2 shall be deleted and replaced by the P1.2 issued with this addendum.

END OF ADDENDUM





4/5/20
HANNEY & ASSOCIATES, ARCHITECTS
1726 South Hillside, Wichita, Kansas, 67211
Phone (316) 883-8965
Fax (316) 684-1441
www.haarchitects.com

2020

SEDGWICK COUNTY FIRE STATION #31
247th STREET WEST (ANDALE ROAD)
ANDALE, KANSAS

INDEX TO DRAWINGS			
TITLE	-	TITLE SHEET	A6.1 - ENLARGED FLOOR PLAN
INDEX	-	INDEX TO DRAWINGS	A6.2 - INTERIOR ELEVATIONS
CODE 1	-	CODE - SITE PLAN	A6.3 - INTERIOR ELEVATIONS
ADA	-	ADA DETAILS	A6.4 - INTERIOR ELEVATIONS
CIVIL			A7.1 - MILLWORK DETAILS
C0.0	-	EXISTING SURVEY	A7.2 - MILLWORK DETAILS
C1.0	-	SITE PLAN	A8.1 - FINISH SCHEDULE
C2.0	-	GRADING PLAN	A8.2 - FINISH PLANS
C3.0	-	UTILITY PLAN	STRUCTURAL
C3.1	-	PPW PLAN	S0.0 - GENERAL NOTES
C3.2	-	PPW PLAN	S0.1 - SCHEDULES
C3.3	-	WATER ASSEMBLY DETAILS	S1.0 - FOUNDATION PLAN
C3.4	-	WATER SERVICE DETAILS	S2.0 - ROOF FRAMING PLAN
C3.5	-	WATER DETAILS	S3.0 - WALL SECTIONS
C4.0	-	EROSION CONTROL	S4.0 - DETAILS
LANDSCAPE			S4.1 - DETAILS
L-1	-	LANDSCAPING PLAN	S5.0 - LINTEL SCHEDULE
L-2	-	IRRIGATION PLAN	S5.1 - WALL DETAILS
ARCHITECTURAL			S5.2 - WALL DETAILS
SP-1	-	OVERALL SITE PLAN	S5.3 - FRAMING DETAILS
SP-2	-	UTILITY PLAN	S6.0 - GIRDER PROFILES
SP-3	-	SITE DETAILS	MECHANICAL
SP-4	-	SITE DETAILS	M1.1 - OVERALL MECHANICAL FLOOR PLAN
A1.0	-	WALL TYPE SCHEDULES	M1.2 - MECHANICAL ISOMETRIC
A1.1	-	OVERALL FLOOR PLAN	MP1.1 - SCHEDULES
A2.1	-	ENLARGED ROOF PLAN	PLUMBING
A2.2	-	ROOF DETAILS	P1.1 - PLUMBING WASTE & VENT PLAN
A2.3	-	REFLECTED CEILING PLAN	P1.2 - PLUMBING ABOVE GRADE PIPING
A2.4	-	CEILING DETAILS	P1.3 - WASTE & VENT ISOMETRIC
A3.1	-	DOOR SCHEDULE	P1.4 - DETAILS
A3.2	-	WINDOW SCHEDULE	ELECTRICAL
A3.3	-	WINDOW & DOOR DETAILS	E1.1 - ELECTRICAL SYMBOL LIST/ LIGHT FIXTURE SCHEDULE
A3.4	-	DETAILS	E1.2 - SCHEDULES
A4.1	-	EXTERIOR ELEVATIONS	E1.3 - SCHEDULES
A4.2	-	EXTERIOR ELEVATIONS	E1.4 - ELECTRICAL SITE PLAN
A4.3	-	BUILDING SECTIONS	E2.1 - LIGHTING PLANS
A4.4	-	BUILDING SECTIONS	E3.1 - POWER & SYSTEMS PLAN
A4.5	-	BUILDING SECTIONS	
A5.1	-	WALL SECTIONS	
A5.2	-	WALL SECTIONS	
A5.3	-	WALL SECTIONS	
A5.4	-	WALL SECTIONS	

DRAWINGS ISSUED		
NO.	DATE	ITEM ISSUED
4	4/5/20	ADDENDUM 1
8	3/18/20	CODE REVIEW
7	2/28/20	100% REVIEW
6	2/21/20	REVIEW
5	2/14/20	REVIEW
4	2/7/20	REVIEW
3	12/21/19	REVIEW
2	11/21/19	COMMITTEE REVIEW
1	11/15/19	REVIEW

COMPUTER DRAWING	
F59L_INDEX.dwg	

DATE: JANUARY 2020	
DRAWN BY:	CHECKED BY:
CH, MB, TC	MRH

SHEET

INDEX

OF | SHEETS



THIS SHEET HAS BEEN
SIGNED, SEALED AND
DATED DIGITALLY

HANNEY & ASSOCIATES, ARCHITECTS

1726 South Hillside, Wichita, Kansas, 67211

Phone (316) 683-8965
Fax (316) 684-1441
www.haarchitects.com

2020
SEDGWICK COUNTY FIRE STATION #31
247th STREET WEST (ANDALE ROAD)
ANDALE, KANSAS

DRAWINGS ISSUED		
NO.	DATE	ITEM ISSUED
3	2/27/19	REVIEW
2	11/21/19	COMMITTEE REVIEW
1	11/15/19	REVIEW

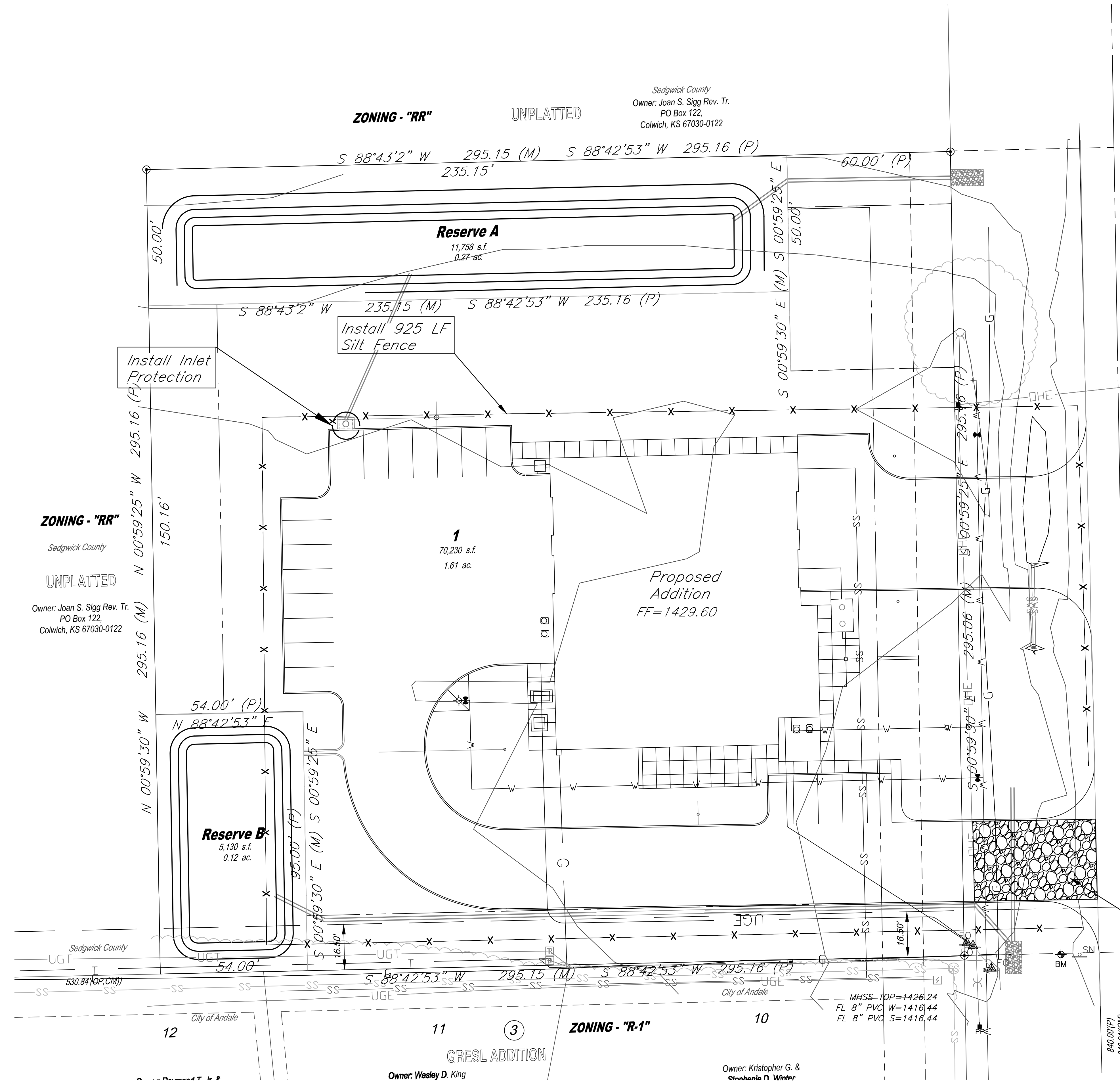
COMPUTER DRAWING

DATE: DECEMBER, 2019	
DRAWN BY:	CHECKED BY:
TC	MRH

SHEET

C4.0

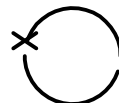
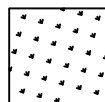

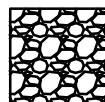
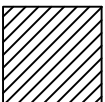
OF 1 SHEETS



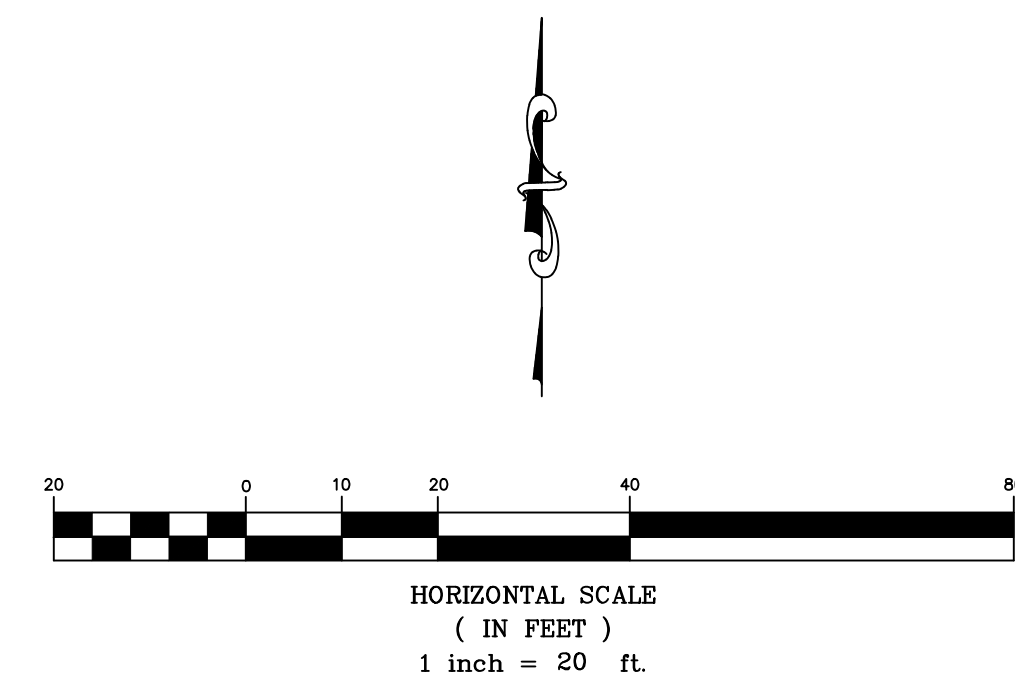
General Notes:

1. *The BMP's shown on this sheet are considered minimum standards. Whenever sediment enters the streets, storm sewers, ditches, or ponds, contractor will install additional BMP's, as needed, to correct the problem.*
2. *The soil erosion BMP's shown hereon must be in place at all times during construction until such time as the site is re-established with paving or grass.*
3. *Back of curb protection can include hay bale, silt fence, Curlex barrier, or approved alternate as shown on BMP standard details. This BMP must remain in place until the area between the curb and right-of-way line has been permanently stabilized.*
4. *The General Contractor is responsible for the installation and maintenance per the prevention maintenance plan.*
5. *Concrete trucks will be permitted to wash out only at approved locations. then maintain and clean up as conditions require, by contractor. No hazardous materials are expected to be encountered. Any spills (diesel, fuel, oil, etc.) will be cleaned up and removed immediately. Portable toilets will be supplied and maintained at various sites along the project. Disposal of sewage will be handled by a contracting firm specializing in this activity.*
6. *The above mentioned storm water prevention methods will be monitored daily and maintained as required. A weekly erosion control log will be posted in the job trailer onsite, and updated weekly. Site inspections are required within 24 hours after a precipitation event of 0.5" or greater.*
7. *Stabilize disturbed areas within 14 days after soil disturbing activities cease. Stabilize with mulch or similarly effective BMPs, in addition to seeding.*

LEGEND:

- *Flow Direction*
-  *Inlet Protection – to be provided at all inlets subject to silt laden runoff.*
- *Ditch Check*
-  *Temporary Seeding and Matting.*
-  *Silt Fence or Hay Bale Barrier – to be installed along property lines where runoff from construction site can run onto other properties.*
-  *Stabilized Construction Entrance – to be used at all locations where vehicles or equipment enter or exit property.*
-  *Back of Curb Protection – to be installed whenever curb is backfilled to less than 3 inches from top and disturbed earth exists adjacent thereto. (See City Standard Details.)*

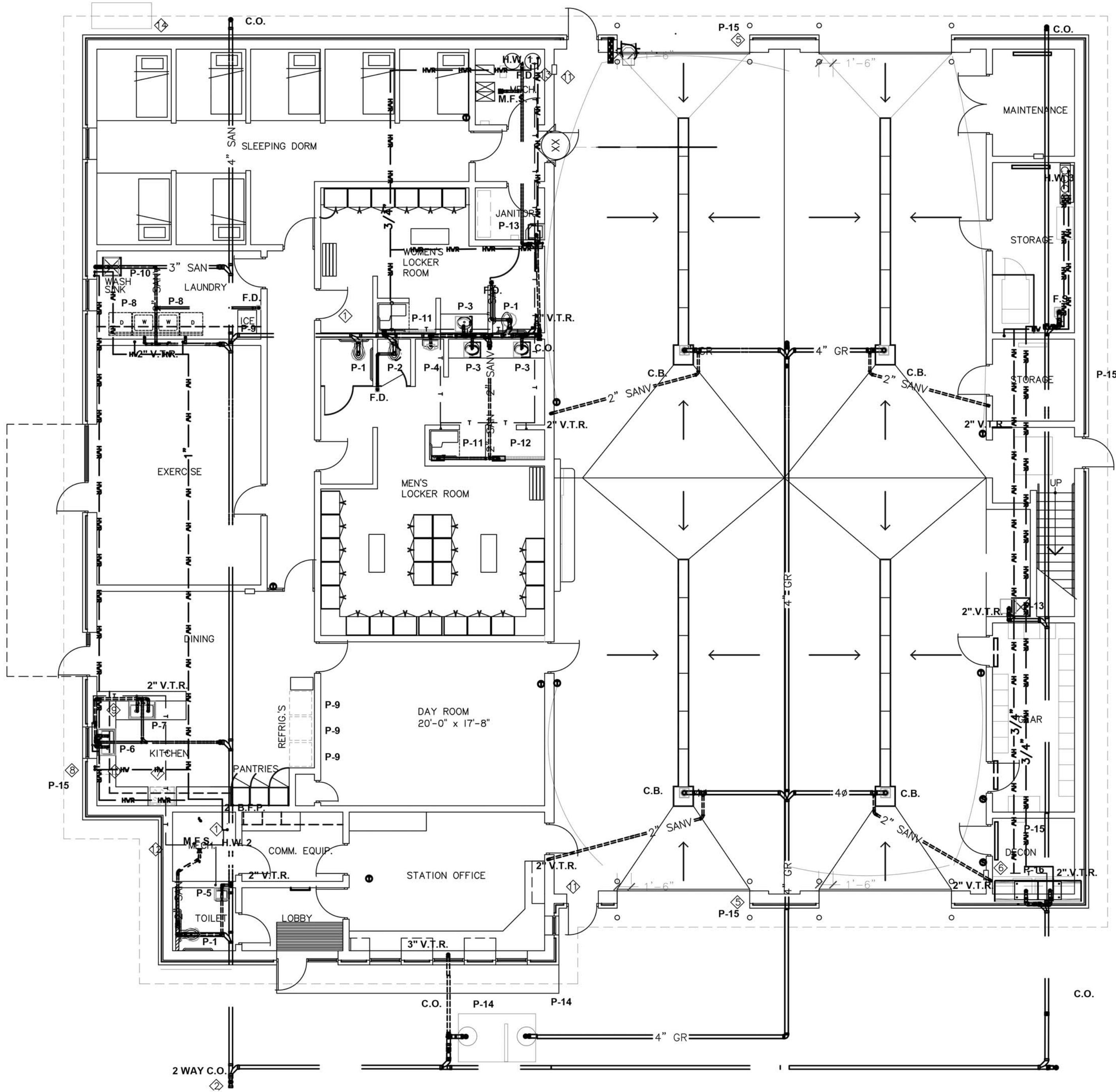
Stabilized
Construction
Entrance/Exit





HANNEY & ASSOCIATES, ARCHITECTS
1726 South Hillside, Wichita, Kansas, 67211
Phone (316) 683-8965
Fax (316) 684-1441
www.hanarchitects.com

2020
SEDGWICK COUNTY FIRE STATION #31
247th STREET WEST (ANDALE ROAD)
ANDALE, KANSAS



PLUMBING WASTE & VENT

SCALE 1/8"=1'0"

0 1 2 5 10



FIXTURE SCHEDULE

MARK	FIXTURE	WATER		WASTE CONN.	VENT	REMARKS	FURNISHED BY
		COLD CONN.	HOT CONN.				
P-1	WATER CLOSET	1"	0	4"	2"	HANDICAP	P.C.
P-2	WATER CLOSET	1"	0	4"	2"		P.C.
P-3	LAVATORY	1/2"	1/2"	2"	1-1/2"	HANDICAP	P.C.
P-4	URINAL	3/4"	0	2"	1-1/2"	HANDICAP	P.C.
P-5	LAVATORY	1/2"	1/2"	2"	1-1/2"	HANDICAP	P.C.
P-6	KITCHEN SINK	1/2"	1/2"	2"	1-1/2"	HANDICAP	P.C.
P-7	KITCHEN SINK	1/2"	1/2"	2"	1-1/2"		P.C.
P-8	WASHER	1/2"	1/2"	2"	1-1/2"		P.C.
P-9	ICE MAKER	1/2"					P.C.
P-10	WASH SINK	1/2"	1/2"	2"	1-1/2"		P.C.
P-11	SHOWER	1/2"	1/2"	2"	1-1/2"	HANDICAP	P.C.
P-12	SHOWER	1/2"	1/2"	2"	1-1/2"		P.C.
P-13	MOP SINK	1/2"	1/2"	3"	1-1/2"		P.C.
P-14	MUD & OIL SEPERATOR			4"	3"		P.C.
P-15	HOSE BIBB	1"	1"	3"	1-1/2"		P.C.
P-16	SCULLERY SINK	1/2"	1/2"	3"	1-1/2"		P.C.
P-17	EXTRACTOR	3/4"	3/4"				OWNER

PLUMBING SYMBOL SCHEDULE

MARK	DESCRIPTION	MARK	DESCRIPTION
	SANITARY SEWER		FLOOR DRAIN
	PLUMBING VENT LINE		CLEANOUT
	DOMESTIC COLD WATER LINE		GAS VALVE
	DOMESTIC HOT WATER LINE		BALL VALVE
	DOMESTIC HOT WATER RECIRCULATING		UNION
	NATURAL GAS LINE		VENT THROUGH ROOF
	TEMPERED WATER LINE		WALL HYDRANT (FREEZE PROOF)
	GRIT LINE		CONDENSATE DRAIN

PLUMBING PLAN NOTES:

- ◇ C.W. SHUT OFF VALVE.
- ◇ SANITARY SEWER EXTENSION BY UTILITY CONTRACTOR.
- ◇ WATER MAIN BY UTILITY CONTRACTOR
- ◇ GAS SERVICE AND METER BY UTILITY
- ◇ 1-1/2" C.W. TANK FILL EXPOSED NOT IN PILASTER W/FULL PORT BALL VALVE
- ◇ & FIRE HOSE THREAD ADAPTER.(MATCH OWNER REQUIREMENT) 24" A.F.F.
- ◇ LOCATE MIXING VALVE AT SINK
- ◇ INSTALL GAS SHUT OFF VALVE BY FIRE PROTECTION
- ◇ P.C. TO FURNISH & INSTALL GAS SHUT OFF VALVE FOR GAS GRILLE
- ◇ P.C. TO FURNISH & INSTALL REVERSE OSMOSIS TANK
- ◇ 1/4" C.W. & 1/2" DRAIN.
- ◇ 1/2" HOT WATER & DRAIN DISHWASHER TO GARBAGE DISPOSAL.
- ◇ ISOLATION BALL VALVE
- ◇ BACKFLOW PREVENTOR, BALL VALVE AND VACUUM BREAKER TO LAWN SPRINKLER SYSTEM BY OTHERS
- ◇ 1/4" C.W. LINE WITH BALL VALE AND 1/2" DRAIN LINE FOR HUMIDIFIER
- ◇ 2" GAS LINE TO GENERATOR

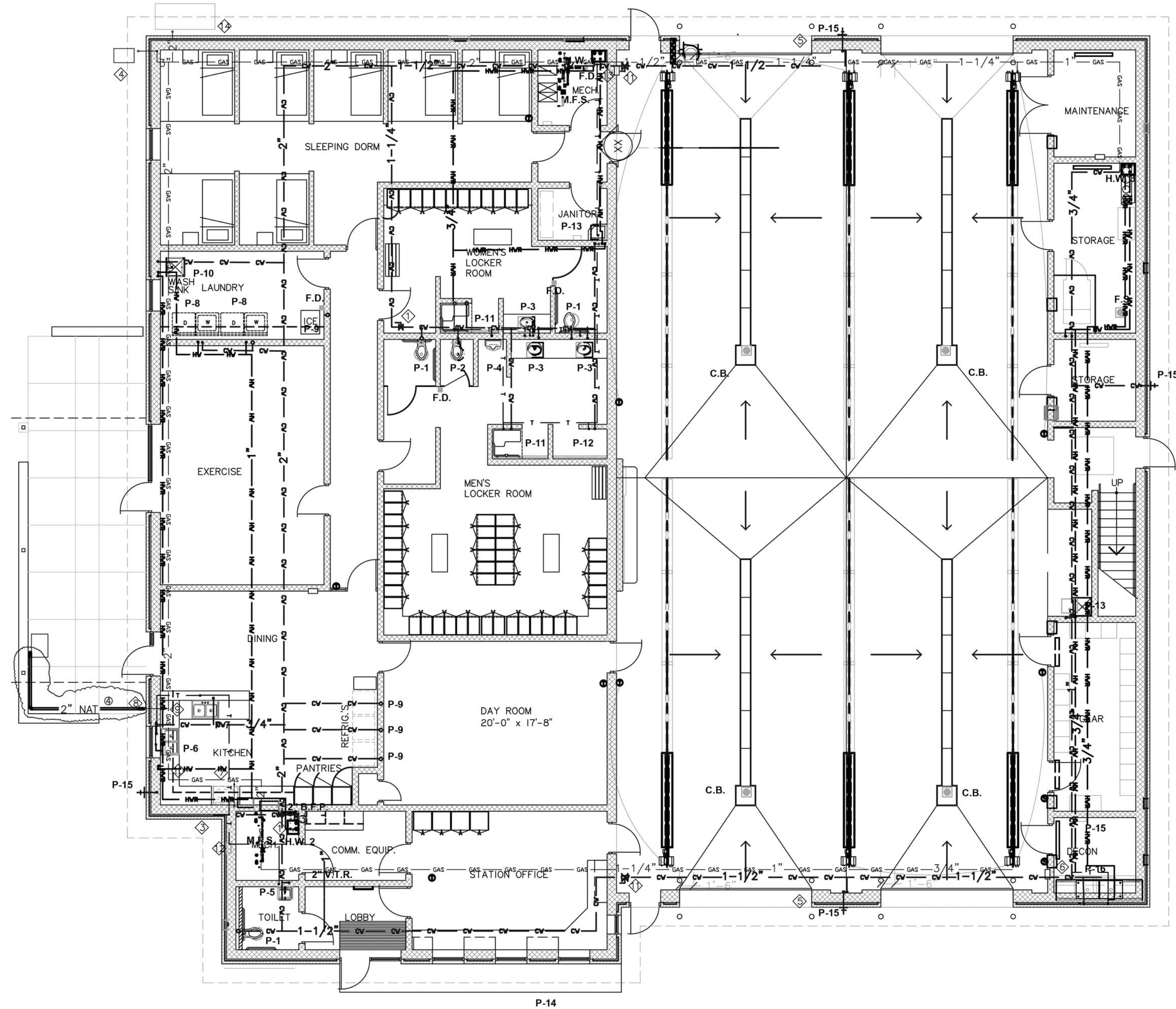
MECHANICAL CONCEPTS L.L.C.
14801 TIMBERLAKE RD.
WICHITA, KANSAS 67230
PHONE 316-733-2718
FAX 877-839-4680
EMAIL RB@RICHARDBOWMAN.US

DRAWINGS ISSUED		
NO.	DATE	ITEM ISSUED
4	4/5/20	ADDENDUM 1
5	3/18/20	CODE REVIEW
7	2/28/20	100% REVIEW
6	2/21/20	REVIEW
5	2/14/20	REVIEW
4	2/7/20	REVIEW
3	2/27/19	REVIEW
2	11/21/19	COMMITTEE REVIEW
1	11/15/19	REVIEW

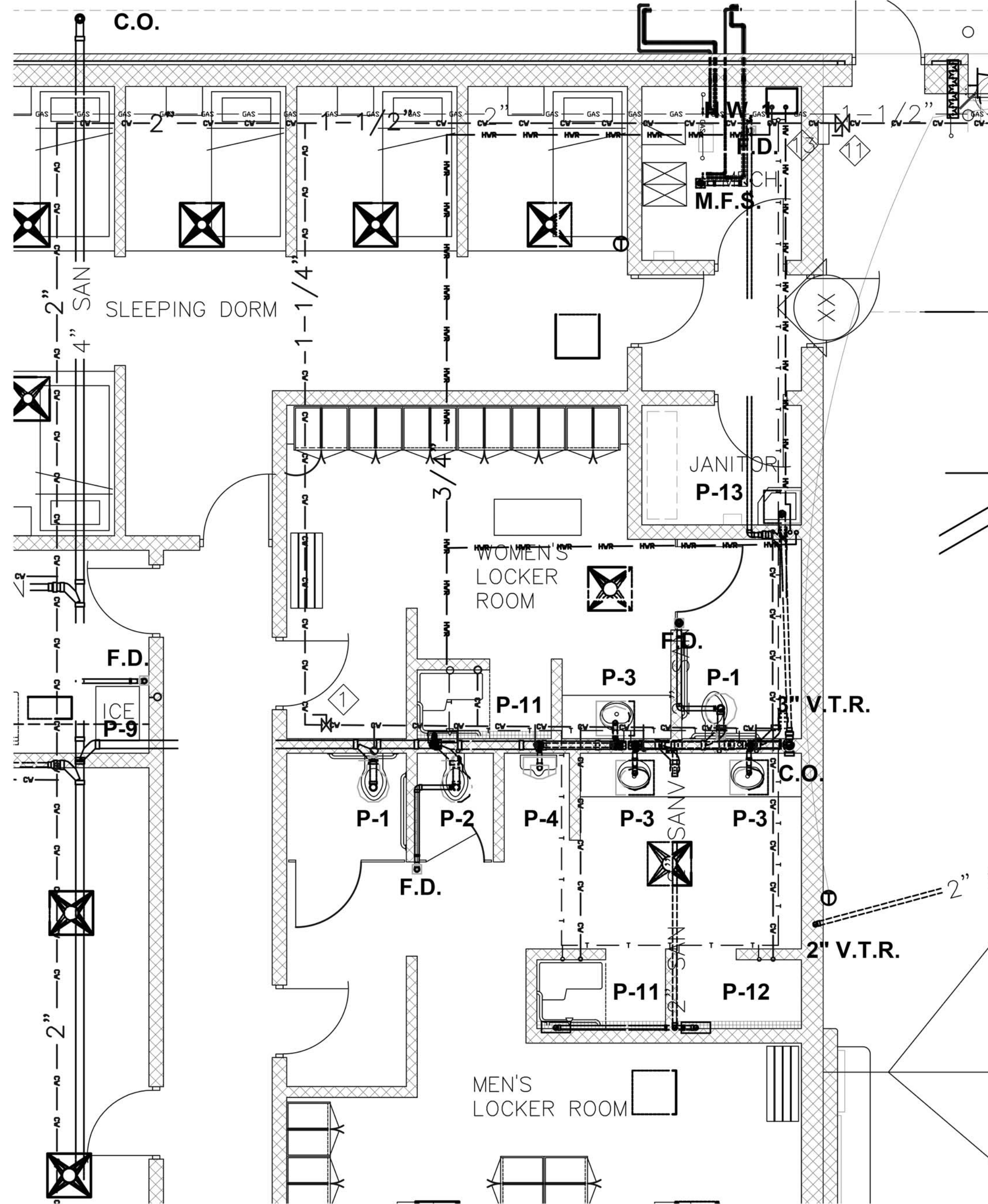
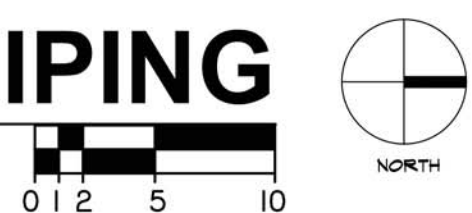
COMPUTER DRAWING	

DATE: JANUARY 2020	
DRAWN BY:	CHECKED BY:
RJB	NEM

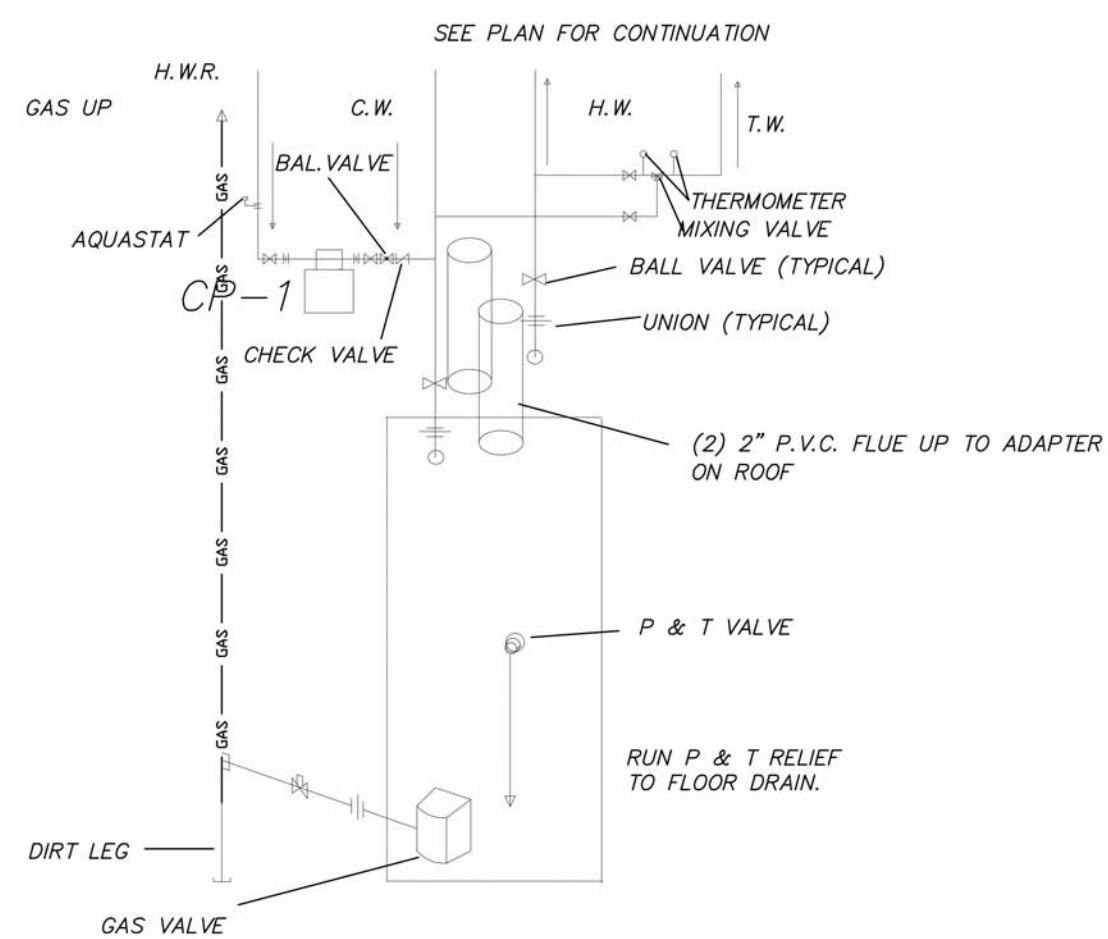
SHEET	
P1.1	
OF 1	SHEETS



PLUMBING ABOVE GRADE PIPING
SCALE 1/8"=1'0"



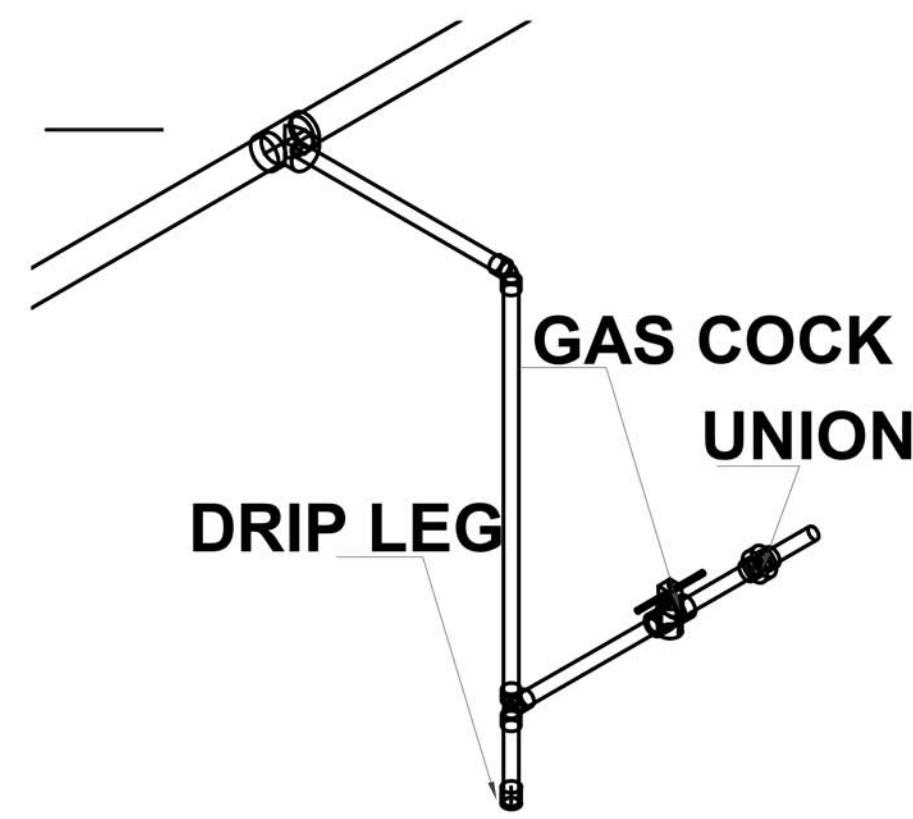
RESTROOM DETAIL
SCALE 1/4"=1'0"



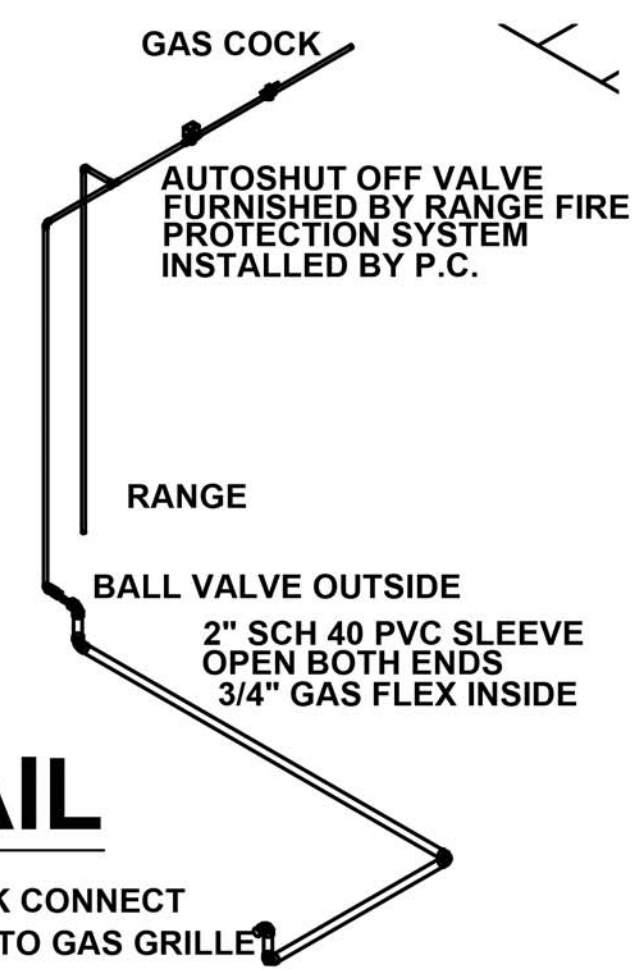
1/12" TANK FILL 24" A.F.F.
WITH FULL PORT BALL VALVE
& FIRE HOSE ADAPTER
MATCH OWNER HOSE THREAD
FIELD VERIFY

TANK FILL DETAIL
1/4"=1'0"

SPACE LEFT INTENTIONALLY BLANK



GAS CONNECTOR
NO SCALE



PIPING DETAIL
NO SCALE

- PLUMBING PLAN NOTES:**
- ◇ C.W. SHUT OFF VALVE.
 - ◇ SANITARY SEWER EXTENSION BY UTILITY CONTRACTOR.
 - ◇ WATER MAIN BY UTILITY CONTRACTOR
 - ◇ GAS SERVICE AND METER BY UTILITY
 - ◇ 1-1/2" C.W. TANK FILL EXPOSED NOT IN PILASTER W/FULL PORT BALL VALVE & FIRE HOSE THREAD ADAPTER (MATCH OWNER REQUIREMENT) 24" A.F.F.
 - ◇ LOCATE MIXING VALVE AT SINK
 - ◇ INSTALL GAS SHUT OFF VALVE BY FIRE PROTECTION
 - ◇ P.C. TO FURNISH & INSTALL GAS SHUT OFF VALVE FOR GAS GRILLE
 - ◇ P.C. TO FURNISH & INSTALL REVERSE OSMOSIS TANK
 - ◇ 1/4" C.W. & 1/2" DRAIN.
 - ◇ 1/2" HOT WATER & DRAIN DISHWASHER TO GARBAGE DISPOSAL.
 - ◇ ISOLATION BALL VALVE
 - ◇ BACKFLOW PREVENTOR, BALL VALVE AND VACUUM BREAKER TO LAWN SPRINKLER SYSTEM BY OTHERS
 - ◇ 1/4" C.W. LINE WITH BALL VALE AND 1/2" DRAIN LINE FOR HUMIDIFIER
 - ◇ 2" GAS LINE TO GENERATOR

PLAN REVIEW NOTES:

- ◇ FIRE PROTECTION PIPING TO CONNECT ON WATER METER
- ◇ USE OF DOMESTIC WATER BALL VALVE
- ◇ FLOOR DRAIN SIZED FOR GRAVITY DRAINAGE FROM FROM F.P. SYSTEM ONLY. MAIN DRAIN VALVE FOR FLOW TESTING MUST BE PIPED TO EXTERIOR BY F.P.C.
- ◇ 2" SCH 40 PVC SLEEVE FOR 3/4 GAS FLEX LINE TO GAS GRILLE SEE DETAIL

MECHANICAL CONCEPTS L.L.C.
14801 TIMBERLAKE RD.
WICHITA, KANSAS 67230
PHONE 316-733-2718
FAX 877-839-4680
EMAIL RB@RICHARDBOWMAN.US



HANVEY & ASSOCIATES, ARCHITECTS
1726 South Hillside, Wichita, Kansas, 67211
Phone (316) 683-8965
Fax (316) 684-1441
www.haarchitects.com

2020
SEDGWICK COUNTY FIRE STATION #31
247th STREET WEST (ANDALE ROAD)
ANDALE, KANSAS

DRAWINGS ISSUED		
NO.	DATE	ITEM ISSUED
9	4/5/20	ADDENDUM 1
8	3/18/20	CODE REVIEW
7	2/28/20	100% REVIEW
6	2/21/20	REVIEW
5	2/14/20	REVIEW
4	2/7/20	REVIEW
3	2/21/19	REVIEW
2	11/21/19	COMMITTEE REVIEW
1	11/15/19	REVIEW

COMPUTER DRAWING

DATE: JANUARY 2020
DRAWN BY: RJB
CHECKED BY: NEM

SHEET
P1.2
OF 1 SHEETS