

## **Addendum Number Two**

To The Drawings and Specifications for  
Sedgwick County **Fire Station 31**

Issue date: April 23, 2020

### **HANNEY & ASSOCIATES ARCHITECTS**

1726 South Hillside, Wichita, Kansas

#### **NOTICE TO BIDDERS**

You are hereby instructed to include in your bids the following changes and/or corrections to the Drawings and Specifications for the **Sedgwick County Fire Station 31**, in Andale, Kansas.

The additions and/or corrections shall be considered as a part of the Contract Documents as if incorporated therein. Where the following corrections and/or additions vary from the conditions of the Drawings and Specifications, such following changes or additions shall govern.

#### **I. GENERAL CLARIFICATIONS**

- 1.1 The Bid Date and Time shall remain unchanged.
- 1.2 Fire Sprinkler System.
  - A. A domestic fire protection system is required for this project.
  - B. The system is a design build with the General Contractor to include the cost to hire a Fire Protection Engineer to design the system. The design shall be per NFPA13D as noted in Specification Section 15700 – Fire Protection.
  - C. The NFPA13D system is fed from the 2” domestic water line shown on the Civil plans. A dedicated water line is not required.
  - D. The design of the system shall include asolenoid valve control type valve that shuts off the domestic usage if the fire sprinkler system goes off per NFPA13D.
- 1.3 Water Service.

The water service to the new Fire Station 31 is 2” water meter and 2” Schedule 40 PVC water line.
- 1.4 Civil.
  - A. SDR35 PVC Sewer Pipe is acceptable for the 12” PVC storm sewer pipes.
  - B. SCH40 PVC pipe acceptable for the 4” PVC sanitary sewer pipe.
  - C. C900 Dr-18 PVC pipe is acceptable for the 6” PVC waterlines.
  - D. Rip-Rap shall be equal to “Light Stone” as defined by the City of Wichita.

- 1.5 Water Meter.
- A. The water meter shall be a Sensus meter with the touch read system. This meter is available from the company “Core & Main”, 8405 West Irving Street, Wichita, Kansas 67209, (316) 721-1698 phone. The contact person the used by the City of Andale is Preston Hodges.
  - B. Provide shut off valves on both sides of the meter to facilitate easier replacement in the future.
  - C. Water Meter Setter – The City of Andale requires a copper setter with the bypass on the bottom.
- 1.6 Shower Trench Drains.
- A. The (3) shower trench drains are specified in the description of the P-11 and P-12, Specification Section 15155 – Plumbing System.
  - B. Infinity Drain, FF series drains are an acceptable equal to the originally specified shower trench drains (with the provision noted below).
  - C. The length of the shower trench drains are shown on A6.1, they shall be the full length of the shower room, approximately 6’-0” long.
- 1.7 Aluminum Trash Gate.  
The aluminum gate shall be as manufactured by Ametco Manufacturing Corporation or the approved equal. Please refer to Changes to Specifications, Section-05990 – Miscellaneous Metal and Metal Specialties in this addendum.
- 1.8 Infrared Tube Heaters.  
Superior Radiant Products (SRP) is an approved equal for the Infrared Tube Heaters, please refer to item 1.14 in this addendum.
- 1.9 Nichiha Wall Panels.  
Nichiha wall panels were removed from this project.
- 1.10 Bunk Gear Storage Racks  
This equipment is specified in Section 10501 – Storage Lockers.
- 1.11 Extractor (Milnor)
- A. The extractor is a large washing machine that is provided by the Owner and Installed by the General Contractor. The unit is manufactured by Pellerin Milnor, Model 30022T6X. <https://www.milnor.com/products/30022t6x/>
  - B. The Plumbing contractor shall provide hot and cold water connections as noted in the Fixture Schedule on P1.1 – P17 - Extractor.
  - C. The Electrical Contractor shall provide power as noted on Sheet E3.1, note 39.
  - D. Cut sheets for this unit are included with this addendum.

- 1.12 Bauer CFS Fill Station with a 4-cylinder cascade system.  
This equipment is provided by the Owner and installed by the General Contractor. It will be located on the North wall of Storage – 123. The photo below shows what the unit and bottle storage rack look like.



- 1.13 Building Plaque.  
Building Plaque is provided by Owner and to be installed by the General Contractor.  
Owner selects final install location.
- 1.14 Approved Equals.  
Products or manufactures approved, as “Equals” shall meet all requirements of the plans, specification, standards of performance and construction as established by the product or manufacture originally specified.
- 1.15 Plan Holders List.  
Sedgwick County Purchasing Department maintains the list of plan holders for their projects.  
Please refer to their website to obtain a copy of this list.
- 1.16 Window Sills.  
The window sills shall be 6” square x 1/2” thick, quarry tile, grey color to be 86 Elephant Grey, equal to Summitville. The grout color shall be Mapei, color selected later. Finish the edge with a Schluter Rondec-Steip trim.
- 1.17 Shower Floor.  
The floor in the three showers shall be recessed 3”. The tile floor will use a thick set grout to set the floor slopes to insure proper flow to the shower trench drains.

## **II. CHANGES TO THE SPECIFICATIONS**

### **2.1 INDEX**

- A. Division 8 – Windows & Doors,  
Section 81113 shall be corrected to be Section 08113.
- B. Division 15 – Mechanical  
Section 15230 – Reverse Osmosis Water Filtration System is added by this addendum.

### **2.2 Section 03360 – Special Concrete Floor Finishes**

The Section number on the specification section shall be corrected to be 03360 in lieu of 033600 as shown.

### **2.3 Section 04200 – Masonry**

Paragraph 4.4 Face Brick, item E., the allowance for the purchase of the brick shall be changed to \$600 per 1000 brick (one color).

### **2.4 Section 05990 – Miscellaneous Metal and Metal Specialties**

- A. Paragraph 2 – Work Included, item 2.5 Building Plaque.  
A bronze building plaque will be provided by the Owner and installed by the General Contract. The exact location will be determined later.
- B. Paragraph 5 – Metal Shelving
  - 1. This shelving is wall mounted above the two compartment sink in the Decon Room – 118. The shelving extends the width of the room, approximately 8'-8".
- C. Aluminum Trash Gates and Hinge Posts.  
The aluminum trash gates shall be by Ametco Manufacturing Corporation, 4326 Hamann Parkway; P.O. Box 1210; Willoughby, Ohio 44096; (800) 321-7042 phone; (440) 951-2542 fax; or  
  
Andy's Ornamental Iron and Aluminum, Andy Ennis, Owner, 3459 NW 182<sup>nd</sup> Street, Stark, Florida 32091, (904) 966-1766, ironmandy60@gmail.com; or the approved equal.
  - 1. The color of the powder coat finish shall be selected from the Ametco Powder Cost Color Chart.
  - 2. The trash gates and support posts shall be aluminum construction, double swing gate, with cane bolt, padlockable slide bolt, heavy-duty hinges.
  - 3. The gate infill shall be an aluminum fixed louver design selected from the four standard offered by Ametco.

- D. Handrail Brackets.
  - 1. Provide and install mounting bracket for handrail for all interior stairs. Handrail bracket shall be #306 malleable iron as manufactured by Julius Blum & Co., or the approved equal.
  - 2. Handrail brackets shall not be spaced greater than 5'-0" on center.

2.5 Section 06200 – Carpentry & Millwork  
Paragraph 8.17 – Casework Hardware

- A. Hardware shall comply with the ANSI/BHMA A 156.9 and associated product numbering system. Products supplied, as equal to those specified shall conform the same ANSI/BHMA product number as those specified
- B. Item 1 – Pulls, the pulls shall be changed to Amerock 979-26, polished chrome, or equivalent from Hafele.
- C. Item 3 – Hinge to be changed to be: Concealed 120° opening, self-closing hinge, Grass 3803 or equal by Blum or Hafele meeting ANSI/BHMA A156.9.
- D. Item 3a (new) Institutional Hinges: 180° opening, Grass Institutional Hinge or approved equal meeting ANSI/BHMA A156.9 – 32003 Grade 1 requirements. Use on wardrobe/locker doors.
- E. Item 5, shall be corrected to be – Adjustable shelf hardware equal to Lamp, SS-323 metal supports fitted to 5-mm holes at 32-mm centers.
- F. Item 6 – Drawer slides.  
Drawer Slides: Side mounted full extension ball bearing slides, KV 8400 series or equal meeting ANSI/BHMA A156.9. Contractor's option: Integrated drawer slide and side panel, Grass 6036, or equal by Blum or Hafele meeting ANSI/BHMA A156.9 may be used at contractor's option.
- G. Item 8 – Locks  
Item 8 shall become the heading for all cabinet locks.
  - 1. Lock "A" will become "8a".
  - 2. Lock "B" will become "8b".
  - 3. Lock "C" will become "8c".
  - 4. Combination Locks
    - a. Lockers except Pantry Cabinets and Accessible Lockers (18 such in room 112, 5 such in room 111): Three dial combination lock with code dial scrambling feature, Hafele Combi-Code lock 1157 for vertical application. Lock shall be mounted on primary door as indicated on the Drawings. Provide automatic door bolt, Hafele catalogue No. 245.58.754 to release secondary door. Lock "8d".
    - b. Pantry Cabinets (3 such in room 107) and Accessible Lockers (3 such in room 112, 1 such in room 111): Push button, ADA compliant, combination lock with programmable code feature, Hafele LS 100 series, vertical application, lever on bottom. Lock shall be mounted on primary door. Provide automatic door bolt, Hafele catalogue No. 245.58.754 to release secondary door. Lock "8e"

- H. Item 11 shall be deleted.
  - I. Item 15 – Coat Hooks shall be changed, to work Surface Bracket.  
Epoxy coated steel with a load capacity of 500 lb. per pair, Haefle 287.74.3XX series or equal.
  - J. Item 16 – shall change to Hanger Rods.  
KV 660-1 Chrome-look rod for lengths up to and including 2', KV 770-1 Chrome-look rod for lengths over 2'. Provide with #734 CHR end caps.
  - K. Item 17 – Cabinet Door Stop.  
Rockwood No. 456-US32.
- 2.6 Section 08360 – Sectional Doors
- A. All the sectional overhead doors shall be designed for 50,000 cycles in lieu of the 25,000 specified.
  - B. All the sectional overhead doors shall be hi-lift with jackshaft operator.
  - C. Paragraph 2.3
    - 1. Provide two power sensors mounted at 10" and 48" at each opening. A safety edge is not required with the two sets of photo eyes.
    - 2. Delete the reference to Sheet A4.1.
  - D. Paragraph 2.4 shall be deleted.
  - E. Part II – Products
    - 1. Paragraph 2.3, Item 2.3.11, the glazing shall be insulating glass in lieu of the 1/4" specified. The glazing shall be clear on the full view. The glazing on the insulated steel overhead doors shall be grey.
    - 2. Paragraph 2.4, The finish of the full view glass overhead doors shall be dark bronze to match the color / finish of the aluminum windows.
  - F. Paragraph 1 – Acceptable Manufacturer
    - 1. Amarr Overhead Door is an approved manufacturer. Please refer to item 1.14 in this addendum.
- 2.7 Section 81113 – Hollow Metal Doors and Frames  
This section number shall be corrected to be 08113 – Hollow Metal Doors and Frames.
- 2.8 Section 08710 – Door Hardware
- A. The Section number on the specification section shall be corrected to be Section 08710 – Door Hardware.
  - B. Heading Set 7.0 shall be corrected to add opening 106c.

2.9 Section 09500 – Acoustical Ceilings

- A. Paragraph 3, the ceiling materials shall be as called out in on Sheet A8.1.
- B. 1-Hour rated ceiling tile is specified because it does not droop and sag like standard tile. Tenting of the light fixtures will not be required.
- C. The Armstrong tile shall have an Angled Tegular edge.  
The Rockfon tile shall have a revel edge.  
All cut edges of border tile shall be painted white.

2.10 Section 09900 – Painting

- A. Paragraph 13- Interior Materials, add Item H – Epoxy Floor Coating (Decon-118):  
Armorseal 1000HS B67Q2000 or Tnemec High Build Epoxoline Series 66.
  - 1. Prepare floor surface as required by floor finish manufacturer.
  - 2. Apply mortar cove, 1” high, 45-degree cant at all walls.
  - 3. 1 coat Epoxy Floor Coating reduced up to 20% per manufacturer’s recommendation.
  - 4. 2 coats Epoxy Floor Coating.

2.11 Section 10000 – Room Equipment / Specialties

- A. Paragraph 6.2 – Tack Board,
  - 1. The reference to Sheet A6.2 shall be deleted.
  - 2. There is only one Tack Board. It shall be 4’x 5’ and will be ganged together with one of the specified Marker Boards.
  - 3. The exact mounting location of the tack board will be determined during construction.
- B. Paragraph 6.3 – Marker Boards
  - 1. The reference to “where shown on the drawings” shall be deleted.
  - 2. There are two Marker Boards. One is 4’x4’ the other is 4’x8’. The 4’x4’ Marker Board will be ganged together with the Tack Board.
  - 3. The exact mounting location of the Marker Boards will be determined during construction.

2.12 Section 10010 – Mini-Blinds

- A. Paragraph 1.2 – “Scope of Work”, Paragraph A, shall be modified to read as follows:  
Furnish and install Bali Classic Mini- blinds, 1" louver slats, (provide light master option in BUNK ROOM), manufactured by Bali Corporation, in accordance with specifications, drawings, and contract documents. (At exterior windows adjacent to doors, provide classic blind with lite channels). Levolor is an approved equal.

- B. Paragraph 1.4 – “Submittals”, Paragraph A, “Product Information”, shall be modified to read as follows:  
Product Information: Submit Bali’s product literature, finish options, and installation instructions.
  - C. Paragraph 2.1 – “Manufacturer and Product Description”, Paragraph A shall be modified to read as follows:  
Acceptable product: Bali Classics Aluminum blinds, or Levolor Corporation -Monaco (Contract) 1", with light master option on BUNK ROOM windows, or approved equal.
  - D. Part 2 – “Products”, Paragraph B “Materials”, Item 5 shall be modified to read as follows:  
(5) Drum and Cradle shall be provided for each ladder. Drums shall be of low friction thermoplastic and provided for each ladder.
  - E. Part 2 – “Products”, Paragraph B “Materials”, Item 8 shall be modified to read as follows:  
(8) Installation Brackets shall be rivet-hinged from cover phosphate-treated steel with urethane primer and polyester baked enamel finish to match headrail. Mounting holes shall be located to accommodate overhead, side, or face mounting.
- 2.13 Section 10425 – Interior/Exterior Signage
- A. Exterior pole signage.  
There will be (5) signs mounted on 2” square posts; (1) ADA-Van Accessible Parking Space, (2) Fire Department Only, (2) Emergency Response Vehicles Only.
  - B. Exterior ID, Back Lit Signage
    - 1. These shall be fabricated, channel letters (31, FIRE STATION, SEDGWICK COUNTY). The back lit lighting shall be red LED in lieu of neon for FIRE STATION and SEDGWICK COUNTY).
    - 2. Sedgwick County Logo Sign.  
This sign shall be fabricated with a white acrylic face. The round sign “box” will be black. The multiple color Sedgwick County Logo will be printed on the white acrylic face. The sign will be lit so the face glows and produces a back lit halo light. The color of the LED shall be white on this sign.
  - C. Interior Signage.
    - 1. All the interior signs shall be 8”x 8”
    - 2. The “Exit” signs are located at the exit doors; directional arrows should not be necessary. The number of “Exit” signs is identified in the Specifications Section 10425.
- 2.14 Section 10501 – Storage Lockers  
The equipment in this section is referred to as “Bunker Gear Storage Racks” and shown on Sheet A1.1, located in room Gear – 119.



2.15 Section 10800

A. Section 8 – Toilet Accessories:

The accessories shall be clarified as follows:

- (5).....Grab Bars (vertical) ..... 3701 x 18"
- (3).....Grab Bars ..... 3701 x 36"
- (3).....Grab Bars ..... 3701 x 42"
- (4).....Toilet Paper Holder..... Provided by Owner, Installed by G.C
- (0).....Mirror A ..... 0620-48" x 36"
- (3).....Mirror B ..... 0620-36" x 36"
- (1).....Mirrors C ..... 0620-18" x 36"
- (0).....Paper Towel Dispensers/Waste Receptacle ..... 046924A
- (7).....Paper Towel Dispensers..... Provided by Owner, Installed by G.C.
- (5).....Soap Dispensers ..... Provided by Owner, Installed by G.C.
- (3).....Shower Curtain Rods ..... 1214 x 48"
- (3).....Shower Curtains- hooks 1200-SHU ..... 1200 x 48" x 72"
- (4).....Towel Pins ..... 7301-S
- (4).....Robe Hooks ..... 7340-S
- (3).....Soap Dishes ..... 7320
- (2).....Napkin Disposal..... 0852
- (2).....Shower Seats..... 8206
- (2).....Mop and Broom Holders ..... 8215
- (3).....Magazine Holder..... Lumen 68469
- (2).....Horizontal Shower Grab Bar #12..... Gamco 15-7/8" x 30- 7/8" 150 Series

2.16 Section 13600 – Pre-Engineered Building Components

A. Paragraph 6.3 – Insulation

1. The roof insulation shall provide an R=30 minimum.
2. Roof insulation is not required in the overhang areas that extend past the condition space provided any and all gaps are closed off and sealed between the uninsulated eaves and the conditioned space.

B. Paragraph 1.2

1. Alliance is an approved PEMB manufacturer. Please refer to item 1.14 in this addendum.

2.17 Section 15230 - Reverse Osmosis Water Filtration System

- A. This system shall be added to this project by Addendum. The new specification section is issued as part of this addendum.

### **III. CHANGES TO THE DRAWINGS:**

#### **3.1 Sheet C1.0**

- A. The 5' wide sidewalk that extends from the patio to the West (to the transformer and generator) shall be deleted (so it looks similar to SP-1 with respect to this walk).
- B. The patio shall be corrected to look like the patio of SP-1 and detailed on SP-3.

#### **3.2 Sheet C3.0**

- A. A revised Sheet C3.0 is issued with this addendum.
- B. The size of the water service shall be changed from 1" to 2". The water service shall be schedule 40 PVC.
- C. The size of the domestic water meter shall be changed from 1" to 2".
- D. Storm Sewer
  - 1. Tapered pipe end sections are required on both ends of the 15" RCP.
  - 2. Grouted Toe-Walls will be required.
  - 3. The rip-rap shall be "light stone" as defined by the City of Wichita.

#### **3.3 Sheet C3.2**

The water service shown on the drawings shall be changed from 1" to 2".

#### **3.4 Sheet L-1**

- A. The Buffalo grass shall be seeded.
- B. Steel edging shall be used around the planting area that borders the flagpole / entry and the landscape screen for the visitor parking.

#### **3.5 Sheet SP-1**

- A. The water service shown on the drawings shall be changed from 1-1/2" to 2".
- B. The South drive leading to the parking behind the fire station does not show curbing on the North side of this drive. Curbing on the North side of this drive shall be added, the paving shall match what is shown on C1.0.
- C. (2) additional Regulator pole signs shall be added, Detail 11/SP4. These signs shall be located on each side of the Fire Truck access to Andale Road.

3.6 Sheet SP-3

A. Trash Gate – Detail “B”

1. The reference to the aluminum trash gates manufacture has been clarified in this addendum. Please refer to the General Notes in this addendum, Specification Section – 05990.
2. The reference to a galvanized steel frame shall be changed to be an aluminum frame.

B. 4-Foot tall Cedar Screen Fence.

The extent of the screen fence is shown on SP-1; the screen is parallel with the East face of the building extending to the South. The screen is placed to hide the two ground mounted Air Cooled Condensing Units South of the Mechanical Room - 104. The screen shall extend South 10’-0”

C. The horizontal rails for the cedar fences shall be treated lumber as shown on detail “F”. The reference to rough-sawn cedar rails on detail “B” shall be changed.

3.7 Sheet SP-4

A. Details showing asphalt paving shall be changed to concrete.

The thickness of the concrete depends on the relative location of the detail, refer to sheet C1.0 for the correct pavement thickness and locations.

B. Detail 11 – Sign

This detail shall change from an ADA Parking sign to a Regulator Sign, “Fire Department Only”. There shall be (2) of these signs, one mounted on each side of the Fire Truck access to Andale Road. These signs are not shown on SP-1, and shall be added.

C. Detail 12 – Sign

The title for this detail shall be corrected to be Regulator Sign. There will be two of these signs, one on each side of the drive to the Fire Department parking on the South. They are identified on Sheet SP-1.

D. Detail 13 – Flume.

There shall be (4) runs of this flume detail, all on the South side of the Fire Station.

1. Two runs are each approximately 30-feet long (running from the South face of the building to the curb on the drive.
2. One run is approximately 20-feet long (starting at the South wall of the Mechanical Room – 104 and extending to the curb of the parking at the main entrance.

3. One run is parallel with the South wall of the Fire Station, beginning from a line even with the East Patio wall and extending East to the flume in item 2. This run shall include the concrete curb up against the exterior fire station wall.
  4. A sketch of this accompanies this addendum.
- E. Detail 22 is not used on this project.
  - F. Detail 23 is a repeat of Detail 1 on Sheet A1.1. Detail 23 shall be deleted from this sheet.
  - G. Detail 24 is the catch basin detail to be used in the Apparatus Bay.
  - H. Detail 25 (short bollards), there shall be (3) three of these bollards on the West side of the Fire Station to protect the two ground mounted Air Cooled Condensing Units
  - I. Detail 26 (tall bollards), these occur both sides of each overhead doors in the Apparatus Bay.
- 3.8 Sheet A1.0
- A. General Notes.
    1. Note 6
      - a. The waterproofing will be installed on the wall surfaces behind the Onyx finish on the walls.
      - b. The ceiling is suspended acoustical tile and waterproofing is not required for the ceiling.
    2. The reference to steam room shall be deleted.
  - B. Wall Types
    1. Wall Type B3 is not used on this project.
- 3.9 Sheet A1.1
- A. Wall Type B3 shown on the East side of Station Office 105 shall change to be wall types B1 and B2.
  - B. Detail 1 – Trench Drain  
This detail is for the Apparatus Bay. The reinforcing for the concrete is shown on detail F7 on Sheet S4.1.
  - C. Storage Room-123
    1. There is no millwork in this room.
    2. The appliance shown in the Southeast corner is the Milnor Extractor provided by the Owner and installed by the General Contractor with utility connections by the Electrical and Plumbing Contractors.

3. The Extractor shall be placed on a concrete service pad, raised above the finished concrete floor 4", refer to F8/S4.1.
  4. There are two rectangles on the North wall. These are both pieces of equipment provided by the Owner and installed by the General. The rectangle with the four circles is an air bottle storage rack. The other rectangle is Bauer 4-cascade air fill station. This unit sits on the floor. There are no utility connections to either of these units. I have attached a photo at the end of this addendum.
- 3.10 Sheet A2.3  
The dashed line that indicates the bunk privacy curtain location is detail 5 on Sheet A2.4. The track and curtain attached to the narrow bulkhead. The curtain is shown and an outline of the track is not shown, but will be installed above the curtain.
- 3.11 Sheet A3.1
- A. Door Schedule
    1. Opening 106c – the have hardware set 7.
    2. Opening 110a – this is an aluminum frame with a solid wood door.
  - B. Door Types
    1. Door Type HM4 shall be corrected to be 6'-4" wide with each door leaf 3'-2" wide.
- 3.12 Sheet A3.3
- A. Pencil Sharpener  
There are two pencil sharpeners; 1) in the Apparatus Bay - 100 at the control desk and 2) in the Station Office – 105.
  - B. Detail 18  
The quarry tile window sills material has been clarified in the General Notes of this addendum, item 1.16. This detail shall be corrected to show the vertical finish (wall to sill transition) shall be with a Schulter – Rondec-Step trim.
- 3.13 Sheet A4.1  
The open detail bubble on Building Elevation "B" is 1/A4.2.
- 3.14 Sheet A5.3
- A. Wall Sections A and B, the galvanized "C" channel connected to each purlin to make the fascia shall be changed to be 8" 14 Ga. track matching detail R5/S5.1.
  - B. Wall Section A, the mezzanine wall cap references a wood cap. The wood cap shall be changed to be concrete masonry, 8" square with eased edges on two sides. Butt the square ends up to the adjacent caps.

Align the grout joints with the wall joists. The finish shall be block filler and paint to match the walls.

3.15 Sheet A6.1

- A. Accessory Legend, there are items listed that are not used in this project. Refer to Specification Section 10800 – Toilet Accessories for the items used.
- B. Enlarged Floor Plan “A”
  - 1. The toilet paper dispenser shall be deleted that is located on the wall immediately North of door opening 111a.
- C. Enlarged Floor Plan “B”
  - 1. Comm Room – 103, the counter top on the West wall shall be clarified to be 1-1/2" thick, 25" wide x 6'-2" long with a plastic laminate finish. In addition to continuous wall cleats, provide wall brackets (3) wall brackets as shown on detail 4/A6.2. The brackets shall be equal to Haefle 287.74.3XX series, black epoxy coated steel with a load capacity of 500 lb. per pair.
  - 2. The detail reference of 14/A7.2 shall be deleted.
  - 3. Mirror type in Toilet 102 shall be revised to indicate Mirror C.
- D. Mirror types on schedule shall be revised to read as follows:  
*Schedule on Drawing to match Specification Section 10800.*

**Mirror A – Not Used**

Stainless Steel Frame with Glass Mirror-  
American Specialties /Approved Equal-  
0620- 48"x 36"

**Mirror B - (3) total, (1) Women's Locker 111, (2) Men's Locker 112**

Stainless Steel Frame with Glass Mirror-  
American Specialties /Approved Equal-  
0620- 36"x 36"

**Mirror C – (1) Toilet 102**

Stainless Steel Frame w/ Glass Mirror-  
American Specialties /Approved Equal-  
0620- 18"x 36"

3.16 Sheet A6.2

The subway ceramic tile, in a running bond pattern that is shown on elevations 14, 11 and 12 is correct. The three colors are WT1b (red), WT1a (grey) and WT1 (white), the actual color names are listed on Sheet A8.1 Finish Legend. The pattern starts on top of the standard counter top height - the first two rows are WT1b (red). There is one row of WT1a (grey) on top of the red. The

balance of the tile above the grey is WT1 (white). At the lower ADA counter height, the amount of red is increased as it extends down to the ADA counter.

- 3.17 Sheet A7.2
- A. Detail 3, the shelf supports should be 4'-0" to match detail 2 on sheet A4.5.
- 3.18 Sheet 8.1
- A. The floor in the three showers shall be recessed 3". The tile floor will use a thick-set grout to set the floor slopes to insure proper flow to the shower trench drains.
  - B. Trench Detail –1
    - 1. The Onyx wall panel is thicker than the mosaic cove base tile. The cove base shall be built out to meet the thickness of the Onyx wall panel as shown.
2. The General Contractor shall coordinate the tile installer with the plumbing contractor to insure the placement of the trench drain will work properly and is located as shown on detail 1 on this sheet.
- 3. The transition between the Onyx and ceramic tile base shall be level (not following the floor slope). This means the bottom tile that meets the cove tile will need to be cut and/or additional tile added to work with the sloped floor.
- C. Room Finish Schedule
    - 1. The base in Women's Shower – 111 shall be B2.
    - 2. The base in the Men's Shower – 112 shall be B2.
    - 3. The millwork notes shall be removed from Physical Cond-109, Decon-118 and Gear-119.
  - D. Finish Legend
    - 1. The Armstrong Circus shall be 578 in lieu of 584, with a tegular edge.
- 3.19 Sheet S1.0
- A. The floor in the three showers shall be recessed 3". The tile floor will use a thick-set grout to set the floor slopes to insure proper flow to the shower trench drains.
- 3.20 Sheet S2.0 – Roof Plan Notes
- A. Note 8 clarification, the note refers to R17/S5.1; this note shall be changed to reference R18/S5.2.
  - B. Note 9 clarification, Mountain Hook, Owner to provide and G.C. is to install.
  - C. Details on the HSS6x6x3/8 members are shown on the revised S5.1 and S5.2 that are issued with this addendum.

- E. Details referencing R30/S5.2 and R31/S5.2 are shown on the revised S5.2 that is issued with this addendum.
  - F. Mezzanine Plan, the lintels for the (5) openings shown on the North wall are L1.
  - G. Detail referencing R21/S5.2 have been corrected on the revised S5.2 that is issued with this addendum.
- 3.21 Sheet S5.1
- A. This sheet has been revised and is reissued with this addendum.
  - B. Sections R6 and R7 have been added to the revised S5.1.
  - C. Section R13A, the Bar Grating shall be galvanized.
- 3.22 Sheet S5.2
- A. This sheet has been revised and is reissued with this addendum.
- 3.23 Sheet P1.1
- A. Please note that there are some plumbing fixtures listed the Specifications, Section 15155 – Plumbing Systems that are not shown on the Fixture Schedule. These are typically not listed as a “P” number but shown as an abbreviation like “FS”= Floor Sink, “MFS” = Floor Sink.
  - B. Storage Room – 123, the Milnor Extractor in the Southeast corner of the room and shall have the designation of P-17. The Milnor Extractor is provided by the Owner, installed by the General Contractor. The Plumbing Contractor shall provide cold and hot water per the Fixture Schedule on P1.1.
  - C. A Floor Sink shall be placed on the North side of the Milnor Extractor, next to the raised concrete pad. Located the floor sink toward the rear of the unit.
  - D. A 3” waste line shall be extended from the Milnor Extractor to the Floor Sink by the Plumbing Contractor. Provide an air gap from the discharge point on the waste line to the Floor Sink grate.
- 3.24 Sheet P1.4
- A. Trench Drain Detail  
This detail is for the Apparatus Bay, and it shall be changed to match the Architectural detail on A1.1. The trench will be site cast concrete in lieu of a HDPE channel insert; the width needs to be 12” as shown on A1.1 to all a shovel to clean out the trench. The grate shall be cast iron per the detail on A1.1. The reinforcing shall be as shown on S4.1, although the profile is per A1.1



- B. The Trench Drain Catch Basin Detail on this sheet shall be deleted.  
The Catch Basin detail on Sheet SP-4, Detail 24 shall be used instead.

#### **IV. CHANGES TO THE ELECTRICAL**

##### **4.1 Sheet E1.1 – Fire Alarm Revisions**

- A. Add photoelectric smoke detector symbol to Fire symbol list (S in hexagon with “P” adjacent to it).
- B. Add “one smoke detector, monitoring of kitchen hood” to first sentence of Fire Alarm System Notes.

##### **4.2 Sheet E1.1 – Public Address System**

- A. Add to the end of the Public Address System note: “PA system head-end equipment will be furnished and installed by Owner.”

##### **4.3 Sheet E1.1 – Light Fixture Schedule**

- A. Add to Type L8 remarks: “U.L. Listed for wet location under covered ceiling.”
- B. Revise Type L9 catalog number to 76R-4-L30/840-DRV-UNV.
- C. Revise Type L14 remarks from 3' long to 2' long.
- D. Revise Type L16 manufacturer from Invue to McGraw-Edison. No change to catalog number.
- E. Revise “TSB” in catalog number for Type L17 to “TS” for Tight Spot rather than Tight Spot Baffle.
- F. The following light fixtures are approved alternates to those scheduled:
  - Type CF1 - Emerson Fan: CF702WW, Switch: #SW90, Light Kit: #F440WW w/ CFGW1 Glass Kit
  - Type CF2 - Concord Fan: #52HUG5WH, Switch: #PD-001
  - Type E1 - Utopia LEDR1-WH  
Isolite RL2LED-2-WH-MBC
  - Type L1 - Day-Brite 2FGG30L840-2-D-UNV-DIM  
Columbia LCAT22-40LWG-EDU-PAF
  - Type L2 - Day-Brite 2FGG45L840-2-D-UNV-DIM  
Columbia LCAT22-40VLG-EDU-PAF
  - Type L3 - Day-Brite 2FGG38L840-4-D-UNV-DIM  
Columbia LCAT24-40MWHE-EDU-PAF

|              |   |
|--------------|---|
| Type L4 -    | Day-Brite 2FGG48L840-4-D-UNV-DIM<br>Columbia LCAT24-40MLG-EDU-PAF   |
| Type L5 -    | Day-Brite 2FGG74L840-4-D-UNV-DIM<br>Columbia LCAT24-40VLG-EDU-PAF   |
| Type L6A/B - | Shelf Lighting ACCENT-4440K (same for both Type L6A & L6B) Omnilight Power Supply qty. of 1: APO-60-E-24, Channel 4' long qty. of 2: OCH-142-4-AL-CL, 8' length light source: GEN-41-HO-CC@8' |
| Type L7 -    | Utopia SS-4-L36-40K-NLE-UNV-GR-SYM<br>Columbia LCR4-40ML-EU-PAF   |
| Type L8 -    | WAC FM-306-940-WT<br>Prescolite LBSLEDA 10L40K8WH   |
| Type L9 -    | Utopia ULW3-2G-4-36LED-40K-UNV<br>Columbia MPS4-40XW-CW-EU-PAF  |
| Type L10 -   | WAC WL-LED220-AM-WT<br>L.C. Doane STPA-SR-VARDM-53-PH-LD  |
| Type L11 -   | Utopia SS-8-L108-40K-NLE-UNV<br>Columbia MPS8-40VL-NL-EU  |
| Type L12 -   | Utopia SS-4-L36-40K-NLE-UNV<br>Columbia MPS4-40ML-NL-EU   |
| Type L13 -   | Day-Brite 2FGG74L840-4-D-UNV-DIM<br>Columbia LCAT24-40XLG-EDU-PAF   |
| Type L14 -   | Picasso Lighting TASK-2-D7-40-80-FW-SM-ND1-W-RW<br>CALI ALS900T-F-WH-4.0K-8W-MO-NF-DRY-120V-RWR-2'  |
| Type L15 -   | Gardco DFL7-A33-16L-1200-NW-G2-UNV-BZ w/ W-BZ<br>Kim KFL2-24L-70-4K7-VF-UNV-K-DB-WM-DB  |
| Type L16 -   | Gardco 102L-32L-700-NW-G1-4-UNV-BZ<br>Hubbell RDI2-24L-70-4K7-4-UNV-DB  |
| Type L17 -   | Gardco DFL7-RSP-16L-700-NW-G2-UNV-BZ w/ SM<br>(STM-218) Kim KFL1-16L-40-4K7-N-UNV-K-DB-SM18-DB  |

- Type L18 - Stonco AL150-NW-G1-AR-3-8-BZ, Pole: Lyte 401-5011-12  
Beacon VPL-64L-135-4K7-3-UNV-AD4-DBT, Pole: Beacon  
RSS-B-12-50-B-1-S2-DBT-VM1  
Lumark PRV-PA2B-740-U-T3-BZ, Pole: as originally specified  
on light fixture schedule
- Type L19 - Eclipse Lighting VTH-4'-LED60-4K-EBU-WH-CMB  
L.C. Doane VSA4-1W57-40/80-VARDM-OP-WH-PH-65
- Type L20 - PMC Lighting ES-325-4-D-S-40K-035-8'-D-WHT-UNV-WL  
PAL ML3WL-D-MO-K40-80-8-J-LOH-F01M-EF-120-DIM1
- Type XE1 - Utopia CXTE-U2-R-W  
Isolite RLC-LED-R-U-WH-MTEB
- Type X1 - Utopia CEX-R-WH  
Isolite RL-AC-R-U-WH-MTEBP

4.4 Sheet E1.2 – Control Center Detail

- A. Approved equal to timer switch is Hubbell TD300W.

4.5 Sheet E2.1 – Lighting Control alternates

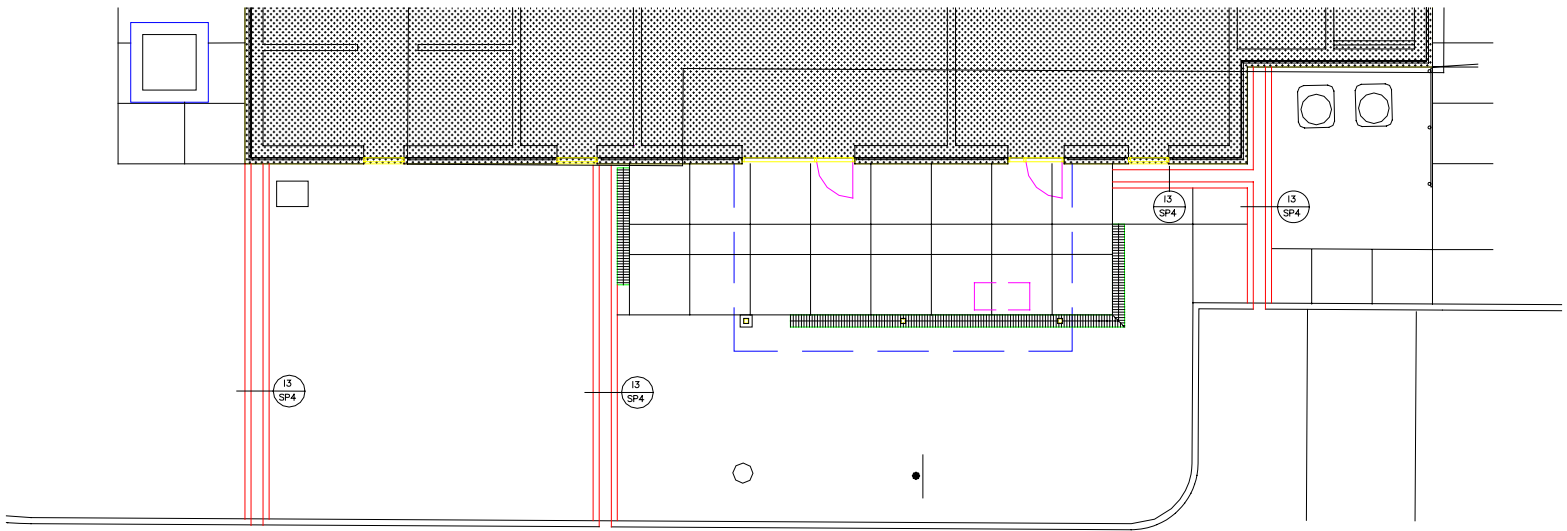
- A. Approved equal to dimmer specified in Plan Note 5 is  
Hubbell PSD710-UNV-GY.
- B. Approved equal to occupancy sensor in Plan Note 6 is Hubbell LHIRS1-G-GY.
- C. Contractor has the option to use Hubbell relay panel CX082S082NM and  
Hubbell photocell DLCP-O in lieu of photocell and 6-pole contractor specified  
in Plan Note 9.

4.6 Sheet E3.1 – Power & Systems Plan

- A. In Station Office 105, add one photoelectric smoke detector near fire alarm  
control panel.
- B. Delete the last sentence from Plan Note 4 “E.C. shall install reader and wire  
to proximity card reader panel in Communications Room 103.” The door access  
control system will be furnished and installed by others with the E.C. providing  
boxes and conduit only.
- C. Add the following to end of Plan Note 17: “Additionally, provide relay and wiring  
as necessary for fire alarm system to monitor the hood.”

This technical drawing shows a cross-section of a building. On the left, a staircase with multiple steps is depicted. To the right of the stairs is a wall. A red line follows the profile of the wall and floor, indicating a structural break or a change in material. A black arrow points to a specific detail on the wall, which appears to be a window or a door frame. The drawing includes various lines representing structural elements, such as the floor, walls, and stairs. There are also some circular symbols and a small rectangular symbol near the staircase.

The red lines are to clarify the extent of curbing on the North side of the South drive. A portion of this curb is shown on C1.0 and none is shown on SP-1. This curbing shall be added by this addendum.



The red lines are to clarify the extent of flumes on the South side of the Fire Station.

## ADDENDUM TWO

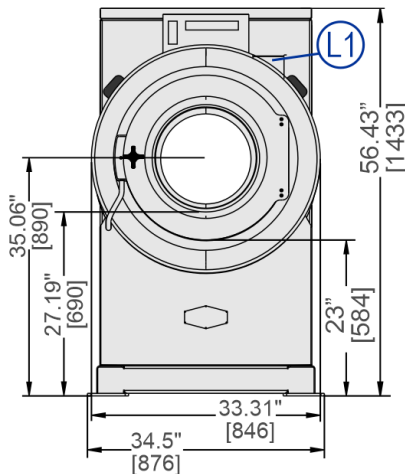
# 30022 T6X

60 LB. (27KG) CAPACITY

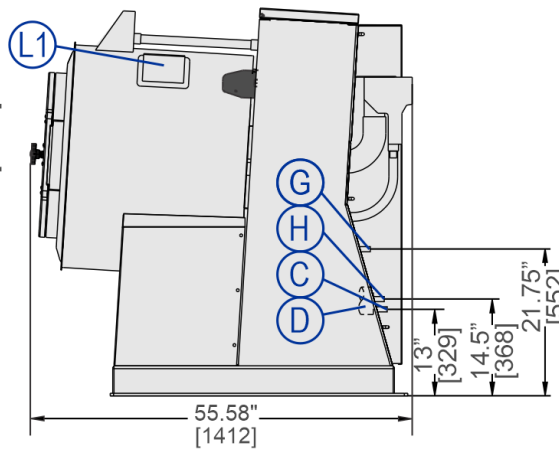
RIGID-MOUNT WASHER-EXTRACTOR

## SPECIFICATION SHEET

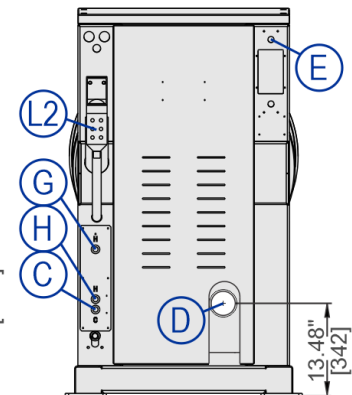
FRONT VIEW



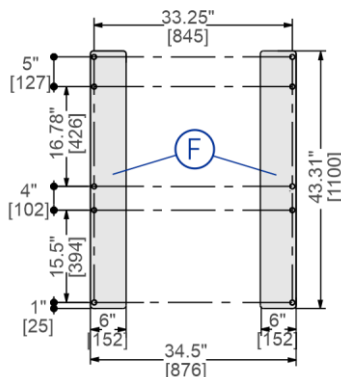
RIGHT SIDE VIEW



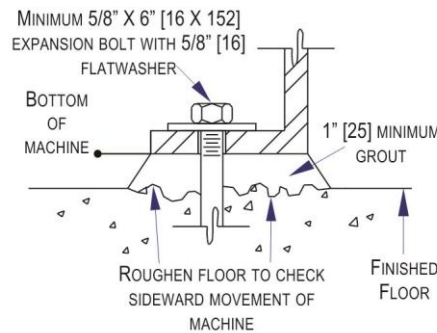
REAR VIEW



FOUNDATION VIEW



ANCHORING DETAIL



FLOOR REQUIREMENT 12" MINIMUM  
RECOMMENDED ▼, ◇, ■

LEGEND

|    |   |
|----|---|
| C  | Cold water inlet, .75" (19 mm) GHT                          |
| D  | Drain to sewer, 3" (76 mm) pipe connection                  |
| E  | Electrical connection                                       |
| F  | Foundation pads, anchor bolt holes .625" (15.8 mm) diameter |
| G  | Hot water (chemical flushing), 0.75" (19 mm) GHT            |
| H  | Hot water inlet, .75" (19 mm) GHT                           |
| L1 | Soap chute  |
| L2 | Liquid supply inlets  |

### MECHANICAL SPECIFICATIONS

|  |  |
|--|--|
| Capacity – lb. (kg)                                      | 60 (27)                                  |
| Cylinder Diameter x Depth – in. (mm)                     | 30 x 22 (762 x 559)                      |
| Cylinder Volume – cu. ft. (L)                            | 9 (255)                                  |
| Door Opening – in. (mm)                                  | 15.5 (394)                               |
| Machine Dimensions (W x D x H) – in. (mm)                | 34.5 x 55.58 x 56.43 (876 x 1412 x 1433) |
| Shipping Dimensions (W x D x H) – in. (mm)               | 40 x 64 x 63 (1016x1625x1600)            |
| Motor – HP (kW)  | 4 (2.98)                                 |
| Wash Speed – RPM   | 38                                       |
| Distribution Speed – RPM                                 | 65                                       |
| Extraction Speed – RPM                                   | 573                                      |
| Extraction G-Force                                       | 140                                      |
| Static Weight – lb. (kg) ◇                               | 1344 (609)                               |
| Max. Dynamic Load RMS – lb. (kg) ◇                       | 1590 (721)                               |
| Frequency (Hz)   | 10                                       |
| Water Pressure (Required) – psi (bar)                    | 5-75 (0.34-5.17)                         |
| Water Valve Cv Rating at 72°F (22°C)                     | 1.5 (5.7)                                |
| Minimum Recommended Distance Between Machines – in. (mm) | 6 (152.4)                                |

### ELECTRICAL SPECIFICATIONS

| Voltage      | Running Amps | Fuse (Amps) | Circuit Breaker (Amps) |
|--------------|--------------|-------------|------------------------|
| 220/3/50-60  | 7            | FRN15       | 15                     |
| 208,240/1/60 | 14/12        | FRN20       | 20                     |
| 208,240/3/60 | 8/7          | FRN15       | 15                     |
| 380/3/50-60  | 4.5          | FRS15       | 15                     |
| 415/3/50     | 4.5          | FRS15       | 15                     |
| 480/3/60     | 3.5          | FRS15       | 15                     |

See Fuse and Wire Size manual MAEFUSE1BE for safety information.  
Contact factory regarding single phase availability.

▼ See dimensional drawing for complete details.

✦ It is the sole responsibility of the owner/user to assure that the floor and/or any other supporting structure exceeds not only all applicable building codes, but also that the floor and/or any other supporting structure for each washer-extractor or group of washer-extractors has sufficient strength and rigidity (i.e., a natural or resonant frequency many times greater than the rotational machine speed with a reasonable factory of safety) to support the weight of all the fully loaded machine(s) including the weight of the water and goods, and including the published 360° rotating sinusoidal RMS forces that are transmitted by the machine(s). Contact the factory for additional machine data for use by a structural engineer.

■ Machine bases made from concrete should either be part of a monolithic pour or should be tied into foundation and not isolated from existing floor.



# 30022 T6X

60 LB. (27KG) CAPACITY  
RIGID-MOUNT WASHER-EXTRACTOR

## SPECIFICATION SHEET

### Standard Features:

- RinSave® water saving technology
- 4 speeds
- E-P Express® programmable controller
- Vacuum fluorescent display
- Single-motor inverter drive
- Tall, lifting ribs
- High M.A.F. (Mechanical Action Factor)
- Large cylinder perforations
- Fresh-water flushing chemical manifold
- Auto tension V-belt drive
- Six (6) liquid chemical injection ports
- Control reads in English/second language
- 5-year limited warranty on frame, cylinder & shell



### Optional Features:

- Prison package
- Faster fill water valves

### Why Purchase Milnor?

- Larger cylinder volume than most competitive similar sized washer-extractors provides *greater productivity*. More linen washed per day, or fewer hours required to process. **BENEFIT: Saves labor.**
- Greater cylinder perforated-area generates *better wash quality, better rinsing and better extraction*. **BENEFIT: Better extraction saves dryer fuel.**
- Faster process times reduce fabric wear, promoting *longer linen life!* **BENEFIT: Saves linen replacement costs.**
- Tall perforated ribs provide excellent lift and high drop. **BENEFIT: Greater mechanical action (M.A.F.) leads to better wash quality.**
- 140-G high extract provides excellent moisture removal. Lower extract speeds are available for uniforms, delicate textiles and blended fabrics. **BENEFIT: Better extraction saves dryer fuel.**
- E-P Express Controller with vacuum fluorescent display allows operator to choose formulas from real words, not codes. Standard controller features English/Spanish (other languages optional). Controller also provides diagnostic and error messages. Shortens training time of new employees. **BENEFIT: Fewer operator errors.**
- Superior product support through local, highly-skilled dealers. **BENEFIT: Faster repairs mean less downtime.**



Safe chemical injection



Superior cylinder design



Solid industrial frame

Contact Milnor for your local, authorized dealer:

Pellerin Milnor Corporation  
P.O. Box 400 • Kenner, LA 70063  
t: 504-467-9591 • f: 504-468-3094



**SECTION 15230**

**REVERSE OSMOSIS WATER FILTRATION SYSTEM**

**1. GENERAL**

The work included under this heading shall be subject to the General Conditions of the entire operation. The Contractor for this portion of the work is required to refer especially thereto.

**2. SCOPE OF WORK**

**2.1 REVERSE OSMOSIS WATER FILTRATION SYSTEM**

The General Contractor shall furnish, deliver, and install, with the following specifications.

Note: Items not specifically mentioned but necessary to complete the work shall be furnished matching in quality and finish the items described or specified.

**MODEL: 01004501 Model AC-30 Culligan Good Water Machine®:  
9-gallon tank and chrome faucet**

2.1.1 Storage Tank Capacity: 9-gallon

2.1.2 Dimensions:

- A. Filter Assembly: 7.5"W x 3"D x 16.5"H -
- B. Storage Tank, Std.: 15.5" Diameter x 24"H

2.1.3 System Flow Sequence: Particle Filter, Activated Carbon Filter, Reverse Osmosis Membrane Filter, Storage Tank, Polishing Filter, Dispensing Faucet

2.1.4 Particle Filter: 5 Micron Spun Polypropylene Activated Carbon Filter

2.1.5 Activated Carbon Filter: Solid Carbon Block

2.1.6 Reverse Osmosis Carbon Fiter: Culligan Aqua-Cleer® Thin Film Composite

2.1.7 Polishing Filter: Cullar G Activated Carbon

2.1.8 Dispensing Faucet: Culligan Aqua-Cleer Faucet Rotary Operation, Stainless Steel and Resin Flow Passages, with Built-in Siphon Break  
1) Finish: Polished Chrome

2.1.9 Daily Production Rate:

- A. Standard: 14.5 gallon (54.88 L)
- B. Product Production Rate without storage tank to atmosphere1:  
AC-30 Models = 30 gpd (114 L/day)

2.1.10 Efficiency Rating: 17.9%

2.1.11 Recovery Rating 4: 30.8%

2.1.12 Ratio of Product to Flush Flow2

- A. Soft Water Applications: 2:3
- B. Hard Water Applications: 1:3 - 1:5

2.1.13 Warranty: Culligan Lifetime Limited Warranty; One-year warranty on filter.

***FIRE STATION #31  
Sedgwick County 2020  
Andale, Kansas***

2.2     **MANUFACTURER**  
Culligan International Company  
One Culligan Parkway Northbrook,  
Illinois USA 60062-6209  
847-205-6000  
www.culligan.com

**3.     DELIVERY**

The General Contractor shall receive and check and be responsible for all components and accessories delivered to the job site. All components and accessories shall be properly stored until ready for application and shall be protected against damage to finish or operation after application. Installation shall be in strict accordance to the factory instructions and all accessories shall be in proper working order and adjustment upon completion of installation.

**4.     GENERAL REQUIREMENTS**

The accessories contractor shall check accessories hardware with details and be responsible for fitting of same. If accessories specified will not fit properly, he shall notify the architect or owner so that adjustment can be made before accessories are ordered.

**End of Section 15230**





2020  
SEDGWICK COUNTY FIRE STATION #31  
24th STREET WEST (ANDALE ROAD)  
ANDALE, KANSAS

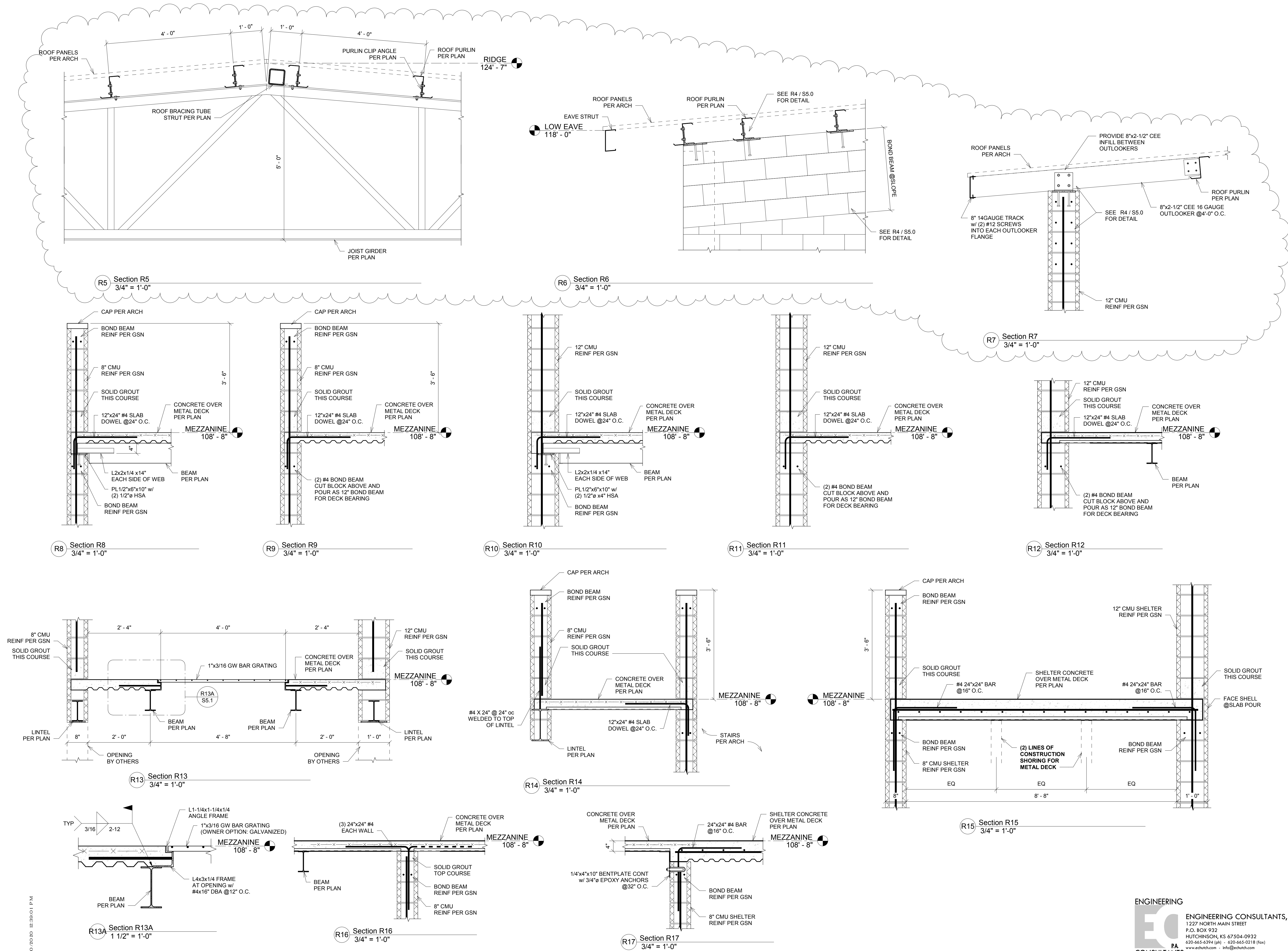
| <b>DRAWINGS ISSUED</b> |             |                    |
|------------------------|-------------|--------------------|
| <b>No</b>              | <b>DATE</b> | <b>ITEM ISSUED</b> |
|                        |             |                    |
|                        |             |                    |
|                        |             |                    |
|                        |             |                    |
|                        |             |                    |
|                        |             |                    |
|                        |             |                    |
|                        |             |                    |
| 2                      | 3/20/20     | CODE REVIEW        |
| 1                      | 2/28/20     | 100% R REVIEW      |

|                     |             |
|---------------------|-------------|
| DATE: FEBRUARY 2020 |             |
| DRAWN BY:           | CHECKED BY: |
| TS                  | BF          |


SHEET

S5.1

OF 8 SHEETS

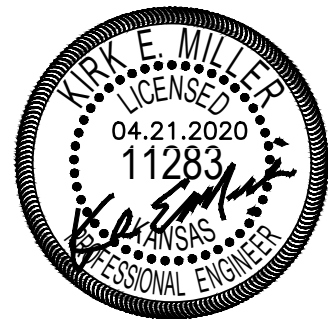
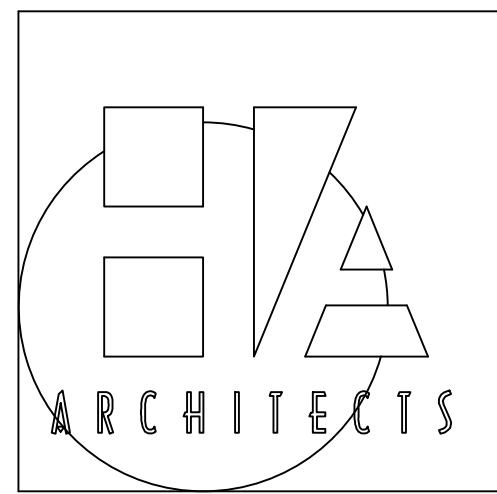


3/20/2020 12:39:01 PM



ENGINEERING CONSULTANTS, P.A.  
1227 NORTH MAIN STREET  
P.O. BOX 932  
HUTCHINSON, KS 67504-0932  
620-665-6394 [ph] - 620-665-0218 [fax]  
[www.ec-hutchnson.com](http://www.ec-hutchnson.com) - [info@ec-hutchnson.com](mailto:info@ec-hutchnson.com)

PA  
CONSULTANTS  
EC PROJECT # 20-011



THIS SHEET HAS BEEN  
SIGNED, SEALED AND  
DATED DIGITALLY  
HANNY & ASSOCIATES, ARCHITECTS  
1726 South Hillside, Wichita, Kansas, 67211  
Phone (316) 683-8965  
Fax (316) 684-1441  
www.hannys.com

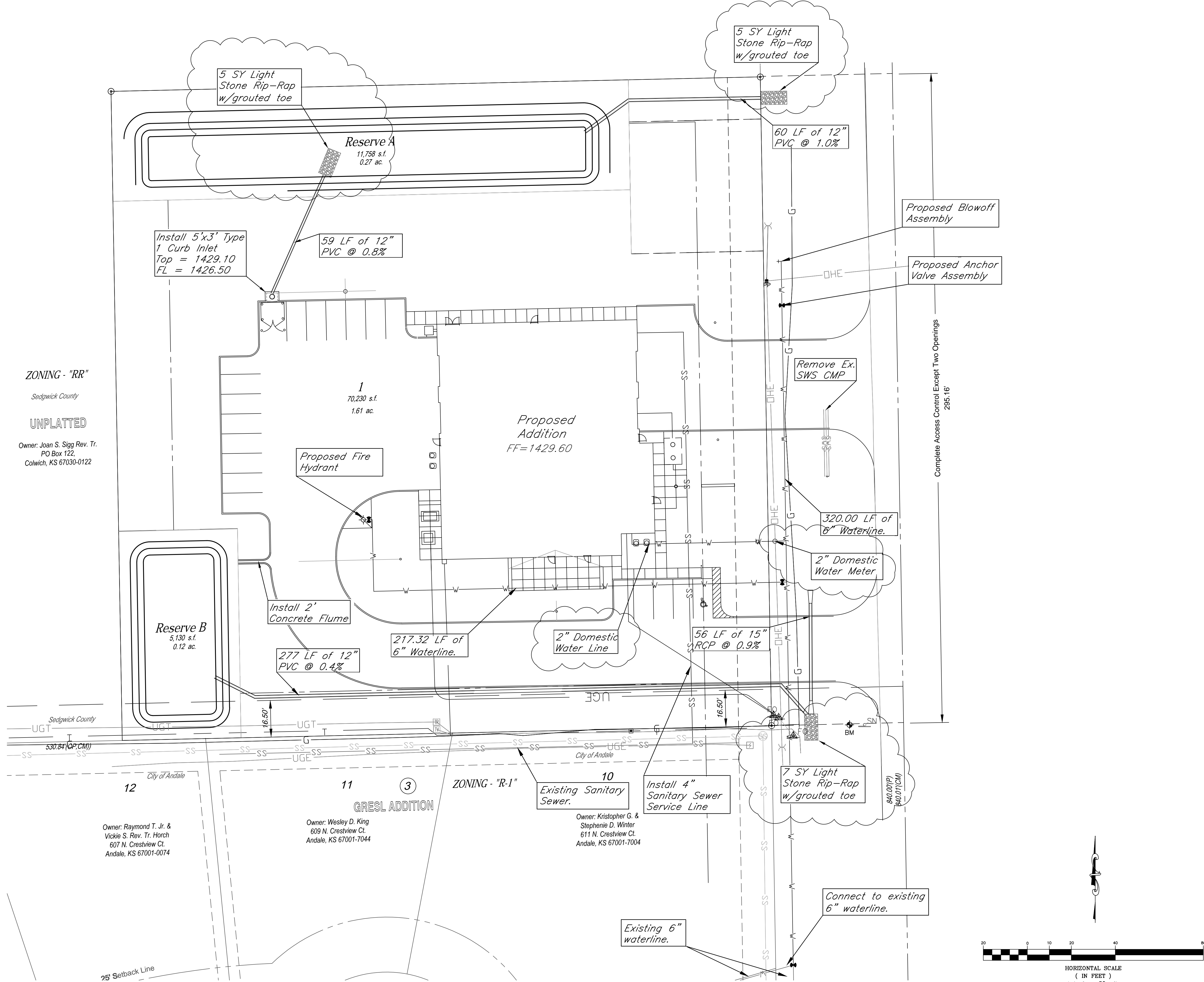
2020  
SEDGWICK COUNTY FIRE STATION #31  
247th STREET WEST (ANDALE ROAD)  
ANDALE, KANSAS

| DRAWINGS ISSUED |          |                  |
|-----------------|----------|------------------|
| NO.             | DATE     | ITEM ISSUED      |
|                 |          |                  |
|                 |          |                  |
|                 |          |                  |
|                 |          |                  |
|                 |          |                  |
|                 |          |                  |
|                 |          |                  |
|                 |          |                  |
|                 |          |                  |
| 4               | 04/21/20 | BID QUESTIONS    |
| 3               | 12/27/19 | REVIEW           |
| 2               | 11/21/19 | COMMITTEE REVIEW |
| 1               | 11/15/19 | REVIEW           |

COMPUTER DRAWING

DATE: DECEMBER, 2019  
DRAWN BY: TC  
CHECKED BY: MRH

SHEET  
C3.0  
OF 1 SHEETS



ZONING - "RR"

Sedgwick County

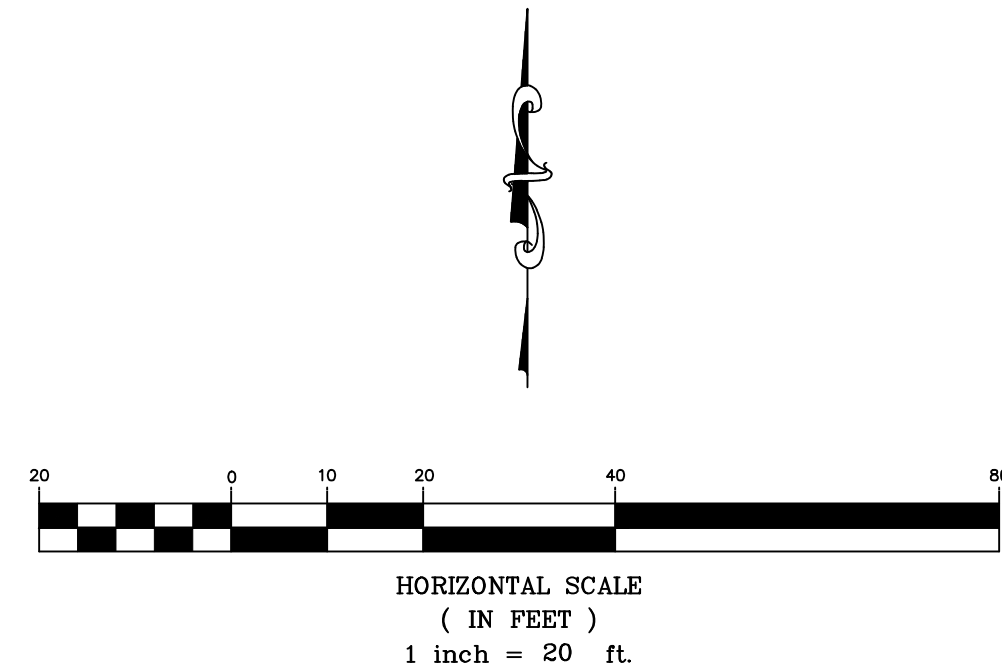
UNPLATTED

Owner: Joan S. Sligg Rev. Tr.  
PO Box 122,  
Colwich, KS 67030-0122

Owner: Raymond T. Jr. &  
Vickie S. Rev. Tr. Horch  
607 N. Crestview Ct.  
Andale, KS 67001-0074

Owner: Wesley D. King  
609 N. Crestview Ct.  
Andale, KS 67001-7044

Owner: Kristopher G. &  
Stephenie D. Winter  
611 N. Crestview Ct.  
Andale, KS 67001-7004





2020  
SEDGWICK COUNTY FIRE STATION #31  
24th STREET WEST (ANDALE ROAD)  
ANDALE, KANSAS

| DRAWINGS ISSUED |         |               |
|-----------------|---------|---------------|
| No              | DATE    | ITEM ISSUED   |
|                 |         |               |
|                 |         |               |
|                 |         |               |
|                 |         |               |
|                 |         |               |
|                 |         |               |
|                 |         |               |
| 2               | 3/20/20 | CODE REVIEW   |
| 1               | 2/28/20 | 100% R REVIEW |

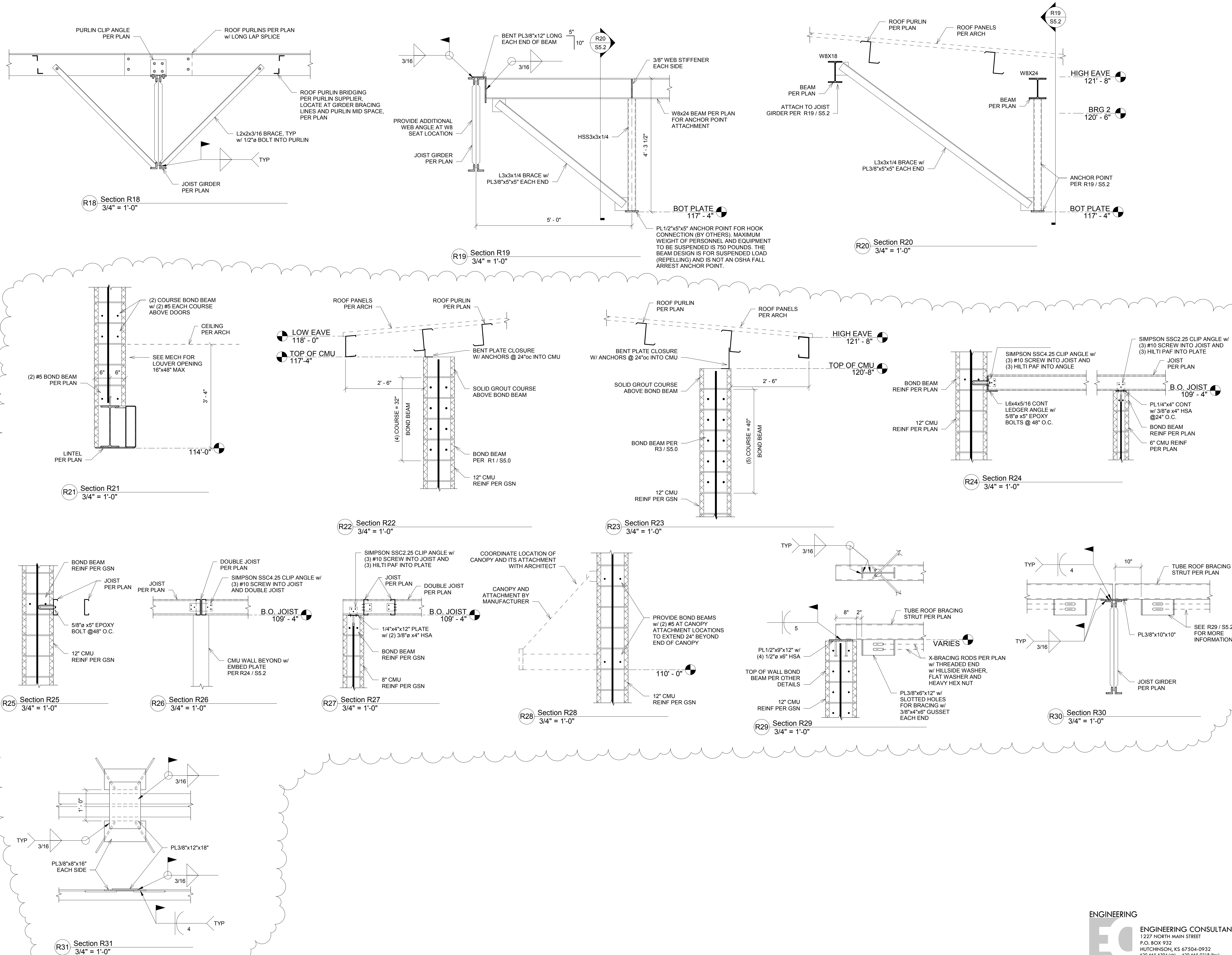
**COMPUTER DRAWING**

|                     |             |
|---------------------|-------------|
| DATE: FEBRUARY 2020 |             |
| DRAWN BY:           | CHECKED BY: |
| TS                  | BF          |

SHEET

S5.2

OF 8 SHEETS



**ENGINEERING**

**EC**

**PA**

**CONSULTANTS**

**EC PROJECT # 20-011**

**ENGINEERING CONSULTANTS, P.A.**  
1227 NORTH MAIN STREET  
P.O. BOX 932  
HUTCHINSON, KS 67504-0932  
620-665-6394 [ph] - 620-665-0218 [fax]  
[www.ec-hutchinson.com](http://www.ec-hutchinson.com) - [info@ec-hutchinson.com](mailto:info@ec-hutchinson.com)