

Public Services Community Programs

Mission: Public Services' mission is to promote health and wellness, independence, and improved functioning for individuals served.

Timothy V. Kaufman
Deputy County Manager

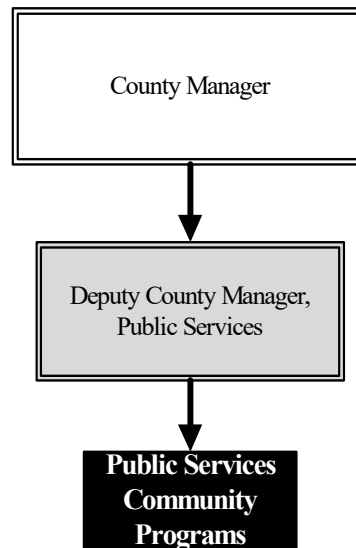
525 N. Main St., Suite 343
Wichita, KS 67203
316.660.7674

tim.kaufman@sedgwick.gov

Overview

Public Services Community Programs is involved in a number of initiatives across the County and represents the County in the community with other social service providers.

Sedgwick County provides funding to the Child Advocacy Center (CAC), and previously provided funding to the Nonprofit Chamber of Service (NPCS). The CAC pulls resources and services together under one roof to more efficiently and effectively serve children who have experienced abuse. Stakeholders include: the Kansas Department for Children and Families (DCF), Wichita Police Department (WPD), and the Exploited and Missing Child Unit (EMCU), formed by the Sedgwick County Sheriff's Office. The NPCS works to increase the capacity of nonprofit organizations, to train their staff and boards in ways of efficiency and effectiveness, and to strengthen the overall network of service providers. Funding for NPCS was eliminated in the 2021 budget.



Strategic Goals:

- Support the Child Advocacy Center in its efforts to lead the community in eliminating the suffering of abused children
- Support the Nonprofit Chamber of Service in their efforts to assure collaboration and alliances between nonprofit organizations, and to serve as strong partners in the delivery of quality public services

Highlights

Community Programs Allocations			
	2019 Actual	2020 Revised	2021 Budget
Nonprofit Chamber of Service	\$10,015	\$10,000	-
Child Advocacy Center	\$205,000	\$205,000	\$205,000
Total	\$215,015	\$215,000	\$205,000



Accomplishments and Strategic Results

Accomplishments

One hundred percent of the clients seen by child family advocates are offered additional services for a variety of needs, including but not limited to therapy, basic needs, financial assistance, medical, assistance filing for a Protection From Abuse (PFA) order, and completing an application for Crime Victims Compensation. The CAC is staffed with a Multi-Disciplinary Team made up of employees from a variety of support agencies including DCF, the WPD, the EMCU, social service agencies, and health care providers. These dedicated professionals serve children and families in their time of greatest need.

The NPCCS arranged to add a volunteer staff position through the Volunteers in Service to America (VISTA) volunteer program to increase capacity and assist with programming and fundraising efforts.

Strategic Results

Public Services Community Programs continues to recognize the important role that nonprofits play in the delivery of County services and the desire to assure the availability of strong and effective partners. The NPCCS and the CAC are two examples of leveraging partnerships with community stakeholders so that the needs of those requiring assistance related to Public Health, behavioral health, disabilities, aging, homelessness, and housing are addressed.

In 2019, the CAC was responsible for serving a total of 1,589 abused or neglected children (a reduction of 781 children from 2018) and 1,017 non-offending caregivers. Additionally, the CAC met all eight measured outcomes through the contract monitoring process, including measures related to mental health services referrals and referrals for additional appropriate services.

In 2019, the NPCCS had a total of 165 memberships and served a total of 674 individuals through events and trainings. Additionally, NPCCS met five of six outcomes consistently, including measures related to board member training events, positive participant ratings of training and events, and broadening their funding base.

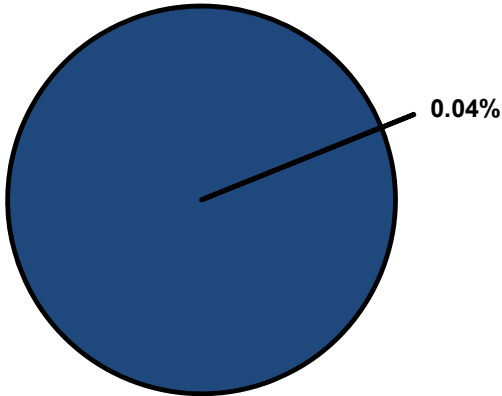


Significant Budget Adjustments

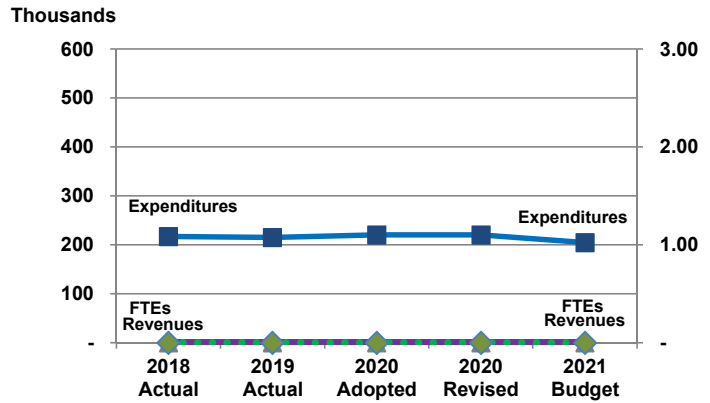
Significant adjustments to Public Services Community Program's 2020 Recommended Budget include a \$15,440 reduction in contractals and commodities due to the elimination of funding for the NPCCS.

Departmental Graphical Summary

Public Services Community Programs
Percent of Total County Operating Budget



Expenditures, Program Revenue & FTEs
All Operating Funds



Budget Summary by Category

	2018 Actual	2019 Actual	2020 Adopted	2020 Revised	2021 Budget	Amount Chg '20 Rev.-'21	% Chg '20 Rev.-'21
Expenditures							
Personnel	-	-	-	-	-	-	-
Contractual Services	216,589	215,000	215,000	215,000	205,000	(10,000)	-4.65%
Debt Service	-	-	-	-	-	-	-
Commodities	255	15	5,440	5,440	-	(5,440)	-100.00%
Capital Improvements	-	-	-	-	-	-	-
Capital Equipment	-	-	-	-	-	-	-
Interfund Transfers	-	-	-	-	-	-	-
Total Expenditures	216,843	215,015	220,440	220,440	205,000	(15,440)	-7.00%
Revenues							
Tax Revenues	-	-	-	-	-	-	-
Licenses and Permits	-	-	-	-	-	-	-
Intergovernmental	-	-	-	-	-	-	-
Charges for Services	-	-	-	-	-	-	-
All Other Revenue	-	-	-	-	-	-	-
Total Revenues	-	-	-	-	-	-	-
Full-Time Equivalentents (FTEs)							
Property Tax Funded	-	-	-	-	-	-	-
Non-Property Tax Funded	-	-	-	-	-	-	-
Total FTEs	-	-	-	-	-	-	-

Budget Summary by Fund

Fund	2018 Actual	2019 Actual	2020 Adopted	2020 Revised	2021 Budget	Amount Chg '20 Rev.-'21	% Chg '20 Rev.-'21
COMCARE	216,843	215,015	220,440	220,440	205,000	(15,440)	-7.00%
Total Expenditures	216,843	215,015	220,440	220,440	205,000	(15,440)	-7.00%

Significant Budget Adjustments from Prior Year Revised Budget

	Expenditures	Revenues	FTEs
Decrease in contractals and commodities due to eliminated funding for the NPCS	(15,440)		
Total	(15,440)	-	-

Budget Summary by Program

Program	Fund	2018 Actual	2019 Actual	2020 Adopted	2020 Revised	2021 Budget	% Chg '20 Rev.-'21	2021 FTEs
Community Programs	202	11,843	10,015	15,440	15,440	-	-100.00%	-
Child Advocacy Center	202	205,000	205,000	205,000	205,000	205,000	0.00%	-
Total		216,843	215,015	220,440	220,440	205,000	-7.00%	-

• Community Programs

Public Services Community Programs provided funding to the Nonprofit Chamber of Service (NPCS). The NPCS works to increase the capacity of non-profit organizations, to train their staff and boards in ways of efficiency and effectiveness, and to strengthen the overall network of service providers. This fund center reflects the County's reorganization in mid-2016. All staff were reassigned to other departments in the budget in 2017. Funding for NPCS was eliminated in the 2021 budget.

Fund(s): Comprehensive Community Care 202

Expenditures	2018 Actual	2019 Actual	2020 Adopted	2020 Revised	2021 Budget	Amnt. Chg. '20 - '21	% Chg. '20 - '21
Personnel	-	-	-	-	-	-	0.0%
Contractual Services	11,589	10,000	10,000	10,000	-	(10,000)	-100.0%
Debt Service	-	-	-	-	-	-	0.0%
Commodities	255	15	5,440	5,440	-	(5,440)	-100.0%
Capital Improvements	-	-	-	-	-	-	0.0%
Capital Equipment	-	-	-	-	-	-	0.0%
Interfund Transfers	-	-	-	-	-	-	0.0%
Total Expenditures	11,843	10,015	15,440	15,440	-	(15,440)	-100.0%
Revenues							
Taxes	-	-	-	-	-	-	0.0%
Intergovernmental	-	-	-	-	-	-	0.0%
Charges For Service	-	-	-	-	-	-	0.0%
All Other Revenue	-	-	-	-	-	-	0.0%
Total Revenues	-	-	-	-	-	-	0.0%
Full-Time Equivalents (FTEs)	-	-	-	-	-	-	0.0%

• Child Advocacy Center

The Child Advocacy Center (CAC) of Sedgwick County was developed to pull resources and services together under one roof to more efficiently and effectively serve children who have experienced abuse. Kansas Department for Children and Families (DCF), Wichita Police Department, and the Sedgwick County Sheriff's Office formed the Exploited and Missing Child Unit (EMCU) in 1985. These stakeholders form a multi-disciplinary team for handling child abuse cases. Services provided by these stakeholders include social work from DCF and investigations from the Sheriff's Office and the Wichita Police Department. COMCARE dedicates a social worker to assist the children and the families with coping with the mental issues regarding these types of cases. All involved in the EMCU have been specially trained to mitigate trauma to child victims, protect the questioning of child victims from validity issues, and more importantly not expose child victims to the suspect.

Fund(s): Comprehensive Community Care 202

Expenditures	2018 Actual	2019 Actual	2020 Adopted	2020 Revised	2021 Budget	Amnt. Chg. '20 - '21	% Chg. '20 - '21
Personnel	-	-	-	-	-	-	0.0%
Contractual Services	205,000	205,000	205,000	205,000	205,000	-	0.0%
Debt Service	-	-	-	-	-	-	0.0%
Commodities	-	-	-	-	-	-	0.0%
Capital Improvements	-	-	-	-	-	-	0.0%
Capital Equipment	-	-	-	-	-	-	0.0%
Interfund Transfers	-	-	-	-	-	-	0.0%
Total Expenditures	205,000	205,000	205,000	205,000	205,000	-	0.0%
Revenues							
Taxes	-	-	-	-	-	-	0.0%
Intergovernmental	-	-	-	-	-	-	0.0%
Charges For Service	-	-	-	-	-	-	0.0%
All Other Revenue	-	-	-	-	-	-	0.0%
Total Revenues	-	-	-	-	-	-	0.0%
Full-Time Equivalents (FTEs)	-	-	-	-	-	-	0.0%