

# Extension Council

**Mission:** *Dedicated to a safe, competitive, food and fiber system and to strong, healthy communities, families, and youth through integrated research, analysis, and education*

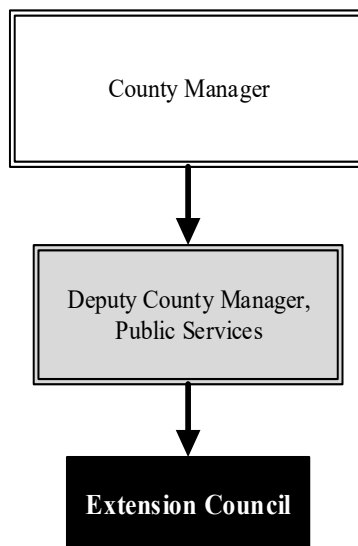
**Jennifer Brantley**  
Sedgwick County Extension  
Director

7001 W. 21st St.  
Wichita, KS 67205  
316.660.0105  
[brantley@ksu.edu](mailto:brantley@ksu.edu)

## Overview

With over 131 years of research and 104 years of extension, K-State Research and Extension (KSRE) has been improving the quality of life and standard of living for Kansans. KSRE - Sedgwick County serves as the headquarters for all extension programs in Sedgwick County. The Extension staff conduct educational programming for adult and youth residents of Sedgwick County. Areas of specialization include: agriculture, family and consumer sciences, 4-H youth programs, horticulture and community development.

The Extension Council is comprised of 24 elected community members, who each are connected to the four program categories (Agriculture/Horticulture, Community Vitality, Family & Consumer Sciences, and 4-H/Youth Development). An Executive Board of nine members is selected from the Extension Council roster and works with the Director to provide oversight of programs and services.



## Strategic Goals:

- Assist families in achieving a balance in their personal and community roles to increase overall emotional stability and health
- Educate citizens on managing the challenges commonly associated with aging and help them prepare for future healthcare
- Support youth in developing life skills to become self-directing adults
- Help fuel the County's agricultural production through innovations to improve crop, fruit, and vegetable varieties; livestock traits and handling systems; and pest control

## Highlights

- Integrity to develop and deliver credible information
- Leadership to serve as an agent of change
- Communication to provide common understanding, involving cooperation and unity
- Inclusion to foster active participation by all, including diversity, respect, and appreciation for co-workers and stakeholders
- Scholarship to foster lifelong learning



# Accomplishments and Strategic Results

## Accomplishments

The Family and Consumer Sciences team has connected with a variety of community partners to provide education to help families through the lifespan. The team was awarded the Wichita Business Journal Healthcare Heroes award for Community Outreach in 2019 in recognition of their dedication to the community.

The Agriculture/Horticulture team connects with the community through all topics related to plants. The group is involved in the City of Wichita Food System Initiative, training those who want to grow small crops, large corporate farming producers, and everyone in between.

Communities such as Mount Hope, Park City, Haysville, Cheney, and Valley Center have utilized Extension programs such as First Impressions and the Kansas PRIDE program.

Two grant writing workshops have hosted over 60 people to provide them with basic information on how to write effective grants.

## Strategic Results

After attending the new Growing Growers program in 2019, 22 attendees indicated in post-workshop surveys that they intend to make changes in their growing endeavors based on information they received at the workshop. Of these attendees, 13 individuals indicated specific practices they intend to adopt or changes they plan to make.

A new Master Food volunteer program was initiated in 2019. The inaugural six participants logged over 260 volunteer hours to deliver programs such as 4-H Food Challenge; Choosing a Healthy Plate; Dining with Diabetes; Healthy Meals Under Pressure; Kid's Cooking Class; Meat Preservation Class, Preserve it Fresh, Preserve it Safe; and That's a Crock: A Healthy Cooking Class for Busy Families.

Volunteers assisted with the Senior Health Insurance Counseling for Kansas (SHICK) program. More than 3,000 hours were logged by the 78 volunteers for 5,457 contacts, which provided Sedgwick County citizens with Medicare Open Enrollment savings of \$997,980 in 2019.

Family development programs, such as Bonding Thru Board Games, continued to grow with the help of partners such as the Goddard Police Department, the Wichita Police Department, the Down Syndrome Society, and more. Over 1,051 individuals participated in these programs in 2019.

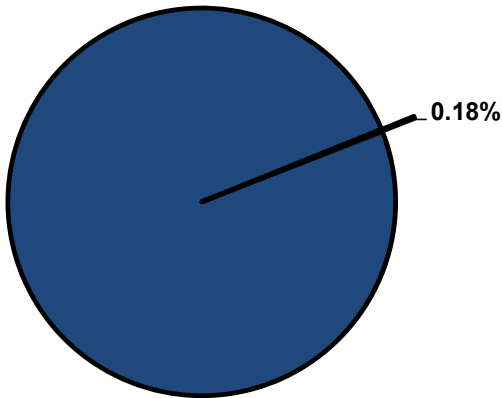


## Significant Budget Adjustments

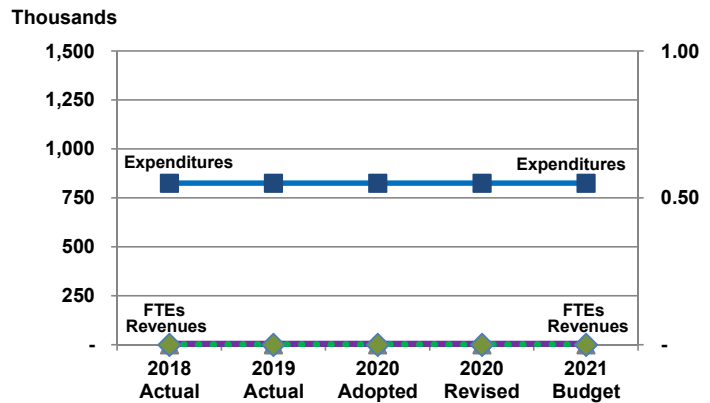
There are no significant adjustments to the Extension Council's 2021 Recommended Budget.

**Departmental Graphical Summary**

**Extension Council**  
Percent of Total County Operating Budget



**Expenditures, Program Revenue & FTEs**  
All Operating Funds

**Budget Summary by Category**

	2018 Actual	2019 Actual	2020 Adopted	2020 Revised	2021 Budget	Amount Chg '20 Rev.-'21	% Chg '20 Rev.-'21
<b>Expenditures</b>							
Personnel	-	-	-	-	-	-	
Contractual Services	825,481	825,481	825,481	825,481	825,481	-	0.00%
Debt Service	-	-	-	-	-	-	
Commodities	-	-	-	-	-	-	
Capital Improvements	-	-	-	-	-	-	
Capital Equipment	-	-	-	-	-	-	
Interfund Transfers	-	-	-	-	-	-	
<b>Total Expenditures</b>	<b>825,481</b>	<b>825,481</b>	<b>825,481</b>	<b>825,481</b>	<b>825,481</b>	<b>-</b>	<b>0.00%</b>
<b>Revenues</b>							
Tax Revenues	-	-	-	-	-	-	
Licenses and Permits	-	-	-	-	-	-	
Intergovernmental	-	-	-	-	-	-	
Charges for Services	-	-	-	-	-	-	
All Other Revenue	-	-	-	-	-	-	
<b>Total Revenues</b>	<b>-</b>	<b>-</b>	<b>-</b>	<b>-</b>	<b>-</b>	<b>-</b>	
<b>Full-Time Equivalents (FTEs)</b>							
Property Tax Funded	-	-	-	-	-	-	
Non-Property Tax Funded	-	-	-	-	-	-	
<b>Total FTEs</b>	<b>-</b>	<b>-</b>	<b>-</b>	<b>-</b>	<b>-</b>	<b>-</b>	

**Budget Summary by Fund**

	2018 Actual	2019 Actual	2020 Adopted	2020 Revised	2021 Budget	Amount Chg '20 Rev.-'21	% Chg '20 Rev.-'21
<b>Fund</b>							
General Fund	825,481	825,481	825,481	825,481	825,481	-	0.00%
<b>Total Expenditures</b>	<b>825,481</b>	<b>825,481</b>	<b>825,481</b>	<b>825,481</b>	<b>825,481</b>	<b>-</b>	<b>0.00%</b>

Expenditures	Revenues	FTEs
--------------	----------	------

<b>Program</b>	<b>Fund</b>	<b>2018 Actual</b>	<b>2019 Actual</b>	<b>2020 Adopted</b>	<b>2020 Revised</b>	<b>2021 Budget</b>	<b>% Chg '20 Rev.-'21</b>	<b>2021 FTEs</b>
Extension Council	110	825,481	825,481	825,481	825,481	825,481	0.00%	-
<b>Total</b>				<b>825,481</b>	<b>825,481</b>	<b>825,481</b>	<b>0.00%</b>	<b>-</b>