

# Technical Education

***Mission:*** To provide quality education and leadership in workforce training that supports economic development for a global community.

**Tom Stolz**  
County Manager

525 N. Main St., Suite 343  
Wichita, KS 67203

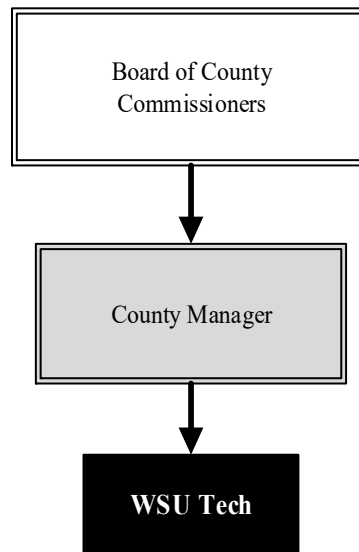
316.660.9393

[thomas.stolz@sedgwick.gov](mailto:thomas.stolz@sedgwick.gov)

## Overview

Initially called Wichita Area Technical College (WATC), Wichita State University (WSU) Tech is dedicated to serving business and industry in south-central Kansas through the delivery of a comprehensive portfolio of programs and services. Faculty and staff strive to develop a highly trained workforce and give Kansas employers a competitive advantage. The program is housed at the National Center for Aviation Training (NCAT), a facility built by Sedgwick County.

WSU Tech is the result of an affiliation between WSU and WATC in 2017. Sedgwick County had provided direct operating support to WATC through 2017. After the affiliation was approved by the State of Kansas, a joint decision between WSU and County officials led to the elimination of the County's direct operating support to WATC and the reduction of funding provided by WSU to the County for the NCAT facility.



## Strategic Goals:

- Provide a national center for aviation training where aviation research and training come together
- Create a facility campus where people can go for retraining, traditional credit based training, or specialized/customized training that is primarily for non-credit hours

## Highlights

- County funding to WSU Tech was eliminated for the 2018 fiscal year, but the agreement was made after the 2018 budget was adopted
- No funding has been or will be included in the Technical Education budget in 2019 and beyond
- WSU funding to the County for the NCAT facility likewise was eliminated in 2018; the funding was included as revenue to the County's Bond & Interest program



# Accomplishments and Strategic Results

## Accomplishments

NCAT is a world class training and research center designed to meet changing aviation/manufacturing business and workforce needs. NCAT is unique because it brings research and technical training under one roof blending them to meet industry needs. In addition to the operations of WSU Tech, WSU's National Institute for Aviation Research (NIAR) provides research and development opportunities and instruction at the facility.

## Strategic Results

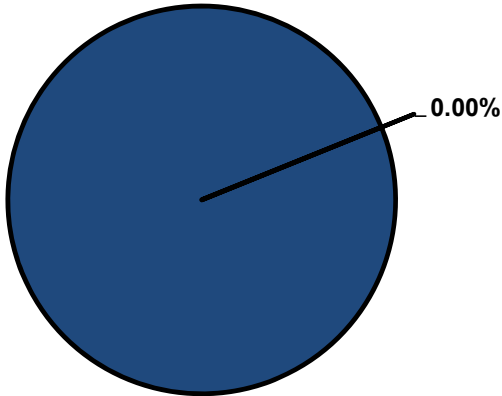


## Significant Budget Adjustments

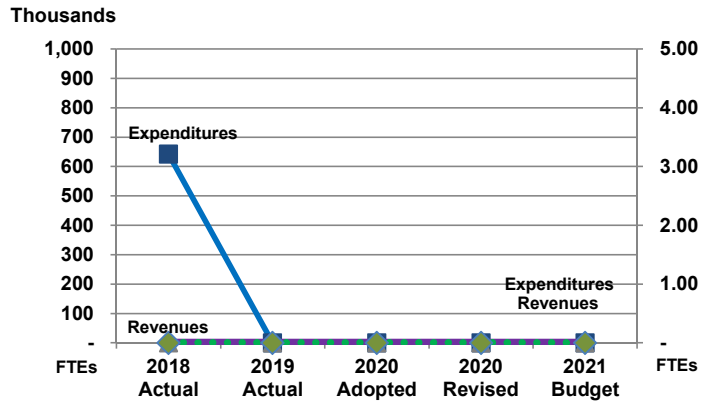
Funding for the WSU Tech program was eliminated in the 2019 budget.

**Departmental Graphical Summary**

**Technical Education**  
Percent of Total County Operating Budget



**Expenditures, Program Revenue & FTEs**  
All Operating Funds



**Budget Summary by Category**

	2018 Actual	2019 Actual	2020 Adopted	2020 Revised	2021 Budget	Amount Chg '20 Rev.-'21	% Chg '20 Rev.-'21
<b>Expenditures</b>							
Personnel	-	-	-	-	-	-	-
Contractual Services	8,299	-	-	-	-	-	-
Debt Service	633,811	-	-	-	-	-	-
Commodities	-	-	-	-	-	-	-
Capital Improvements	-	-	-	-	-	-	-
Capital Equipment	-	-	-	-	-	-	-
Interfund Transfers	-	-	-	-	-	-	-
<b>Total Expenditures</b>	<b>642,110</b>	-	-	-	-	-	-
<b>Revenues</b>							
Tax Revenues	-	-	-	-	-	-	-
Licenses and Permits	-	-	-	-	-	-	-
Intergovernmental	-	-	-	-	-	-	-
Charges for Services	-	-	-	-	-	-	-
All Other Revenue	-	-	-	-	-	-	-
<b>Total Revenues</b>	-	-	-	-	-	-	-
<b>Full-Time Equivalentents (FTEs)</b>							
Property Tax Funded	-	-	-	-	-	-	-
Non-Property Tax Funded	-	-	-	-	-	-	-
<b>Total FTEs</b>	-	-	-	-	-	-	-

**Budget Summary by Fund**

Fund	2018 Actual	2019 Actual	2020 Adopted	2020 Revised	2021 Budget	Amount Chg '20 Rev.-'21	% Chg '20 Rev.-'21
General Fund	642,110	-	-	-	-	-	-
<b>Total Expenditures</b>	<b>642,110</b>	-	-	-	-	-	-

**Significant Budget Adjustments from Prior Year Revised Budget**

Expenditures      Revenues      FTEs

**Total**      -      -      -

**Budget Summary by Program**

Program	Fund	2018 Actual	2019 Actual	2020 Adopted	2020 Revised	2021 Budget	% Chg '20 Rev.-'21	2021 FTEs
WATC	110	633,811	-	-	-	-	0%	-
NCAT Utility Reimb.	110	8,299	-	-	-	-	0%	-
<b>Total</b>		<b>642,110</b>	<b>-</b>	<b>-</b>	<b>-</b>	<b>-</b>	<b>0.00%</b>	<b>-</b>

**• Wichita Area Technical College**

Wichita Area Technical College (WATC) changes lives by training people for high-wage, high-demand jobs. WATC is dedicated to serving business and industry in south-central Kansas through the delivery of a comprehensive portfolio of programs meeting their needs and ensuring students develop the right skills. The program ended after the affiliation between Wichita State University (WSU) and WATC to form WSU Tech in 2017.

**Fund(s): County General Fund 110**

Expenditures	2018 Actual	2019 Actual	2020 Adopted	2020 Revised	2021 Budget	Amnt. Chg. '20 - '21	% Chg. '20 - '21
Personnel	-	-	-	-	-	-	0.0%
Contractual Services	-	-	-	-	-	-	0.0%
Debt Service	633,811	-	-	-	-	-	0.0%
Commodities	-	-	-	-	-	-	0.0%
Capital Improvements	-	-	-	-	-	-	0.0%
Capital Equipment	-	-	-	-	-	-	0.0%
Interfund Transfers	-	-	-	-	-	-	0.0%
<b>Total Expenditures</b>	<b>633,811</b>	<b>-</b>	<b>-</b>	<b>-</b>	<b>-</b>	<b>-</b>	<b>0.0%</b>
<b>Revenues</b>							
Taxes	-	-	-	-	-	-	0.0%
Intergovernmental	-	-	-	-	-	-	0.0%
Charges For Service	-	-	-	-	-	-	0.0%
All Other Revenue	-	-	-	-	-	-	0.0%
<b>Total Revenues</b>	<b>-</b>	<b>-</b>	<b>-</b>	<b>-</b>	<b>-</b>	<b>-</b>	<b>0.0%</b>
<b>Full-Time Equivalents (FTEs)</b>	<b>-</b>	<b>-</b>	<b>-</b>	<b>-</b>	<b>-</b>	<b>-</b>	<b>0.0%</b>

**• National Center for Aviation Training Utility Reimbursement**

National Center for Aviation Training (NCAT) is a world-class training/research center designed to meet changing aviation/manufacturing business and workforce needs. Students receive training for aviation manufacturing and aircraft and power plant mechanics. NCAT is unique because it brings research and technical training under one roof, blending them to meet industry needs. WATC, under the direction of Sedgwick County Technical Education & Training Authority, coordinated the training programs and instruction while WSU's National Institute for Aviation Research (NIAR) provided research and development as well as instruction. Sedgwick County reimbursed WATC, as the operator, for utilities, repairs, cleaning, security, and maintenance costs associated with the WSU/NIAR space at NCAT. The funding agreement ended after the affiliation between WSU and WATC to form WSU Tech in 2017.

**Fund(s): County General Fund 110**

Expenditures	2018 Actual	2019 Actual	2020 Adopted	2020 Revised	2021 Budget	Amnt. Chg. '20 - '21	% Chg. '20 - '21
Personnel	-	-	-	-	-	-	0.0%
Contractual Services	8,299	-	-	-	-	-	0.0%
Debt Service	-	-	-	-	-	-	0.0%
Commodities	-	-	-	-	-	-	0.0%
Capital Improvements	-	-	-	-	-	-	0.0%
Capital Equipment	-	-	-	-	-	-	0.0%
Interfund Transfers	-	-	-	-	-	-	0.0%
<b>Total Expenditures</b>	<b>8,299</b>	<b>-</b>	<b>-</b>	<b>-</b>	<b>-</b>	<b>-</b>	<b>0.0%</b>
<b>Revenues</b>							
Taxes	-	-	-	-	-	-	0.0%
Intergovernmental	-	-	-	-	-	-	0.0%
Charges For Service	-	-	-	-	-	-	0.0%
All Other Revenue	-	-	-	-	-	-	0.0%
<b>Total Revenues</b>	<b>-</b>	<b>-</b>	<b>-</b>	<b>-</b>	<b>-</b>	<b>-</b>	<b>0.0%</b>
<b>Full-Time Equivalents (FTEs)</b>	<b>-</b>	<b>-</b>	<b>-</b>	<b>-</b>	<b>-</b>	<b>-</b>	<b>0.0%</b>