

Extension Council

Mission: *Dedicated to a safe, competitive, food and fiber system and to strong, healthy communities, families, and youth through integrated research, analysis, and education.*

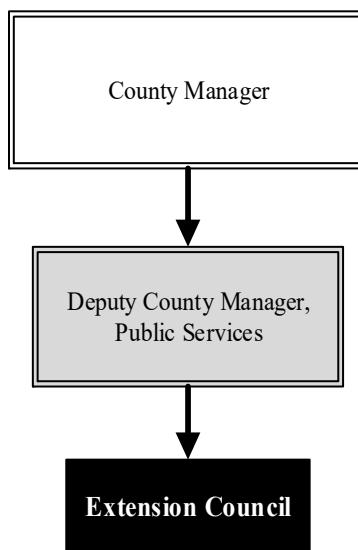
Jennifer Brantley
Sedgwick County Extension Director

7001 W. 21st St.
 Wichita, KS 67205
 316.660.0105
brantley@ksu.edu

Overview

With over 131 years of research and 104 years of extension, K-State Research and Extension (KSRE) has been improving the quality of life and standard of living for Kansans. KSRE - Sedgwick County serves as the headquarters for all extension programs in Sedgwick County. The Extension staff conduct educational programming for adult and youth residents of Sedgwick County. Areas of specialization include: agriculture, family and consumer sciences, 4-H youth programs, horticulture, and community development.

The Extension Council is comprised of 24 elected community members, who each are connected to the four program categories (Agriculture/Horticulture, Community Vitality, Family & Consumer Sciences, and 4-H/Youth Development). An Executive Board of nine members is selected from the Extension Council roster and works with the Director to provide oversight of programs and services.



Strategic Goals:

- *Assist families in achieving a balance in their personal and community roles to increase overall emotional stability and health*
- *Educate citizens on managing the challenges commonly associated with aging and help them prepare for future healthcare*
- *Support youth in developing life skills to become self-directing adults*
- *Help fuel the County's agricultural production through innovations to improve crop, fruit, and vegetable varieties; livestock traits and handling systems; and pest control*

Highlights

- Integrity to develop and deliver credible information
- Leadership to serve as an agent of change
- Communication to provide common understanding, involving cooperation and unity
- Inclusion to foster active participation by all, including diversity, respect, and appreciation for co-workers and stakeholders



Accomplishments and Strategic Results

Accomplishments

A new Hispanic youth community club, Futuros Emprendedores, and a new project club, Fiber Arts, were formed in 2020. A total of 530 Sedgwick County youth participated in 15 active community clubs. A total of 751 youth participated through various outreach programs. Highlighted events in 2020 included a 4-H Food Challenge, a virtual 4-H Achievement Banquet, and showcase events. A virtual livestock auction gave 4-H youth the chance to have their livestock judged after the cancelation of the Sedgwick County Fair. Over 1,292 Sedgwick County youth were impacted through 4-H programming.

In order to provide diabetes education during a global pandemic, the Health, Nutrition, and Wellness agent, a Registered Dietician, led the state team in developing Dining with Diabetes Online. Now these classes can be offered in person and online.

Bonding thru Board Games: Developing Soft Skills Vital for School and Workforce lesson was finished, published, and presented in July of 2020. A new pilot family program, Strengthening Families, was launched for Hispanic mothers at United School District (USD) 259 school, Washington Elementary.

Strategic Results

A free, eight-week course titled Victory Garden 101 was offered entirely online. A total of 934 registrants attended courses that ranged from basic topics such as site and soil selection, to more specific subjects such as salad greens, weeds, insects, and diseases. At least 70 Kansas counties were represented and 394 residents of Sedgwick County were reached through this innovative program.

The Extension Master Gardener program marked its 33rd year of service to the Sedgwick County Community. In 2020, even with complications from the coronavirus disease (COVID-19) pandemic, 327 Sedgwick County Extension Master Gardener Volunteers attended over 4,206 hours of continuing education and shared that knowledge with over 76,146 residents of Sedgwick County. The 9,336 hours of service equates to over \$253,939 using the estimated national value of volunteer hours.

Volunteers assisted with the Senior Health Insurance Counseling for Kansas (SHICK) program. More than 1,300 hours were logged by the 85 volunteers for 4,492 contacts, which provided Sedgwick County citizens with potential Medicare Open Enrollment savings of \$1,328,812 in 2020.

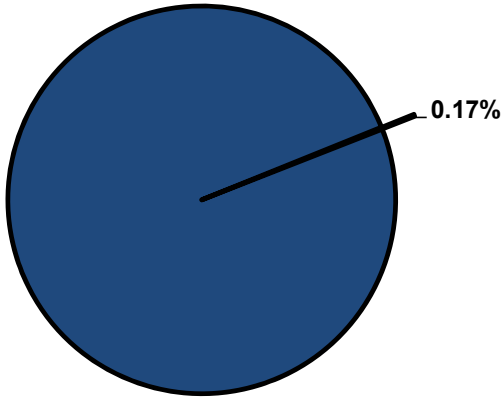


Significant Budget Adjustments

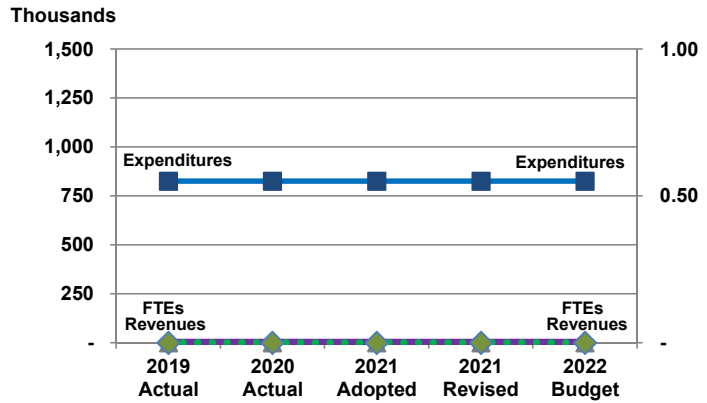
There are no significant adjustments to the Extension Council's 2022 Recommended Budget.

Departmental Graphical Summary

Extension Council
Percent of Total County Operating Budget



Expenditures, Program Revenue & FTEs
All Operating Funds



Budget Summary by Category

	2019 Actual	2020 Actual	2021 Adopted	2021 Revised	2022 Budget	Amount Chg '21 Rev.-'22	% Chg '21 Rev.-'22
Expenditures							
Personnel	-	-	-	-	-	-	-
Contractual Services	825,481	825,481	825,481	825,481	825,481	-	0.00%
Debt Service	-	-	-	-	-	-	-
Commodities	-	-	-	-	-	-	-
Capital Improvements	-	-	-	-	-	-	-
Capital Equipment	-	-	-	-	-	-	-
Interfund Transfers	-	-	-	-	-	-	-
Total Expenditures	825,481	825,481	825,481	825,481	825,481	-	0.00%
Revenues							
Tax Revenues	-	-	-	-	-	-	-
Licenses and Permits	-	-	-	-	-	-	-
Intergovernmental	-	-	-	-	-	-	-
Charges for Services	-	-	-	-	-	-	-
All Other Revenue	-	-	-	-	-	-	-
Total Revenues	-	-	-	-	-	-	-
Full-Time Equivalentents (FTEs)							
Property Tax Funded	-	-	-	-	-	-	-
Non-Property Tax Funded	-	-	-	-	-	-	-
Total FTEs	-	-	-	-	-	-	-

Budget Summary by Fund

Fund	2019 Actual	2020 Actual	2021 Adopted	2021 Revised	2022 Budget	Amount Chg '21 Rev.-'22	% Chg '21 Rev.-'22
General Fund	825,481	825,481	825,481	825,481	825,481	-	0.00%
Total Expenditures	825,481	825,481	825,481	825,481	825,481	-	0.00%

Significant Budget Adjustments from Prior Year Revised Budget

Expenditures Revenues FTEs

Total - - -

Budget Summary by Program

Program	Fund	2019 Actual	2020 Actual	2021 Adopted	2021 Revised	2022 Budget	% Chg '21 Rev.-'22	2022 FTEs
Extension Council	110	825,481	825,481	825,481	825,481	825,481	0.00%	-
Total		825,481	825,481	825,481	825,481	825,481	0.00%	-