

# Office of the Medical Director

**Mission:** To provide state-of-the-art medical direction and clinical oversight to all pre-hospital providers within the Emergency Medical Services System.

**Kevin Brinker, D.O.**  
Interim Medical Director

200 W. Murdock  
Wichita, KS 67203  
316.660.9056

[kevin.brinker@sedgwick.gov](mailto:kevin.brinker@sedgwick.gov)

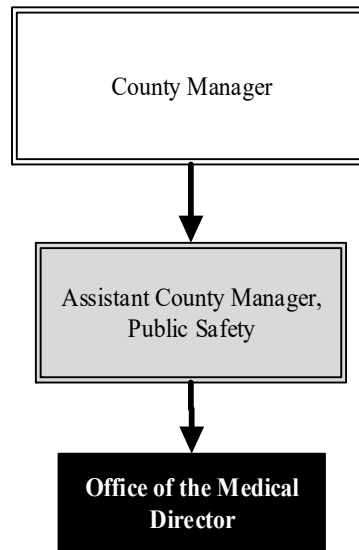
## Overview

The Office of the Medical Director (OMD) provides the clinical leadership to all medical providers and agencies throughout the Emergency Medical Service System (EMSS).

The OMD provides physician-led, patient centered, and team-based oversight for all aspects of pre-hospital patient care.

Within the OMD is the program of Clinical Practice Management.

The OMD's foremost priority is to ensure excellence in pre-hospital patient care, accomplished via the credentialing program, which requires all pre-hospital providers to complete a structured competency assessment before being allowed to provide independent patient care.



## Strategic Goals:

- Advance the pre-hospital clinical systems to ensure that excellent patient care is delivered by all partner agencies
- Provide clinical oversight and regulation to ensure only competent providers deliver patient care within the system
- Advance state and national objectives that benefit the local pre-hospital process

## Highlights

- The OMD Simulation Center is fully functional for the credentialing of providers
- The credentialing process is evaluating all levels of patient care
- Continued partnership with University of Kansas School of Medicine to teach resident physicians Emergency Medical Services (EMS) medical direction
- The Simulation Center is used by the Sheriff's Office for recruit training



# Accomplishments and Strategic Results

## Accomplishments

- A partnership with the Wichita Fire Department and Sedgwick County Fire District 1 has led to reduced call volume for firefighters and keeps units available more often.
- The Program Manager delivered an international speaking engagement in New Zealand.
- The OMD gained authorization from the Medical Society of Sedgwick County to begin a system-wide update to the pre-hospital protocols.

## Strategic Results

The credentialing program has successfully reached over 1,000 actively credentialed providers.



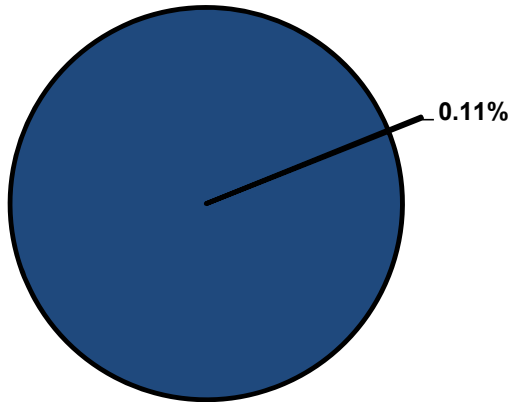
## Significant Budget Adjustments

There are no significant adjustments to the Office of the Medical Director's 2022 budget.

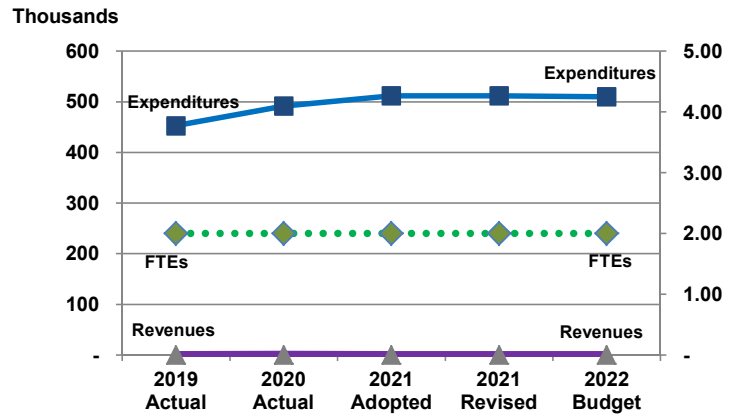
On August 21, 2021, the OMD was reestablished as an independent department in the Division of Public Safety, still serving EMSS.

**Departmental Graphical Summary**

**Office of the Medical Director**  
Percent of Total County Operating Budget



**Expenditures, Program Revenue & FTEs**  
All Operating Funds



**Budget Summary by Category**

	2019 Actual	2020 Actual	2021 Adopted	2021 Revised	2022 Budget	Amount Chg '21 Rev.-'22	% Chg '21 Rev.-'22
<b>Expenditures</b>							
Personnel	395,570	435,181	449,818	449,818	464,761	14,943	3.32%
Contractual Services	43,792	44,978	46,644	46,644	32,023	(14,621)	-31.35%
Debt Service	-	-	-	-	-	-	-
Commodities	13,403	11,633	15,391	15,391	13,000	(2,391)	-15.54%
Capital Improvements	-	-	-	-	-	-	-
Capital Equipment	-	-	-	-	-	-	-
Interfund Transfers	-	-	-	-	-	-	-
<b>Total Expenditures</b>	<b>452,765</b>	<b>491,792</b>	<b>511,853</b>	<b>511,853</b>	<b>509,784</b>	<b>(2,069)</b>	<b>-0.40%</b>
<b>Revenues</b>							
Tax Revenues	-	-	-	-	-	-	-
Licenses and Permits	-	-	-	-	-	-	-
Intergovernmental	-	-	-	-	-	-	-
Charges for Services	-	-	-	-	-	-	-
All Other Revenue	63	488	65	65	66	1	1.66%
<b>Total Revenues</b>	<b>63</b>	<b>488</b>	<b>65</b>	<b>65</b>	<b>66</b>	<b>1</b>	<b>1.66%</b>
<b>Full-Time Equivalents (FTEs)</b>							
Property Tax Funded	2.00	2.00	2.00	2.00	2.00	-	0.00%
Non-Property Tax Funded	-	-	-	-	-	-	-
<b>Total FTEs</b>	<b>2.00</b>	<b>2.00</b>	<b>2.00</b>	<b>2.00</b>	<b>2.00</b>	<b>-</b>	<b>0.00%</b>

**Budget Summary by Fund**

Fund	2019 Actual	2020 Actual	2021 Adopted	2021 Revised	2022 Budget	Amount Chg '21 Rev.-'22	% Chg '21 Rev.-'22
General Fund	452,765	491,792	511,853	511,853	509,784	(2,069)	-0.40%
<b>Total Expenditures</b>	<b>452,765</b>	<b>491,792</b>	<b>511,853</b>	<b>511,853</b>	<b>509,784</b>	<b>(2,069)</b>	<b>-0.40%</b>

**Significant Budget Adjustments from Prior Year Revised Budget**

	Expenditures	Revenues	FTEs
Decrease in contractals due to reallocation of budget authority when OMD was part of EMS	(14,621)		
Decrease in commodities due to medical protocol application being moved to EMS	(2,391)		
<b>Total</b>	(17,012)	-	-

**Budget Summary by Program**

Program	Fund	2019 Actual	2020 Actual	2021 Adopted	2021 Revised	2022 Budget	% Chg '21 Rev.-'22	2022 FTEs
OMD	110	452,765	491,792	511,853	511,853	509,784	-0.40%	2.00
<b>Total</b>		<b>452,765</b>	<b>491,792</b>	<b>511,853</b>	<b>511,853</b>	<b>509,784</b>	<b>-0.40%</b>	<b>2.00</b>

**Personnel Summary By Fund**

Position Titles	Fund	Grade	Budgeted Compensation Comparison			FTE Comparison		
			2021 Adopted	2021 Revised	2022 Budget	2021 Adopted	2021 Revised	2022 Budget
Medical Director	110	CONTRACT	227,141	227,141	227,141	1.00	1.00	1.00
Professional Development Manager	110	GRADE138	80,353	80,354	81,961	1.00	1.00	1.00
<b>Subtotal</b>					<b>309,102</b>			
Add:								
Budgeted Personnel Savings					-			
Compensation Adjustments					17,508			
Overtime/On Call/Holiday Pay					-			
Benefits					138,152			
<b>Total Personnel Budget</b>					<b>464,761</b>	<b>2.00</b>	<b>2.00</b>	<b>2.00</b>