

# Emergency Medical Services

***Mission: Sedgwick County Emergency Medical Services is committed to providing quality out-of-hospital healthcare.***

**Kevin Lanterman**

**Interim Director**

1015 Stillwell St.

Wichita, KS 67213

316.660.7994

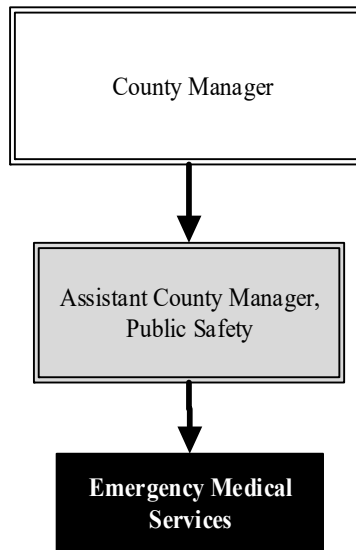
[klanterm@sedgwick.gov](mailto:klanterm@sedgwick.gov)

## Overview

Sedgwick County Emergency Medical Services (EMS) is the exclusive provider of emergency medical response for all cities and rural areas of Sedgwick County. All ambulances are equipped with advanced life support personnel and equipment. Additionally, EMS provides scheduled ambulance transportation services for persons who require routine transfers due to a medical necessity.

Crews are stationed at 18 posts throughout the county.

EMS also provides dedicated emergency medical standby coverage during many local events, including the Wichita Riverfest, Open Streets ICT, and events hosted by INTRUST Bank Arena.



## Strategic Goals:

- *Ensure resources to efficiently and effectively meet the immediate health care demands of the community*
- *Promote a culture that prepares and empowers the workforce to provide quality care and ensure customer satisfaction*
- *Provide compassionate, patient-centered care to positively impact the health and well-being of the community*
- *EMS will respond to all emergency calls in less than 11 minutes 90.0 percent of the time*

## Highlights

- Experienced no service interruptions during the pandemic and operated with resilience and courage
- Continued the Integrated Care Team (ICT-1) partnership with law enforcement and COMCARE to address the needs of vulnerable populations and efficiently align appropriate resources
- Responded to 65,708 requests for service
- Upgraded the ambulance fleet with seven new Ford F550 chassis for deployment in 2022 in addition to continuing the ambulance box remount program, saving \$90,870 per ambulance



# Accomplishments and Strategic Results

## Accomplishments

The Commission of Accreditation of Ambulance Services (CAAS) re-accredited EMS until 2023, which is the industry “gold standard” for ambulance service quality.

EMS has implemented safety initiatives to protect patients and providers including lighter, more ergonomic backpack style equipment bags, automated lift systems for cot loading and unloading, as well as an automated lift system for oxygen bottle loading and unloading.

EMS implemented video laryngoscope intubation equipment, intravenous (IV) pumps, additional Lund University Cardiopulmonary Assist System (LUCAS) devices, and ventilators to maintain the highest standards of equipment and knowledge.

Community Response Vehicles (CRV) are established in Cheney and Clearwater to provide advanced life support first response to calls in those communities effectively reducing the time to paramedic arrival by more than ten minutes.

## Strategic Results

Critical care capabilities have been expanded from a half-day service to around the clock, as well as the creation of a professional development group with the goal of developing and delivering all EMS providers’ continuing education requirements and departmental education needs.

The Department served the community, quite literally, on the front lines of the battle against the coronavirus (COVID-19) pandemic, which has disrupted the lives of so many of the community’s citizens.

Implementation of the Paramedic Education program that will allow Emergency Medical Technicians (EMTs) to achieve paramedic certification while remaining full-time employees. Upon completion, the employee commits to serve Sedgwick County for a minimum of three years. This is a tremendous benefit to employees and eliminates a significant entry barrier to the profession.

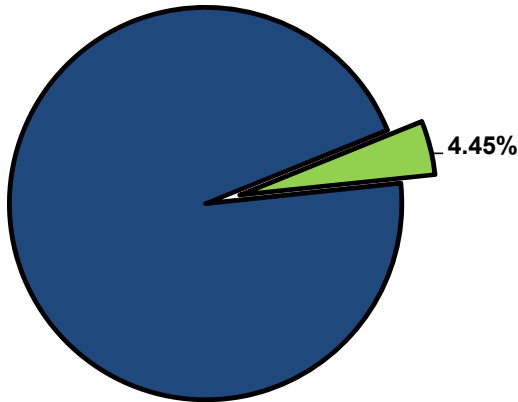


## Significant Budget Adjustments

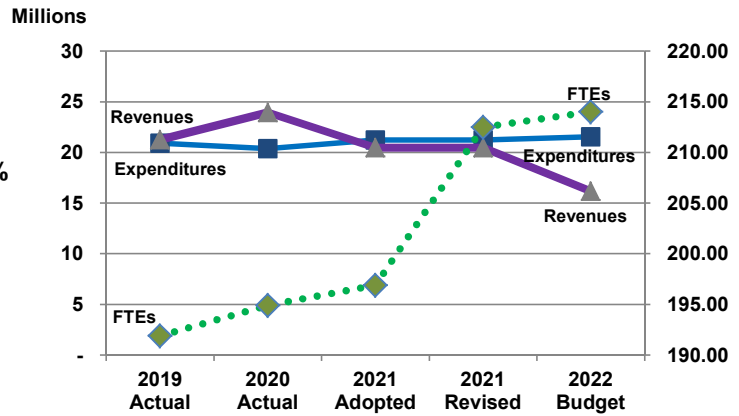
Significant adjustments to Emergency Medical Services’ 2022 budget include a decrease in tax revenues due to consolidating the EMS Fund into the General Fund (\$4,362,270), an increase in personnel costs for the Paramedic and EMT education program (\$185,502), and the addition of 1.0 full-time equivalent (FTE) Paramedic position due to the reorganization of ICT-1 (\$74,066).

**Departmental Graphical Summary**

**Emergency Medical Services**  
Percent of Total County Operating Budget



**Expenditures, Program Revenue & FTEs**  
All Operating Funds



**Budget Summary by Category**

	2019 Actual	2020 Actual	2021 Adopted	2021 Revised	2022 Budget	Amount Chg '21 Rev.-'22	% Chg '21 Rev.-'22
<b>Expenditures</b>							
Personnel	14,709,496	14,183,873	15,934,577	15,934,577	17,031,706	1,097,129	6.89%
Contractual Services	4,734,714	3,954,776	3,921,135	3,920,164	3,017,854	(902,310)	-23.02%
Debt Service	-	-	-	-	-	-	-
Commodities	1,253,060	1,647,939	1,380,738	1,380,738	1,488,221	107,483	7.78%
Capital Improvements	-	-	-	-	-	-	-
Capital Equipment	222,263	584,279	-	971	-	(971)	-100.00%
Interfund Transfers	-	-	-	-	-	-	-
<b>Total Expenditures</b>	<b>20,919,533</b>	<b>20,370,867</b>	<b>21,236,451</b>	<b>21,236,451</b>	<b>21,537,781</b>	<b>301,331</b>	<b>1.42%</b>
<b>Revenues</b>							
Tax Revenues	5,610,733	5,269,741	4,362,270	4,362,270	-	(4,362,270)	-100.00%
Licenses and Permits	-	-	-	-	-	-	-
Intergovernmental	-	-	-	-	-	-	-
Charges for Services	15,638,622	15,504,531	16,107,027	16,107,027	16,173,753	66,726	0.41%
All Other Revenue	4,133	3,179,002	3,154	3,154	11	(3,143)	-99.65%
<b>Total Revenues</b>	<b>21,253,488</b>	<b>23,953,273</b>	<b>20,472,451</b>	<b>20,472,451</b>	<b>16,173,764</b>	<b>(4,298,687)</b>	<b>-21.00%</b>
<b>Full-Time Equivalents (FTEs)</b>							
Property Tax Funded	191.90	194.90	196.90	212.50	214.00	1.50	0.71%
Non-Property Tax Funded	-	-	-	-	-	-	-
<b>Total FTEs</b>	<b>191.90</b>	<b>194.90</b>	<b>196.90</b>	<b>212.50</b>	<b>214.00</b>	<b>1.50</b>	<b>0.71%</b>

**Budget Summary by Fund**

Fund	2019 Actual	2020 Actual	2021 Adopted	2021 Revised	2022 Budget	Amount Chg '21 Rev.-'22	% Chg '21 Rev.-'22
Emergency Medical Services	20,919,533	20,266,634	21,236,451	21,236,451	-	(21,236,451)	-100.00%
EMS Grants	-	1,000	-	-	-	-	-
General Fund	-	103,233	-	-	21,537,781	21,537,781	-
<b>Total Expenditures</b>	<b>20,919,533</b>	<b>20,370,867</b>	<b>21,236,451</b>	<b>21,236,451</b>	<b>21,537,781</b>	<b>301,331</b>	<b>1.42%</b>

**Significant Budget Adjustments from Prior Year Revised Budget**

	Expenditures	Revenues	FTEs
Decrease in tax revenues due to consolidating the EMS fund into the General Fund		(4,362,270)	
Increase in personnel costs for the Paramedic and EMT Education Program	185,502		
Shift of 1.0 FTE Paramedic position due to ICT-1 program reorganization	74,066		1.00
Addition of 0.5 FTE EMT position due to technical adjustment			0.50
<b>Total</b>	<b>259,568</b>	<b>(4,362,270)</b>	<b>1.50</b>

**Budget Summary by Program**

Program	Fund	2019 Actual	2020 Actual	2021 Adopted	2021 Revised	2022 Budget	% Chg '21 Rev.-'22	2022 FTEs
Administration	Multi.	2,234,731	2,254,351	2,309,662	2,357,239	1,627,646	-30.95%	12.35
Accounts Receivable	Multi.	1,021,808	(21,327)	550,000	550,000	550,000	0.00%	-
Training	Multi.	111,198	113,711	124,640	124,640	121,574	-2.46%	1.00
Post 1	Multi.	758,682	726,437	709,586	709,586	765,913	7.94%	8.00
Post 2	Multi.	852,579	778,373	984,568	984,568	990,883	0.64%	11.00
Post 3	Multi.	1,011,814	977,794	1,002,826	1,002,826	1,010,405	0.76%	11.00
Post 4	Multi.	861,433	790,540	912,079	912,079	954,141	4.61%	11.00
Post 5	Multi.	1,172,966	1,217,349	1,119,468	1,119,468	1,180,982	5.49%	12.00
Post 6	Multi.	654,363	633,822	817,065	817,065	845,074	3.43%	9.00
Post 7	Multi.	583,270	550,395	631,531	631,531	619,635	-1.88%	7.00
Post 8	Multi.	603,063	539,089	697,105	695,105	652,787	-6.09%	7.00
Post 9	Multi.	661,112	601,056	707,410	709,410	672,992	-5.13%	8.00
Post 10	Multi.	689,980	694,833	795,679	795,679	818,891	2.92%	9.00
Post 11	Multi.	757,747	747,094	824,028	824,028	852,193	3.42%	9.00
Post 12	Multi.	611,380	604,225	753,849	753,849	748,829	-0.67%	8.00
Post 14	Multi.	606,845	449,063	716,583	716,583	685,805	-4.30%	8.00
Post 15	Multi.	255,369	246,592	274,598	274,598	319,578	16.38%	4.00
Post 16	Multi.	611,917	494,929	615,428	615,428	637,241	3.54%	8.00
Post 17	Multi.	272,894	307,264	251,549	251,549	248,635	-1.16%	4.00
Post 45	Multi.	157,969	159,568	207,313	207,313	213,419	2.95%	2.00
Operations	Multi.	6,176,638	6,893,308	5,967,629	5,914,046	6,671,443	12.81%	61.65
EMSS Support	Multi.	251,778	264,686	263,855	263,855	275,652	4.47%	2.00
TRB	203	-	243,480	-	6,006	-	-100.00%	-
EMS Donations - Safety	258	-	1,000	-	-	-	0.00%	-
Clearwater EMS	110	-	103,233	-	-	-	0.00%	-
ICT-1	110	-	-	-	-	74,066	0.00%	1.00
<b>Total</b>		<b>20,919,533</b>	<b>20,370,867</b>	<b>21,236,451</b>	<b>21,236,451</b>	<b>21,537,781</b>	<b>1.42%</b>	<b>214.00</b>

**Personnel Summary by Fund**

Position Titles	Fund	Grade	Budgeted Compensation Comparison			FTE Comparison		
			2021 Adopted	2021 Revised	2022 Budget	2021 Adopted	2021 Revised	2022 Budget
EMS Deputy Medical Director	110	CONTRACT	-	-	100,000	-	-	1.00
EMS Deputy Director	110	GRADE140	-	-	185,181	-	-	2.00
EMS Colonel	110	GRADE138	-	-	259,015	-	-	3.00
EMS Colonel (40 Hours)	110	GRADE138	-	-	87,548	-	-	1.00
EMS Major	110	GRADE136	-	-	611,887	-	-	8.00
EMS Major (40 Hours)	110	GRADE136	-	-	71,673	-	-	1.00
EMS Systems & Data Analyst	110	GRADE136	-	-	67,891	-	-	1.00
Advance Practice Paramedic	110	GRADE131	-	-	292,836	-	-	5.00
Team Leader	110	GRADE131	-	-	60,418	-	-	1.00
Professional Development Trainer	110	GRADE130	-	-	209,998	-	-	4.00
Team Leader	110	GRADE130	-	-	1,543,514	-	-	27.00
Crew Leader	110	GRADE128	-	-	1,624,755	-	-	33.00
Paramedic	110	GRADE127	-	-	2,227,807	-	-	49.00
EMS Biomedical Technician	110	GRADE126	-	-	86,095	-	-	2.00
Billing Manager	110	GRADE125	-	-	62,155	-	-	1.00
Administrative Support II	110	GRADE120	-	-	33,352	-	-	1.00
Advanced Emergency Medical Technician	110	GRADE120	-	-	134,842	-	-	4.00
EMT	110	GRADE119	-	-	861,590	-	-	28.00
Administrative Support I	110	GRADE118	-	-	28,217	-	-	1.00
PT Advanced Emergency Medical Tech.	110	EXCEPT	-	-	21,280	-	-	1.50
PT Billing/QA Clerk	110	EXCEPT	-	-	49,683	-	-	1.80
PT EMS Billing	110	EXCEPT	-	-	12,271	-	-	0.45
PT EMS Logistics	110	EXCEPT	-	-	25,366	-	-	0.90
PT EMT	110	EXCEPT	-	-	466,415	-	-	24.25
PT Paramedic	110	EXCEPT	-	-	312,045	-	-	12.10
EMS Deputy Medical Director	203	CONTRACT	100,000	100,000	-	1.00	1.00	-
EMS Deputy Director	203	GRADE140	181,550	181,550	-	2.00	2.00	-
EMS Colonel	203	GRADE138	254,416	254,416	-	3.00	3.00	-
EMS Colonel (40 Hours)	203	GRADE138	85,832	85,832	-	1.00	1.00	-
EMS Major	203	GRADE136	404,407	607,209	-	5.00	8.00	-
EMS Major (40 Hours)	203	GRADE136	70,267	70,267	-	1.00	1.00	-
EMS Systems & Data Analyst	203	GRADE136	-	66,560	-	-	1.00	-
Advance Practice Paramedic	203	GRADE127	273,422	273,459	-	5.00	5.00	-
Billing Manager	203	GRADE127	60,937	60,937	-	1.00	1.00	-
Professional Development Trainer	203	GRADE127	202,466	192,825	-	4.00	4.00	-
Team Leader	203	GRADE127	1,400,778	1,479,048	-	26.00	28.00	-
EMS Biomedical Technician	203	GRADE126	84,386	84,406	-	2.00	2.00	-
EMS Systems & Data Analyst	203	GRADE126	63,865	-	-	1.00	-	-
Crew Leader	203	GRADE125	1,378,460	1,497,875	-	30.00	33.00	-
Crew Leader	203	GRADE124	118,360	-	-	3.00	-	-
EMS Major	203	GRADE124	111,165	-	-	3.00	-	-
Paramedic	203	GRADE124	2,013,478	1,970,302	-	48.00	48.00	-
Team Leader	203	GRADE124	77,816	-	-	2.00	-	-
Administrative Support II	203	GRADE120	32,691	32,698	-	1.00	1.00	-
Administrative Support I	203	GRADE118	-	27,661	-	-	1.00	-
Advanced Emergency Medical Technician	203	GRADE118	132,794	127,891	-	4.00	4.00	-
EMT	203	GRADE118	1,103,391	815,807	-	28.00	28.00	-
PT Advanced Emergency Medical Tech.	203	EXCEPT	14,317	21,280	-	0.50	1.50	-
PT Billing/QA Clerk	203	EXCEPT	39,653	49,683	-	1.80	1.80	-
PT EMS Billing	203	EXCEPT	16,763	12,271	-	1.35	0.45	-
PT EMS Logistics	203	EXCEPT	15,072	25,366	-	0.90	0.90	-

**Personnel Summary by Fund**

Position Titles	Fund	Grade	Budgeted Compensation Comparison			FTE Comparison		
			2021 Adopted	2021 Revised	2022 Budget	2021 Adopted	2021 Revised	2022 Budget
PT EMT	203	EXCEPT	312,843	466,415	-	11.75	23.75	-
PT Paramedic	203	EXCEPT	326,790	312,045	-	9.60	12.10	-
<b>Subtotal</b>					<b>9,435,833</b>			
Add:								
Budgeted Personnel Savings					-			
Compensation Adjustments					597,370			
Overtime/On Call/Holiday Pay					1,024,462			
Benefits					5,974,041			
<b>Total Personnel Budget</b>					<b>17,031,706</b>	<b>196.90</b>	<b>212.50</b>	<b>214.00</b>

### • Administration

Emergency Medical Services (EMS) Administration provides command and control for the provision of Advance Life Support (ALS) and ambulance transportation.

#### Fund(s): County General Fund 110 / Emergency Medical Services 203

Expenditures	2019 Actual	2020 Actual	2021 Adopted	2021 Revised	2022 Budget	Amnt. Chg. '21 - '22	% Chg. '21 - '22
Personnel	1,118,004	1,069,454	1,115,764	1,163,341	1,241,762	78,421	6.7%
Contractual Services	1,111,217	1,181,039	1,187,108	1,187,108	378,344	(808,764)	-68.1%
Debt Service	-	-	-	-	-	-	0.0%
Commodities	5,510	3,858	6,790	6,790	7,540	750	111.0%
Capital Improvements	-	-	-	-	-	-	0.0%
Capital Equipment	-	-	-	-	-	-	0.0%
Interfund Transfers	-	-	-	-	-	-	0.0%
<b>Total Expenditures</b>	<b>2,234,731</b>	<b>2,254,351</b>	<b>2,309,662</b>	<b>2,357,239</b>	<b>1,627,646</b>	<b>(729,593)</b>	<b>-31.0%</b>
<b>Revenues</b>							
Taxes	5,610,733	5,269,741	4,362,270	4,362,270	-	(4,362,270)	-100.0%
Intergovernmental	-	-	-	-	-	-	0.0%
Charges For Service	-	-	-	-	-	-	0.0%
All Other Revenue	-	3,176,762	-	-	11	11	0.0%
<b>Total Revenues</b>	<b>5,610,733</b>	<b>8,446,503</b>	<b>4,362,270</b>	<b>4,362,270</b>	<b>11</b>	<b>(4,362,259)</b>	<b>-100.0%</b>
<b>Full-Time Equivalents (FTEs)</b>	<b>11.80</b>	<b>11.80</b>	<b>11.80</b>	<b>12.35</b>	<b>12.35</b>	<b>-</b>	<b>0.0%</b>

### • Accounts Receivable

Patient billing, revenue collection, and bad debt collection services are conducted by outside vendors with expertise in medical billing. Revenues collected and contingency fees paid to the vendor are monitored in this program. The vendor is paid a portion of the gross collected amount, pursuant to an existing contract. The actual amount paid to the vendor will change in proportion to the amount of revenue collected.

#### Fund(s): County General Fund 110 / Emergency Medical Services 203

Expenditures	2019 Actual	2020 Actual	2021 Adopted	2021 Revised	2022 Budget	Amnt. Chg. '21 - '22	% Chg. '21 - '22
Personnel	-	-	-	-	-	-	0.0%
Contractual Services	1,021,808	(21,327)	550,000	550,000	550,000	-	0.0%
Debt Service	-	-	-	-	-	-	0.0%
Commodities	-	-	-	-	-	-	0.0%
Capital Improvements	-	-	-	-	-	-	0.0%
Capital Equipment	-	-	-	-	-	-	0.0%
Interfund Transfers	-	-	-	-	-	-	0.0%
<b>Total Expenditures</b>	<b>1,021,808</b>	<b>(21,327)</b>	<b>550,000</b>	<b>550,000</b>	<b>550,000</b>	<b>-</b>	<b>0.0%</b>
<b>Revenues</b>							
Taxes	-	-	-	-	-	-	0.0%
Intergovernmental	-	-	-	-	-	-	0.0%
Charges For Service	15,638,622	15,504,531	16,107,027	16,107,027	16,173,753	66,726	0.4%
All Other Revenue	1,086	-	-	-	-	-	0.0%
<b>Total Revenues</b>	<b>15,639,708</b>	<b>15,504,531</b>	<b>16,107,027</b>	<b>16,107,027</b>	<b>16,173,753</b>	<b>66,726</b>	<b>0.4%</b>
<b>Full-Time Equivalents (FTEs)</b>	<b>-</b>	<b>-</b>	<b>-</b>	<b>-</b>	<b>-</b>	<b>-</b>	<b>0.0%</b>

### • Training

The State of Kansas requires permitted ambulance services to ensure medical responders maintain certifications. To ensure personnel credentials are maintained, EMS Training annually provides all required training.

#### Fund(s): County General Fund 110 / Emergency Medical Services 203

Expenditures	2019 Actual	2020 Actual	2021 Adopted	2021 Revised	2022 Budget	Amnt. Chg. '21 - '22	% Chg. '21 - '22
Personnel	111,198	113,711	124,640	124,640	121,574	(3,065)	-2.5%
Contractual Services	-	-	-	-	-	-	0.0%
Debt Service	-	-	-	-	-	-	0.0%
Commodities	-	-	-	-	-	-	0.0%
Capital Improvements	-	-	-	-	-	-	0.0%
Capital Equipment	-	-	-	-	-	-	0.0%
Interfund Transfers	-	-	-	-	-	-	0.0%
<b>Total Expenditures</b>	<b>111,198</b>	<b>113,711</b>	<b>124,640</b>	<b>124,640</b>	<b>121,574</b>	<b>(3,065)</b>	<b>-2.5%</b>
<b>Revenues</b>							
Taxes	-	-	-	-	-	-	0.0%
Intergovernmental	-	-	-	-	-	-	0.0%
Charges For Service	-	-	-	-	-	-	0.0%
All Other Revenue	500	-	510	510	-	(510)	0.0%
<b>Total Revenues</b>	<b>500</b>	<b>-</b>	<b>510</b>	<b>510</b>	<b>-</b>	<b>(510)</b>	<b>0.0%</b>
<b>Full-Time Equivalents (FTEs)</b>	<b>1.00</b>	<b>1.00</b>	<b>1.00</b>	<b>1.00</b>	<b>1.00</b>	<b>-</b>	<b>0.0%</b>

### • Post 1

EMS Post 1, located at 2622 West Central Avenue, provides primary coverage to the central and west-central areas of the City of Wichita.

#### Fund(s): County General Fund 110 / Emergency Medical Services 203

Expenditures	2019 Actual	2020 Actual	2021 Adopted	2021 Revised	2022 Budget	Amnt. Chg. '21 - '22	% Chg. '21 - '22
Personnel	758,184	725,952	708,836	708,836	765,363	56,526	8.0%
Contractual Services	498	485	750	750	550	(200)	-26.7%
Debt Service	-	-	-	-	-	-	0.0%
Commodities	-	-	-	-	-	-	0.0%
Capital Improvements	-	-	-	-	-	-	0.0%
Capital Equipment	-	-	-	-	-	-	0.0%
Interfund Transfers	-	-	-	-	-	-	0.0%
<b>Total Expenditures</b>	<b>758,682</b>	<b>726,437</b>	<b>709,586</b>	<b>709,586</b>	<b>765,913</b>	<b>56,326</b>	<b>7.9%</b>
<b>Revenues</b>							
Taxes	-	-	-	-	-	-	0.0%
Intergovernmental	-	-	-	-	-	-	0.0%
Charges For Service	-	-	-	-	-	-	0.0%
All Other Revenue	-	-	-	-	-	-	0.0%
<b>Total Revenues</b>	<b>-</b>	<b>-</b>	<b>-</b>	<b>-</b>	<b>-</b>	<b>-</b>	<b>0.0%</b>
<b>Full-Time Equivalents (FTEs)</b>	<b>8.00</b>	<b>8.00</b>	<b>8.00</b>	<b>8.00</b>	<b>8.00</b>	<b>-</b>	<b>0.0%</b>



### • Post 2

EMS Post 2, located at 1903 West Pawnee Street, provides primary coverage to the south and southwestern areas of the City of Wichita.

#### Fund(s): County General Fund 110 / Emergency Medical Services 203

Expenditures	2019 Actual	2020 Actual	2021 Adopted	2021 Revised	2022 Budget	Amnt. Chg. '21 - '22	% Chg. '21 - '22
Personnel	843,825	769,593	975,068	975,068	981,883	6,816	0.7%
Contractual Services	8,753	8,780	9,500	9,500	9,000	(500)	-5.3%
Debt Service	-	-	-	-	-	-	0.0%
Commodities	-	-	-	-	-	-	0.0%
Capital Improvements	-	-	-	-	-	-	0.0%
Capital Equipment	-	-	-	-	-	-	0.0%
Interfund Transfers	-	-	-	-	-	-	0.0%
<b>Total Expenditures</b>	<b>852,579</b>	<b>778,373</b>	<b>984,568</b>	<b>984,568</b>	<b>990,883</b>	<b>6,316</b>	<b>0.6%</b>
<b>Revenues</b>							
Taxes	-	-	-	-	-	-	0.0%
Intergovernmental	-	-	-	-	-	-	0.0%
Charges For Service	-	-	-	-	-	-	0.0%
All Other Revenue	-	-	-	-	-	-	0.0%
<b>Total Revenues</b>	<b>-</b>	<b>-</b>	<b>-</b>	<b>-</b>	<b>-</b>	<b>-</b>	<b>0.0%</b>
<b>Full-Time Equivalents (FTEs)</b>	<b>11.00</b>	<b>11.00</b>	<b>11.00</b>	<b>11.00</b>	<b>11.00</b>	<b>-</b>	<b>0.0%</b>

### • Post 3

EMS Post 3, located at 3002 East Central Avenue, provides primary coverage to the east-central and northeastern areas of the City of Wichita.

#### Fund(s): County General Fund 110 / Emergency Medical Services 203

Expenditures	2019 Actual	2020 Actual	2021 Adopted	2021 Revised	2022 Budget	Amnt. Chg. '21 - '22	% Chg. '21 - '22
Personnel	1,001,508	967,912	991,826	991,826	1,000,405	8,579	0.9%
Contractual Services	10,306	9,883	11,000	11,000	10,000	(1,000)	-9.1%
Debt Service	-	-	-	-	-	-	0.0%
Commodities	-	-	-	-	-	-	0.0%
Capital Improvements	-	-	-	-	-	-	0.0%
Capital Equipment	-	-	-	-	-	-	0.0%
Interfund Transfers	-	-	-	-	-	-	0.0%
<b>Total Expenditures</b>	<b>1,011,814</b>	<b>977,794</b>	<b>1,002,826</b>	<b>1,002,826</b>	<b>1,010,405</b>	<b>7,579</b>	<b>0.8%</b>
<b>Revenues</b>							
Taxes	-	-	-	-	-	-	0.0%
Intergovernmental	-	-	-	-	-	-	0.0%
Charges For Service	-	-	-	-	-	-	0.0%
All Other Revenue	-	-	-	-	-	-	0.0%
<b>Total Revenues</b>	<b>-</b>	<b>-</b>	<b>-</b>	<b>-</b>	<b>-</b>	<b>-</b>	<b>0.0%</b>
<b>Full-Time Equivalents (FTEs)</b>	<b>11.00</b>	<b>11.00</b>	<b>11.00</b>	<b>11.00</b>	<b>11.00</b>	<b>-</b>	<b>0.0%</b>

### • Post 4

EMS Post 4, located at 1100 South Clifton Avenue, provides primary coverage to the southeastern area of the City of Wichita.

#### Fund(s): County General Fund 110 / Emergency Medical Services 203

Expenditures	2019 Actual	2020 Actual	2021 Adopted	2021 Revised	2022 Budget	Amnt. Chg. '21 - '22	% Chg. '21 - '22
Personnel	859,019	788,096	909,079	909,079	951,541	42,461	4.7%
Contractual Services	2,414	2,445	3,000	3,000	2,600	(400)	-13.3%
Debt Service	-	-	-	-	-	-	0.0%
Commodities	-	-	-	-	-	-	0.0%
Capital Improvements	-	-	-	-	-	-	0.0%
Capital Equipment	-	-	-	-	-	-	0.0%
Interfund Transfers	-	-	-	-	-	-	0.0%
<b>Total Expenditures</b>	<b>861,433</b>	<b>790,540</b>	<b>912,079</b>	<b>912,079</b>	<b>954,141</b>	<b>42,061</b>	<b>4.6%</b>
<b>Revenues</b>							
Taxes	-	-	-	-	-	-	0.0%
Intergovernmental	-	-	-	-	-	-	0.0%
Charges For Service	-	-	-	-	-	-	0.0%
All Other Revenue	-	-	-	-	-	-	0.0%
<b>Total Revenues</b>	<b>-</b>	<b>-</b>	<b>-</b>	<b>-</b>	<b>-</b>	<b>-</b>	<b>0.0%</b>
<b>Full-Time Equivalents (FTEs)</b>	<b>11.00</b>	<b>11.00</b>	<b>11.00</b>	<b>11.00</b>	<b>11.00</b>	<b>-</b>	<b>0.0%</b>

### • Post 5

EMS Post 5, located at 698 Caddy Lane, provides primary coverage to the west-central area of the City of Wichita and to western Sedgwick County.

#### Fund(s): County General Fund 110 / Emergency Medical Services 203

Expenditures	2019 Actual	2020 Actual	2021 Adopted	2021 Revised	2022 Budget	Amnt. Chg. '21 - '22	% Chg. '21 - '22
Personnel	1,163,535	1,208,451	1,108,968	1,108,968	1,171,482	62,514	5.6%
Contractual Services	9,431	8,898	10,500	10,500	9,500	(1,000)	-9.5%
Debt Service	-	-	-	-	-	-	0.0%
Commodities	-	-	-	-	-	-	0.0%
Capital Improvements	-	-	-	-	-	-	0.0%
Capital Equipment	-	-	-	-	-	-	0.0%
Interfund Transfers	-	-	-	-	-	-	0.0%
<b>Total Expenditures</b>	<b>1,172,966</b>	<b>1,217,349</b>	<b>1,119,468</b>	<b>1,119,468</b>	<b>1,180,982</b>	<b>61,514</b>	<b>5.5%</b>
<b>Revenues</b>							
Taxes	-	-	-	-	-	-	0.0%
Intergovernmental	-	-	-	-	-	-	0.0%
Charges For Service	-	-	-	-	-	-	0.0%
All Other Revenue	-	-	-	-	-	-	0.0%
<b>Total Revenues</b>	<b>-</b>	<b>-</b>	<b>-</b>	<b>-</b>	<b>-</b>	<b>-</b>	<b>0.0%</b>
<b>Full-Time Equivalents (FTEs)</b>	<b>12.00</b>	<b>12.00</b>	<b>12.00</b>	<b>12.00</b>	<b>12.00</b>	<b>-</b>	<b>0.0%</b>

### • Post 6

EMS Post 6, located at 6401 South Mabel Street, provides primary coverage to the City of Haysville, the south aspect of the City of Wichita, and southwestern Sedgwick County.

#### Fund(s): County General Fund 110 / Emergency Medical Services 203

Expenditures	2019 Actual	2020 Actual	2021 Adopted	2021 Revised	2022 Budget	Amnt. Chg. '21 - '22	% Chg. '21 - '22
Personnel	647,001	627,314	808,565	808,565	838,074	29,509	3.6%
Contractual Services	7,362	6,508	8,500	8,500	7,000	(1,500)	-17.6%
Debt Service	-	-	-	-	-	-	0.0%
Commodities	-	-	-	-	-	-	0.0%
Capital Improvements	-	-	-	-	-	-	0.0%
Capital Equipment	-	-	-	-	-	-	0.0%
Interfund Transfers	-	-	-	-	-	-	0.0%
<b>Total Expenditures</b>	<b>654,363</b>	<b>633,822</b>	<b>817,065</b>	<b>817,065</b>	<b>845,074</b>	<b>28,009</b>	<b>3.4%</b>
<b>Revenues</b>							
Taxes	-	-	-	-	-	-	0.0%
Intergovernmental	-	-	-	-	-	-	0.0%
Charges For Service	-	-	-	-	-	-	0.0%
All Other Revenue	-	-	-	-	-	-	0.0%
<b>Total Revenues</b>	<b>-</b>	<b>-</b>	<b>-</b>	<b>-</b>	<b>-</b>	<b>-</b>	<b>0.0%</b>
<b>Full-Time Equivalents (FTEs)</b>	<b>9.00</b>	<b>9.00</b>	<b>9.00</b>	<b>9.00</b>	<b>9.00</b>	<b>-</b>	<b>0.0%</b>

### • Post 7

EMS Post 7, located at 1535 South 199th Street West, Goddard, provides primary coverage to the Cities of Goddard, Garden Plain, Cheney, and to west, northwestern, and southwestern Sedgwick County.

#### Fund(s): County General Fund 110 / Emergency Medical Services 203

Expenditures	2019 Actual	2020 Actual	2021 Adopted	2021 Revised	2022 Budget	Amnt. Chg. '21 - '22	% Chg. '21 - '22
Personnel	582,247	549,447	630,031	630,031	618,535	(11,496)	-1.8%
Contractual Services	1,023	949	1,500	1,500	1,100	(400)	-26.7%
Debt Service	-	-	-	-	-	-	0.0%
Commodities	-	-	-	-	-	-	0.0%
Capital Improvements	-	-	-	-	-	-	0.0%
Capital Equipment	-	-	-	-	-	-	0.0%
Interfund Transfers	-	-	-	-	-	-	0.0%
<b>Total Expenditures</b>	<b>583,270</b>	<b>550,395</b>	<b>631,531</b>	<b>631,531</b>	<b>619,635</b>	<b>(11,896)</b>	<b>-1.9%</b>
<b>Revenues</b>							
Taxes	-	-	-	-	-	-	0.0%
Intergovernmental	-	-	-	-	-	-	0.0%
Charges For Service	-	-	-	-	-	-	0.0%
All Other Revenue	-	-	-	-	-	-	0.0%
<b>Total Revenues</b>	<b>-</b>	<b>-</b>	<b>-</b>	<b>-</b>	<b>-</b>	<b>-</b>	<b>0.0%</b>
<b>Full-Time Equivalents (FTEs)</b>	<b>7.00</b>	<b>7.00</b>	<b>7.00</b>	<b>7.00</b>	<b>7.00</b>	<b>-</b>	<b>0.0%</b>

### • Post 8

EMS Post 8, located at 501 East 53rd Street North, provides primary coverage to the Cities of Park City and Kechi, and to north and northeastern Sedgwick County.

#### Fund(s): County General Fund 110 / Emergency Medical Services 203

Expenditures	2019 Actual	2020 Actual	2021 Adopted	2021 Revised	2022 Budget	Amnt. Chg. '21 - '22	% Chg. '21 - '22
Personnel	588,452	525,353	681,605	681,605	638,287	(43,318)	-6.4%
Contractual Services	14,611	13,736	15,500	13,500	14,500	1,000	7.4%
Debt Service	-	-	-	-	-	-	0.0%
Commodities	-	-	-	-	-	-	0.0%
Capital Improvements	-	-	-	-	-	-	0.0%
Capital Equipment	-	-	-	-	-	-	0.0%
Interfund Transfers	-	-	-	-	-	-	0.0%
<b>Total Expenditures</b>	<b>603,063</b>	<b>539,089</b>	<b>697,105</b>	<b>695,105</b>	<b>652,787</b>	<b>(42,318)</b>	<b>-6.1%</b>
<b>Revenues</b>							
Taxes	-	-	-	-	-	-	0.0%
Intergovernmental	-	-	-	-	-	-	0.0%
Charges For Service	-	-	-	-	-	-	0.0%
All Other Revenue	-	-	-	-	-	-	0.0%
<b>Total Revenues</b>	<b>-</b>	<b>-</b>	<b>-</b>	<b>-</b>	<b>-</b>	<b>-</b>	<b>0.0%</b>
<b>Full-Time Equivalents (FTEs)</b>	<b>7.00</b>	<b>7.00</b>	<b>7.00</b>	<b>7.00</b>	<b>7.00</b>	<b>-</b>	<b>0.0%</b>

### • Post 9

EMS Post 9, located at 1218 South Webb Road, provides primary coverage to the east-central and southeastern areas of the City of Wichita, and to east and southeastern Sedgwick County.

#### Fund(s): County General Fund 110 / Emergency Medical Services 203

Expenditures	2019 Actual	2020 Actual	2021 Adopted	2021 Revised	2022 Budget	Amnt. Chg. '21 - '22	% Chg. '21 - '22
Personnel	654,767	595,536	700,410	700,410	666,992	(33,418)	-4.8%
Contractual Services	6,345	5,520	7,000	9,000	6,000	(3,000)	-33.3%
Debt Service	-	-	-	-	-	-	0.0%
Commodities	-	-	-	-	-	-	0.0%
Capital Improvements	-	-	-	-	-	-	0.0%
Capital Equipment	-	-	-	-	-	-	0.0%
Interfund Transfers	-	-	-	-	-	-	0.0%
<b>Total Expenditures</b>	<b>661,112</b>	<b>601,056</b>	<b>707,410</b>	<b>709,410</b>	<b>672,992</b>	<b>(36,418)</b>	<b>-5.1%</b>
<b>Revenues</b>							
Taxes	-	-	-	-	-	-	0.0%
Intergovernmental	-	-	-	-	-	-	0.0%
Charges For Service	-	-	-	-	-	-	0.0%
All Other Revenue	-	-	-	-	-	-	0.0%
<b>Total Revenues</b>	<b>-</b>	<b>-</b>	<b>-</b>	<b>-</b>	<b>-</b>	<b>-</b>	<b>0.0%</b>
<b>Full-Time Equivalents (FTEs)</b>	<b>8.00</b>	<b>8.00</b>	<b>8.00</b>	<b>8.00</b>	<b>8.00</b>	<b>-</b>	<b>0.0%</b>

### • Post 10

EMS Post 10, located at 636 North St. Francis Street, provides primary coverage to the central (core) area of the City of Wichita.

#### Fund(s): County General Fund 110 / Emergency Medical Services 203

Expenditures	2019 Actual	2020 Actual	2021 Adopted	2021 Revised	2022 Budget	Amnt. Chg. '21 - '22	% Chg. '21 - '22
Personnel	678,781	684,955	783,679	783,679	808,891	25,211	3.2%
Contractual Services	11,199	9,878	12,000	12,000	10,000	(2,000)	-16.7%
Debt Service	-	-	-	-	-	-	0.0%
Commodities	-	-	-	-	-	-	0.0%
Capital Improvements	-	-	-	-	-	-	0.0%
Capital Equipment	-	-	-	-	-	-	0.0%
Interfund Transfers	-	-	-	-	-	-	0.0%
<b>Total Expenditures</b>	<b>689,980</b>	<b>694,833</b>	<b>795,679</b>	<b>795,679</b>	<b>818,891</b>	<b>23,211</b>	<b>2.9%</b>
<b>Revenues</b>							
Taxes	-	-	-	-	-	-	0.0%
Intergovernmental	-	-	-	-	-	-	0.0%
Charges For Service	-	-	-	-	-	-	0.0%
All Other Revenue	-	-	-	-	-	-	0.0%
<b>Total Revenues</b>	<b>-</b>	<b>-</b>	<b>-</b>	<b>-</b>	<b>-</b>	<b>-</b>	<b>0.0%</b>
<b>Full-Time Equivalents (FTEs)</b>	<b>9.00</b>	<b>9.00</b>	<b>9.00</b>	<b>9.00</b>	<b>9.00</b>	<b>-</b>	<b>0.0%</b>

### • Post 11

EMS Post 11, located at 1410 North Rock Road, Derby, provides primary coverage to the City of Derby, and to southeastern Sedgwick County.

#### Fund(s): County General Fund 110 / Emergency Medical Services 203

Expenditures	2019 Actual	2020 Actual	2021 Adopted	2021 Revised	2022 Budget	Amnt. Chg. '21 - '22	% Chg. '21 - '22
Personnel	755,430	744,904	821,628	821,628	849,793	28,164	3.4%
Contractual Services	2,317	2,191	2,400	2,400	2,400	-	0.0%
Debt Service	-	-	-	-	-	-	0.0%
Commodities	-	-	-	-	-	-	0.0%
Capital Improvements	-	-	-	-	-	-	0.0%
Capital Equipment	-	-	-	-	-	-	0.0%
Interfund Transfers	-	-	-	-	-	-	0.0%
<b>Total Expenditures</b>	<b>757,747</b>	<b>747,094</b>	<b>824,028</b>	<b>824,028</b>	<b>852,193</b>	<b>28,164</b>	<b>3.4%</b>
<b>Revenues</b>							
Taxes	-	-	-	-	-	-	0.0%
Intergovernmental	-	-	-	-	-	-	0.0%
Charges For Service	-	-	-	-	-	-	0.0%
All Other Revenue	-	-	-	-	-	-	0.0%
<b>Total Revenues</b>	<b>-</b>	<b>-</b>	<b>-</b>	<b>-</b>	<b>-</b>	<b>-</b>	<b>0.0%</b>
<b>Full-Time Equivalents (FTEs)</b>	<b>9.00</b>	<b>9.00</b>	<b>9.00</b>	<b>9.00</b>	<b>9.00</b>	<b>-</b>	<b>0.0%</b>

### • Post 12

EMS Post 12, located at 3320 North Hillside Street, provides primary coverage to the north-central and northeastern areas of the City of Wichita, and Sedgwick County.

#### Fund(s): County General Fund 110 / Emergency Medical Services 203

Expenditures	2019 Actual	2020 Actual	2021 Adopted	2021 Revised	2022 Budget	Amnt. Chg. '21 - '22	% Chg. '21 - '22
Personnel	603,747	596,750	745,849	745,849	740,829	(5,020)	-0.7%
Contractual Services	7,633	7,475	8,000	8,000	8,000	-	0.0%
Debt Service	-	-	-	-	-	-	0.0%
Commodities	-	-	-	-	-	-	0.0%
Capital Improvements	-	-	-	-	-	-	0.0%
Capital Equipment	-	-	-	-	-	-	0.0%
Interfund Transfers	-	-	-	-	-	-	0.0%
<b>Total Expenditures</b>	<b>611,380</b>	<b>604,225</b>	<b>753,849</b>	<b>753,849</b>	<b>748,829</b>	<b>(5,020)</b>	<b>-0.7%</b>
<b>Revenues</b>							
Taxes	-	-	-	-	-	-	0.0%
Intergovernmental	-	-	-	-	-	-	0.0%
Charges For Service	-	-	-	-	-	-	0.0%
All Other Revenue	-	-	-	-	-	-	0.0%
<b>Total Revenues</b>	<b>-</b>	<b>-</b>	<b>-</b>	<b>-</b>	<b>-</b>	<b>-</b>	<b>0.0%</b>
<b>Full-Time Equivalents (FTEs)</b>	<b>8.00</b>	<b>8.00</b>	<b>8.00</b>	<b>8.00</b>	<b>8.00</b>	<b>-</b>	<b>0.0%</b>

### • Post 14

EMS Post 14, located at 4030 North Reed Avenue, Maize, provides primary coverage to the City of Maize, the west area of the City of Wichita, and the northwestern aspect of Sedgwick County.

#### Fund(s): County General Fund 110 / Emergency Medical Services 203

Expenditures	2019 Actual	2020 Actual	2021 Adopted	2021 Revised	2022 Budget	Amnt. Chg. '21 - '22	% Chg. '21 - '22
Personnel	598,670	441,233	708,083	708,083	677,305	(30,779)	-4.3%
Contractual Services	8,175	7,831	8,500	8,500	8,500	-	0.0%
Debt Service	-	-	-	-	-	-	0.0%
Commodities	-	-	-	-	-	-	0.0%
Capital Improvements	-	-	-	-	-	-	0.0%
Capital Equipment	-	-	-	-	-	-	0.0%
Interfund Transfers	-	-	-	-	-	-	0.0%
<b>Total Expenditures</b>	<b>606,845</b>	<b>449,063</b>	<b>716,583</b>	<b>716,583</b>	<b>685,805</b>	<b>(30,779)</b>	<b>-4.3%</b>
<b>Revenues</b>							
Taxes	-	-	-	-	-	-	0.0%
Intergovernmental	-	-	-	-	-	-	0.0%
Charges For Service	-	-	-	-	-	-	0.0%
All Other Revenue	-	-	-	-	-	-	0.0%
<b>Total Revenues</b>	<b>-</b>	<b>-</b>	<b>-</b>	<b>-</b>	<b>-</b>	<b>-</b>	<b>0.0%</b>
<b>Full-Time Equivalents (FTEs)</b>	<b>8.00</b>	<b>8.00</b>	<b>8.00</b>	<b>8.00</b>	<b>8.00</b>	<b>-</b>	<b>0.0%</b>

### • Post 15

EMS Post 15, located at 3537 North Webb Road, Wichita, provides primary coverage to eastern Bel Aire and to the northeastern aspect of the City of Wichita and Sedgwick County.

#### Fund(s): County General Fund 110 / Emergency Medical Services 203

Expenditures	2019 Actual	2020 Actual	2021 Adopted	2021 Revised	2022 Budget	Amnt. Chg. '21 - '22	% Chg. '21 - '22
Personnel	248,271	239,348	266,598	266,598	312,078	45,480	17.1%
Contractual Services	7,098	7,244	8,000	8,000	7,500	(500)	-6.3%
Debt Service	-	-	-	-	-	-	0.0%
Commodities	-	-	-	-	-	-	0.0%
Capital Improvements	-	-	-	-	-	-	0.0%
Capital Equipment	-	-	-	-	-	-	0.0%
Interfund Transfers	-	-	-	-	-	-	0.0%
<b>Total Expenditures</b>	<b>255,369</b>	<b>246,592</b>	<b>274,598</b>	<b>274,598</b>	<b>319,578</b>	<b>44,980</b>	<b>16.4%</b>
<b>Revenues</b>							
Taxes	-	-	-	-	-	-	0.0%
Intergovernmental	-	-	-	-	-	-	0.0%
Charges For Service	-	-	-	-	-	-	0.0%
All Other Revenue	-	-	-	-	-	-	0.0%
<b>Total Revenues</b>	<b>-</b>	<b>-</b>	<b>-</b>	<b>-</b>	<b>-</b>	<b>-</b>	<b>0.0%</b>
<b>Full-Time Equivalents (FTEs)</b>	<b>4.00</b>	<b>4.00</b>	<b>4.00</b>	<b>4.00</b>	<b>4.00</b>	<b>-</b>	<b>0.0%</b>

### • Post 16

EMS Post 16, located at 5055 South Oliver Street, provides primary coverage to the southeastern area of the City of Wichita, to the City of Derby, and to south and southeastern Sedgwick County.

#### Fund(s): County General Fund 110 / Emergency Medical Services 203

Expenditures	2019 Actual	2020 Actual	2021 Adopted	2021 Revised	2022 Budget	Amnt. Chg. '21 - '22	% Chg. '21 - '22
Personnel	611,917	494,929	615,428	615,428	637,241	21,813	3.5%
Contractual Services	-	-	-	-	-	-	0.0%
Debt Service	-	-	-	-	-	-	0.0%
Commodities	-	-	-	-	-	-	0.0%
Capital Improvements	-	-	-	-	-	-	0.0%
Capital Equipment	-	-	-	-	-	-	0.0%
Interfund Transfers	-	-	-	-	-	-	0.0%
<b>Total Expenditures</b>	<b>611,917</b>	<b>494,929</b>	<b>615,428</b>	<b>615,428</b>	<b>637,241</b>	<b>21,813</b>	<b>3.5%</b>
<b>Revenues</b>							
Taxes	-	-	-	-	-	-	0.0%
Intergovernmental	-	-	-	-	-	-	0.0%
Charges For Service	-	-	-	-	-	-	0.0%
All Other Revenue	-	6	-	-	-	-	0.0%
<b>Total Revenues</b>	<b>-</b>	<b>6</b>	<b>-</b>	<b>-</b>	<b>-</b>	<b>-</b>	<b>0.0%</b>
<b>Full-Time Equivalents (FTEs)</b>	<b>8.00</b>	<b>8.00</b>	<b>8.00</b>	<b>8.00</b>	<b>8.00</b>	<b>-</b>	<b>0.0%</b>

### • Post 17

EMS Post 17, located at 3610 South 263rd Street West, provides primary coverage to the far western portion of Sedgwick County, including the Cities of Garden Plain, Cheney, and Viola.

#### Fund(s): County General Fund 110 / Emergency Medical Services 203

Expenditures	2019 Actual	2020 Actual	2021 Adopted	2021 Revised	2022 Budget	Amnt. Chg. '21 - '22	% Chg. '21 - '22
Personnel	272,894	307,264	251,549	251,549	248,635	(2,914)	-1.2%
Contractual Services	-	-	-	-	-	-	0.0%
Debt Service	-	-	-	-	-	-	0.0%
Commodities	-	-	-	-	-	-	0.0%
Capital Improvements	-	-	-	-	-	-	0.0%
Capital Equipment	-	-	-	-	-	-	0.0%
Interfund Transfers	-	-	-	-	-	-	0.0%
<b>Total Expenditures</b>	<b>272,894</b>	<b>307,264</b>	<b>251,549</b>	<b>251,549</b>	<b>248,635</b>	<b>(2,914)</b>	<b>-1.2%</b>
<b>Revenues</b>							
Taxes	-	-	-	-	-	-	0.0%
Intergovernmental	-	-	-	-	-	-	0.0%
Charges For Service	-	-	-	-	-	-	0.0%
All Other Revenue	-	-	-	-	-	-	0.0%
<b>Total Revenues</b>	<b>-</b>	<b>-</b>	<b>-</b>	<b>-</b>	<b>-</b>	<b>-</b>	<b>0.0%</b>
<b>Full-Time Equivalents (FTEs)</b>	<b>4.00</b>	<b>4.00</b>	<b>4.00</b>	<b>4.00</b>	<b>4.00</b>	<b>-</b>	<b>0.0%</b>

### • Post 45

EMS Post 45, located at 616 East 5th Street, Valley Center, provides primary coverage to the City of Valley Center, and to the north aspect of Sedgwick County.

#### Fund(s): County General Fund 110 / Emergency Medical Services 203

Expenditures	2019 Actual	2020 Actual	2021 Adopted	2021 Revised	2022 Budget	Amnt. Chg. '21 - '22	% Chg. '21 - '22
Personnel	155,818	157,560	204,813	204,813	211,119	6,306	3.1%
Contractual Services	2,150	2,007	2,500	2,500	2,300	(200)	-8.0%
Debt Service	-	-	-	-	-	-	0.0%
Commodities	-	-	-	-	-	-	0.0%
Capital Improvements	-	-	-	-	-	-	0.0%
Capital Equipment	-	-	-	-	-	-	0.0%
Interfund Transfers	-	-	-	-	-	-	0.0%
<b>Total Expenditures</b>	<b>157,969</b>	<b>159,568</b>	<b>207,313</b>	<b>207,313</b>	<b>213,419</b>	<b>6,106</b>	<b>2.9%</b>
<b>Revenues</b>							
Taxes	-	-	-	-	-	-	0.0%
Intergovernmental	-	-	-	-	-	-	0.0%
Charges For Service	-	-	-	-	-	-	0.0%
All Other Revenue	-	-	-	-	-	-	0.0%
<b>Total Revenues</b>	<b>-</b>	<b>-</b>	<b>-</b>	<b>-</b>	<b>-</b>	<b>-</b>	<b>0.0%</b>
<b>Full-Time Equivalents (FTEs)</b>	<b>2.00</b>	<b>2.00</b>	<b>2.00</b>	<b>2.00</b>	<b>2.00</b>	<b>-</b>	<b>0.0%</b>



### • Operations

The Operations Program facilitates the medical supplies, medical equipment, and vehicles essential to support the functions of each EMS Post. This Program also supports the medical supplies and equipment used by several of the first responders within Sedgwick County, such as Sedgwick County Fire District 1 (SCFD 1) and the Wichita Fire Department.

#### Fund(s): County General Fund 110 / Emergency Medical Services 203

Expenditures	2019 Actual	2020 Actual	2021 Adopted	2021 Revised	2022 Budget	Amnt. Chg. '21 - '22	% Chg. '21 - '22
Personnel	2,204,450	2,284,687	2,518,303	2,470,726	3,200,202	729,476	29.5%
Contractual Services	2,502,374	2,701,233	2,075,377	2,074,406	1,990,560	(83,846)	-4.0%
Debt Service	-	-	-	-	-	-	0.0%
Commodities	1,247,551	1,323,109	1,373,948	1,367,942	1,480,681	112,739	8.2%
Capital Improvements	-	-	-	-	-	-	0.0%
Capital Equipment	222,263	584,279	-	971	-	(971)	-100.0%
Interfund Transfers	-	-	-	-	-	-	0.0%
<b>Total Expenditures</b>	<b>6,176,638</b>	<b>6,893,308</b>	<b>5,967,629</b>	<b>5,914,046</b>	<b>6,671,443</b>	<b>757,397</b>	<b>12.8%</b>
<b>Revenues</b>							
Taxes	-	-	-	-	-	-	0.0%
Intergovernmental	-	-	-	-	-	-	0.0%
Charges For Service	-	-	-	-	-	-	0.0%
All Other Revenue	2,367	1,234	2,460	2,460	-	(2,460)	-100.0%
<b>Total Revenues</b>	<b>2,367</b>	<b>1,234</b>	<b>2,460</b>	<b>2,460</b>	<b>-</b>	<b>(2,460)</b>	<b>-100.0%</b>
<b>Full-Time Equivalents (FTEs)</b>	<b>41.10</b>	<b>44.10</b>	<b>46.10</b>	<b>61.15</b>	<b>61.65</b>	<b>0.50</b>	<b>0.8%</b>

### • EMSS Support

Sedgwick County EMS has provided 2.0 full-time equivalent (FTE) EMS staff positions to the Emergency Medical Service System (EMSS). These positions assist with certain clinical tasks and help support the credentialing of EMS employees as well as the development of education programs.

#### Fund(s): County General Fund 110 / Emergency Medical Services 203

Expenditures	2019 Actual	2020 Actual	2021 Adopted	2021 Revised	2022 Budget	Amnt. Chg. '21 - '22	% Chg. '21 - '22
Personnel	251,778	264,686	263,855	263,855	275,652	11,797	4.5%
Contractual Services	-	-	-	-	-	-	0.0%
Debt Service	-	-	-	-	-	-	0.0%
Commodities	-	-	-	-	-	-	0.0%
Capital Improvements	-	-	-	-	-	-	0.0%
Capital Equipment	-	-	-	-	-	-	0.0%
Interfund Transfers	-	-	-	-	-	-	0.0%
<b>Total Expenditures</b>	<b>251,778</b>	<b>264,686</b>	<b>263,855</b>	<b>263,855</b>	<b>275,652</b>	<b>11,797</b>	<b>4.5%</b>
<b>Revenues</b>							
Taxes	-	-	-	-	-	-	0.0%
Intergovernmental	-	-	-	-	-	-	0.0%
Charges For Service	-	-	-	-	-	-	0.0%
All Other Revenue	-	-	-	-	-	-	0.0%
<b>Total Revenues</b>	<b>-</b>	<b>-</b>	<b>-</b>	<b>-</b>	<b>-</b>	<b>-</b>	<b>0.0%</b>
<b>Full-Time Equivalents (FTEs)</b>	<b>2.00</b>	<b>2.00</b>	<b>2.00</b>	<b>2.00</b>	<b>2.00</b>	<b>-</b>	<b>0.0%</b>

### • Technology Review Board

The Technology Review Board (TRB) was established in 2019 to centralize the process of managing Information Technology (IT) projects, positions for technology support, and hardware and software needs to ensure the needs of the County are being met while also supporting the County's strategic plan. Funding for 2020 was for approved TRB projects.

#### Fund(s): Emergency Medical Services 203

Expenditures	2019 Actual	2020 Actual	2021 Adopted	2021 Revised	2022 Budget	Amnt. Chg. '21 - '22	% Chg. '21 - '22
Personnel	-	-	-	-	-	-	0.0%
Contractual Services	-	-	-	-	-	-	0.0%
Debt Service	-	-	-	-	-	-	0.0%
Commodities	-	243,480	-	6,006	-	(6,006)	-100.0%
Capital Improvements	-	-	-	-	-	-	0.0%
Capital Equipment	-	-	-	-	-	-	0.0%
Interfund Transfers	-	-	-	-	-	-	0.0%
<b>Total Expenditures</b>	-	<b>243,480</b>	-	<b>6,006</b>	-	<b>(6,006)</b>	<b>-100.0%</b>
<b>Revenues</b>							
Taxes	-	-	-	-	-	-	0.0%
Intergovernmental	-	-	-	-	-	-	0.0%
Charges For Service	-	-	-	-	-	-	0.0%
All Other Revenue	-	-	-	-	-	-	0.0%
<b>Total Revenues</b>	-	-	-	-	-	-	<b>0.0%</b>
<b>Full-Time Equivalents (FTEs)</b>	-	-	-	-	-	-	<b>0.0%</b>

### • EMS Donations - Safety

EMS Donations - Safety accounts for donations from the public to purchase special equipment.

#### Fund(s): Ems - Grants 258

Expenditures	2019 Actual	2020 Actual	2021 Adopted	2021 Revised	2022 Budget	Amnt. Chg. '21 - '22	% Chg. '21 - '22
Personnel	-	-	-	-	-	-	0.0%
Contractual Services	-	-	-	-	-	-	0.0%
Debt Service	-	-	-	-	-	-	0.0%
Commodities	-	1,000	-	-	-	-	0.0%
Capital Improvements	-	-	-	-	-	-	0.0%
Capital Equipment	-	-	-	-	-	-	0.0%
Interfund Transfers	-	-	-	-	-	-	0.0%
<b>Total Expenditures</b>	-	<b>1,000</b>	-	-	-	-	<b>0.0%</b>
<b>Revenues</b>							
Taxes	-	-	-	-	-	-	0.0%
Intergovernmental	-	-	-	-	-	-	0.0%
Charges For Service	-	-	-	-	-	-	0.0%
All Other Revenue	180	1,000	184	184	-	(184)	-100.0%
<b>Total Revenues</b>	<b>180</b>	<b>1,000</b>	<b>184</b>	<b>184</b>	-	<b>(184)</b>	<b>-100.0%</b>
<b>Full-Time Equivalents (FTEs)</b>	-	-	-	-	-	-	<b>0.0%</b>

### • Clearwater EMS

Clearwater EMS, located at 319 W Ross Ave, Clearwater, provides primary coverage to the City of Clearwater, and to the southwestern aspect of Sedgwick County.

#### Fund(s): County General Fund 110

Expenditures	2019 Actual	2020 Actual	2021 Adopted	2021 Revised	2022 Budget	Amnt. Chg. '21 - '22	% Chg. '21 - '22
Personnel	-	26,741	-	-	-	-	0.0%
Contractual Services	-	-	-	-	-	-	0.0%
Debt Service	-	-	-	-	-	-	0.0%
Commodities	-	76,492	-	-	-	-	0.0%
Capital Improvements	-	-	-	-	-	-	0.0%
Capital Equipment	-	-	-	-	-	-	0.0%
Interfund Transfers	-	-	-	-	-	-	0.0%
<b>Total Expenditures</b>	-	<b>103,233</b>	-	-	-	-	<b>0.0%</b>
<b>Revenues</b>							
Taxes	-	-	-	-	-	-	0.0%
Intergovernmental	-	-	-	-	-	-	0.0%
Charges For Service	-	-	-	-	-	-	0.0%
All Other Revenue	-	-	-	-	-	-	0.0%
<b>Total Revenues</b>	-	-	-	-	-	-	<b>0.0%</b>
<b>Full-Time Equivalents (FTEs)</b>	-	-	-	-	-	-	<b>0.0%</b>

### • ICT-1

The Integrated Care Team (ICT-1) is a collaborative effort between governmental agencies from Sedgwick County and the City of Wichita to address mental crises in real-time as they occur in the community. The team consists of a Qualified Mental Health Professional, a law enforcement officer, and a paramedic supported by transportation and equipment from the Wichita Fire Department. This multi-discipline approach allows for collaborative assessment, appropriate intervention to improve outcomes, and alleviates unnecessary or inappropriate emergency department, crisis facility, or jail admissions.

#### Fund(s): County General Fund 110

Expenditures	2019 Actual	2020 Actual	2021 Adopted	2021 Revised	2022 Budget	Amnt. Chg. '21 - '22	% Chg. '21 - '22
Personnel	-	-	-	-	74,066	-	0.0%
Contractual Services	-	-	-	-	-	-	0.0%
Debt Service	-	-	-	-	-	-	0.0%
Commodities	-	-	-	-	-	-	0.0%
Capital Improvements	-	-	-	-	-	-	0.0%
Capital Equipment	-	-	-	-	-	-	0.0%
Interfund Transfers	-	-	-	-	-	-	0.0%
<b>Total Expenditures</b>	-	-	-	-	<b>74,066</b>	-	<b>0.0%</b>
<b>Revenues</b>							
Taxes	-	-	-	-	-	-	0.0%
Intergovernmental	-	-	-	-	-	-	0.0%
Charges For Service	-	-	-	-	-	-	0.0%
All Other Revenue	-	-	-	-	-	-	0.0%
<b>Total Revenues</b>	-	-	-	-	-	-	<b>0.0%</b>
<b>Full-Time Equivalents (FTEs)</b>	-	-	-	-	<b>1.00</b>	<b>1.00</b>	<b>0.0%</b>