

ADDENDUM NO. 1

Sedgwick County Project: 598-30-1456; Bridge on 85th Street North between Oliver Ave. and Woodlawn Blvd. (B506)

The items contained herein now become a part of the referenced plans and specifications. Please read the following items and acknowledge receipt of this addendum on the Proposal Page Number P-1. NOTE: THIS ADDENDUM MUST BE ACKNOWLEDGED TO CONSTITUTE A VALID BID.

SPECS:

- Replace SOP-1 to 2 with SOP-1R to 2R (Change Methyl Methacrylate to Agglomerate Methyl Methacrylate)

PLANS:

- Replace sheet 7 with sheet 7R (Added Armor Angle detail and notes)
- Replace sheet 44 with sheet 44R (Changed Pavement Marking bid items to “Agglomerate Methyl Methacrylate”)
- Replace sheet 45 with sheet 45R (Changed Summary table to include “Agglomerate Methyl Methacrylate”)

By: **James Weber**
James Weber, P.E.
Director of Public Works/County Engineer

Digitally signed by James Weber
DN: cn=James Weber, o, ou,
email=Jim.Weber@sedgwick.gov, c=US
Date: 2022.02.22 15:30:24 -06'00'

Date: February 22, 2022

SCHEDULE OF PRICES

PROJECT:598-30-1456; Bridge on 85th Street North between Oliver Ave. and Woodlawn Blvd. (B506)

TYPE OF WORK: R.C.S.H. Bridge, Asphalt Surfacing, Grading, Pavement Marking, Seeding, Guardrail

Bidding Item	Approx. Quantity	Unit	Unit Price	Amount
Removal of Existing Structure	1	LSUM		
Mobilization	1	LSUM		
Field Office and Laboratory (Type C)	1	LSUM		
Contractor Construction Staking	1	LSUM		
Common Excavation	493	C.Y.		
Common Excavation (Contractor Furnished)	406	C.Y.		
Rock Excavation	174	C.Y.		
Compaction of Earthwork (Type B)(MR 90)	719	C.Y.		
Water (Grading)(Set Price)	1	MGAL	\$ 35.00	
Concrete Pavement (12" Uniform)(AE)(BR App)	96	S.Y.		
Plant Mix Asphalt Construction - Commercial Grade (6")	334	Ton		
Aggregate Base (Special)(6")	1,002	S.Y.		
Guardrail, Steel Plate (MGS)	263	L.F.		
Guardrail End Terminal (MGS-SRT)	3	EA		
Entrance Pipe (18")(RCP)	42	L.F.		
End Section (RC)	2	EA		
Adjustment of Meter Box (Water)	1	EA		
Adjustment of Valve Box (Water)	1	EA		
Class I Excavation	114	C.Y.		
Class II Excavation	58	C.Y.		
Concrete (Grade 4.0)(AE)	290	C.Y.		
Reinforcing Steel (Gr. 60)	65,985	LBS		
Bridge Deck Grooving	342	S.Y.		
Piles (Steel) HP 12x53	960	L.F.		
Cast Steel Pile Points	24	EA		
Contractor Furnished PDA	4.0	EA		
Bridge Backwall Protection System	44	S.Y.		
Abutment Strip Drain	38	S.Y.		
Slope Protection (Shot Rock)	542	C.Y.		
Geotextile Fabric	1,084	S.Y.		
Mulch Tack Slurry	540	LBS		
Temporary Seeding	1	LSUM		
Sediment Removal (Set Price)	1	C.Y.	\$ 35.00	
Temporary Berm (Set Price)	1	L.F.	\$ 1.00	
Biodegradable Log (20")	86	L.F.		
Silt Fence	490	L.F.		

SCHEDULE OF PRICES

PROJECT:598-30-1456; Bridge on 85th Street North between Oliver Ave. and Woodlawn Blvd. (B506)

TYPE OF WORK: R.C.S.H. Bridge, Asphalt Surfacing, Grading, Pavement Marking, Seeding, Guardrail

Bidding Item	Approx. Quantity	Unit	Unit Price	Amount
Water (Erosion Control)(Set Price)	1	MGAL	\$ 35.00	
Seeding	1	LSUM		
Pavement Marking (Agglomerate Methyl Methacrylate)(White)(4")	816	L.F.		
Pavement Marking (Agglomerate Methyl Methacrylate)(Yellow)(4")	385	L.F.		
Traffic Control	1	LSUM		
Object Marker (OM-3)	4	EA		
GRAND TOTAL				

In Words:

DOLLARS

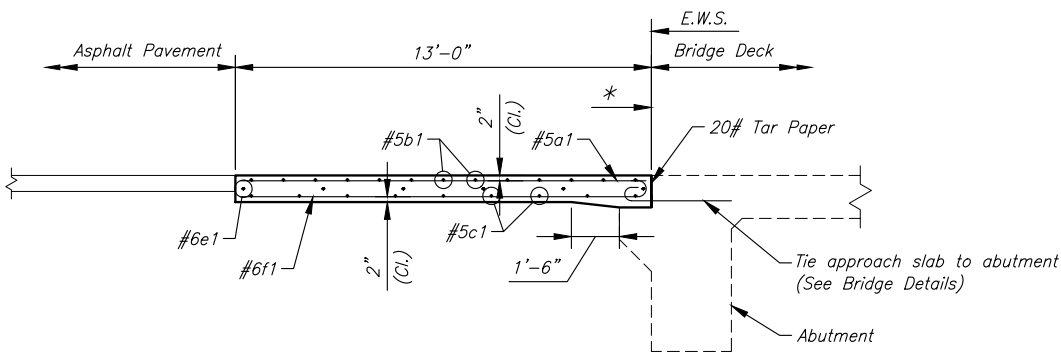
Company or Firm Name

BY

TITLE

J:\PROJECTS\2019\1901040830_SEDGWICK COUNTY_BRIDGE B506_190830 CAD\GTS\05 CIVIL\PAV\190830-05-5152.DWG

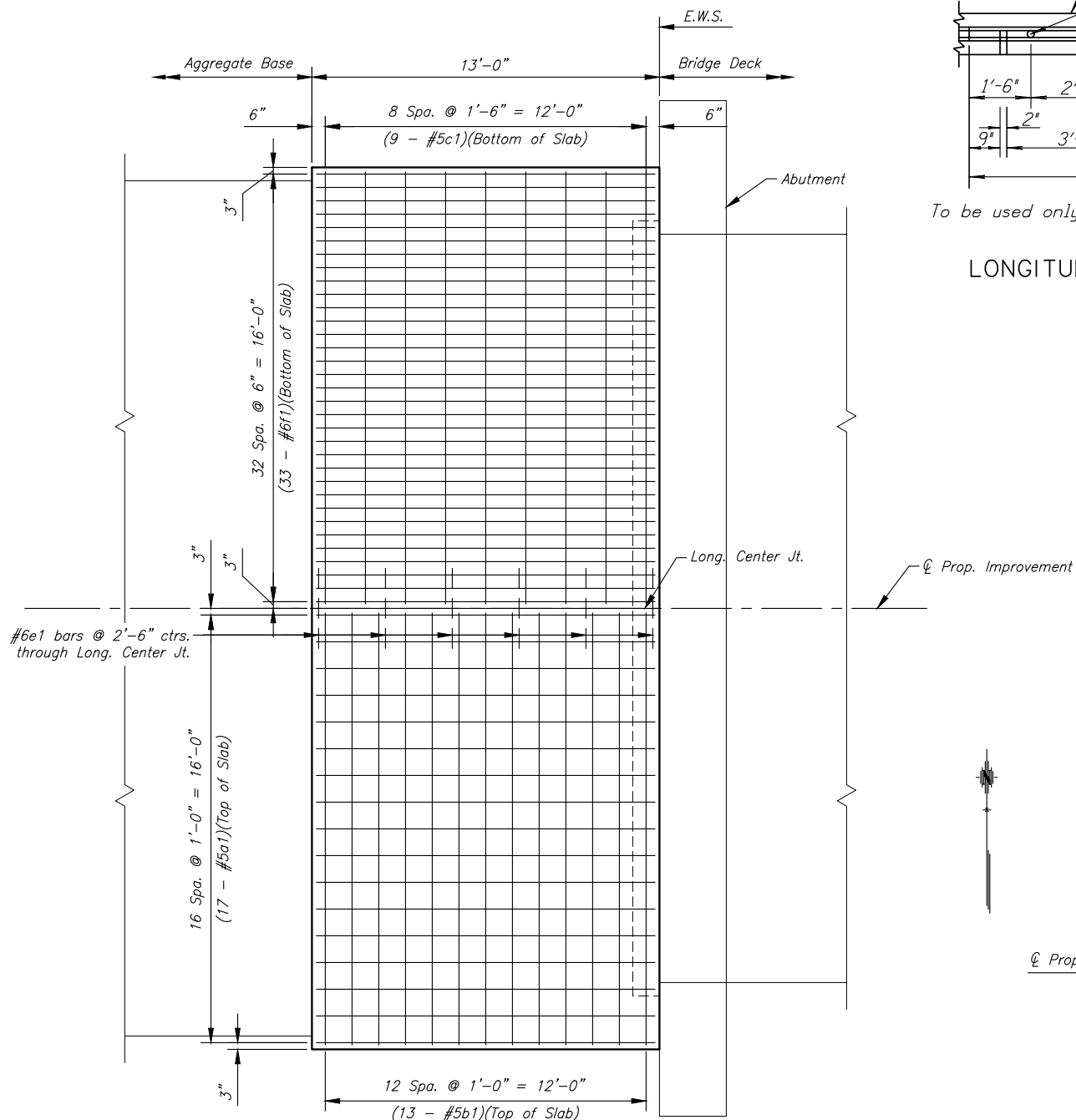
J:\PROJECTS\2019\1901040830_SEDGWICK COUNTY_BRIDGE B506_190830 CAD\GTS\05 CIVIL\PAV\190830-05-5152.DWG



LONGITUDINAL SECTION ON CENTER LINE

(East Approach Slab Similar)

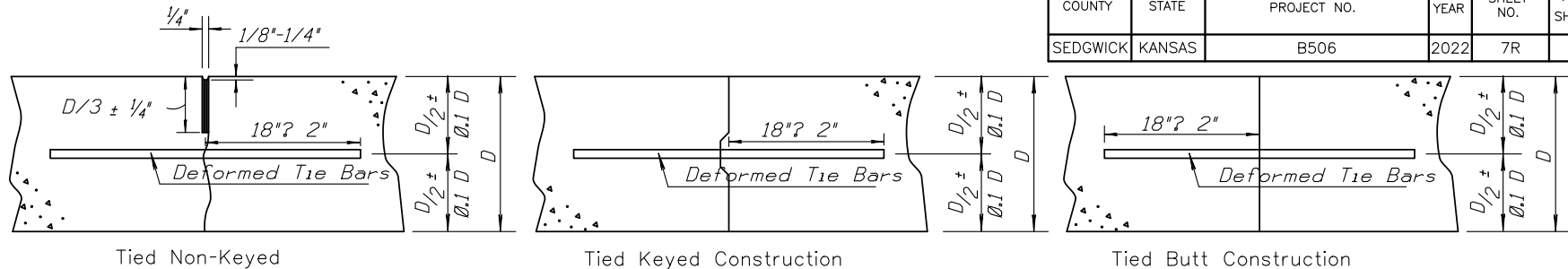
1 * See "Armor Angle Details" this sheet



WEST APPROACH SLAB

(Symm. about C Prop. Improvement & Bridge Mid-Span)

(East Approach Slab Similar)

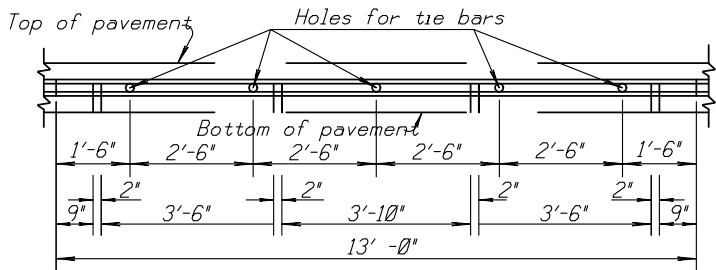


LONGITUDINAL JOINTS

Note: For longitudinal construction joints the contractor has the option of using either the keyed or butt type. Place deformed tie bars mid-depth of the shoulder.

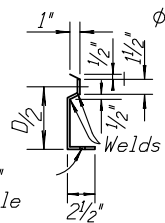
APPROACH SLAB NOTES

- All work shall be done in conformity with the Standard Specifications applicable to the project.
- The cost of all bars and joint material shown on this sheet is to be included in the bid price for Concrete Pavement.
- At each planned transverse joint location, a 4 to 6 inch wide strip of the pavement surface shall be protected from the texturing operation to provide a transverse textureless surface centered over the joint sawcut.
- All sawed joints on this project shall be filled with sealant in accordance with Standard Specifications.
- All materials and work required for this construction shall be Subsidiary to the concrete approach slab.
- Tie bars shall be evenly spaced along the length of the slab and no tie bars shall be within 12" of contraction joint.
- Concrete Bridge Approach shall be paid for as Sq. Yds. of "Concrete Pavement (12" Uniform)(AE)(Br App)" and includes all work and materials required to construct the approach slab as shown on this sheet, including reinforcing steel.
- Clearance from the face of concrete for all reinforcing steel shall be 2 inches.
- Reinforcing Steel ASTM A615, Grade 60.



To be used only against forms. Shall not extend through contraction joints.

METAL STRIP FOR LONGITUDINAL CONSTRUCTION JOINT (13'-0")



SECTION OF RECESSED FORM LEG

Φ Snap-in leg or other approved designs may be used in lieu of welded leg.

FOR INFORMATION ONLY

WEST APPROACH SLAB POINTS		
Location	Elevation	
49+30.75, 16.5' Lt.	1384.21	
49+30.75, 0.0' Lt.	1384.54	
49+30.75, 16.5' Rt.	1384.21	
49+43.75, 16.5' Lt.	1384.21	
49+43.75, 0.0' Lt.	1384.47	
49+43.75, 16.5' Rt.	1384.21	

FOR INFORMATION ONLY

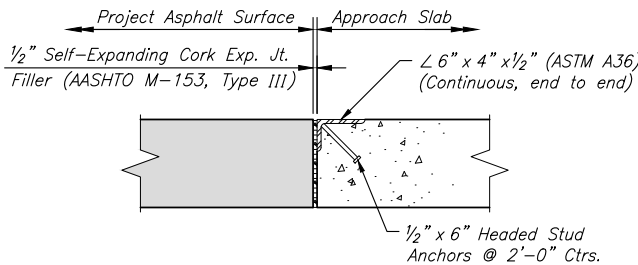
SUMMARY OF QUANTITIES		
(Both Approach Slabs)		
Concrete Pavement (Grade 4.0)	95.3 S.Y.	
Reinforcing Steel (Gr. 60)	5,170 Lbs.	

FOR INFORMATION ONLY

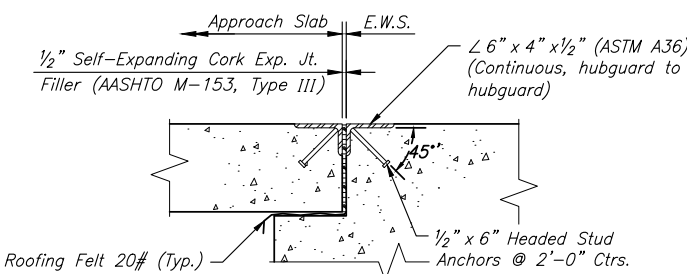
EAST APPROACH SLAB POINTS		
LOCATION	Elevation	
50+46.25, 16.5' Lt.	1384.21	
50+46.25, 0.0' Lt.	1384.47	
50+46.25, 16.5' Rt.	1384.21	
50+59.25, 16.5' Lt.	1384.19	
50+59.25, 0.0' Lt.	1384.52	
50+59.25, 16.5' Rt.	1384.19	

FOR INFORMATION ONLY

BILL OF REINFORCING STEEL							
(Grade 60)(Both Approach Slabs)							
Straight Bars				Bent Bars			
Mark	Size	No.	Length	Mark	Size	No.	Length
a1	#5	68	12'-8"	b1	#5	52	17'-6"
c1	#5	36	16'-2"	f1	#6	132	13'-5"
e1	#6	12	3'-0"				



ARMOR ANGLE DETAIL AT END OF APPROACH PAVEMENT



ARMOR ANGLE DETAIL AT BRIDGE E.W.S.

ARMOR ANGLE NOTES

- L 6" x 4" x 1/2" shall be galvanized after fabrication in compliance with the requirements of ASTM A153.
- Furnishing and installation of Armor Angles and expansion joint at the End of Approach Pavement and Bridge E.W.S. locations will not be paid for directly but shall be considered subsidiary to the bid item "Concrete Pavement (12" Uniform)(AE)(Br App)".

1 Revised 02/22/2022

SEDGWICK COUNTY PUBLIC WORKS			
STRUCTURE NO. 598-30-1456		STA. 49+95.00	
APPROACH SLAB DETAILS			
PROJ. NO. B506		SEDGWICK CO.	
M K E C ENGINEERING, INC.			
WICHITA, KANSAS			
DESIGNED BY:	JRA	CHECKED BY:	JRA
DRAWN BY:	RAM	DATE: 2/21/22	SHEET 7R OF 56

Sh. No. 7R

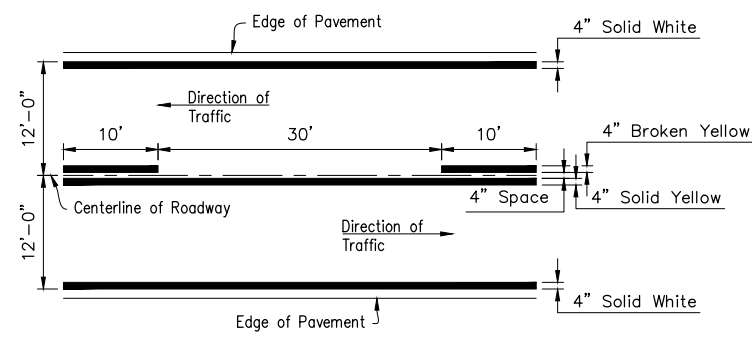


Diagram illustrating the lane markings and dimensions for a 24-foot wide roadway (12 feet on each side of the centerline).

- Top Edge:** Edge of Pavement (12'-0" from centerline).
- Top Lane Marking:** 4" Solid White line.
- Top Lane Width:** 10' (from edge of pavement to centerline).
- Centerline:** 4" Broken Yellow line (12'-0" from centerline).
- Bottom Lane Width:** 10' (from centerline to edge of pavement).
- Bottom Lane Marking:** 4" Solid White line.
- Bottom Edge:** Edge of Pavement (12'-0" from centerline).
- Direction of Traffic:** Indicated by arrows pointing left and right.

Diagram illustrating a centerline shift on a two-lane road. The diagram shows two cross-sections of the road, separated by a diagonal line indicating the centerline shift.

Top Section (Standard Configuration):

- Edge of Paved Shoulder (Left)
- Direction of Traffic (Left)
- Centerline of Roadway (Broken Yellow Line)
- Direction of Traffic (Right)
- Edge of Paved Shoulder (Right)
- Dimensions: 6'-0" (Left Lane), 6'-0" (Centerline Shift), 6'-0" (Right Lane)
- Line Types: 4" Solid White (Edge), 4" Broken Yellow (Centerline), 4" Solid White (Edge)

Bottom Section (Shifted Configuration):

- Edge of Paved Shoulder (Left)
- Direction of Traffic (Left)
- Centerline of Roadway (Broken Yellow Line)
- Direction of Traffic (Right)
- Edge of Paved Shoulder (Right)
- Dimensions: 6'-0" (Left Lane), 6'-0" (Centerline Shift), 6'-0" (Right Lane)
- Line Types: 4" Solid White (Edge), 4" Broken Yellow (Centerline), 4" Solid White (Edge)

[illegible]

SUMMARY OF QUANTITIES		
ITEM	QUANTITY	UNITS
Marking (Agglomerate Methyl Methacrylate)(White)(4")	816	Lin. Ft.
Marking (Agglomerate Methyl Methacrylate)(Yellow)(4")	385	Lin. Ft.

The diagram illustrates a two-lane road cross-section with a total width of 12'-0". The road is divided into two lanes, each 12'-0" wide. The left lane is labeled "Direction of Traffic" with an arrow pointing left. The right lane is labeled "Direction of Traffic" with an arrow pointing right. The centerline of the roadway is marked with a double yellow line, consisting of two 4" solid yellow lines separated by a 4" space. The edges of the pavement are marked with 4" solid white lines. The diagram is crossed out with a large 'X'.

CHART "A"	
Approach Speed	X
20 mph	20'
25 mph	25'
30 mph	30'
35 mph	35'
40 mph	40'
45 mph	45'
50 mph	50'
55 mph	55'
60 mph	60'
65 mph	65'
70 mph	70'

Approach Speed	L
20 mph	80'
25 mph	125'
30 mph	180'
35 mph	245'
40 mph	320'
45 mph	540'
50 mph	600'
55 mph	660'
60 mph	720'
65 mph	780'
70 mph	840'

4" Double Yellow Line

12" Yellow Diagonal Line

30°

X (From chart A)

L (From chart B)

25' Minimum

6" SOLID WHITE LANE LINE

24" WHITE STOP LINE


TYPICAL
APPROACH TAPER DETAIL

TYPICAL
APPROACH TAPER DETAIL

3/7/18	Added shoulder Bike Lane Detail	NN /MRB
4/30/09	Added Left Turn Taper Detail	JRW /MRB
2/16/06	Revised Bill of Materials/Removed SI Option	DRS /MRB
Rev.Date	Description	By /Chk

PM 1-0

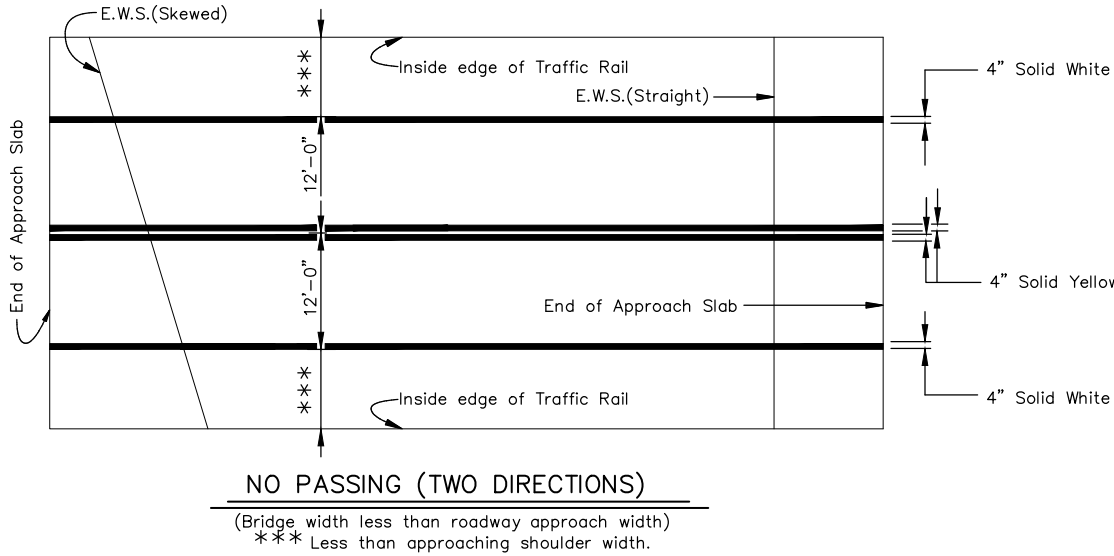
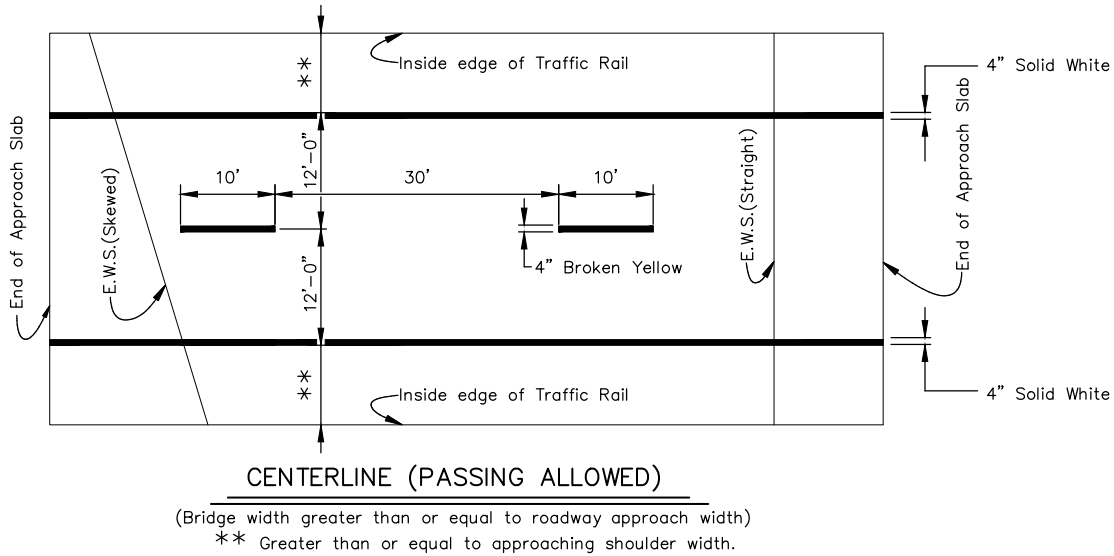
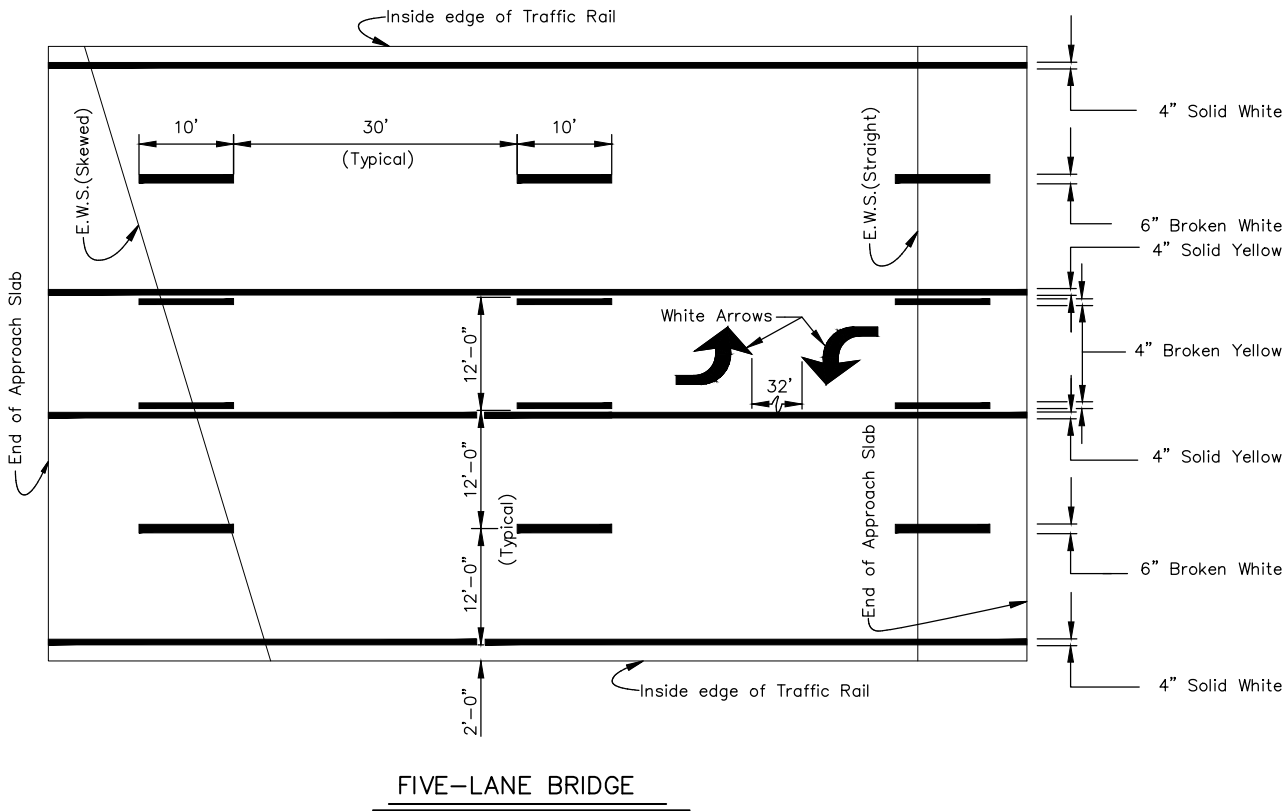
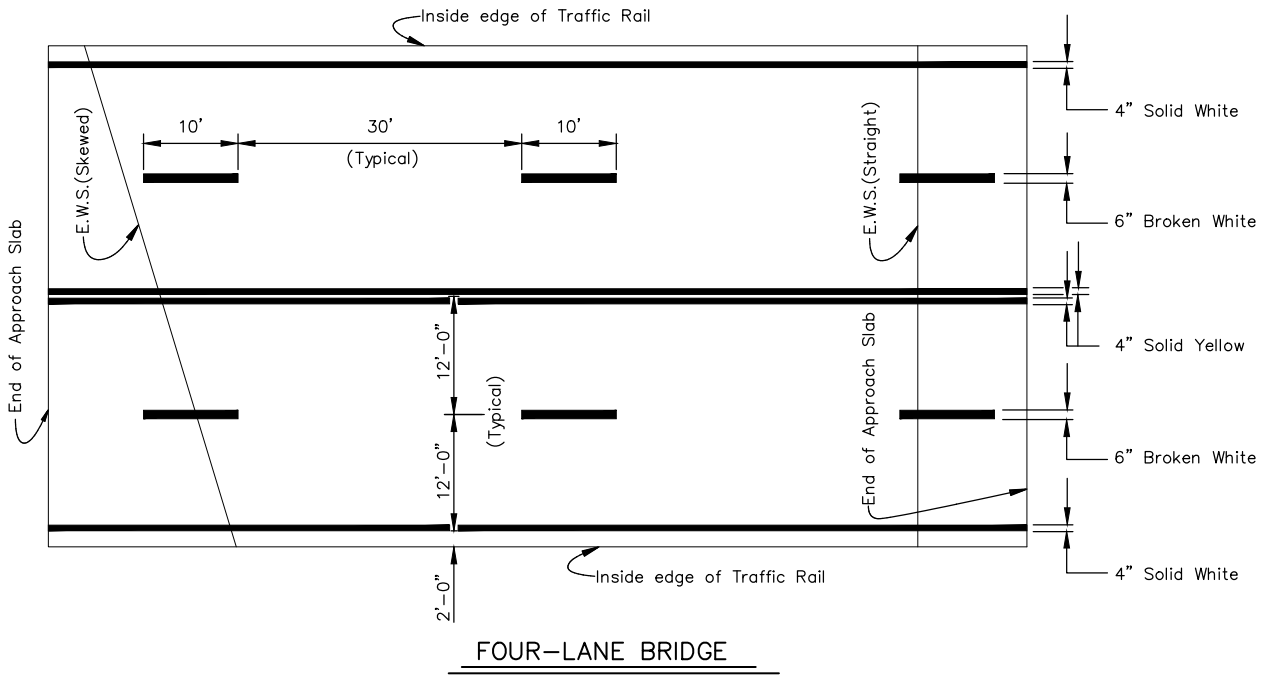
DIRECTOR/COUNTY ENGINEER

	SCALE	DESIGNED	DRAWN	CHECKED	SHEET NO. 44R
	NONE	M.R.B.	D.R.S.	M.R.B.	
	DATE	4/2005	4/2005	4/2005	
<p>dwg: 190830-05-5605.dwg</p>					

44R

Device: DWG To PDF.pc3 Page Setup: -----
J: \Projects\2019\1901040830_Sedgwick County Bridge B506\190830_CAD\SHTS\05 Civil\Traffic\190830-05-5607.dwg Plotted: 2/22/2022 11:23 AM By: Ryan Myers

COUNTY	STATE	PROJECT NUMBER	FISCAL YEAR	SHEET NO.	TOTAL SHEETS
SEDGWICK	KANSAS	B506	2022	45R	56




NOTES:

1 See Special Provision "Pavement Marking - Agglomerate Methyl Methacrylate".

If approaching roadway configuration includes Curb & Gutter without 4" White Edgeline then the 4" White Edgeline may be eliminated on the Bridge, as directed by the Engineer.

1 Revised 02/22/2022

PAVEMENT MARKING PLAN CONCRETE BRIDGE DECKS					
STRUCTURE NO. 598-30-1456 (B506)				STA. 49+95	
PREPARED BY SEDGWICK COUNTY PUBLIC WORKS HIGHWAY DEPARTMENT					
JAMES WEBER, P.E.			DIRECTOR/COUNTY ENGINEER		
	SCALE	DESIGNED	DRAWN	CHECKED	SHEET NO. 45R
	None	M.R.B.	D.R.S.	M.R.B.	
	DATE	1/2005	1/2005	1/2005	
	DWG:				