

SEDGWICK COUNTY REGIONAL FORENSIC SCIENCE CENTER
Wichita, Kansas

**ADVISORY BOARD QUARTERLY
REPORT
February 17, 2021**

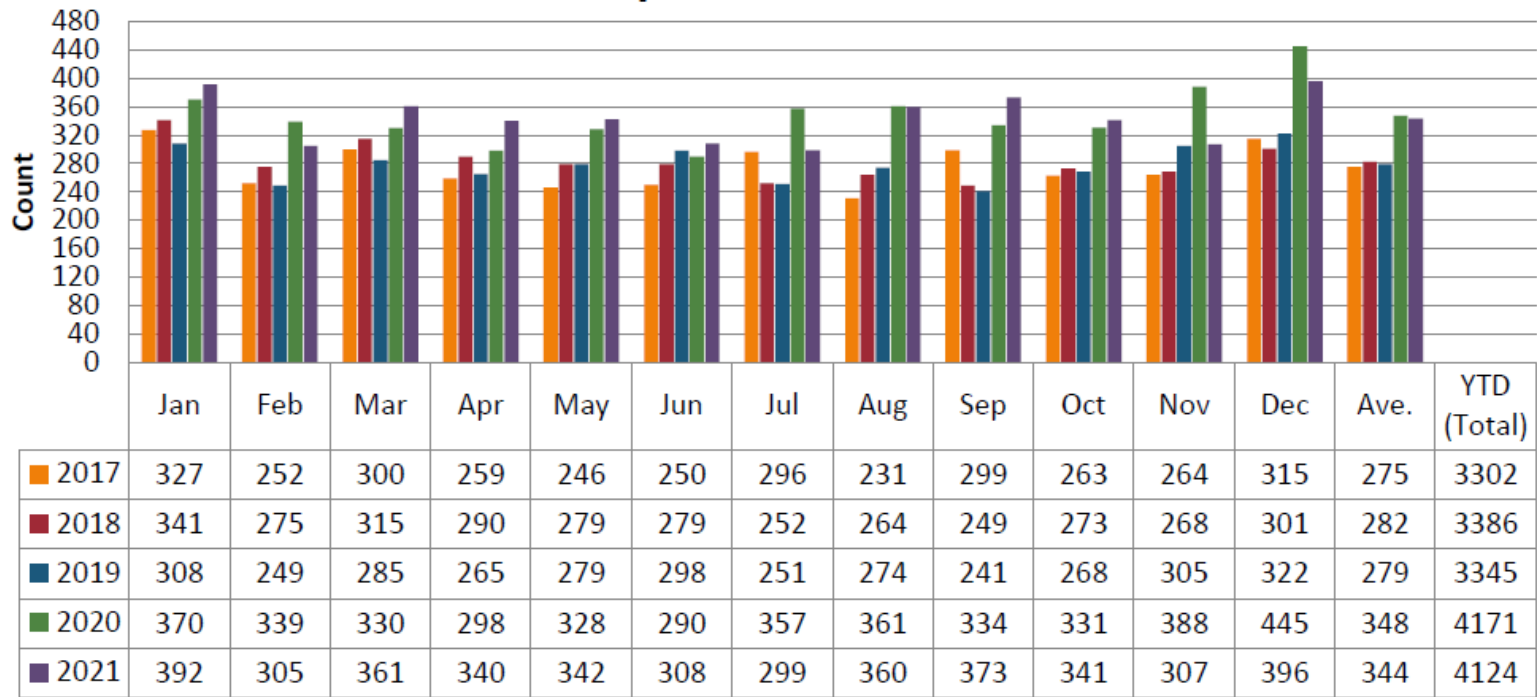
Forensic Science Center



Mission: The Forensic Science Center strives to provide the highest quality medicolegal and advanced forensic laboratory services to Sedgwick County. Death Investigation and Forensic Autopsy services are conducted in a compassionate and objective manner to achieve accurate certification of cause and manner of death. The Forensic Laboratory services provide unbiased and accurate analytical testing to support the resolution of criminal cases. As an independent agency operating under the Division of Public Safety, the Forensic Science Center collaborates with public health and criminal justice stakeholders to reduce crime and prevent deaths.

Medical Investigations

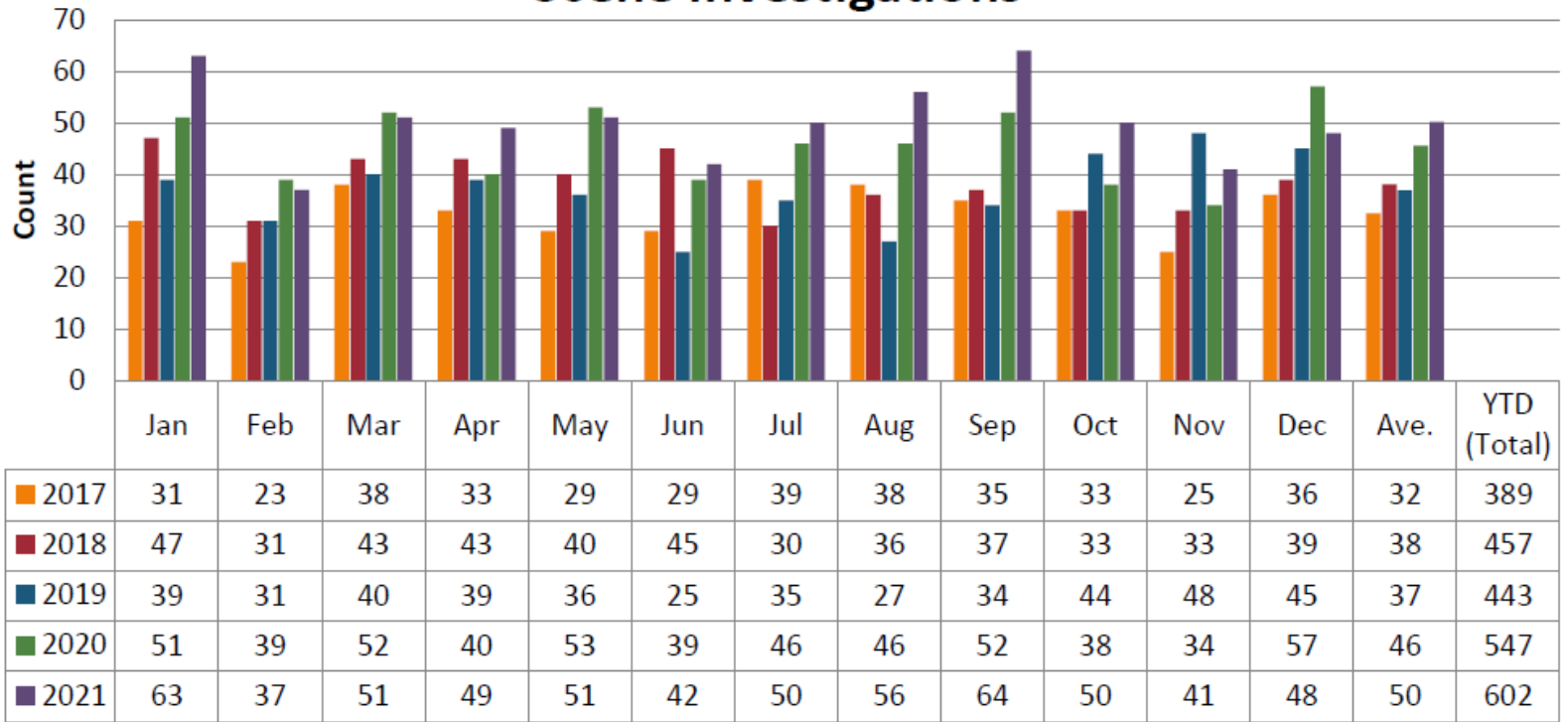
Reported Deaths



2019-2021 = 23.3% increase

Medical Investigations

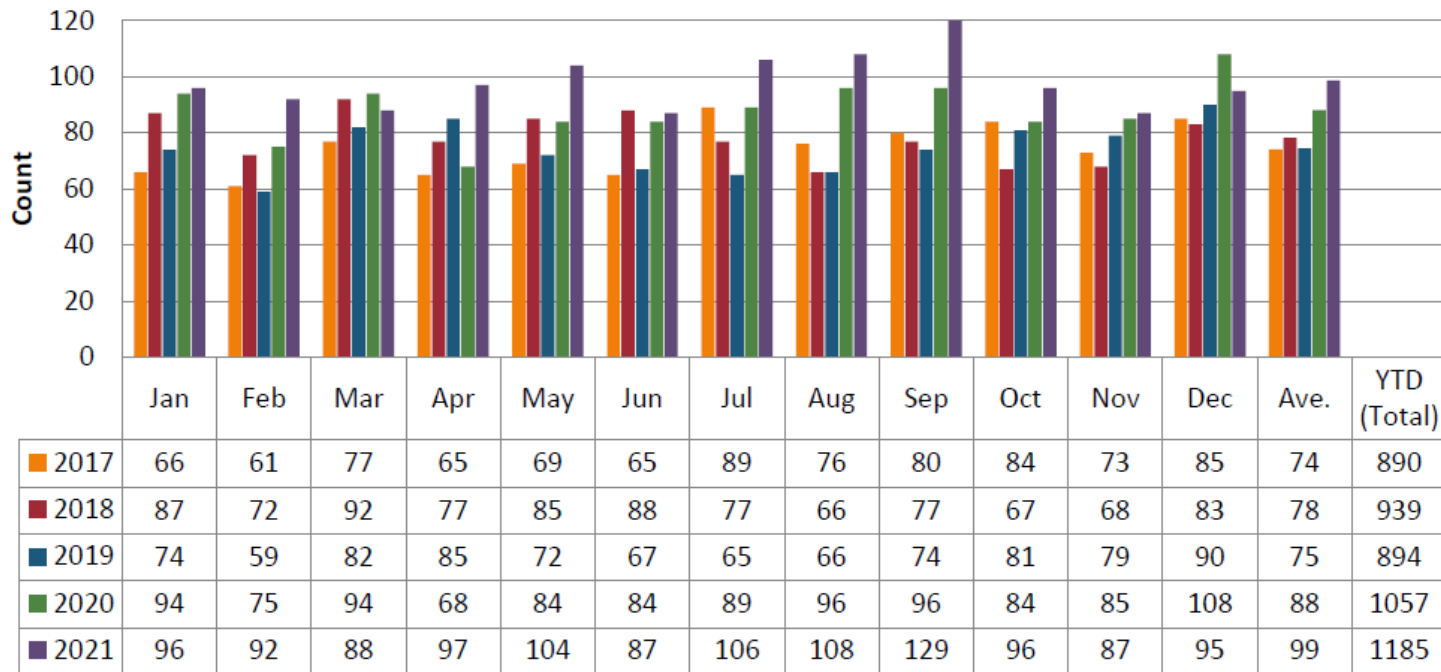
Scene Investigations



2019-2021 = 35.9% increase

Pathology

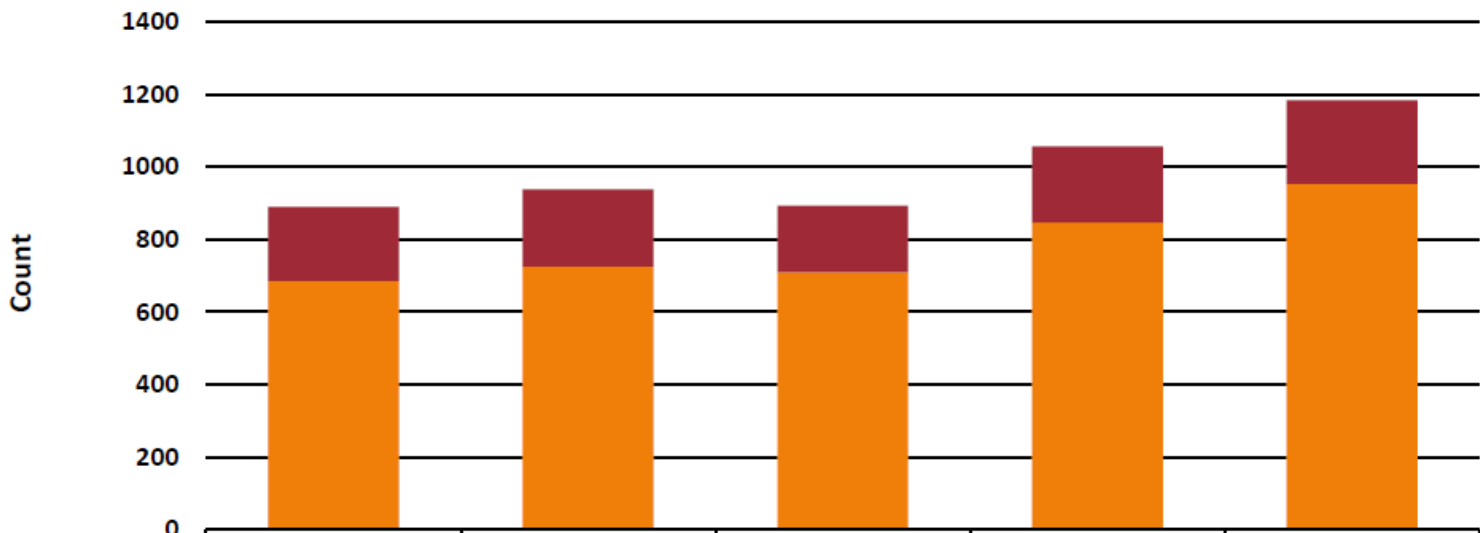
Autopsy Cases Received by Death Reported Year



2019-2021 = 32.6% increase

Pathology

Autopsy Cases Sedgwick County vs. Out of County



	2017	2018	2019	2020	2021
Out of County	204	214	184	210	230
Sedgwick County	686	725	710	847	954

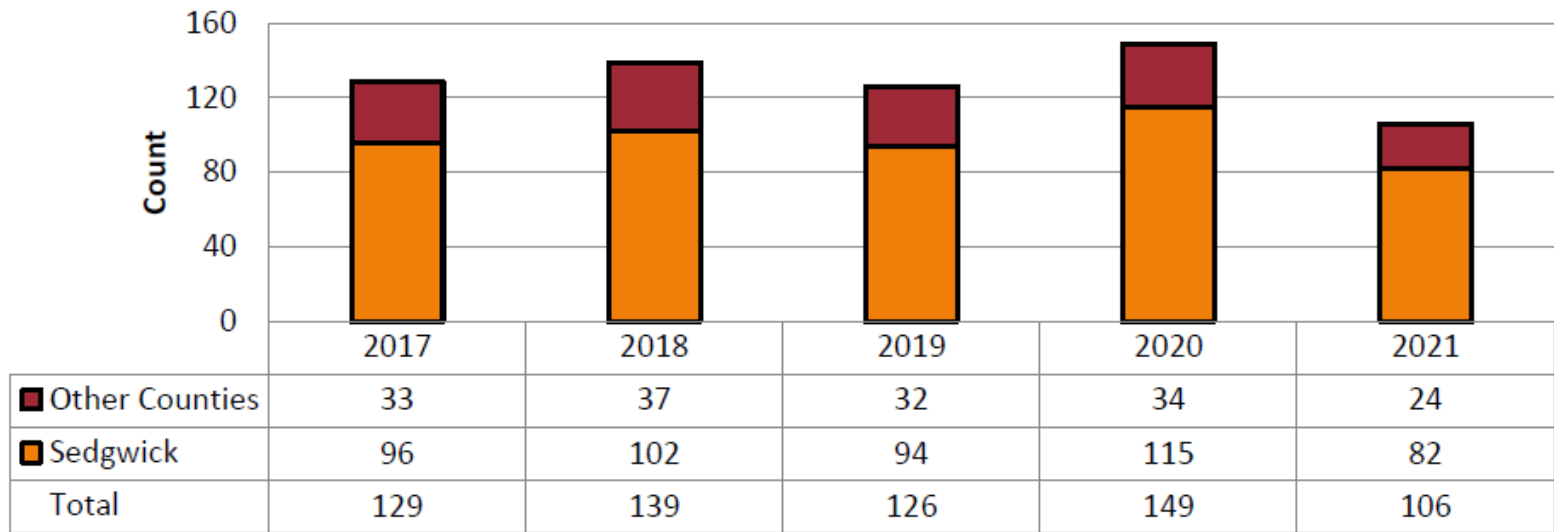
Percent out of county:

2020: 19.9%

2021: 19.4%

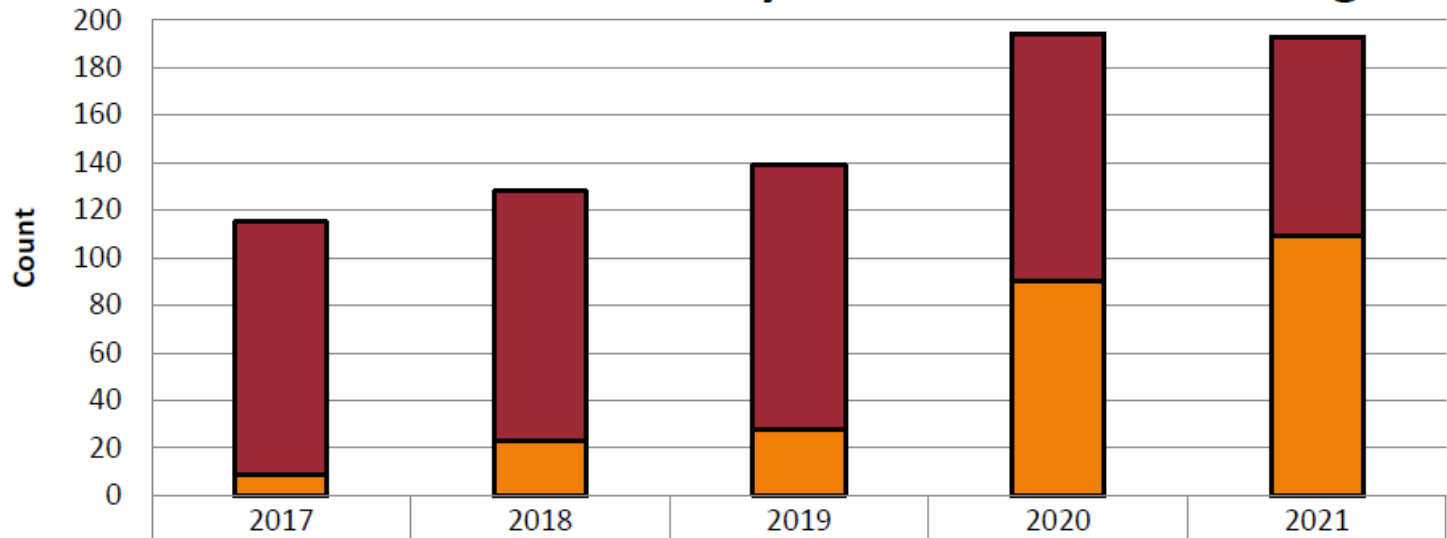
Pathology

Count of Suicides by Examination Year



Pathology

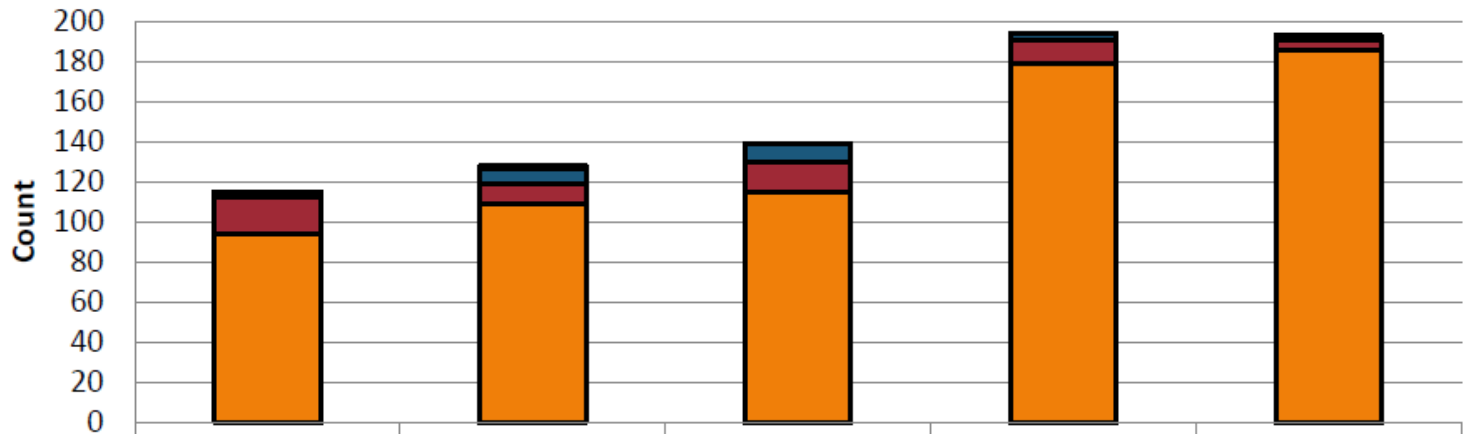
Overdose Count: Fentanyl Related vs. Other Drugs



■ Other Drugs	106	105	111	104	84
■ Fentanyl Related	9	23	28	90	109
Total	115	128	139	194	193

Pathology

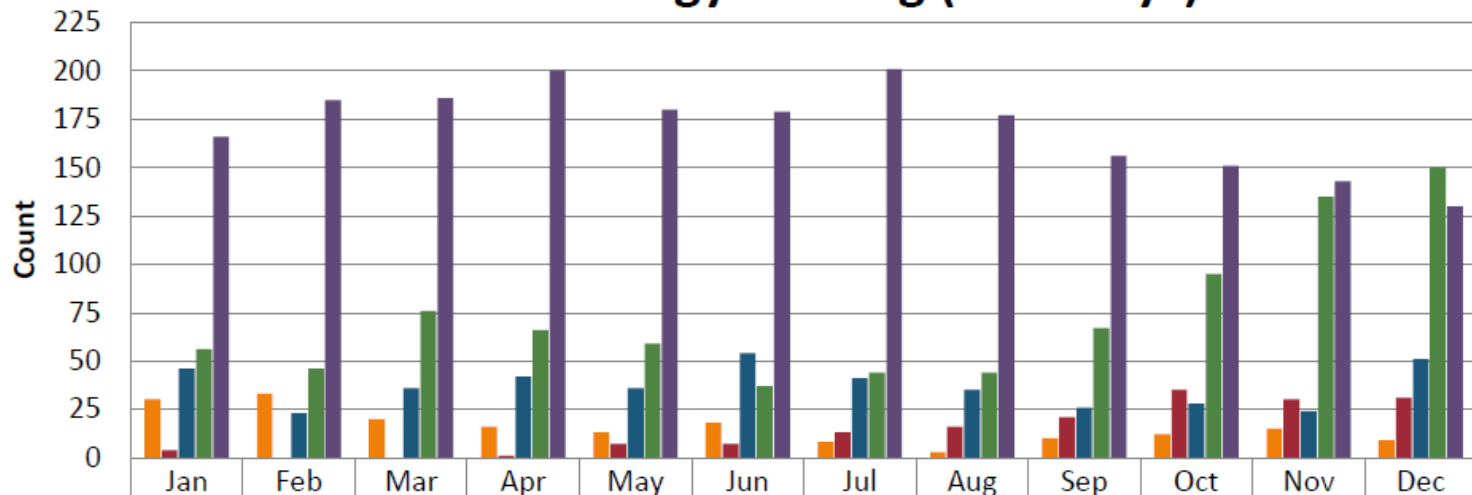
Overdose Count by Manner of Death by Death Year



	2017	2018	2019	2020	2021
Other	1	1	0	0	0
Underdetermined	2	8	9	3	2
Suicide	18	10	15	12	5
Accidental	94	109	115	179	186
Total	115	128	139	194	193

Toxicology

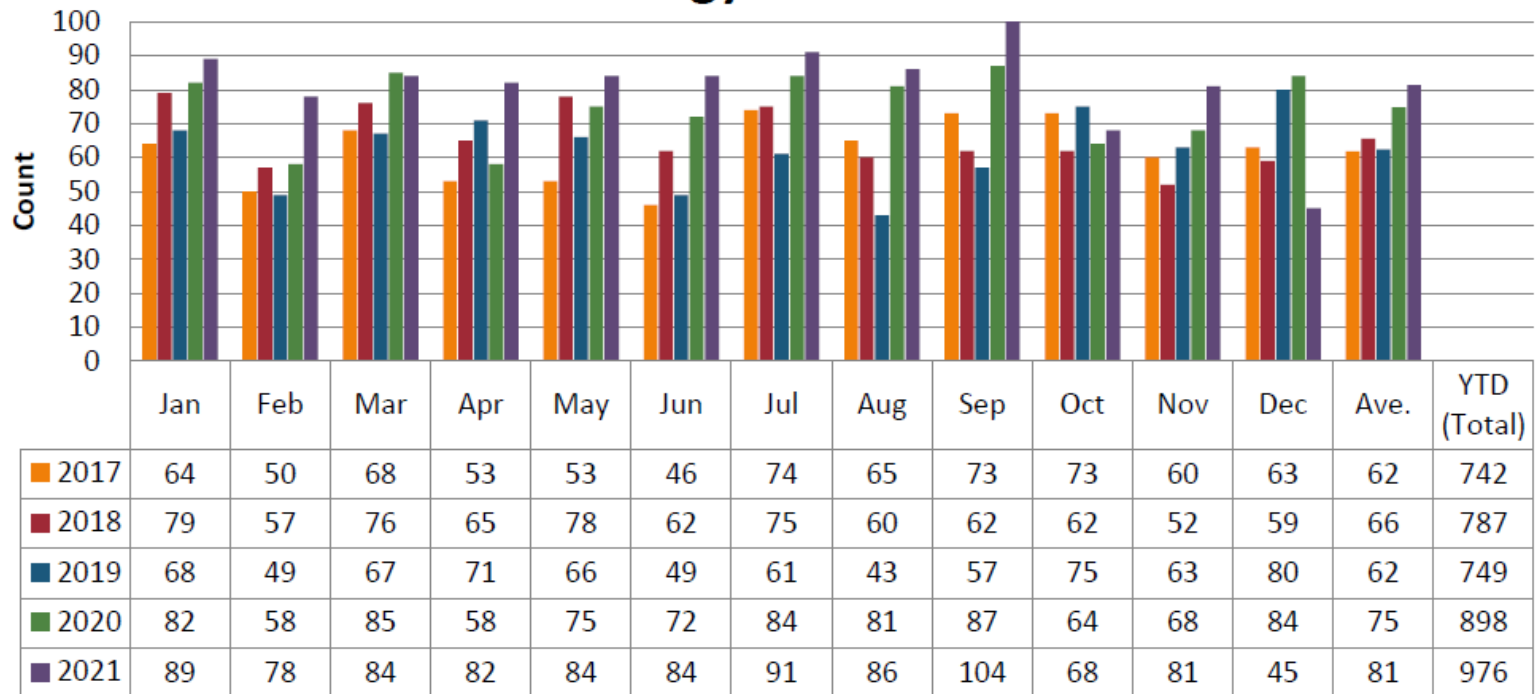
PM - Toxicology Backlog (> 60 Days)



PM ('17)	30	33	20	16	13	18	8	3	10	12	15	9
PM ('18)	4	0	0	1	7	7	13	16	21	35	30	31
PM ('19)	46	23	36	42	36	54	41	35	26	28	24	51
PM ('20)	56	46	76	66	59	37	44	44	67	95	135	150
PM ('21)	166	185	186	200	180	179	201	177	156	151	143	130

Toxicology

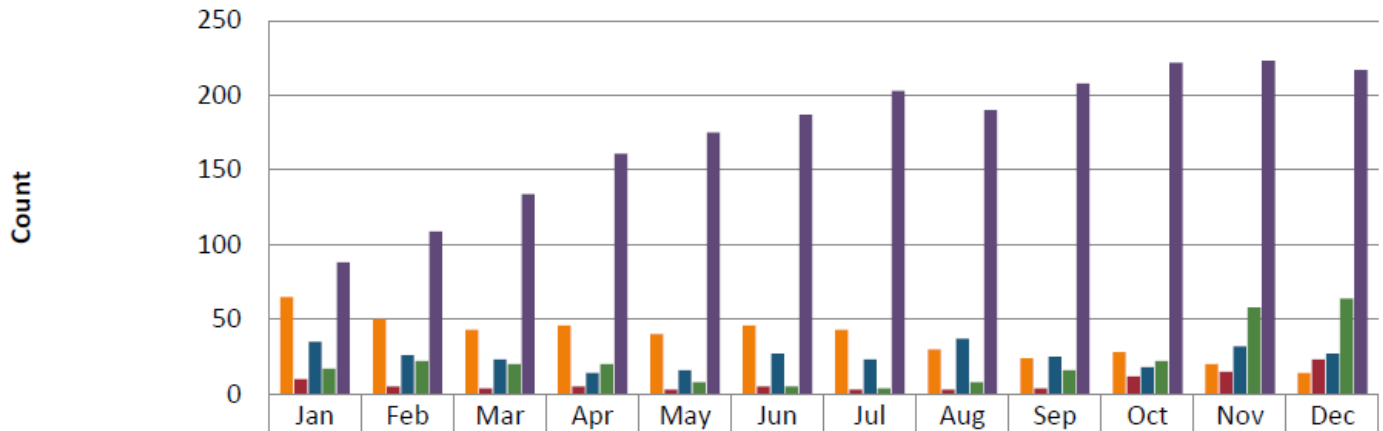
PM Toxicology Cases Submitted



2019-2021 = 30.3% increase

Toxicology

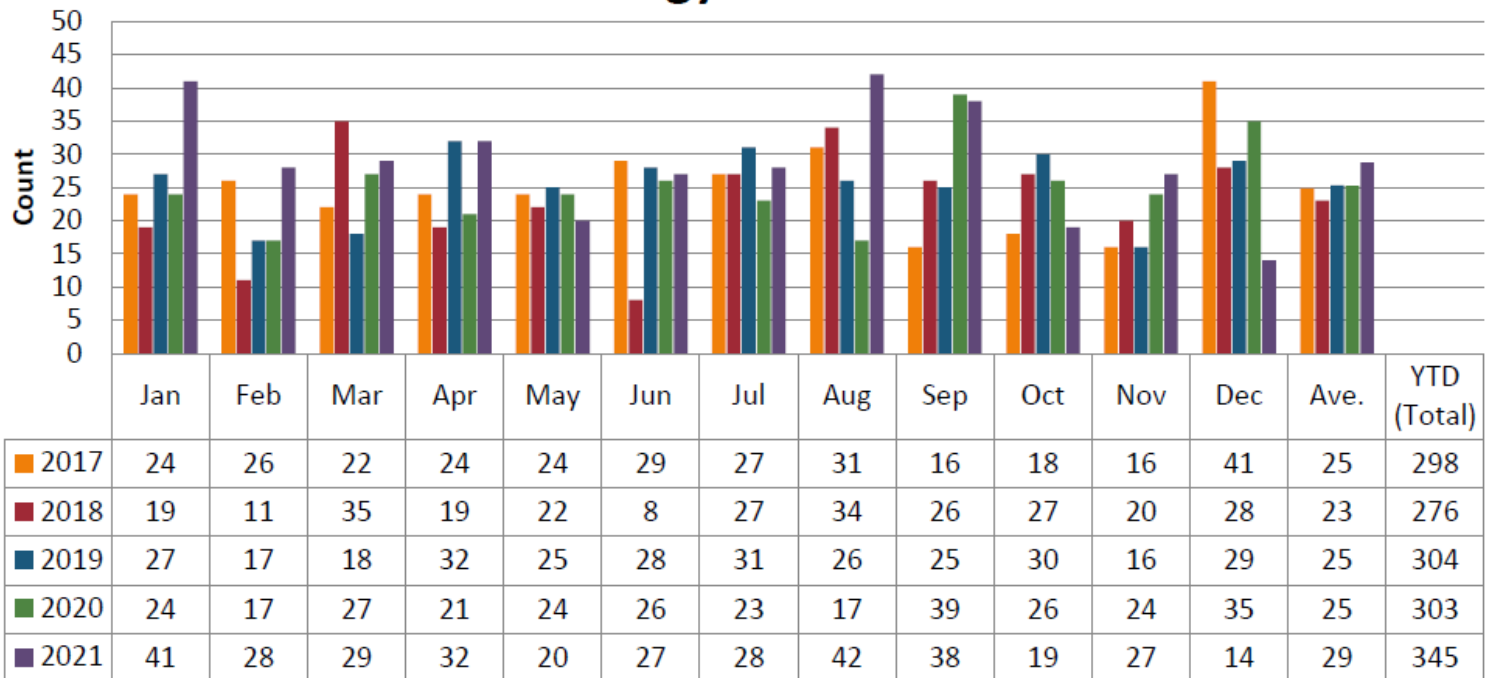
HPT Toxicology Backlog (> 60 Days)



	Jan	Feb	Mar	Apr	May	Jun	Jul	Aug	Sep	Oct	Nov	Dec
DUI/DUID/Misc ('17)	65	50	43	46	40	46	43	30	24	28	20	14
DUI/DUID/Misc ('18)	10	5	4	5	3	5	3	3	4	12	15	23
DUI/DUID/Misc ('19)	35	26	23	14	16	27	23	37	25	18	32	27
DUI/DUID/Misc ('20)	17	22	20	20	8	5	4	8	16	22	58	64
DUI/DUID/Misc ('21)	88	109	134	161	175	187	203	190	208	222	223	217

Toxicology

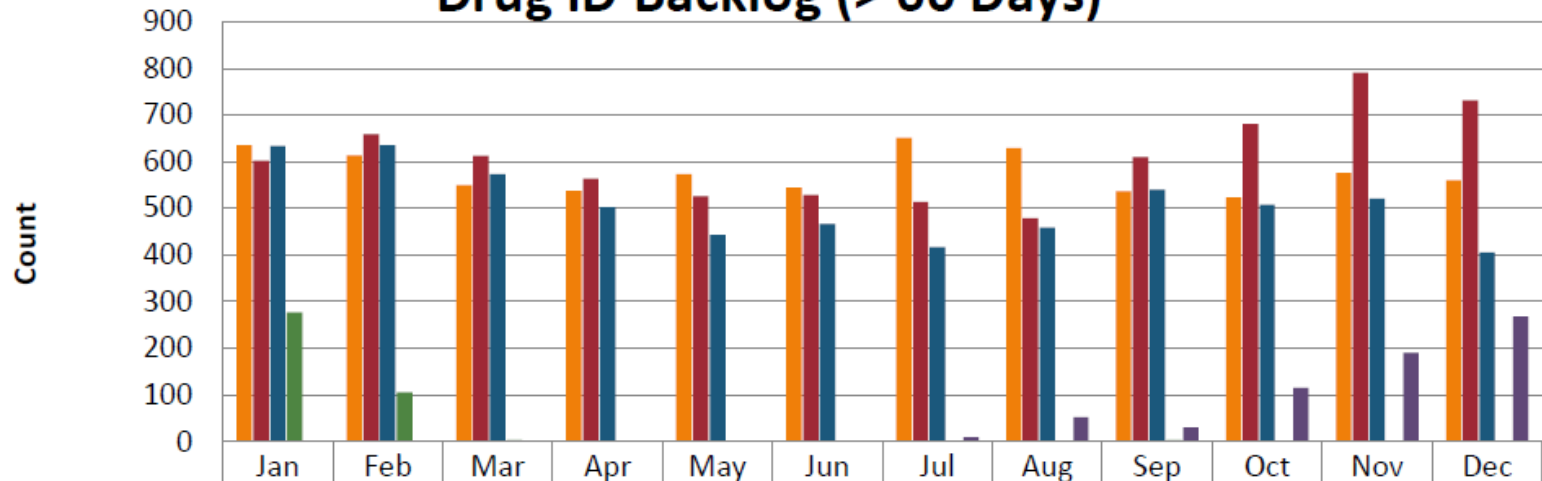
HPT Toxicology Cases Submitted



2019-2021 = 13.5% increase

Drug Identification

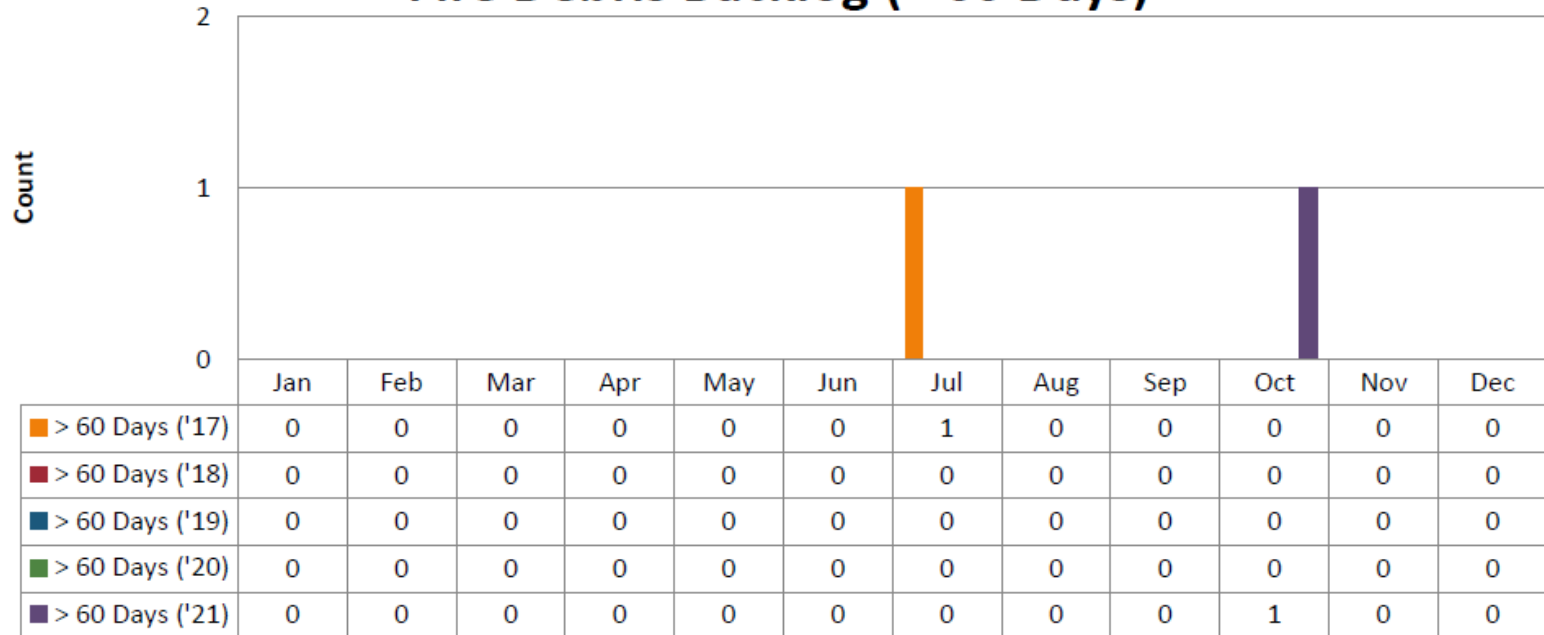
Drug ID Backlog (> 60 Days)



	Jan	Feb	Mar	Apr	May	Jun	Jul	Aug	Sep	Oct	Nov	Dec
■ > 60 Days ('17)	636	614	550	537	573	545	651	629	536	524	576	560
■ > 60 Days ('18)	602	659	613	563	526	529	514	479	610	681	791	732
■ > 60 Days ('19)	634	636	573	503	443	466	417	459	540	508	521	406
■ > 60 Days ('20)	277	106	4	0	0	0	0	1	3	0	1	0
■ > 60 Days ('21)	0	1	1	0	2	1	10	53	31	115	191	268

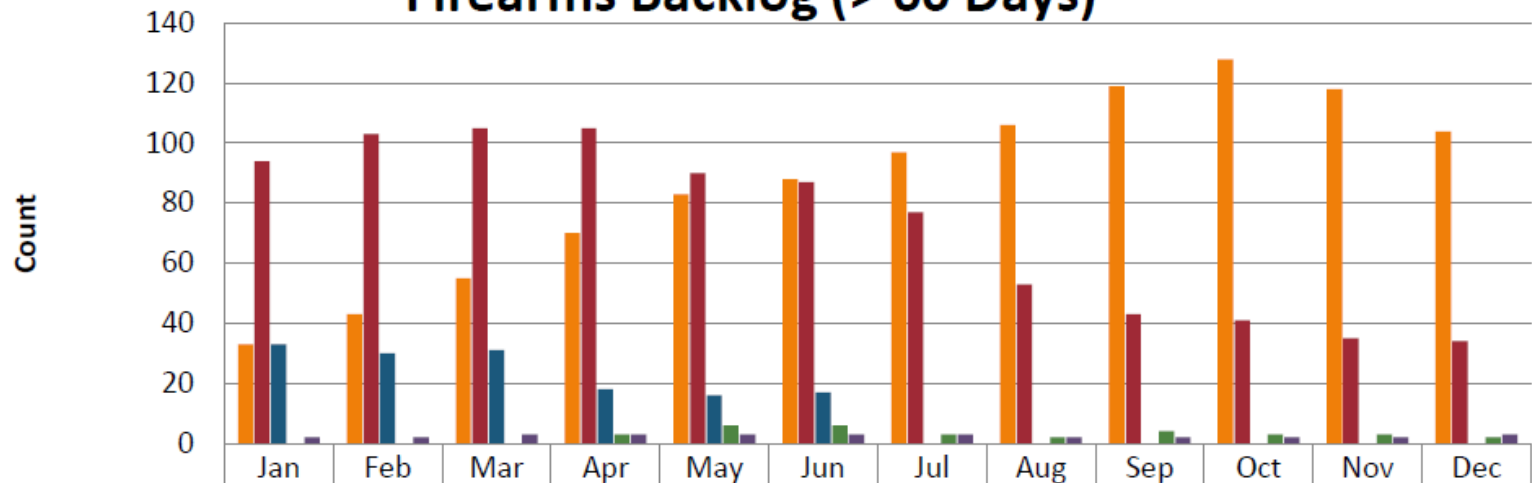
Fire Debris

Fire Debris Backlog (> 60 Days)



Firearms

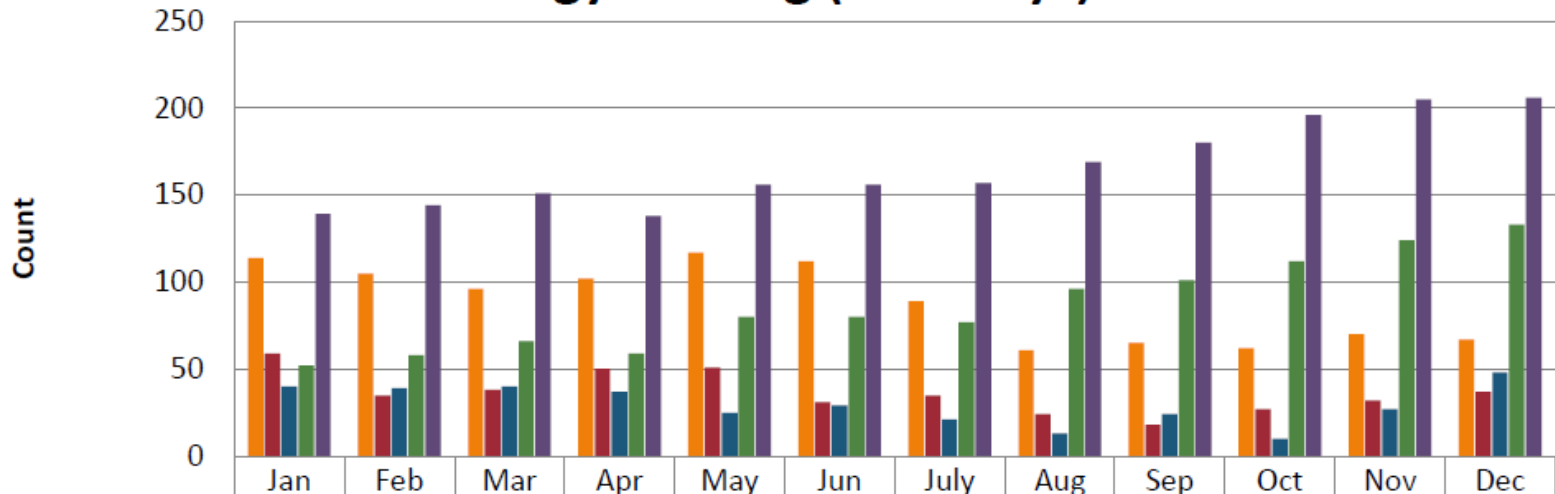
Firearms Backlog (> 60 Days)



	Jan	Feb	Mar	Apr	May	Jun	Jul	Aug	Sep	Oct	Nov	Dec
■ > 60 Days ('17)	33	43	55	70	83	88	97	106	119	128	118	104
■ > 60 Days ('18)	94	103	105	105	90	87	77	53	43	41	35	34
■ > 60 Days ('19)	33	30	31	18	16	17	0	0	0	0	0	0
■ > 60 Days ('20)	0	0	0	3	6	6	3	2	4	3	3	2
■ > 60 Days ('21)	2	2	3	3	3	3	3	2	2	2	2	3

Biology / DNA

Biology Backlog (> 60 Days)



	Jan	Feb	Mar	Apr	May	Jun	July	Aug	Sep	Oct	Nov	Dec
> 60 Days ('17)	114	105	96	102	117	112	89	61	65	62	70	67
> 60 Days ('18)	59	35	38	50	51	31	35	24	18	27	32	37
> 60 Days ('19)	40	39	40	37	25	29	21	13	24	10	27	48
> 60 Days ('20)	52	58	66	59	80	80	77	96	101	112	124	133
> 60 Days ('21)	139	144	151	138	156	156	157	169	180	196	205	206

Summary

Quarterly Summary:

- Demand for Autopsy (PM Tox) and HPT increasing.
- Special projects (such as LIMS) and validations have required staff resources.
- Reno County is sending most cases to Johnson County.
- Will explore other counties as 2022 progresses.

Summary

Quarterly Summary:

- Had several resignations:
 - Evidence Tech and Admin Assistant departures.
 - Deputy Coroner Dr. Oeberst retired.
- Searching for Deputy Coroner, Chief Toxicologist, FS in Drug ID, Evidence Tech, Admin Assistant, Locum Tenens Pathologist.
- Had 5 scientists complete training: 2 DNA (body fluid), 2 Tox, 1 Firearms Examiner (testfires)
- Have had disruption in staffing due to COVID positivity rate.