



Sedgwick County



EMS



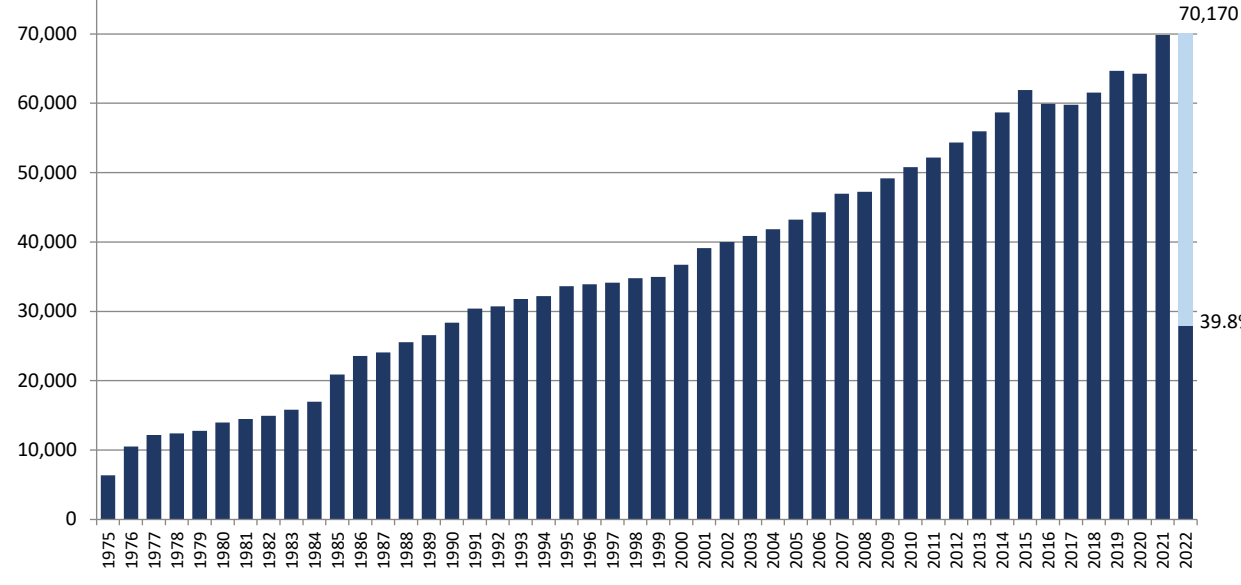
Monthly Operations Report May 2022

Prepared by Victor Okwo
EMS Systems & Chief Data Officer

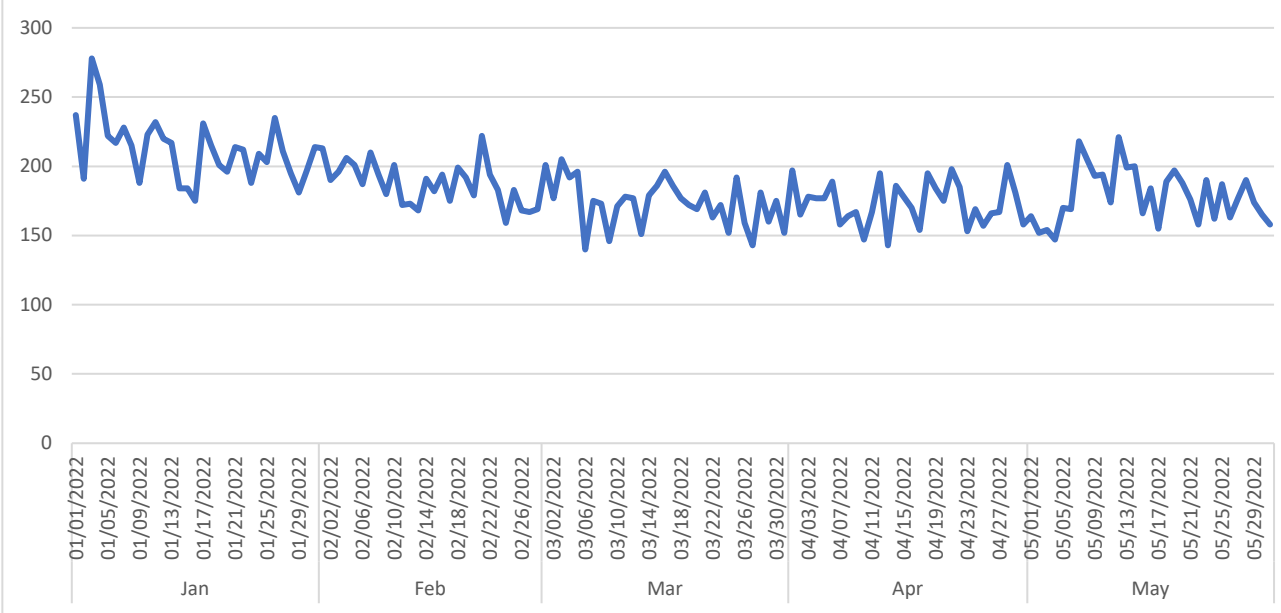
June 6, 2022

Call Volume & Response Time

Annual Call Volume

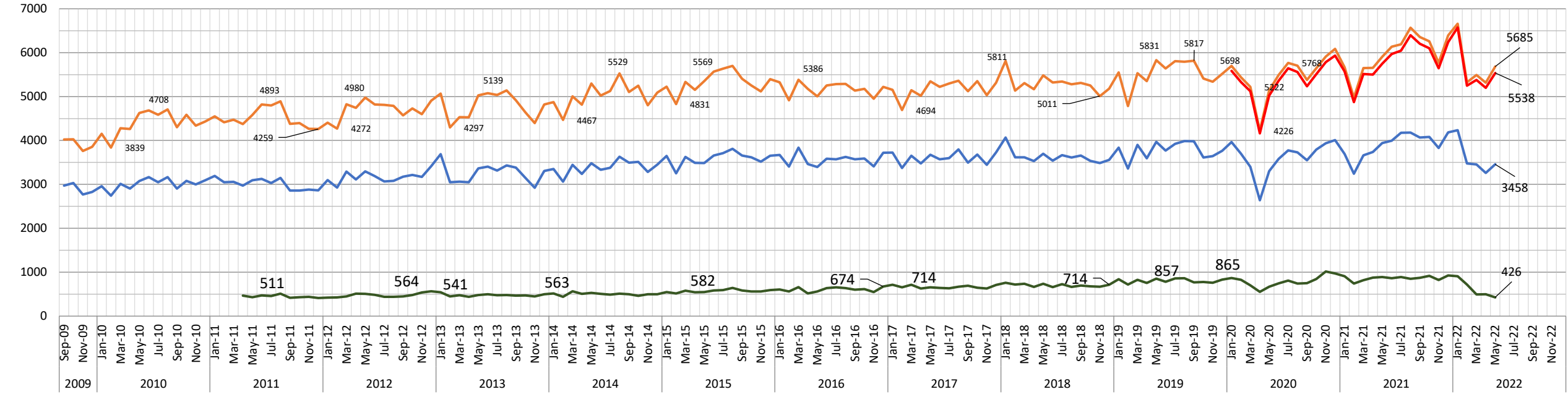


Calls by Day



— Total Charts
 — Transports
 — Non-Emerg
 — Distinct Call Count

Volume Trends by Month

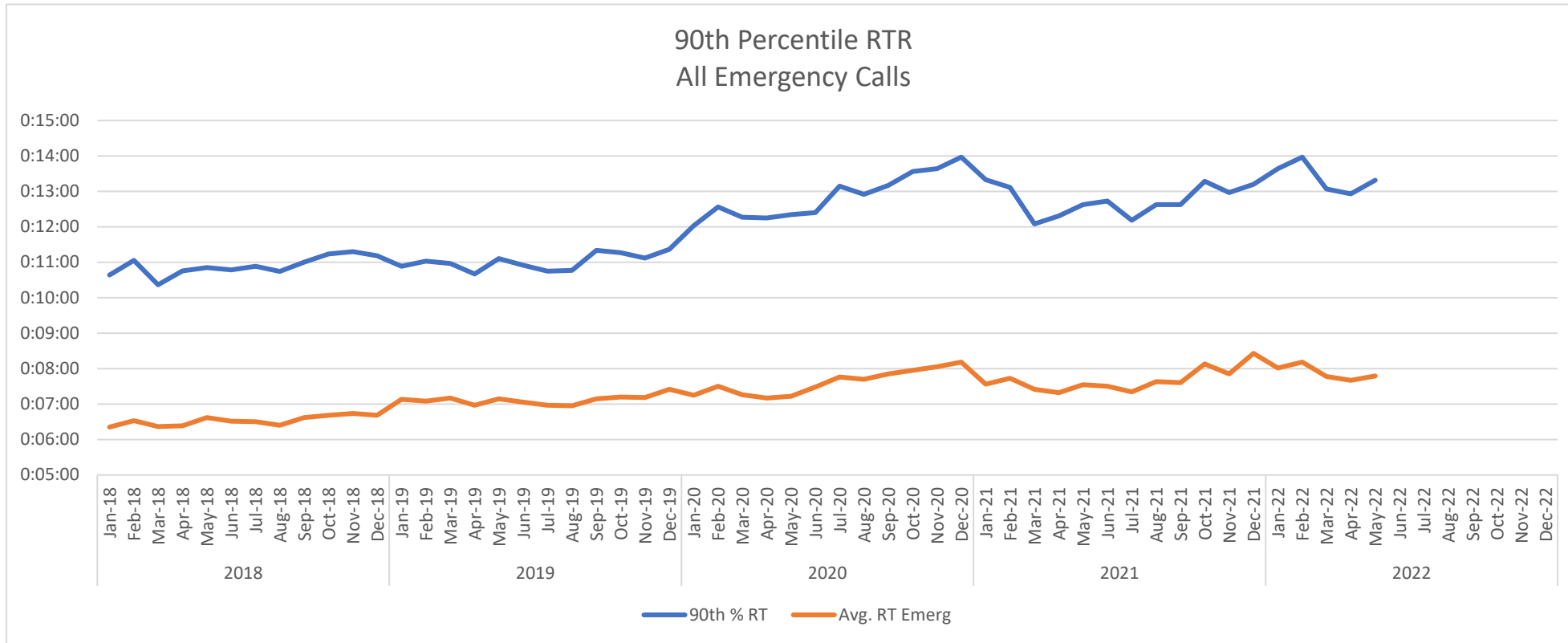


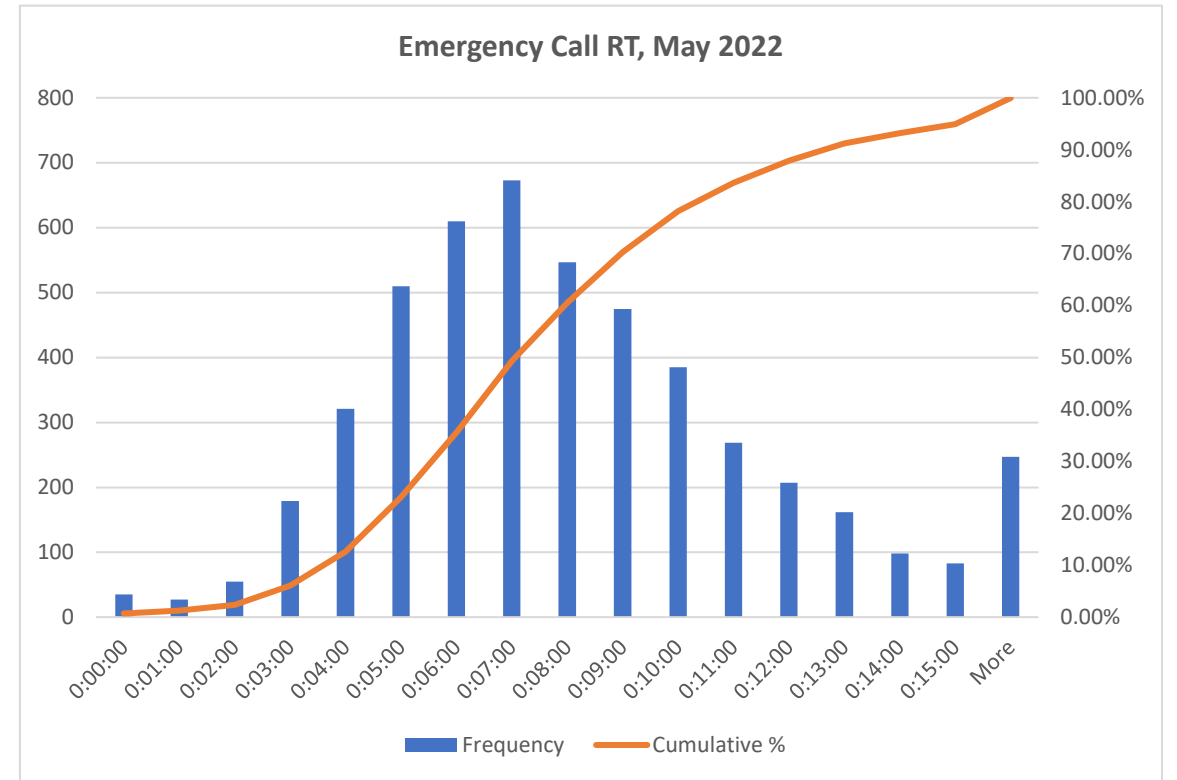
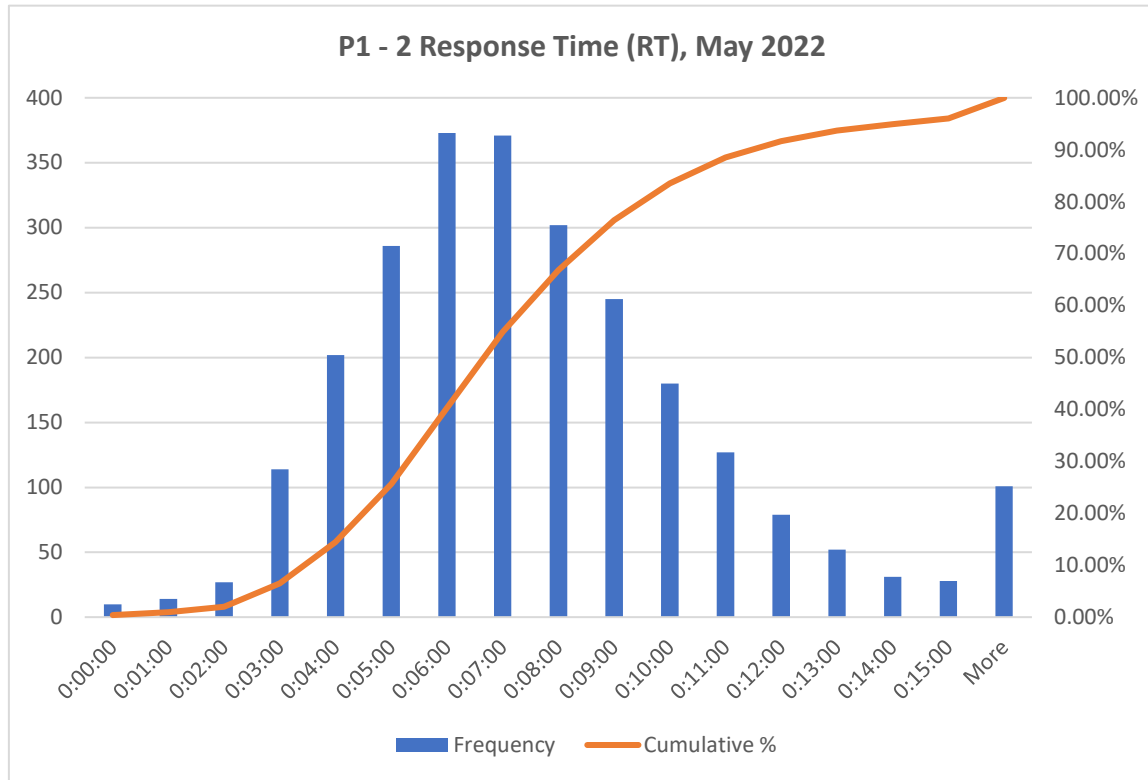
All Calls			Valid Calls			Transports				Non-Emergency		
Row Labels	Count of Call #	Avg/Day	Row Labels	Count of Call #		Row Labels	Count of Call #	Txport %	Txport Valid %	Row Labels	Count of Call #	Avg/Day
Jan	6,572	212	Jan	5,804	88.3%	Jan	4,236	64.5%	73%	Jan	908	29
Feb	5,248	187	Feb	4,587	87.4%	Feb	3,477	66.3%	75.8%	Feb	718	26
Mar	5,377	173	Mar	4,688	87.2%	Mar	3,454	64.2%	73.7%	Mar	491	16
Apr	5,200	173	Apr	4,486	86.3%	Apr	3,260	62.7%	72.7%	Apr	497	17
May	5,538	179	May	4,810	86.9%	May	3,458	62.4%	71.9%	May	426	14
Jun			Jun			Jun				Jun		
Jul			Jul			Jul				Jul		
Aug			Aug			Aug				Aug		
Sept			Sept			Sept				Sept		
Grand Total	27,935	185	Grand Total	24,375	87.3%	Grand Total	17,885	64.0%	73.4%	Grand Total	3,040	20

CRV		
Row Labels	Count of Call #	Avg/Day
Jan	19	0.6
Feb	15	0.5
Mar	9	0.3
Apr	12	0.4
May	17	0.5
Jun		
Jul		
Aug		
Sept		
Grand Total	72	0.5

RT All Calls		
	Average of RT	90th %
Jan	0:08:01	0:15:24
Feb	0:08:09	0:15:02
Mar	0:07:45	0:13:48
Apr	0:07:40	0:14:15
May	0:07:52	0:15:50
Jun		
Jul		
Aug		
Sept		
Grand Total	0:07:53	0:14:55

RT P1 & P2 (Lights & Sirens)		
	Average of RT	90th %
Jan	0:07:43	0:13:02
Feb	0:07:44	0:12:58
Mar	0:07:27	0:12:27
Apr	0:07:17	0:12:26
May	0:07:19	0:12:28
Jun		
Jul		
Aug		
Sept		
Grand Total	0:07:30	0:12:41





Response times (RT) are measured from dispatch to arrival on scene. EMS responds to calls using lights and sirens on Priority 1 and 2 emergency calls only, which was 52% of emergency calls in May.

Critical Status Events

Critical Status refers to a situation where the number of available ambulances is reduced to three or less, for a duration of at least 60 seconds.

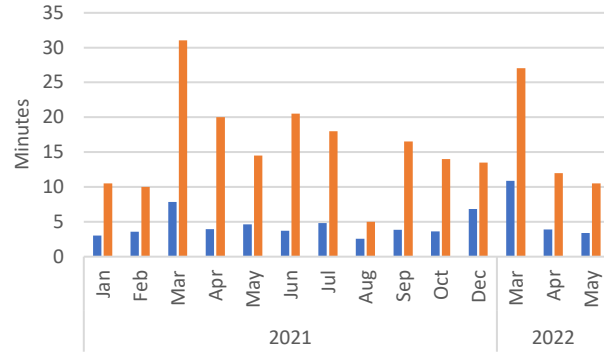
Critical Status Events

■ Average of Duration (min)

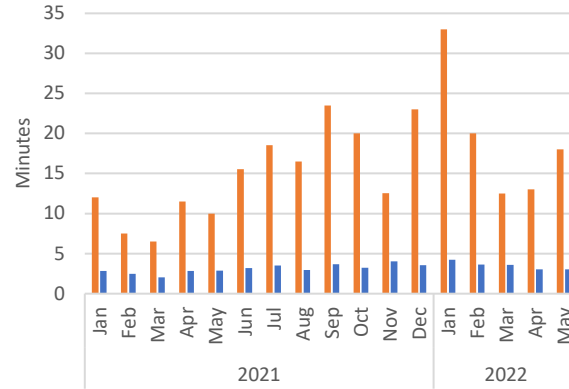
■ Max of Duration (min)

No Status 0 events in Jan & Feb 2022

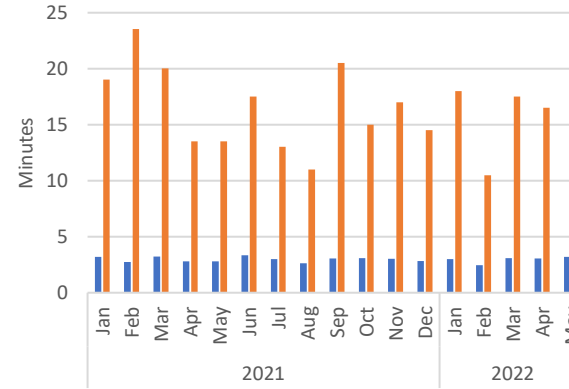
Status 0 Events
(≥ 1 min duration)



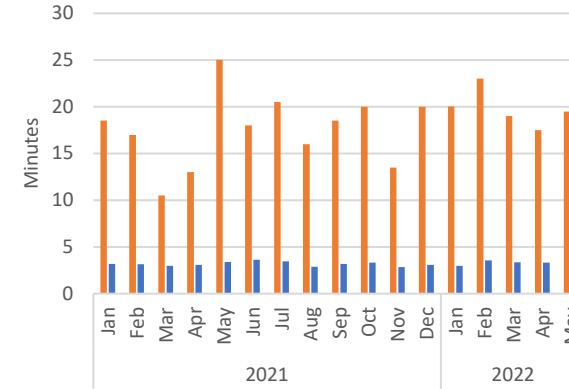
Status 1 Events
(≥ 1 min duration)



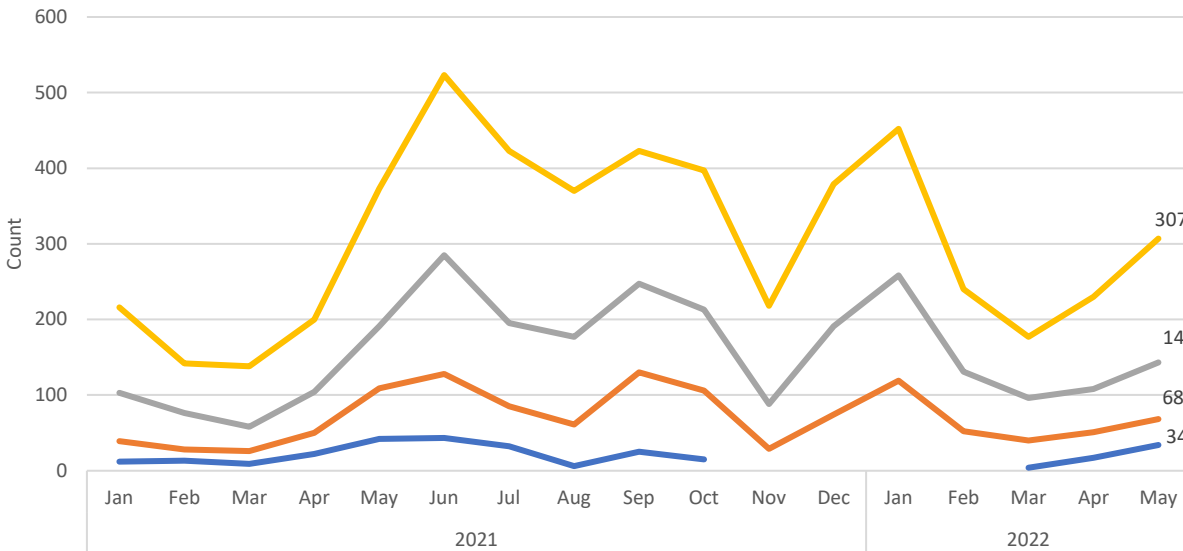
Status 2 Events
(≥ 1 min duration)



Status 3 Events
(≥ 1 min duration)



Frequency of "Critical Status" Events
(≤ 3 ambulances; ≥ 1 min duration)



Sum of Duration (min)	Status Level				Total (min)
	0	1	2	3	
Jan		504.4	776.0	1351.8	2632.2
Feb		188.6	322.1	851.4	1362.1
Mar	43.5	143.5	297.1	592.9	1077.1
Apr	66.5	154.1	332.1	761.5	1314.2
May	114.5	206.6	459.8	1020.3	1801.3
Jun					
Jul					
Aug					
Sep					
Oct					
Nov					
Dec					
Total (min)	224.6	1197.3	2187.1	4577.8	8186.8

Staffing & Workload

Scheduled Unit Hours = 11,904

Produced Unit Hours = 10,521.5 (88%)

Sedgwick County EMS Resource Deployment Schedule

revised December 7, 2020; updated 12/21/2020

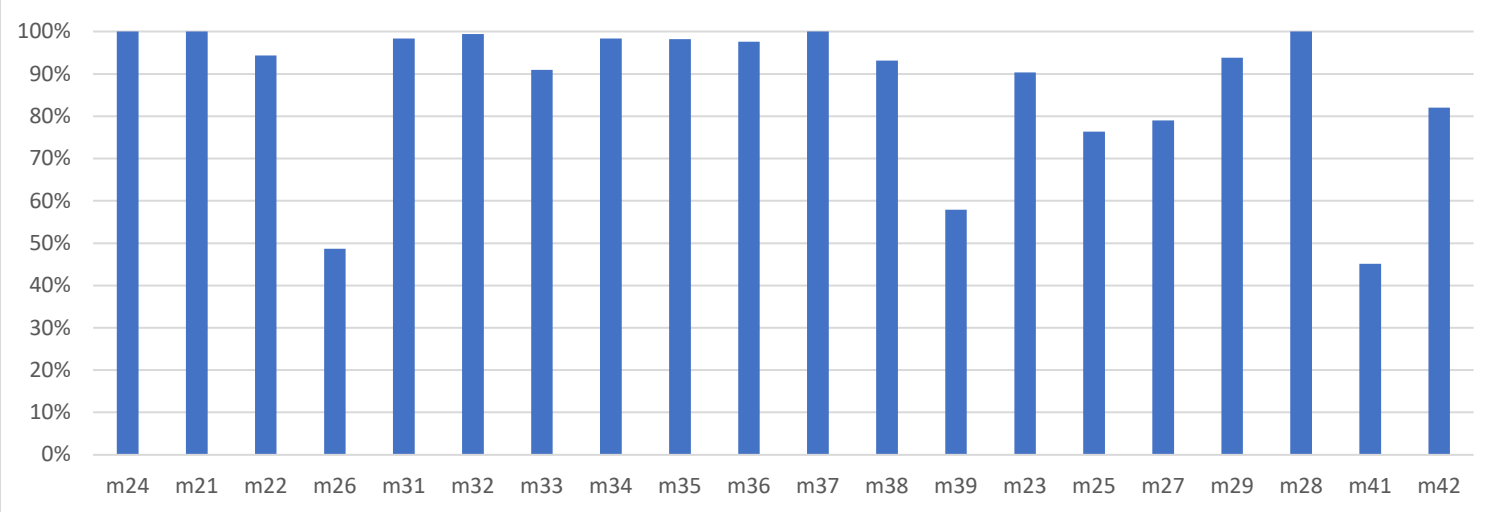
Unit		Post	Sunday		Monday		Tuesday		Wednesday		Thursday		Friday		Saturday	
Ambulance	21	11														
	22	12														
	26	14														
	27	16														
	31	1														
	32	2														
	33	3		0600-1800 1800-0600	0600-1800 1800-0600	0600-1800 1800-0600	0600-1800 1800-0600	0600-1800 1800-0600	0600-1800 1800-0600	0600-1800 1800-0600	0600-1800 1800-0600	0600-1800 1800-0600	0600-1800 1800-0600	0600-1800 1800-0600	0600-1800 1800-0600	0600-1800 1800-0600
	34	4														
	35	5														
	36	6														
	37	7														
	38	8														
	39	9														
	23	10		0900-2100	0900-2100	0900-2100	0900-2100	0900-2100	0900-2100	0900-2100	0900-2100	0900-2100	0900-2100	0900-2100	0900-2100	0900-2100
25	45 → 12		0900-2100	0900-2100	0900-2100	0900-2100	0900-2100	0900-2100	0900-2100	0900-2100	0900-2100	0900-2100	0900-2100	0900-2100	0900-2100	
42	14		0900-2100	0900-2100	0900-2100	0900-2100	0900-2100	0900-2100	0900-2100	0900-2100	0900-2100	0900-2100	0900-2100	0900-2100	0900-2100	
28	20		1200-0000	1200-0000	1200-0000	1200-0000	1200-0000	1200-0000	1200-0000	1200-0000	1200-0000	1200-0000	1200-0000	1200-0000	1200-0000	
29	5		1200-0000	1200-0000	1200-0000	1200-0000	1200-0000	1200-0000	1200-0000	1200-0000	1200-0000	1200-0000	1200-0000	1200-0000	1200-0000	
41	15		1200-0000	1200-0000	1200-0000	1200-0000	1200-0000	1200-0000	1200-0000	1200-0000	1200-0000	1200-0000	1200-0000	1200-0000	1200-0000	
44 (surge)	20		Varies	Varies	Varies	Varies	Varies	Varies	Varies	Varies	Varies	Varies	Varies	Varies	Varies	
SC	1 & 3	3	0600-1800 1800-0600	0600-1800 1800-0600	0600-1800 1800-0600	0600-1800 1800-0600	0600-1800 1800-0600	0600-1800 1800-0600	0600-1800 1800-0600	0600-1800 1800-0600	0600-1800 1800-0600	0600-1800 1800-0600	0600-1800 1800-0600	0600-1800 1800-0600	0600-1800 1800-0600	
	2	10	1000-2200	1000-2200	1000-2200	1000-2200	1000-2200	1000-2200	1000-2200	1000-2200	1000-2200	1000-2200	1000-2200	1000-2200	1000-2200	
APP	11 & 13	5	0600-1800 1800-0600	0600-1800 1800-0600	0600-1800 1800-0600	0600-1800 1800-0600	0600-1800 1800-0600	0600-1800 1800-0600	0600-1800 1800-0600	0600-1800 1800-0600	0600-1800 1800-0600	0600-1800 1800-0600	0600-1800 1800-0600	0600-1800 1800-0600	0600-1800 1800-0600	
	12	B1	1200-0000	1200-0000	1200-0000	1200-0000	1200-0000	1200-0000	1200-0000	1200-0000	1200-0000	1200-0000	1200-0000	1200-0000	1200-0000	
CRV	81	B1 → 81	0600 - 1800	0600 - 1800	0600 - 1800	0600 - 1800	0600 - 1800	0600 - 1800	0600 - 1800	0600 - 1800	0600 - 1800	0600 - 1800	0600 - 1800	0600 - 1800	0600 - 1800	
	82	B1 → 82	0600 - 1800	0600 - 1800	0600 - 1800	0600 - 1800	0600 - 1800	0600 - 1800	0600 - 1800	0600 - 1800	0600 - 1800	0600 - 1800	0600 - 1800	0600 - 1800	0600 - 1800	

SC = Shift Commander

APP = Advanced Practice Paramedic

CRV = Community Response Vehicle

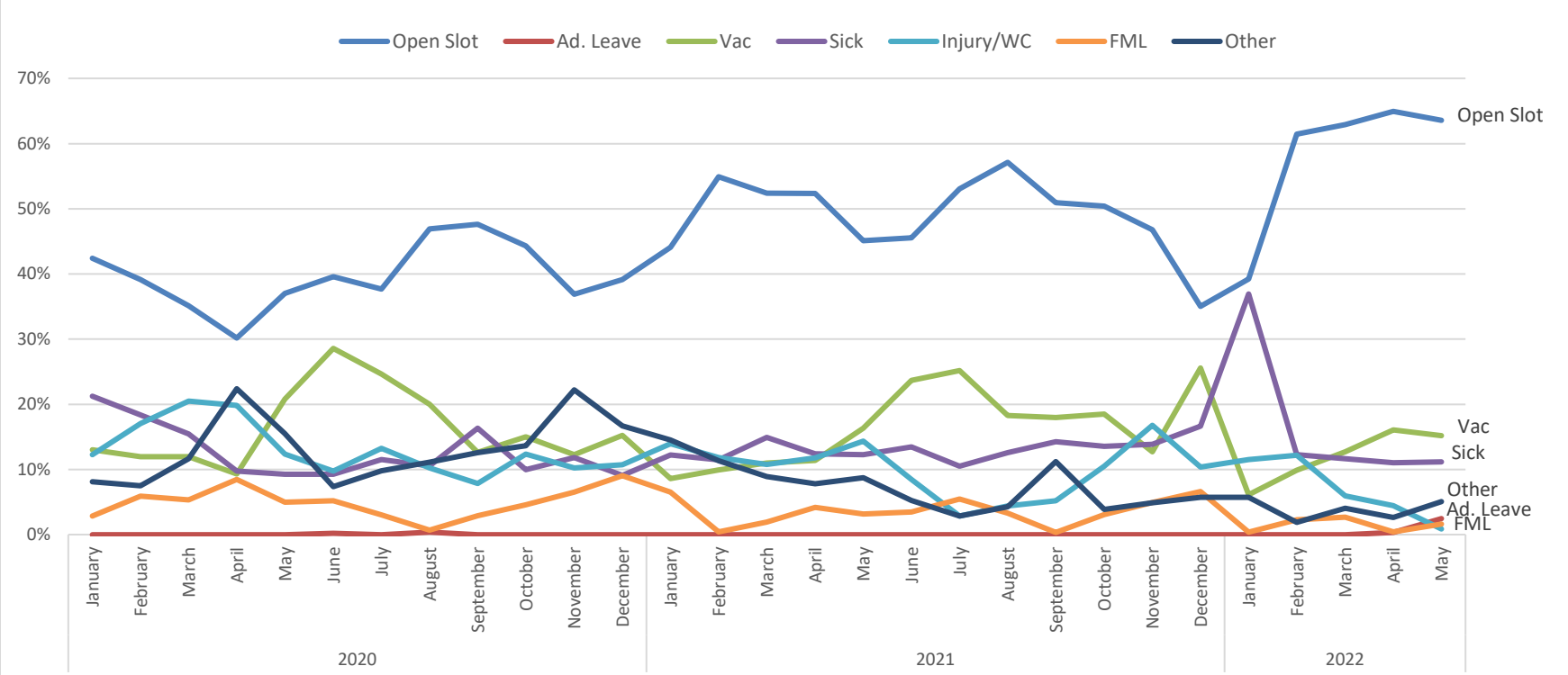
May Unit Uptime



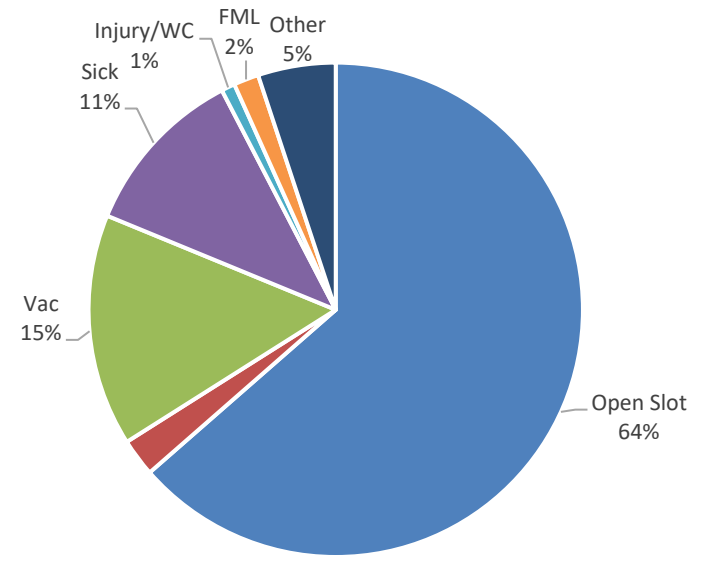
May ALS First Response Vehicle Uptime

	CRV 81 (Clearwater)	CRV 82 (Cheney)
Hours Scheduled	372	372
Hours staffed	261	255
Percentage staffed	70%	69%

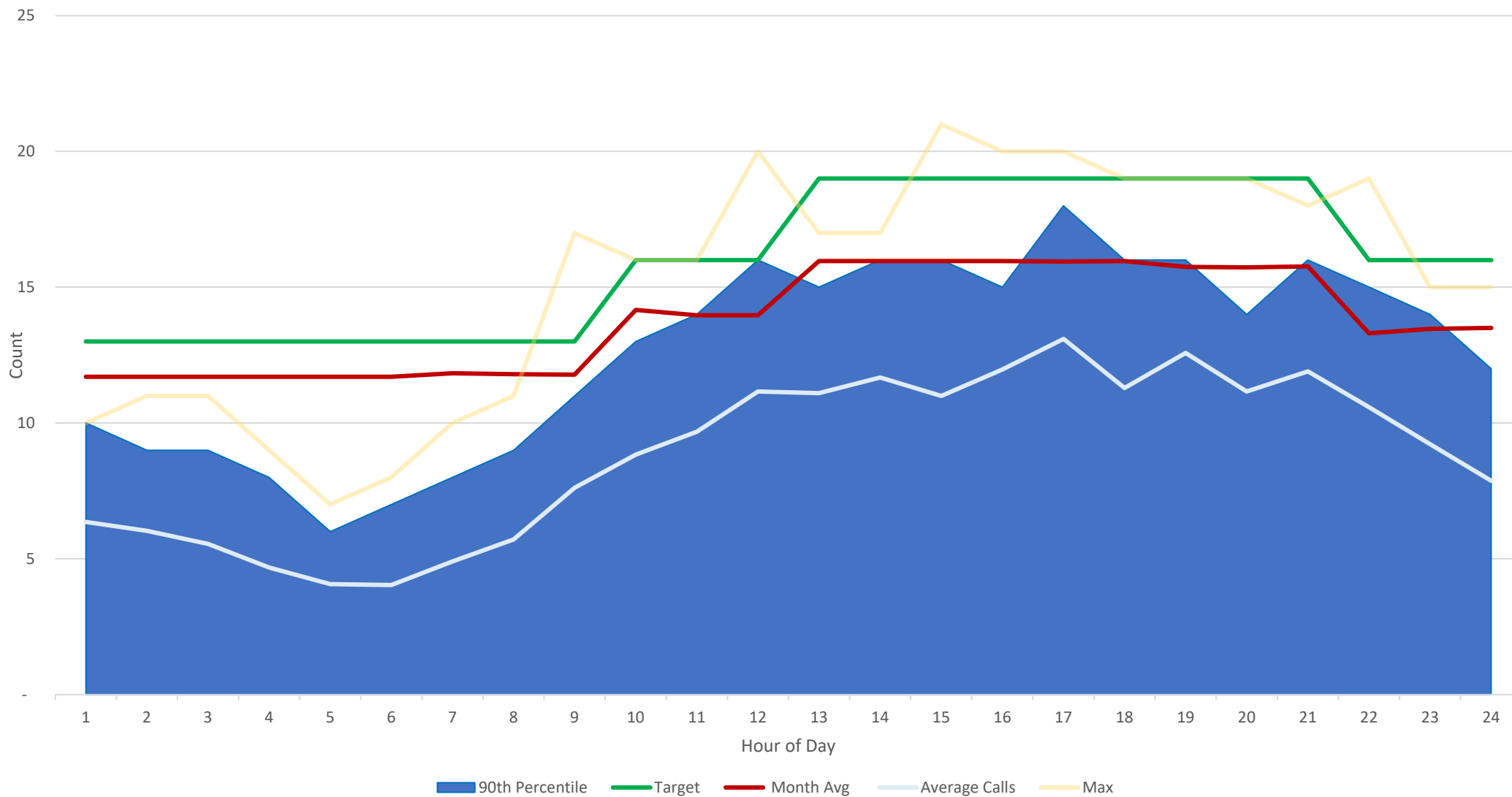
Unit Hour Reductions (Shut-Down) by Reason Trend



May Unit Hour Reduction by Reason



Monthly Resource Deployment Performance



This chart depicts the monthly staffing target and production against the average, 90th percentile, and maximum number of EMS responses for the month, across each hour of the day. It tabulates each call by the hour (integer) it was dispatched.