



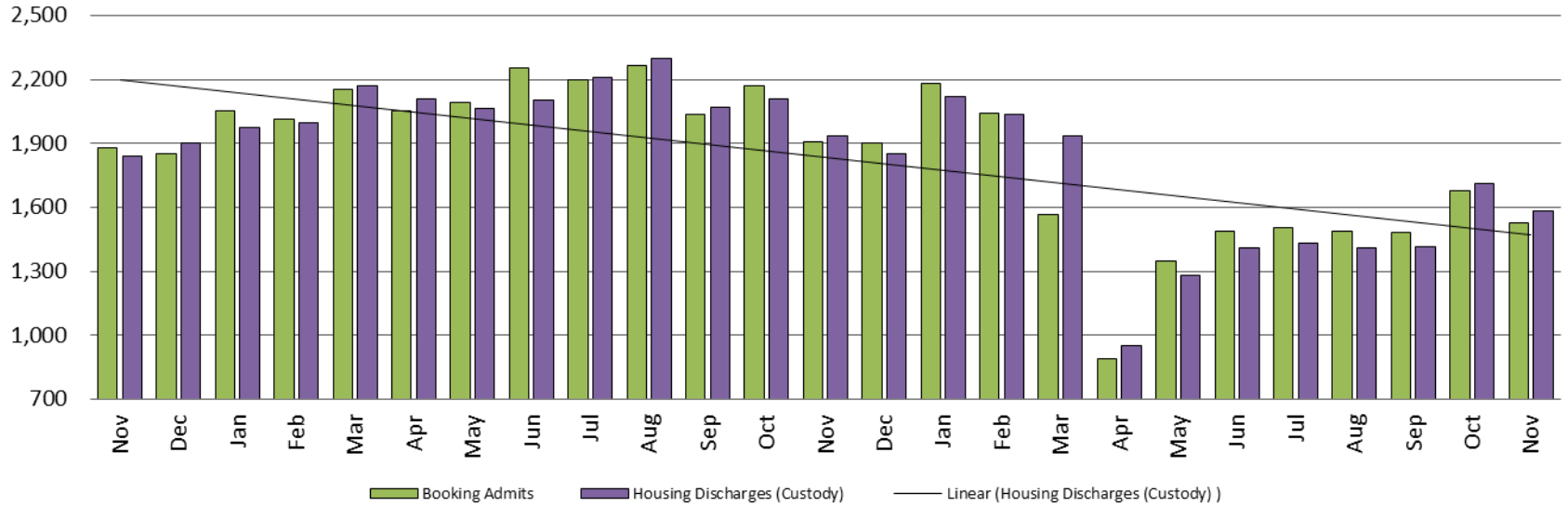
# Criminal Justice Coordinating Council

## Population Report & Program Trends

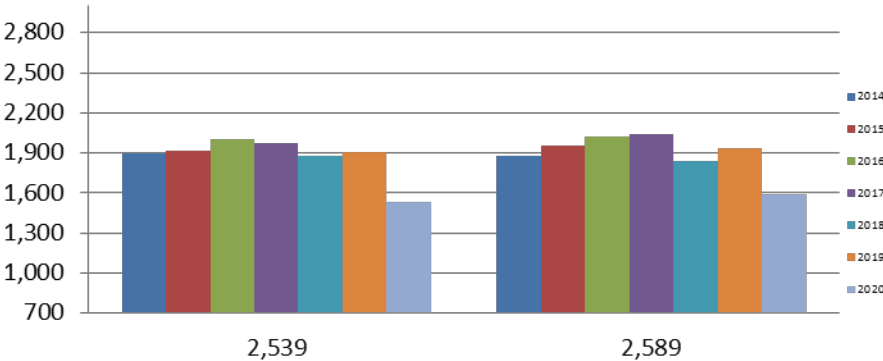
November 2020

# Detention Facility

## Booking Admits & Housing Discharges from Custody November 2018 - present



### Bookings Year over Year: Month of November



### Bookings November

2018: 1,880

2019: 1,910

2020: 1,530

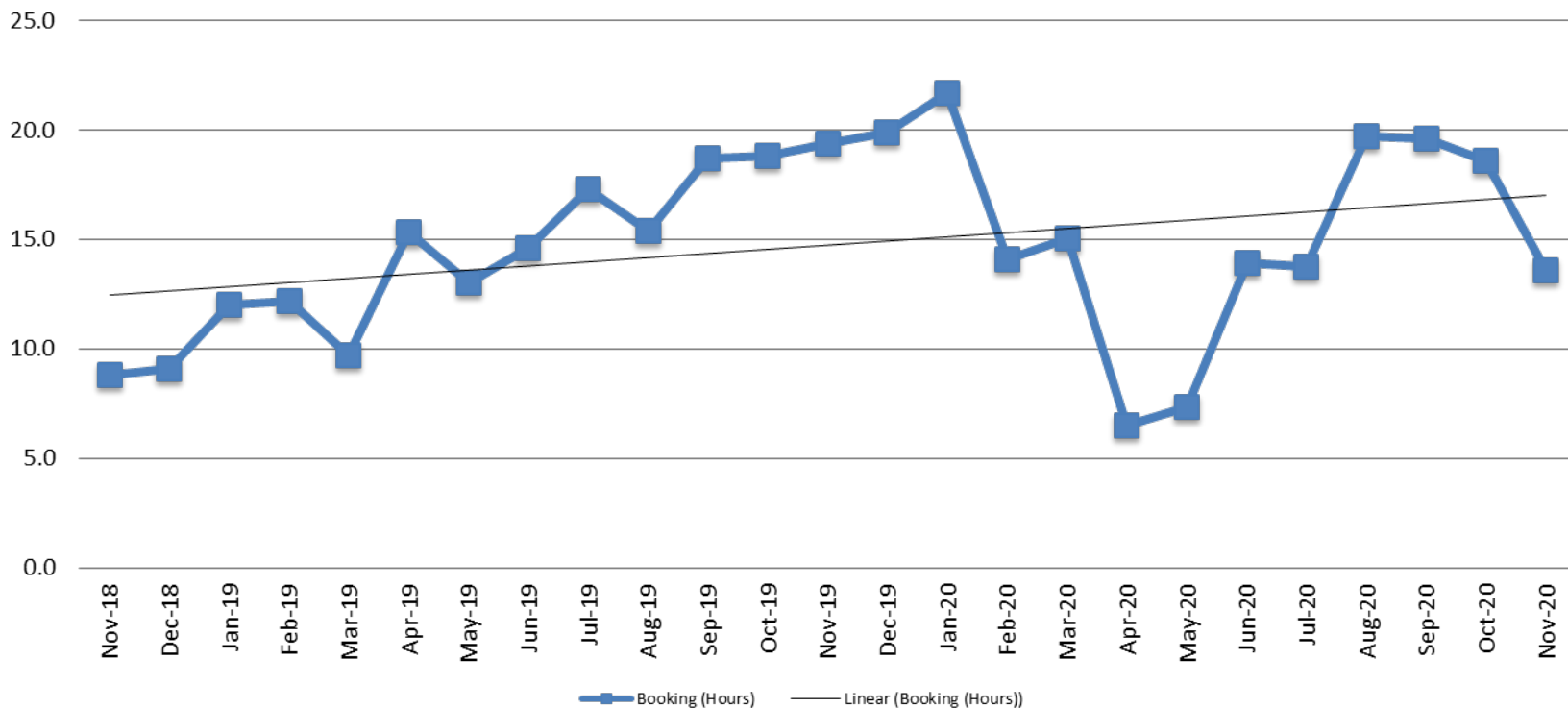
### Housing Discharges November

2018: 1,841

2019: 1,935

2020: 1,586

## Average Length of Stay: Booking (Hours) November 2018 - present

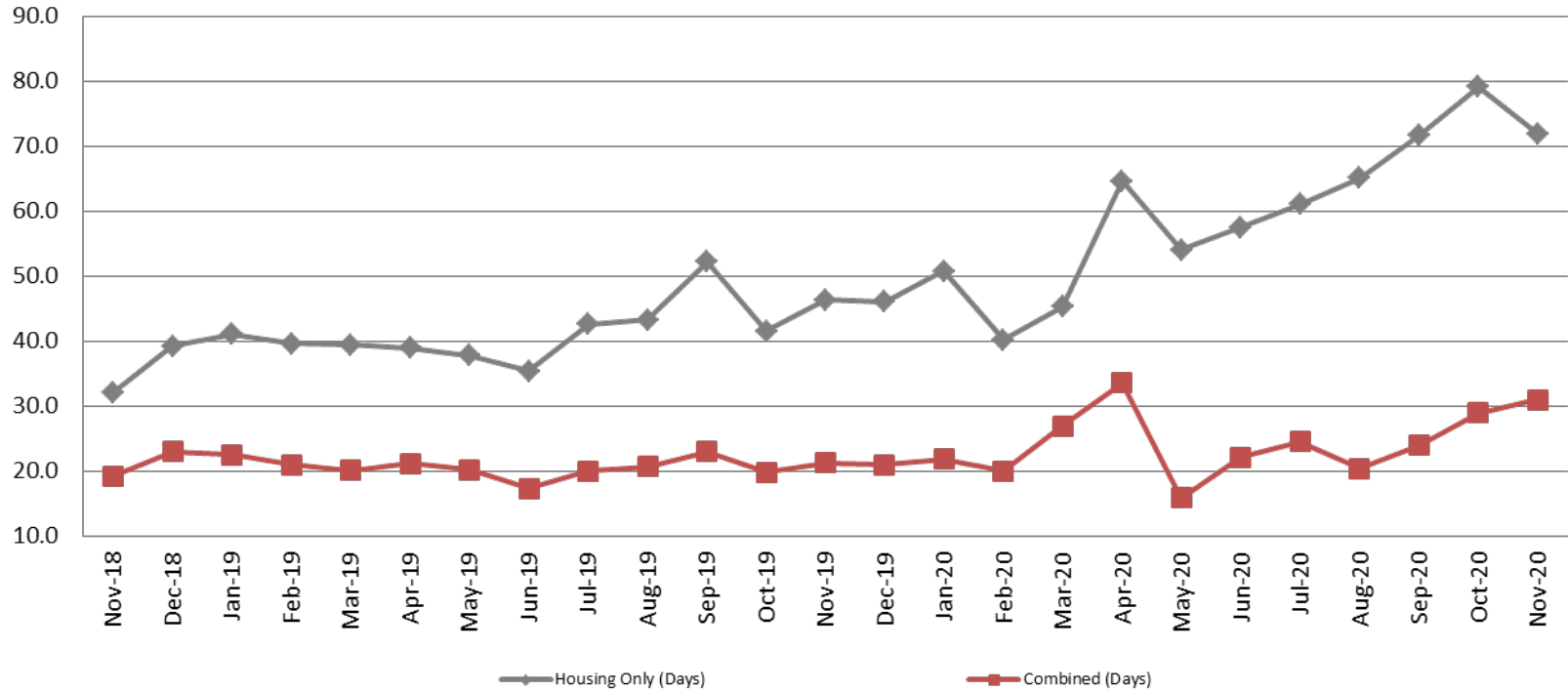


November	November YTD Average
2018: 8.8	2018: 10.4
2019: 19.4	2019: 15.1
2020: 13.6	2020: 14.9



# Average Length of Stay: Housing & Combined (Days)

November 2018 - present

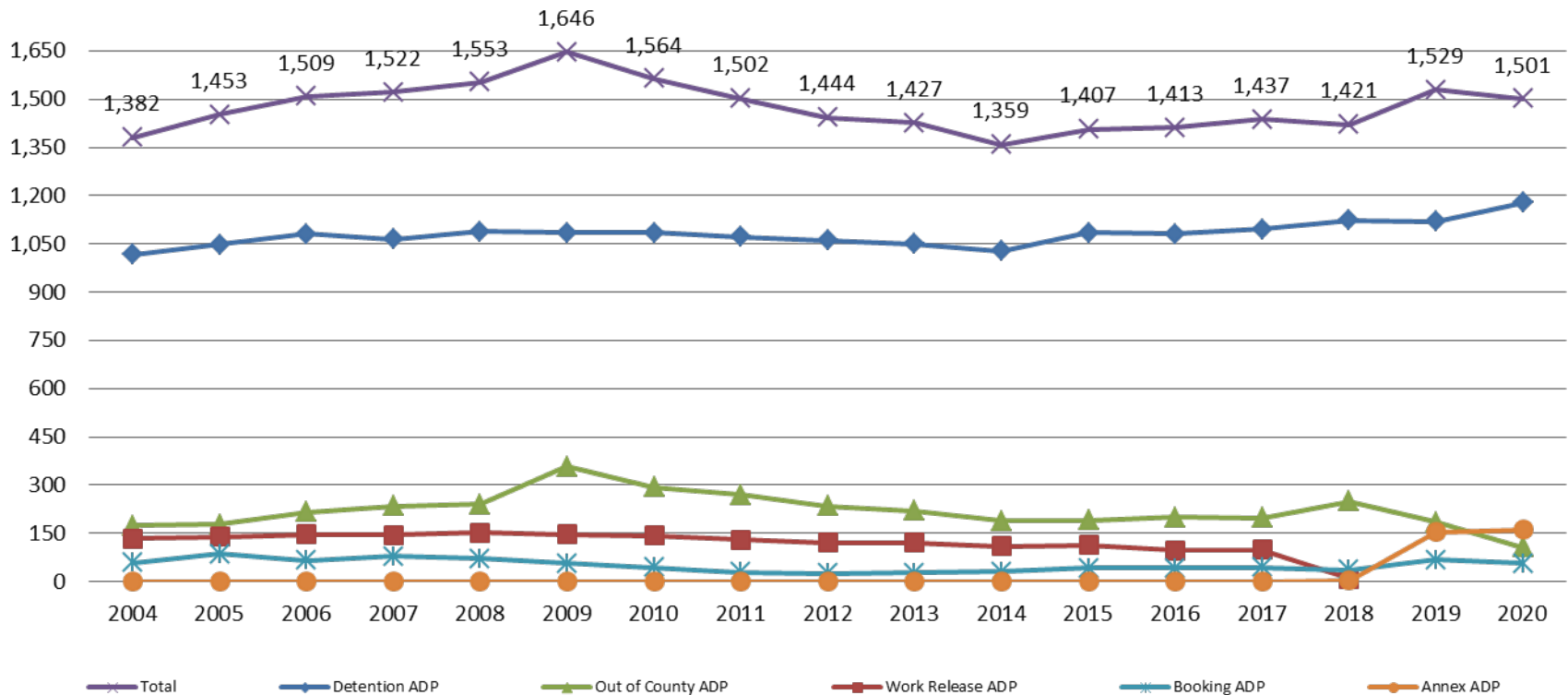


Month Year	Housing Only	Housing YTD AVG	Combined Days	Combined YTD AVG
November 2018	32.1	34.3	19.2	20.8
November 2019	46.3	41.7	21.3	20.6
November 2020	71.9	60.1	31.0	24.5



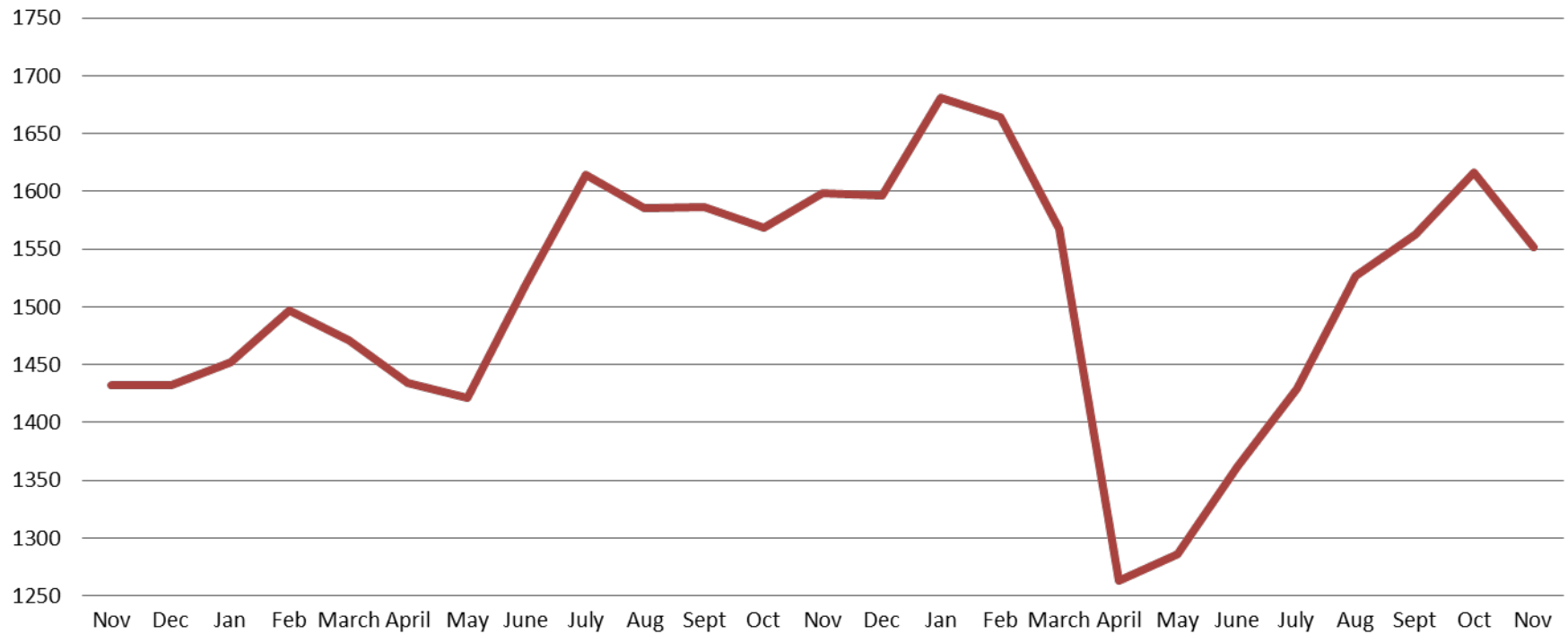
# Jail: Annual Average Daily Population (ADP)

**TRENDS: Booking, Detention, Work Release, & Out of County Annual ADP: 2004 - present**





# TOTAL MONTHLY ADP: JAIL (Booking, Detention Facility, Annex, & Out of County) November 2018 - present

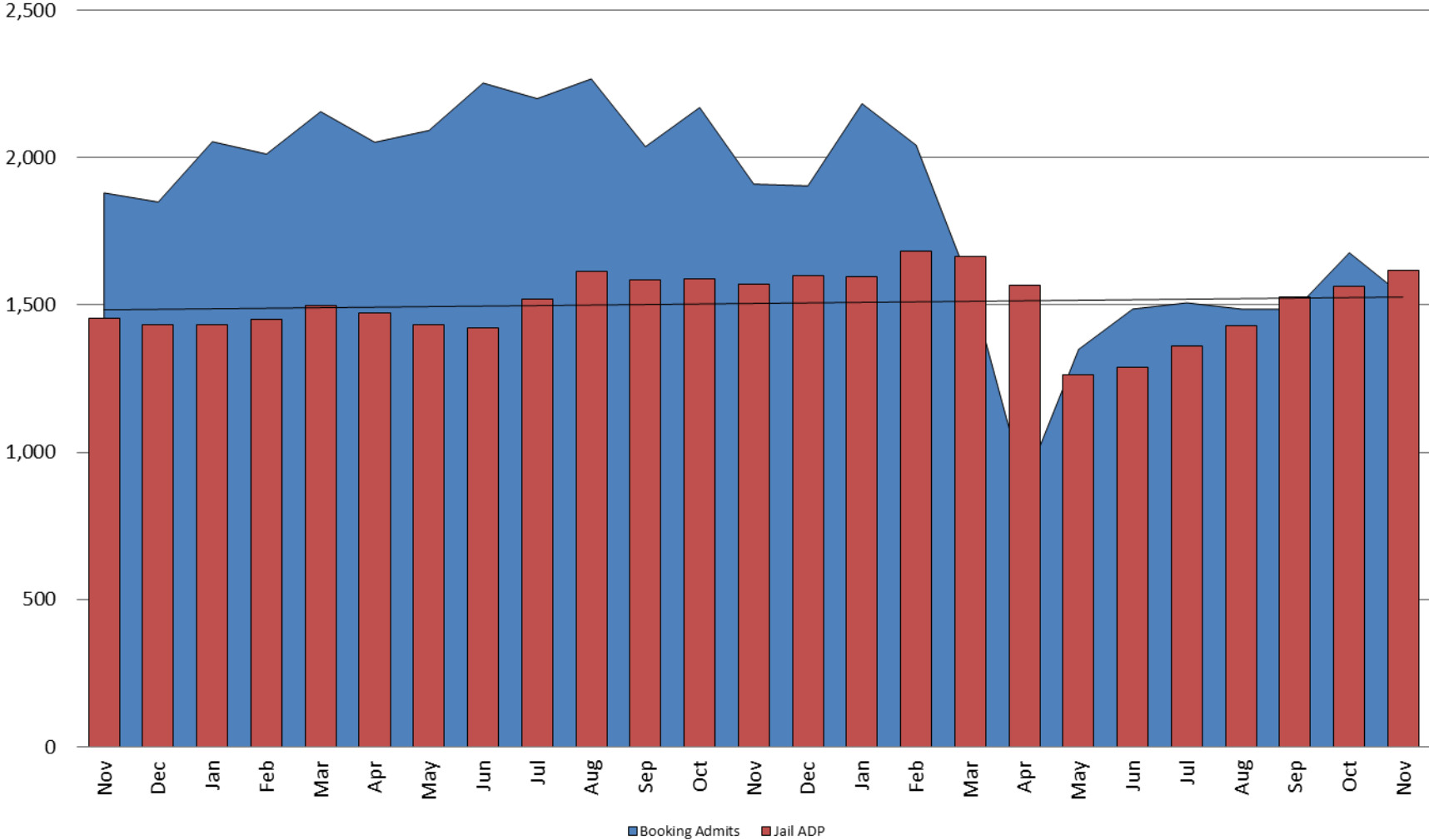


November 2018	November 2019	November 2020
1,432	1,598	1,552





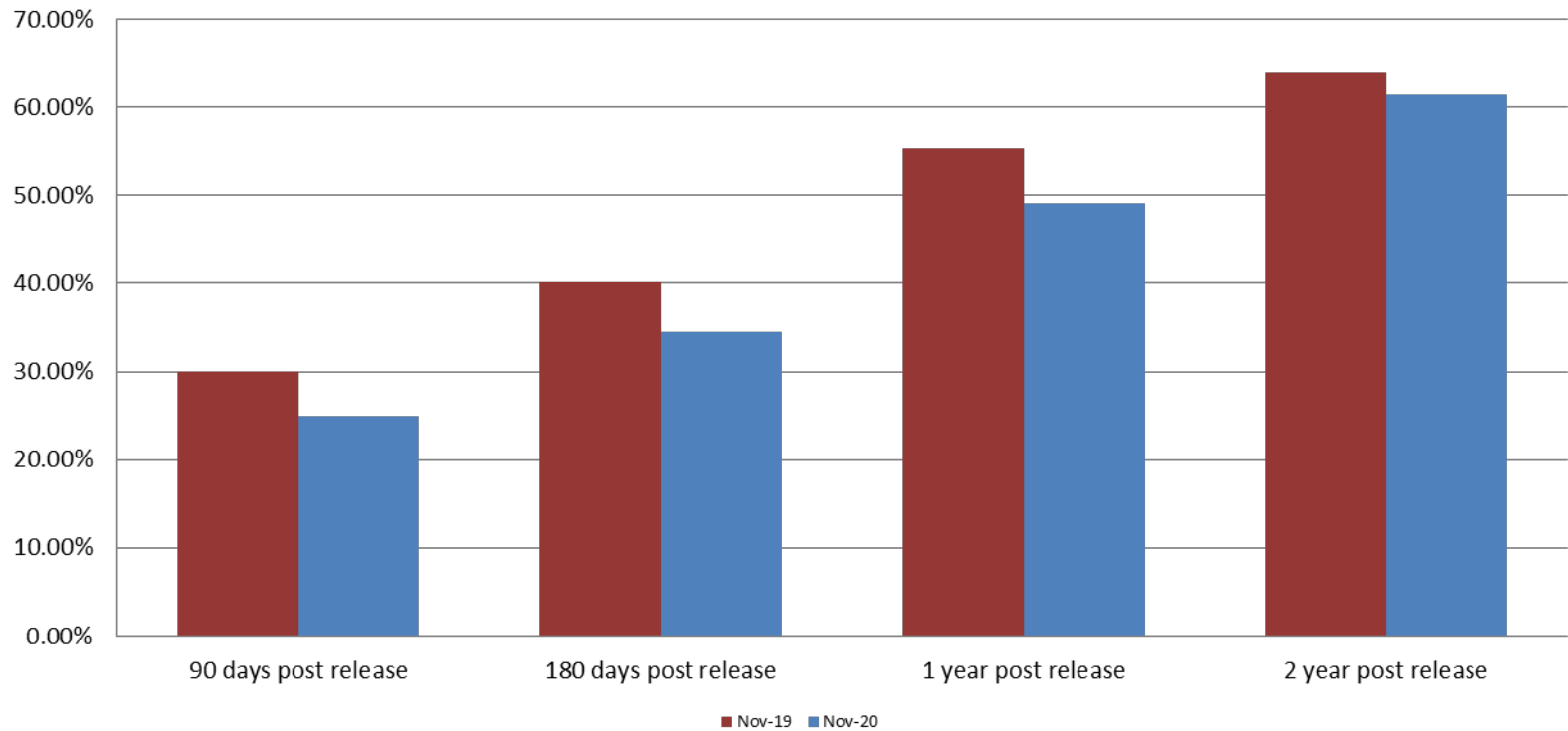
# Booking Admits & Total Monthly ADP (Jail): November 2018 - present



■ Booking Admits ■ Jail ADP



## Percent of released inmates rearrested November



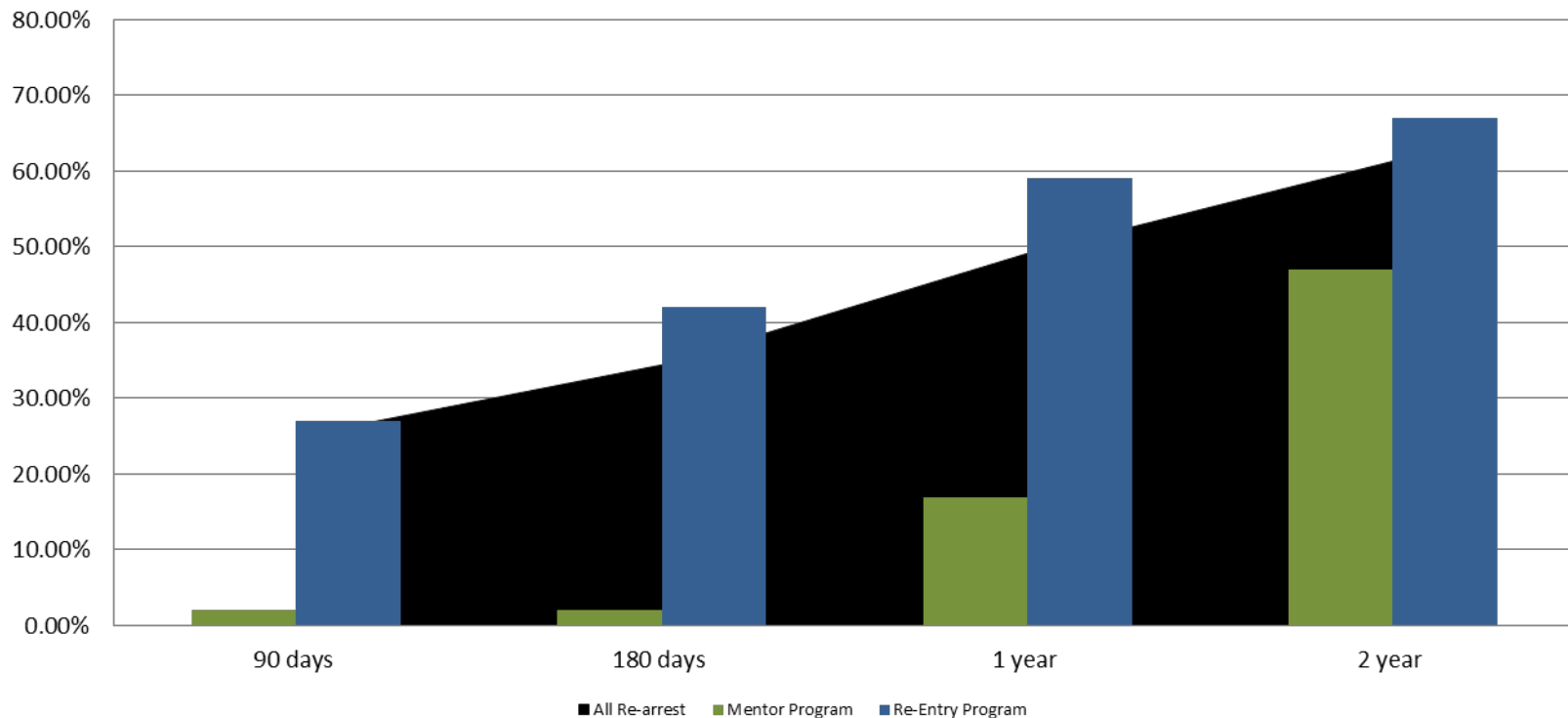
Month Year	90 Days	180 Days	1 Year	2 Years
November 2019	30.05%	40.16%	55.34%	63.97%
November 2020	24.92%	34.44%	49.16%	61.33%







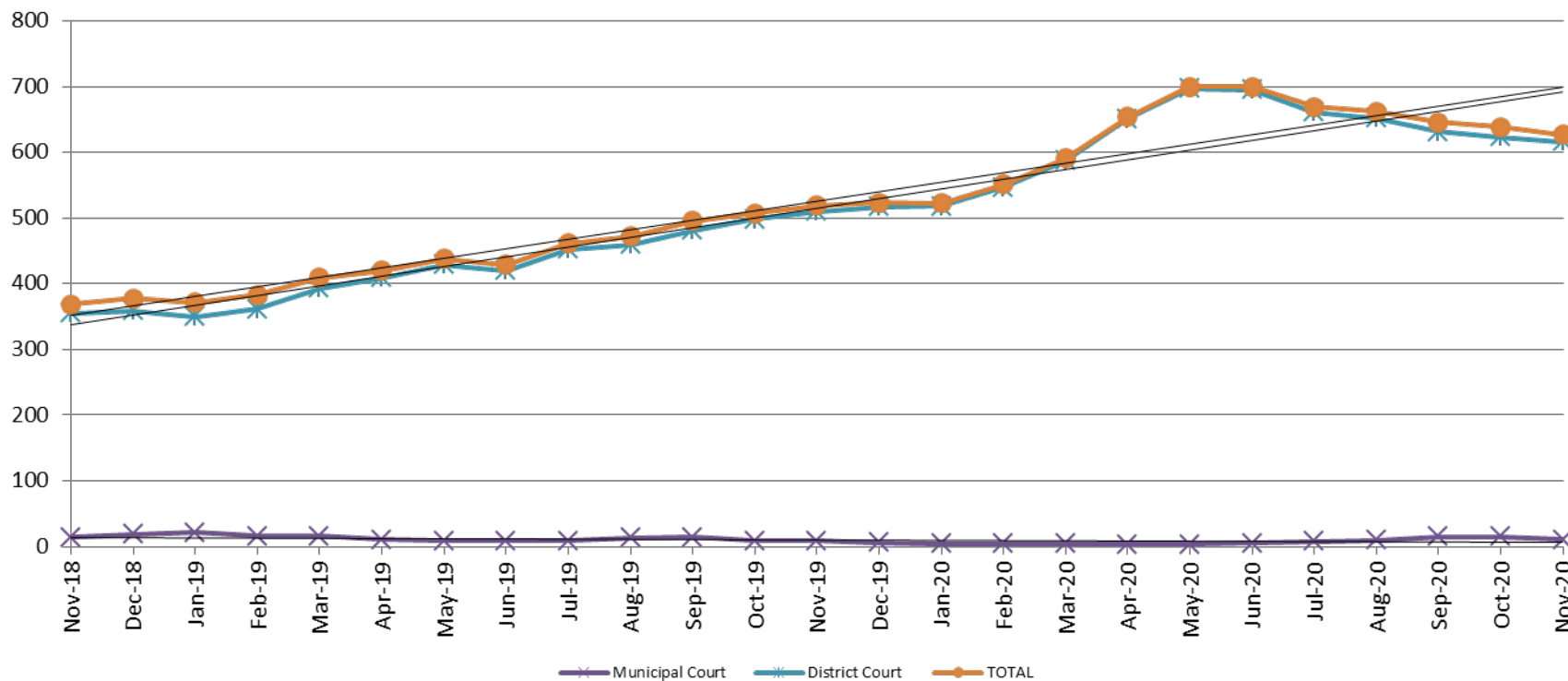
## Recidivism by Programs November 2020



November 2020	90 Days	180 Days	1 year	2 years
All Re-arrests	24.92%	34.44%	49.16%	61.33%
Mentor Program	2%	2%	17%	47%
Re-Entry Program	27%	42%	59%	67%



## Pretrial Services Program (PSP) Monthly ADP: November 2018 - present

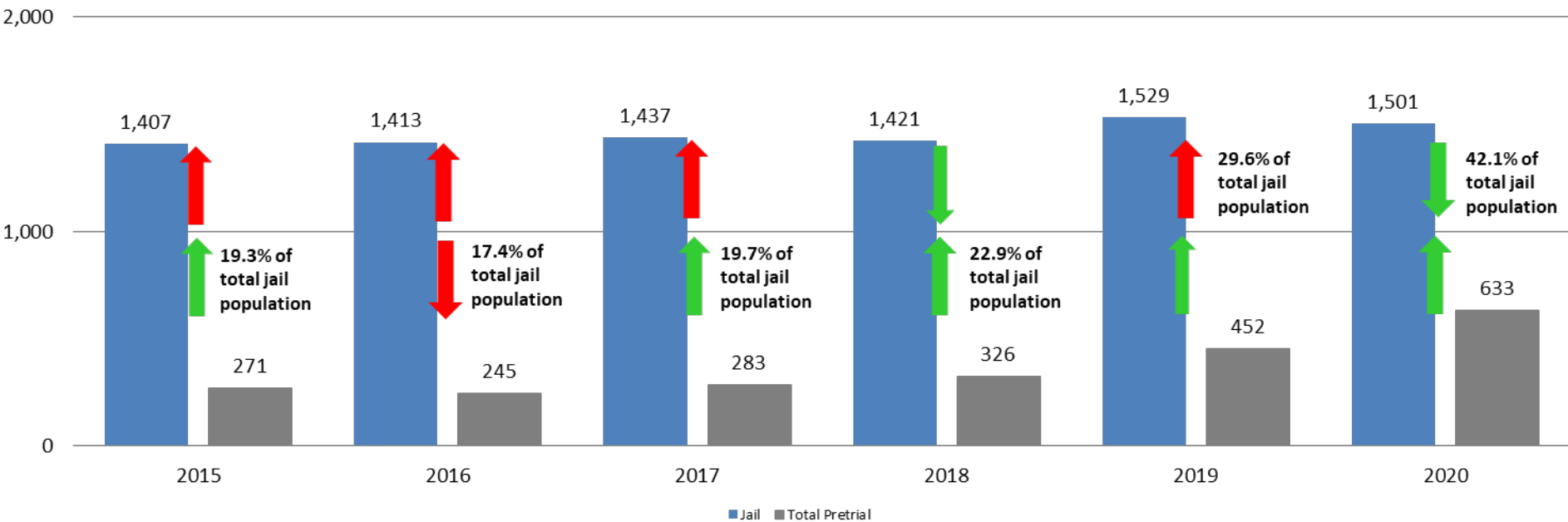


November	2018 ADP	2019 ADP	2020 ADP	2018 YTD Avg.	2019 YTD Avg.	2020 YTD Avg.
Muni. Court	14	9	11	25	12	7
Dist. Court	355	510	616	296	433	625
<b>Total</b>	<b>369</b>	<b>519</b>	<b>627</b>	<b>321</b>	<b>446</b>	<b>633</b>



# Correlation: Total & PSP

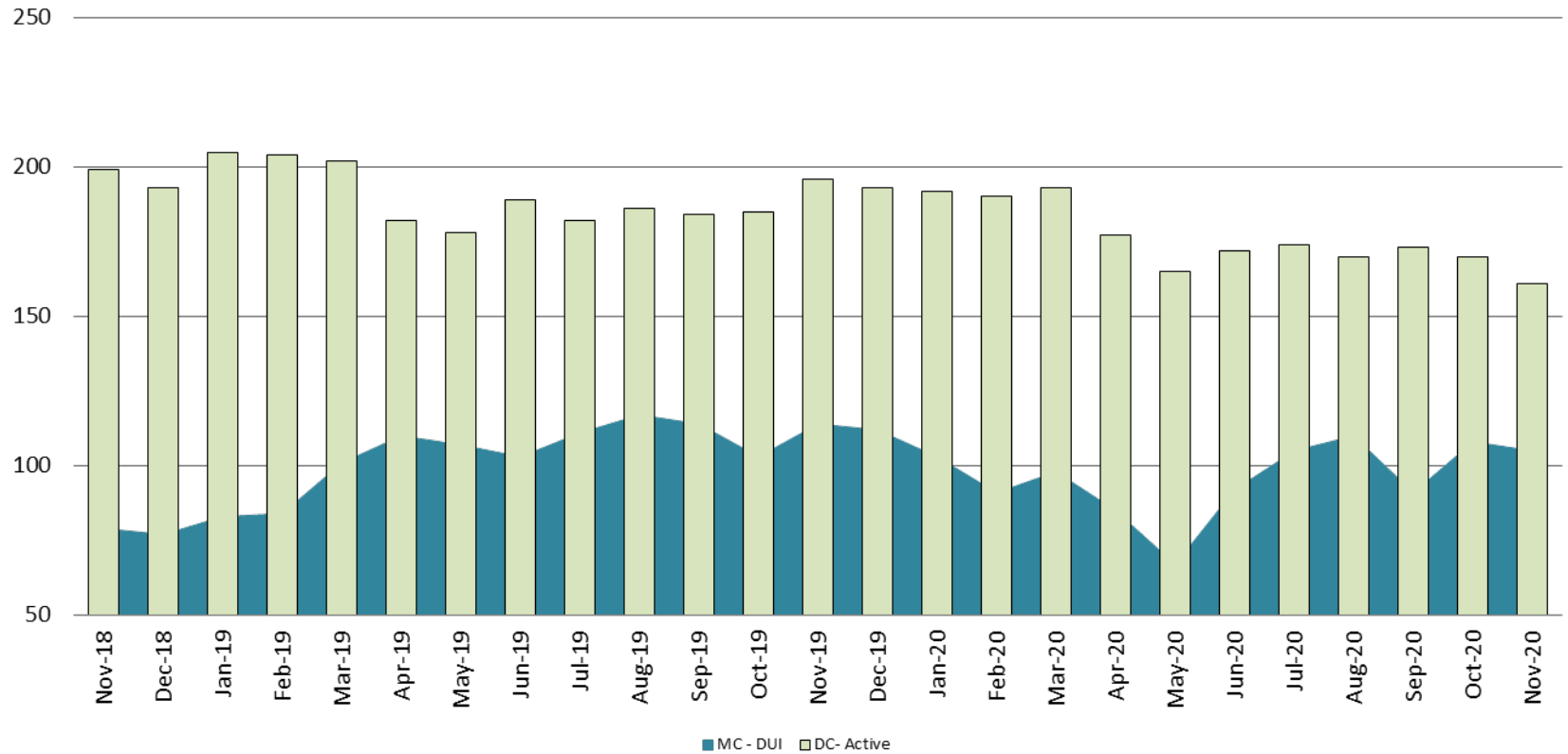
## Total Annual ADP: 2015 - present





# Diversion - Active Caseload

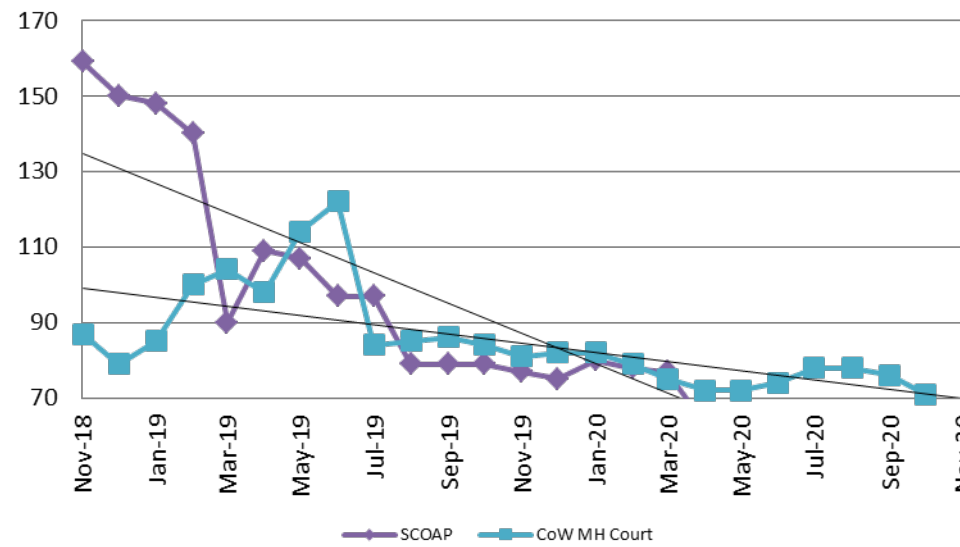
November 2018 - present



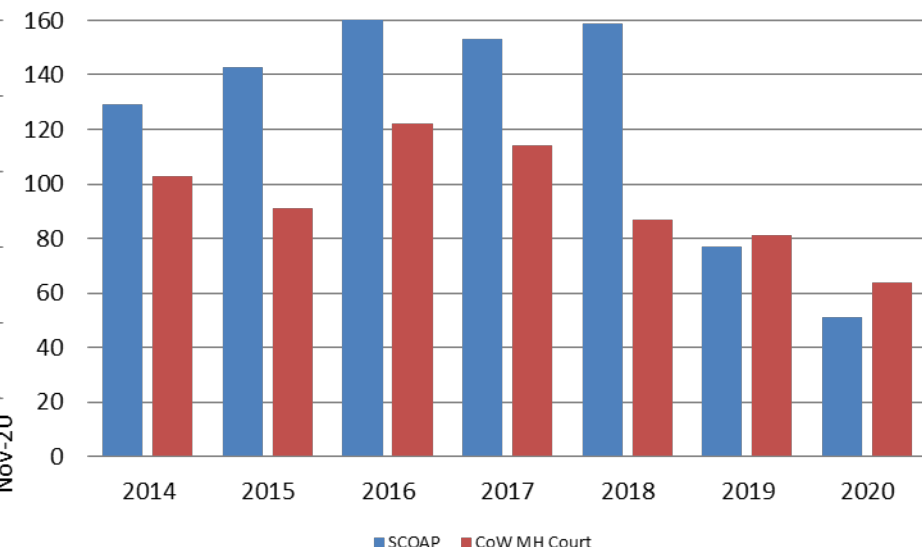
November	2018	2019	2020	2018 YTD Avg.	2019 YTD Avg.	2020 YTD Avg.
Muni. Court- DUI	79	114	105	74	104	96
Dist. Court- Active	199	196	161	198	190	176



## Mental Health - ADP November 2018 - present



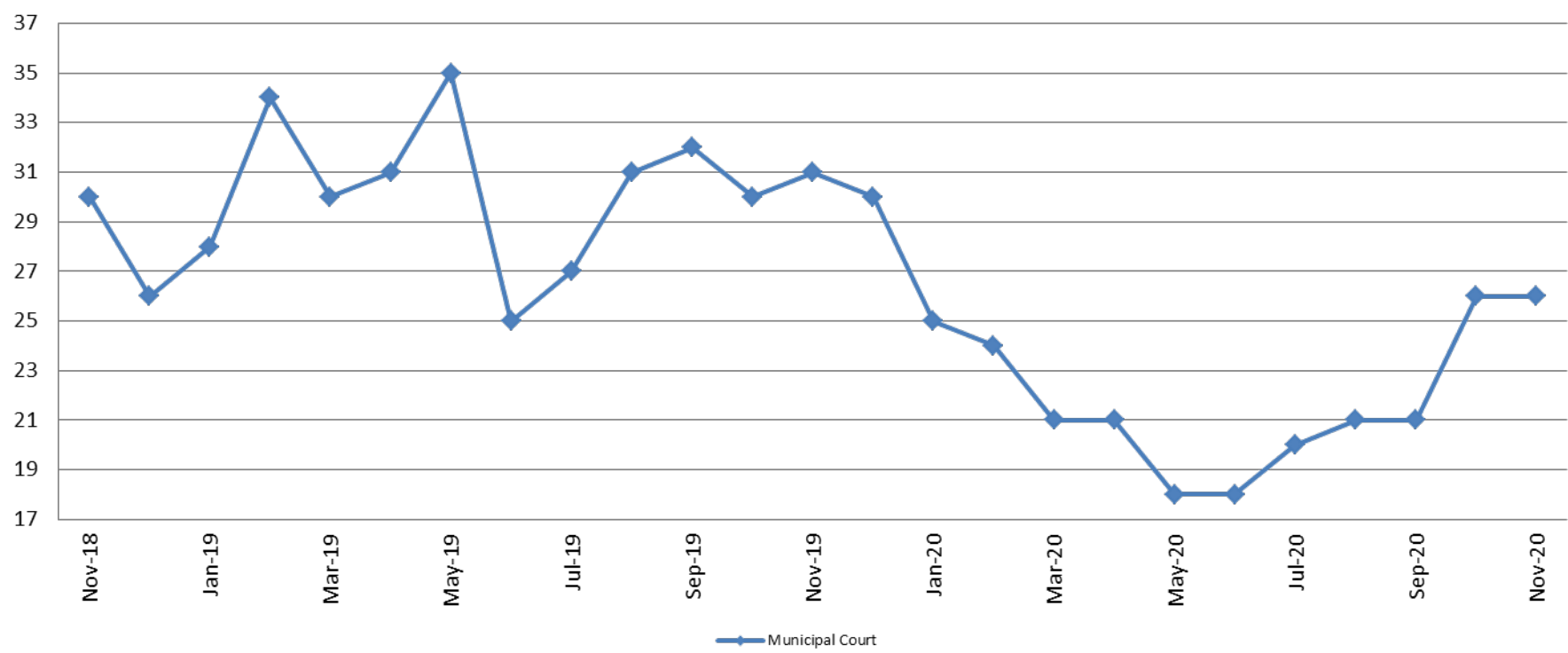
## Mental Health ADP Year over Year - November



November	2018 ADP	2019 ADP	2020 ADP	2018 YTD Avg.	2019 YTD Avg.	2020 YTD Avg.
SCOAP	159	77	51	147	100	63
MH Court	87	81	64	97	95	75



## Day Reporting - Active Caseload November 2018 - present



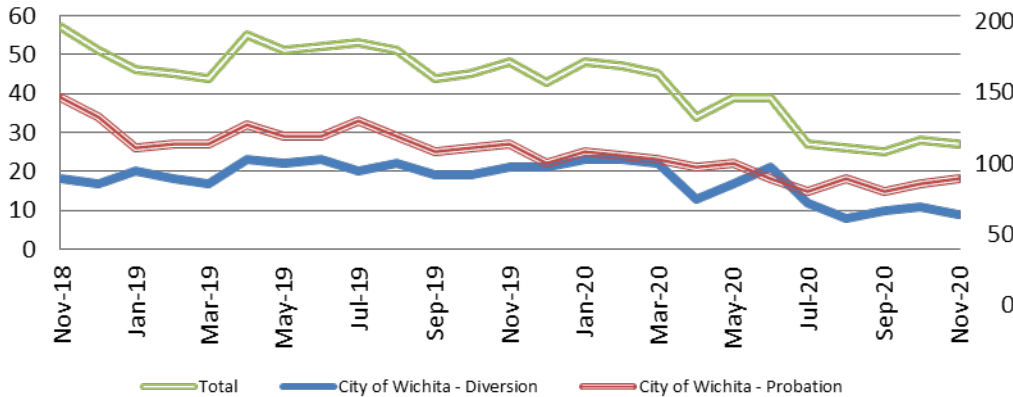
<b>November</b>	<b>2015</b>	<b>2016</b>	<b>2017</b>	<b>2018</b>	<b>2019</b>	<b>2020</b>
Muni. Court	59	28	36	30	31	26
Muni. Court YTD Avg.	68	40	36	34	30	22



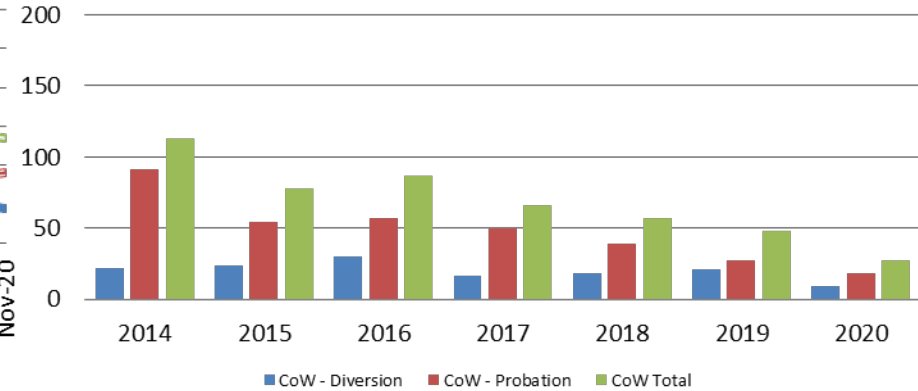
\*District Court funding ended on 6/30/2016  
(data obtained from DRC)



## Drug Court - City of Wichita ADP: November 2018 - present



## Drug Court- City of Wichita Year over Year - November

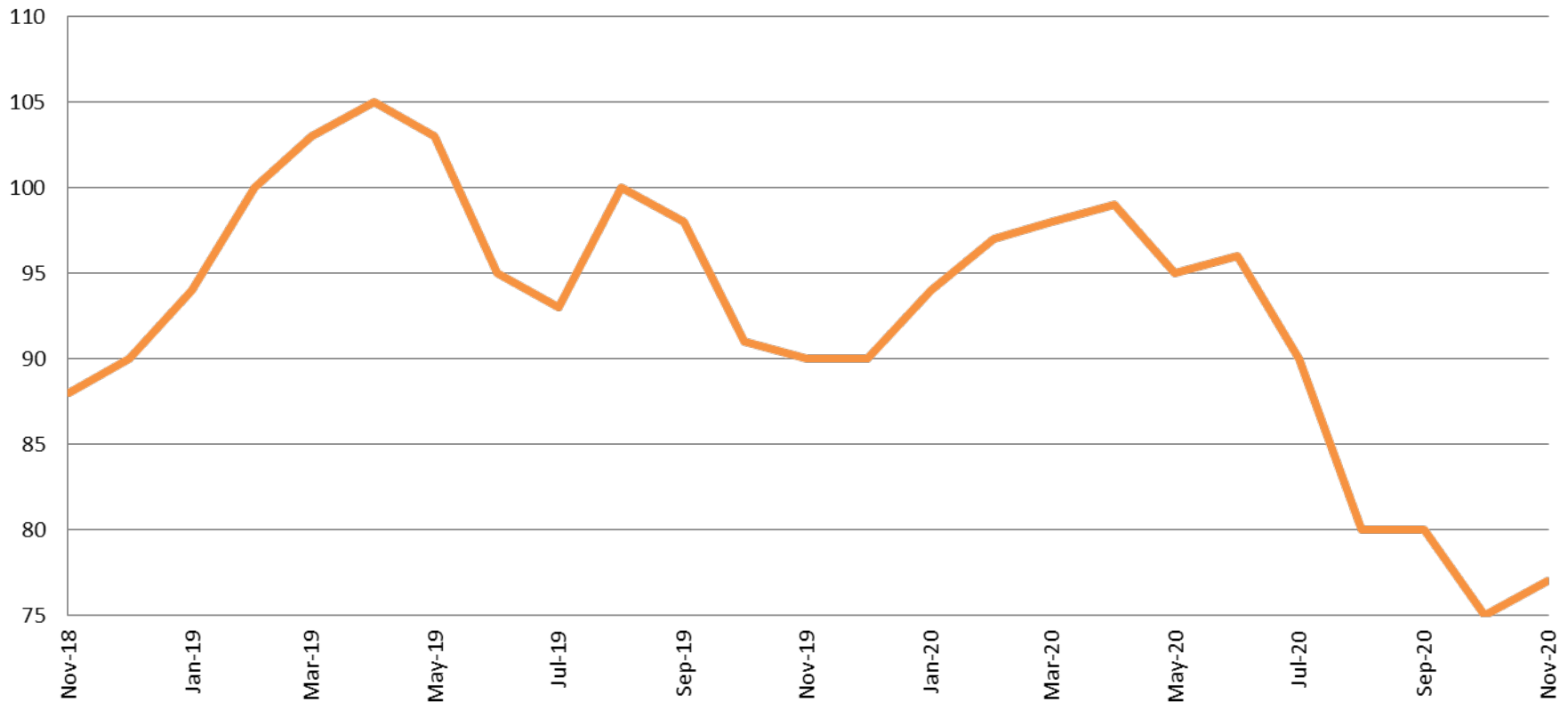


November	2018	2019	2020
Diversion	18	21	9
Probation	39	27	18
Total	57	48	27





## Drug Court - Sedgwick County ADP: November 2018 - present

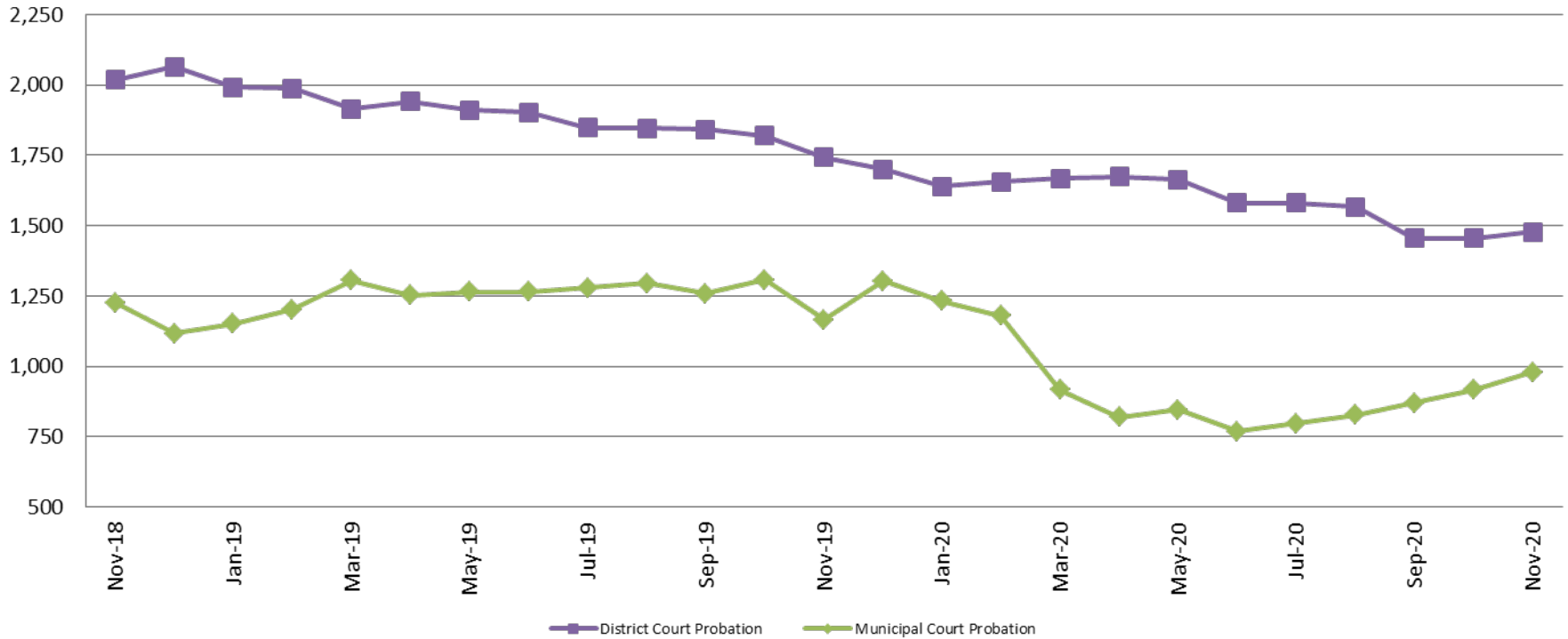


	<b>November</b>	<b>2018</b>	<b>2019</b>	<b>2020</b>
Sedg. Co. ADP		88	90	77
YTD Avg.		85	97	89





## Probation - Active Caseloads November 2018 - present

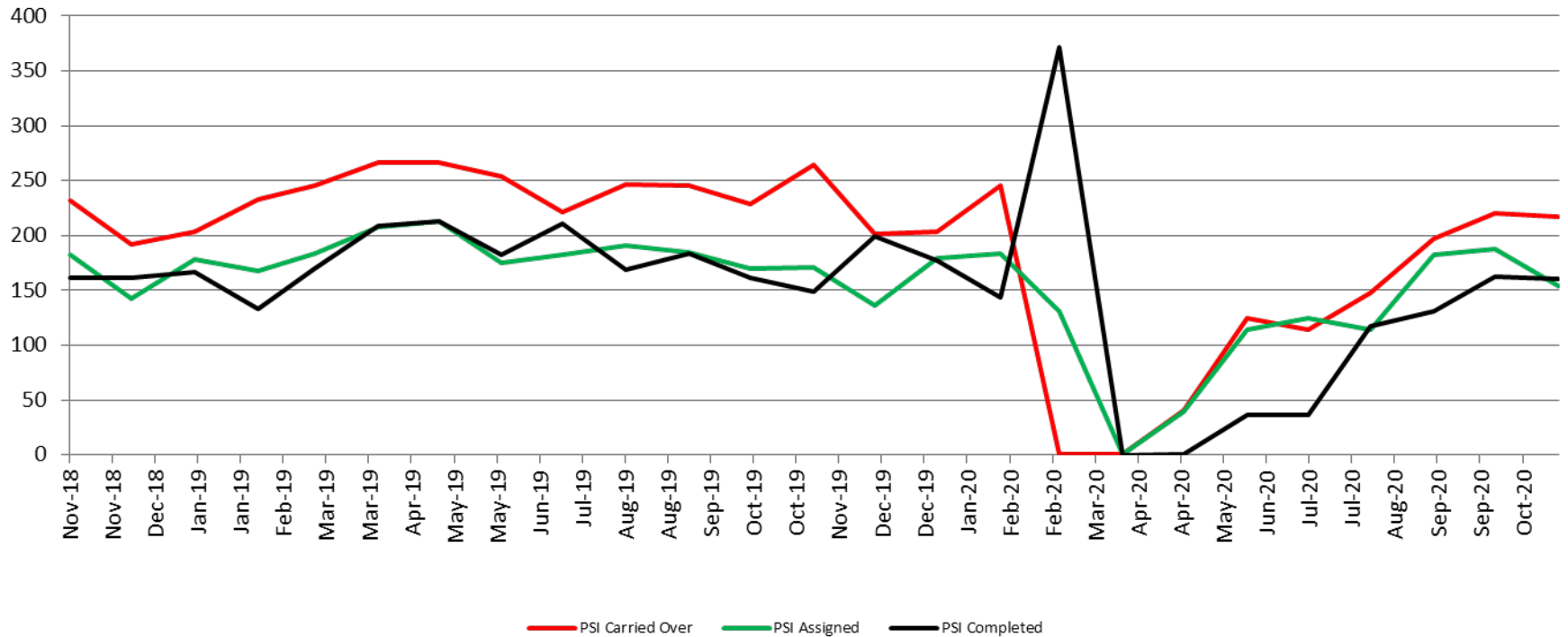


November	2018	2019	2020	2018 YTD Avg.	2019 YTD Avg.	2020 YTD Avg.
Dist. Court Probation	2,018	1,743	1,478	2,096	1,886	1,583
Muni. Court Probation	1,226	1,165	980	1,215	1,250	923



# District Court Probation: Pre-Sentence Investigation

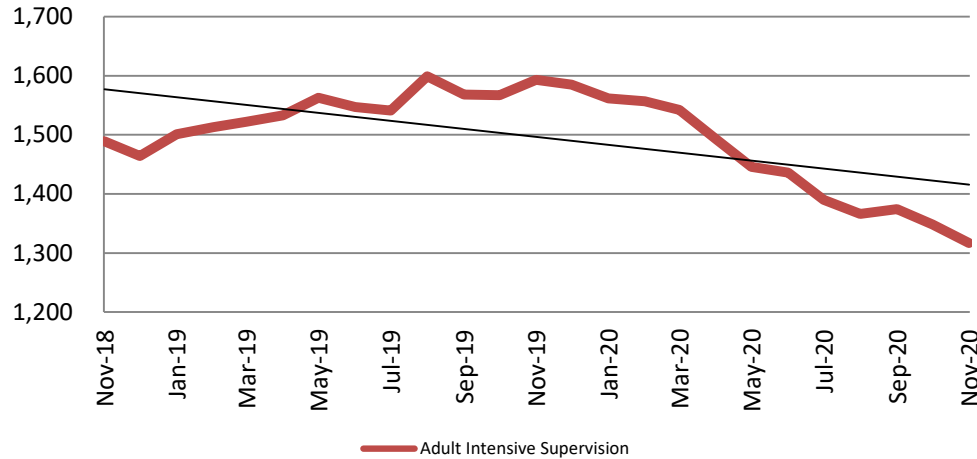
## November 2018 - present



<b>November</b>	<b>2018</b>	<b>2019</b>	<b>2020</b>
Carried Over	232	264	217
Assigned	182	171	154
Completed	162	149	160

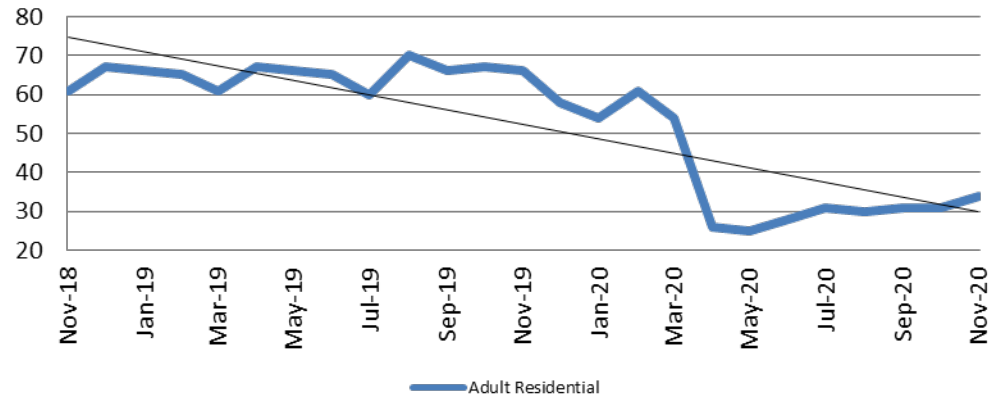
# Community Corrections

**Adult Intensive Supervision Probation (AISP):  
ADP November 2018- present**



Year	November	November YTD Avg.
2018	1,489	1,473
2019	1,593	1,550
2020	1,317	1,439

**Adult Residential: ADP  
November 2018 - present**

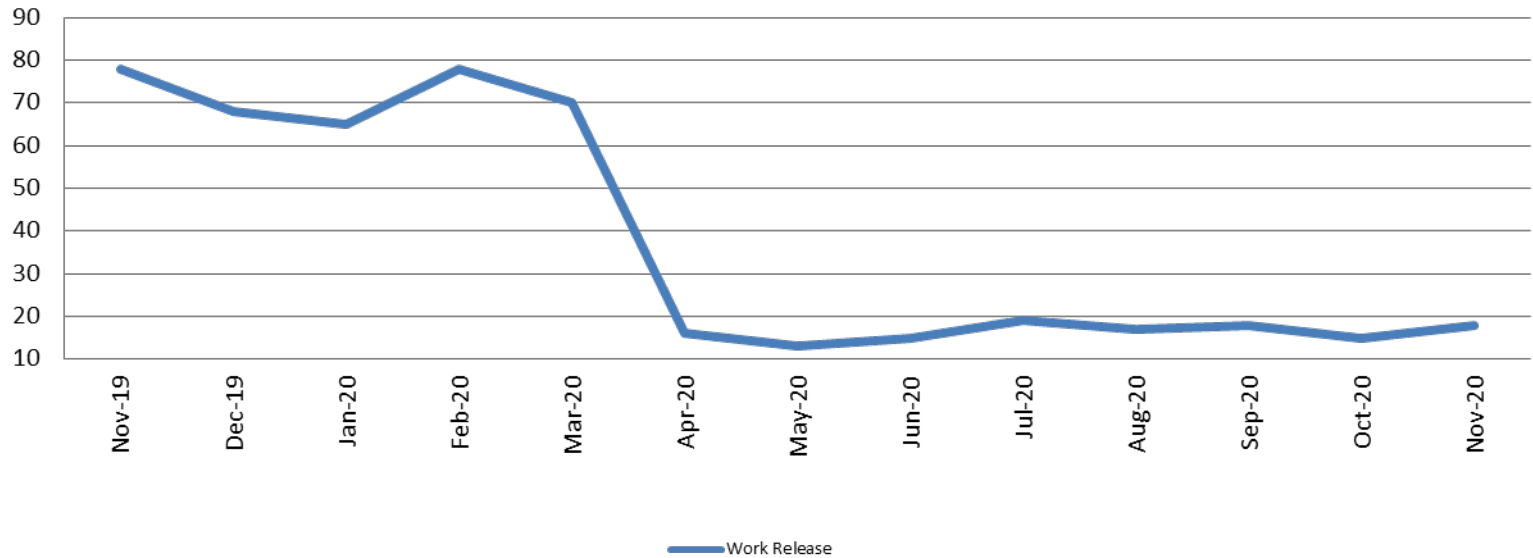


Year	November	November YTD Avg.
2018	61	58
2019	66	65
2020	34	37



# Community Corrections

## Work Release: ADP November 2019 - present

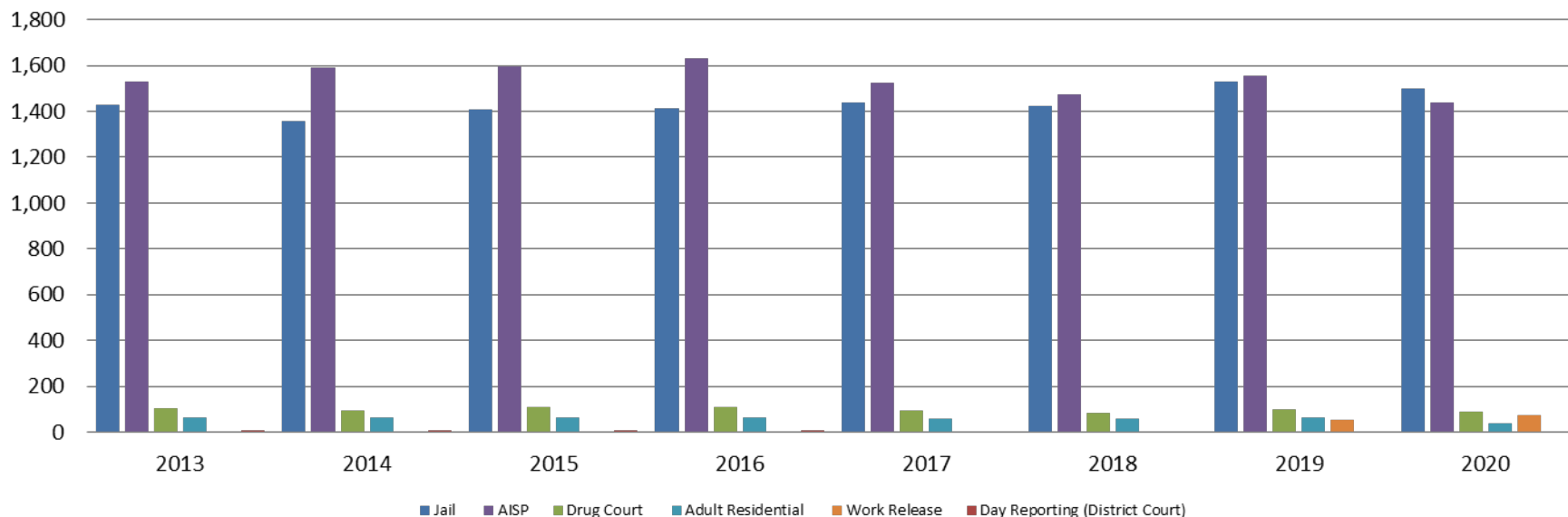


Month Year	Total	YTD Avg.
November 2019	78	71
November 2020	18	31



# Correlation: Total & Sedgwick County Programs (Adult)

## Total Annual ADP 2013 - present

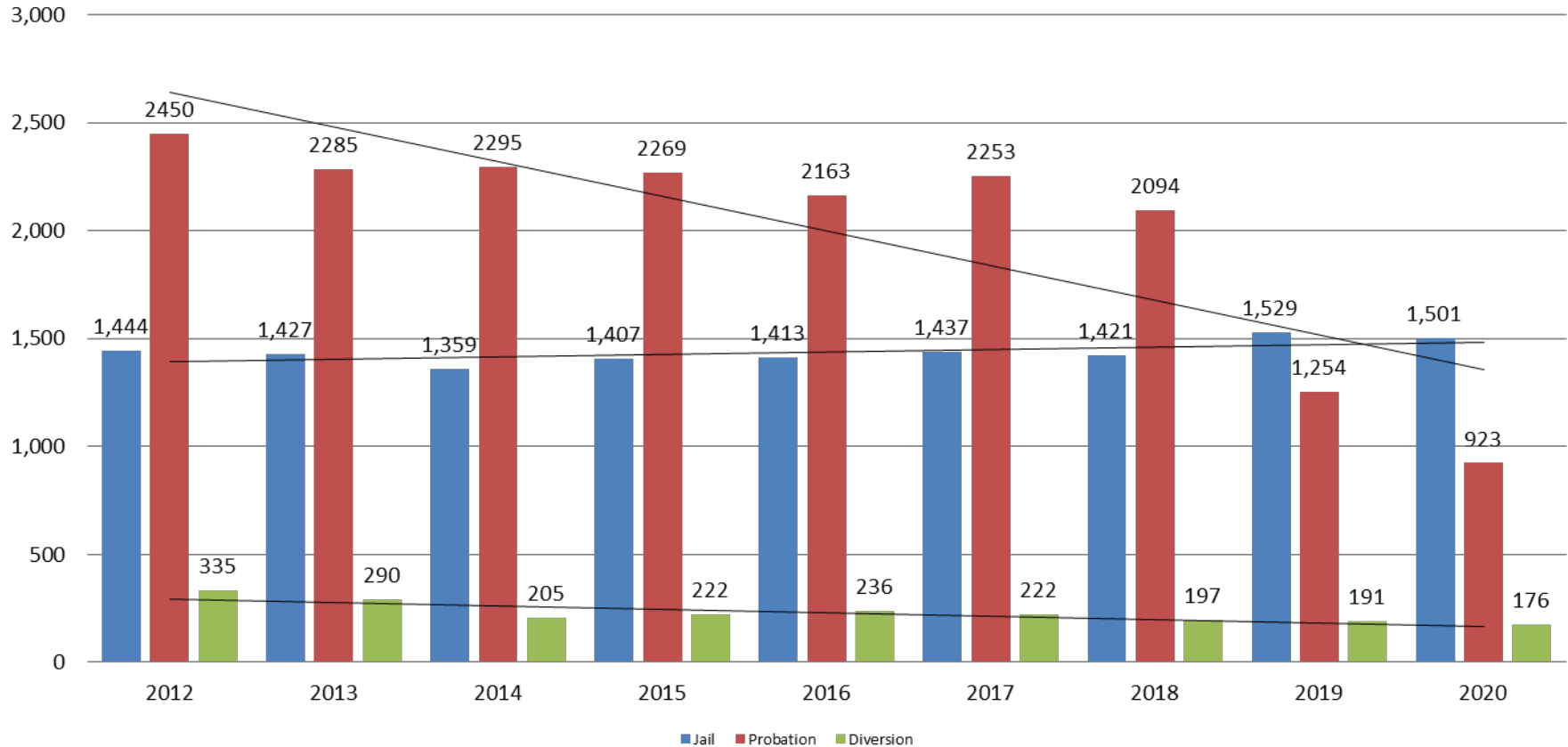


	2018	2019	2020
Jail	1,424	1,529	1,501
AISP	1,472	1,553	1,439
Drug Court	85	97	89
Adult Residential	59	65	37
Work Release	55	71	31
Day Reporting (DC)	0	0	0



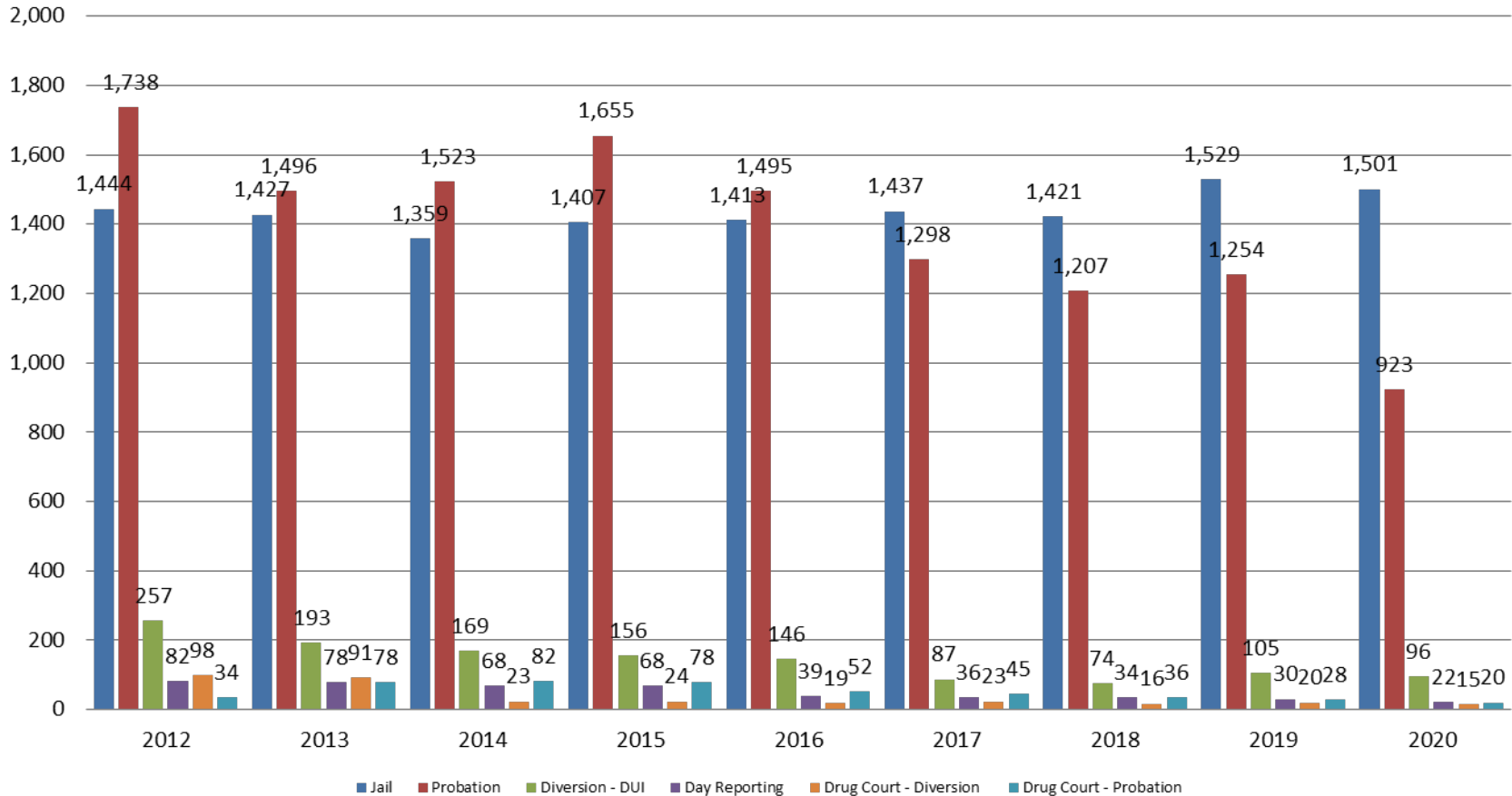
# Correlation: Total & District Court Programs

## Total Annual ADP: 2012 - present



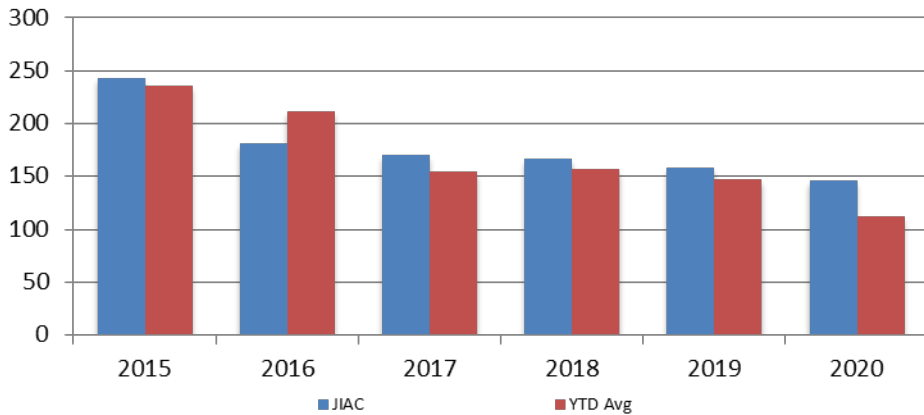
# Correlation: Total & City of Wichita / Municipal Court Programs

**Total Annual ADP: 2012 - present**



# Juvenile

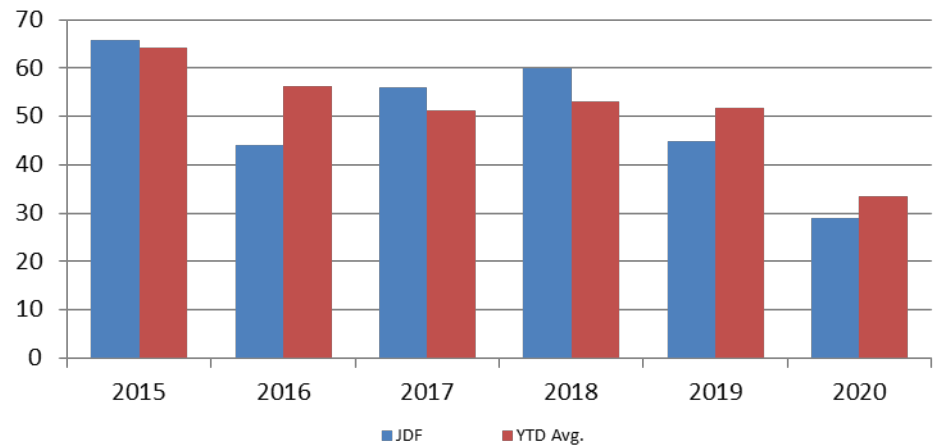
**Jiac Intakes  
November 2015 - present**



Year	November	November YTD Avg.
2015	242	235
2016	180	211
2017	169	153
2018	166	156
2019	157	146
2020	145	112

Year	November	November YTD Avg.
2015	66	64
2016	44	56
2017	56	51
2018	60	53
2019	45	52
2020	29	33

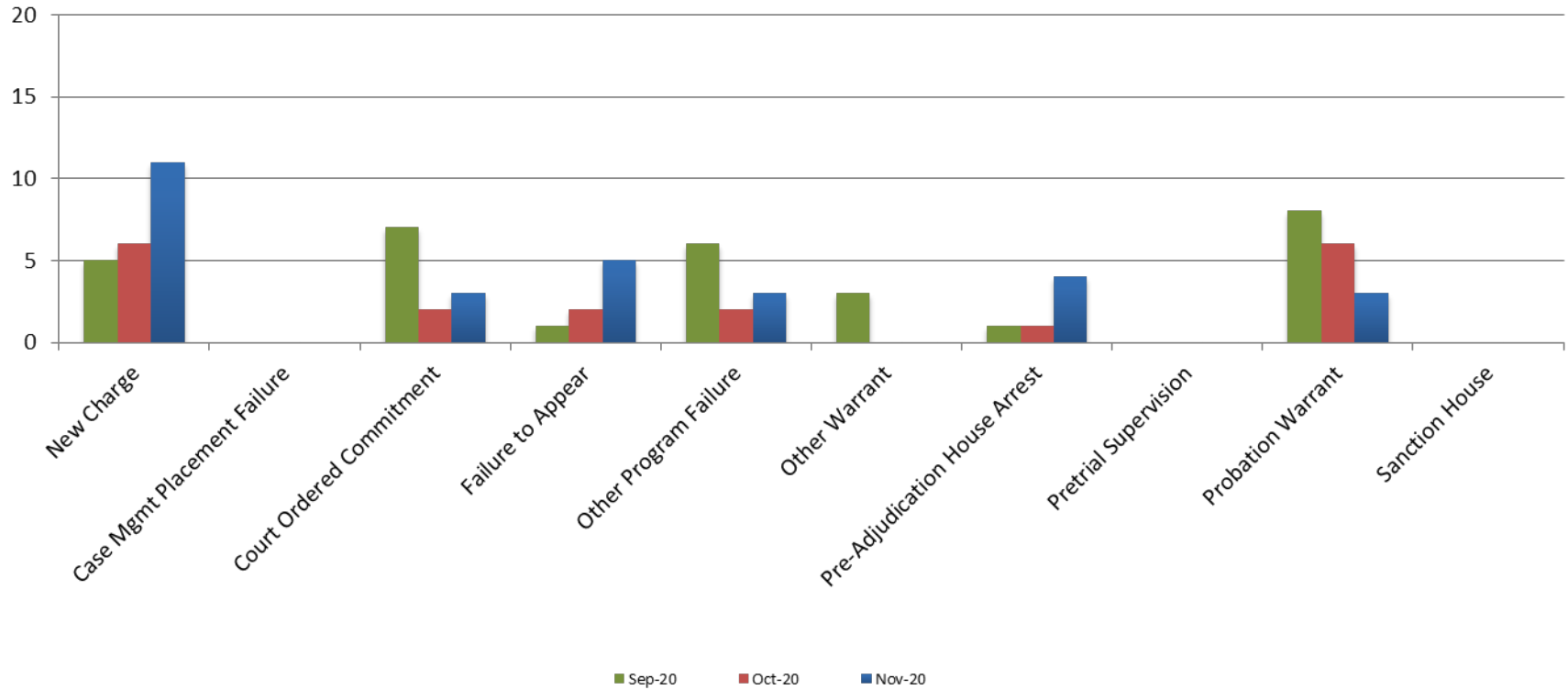
**JDF ADP  
November 2015 - present**







# Reason for JDF Admits





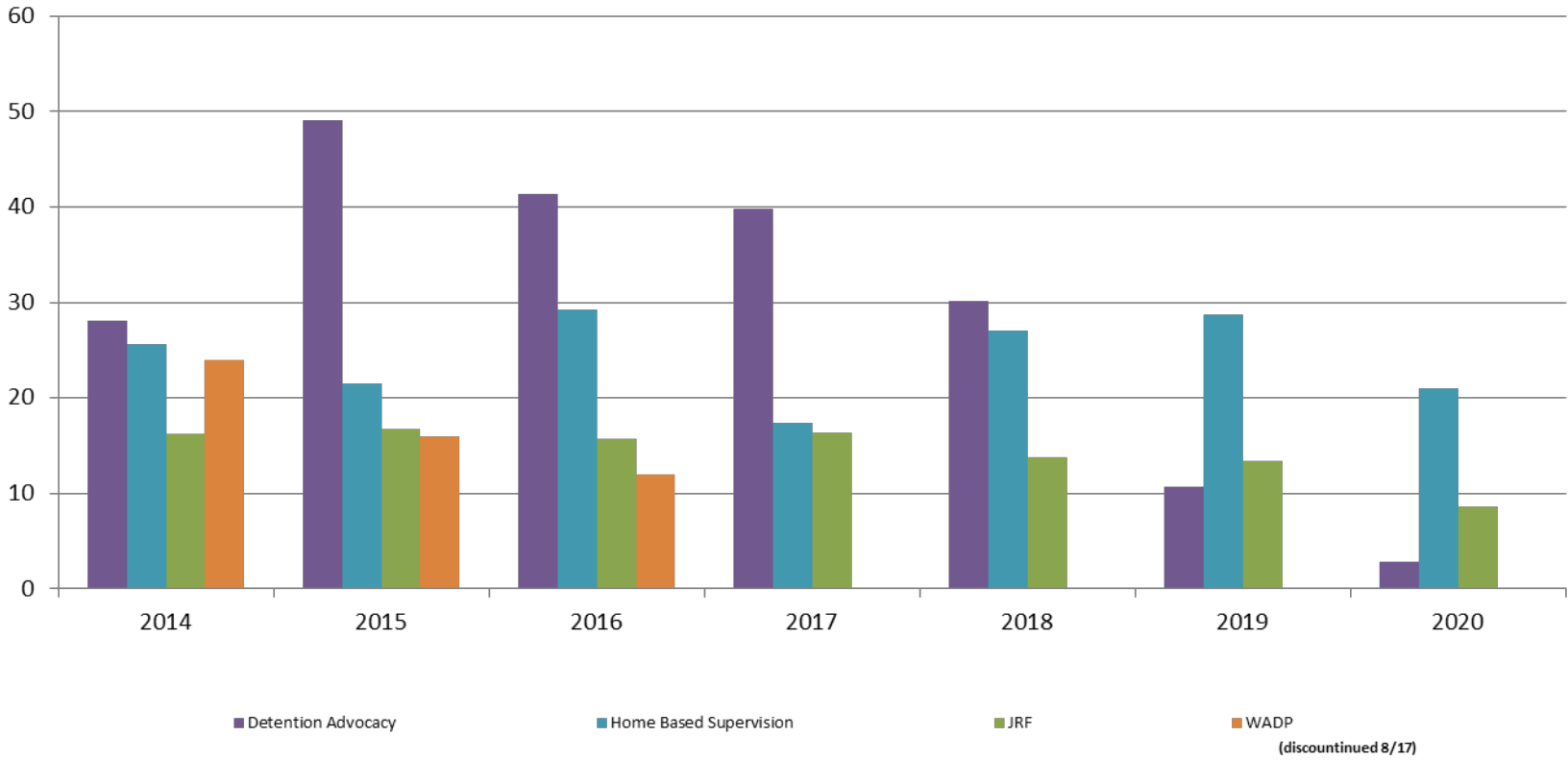
# Reason for JDF Admits

Reason	November 2019	November 2020
New Charges	10	11
Case Management Placement Failures	0	0
Court Ordered Commitment	5	3
Failure to Appear	4	5
Other Program Failure	2	3
Other Warrant	6	0
Pre-Adjudication House Arrest	4	4
Pretrial Supervision	0	0
Probation Warrant	13	3
Sanction House	1	0



# Juvenile Detention Alternatives

ADP: November 2014 - present



# Juvenile Detention Services

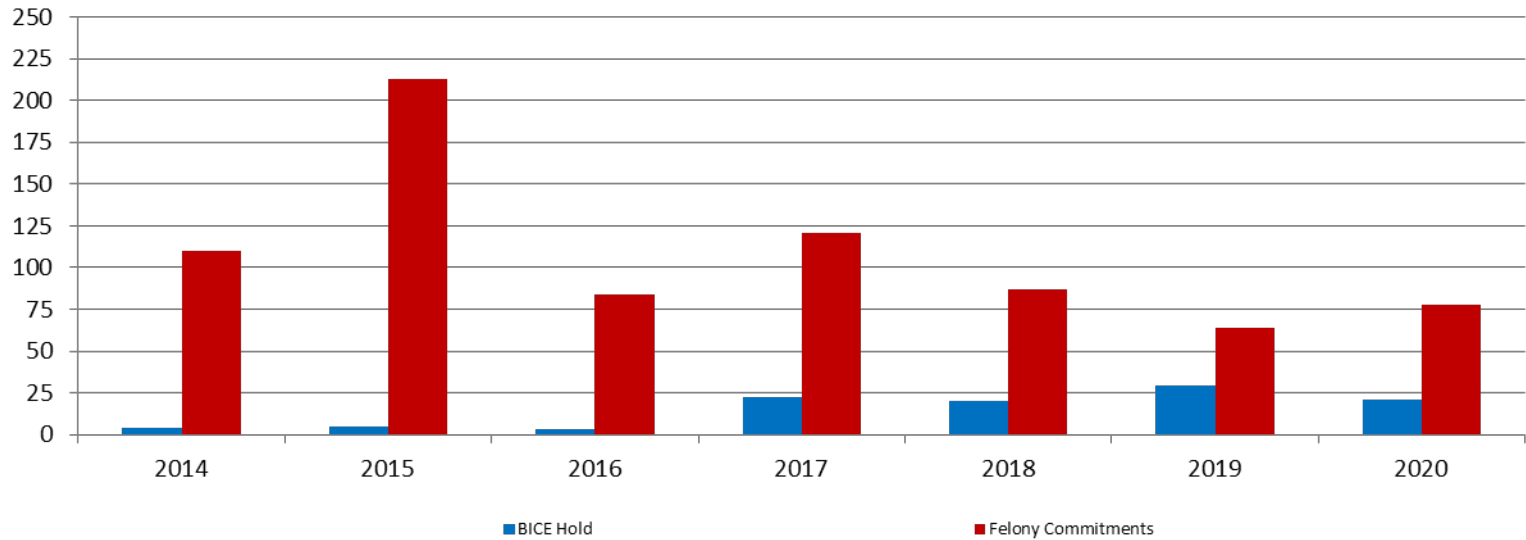
<b>November ADP</b>	<b>2017</b>	<b>2018</b>	<b>2019</b>	<b>2020</b>
Juvenile Detention Facility	56	60	45	29
Juvenile Residential Facility	16	14	13	9
Home Based Supervision	17	27	29	21
Detention Advocacy Case Management Services	40	30	11	3
Weekend Alternative Detention Program (total)	0	0	N/A	N/A

<b>November YTD AVERAGE</b>	<b>2017</b>	<b>2018</b>	<b>2019</b>	<b>2020</b>
Juvenile Detention Facility	51	53	52	33
Juvenile Residential Facility	16	14	14	16
Home Based Supervision	21	25	27	28
Detention Advocacy Case Management Services	38	32	19	8
Weekend Alternative Detention Program	11	0	N/A	N/A



# Monthly Jail Snapshot: June 30, 2020

## Snapshots November 2014 - present



<b>BICE Hold</b>	<b>2014</b>	<b>2015</b>	<b>2016</b>	<b>2017</b>	<b>2018</b>	<b>2019</b>	<b>2020</b>
<b>November</b>	4	5	3	22	20	29	21

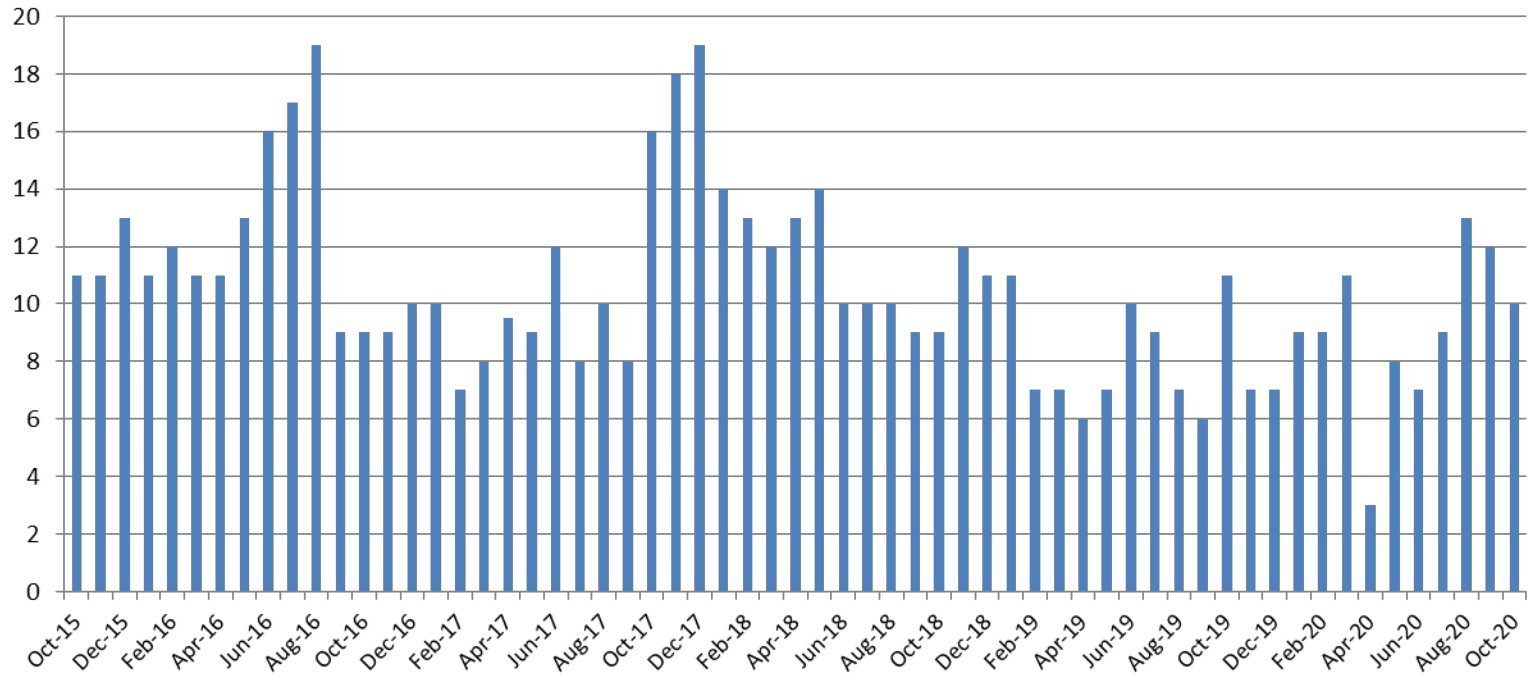
  

<b>Felony Commitments</b>	<b>2014</b>	<b>2015</b>	<b>2016</b>	<b>2017</b>	<b>2018</b>	<b>2019</b>	<b>2020</b>
<b>November</b>	110	213	84	121	87	64	78





## Journal Entry Completion (Average Days) October 2015 - present



October	2015	2016	2017	2018	2019	2020
Avg. Days	11	9	16	9	11	10
YTD Avg.	9	13	10	11.4	8.1	9

