

Criminal Justice Coordinating Council

Population Report & Program Trends

August 2021

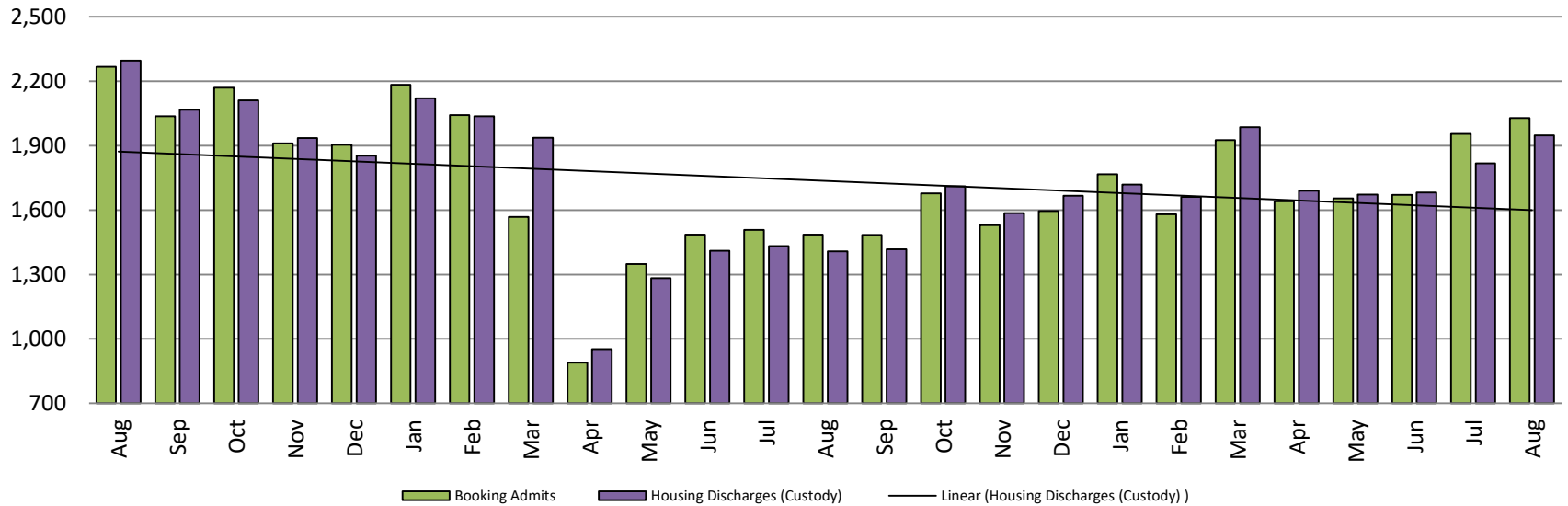


Sedgwick County...
working for you

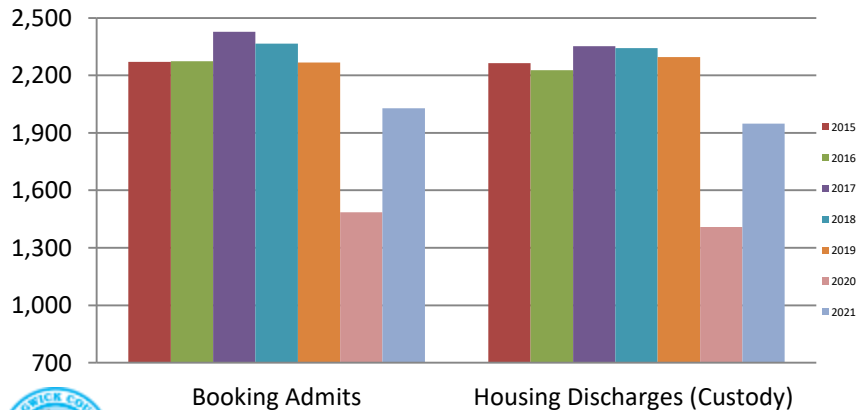
Detention Facility

Booking Admits & Housing Discharges from Custody

August 2019 - present



Bookings Year over Year: Month of August

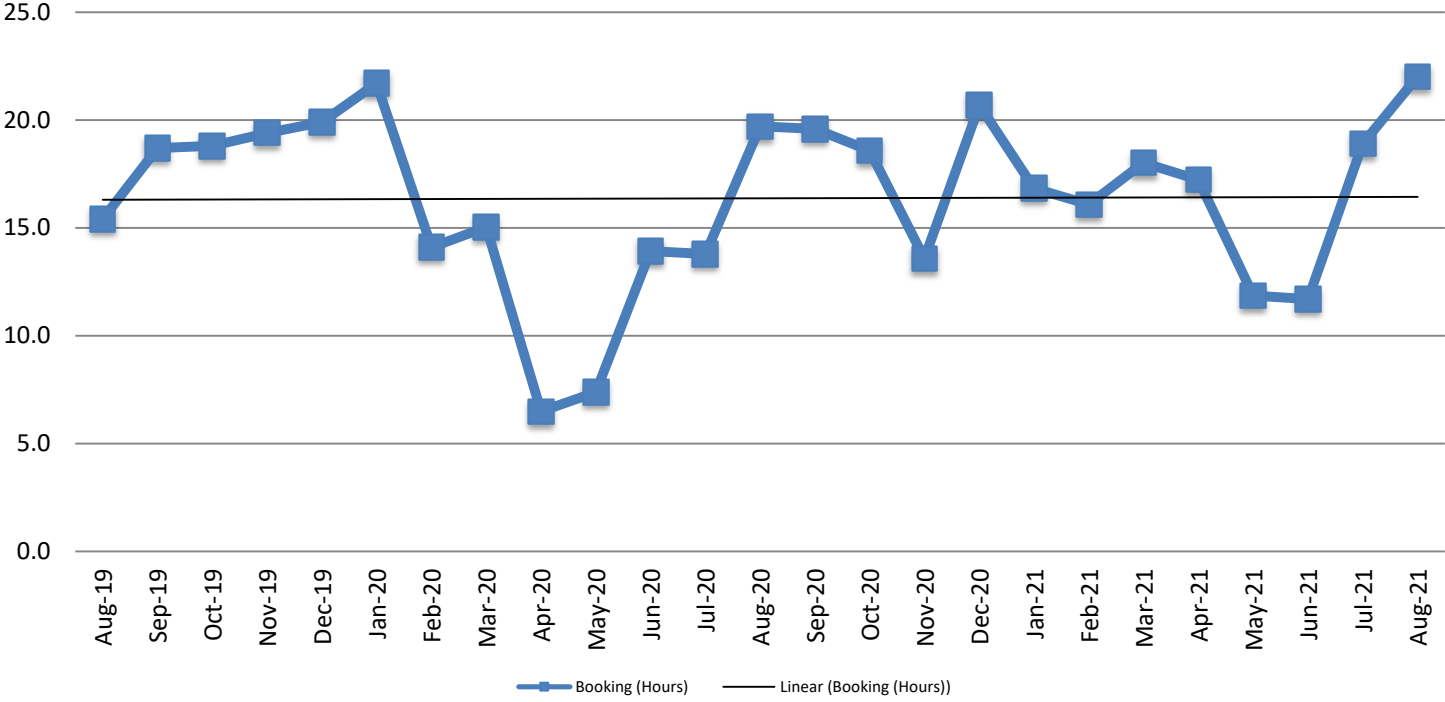


Bookings August	Housing Discharges August
2019: 2,267	2019: 2,296
2020: 1,486	2020: 1,408
2021: 2,029	2021: 1,948



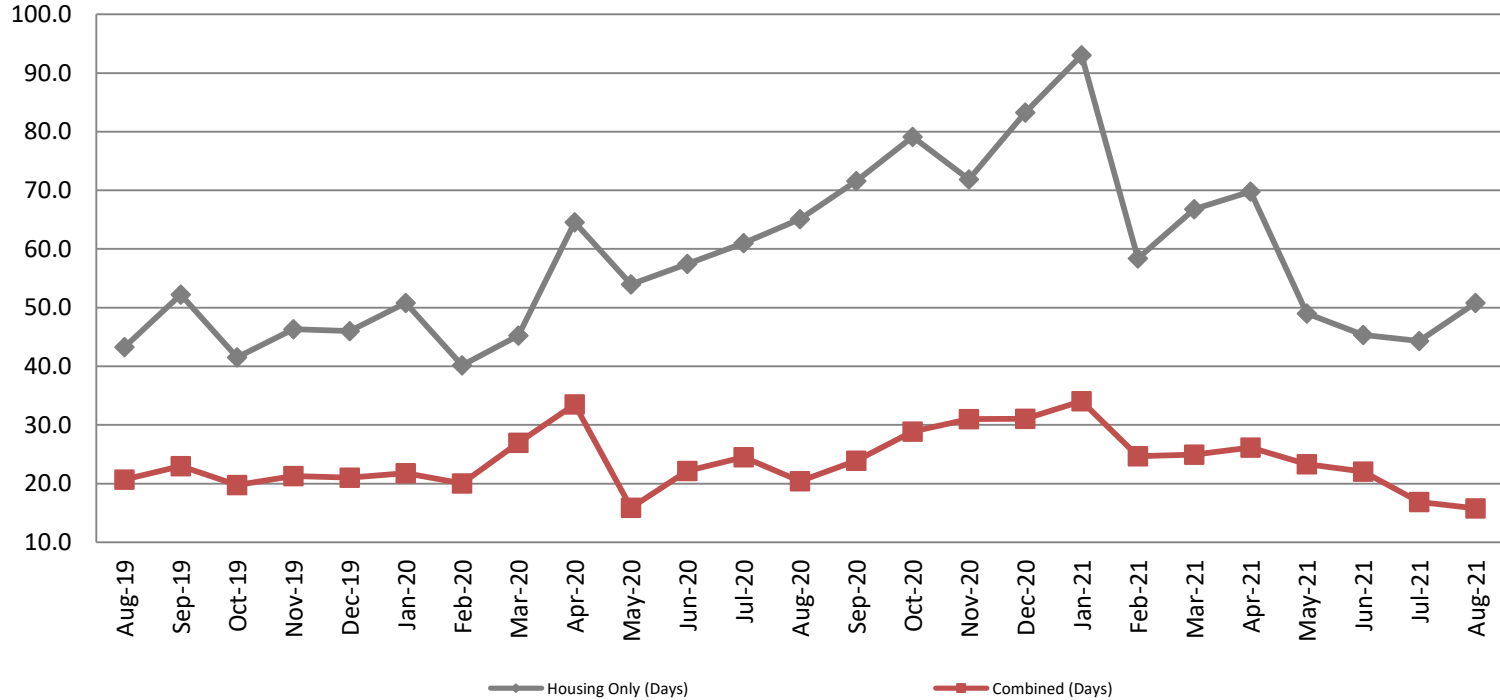
Average Length of Stay: Booking (Hours)

August 2019 - present



August	August YTD Average
2019: 15.4	2019: 13.7
2020: 19.7	2020: 14.0
2021: 22.0	2021: 16.6

Average Length of Stay: Housing & Combined (Days) August 2019 - present

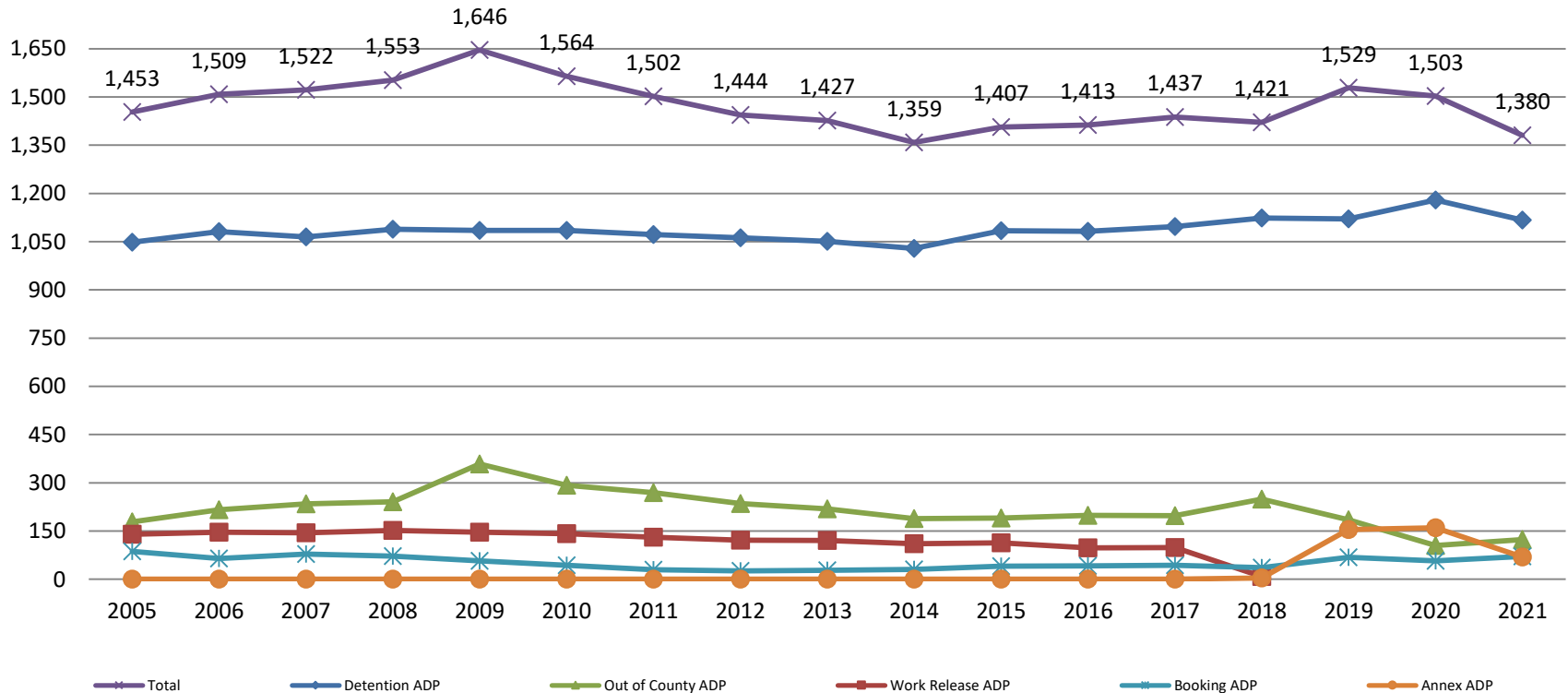


Month Year	Housing Only	Housing YTD AVG	Combined Days	Combined YTD AVG
August 2019	43.3	39.8	20.7	20.4
August 2020	65.1	54.8	20.4	23.2
August 2021	50.8	59.7	15.8	23.5

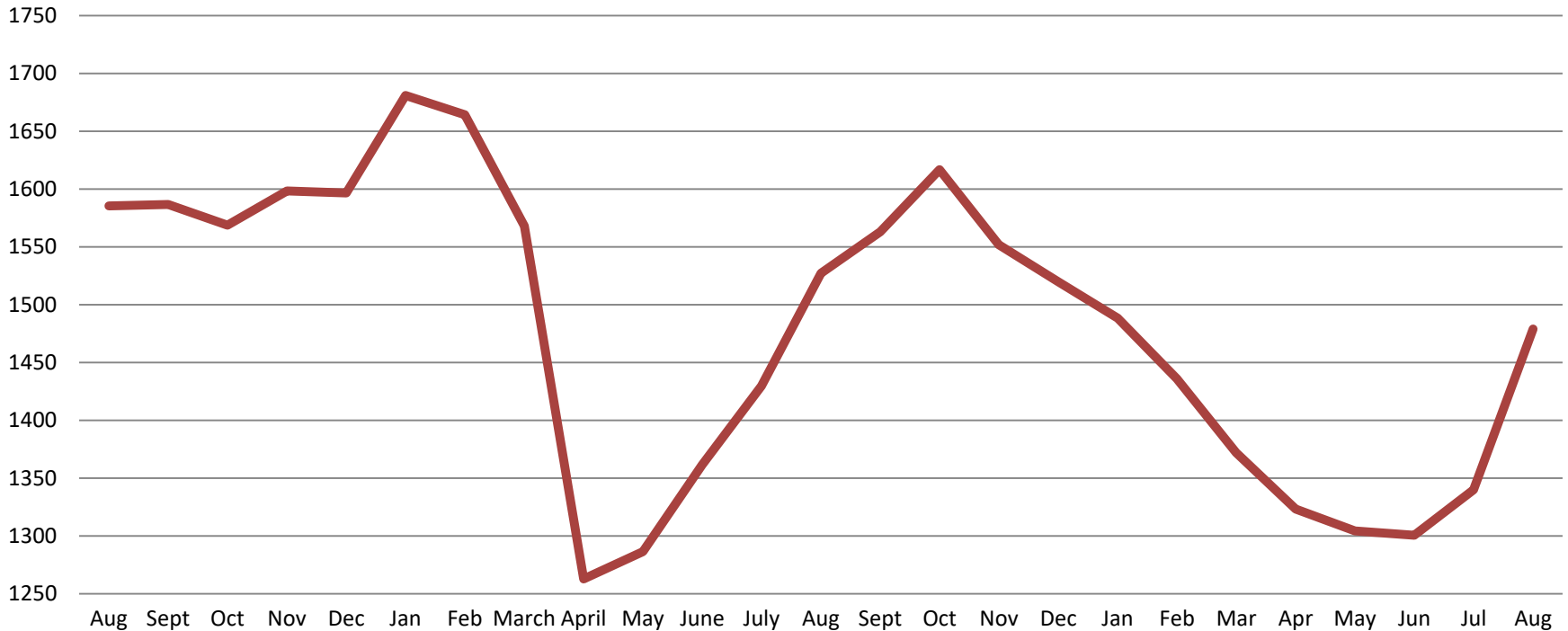


Jail: Annual Average Daily Population (ADP)

TRENDS: Booking, Detention, Work Release, & Out of County Annual ADP: 2005 - present



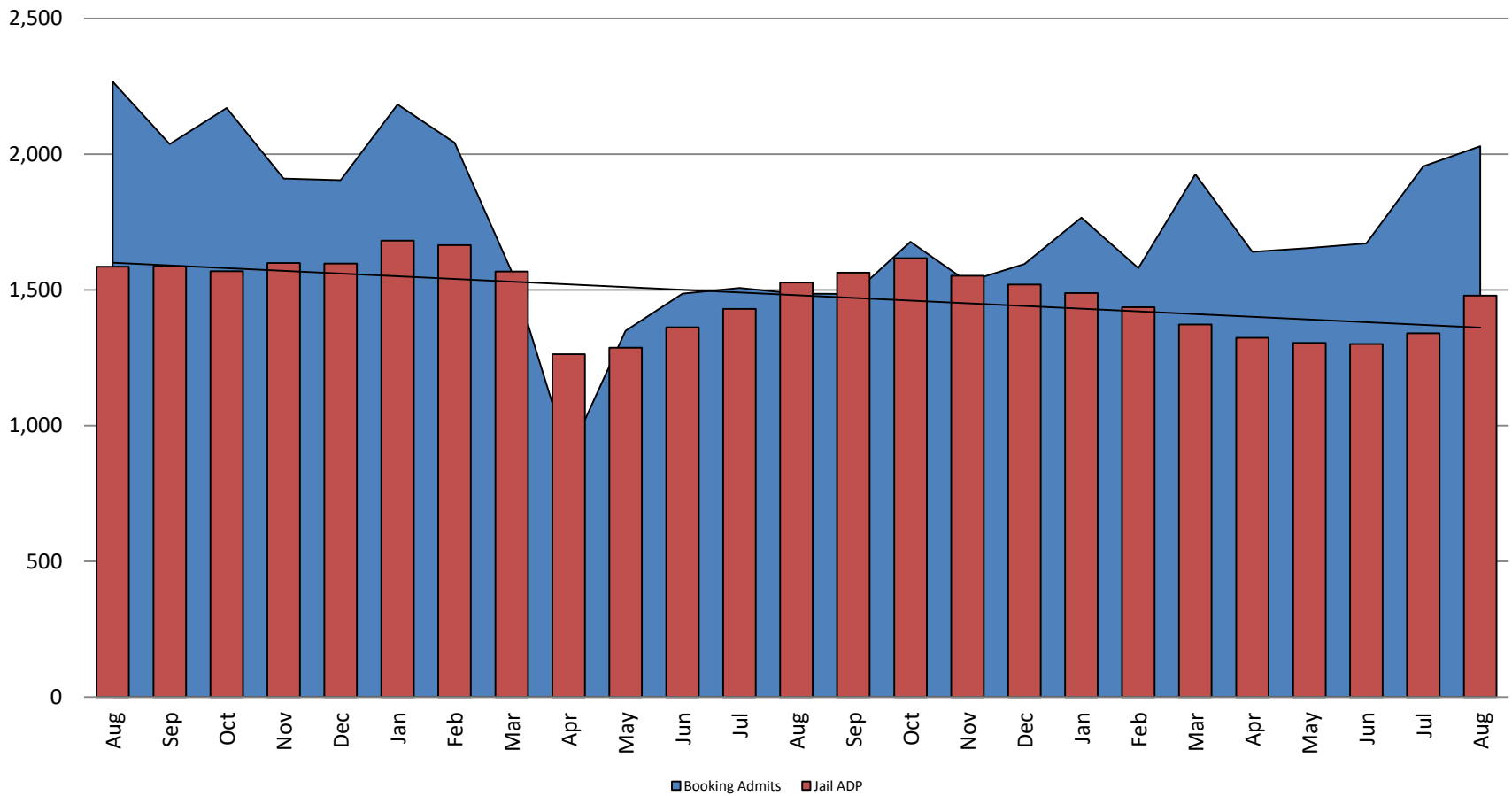
TOTAL MONTHLY ADP: JAIL (Booking, Detention Facility, Annex, & Out of County) August 2019 - present



August 2019	August 2020	August 2021
1,585	1,527	1,479

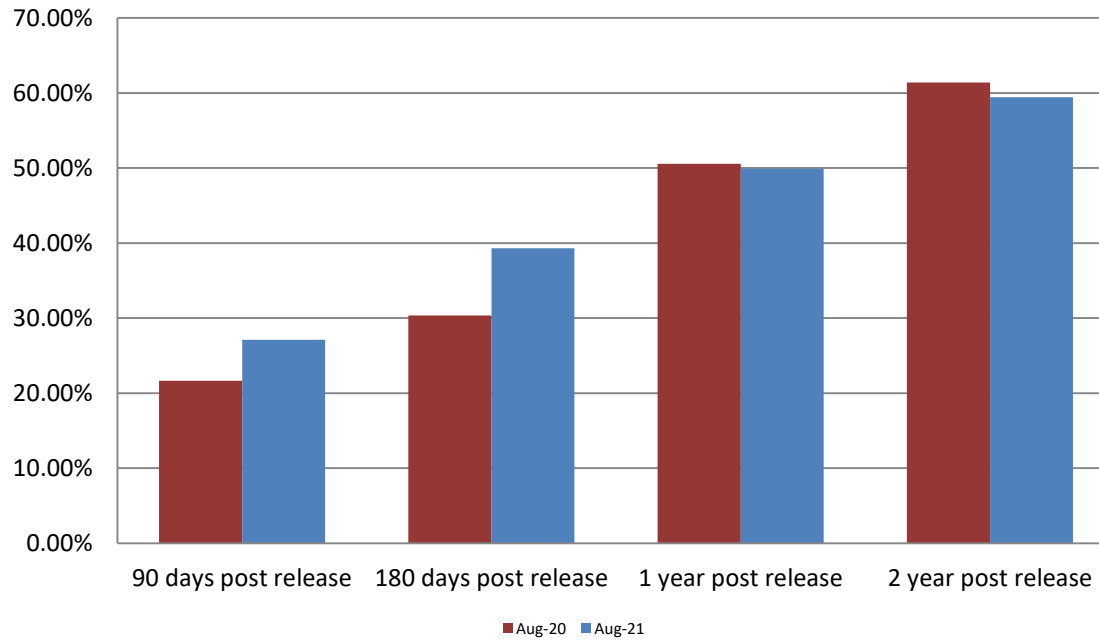


Booking Admits & Total Monthly ADP (Jail): August 2019 - present



Jail includes individuals in booking, detention, work release and out-of county (combined)
(data obtained from detention facility)

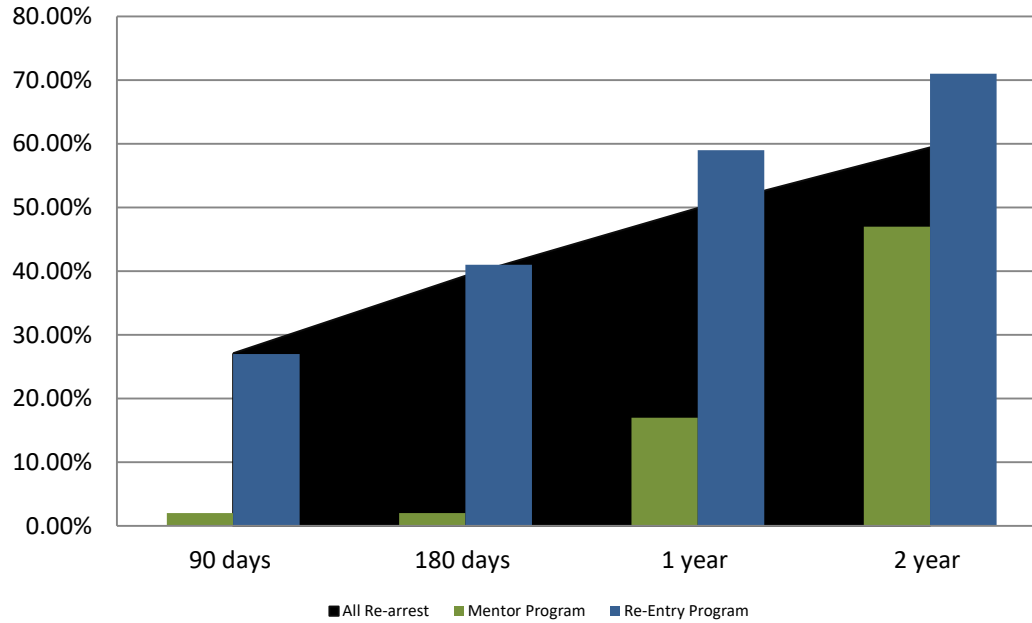
Percent of Released Inmates Rearrested August



Month Year	90 Days	180 Days	1 Year	2 Years
August 2020	21.64%	30.33%	50.54%	61.41%
August 2021	27.11%	39.29%	49.92%	59.45%



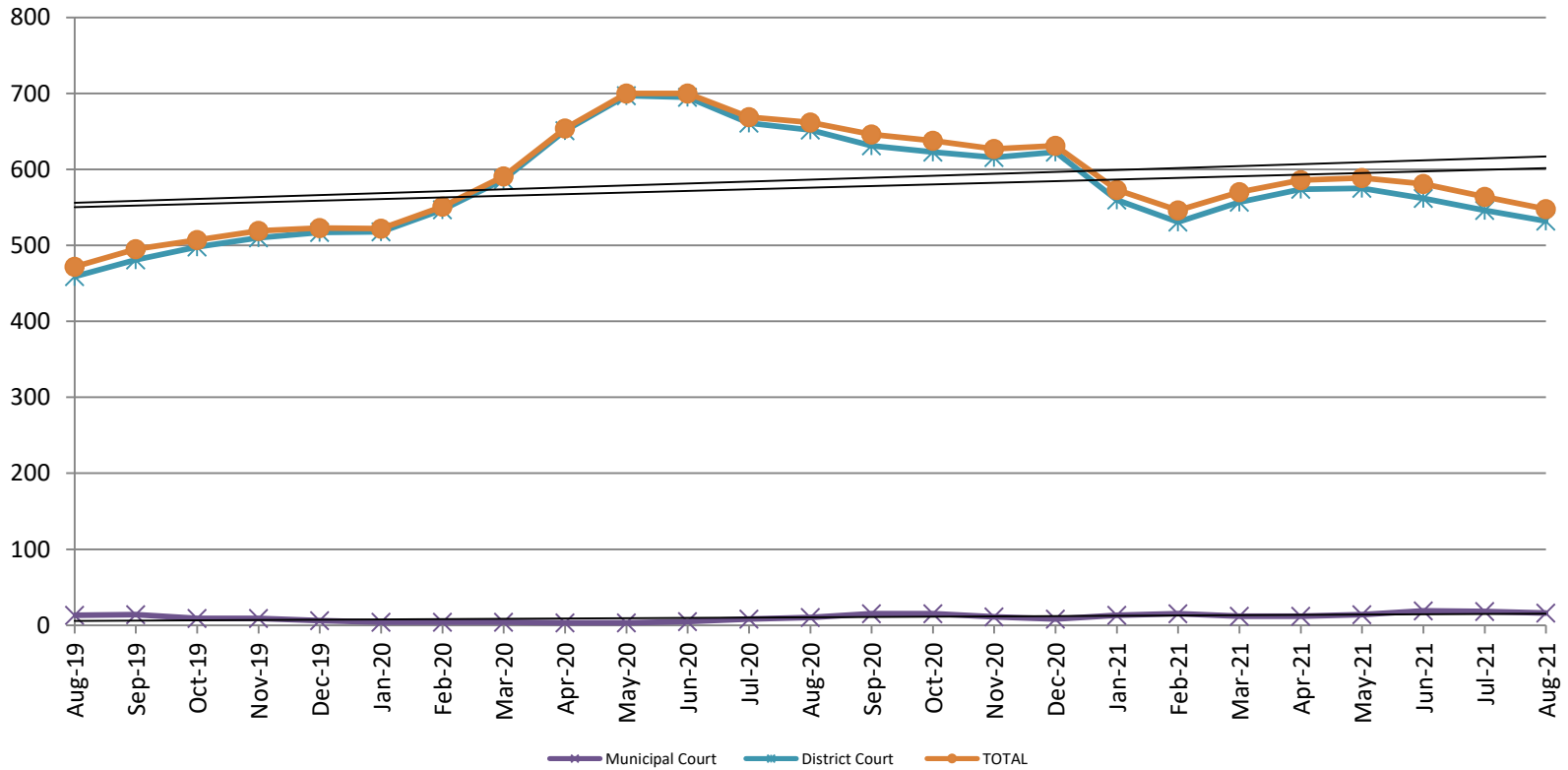
Recidivism by Programs August 2021



August 2021	90 Days	180 Days	1 year	2 years
All Re-arrests	27.11%	39.29%	49.92%	59.45%
Mentor Program	2%	2%	17%	47%
Re-Entry Program	27%	41%	59%	71%



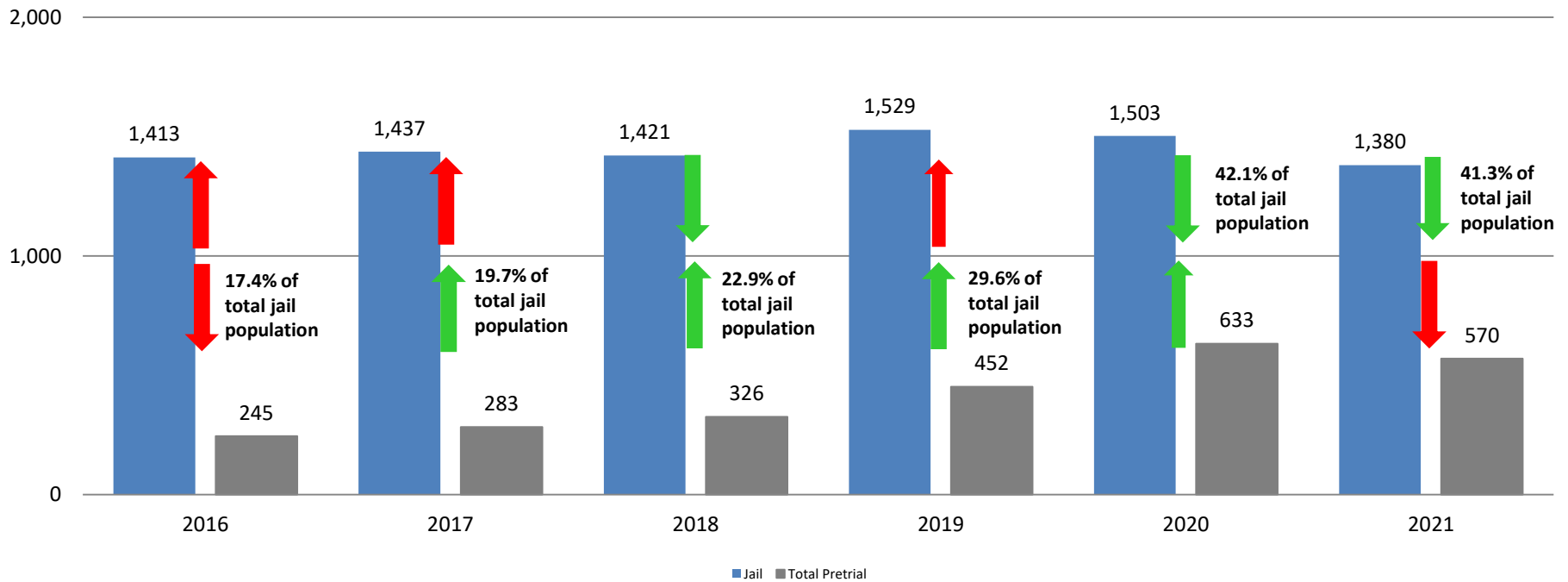
Pretrial Services Program (PSP) Monthly ADP: August 2019 - present



August	2019 ADP	2020 ADP	2021 ADP	2019 YTD Avg.	2020 YTD Avg.	2021 YTD Avg.
Muni. Court	13	10	16	13	5	14.9
Dist. Court	459	652	532	409	626	554.6
Total	472	662	548	423	631	569.6

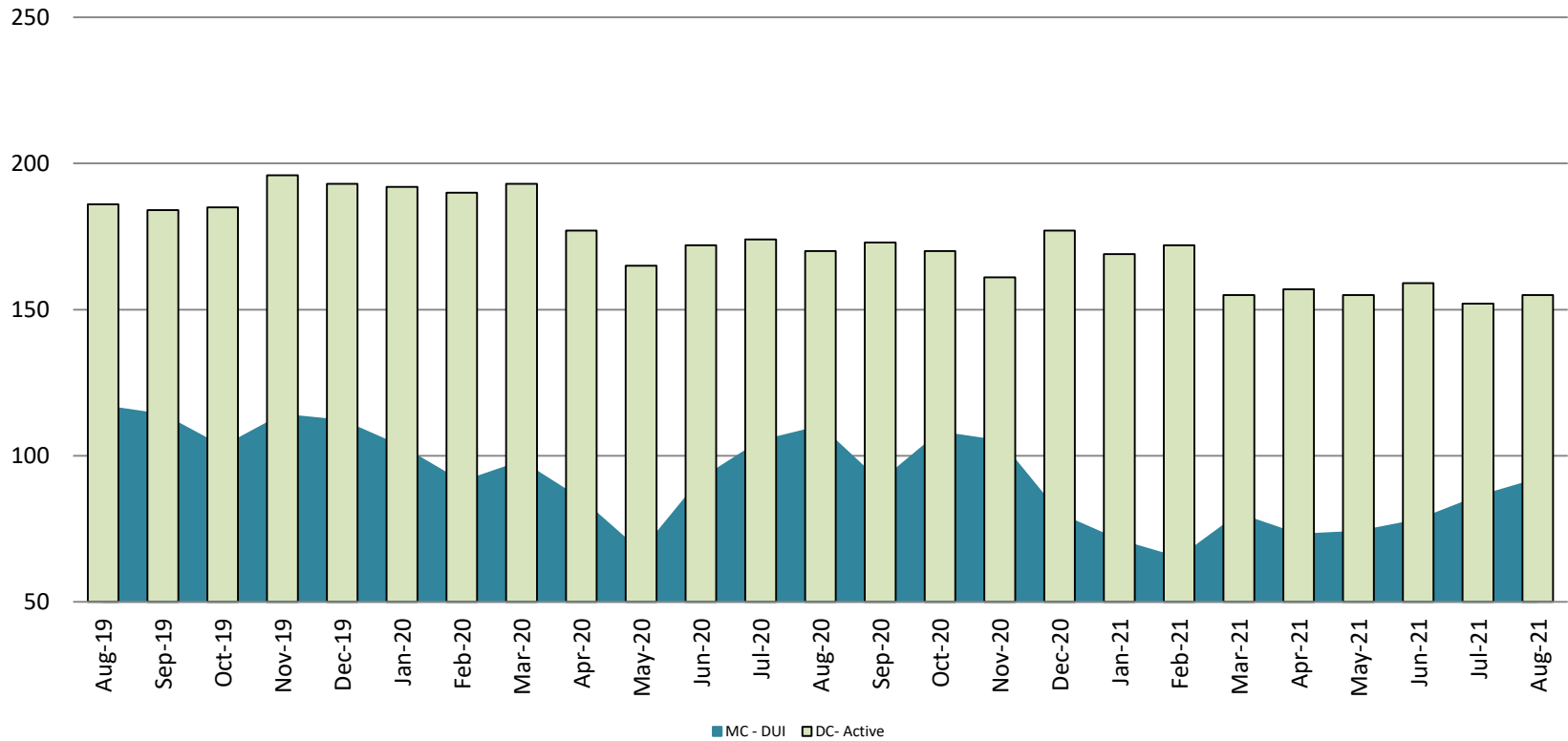
Correlation: Total & PSP

Total Annual ADP: 2016 - present



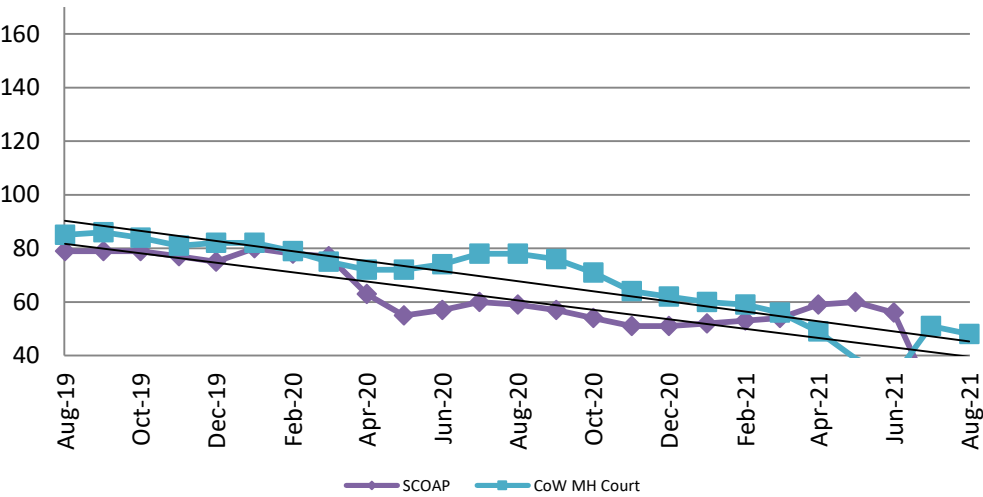
Diversion - Active Caseload

August 2019 - present

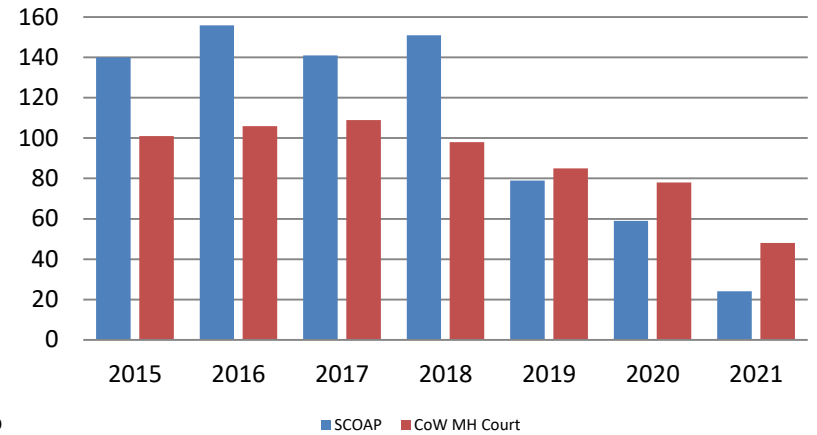


August	2019	2020	2021	2019 YTD Avg.	2020 YTD Avg.	2021 YTD Avg.
Muni. Court- DUI	117	110	92	102	94	77
Dist. Court- Active	186	170	155	191	179	159

Mental Health - ADP August 2019 - present

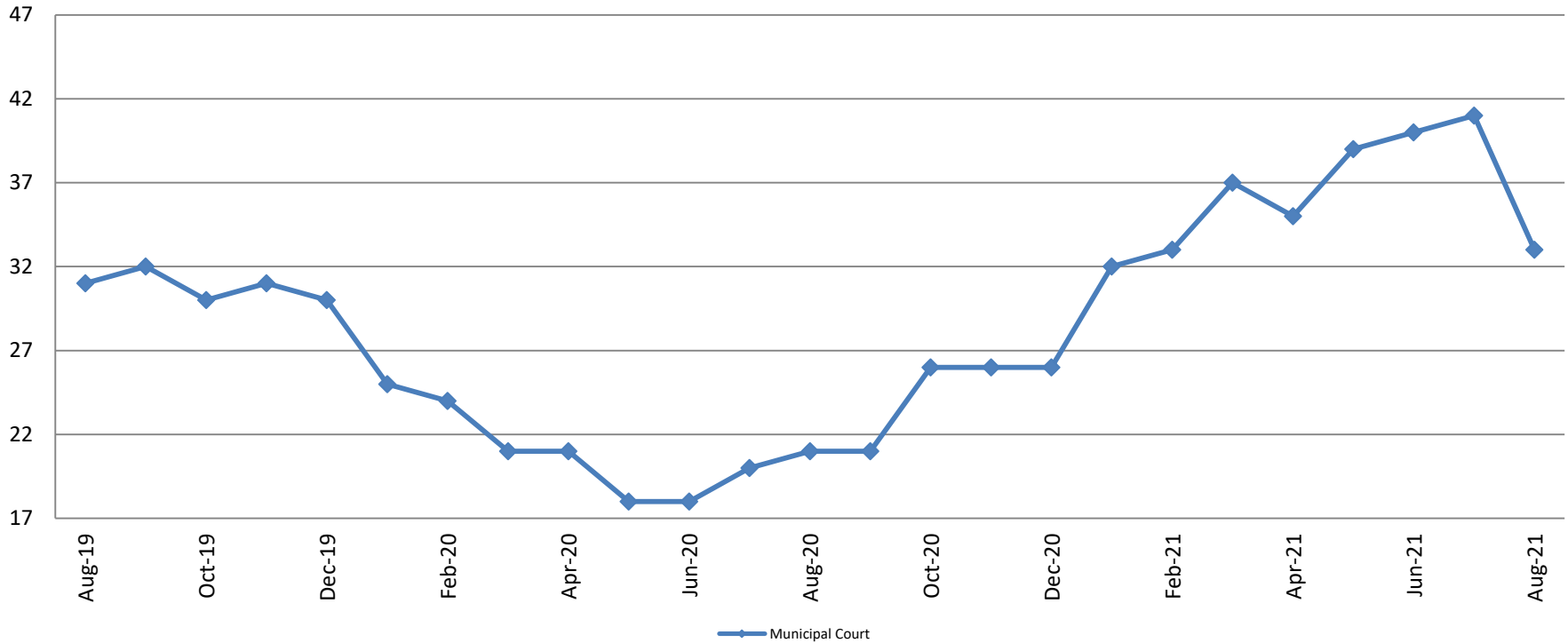


Mental Health ADP Year over Year - August



August	2019 ADP	2020 ADP	2021 ADP	2019 YTD Avg.	2020 YTD Avg.	2021 YTD Avg.
SCOAP	79	59	24	108	66	48
MH Court	85	78	48	99	76	49

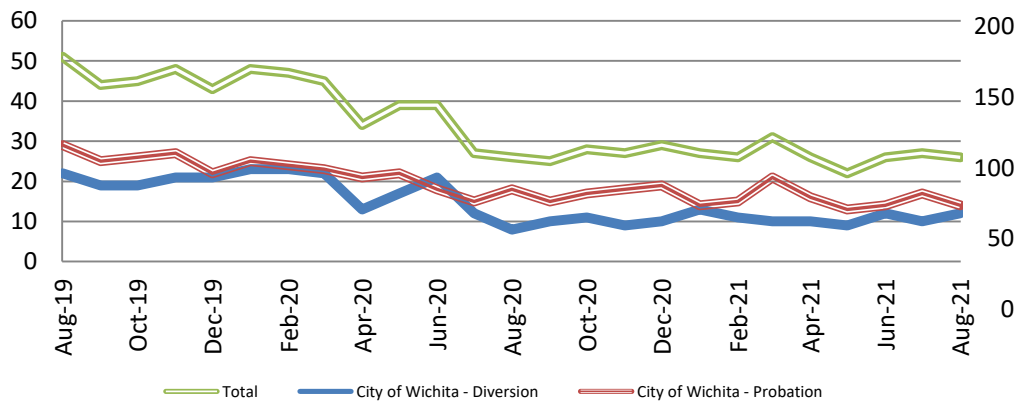
Day Reporting - Active Caseload August 2019 - present



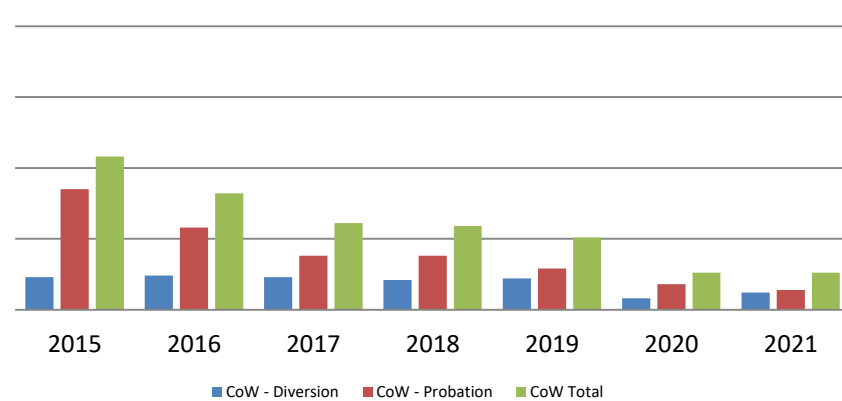
August	2016	2017	2018	2019	2020	2021
Muni. Court	31	40	33	31	21	33
Muni. Court YTD Avg.	44	35	35	30	21	36



Drug Court - City of Wichita ADP: August 2019 - present



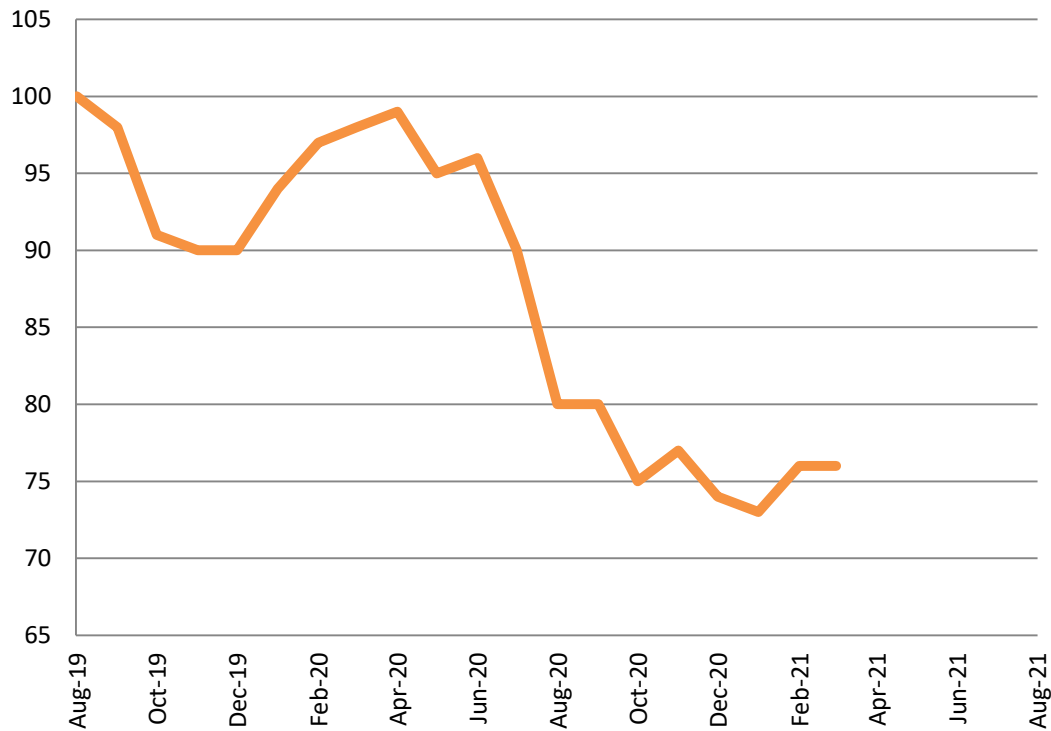
Drug Court- City of Wichita Year over Year - August



August	2019	2020	2021
Diversion	22	8	12
Probation	29	18	14
Total	51	26	26

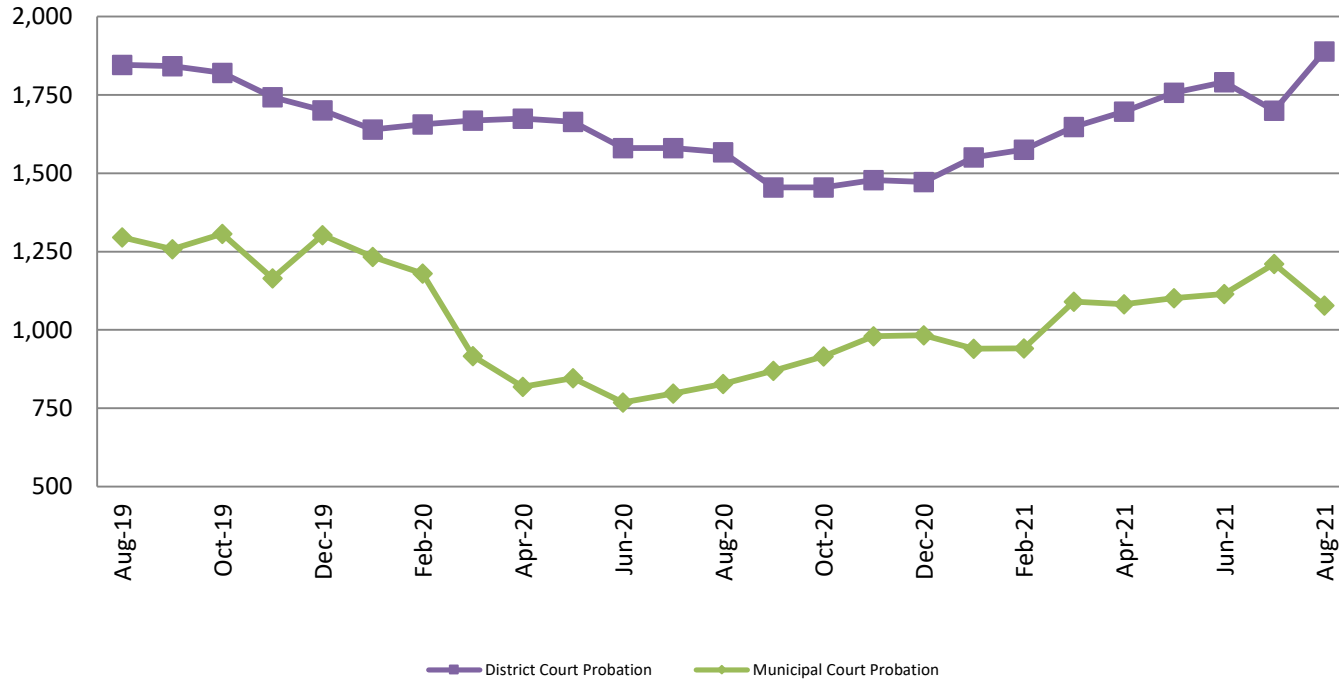


Drug Court - Sedgwick County ADP: August 2019 - present



August	2019	2020	2021
Sedg. Co. ADP	100	80	N/A
YTD Avg.	99	94	N/A

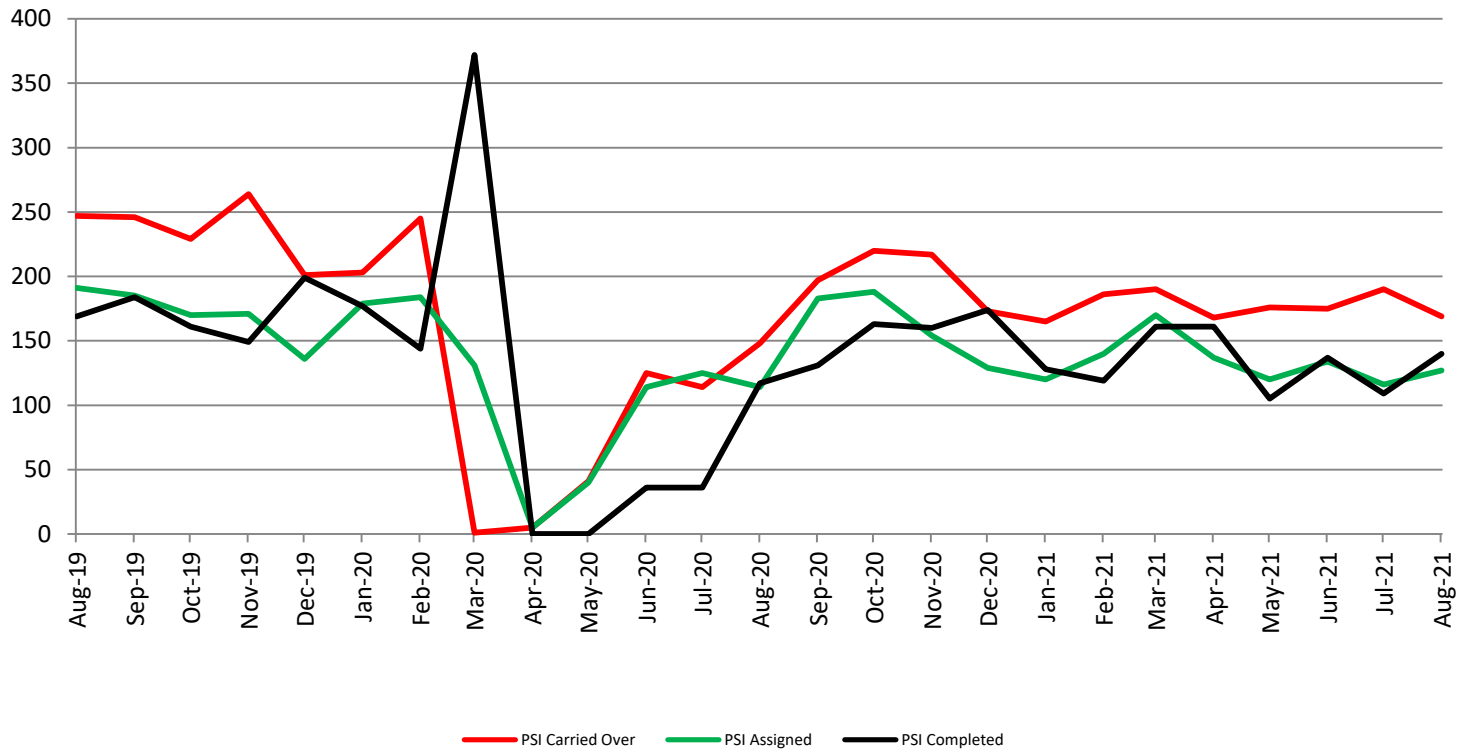
Probation - Active Caseloads August 2019 - present



August	2019	2020	2021	2019 YTD Avg.	2020 YTD Avg.	2021 YTD Avg.
Dist. Court Probation	1,846	1,567	1,889	1,918	1,629	1,701
Muni. Court Probation	1,296	828	1,078	1,252	924	1,070



District Court Probation: Pre-Sentence Investigation August 2019 - present

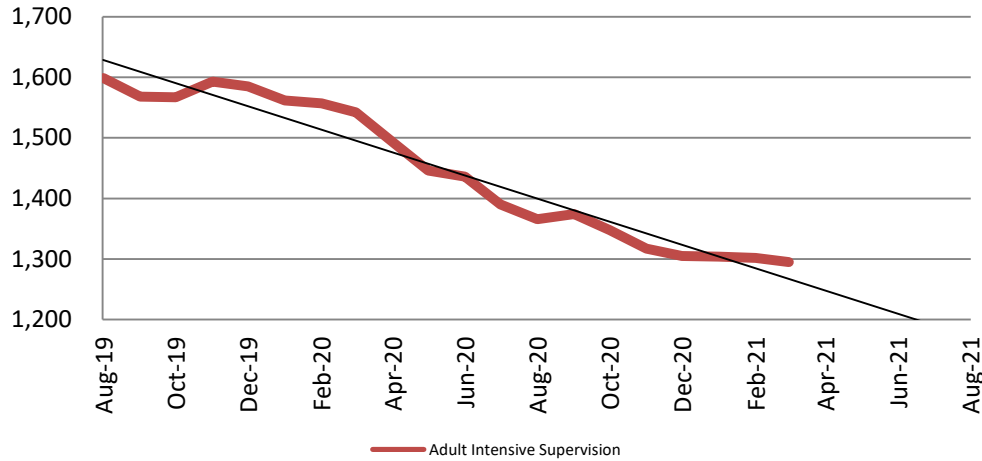


August	2019	2020	2021
Carried Over	247	148	169
Assigned	191	114	127
Completed	169	117	140



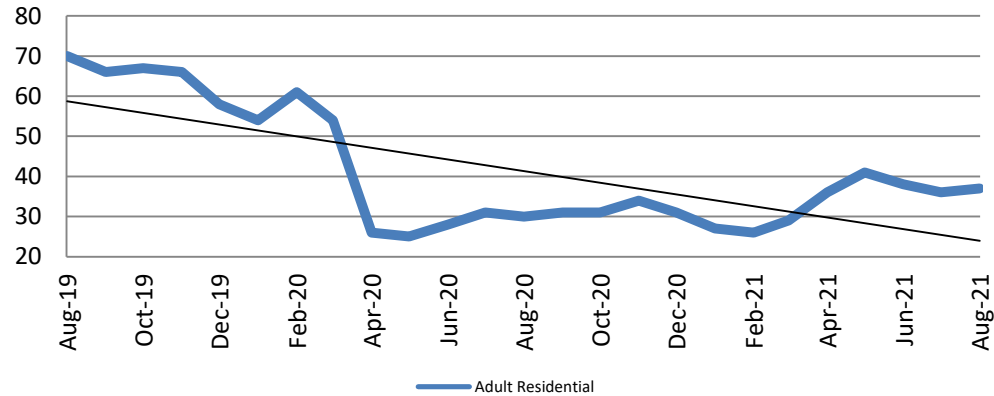
Community Corrections

**Adult Intensive Supervision Probation (AISP):
ADP August 2019 - present**



Year	August	August YTD Avg.
2019	1,599	1,540
2020	1,366	1,474
2021	N/A	N/A

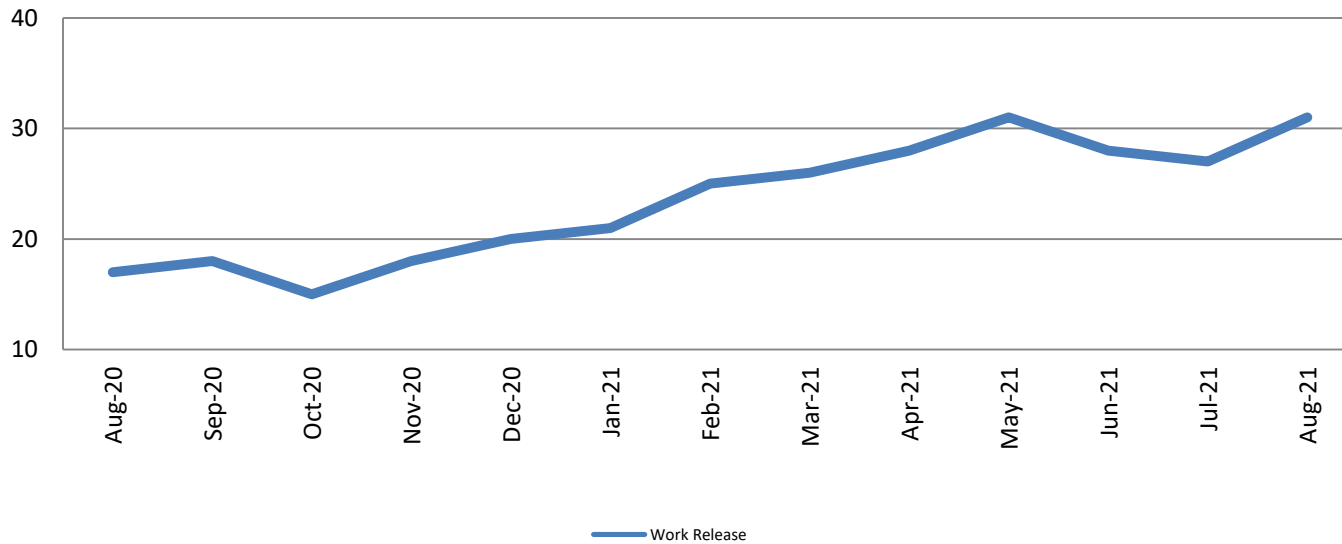
**Adult Residential: ADP
August 2019 - present**



Year	August	August YTD Avg.
2019	70	65
2020	30	39
2021	37	34

Community Corrections

Work Release: ADP August 2020 - present

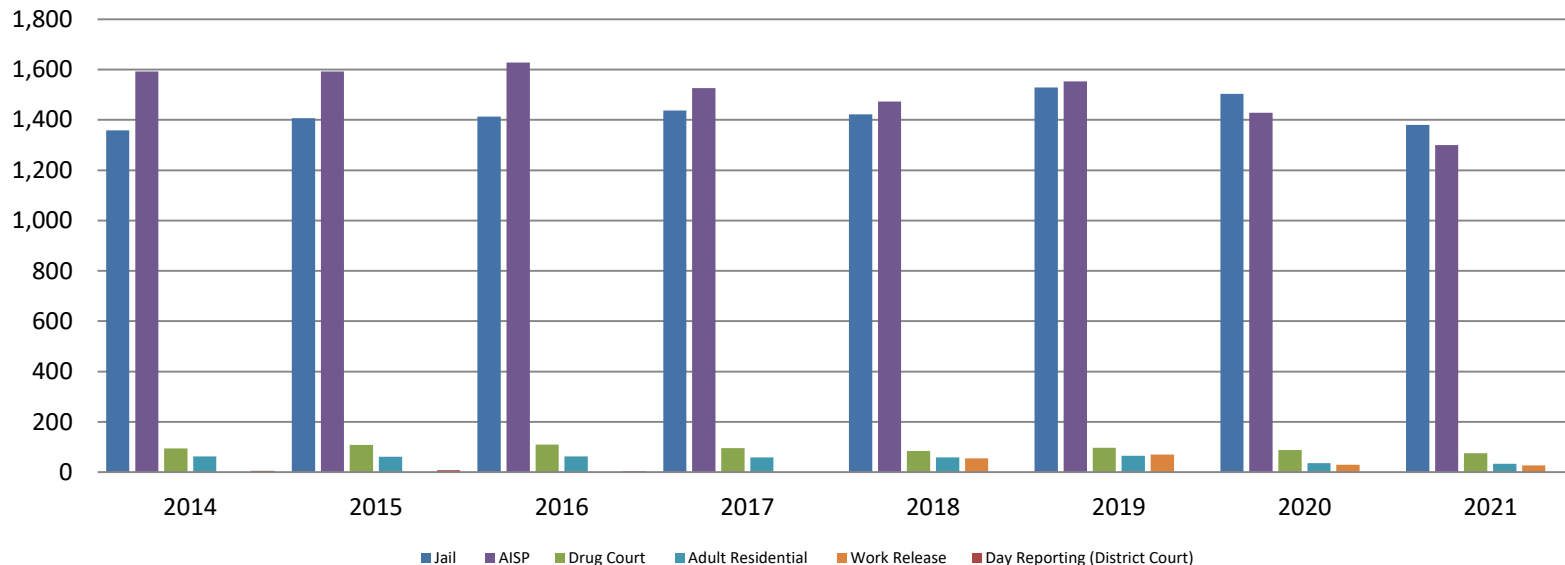


Month Year	Total	YTD Avg.
August 2020	17	37
August 2021	31	27



Correlation: Total & Sedgwick County Programs (Adult)

Total Annual ADP 2014 - present

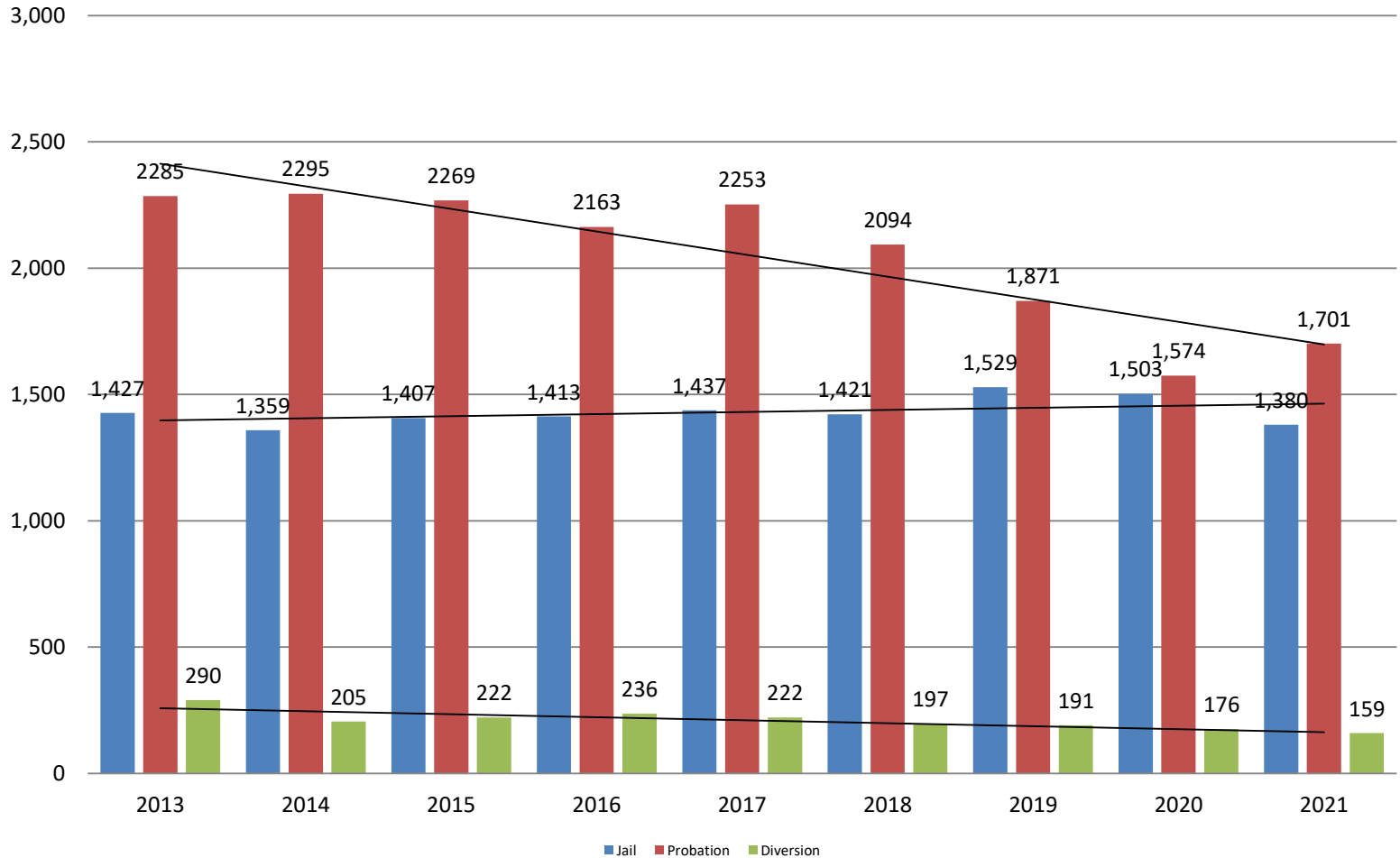


	2019	2020	2021
Jail	1,529	1,503	1,380
AISP	1,553	1,428	1,300
Drug Court	97	88	75
Adult Residential	65	36	34
Work Release	71	30	27
Day Reporting (DC)	0	0	0



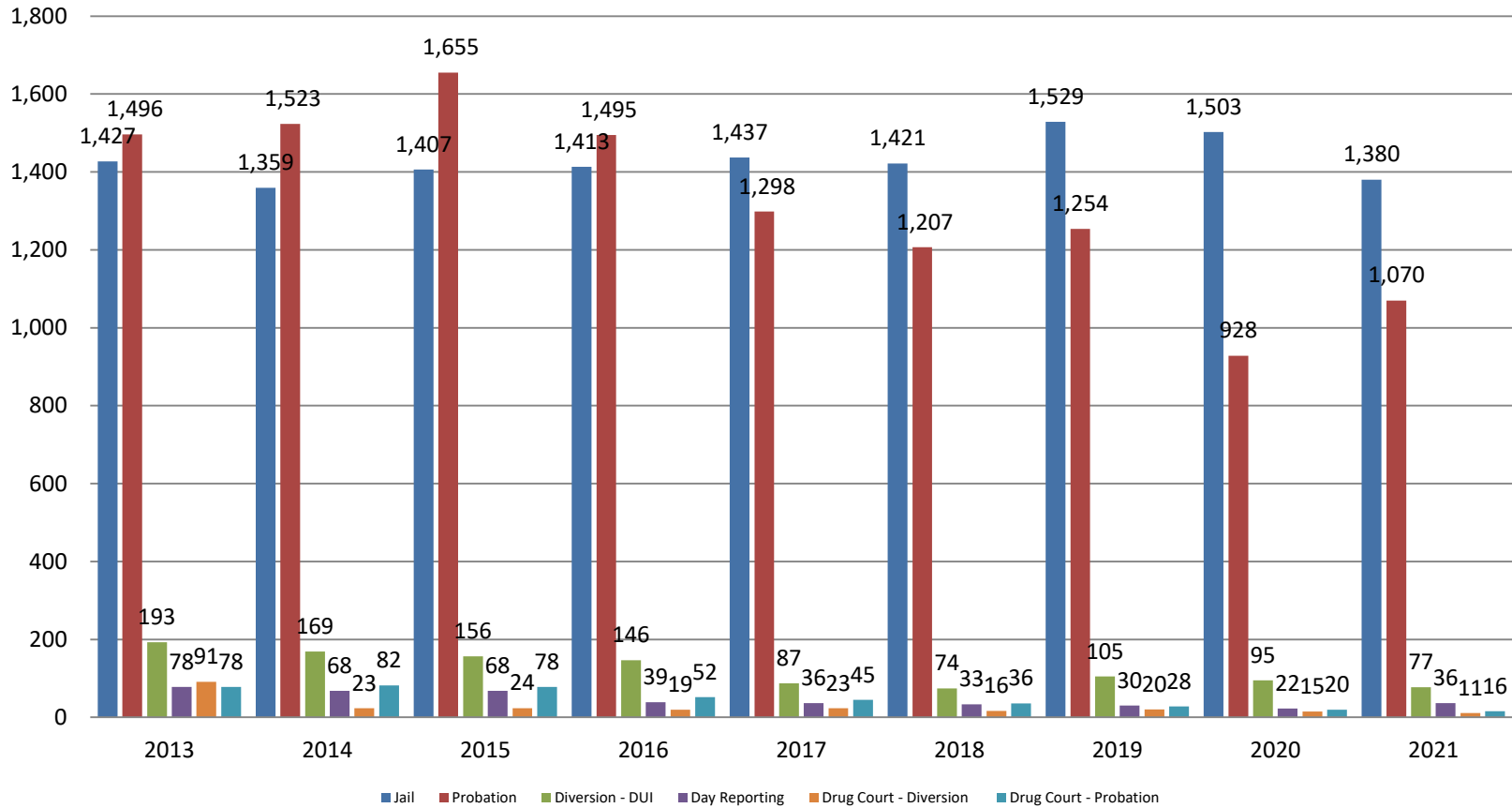
Correlation: Total & District Court Programs

Total Annual ADP: 2013 - present



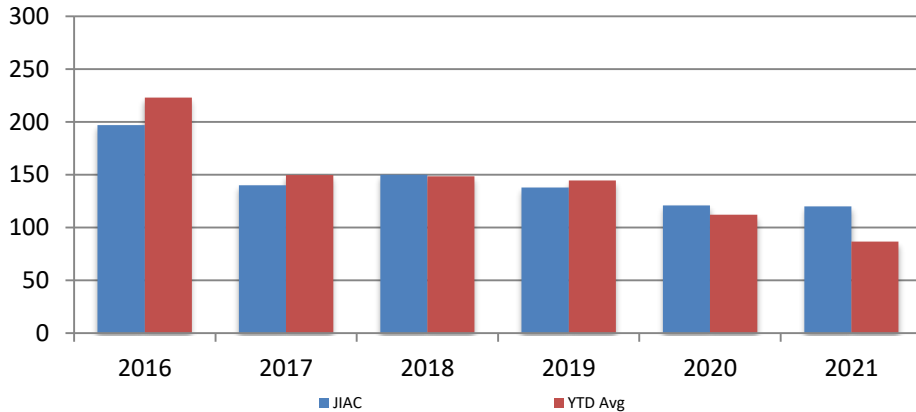
Correlation: Total & City of Wichita / Municipal Court Programs

Total Annual ADP: 2013 - present



Juvenile

**JIAC Intakes
August 2016 - present**

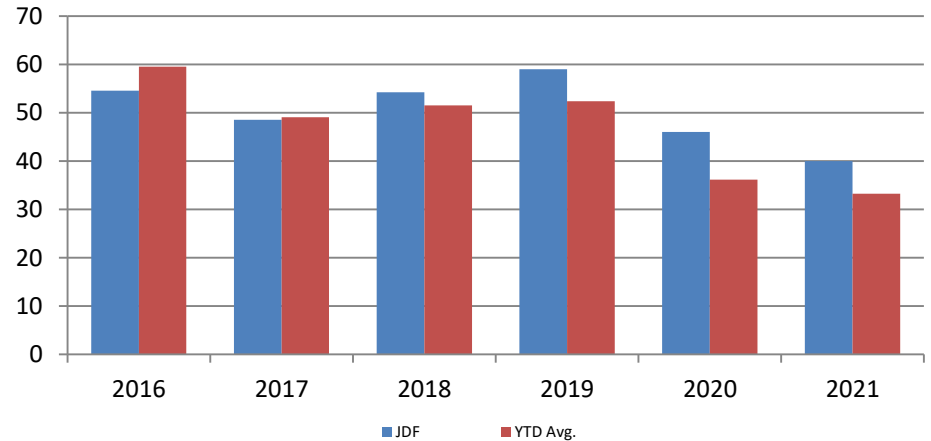


Year	August	August YTD Avg.
2016	197	223
2017	140	150
2018	150	148
2019	138	145
2020	121	112
2021	120	87

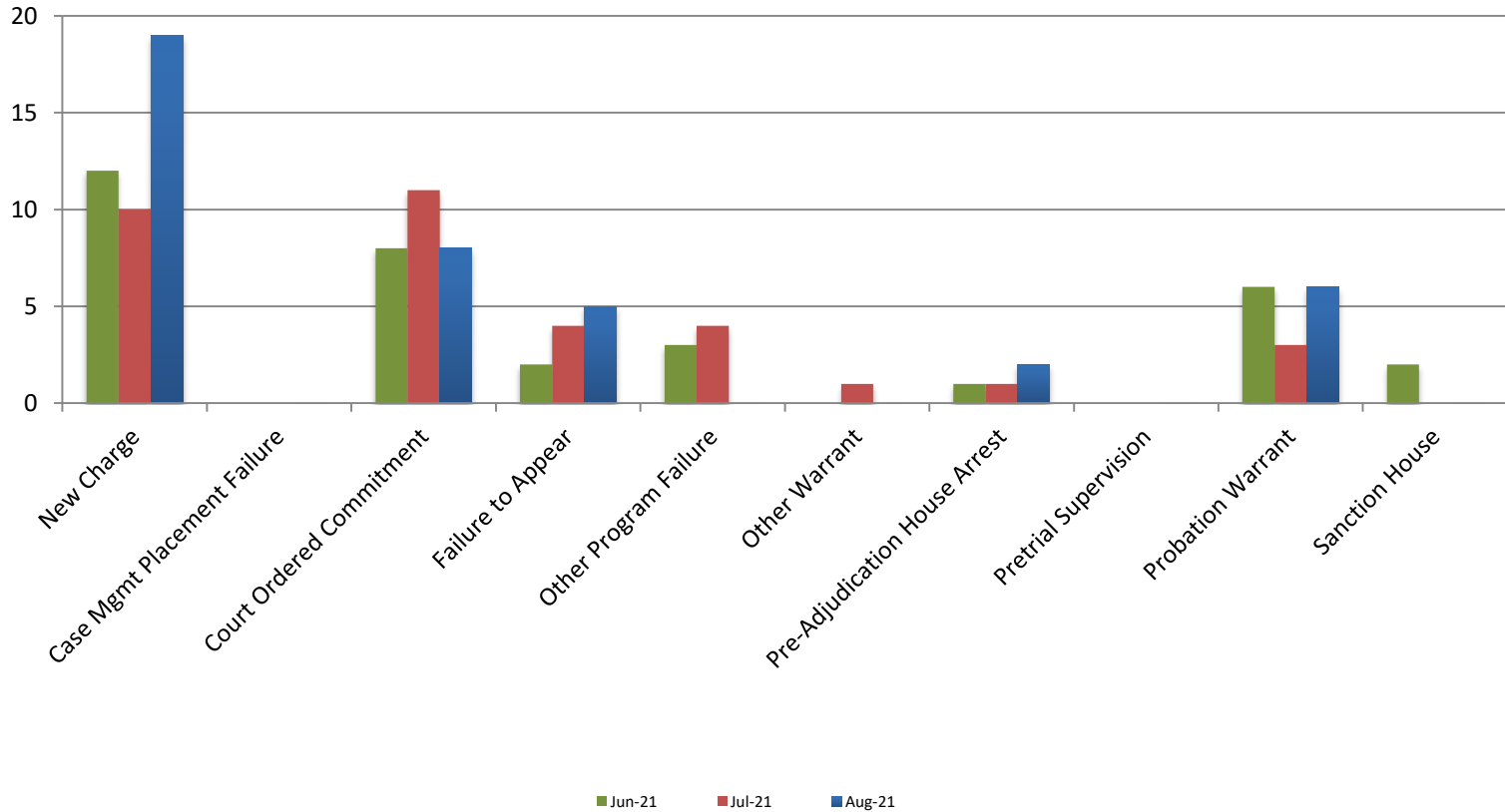
Year	August	August YTD Avg.
2016	55	60
2017	49	49
2018	54	52
2019	59	52
2020	46	36
2021	40	33

JDF ADP

August 2016 - present



Reason for JDF Admits



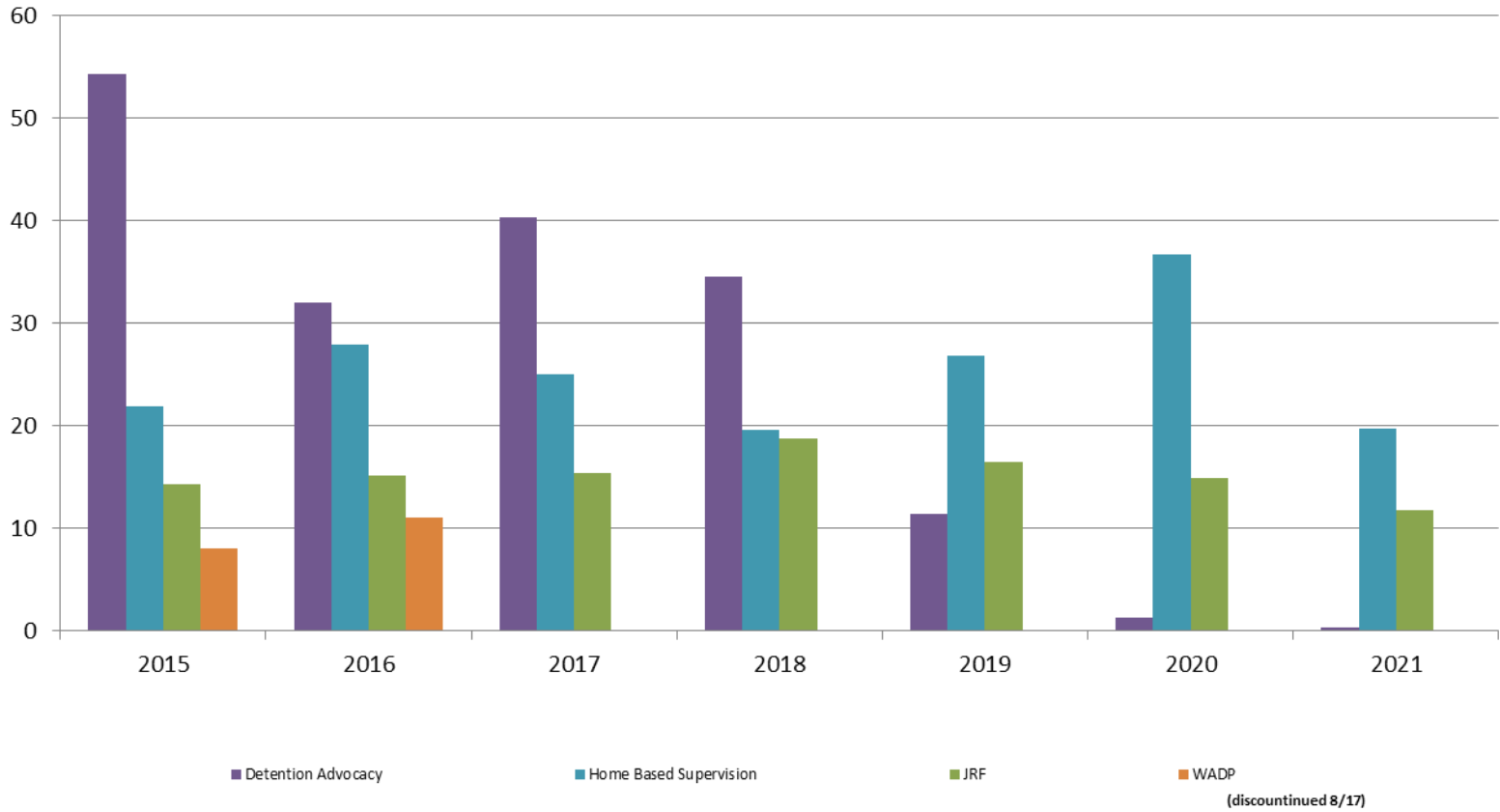
Reason for JDF Admits

Reason	August 2020	August 2021
New Charges	14	19
Case Management Placement Failures	0	0
Court Ordered Commitment	5	8
Failure to Appear	6	5
Other Program Failure	4	0
Other Warrant	0	0
Pre-Adjudication House Arrest	5	2
Pretrial Supervision	2	0
Probation Warrant	10	6
Sanction House	0	0



Juvenile Detention Alternatives

ADP: August 2015 - present



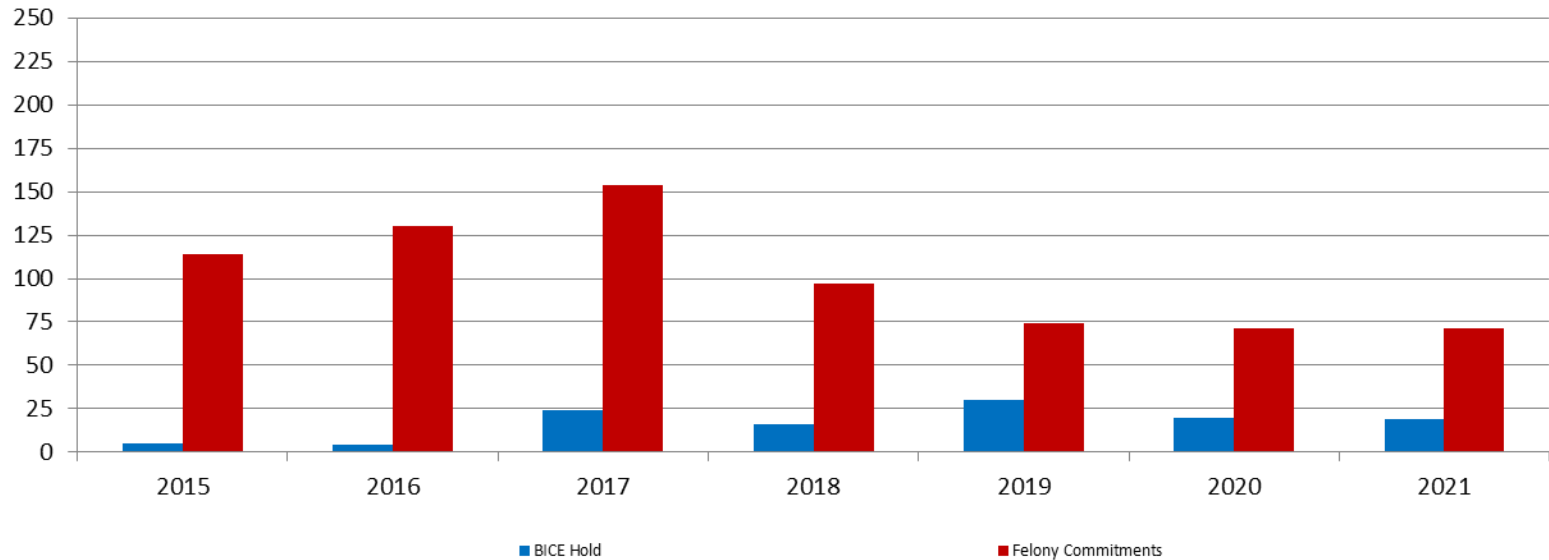
Juvenile Detention Services

August ADP	2018	2019	2020	2021
Juvenile Detention Facility	54	59	46	40
Juvenile Residential Facility	19	17	15	12
Home Based Supervision	20	27	37	20
Detention Advocacy Case Management Services	35	11	1	0
Weekend Alternative Detention Program (total)	0	N/A	N/A	N/A

August YTD AVERAGE	2018	2019	2020	2021
Juvenile Detention Facility	52	52	36	33
Juvenile Residential Facility	13	15	17	11
Home Based Supervision	25	28	30	23
Detention Advocacy Case Management Services	33	22	11	3
Weekend Alternative Detention Program	0	N/A	N/A	N/A

Monthly Jail Snapshot: August 2021

Snapshots August 2015 - present

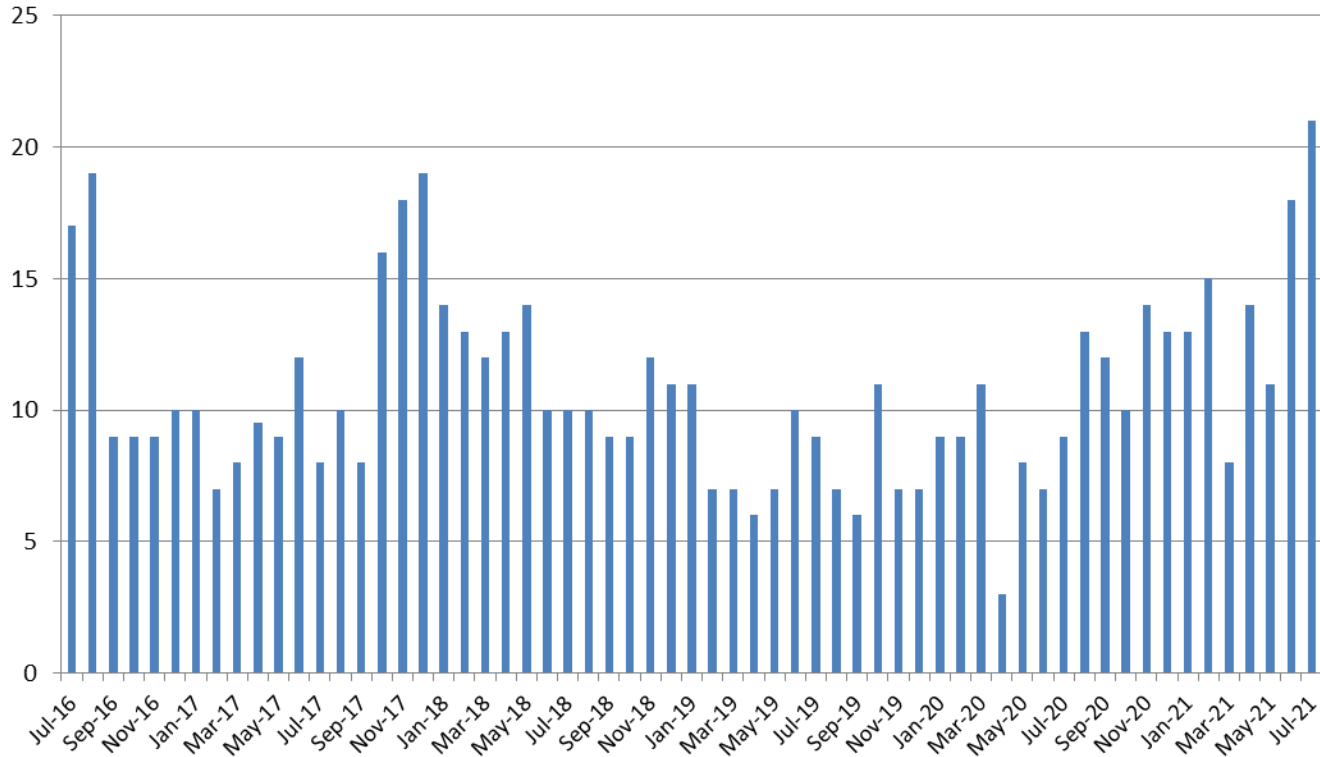


BICE Hold	2015	2016	2017	2018	2019	2020	2021
August	5	4	24	16	30	20	19

Felony Commitments	2015	2016	2017	2018	2019	2020	2021
August	114	130	154	97	74	71	71



Journal Entry Completion (Average Days) July 2016 - present



July	2016	2017	2018	2019	2020	2021
Avg. Days	17	8	10	9	9	21
YTD Avg.	13	9	12.3	8.1	8	14

