

# Criminal Justice Coordinating Council

## Population Report & Program Trends

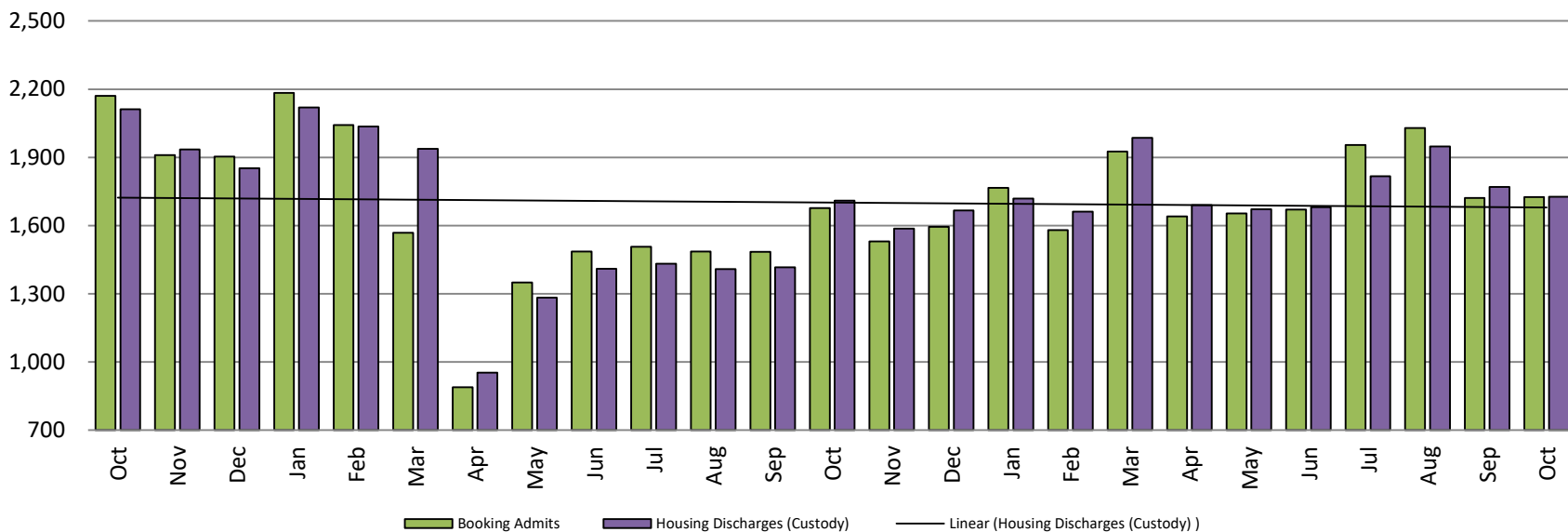
October 2021



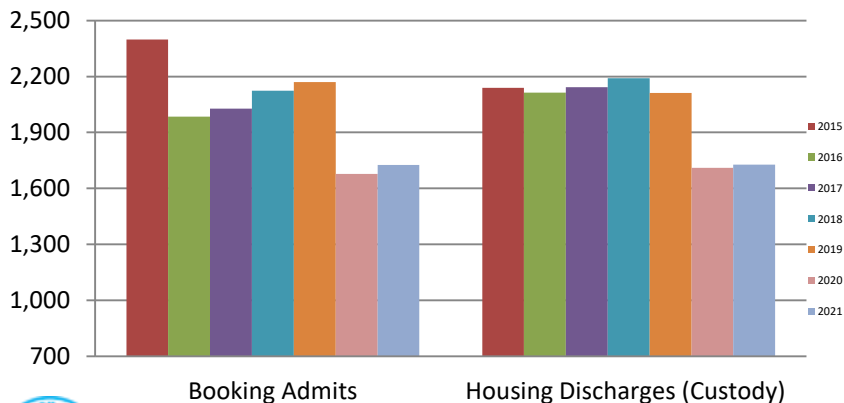
*Sedgwick County...*  
*working for you*

# Detention Facility

## Booking Admits & Housing Discharges from Custody October 2019 - present



### Bookings Year over Year: Month of October

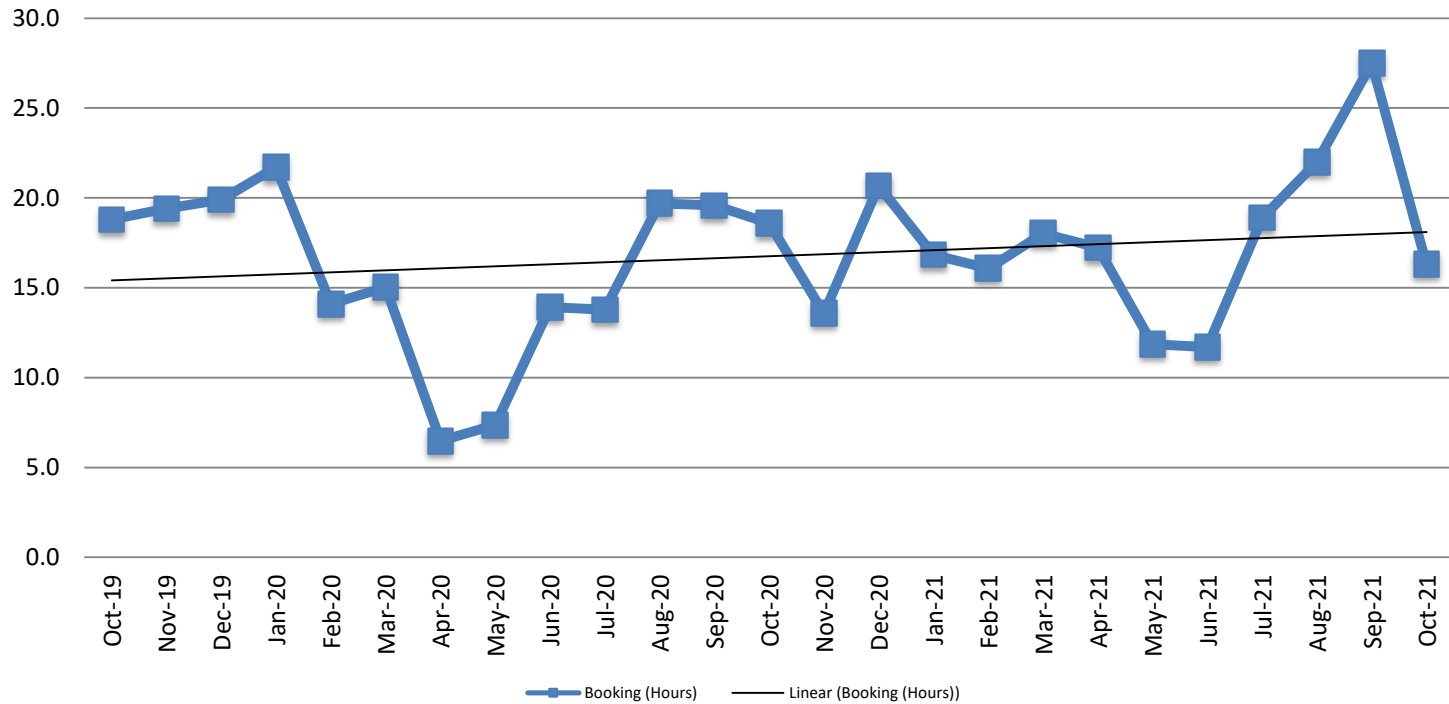


Bookings October	Housing Discharges October
2019: 2,170	2019: 2,111
2020: 1,677	2020: 1,710
2021: 1,726	2021: 1,727



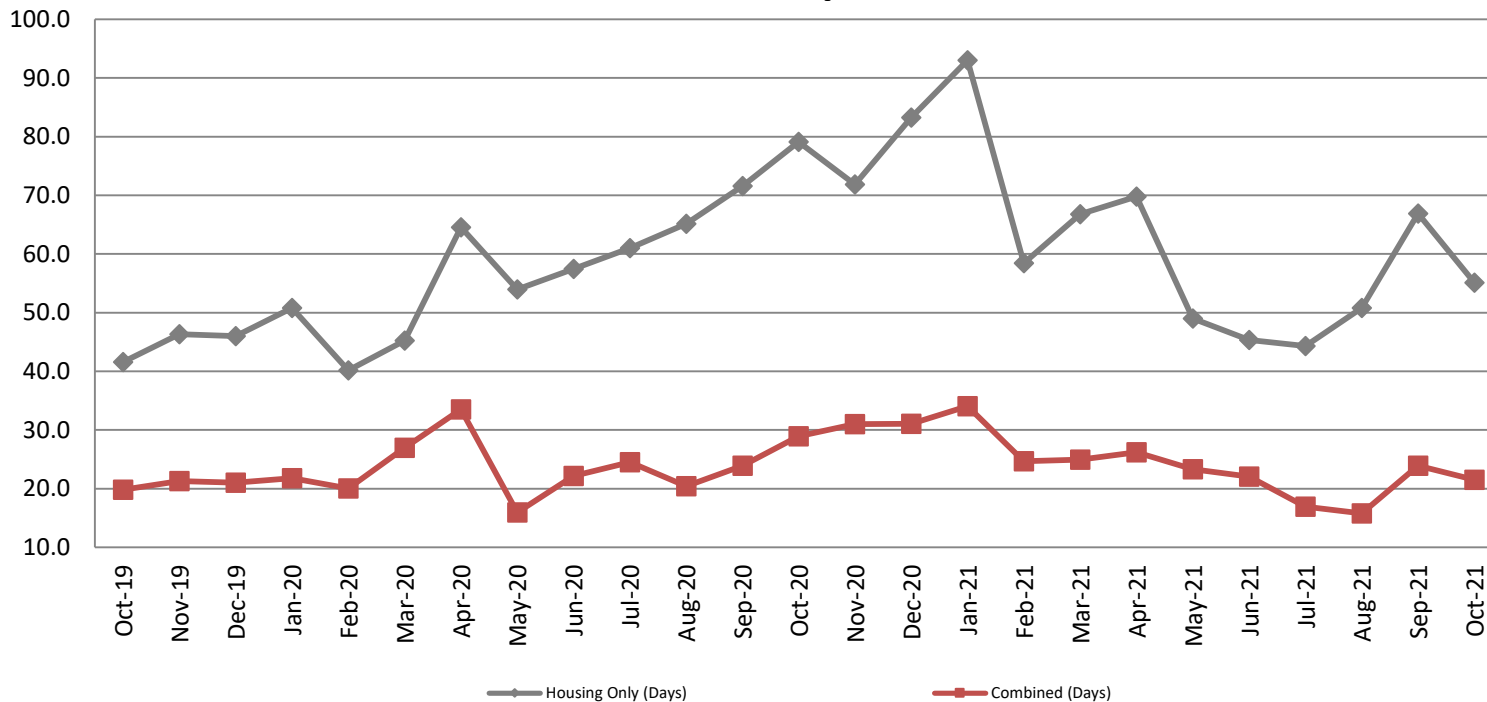
Sedgwick County...  
working for you

## Average Length of Stay: Booking (Hours) October 2019 - present



October	October YTD Average
2019: 18.8	2019: 14.7
2020: 18.6	2020: 15.0
2021: 16.3	2021: 17.6

## Average Length of Stay: Housing & Combined (Days) October 2019 - present

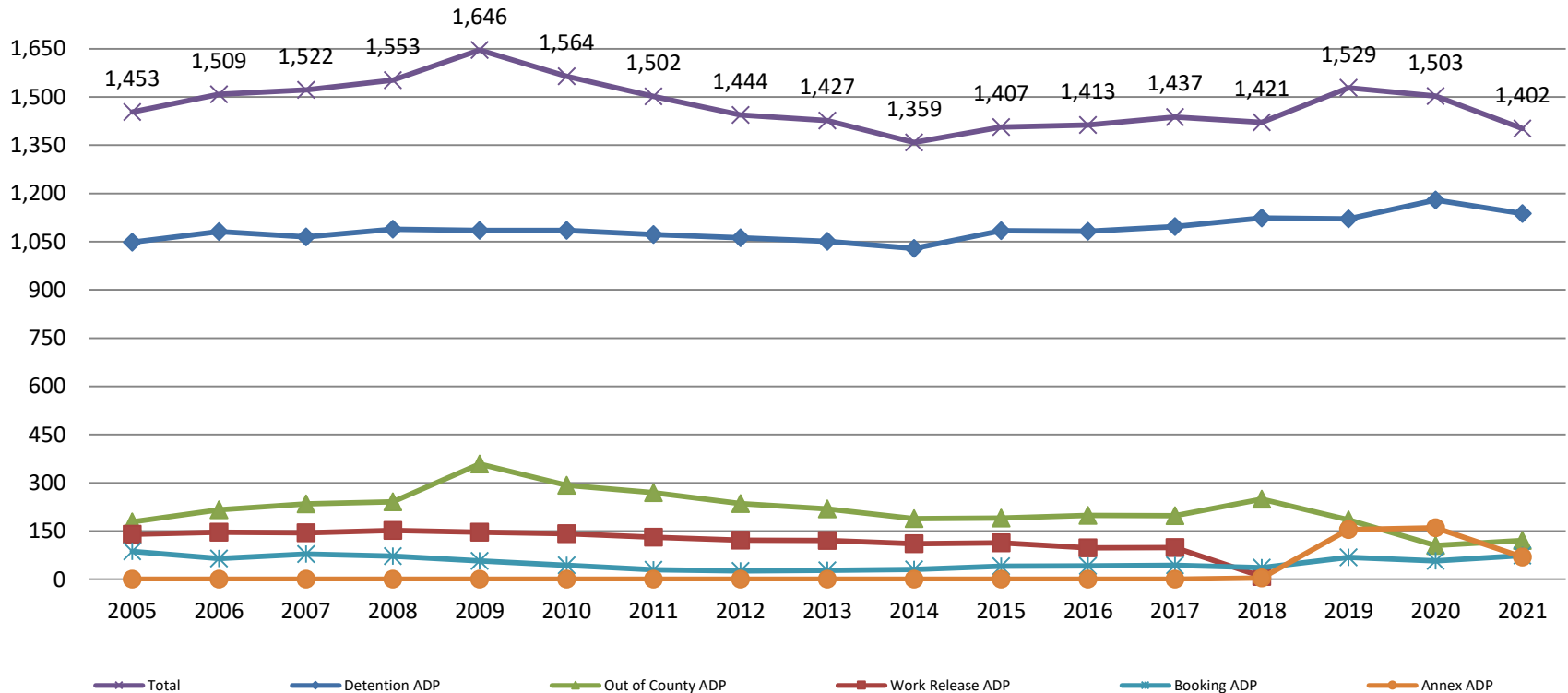


Month Year	Housing Only	Housing YTD AVG	Combined Days	Combined YTD AVG
October 2019	41.6	41.2	19.8	20.6
October 2020	79.1	58.9	28.9	23.8
October 2021	55.1	59.9	21.5	23.3

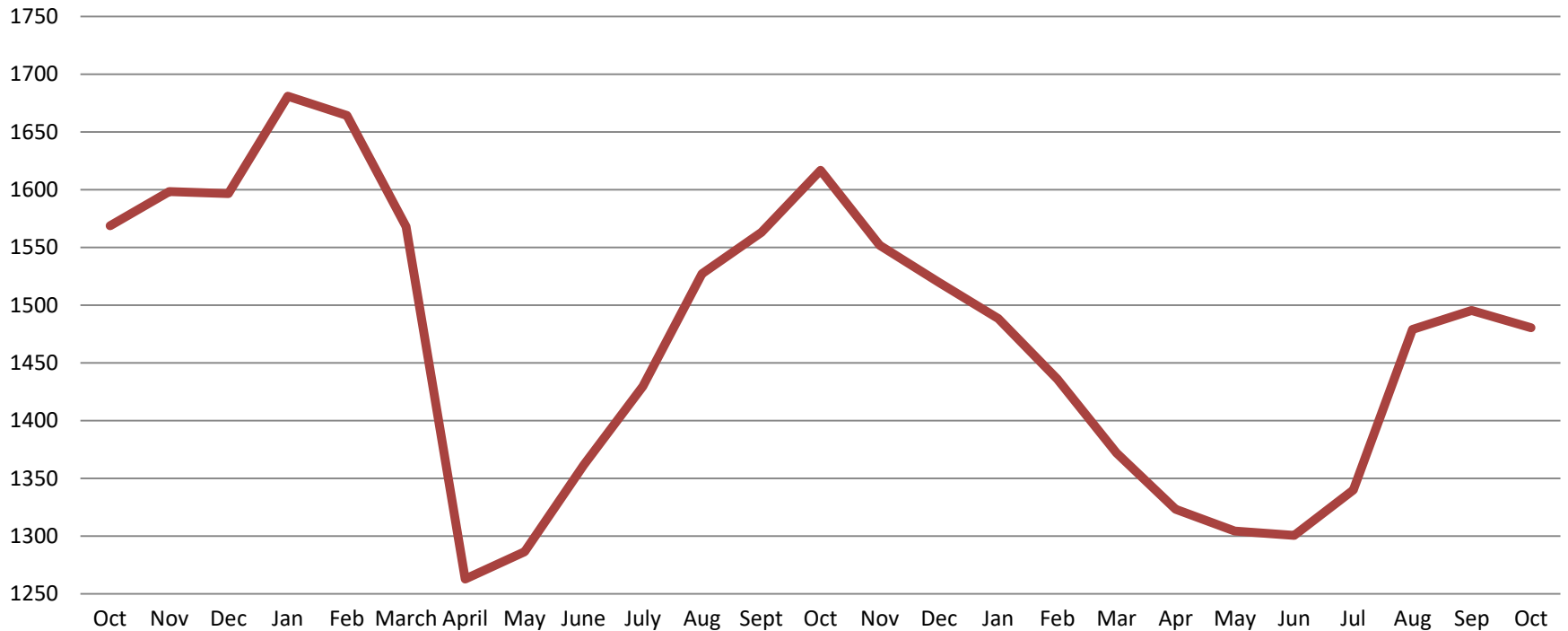


# Jail: Annual Average Daily Population (ADP)

**TRENDS: Booking, Detention, Work Release, & Out of County Annual ADP:  
2005 - present**

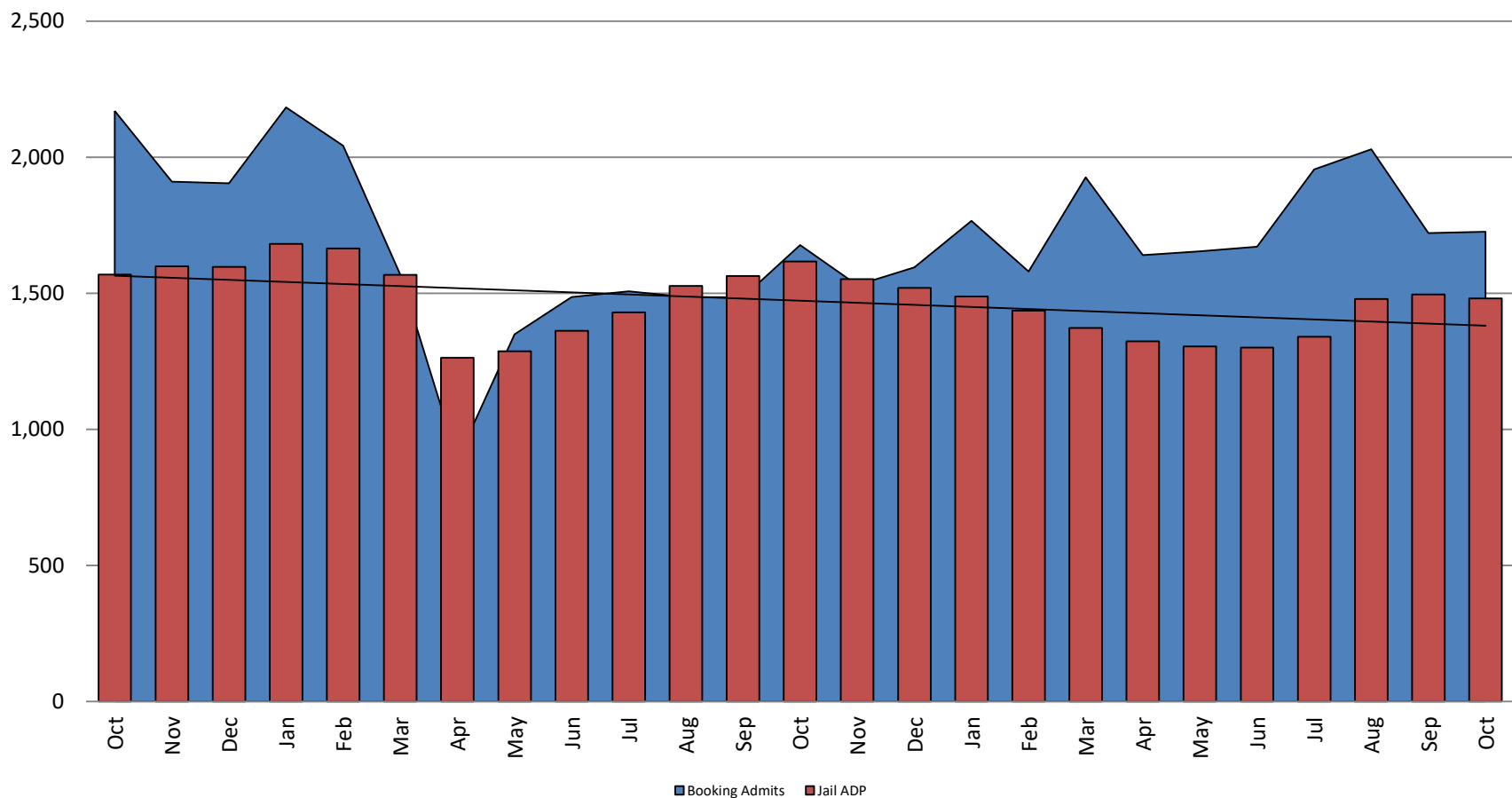


# TOTAL MONTHLY ADP: JAIL (Booking, Detention Facility, Annex, & Out of County) October 2019 - present



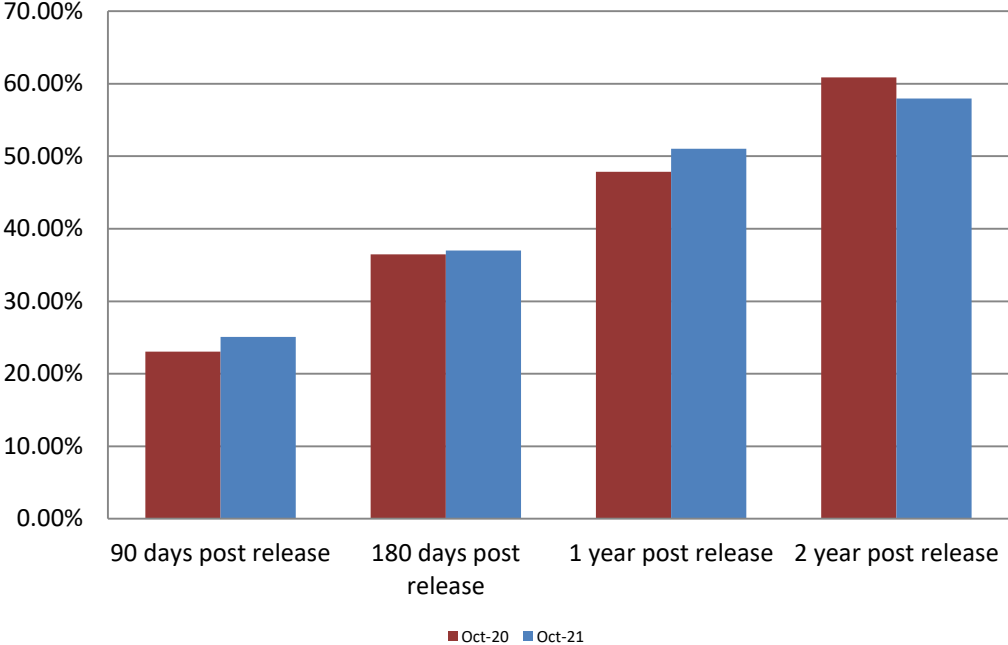
October 2019	October 2020	October 2021
1,569	1,617	1,481

## Booking Admits & Total Monthly ADP (Jail): October 2019 - present



Jail includes individuals in booking, detention, work release and out-of county (combined)  
(data obtained from detention facility)

# Percent of Released Inmates Rearrested October

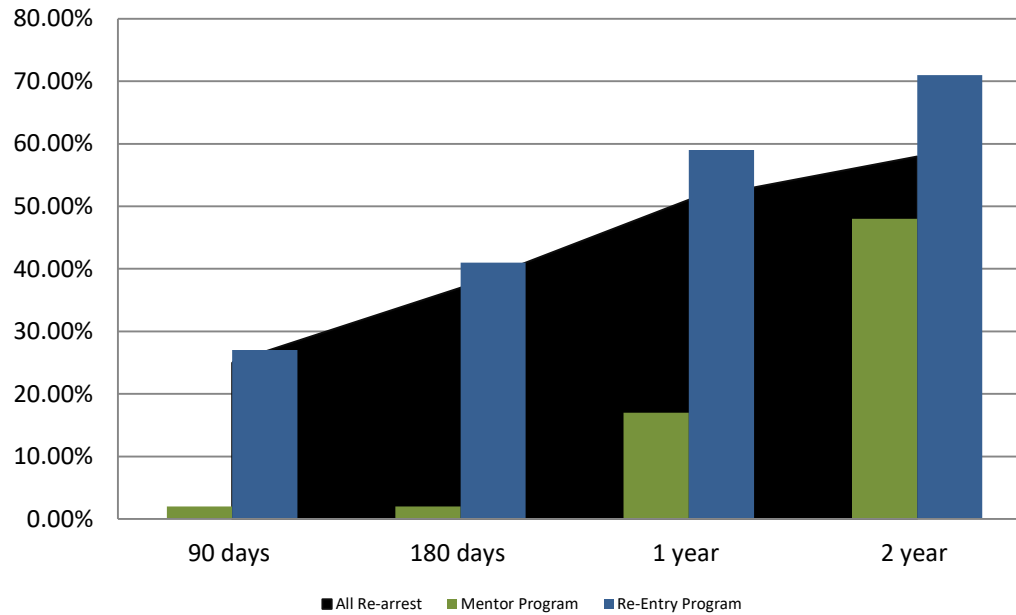


Month Year	90 Days	180 Days	1 Year	2 Years
October 2020	23.06%	36.45%	47.85%	60.90%
October 2021	25.07%	36.98%	51.05%	57.97%





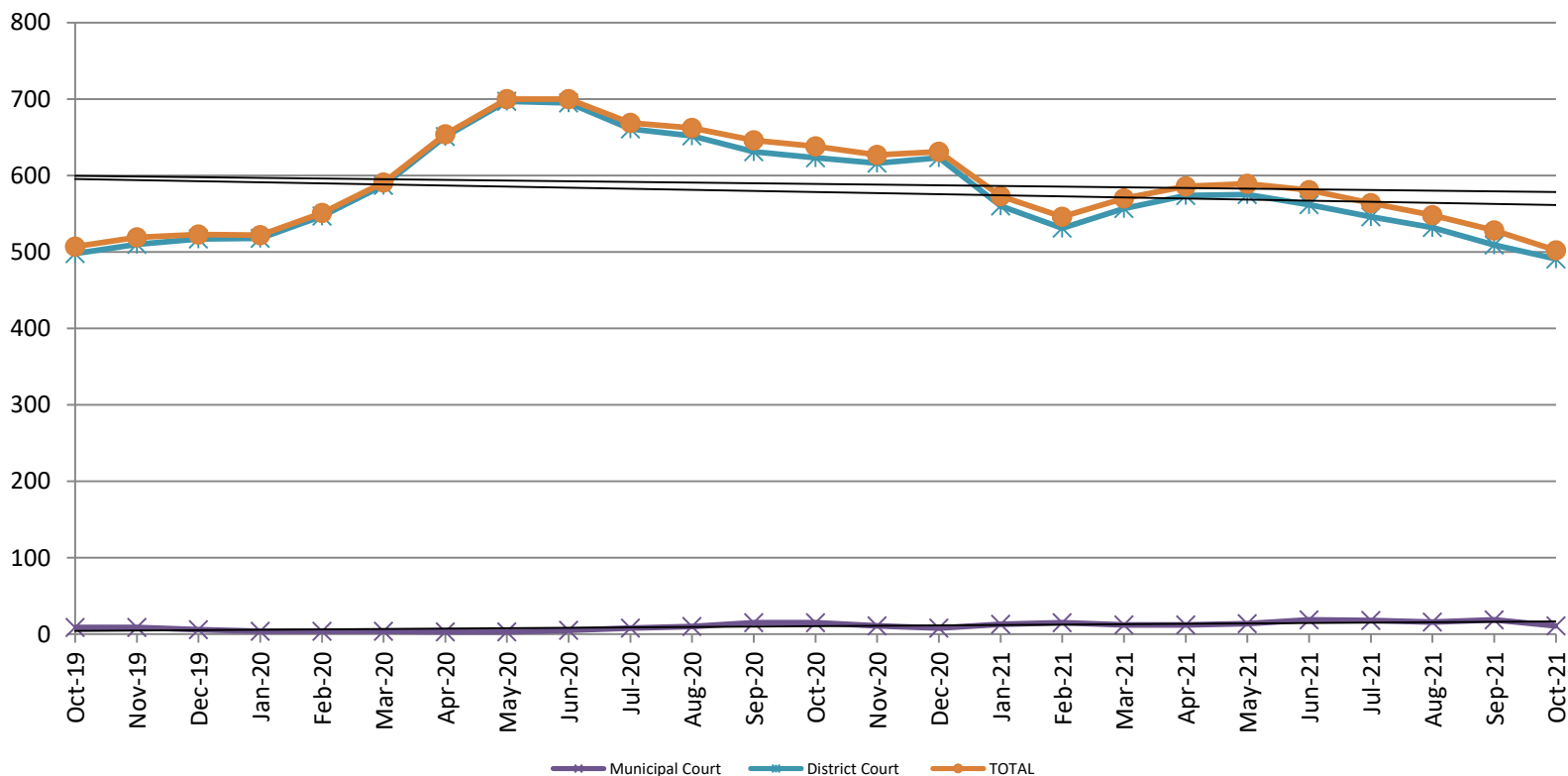
## Recidivism by Programs October 2021



October 2021	90 Days	180 Days	1 year	2 years
All Re-arrests	25.07%	36.98%	51.05%	57.97%
Mentor Program	2%	2%	17%	48%
Re-Entry Program	27%	41%	59%	71%



## Pretrial Services Program (PSP) Monthly ADP: October 2019 - present

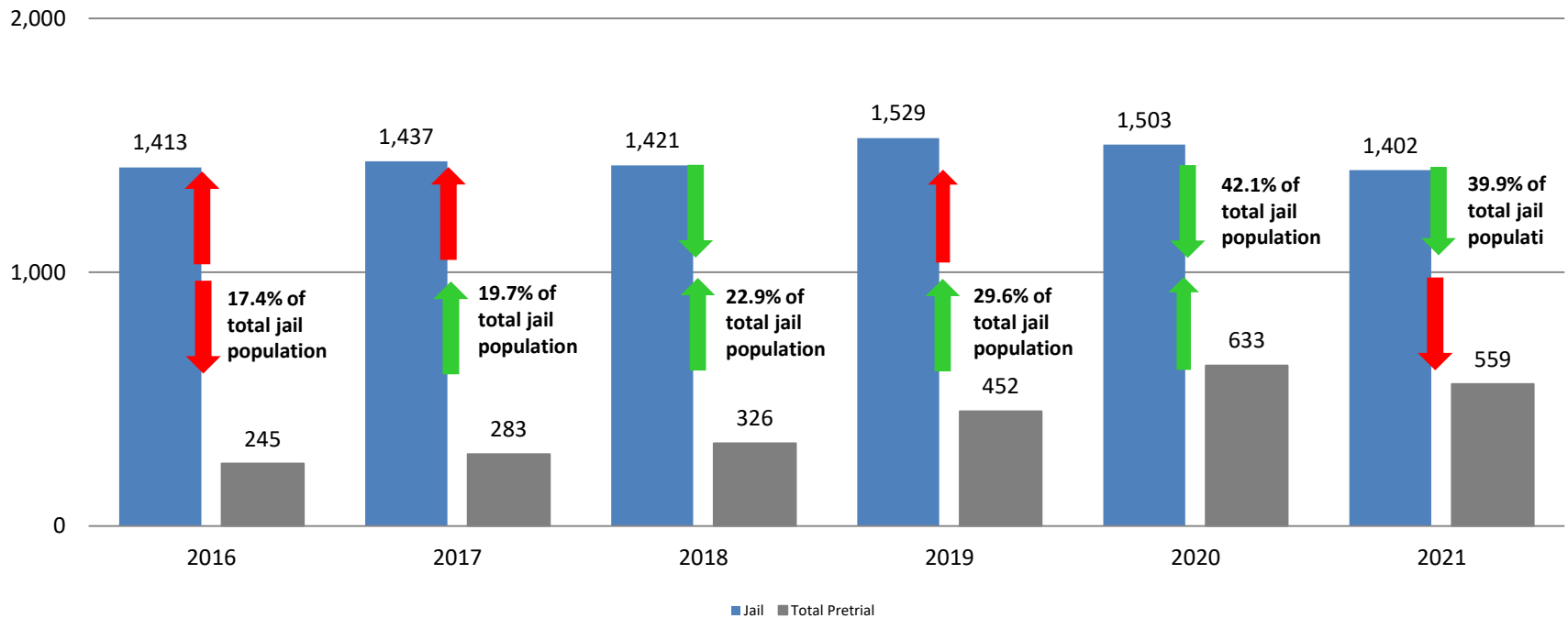


October	2019 ADP	2020 ADP	2021 ADP	2019 YTD Avg.	2020 YTD Avg.	2021 YTD Avg.
Muni. Court	9	15	11	13	7	14.9
Dist. Court	498	623	491	425	626	543.7
<b>Total</b>	<b>507</b>	<b>638</b>	<b>502</b>	<b>439</b>	<b>633</b>	<b>558.7</b>



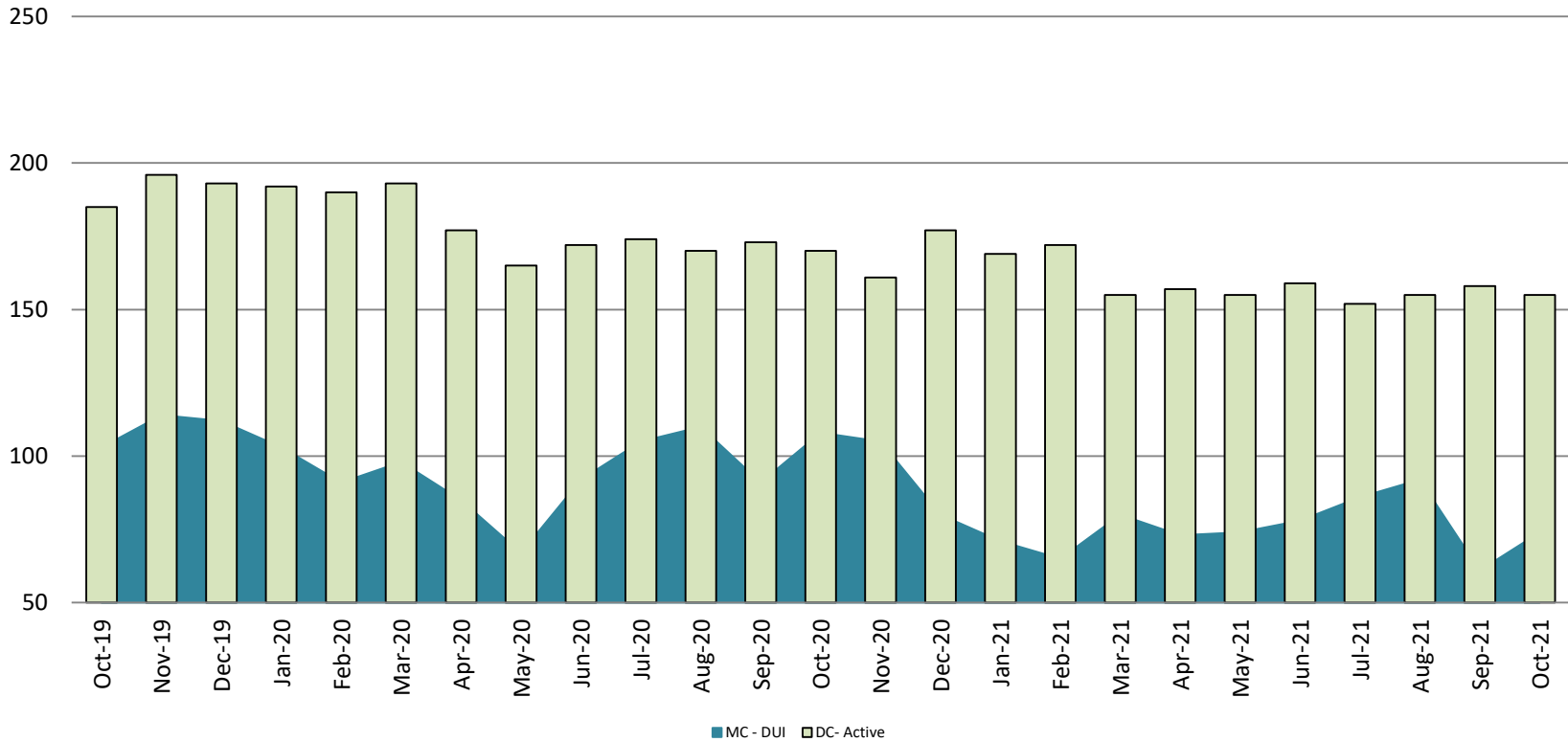
# Correlation: Total & PSP

## Total Annual ADP: 2016 - present



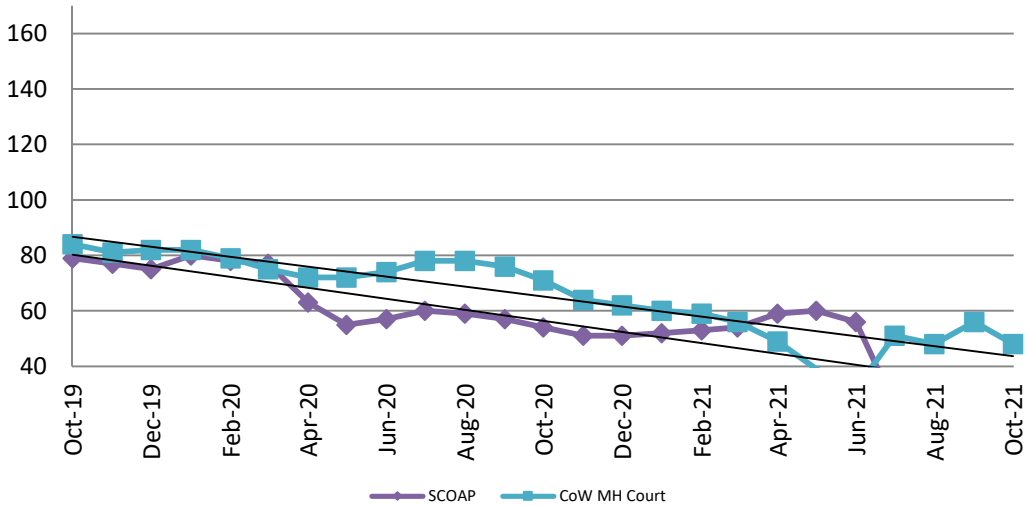
# Diversion - Active Caseload

October 2019 - present

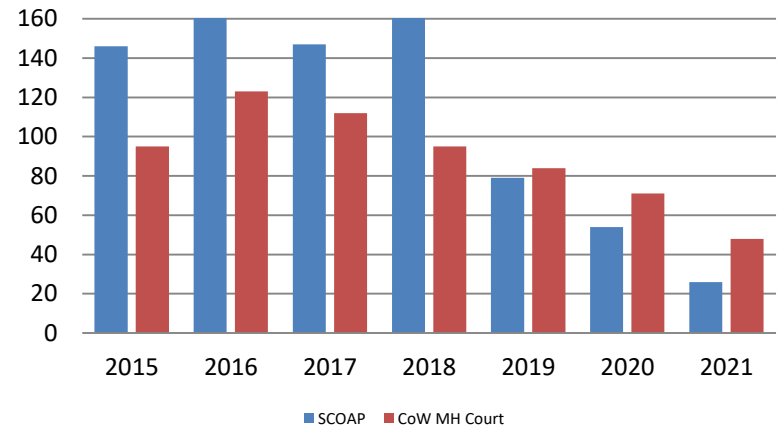


October	2019	2020	2021	2019 YTD Avg.	2020 YTD Avg.	2021 YTD Avg.
Muni. Court- DUI	103	108	74	103	95	75
Dist. Court- Active	185	170	155	190	178	159

## Mental Health - ADP October 2019 - present

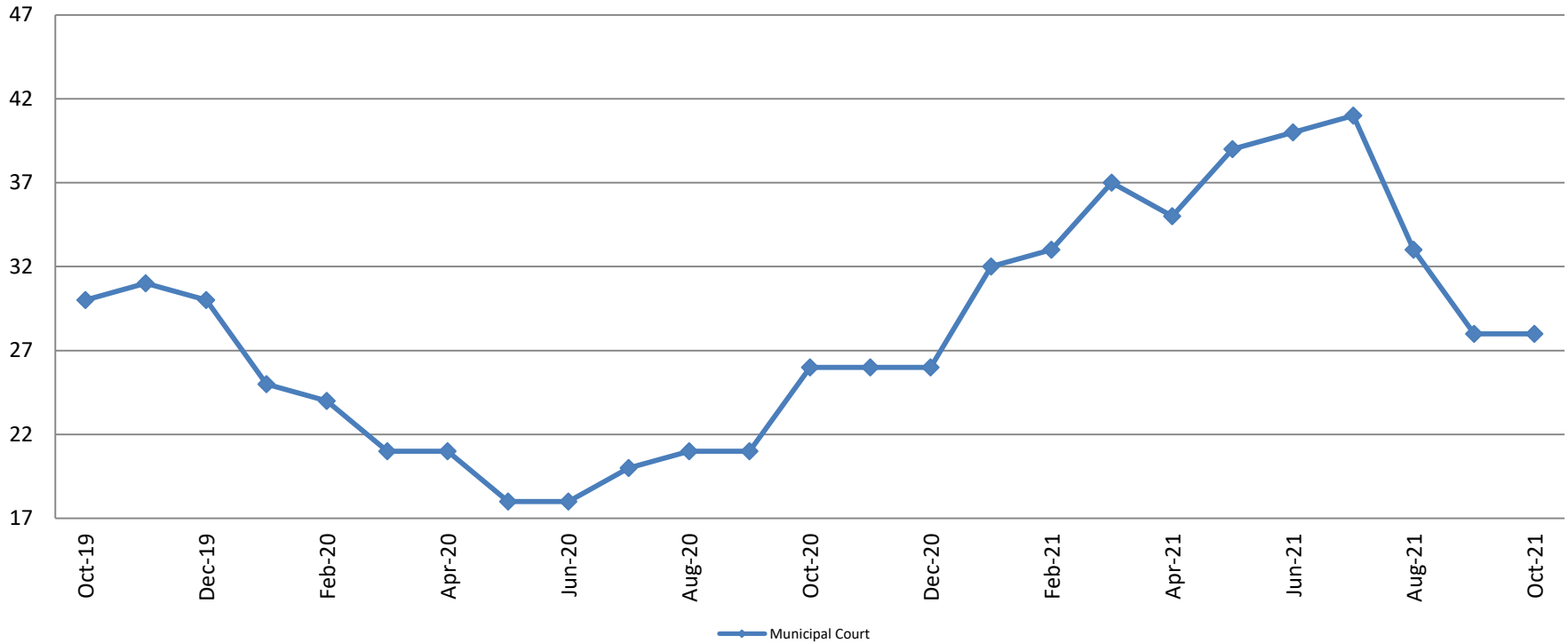


## Mental Health ADP Year over Year - October



October	2019 ADP	2020 ADP	2021 ADP	2019 YTD Avg.	2020 YTD Avg.	2021 YTD Avg.
SCOAP	79	54	26	103	64	44
MH Court	84	71	48	96	76	50

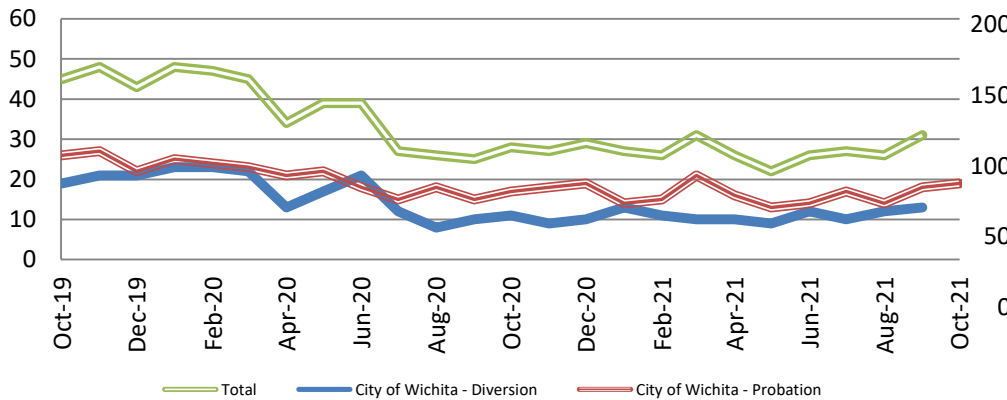
## Day Reporting - Active Caseload October 2019 - present



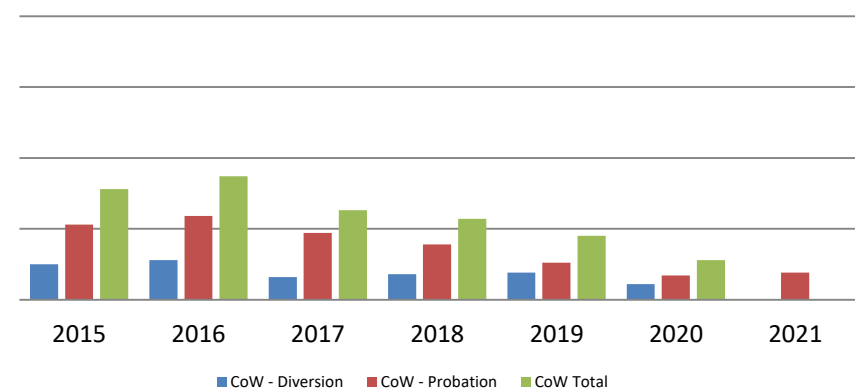
<b>October</b>	<b>2016</b>	<b>2017</b>	<b>2018</b>	<b>2019</b>	<b>2020</b>	<b>2021</b>
Muni. Court	31	40	31	30	26	28
Muni. Court YTD Avg.	41	36	34	30	22	35



## Drug Court - City of Wichita ADP: October 2019 - present



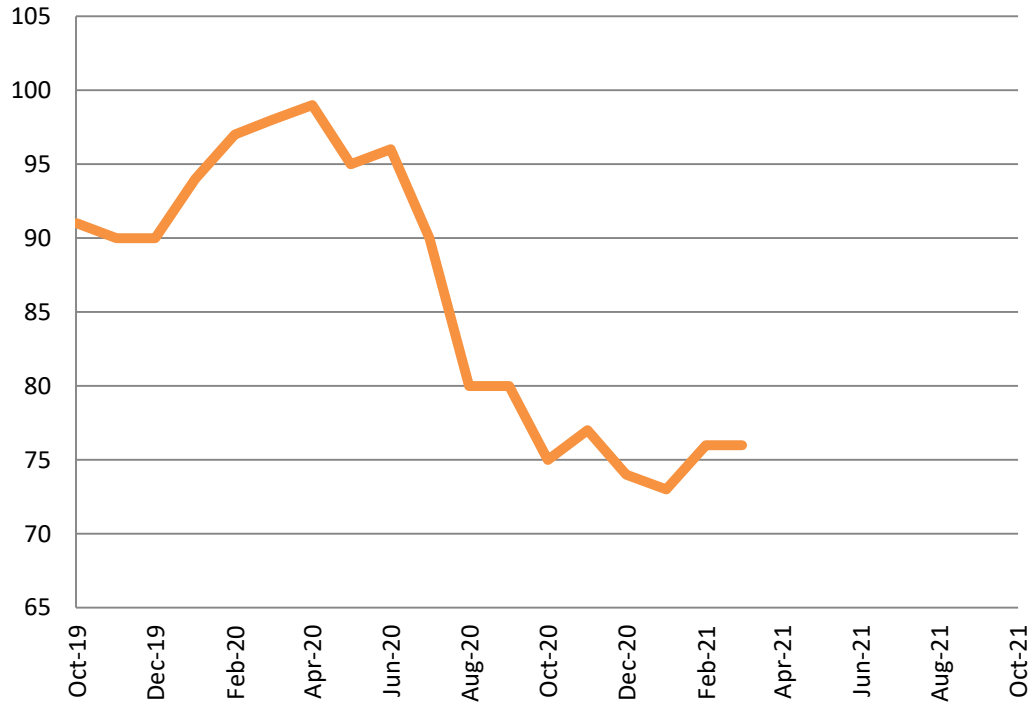
## Drug Court- City of Wichita Year over Year - October



October	2019	2020	2021
Diversion	19	11	N/A
Probation	26	17	19
Total	45	28	N/A



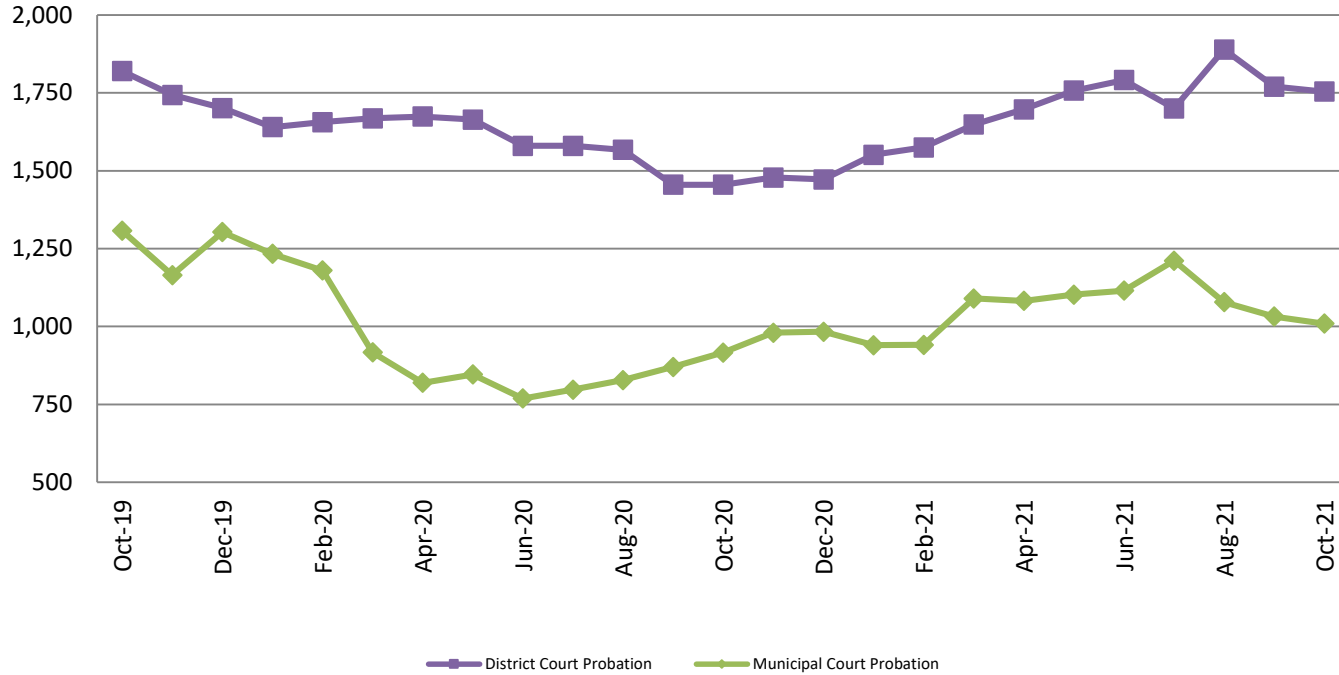
## Drug Court - Sedgwick County ADP: October 2019 - present



<b>October</b>	<b>2019</b>	<b>2020</b>	<b>2021</b>
Sedg. Co. ADP	91	75	N/A
YTD Avg.	98	90	N/A



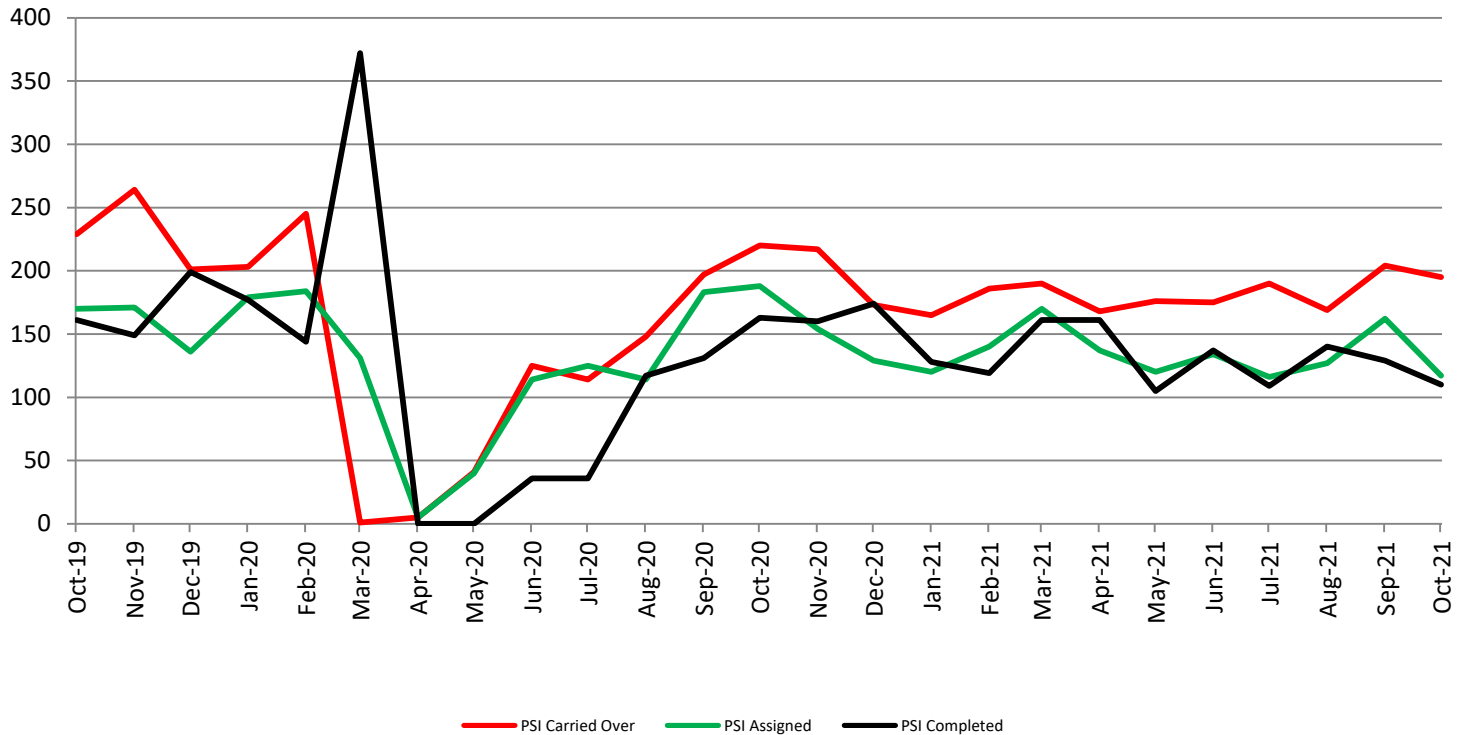
## Probation - Active Caseloads October 2019 - present



October	2019	2020	2021	2019 YTD Avg.	2020 YTD Avg.	2021 YTD Avg.
Dist. Court Probation	1,820	1,455	1,754	1,900	1,594	1,713
Muni. Court Probation	1,307	916	1,009	1,258	918	1,060



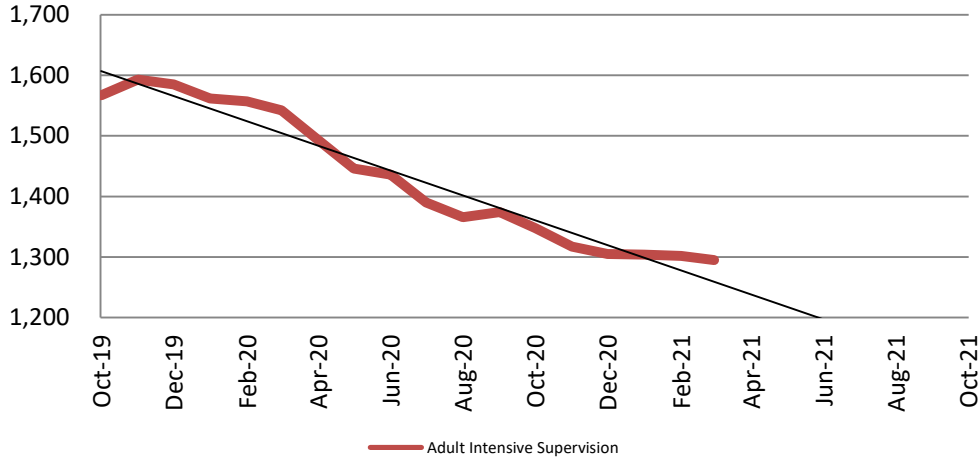
## District Court Probation: Pre-Sentence Investigation October 2019 - present



<b>October</b>	<b>2019</b>	<b>2020</b>	<b>2021</b>
Carried Over	229	220	195
Assigned	170	188	117
Completed	161	163	110

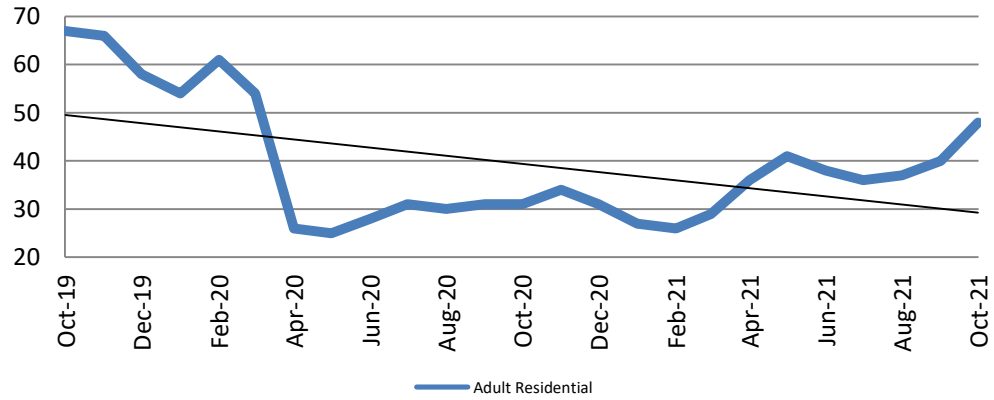
# Community Corrections

**Adult Intensive Supervision Probation (AISP):  
ADP October 2019 - present**



Year	October	October YTD Avg.
2019	1,567	1,545
2020	1,348	1,451
2021	N/A	N/A

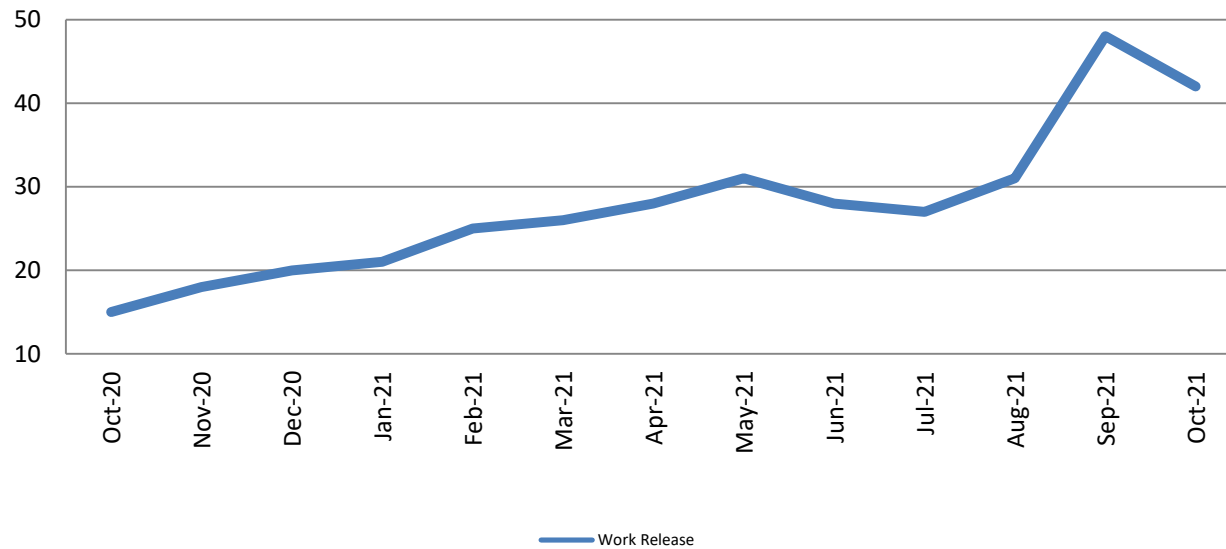
**Adult Residential: ADP  
October 2019 - present**



Year	October	October YTD Avg.
2019	67	65
2020	31	37
2021	48	36

# Community Corrections

## Work Release: ADP October 2020 - present

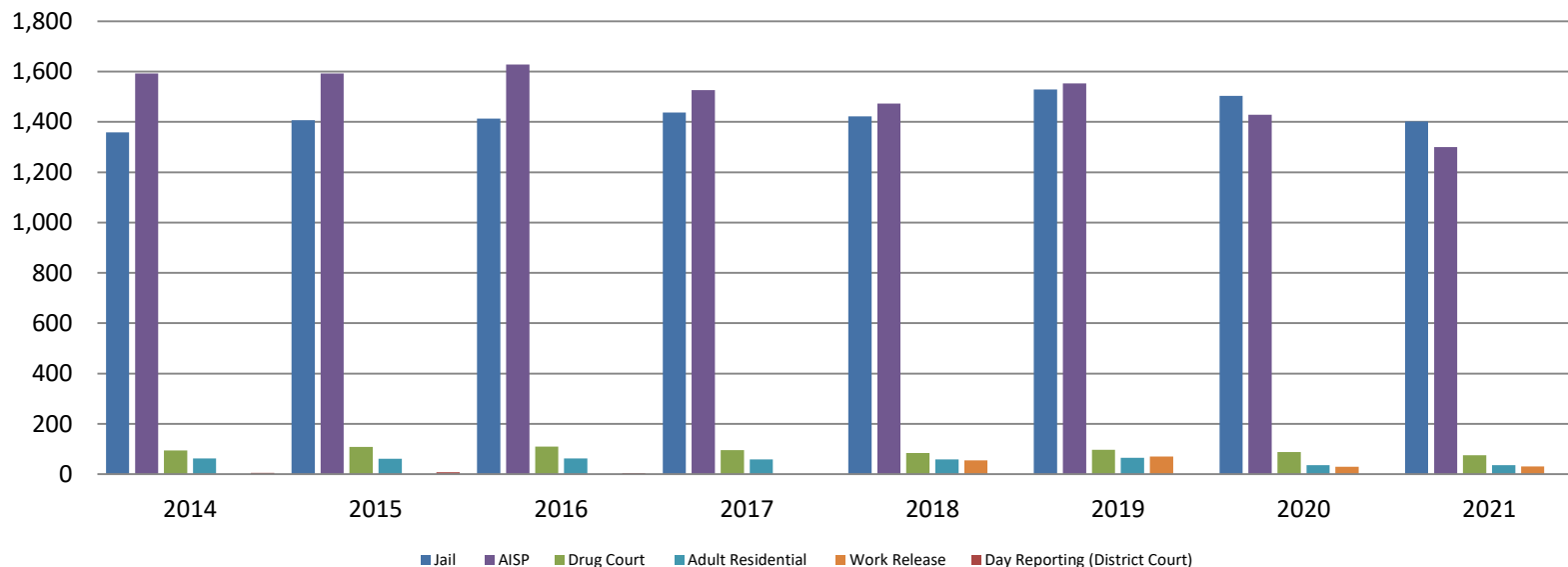


Month Year	Total	YTD Avg.
October 2020	15	33
October 2021	42	31



# Correlation: Total & Sedgwick County Programs (Adult)

## Total Annual ADP 2014 - present

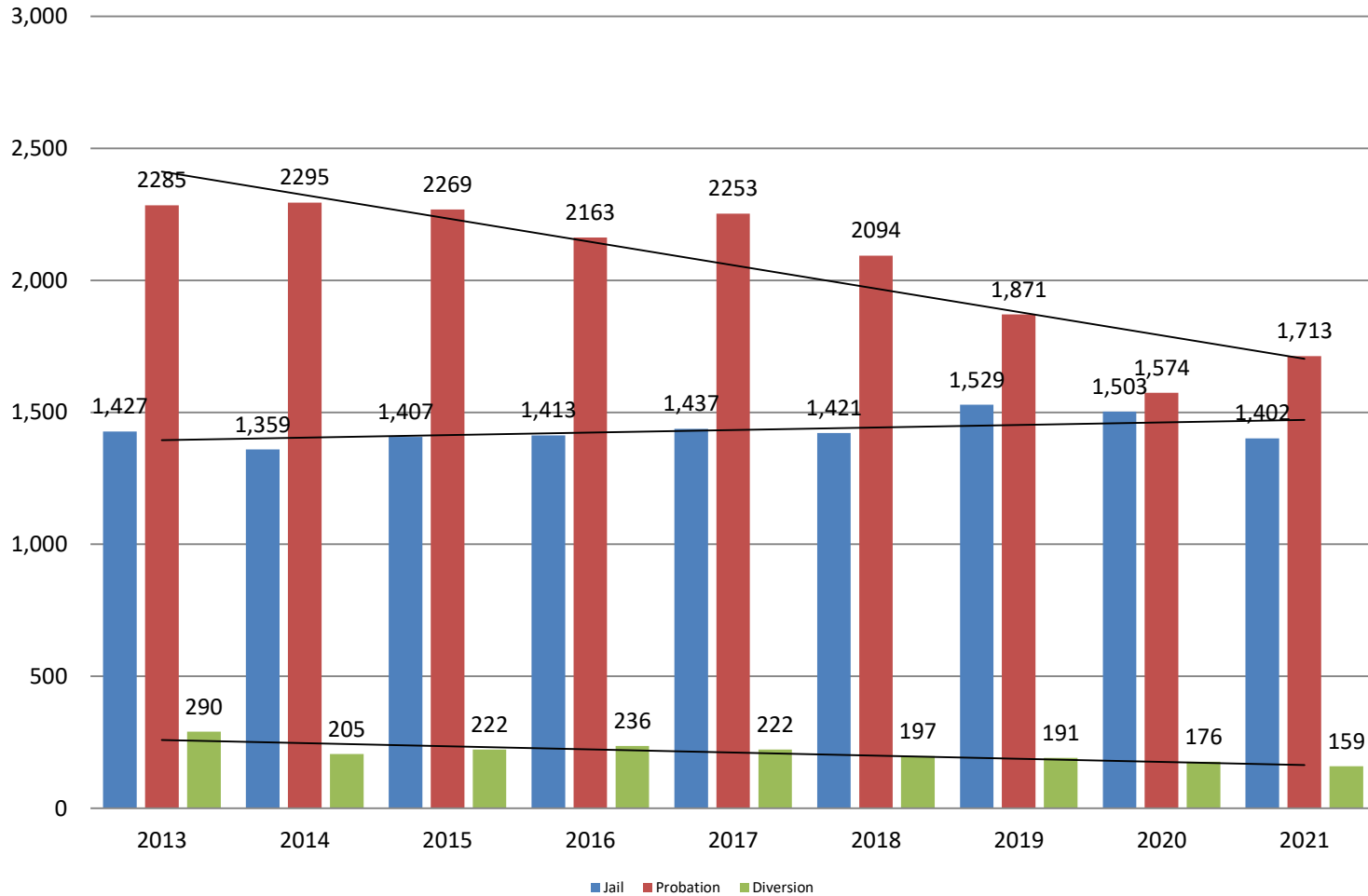


	2019	2020	2021
Jail	1,529	1,503	1,402
AISP	1,553	1,428	1,300
Drug Court	97	88	75
Adult Residential	65	36	36
Work Release	71	30	31
Day Reporting (DC)	0	0	0



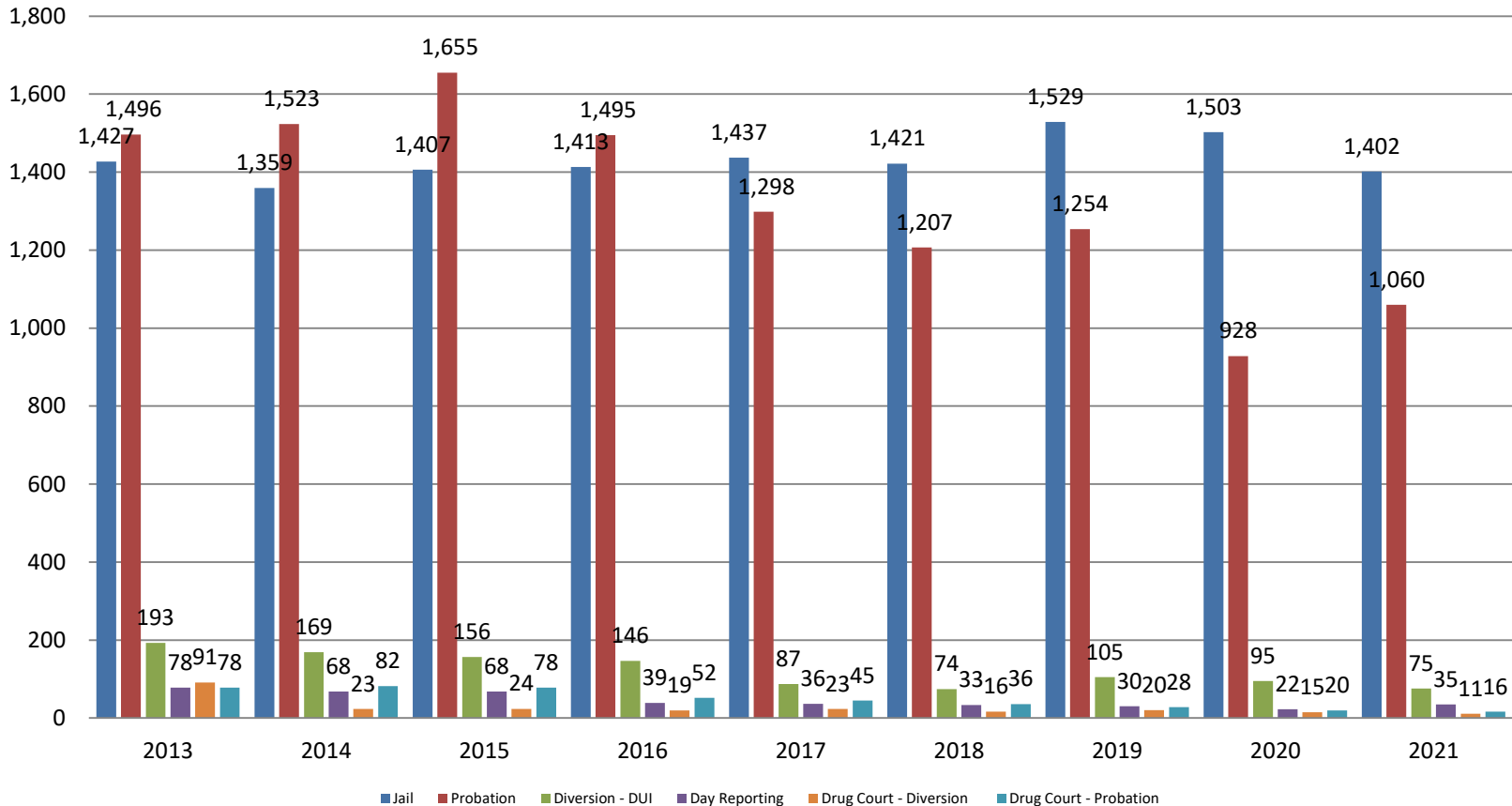
# Correlation: Total & District Court Programs

## Total Annual ADP: 2013 - present



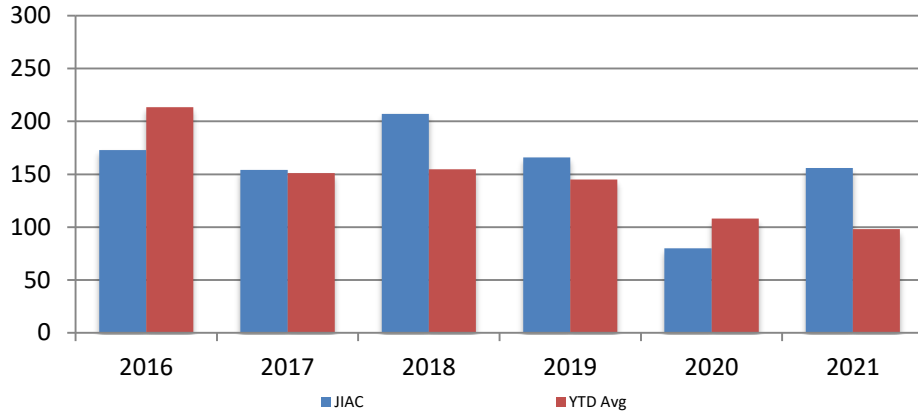
# Correlation: Total & City of Wichita / Municipal Court Programs

## Total Annual ADP: 2013 - present



# Juvenile

**JIAC Intakes  
October 2016 - present**

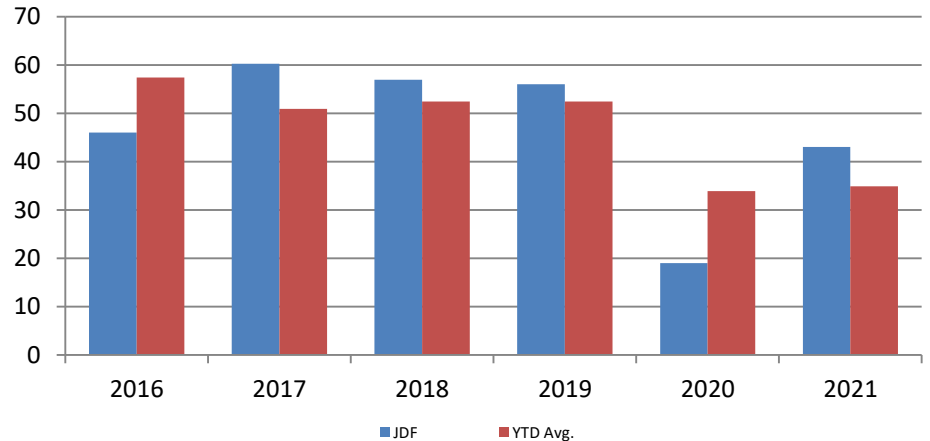


Year	October	October YTD Avg.
2016	173	214
2017	154	151
2018	207	155
2019	166	145
2020	80	108
2021	156	98

**Year      October      October YTD Avg.**

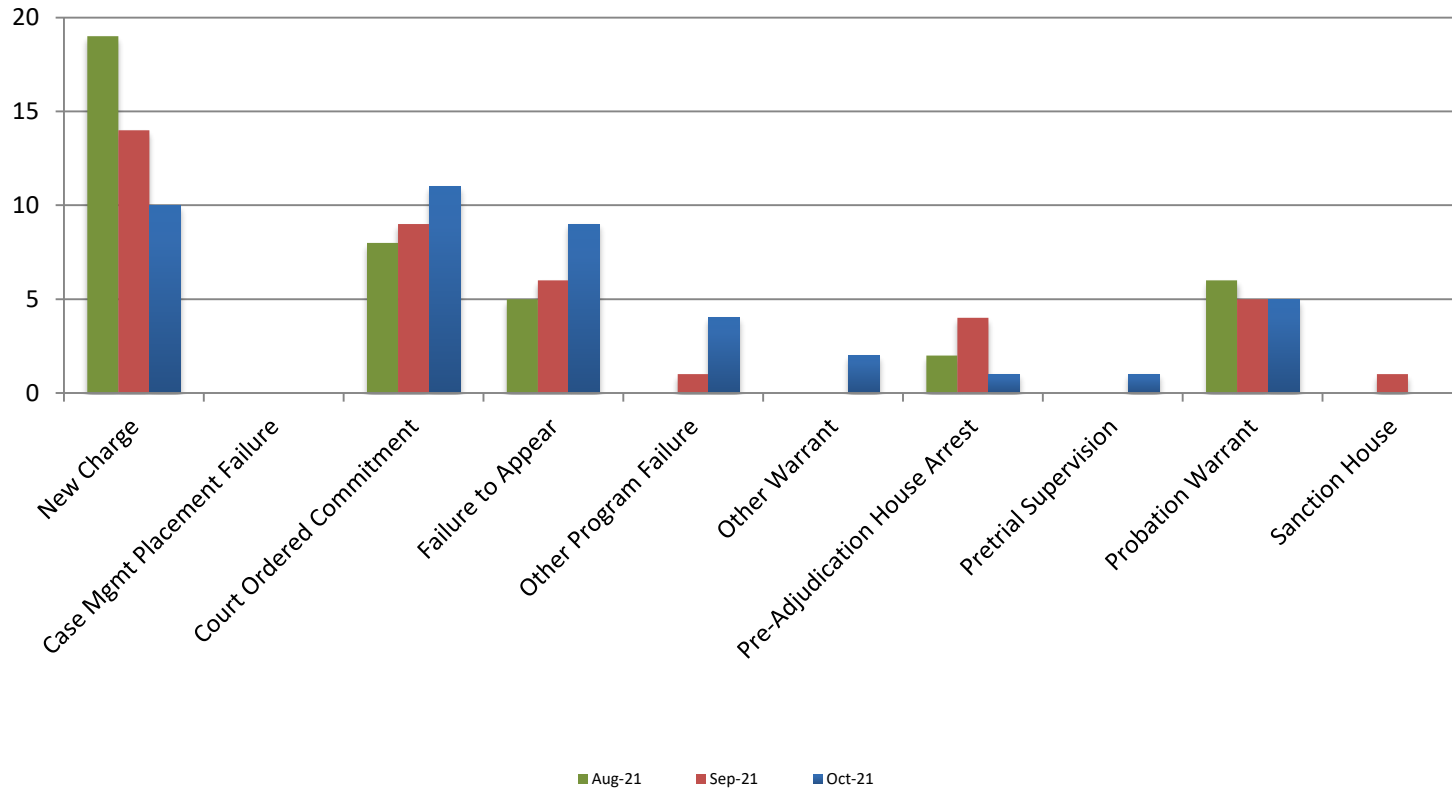
2016	46	57
2017	60	51
2018	57	52
2019	56	52
2020	19	34
2021	43	35

**JDF ADP  
October 2016 - present**





# Reason for JDF Admits



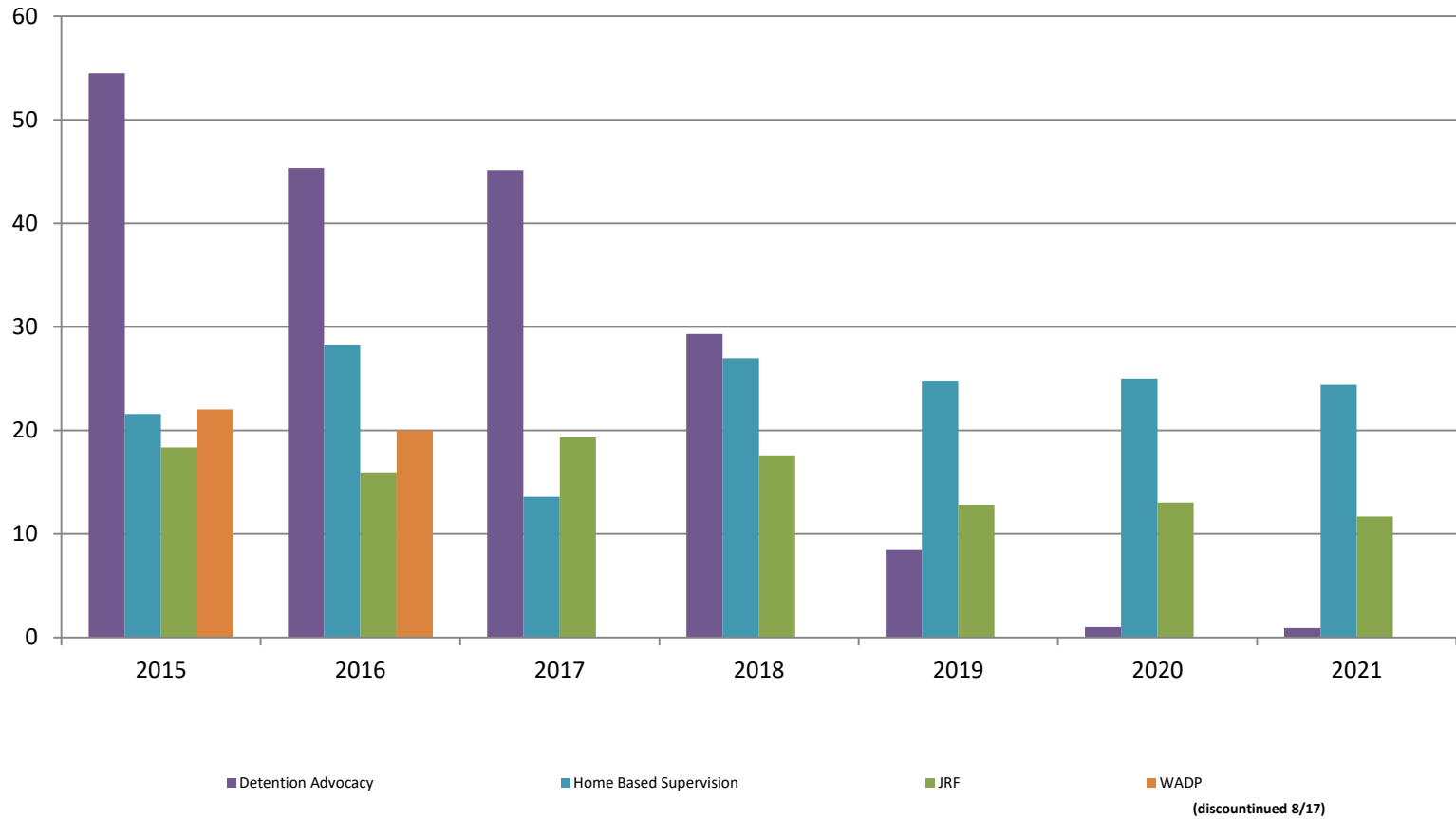
## Reason for JDF Admits

Reason	October 2020	October 2021
New Charges	6	10
Case Management Placement Failures	0	0
Court Ordered Commitment	2	11
Failure to Appear	2	9
Other Program Failure	2	4
Other Warrant	0	2
Pre-Adjudication House Arrest	1	1
Pretrial Supervision	0	1
Probation Warrant	6	5
Sanction House	0	0



# Juvenile Detention Alternatives

ADP: October 2015 - present



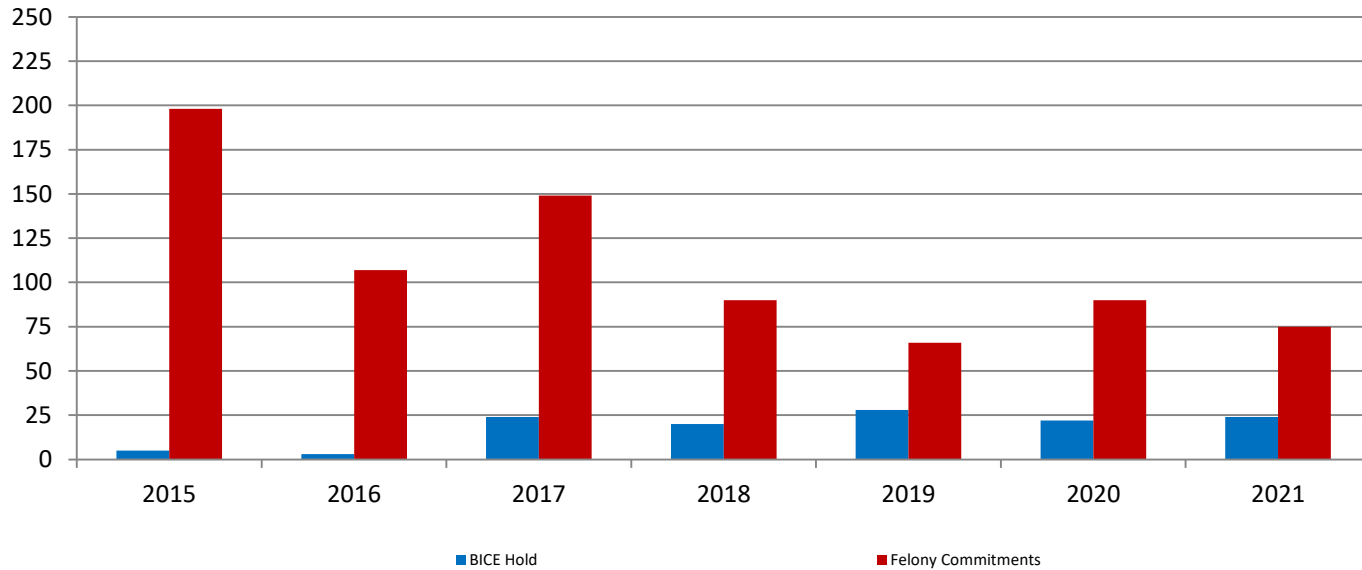
# Juvenile Detention Services

<b>October ADP</b>	<b>2018</b>	<b>2019</b>	<b>2020</b>	<b>2021</b>
Juvenile Detention Facility	57	56	19	43
Juvenile Residential Facility	18	13	13	12
Home Based Supervision	27	25	25	24
Detention Advocacy Case Management Services	29	8	1	1
Weekend Alternative Detention Program (total)	0	N/A	N/A	N/A

<b>October YTD AVERAGE</b>	<b>2018</b>	<b>2019</b>	<b>2020</b>	<b>2021</b>
Juvenile Detention Facility	52	52	34	35
Juvenile Residential Facility	14	15	17	11
Home Based Supervision	25	27	29	23
Detention Advocacy Case Management Services	32	20	9	3
Weekend Alternative Detention Program	0	N/A	N/A	N/A

# Monthly Jail Snapshot: October 2021

Snapshots October 2015 - present



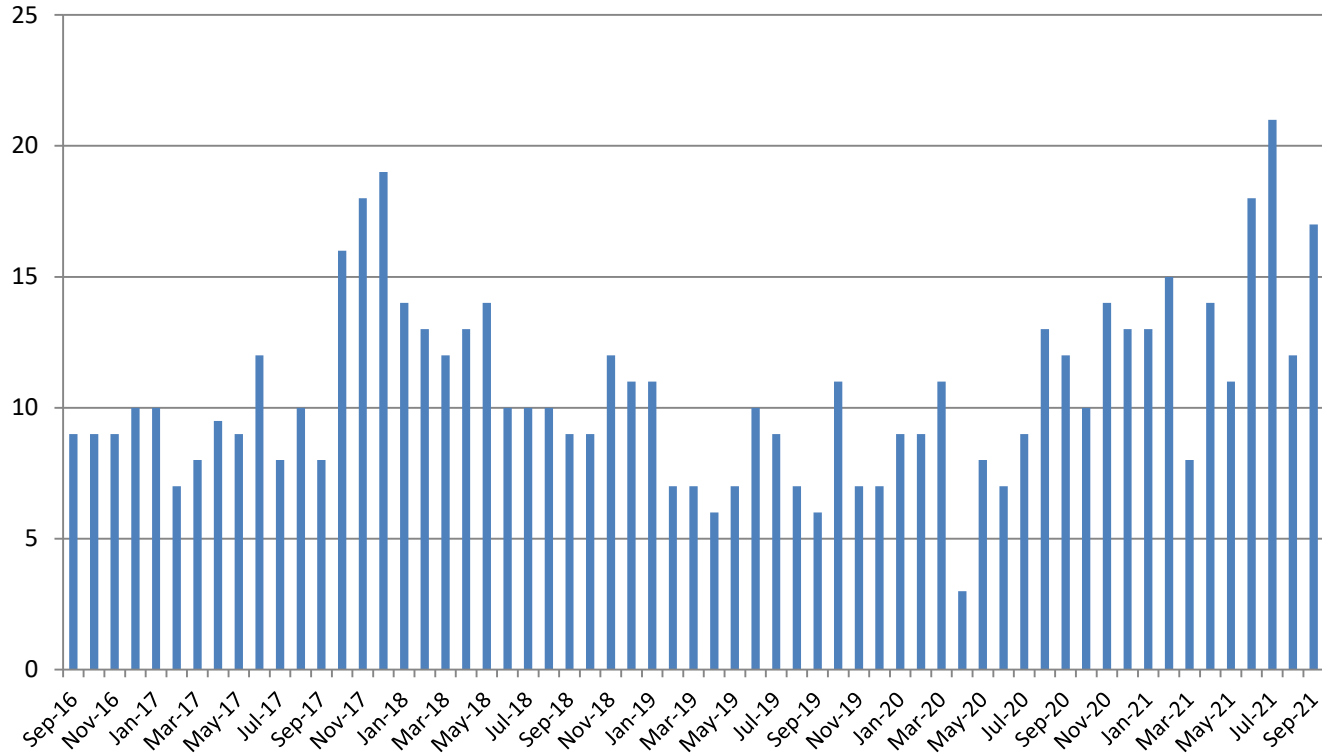
BICE Hold	2015	2016	2017	2018	2019	2020	2021
<b>October</b>	5	3	24	20	28	22	24

Felony Commitments	2015	2016	2017	2018	2019	2020	2021
<b>October</b>	198	107	149	90	66	90	75



## Journal Entry Completion (Average Days) September 2016 - present



<b>September</b>	<b>2016</b>	<b>2017</b>	<b>2018</b>	<b>2019</b>	<b>2020</b>	<b>2021</b>
Avg. Days	9	8	9	6	12	17
YTD Avg.	13	9	12	8	9	14

