

Criminal Justice Coordinating Council

Population Report & Program Trends

January 2022

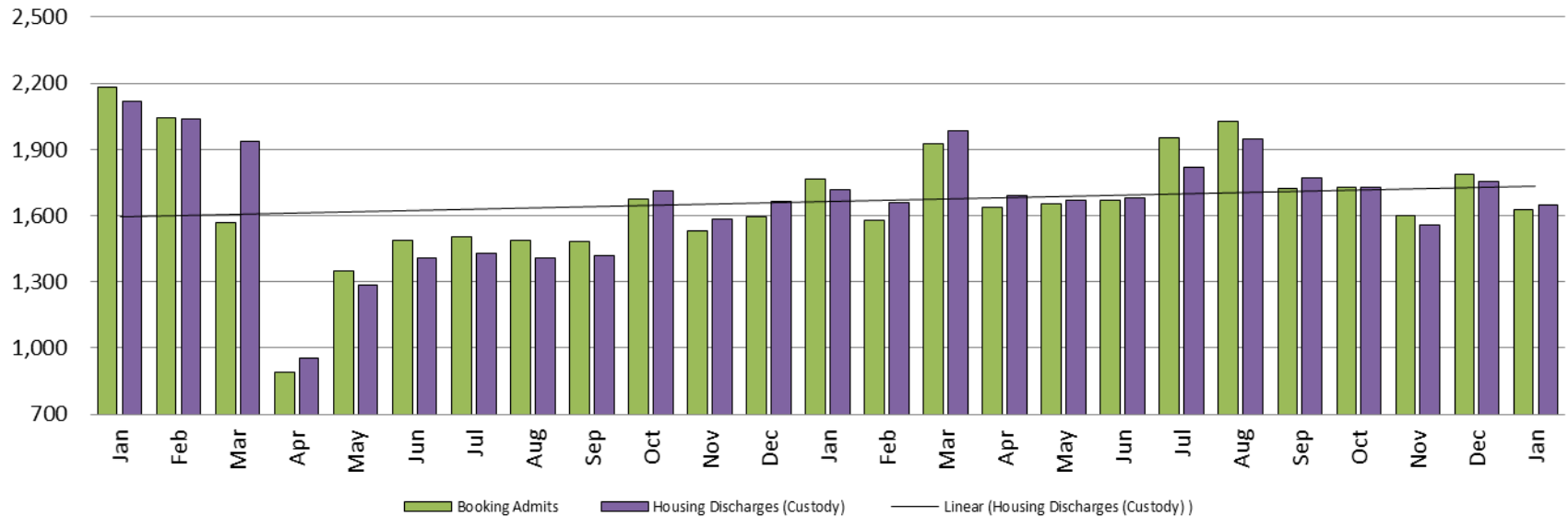


Sedgwick County...
working for you

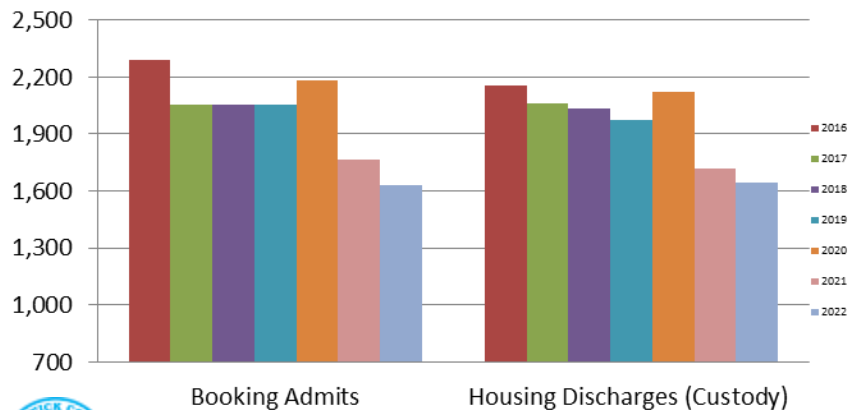
Detention Facility

Booking Admits & Housing Discharges from Custody

January 2020 - present



Bookings Year over Year: Month of January



Bookings January

2020: 2,183

2021: 1,766

2022: 1,629

Housing Discharges January

2020: 2,120

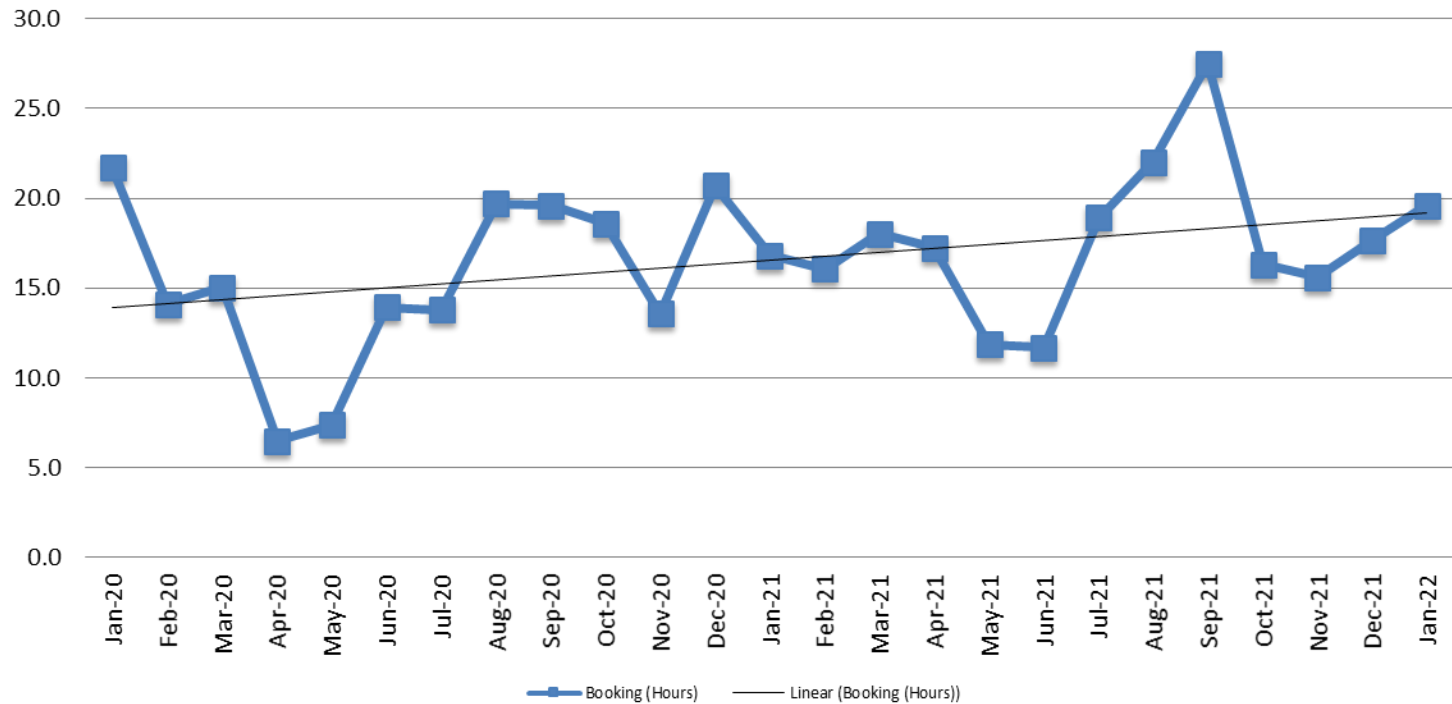
2021: 1,719

2022: 1,646



Sedgwick County...
working for you

Average Length of Stay: Booking (Hours) January 2020 - present

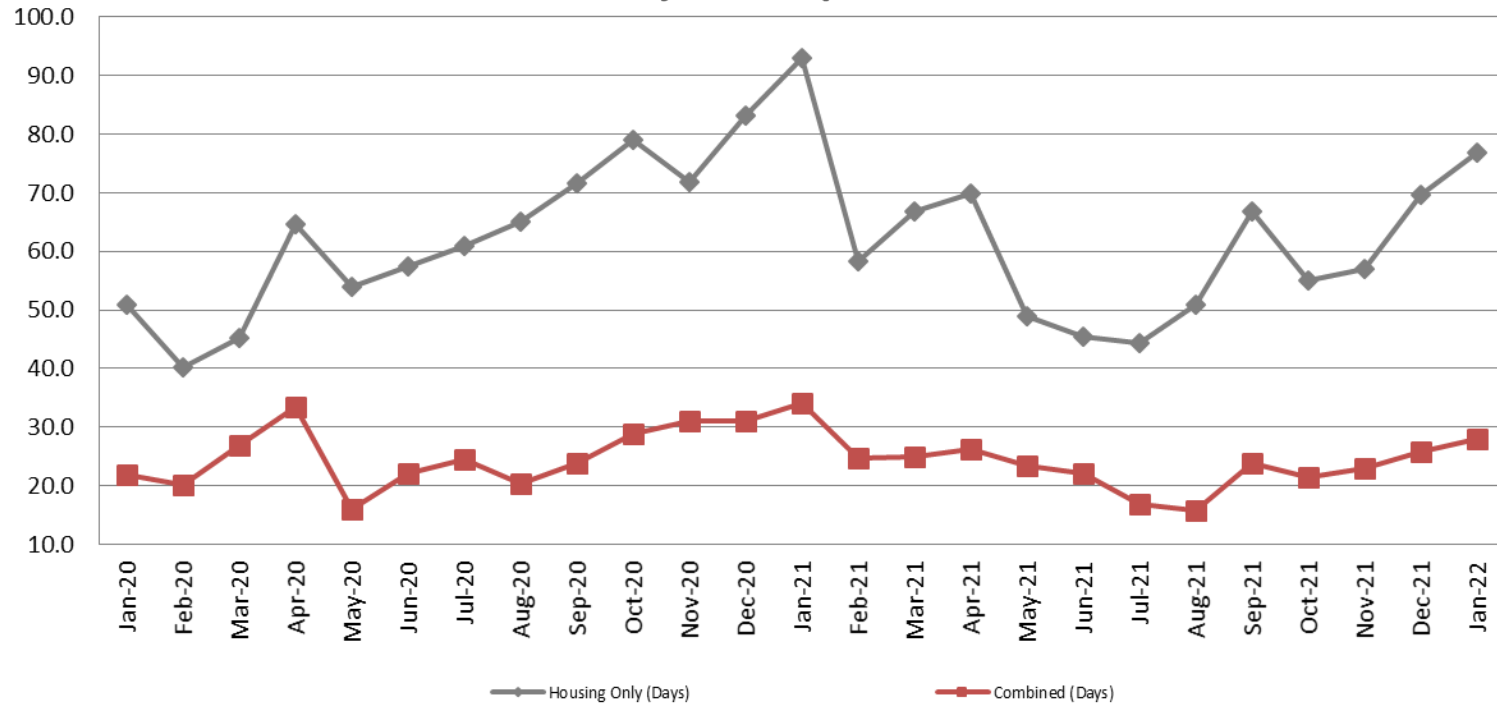


January	January YTD Average
2020: 21.7	2020: 21.7
2021: 16.8	2021: 16.8
2022: 19.6	2022: 19.6



Average Length of Stay: Housing & Combined (Days)

January 2020 - present



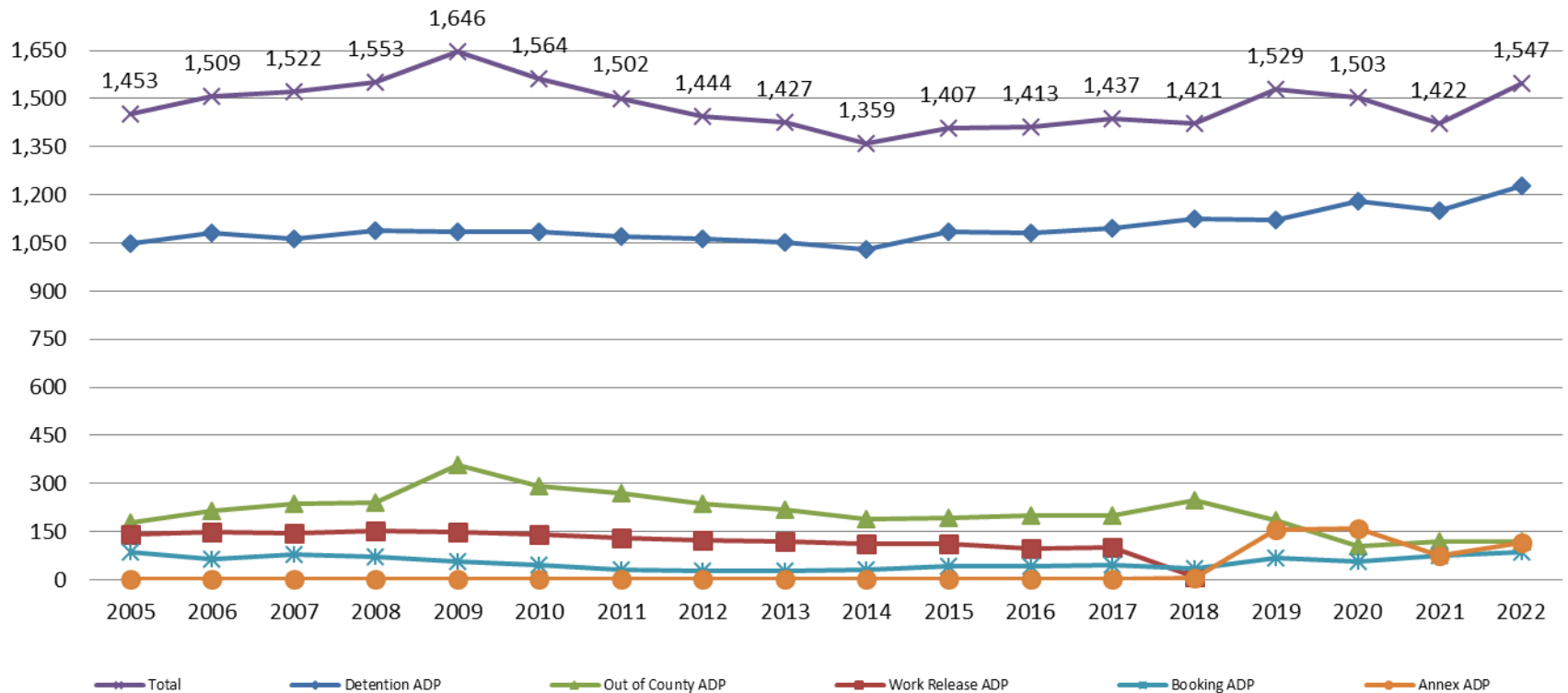
Month Year	Housing Only	Housing YTD AVG	Combined Days	Combined YTD AVG
January 2020	50.8	50.8	21.8	21.8
January 2021	93.0	93.0	34.1	34.1
January 2022	76.8	76.8	27.9	27.9



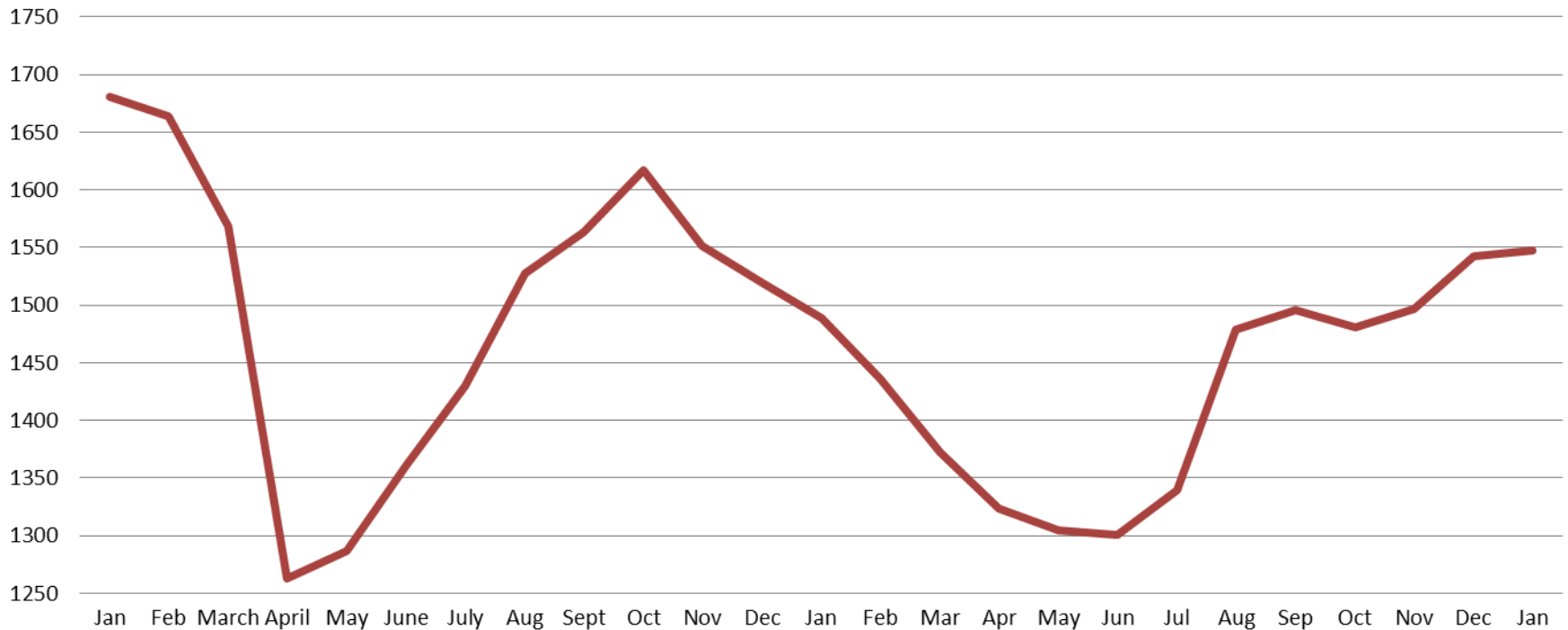
Sedgwick County...
working for you

Jail: Annual Average Daily Population (ADP)

TRENDS: Booking, Detention, Work Release, & Out of County Annual ADP: 2005 - present



TOTAL MONTHLY ADP: JAIL (Booking, Detention Facility, Annex, & Out of County) January 2020 - present



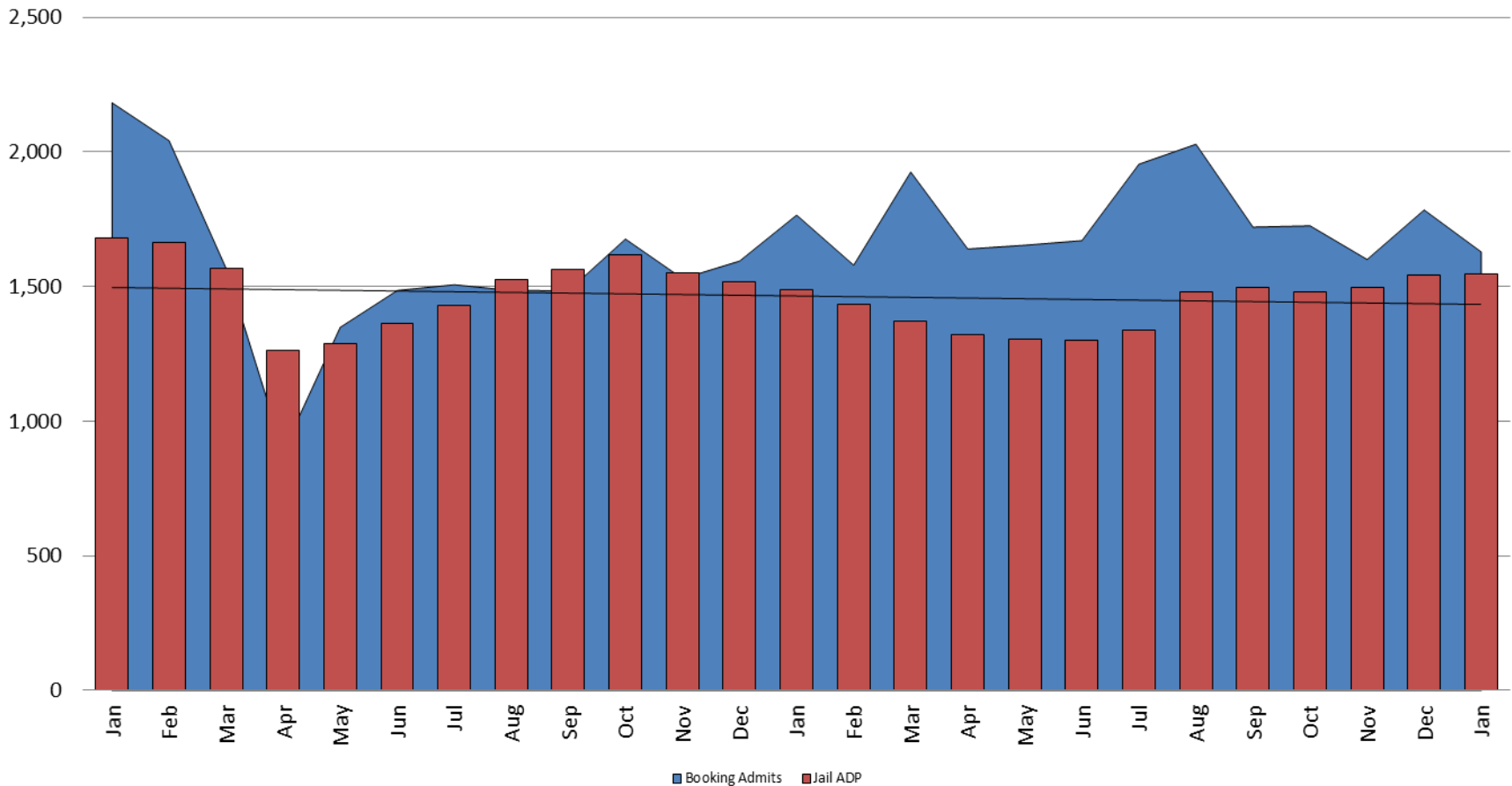
January 2020	January 2021	January 2022
1,681	1,488	1,547



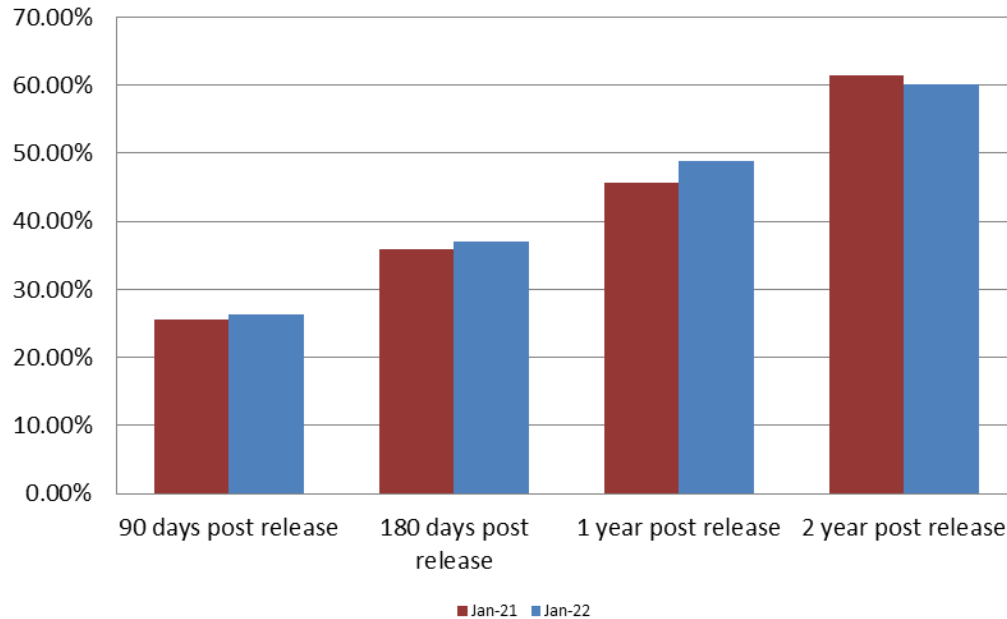
Sedgwick County...
working for you

*Beginning January 2018, Work Release program began transfer to Division of Corrections
This slide shows total monthly ADP for individuals in booking, detention, work release, jail annex, and out-of county (combined)
(data obtained from detention facility)

Booking Admits & Total Monthly ADP (Jail): January 2020 - present



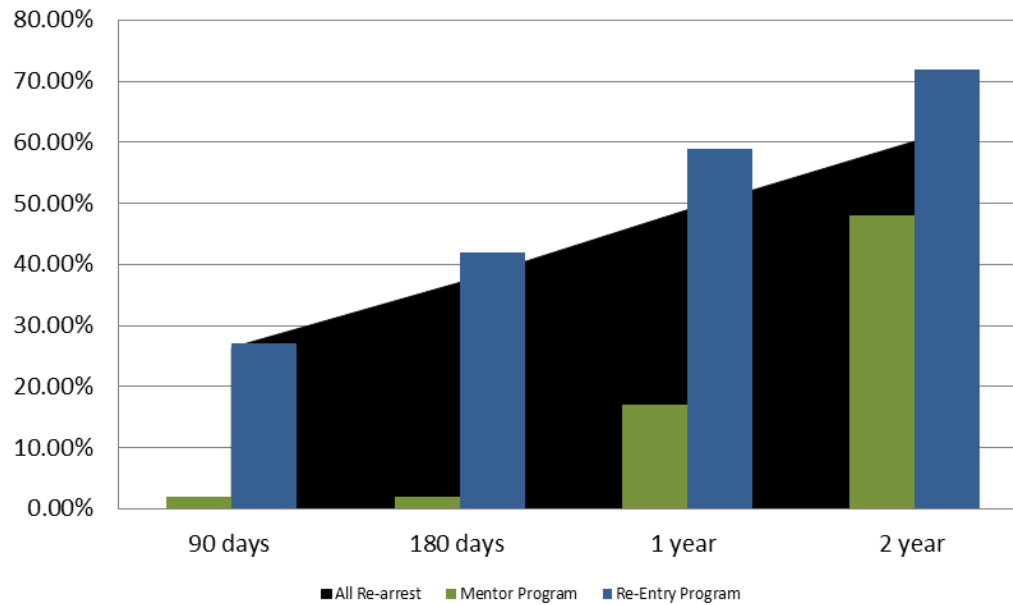
Percent of Released Inmates Rearrested January



Month Year	90 Days	180 Days	1 Year	2 Years
January 2021	25.63%	35.85%	45.59%	61.37%
January 2022	26.38%	37.06%	48.95%	60.19%



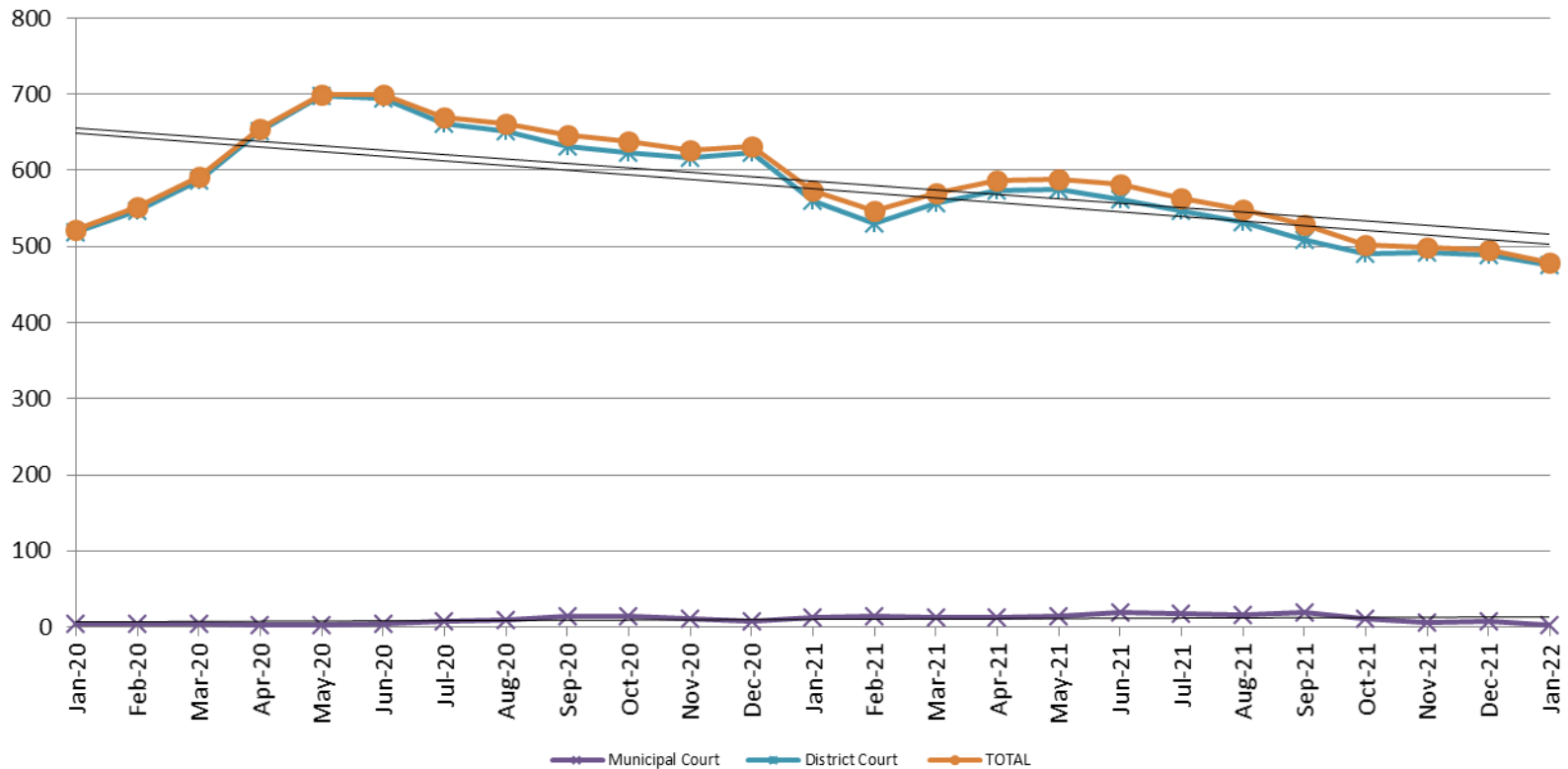
Recidivism by Programs January 2022



January 2022	90 Days	180 Days	1 year	2 years
All Re-arrests	26.38%	37.06%	48.95%	60.19%
Mentor Program	2%	2%	17%	48%
Re-Entry Program	27%	42%	59%	72%



Pretrial Services Program (PSP) Monthly ADP: January 2020 - present

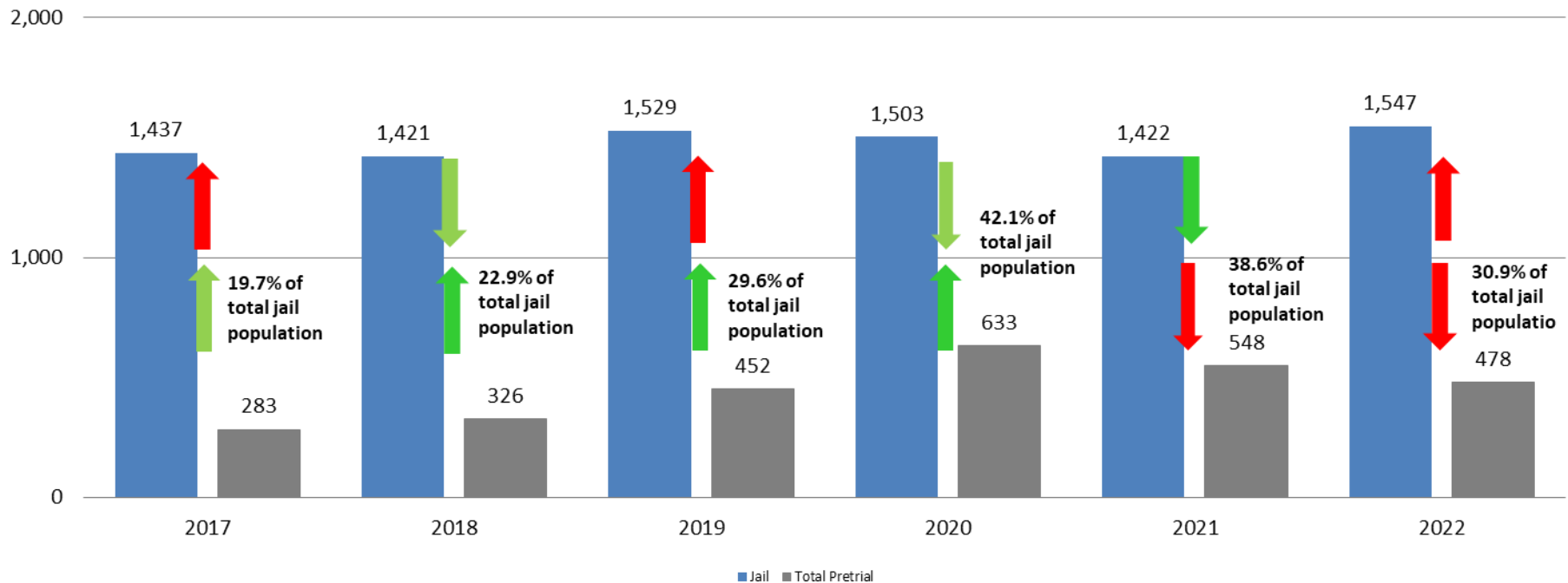


January	2020 ADP	2021 ADP	2022 ADP	2020 YTD Avg.	2021 YTD Avg.	2022 YTD Avg.
Muni. Court	4	13	2	4	13	2
Dist. Court	518	560	476	518	560	476
Total	522	573	478	522	573	478



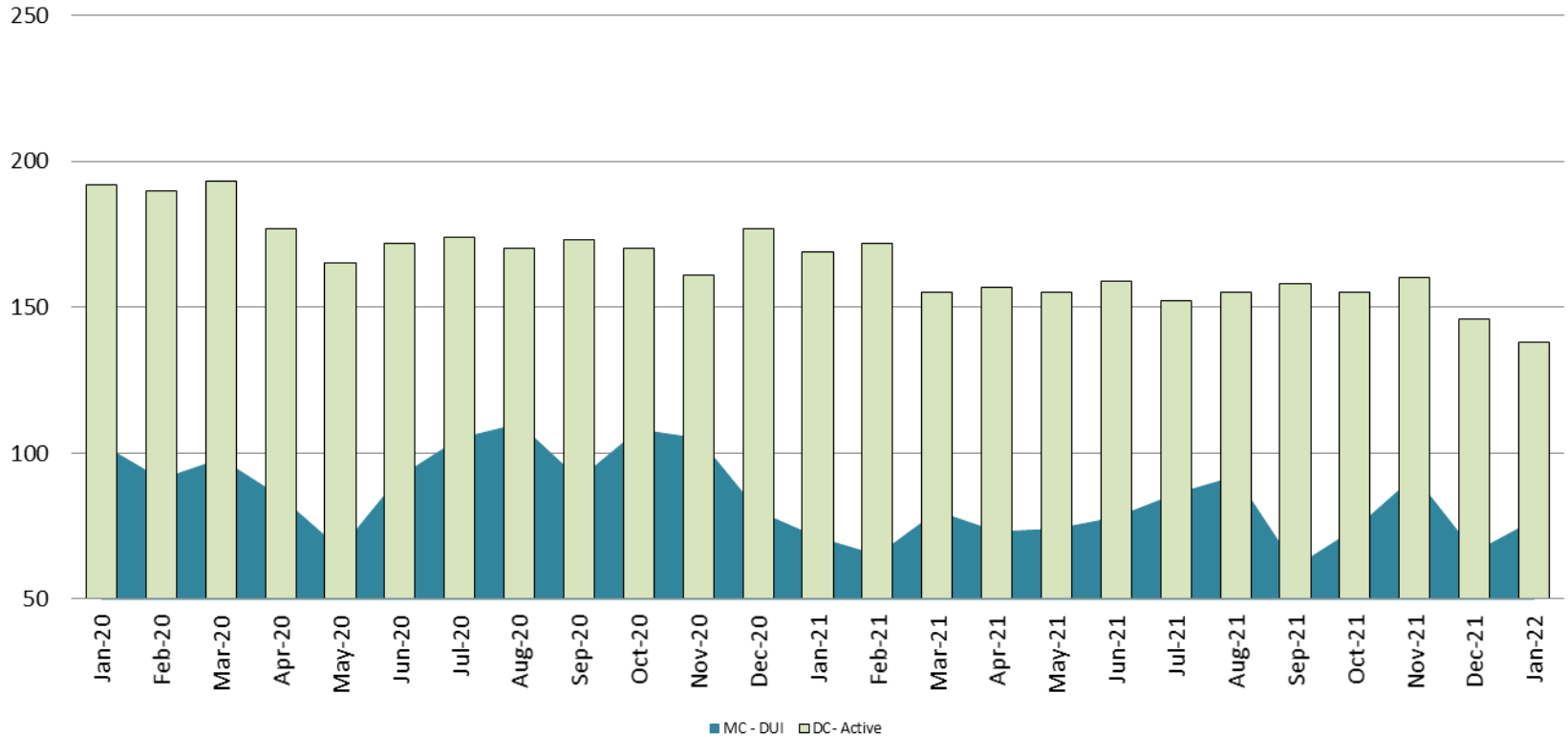
Correlation: Total & PSP

Total Annual ADP: 2017 - present



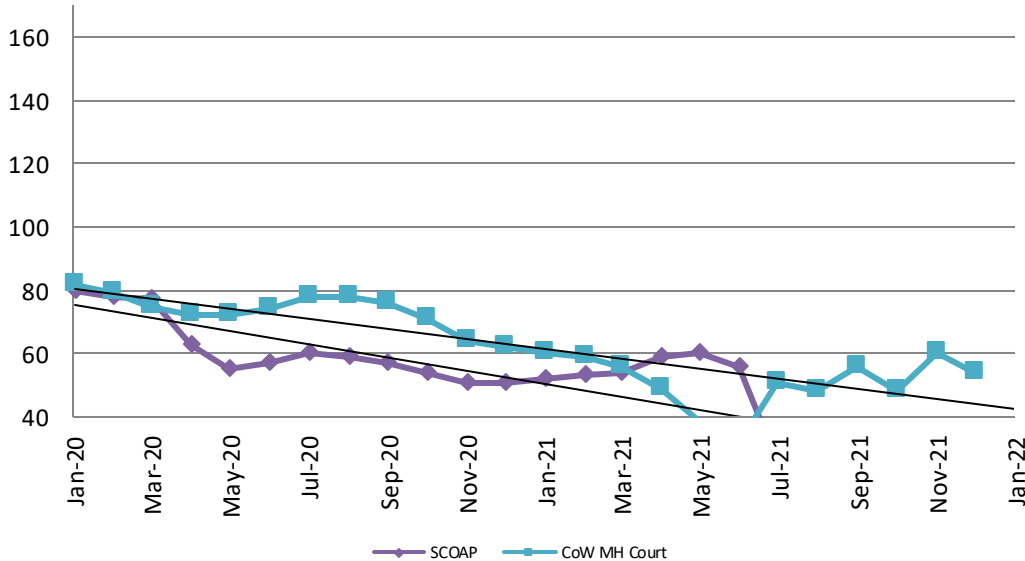
Diversion - Active Caseload

January 2020 - present

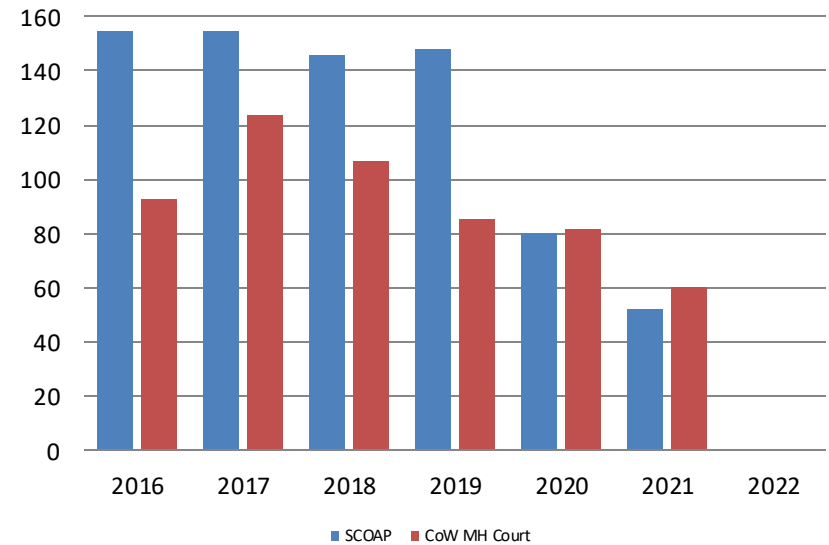


January	2020	2021	2022	2020 YTD Avg.	2021 YTD Avg.	2022 YTD Avg.
Muni. Court- DUI	103	71	77	103	71	77
Dist. Court- Active	192	169	138	192	169	138

Mental Health - ADP January 2020 - present

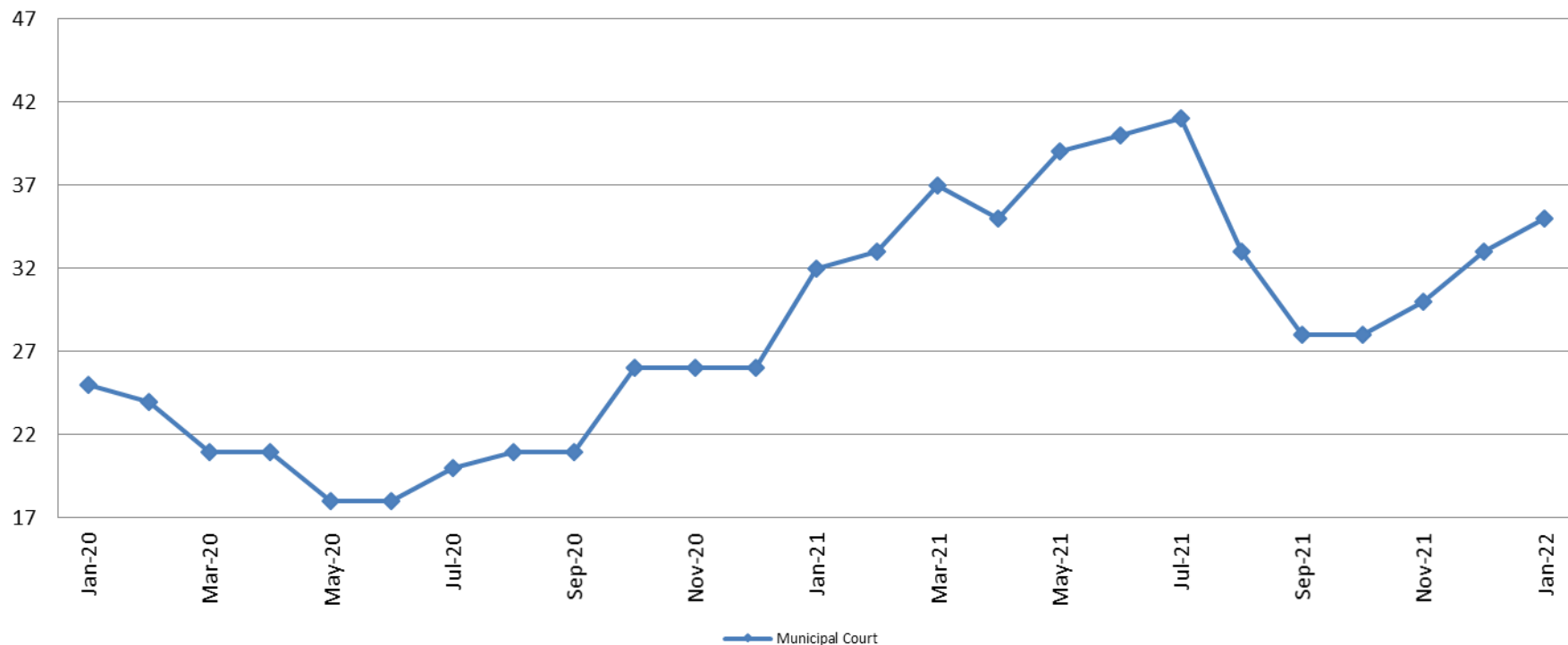


Mental Health ADP Year over Year - January



January	2020 ADP	2021 ADP	2022 ADP	2020 YTD Avg.	2021 YTD Avg.	2022 YTD Avg.
SCOAP	80	52	N/A	80	52	N/A
MH Court	82	60	N/A	82	60	N/A

Day Reporting - Active Caseload January 2020 - present



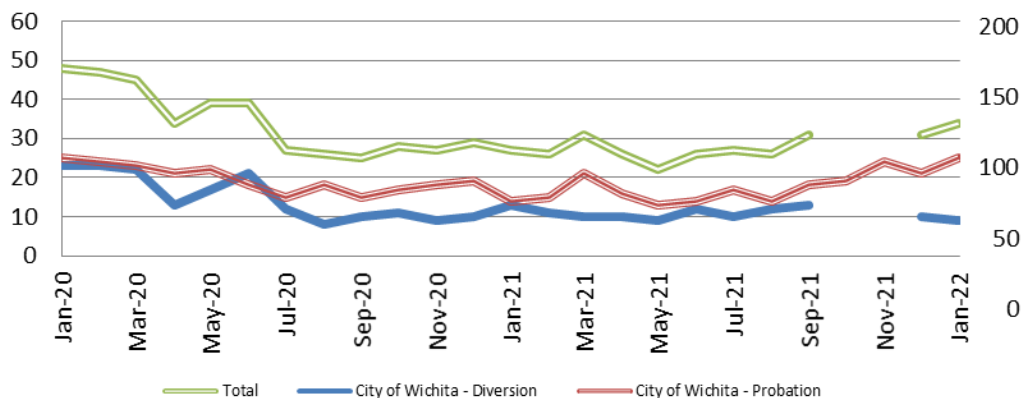
January	2017	2018	2019	2020	2021	2022
Muni. Court	35	40	28	25	32	35
Muni. Court YTD Avg.	35	40	28	25	32	35



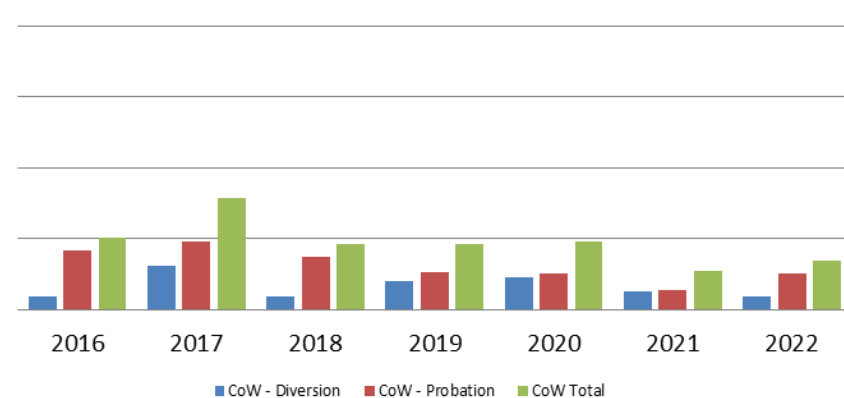
Sedgwick County...
working for you

*District Court funding ended on 6/30/2016
(data obtained from DRC)

Drug Court - City of Wichita ADP: January 2020 - present



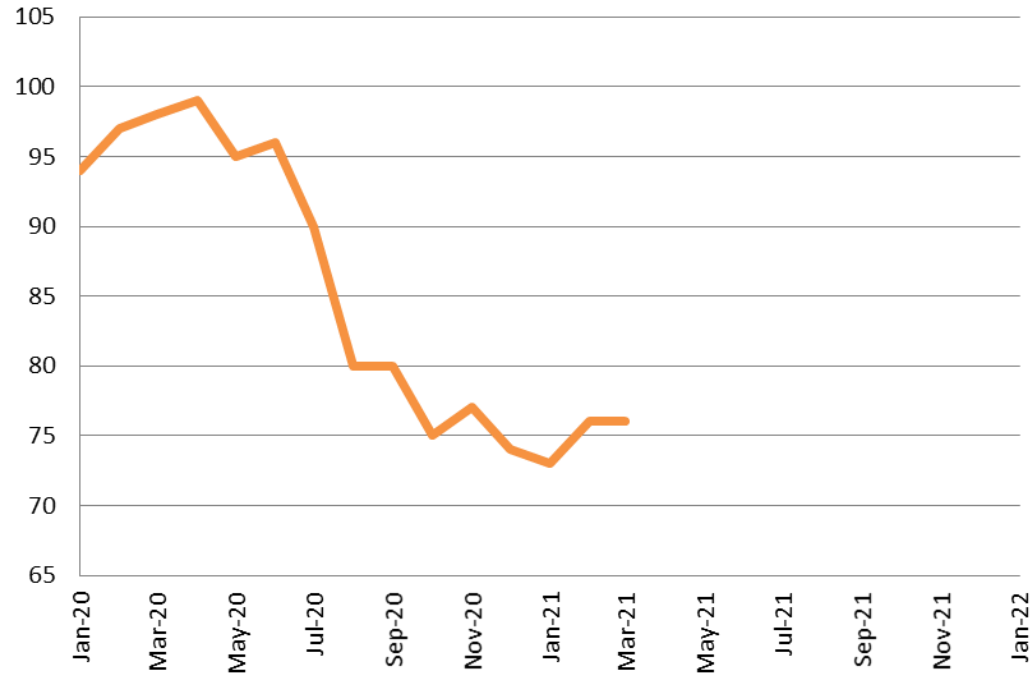
Drug Court- City of Wichita Year over Year - January



January	2020	2021	2022
Diversion	23	13	9
Probation	25	14	25
Total	48	27	34



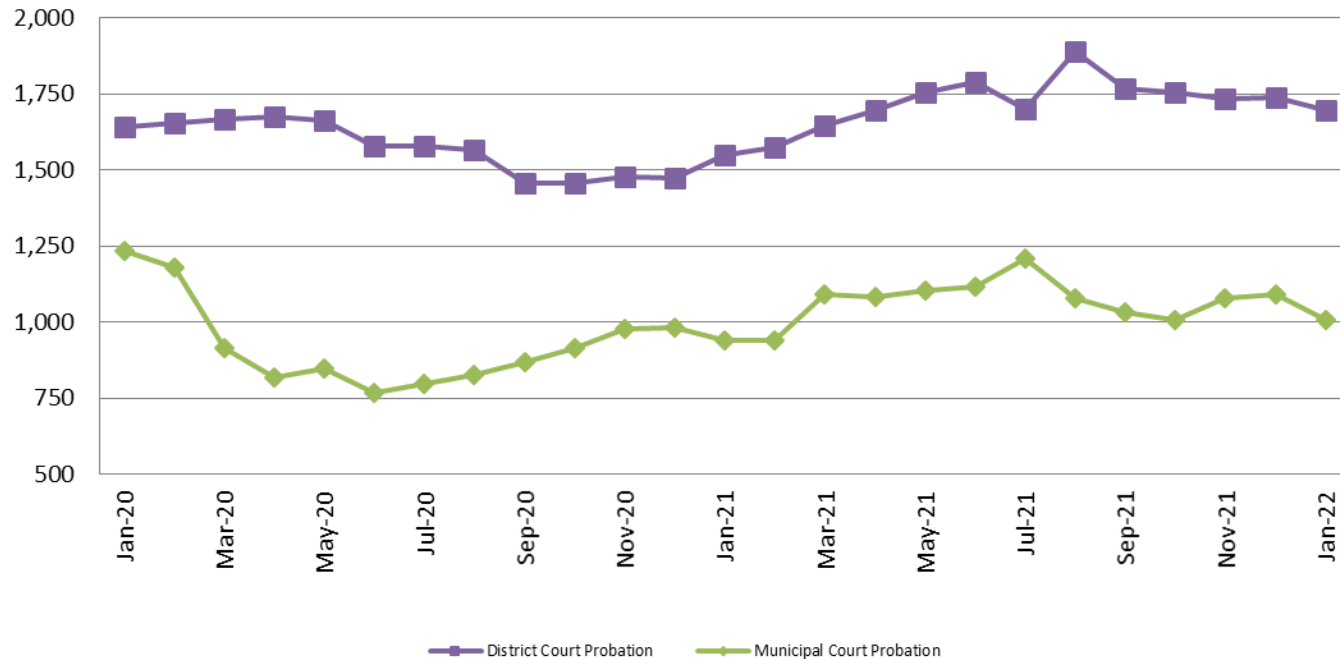
Drug Court - Sedgwick County ADP: January 2020 - present



January	2020	2021	2022
Sedg. Co. ADP	94	73	N/A
YTD Avg.	94	73	N/A



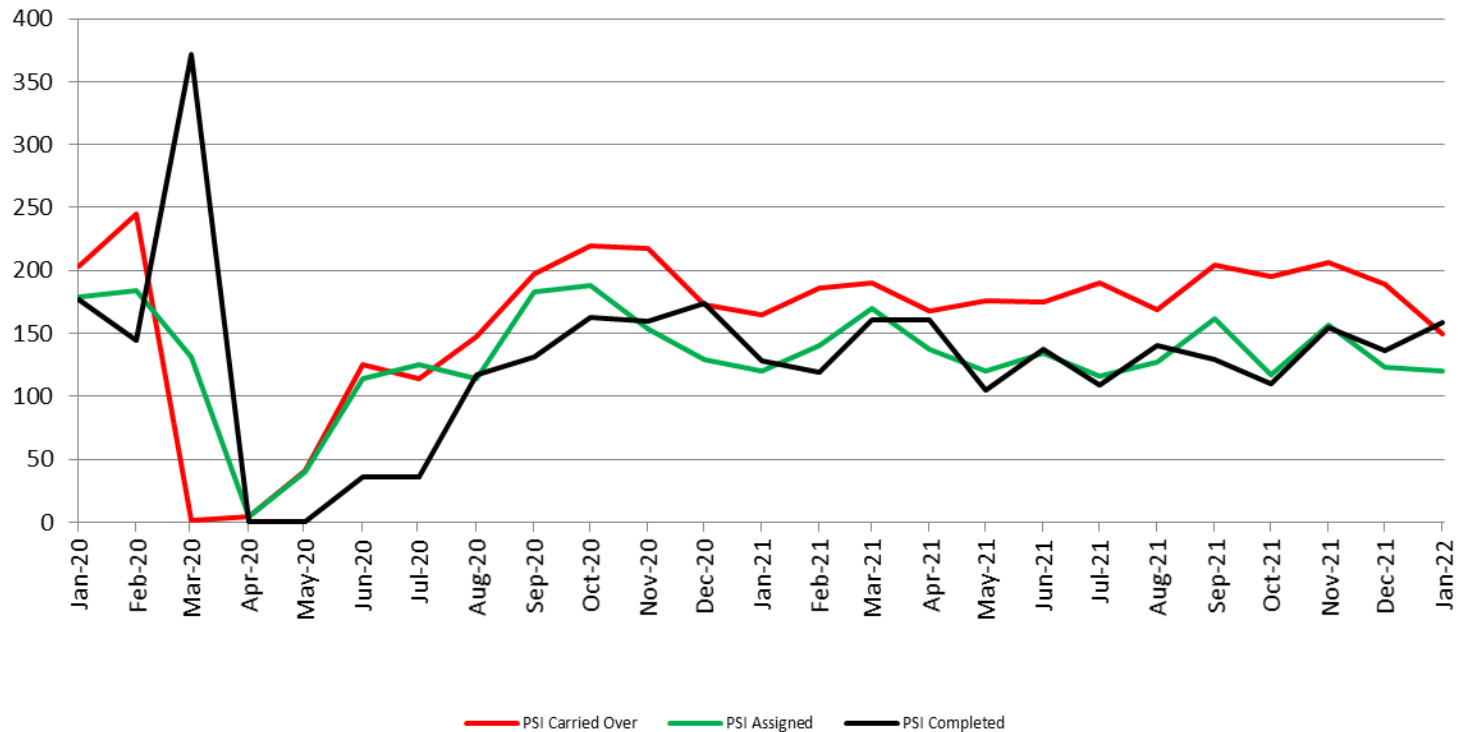
Probation - Active Caseloads January 2020 - present



January	2020	2021	2022	2020 YTD Avg.	2021 YTD Avg.	2022 YTD Avg.
Dist. Court Probation	1,640	1,551	1,695	1,640	1,551	1,695
Muni. Court Probation	1,233	940	1,007	1,233	940	1,007



District Court Probation: Pre-Sentence Investigation January 2020 - present

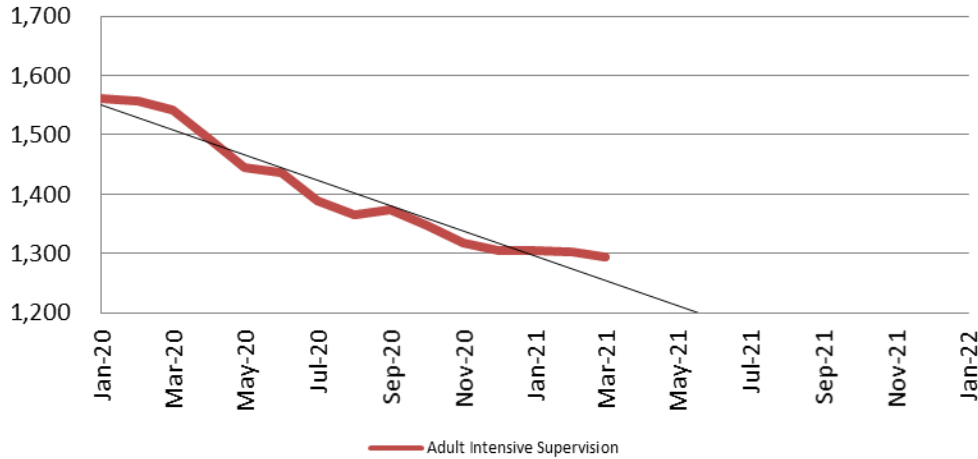


January	2020	2021	2022
Carried Over	203	165	150
Assigned	179	120	120
Completed	177	128	159



Community Corrections

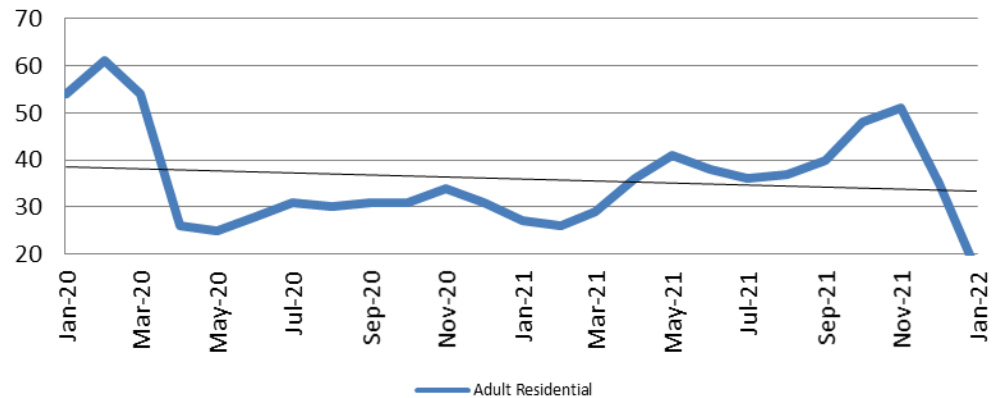
**Adult Intensive Supervision Probation (AISP):
ADP January 2020 - present**



Year	January	January YTD Avg.
2020	1,562	1,562
2021	1,304	1,304
2022	N/A	N/A

**Adult Residential: ADP
January 2020 - present**

Year	January	January YTD Avg.
2020	54	54
2021	27	27
2022	16	16



Community Corrections

Work Release: ADP January 2021 - present

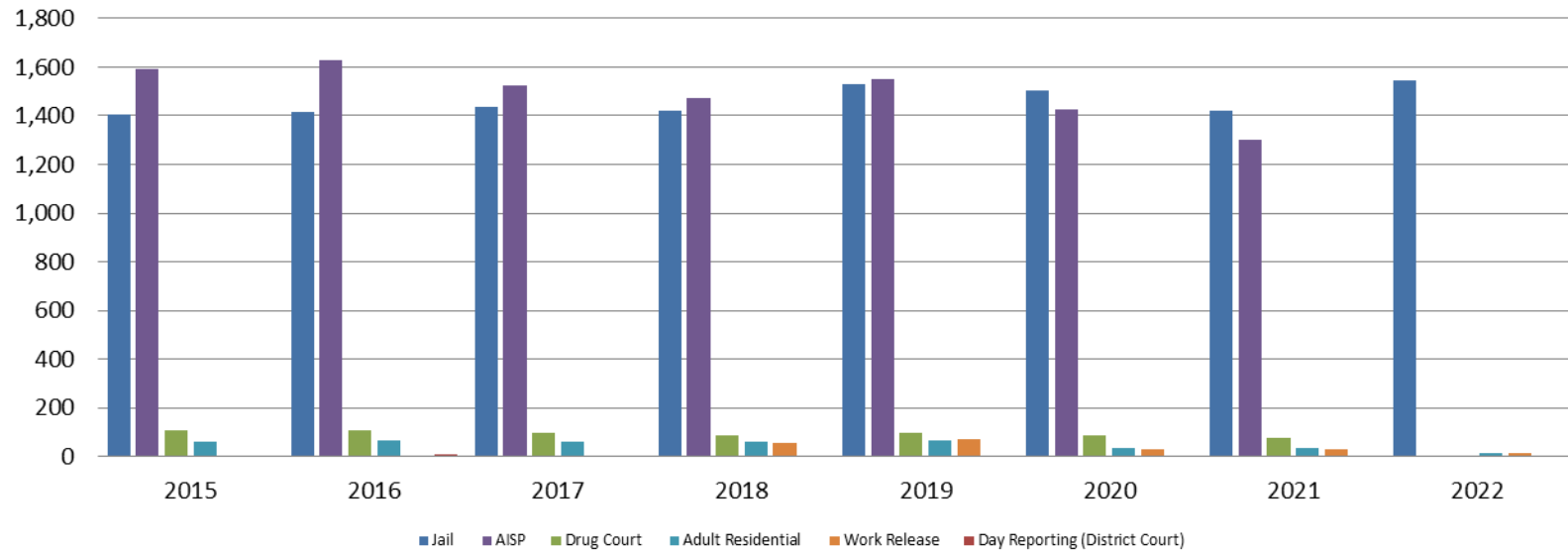


Month Year	Total	YTD Avg.
January 2021	21	21
January 2022	14	14



Correlation: Total & Sedgwick County Programs (Adult)

Total Annual ADP 2015 - present



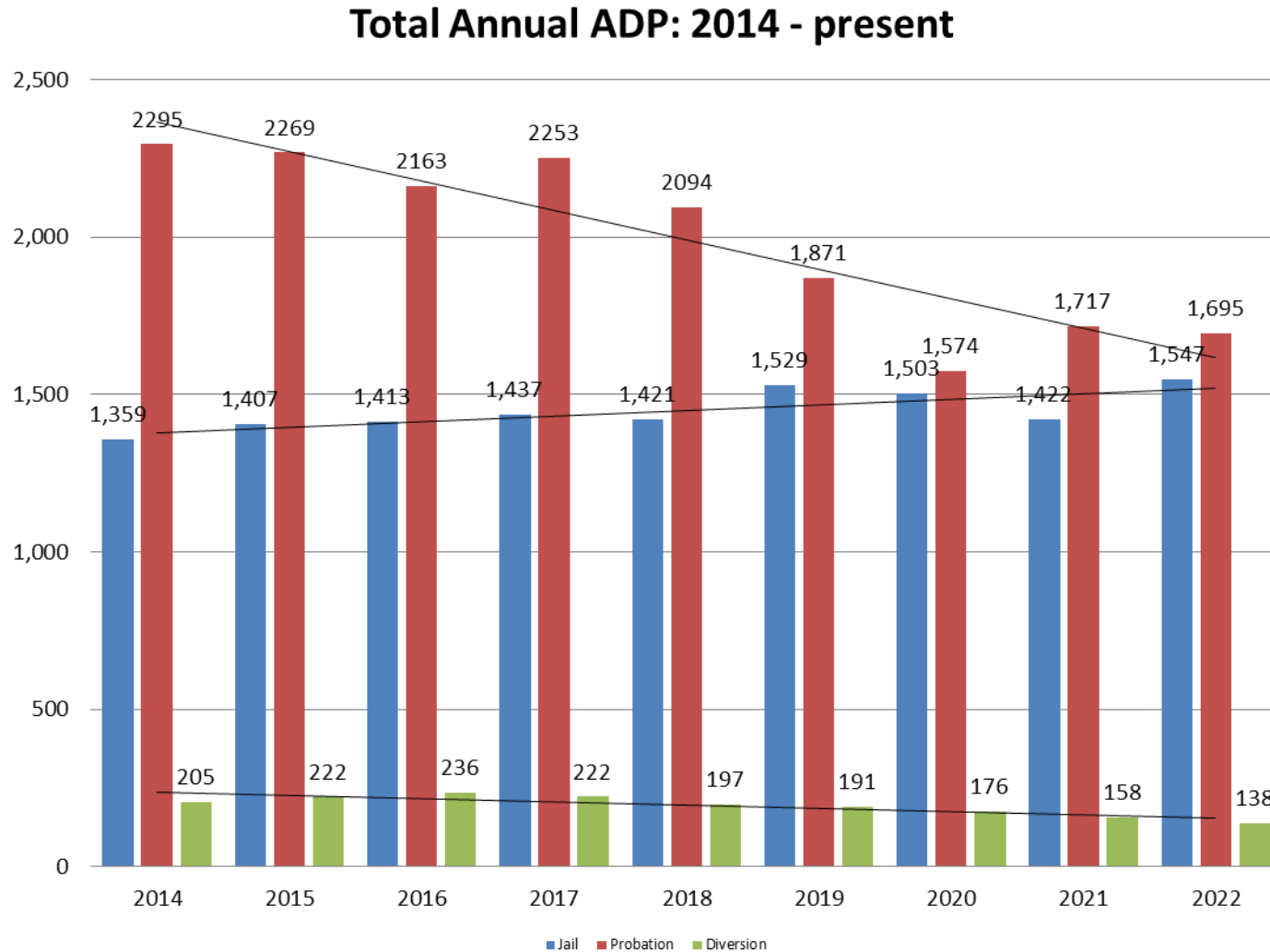
	2020	2021	2022
Jail	1,503	1,422	1,547
AISP	1,428	1,300	0
Drug Court	88	75	0
Adult Residential	36	37	16
Work Release	30	30	14
Day Reporting (DC)	0	0	0



Sedgwick County...
working for you

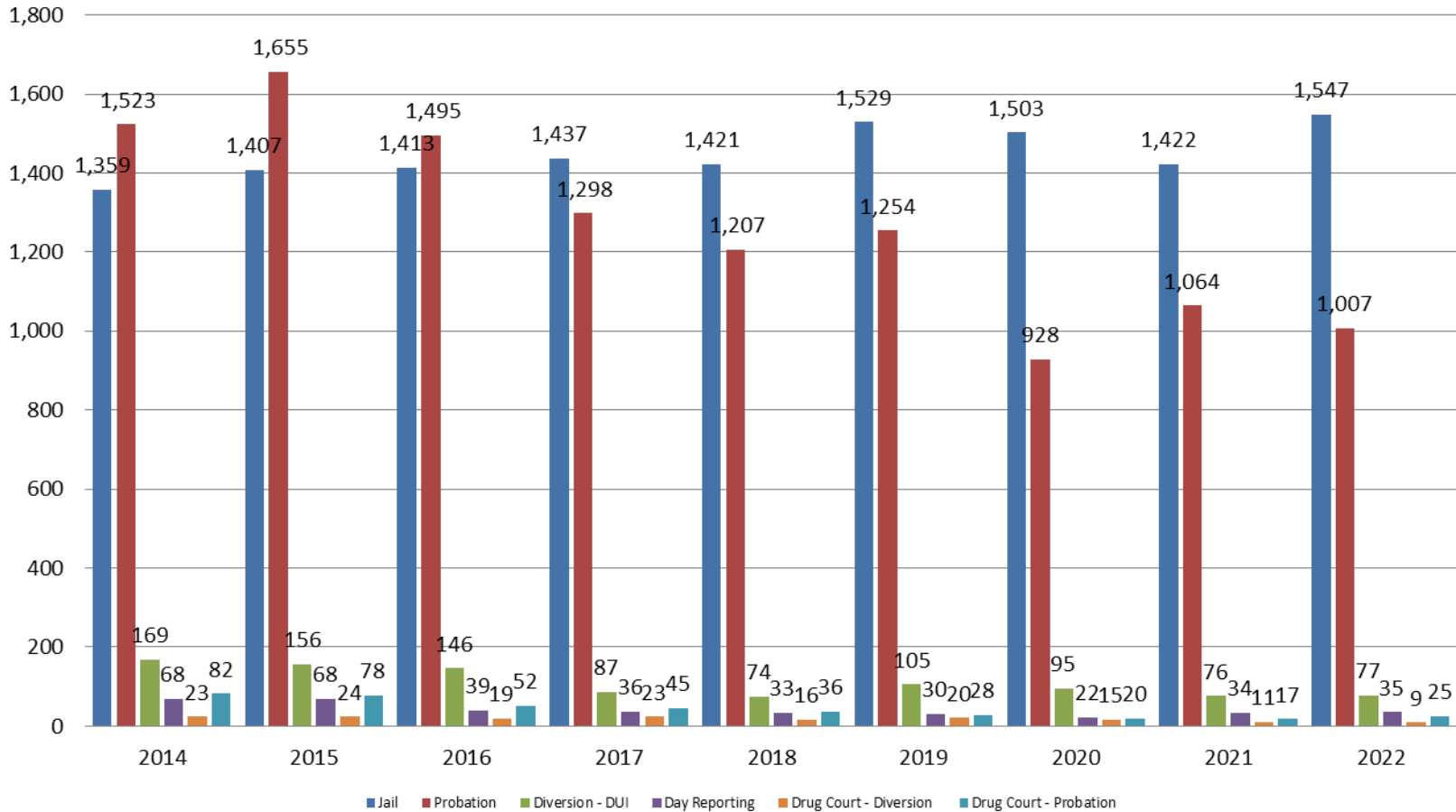
Jail includes individuals in booking, detention, work release and out-of county (combined)
(data obtained from detention facility, SG Dept. of Corrections, Pretrial Services, & CoW)

Correlation: Total & District Court Programs



Correlation: Total & City of Wichita / Municipal Court Programs

Total Annual ADP: 2014 - present

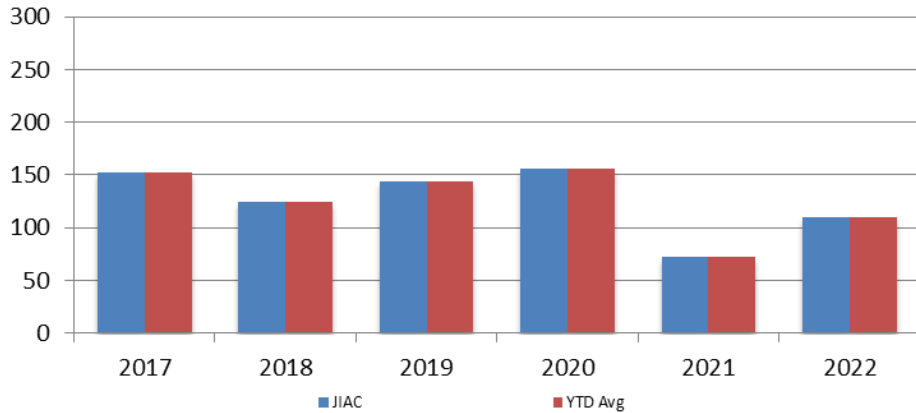


Sedgwick County...
working for you

Jail includes individuals in booking, detention, work release and out-of county (combined)
(data obtained from detention facility, CoW, & Pretrial Services)

Juvenile

JIAC Intakes
January 2017 - present



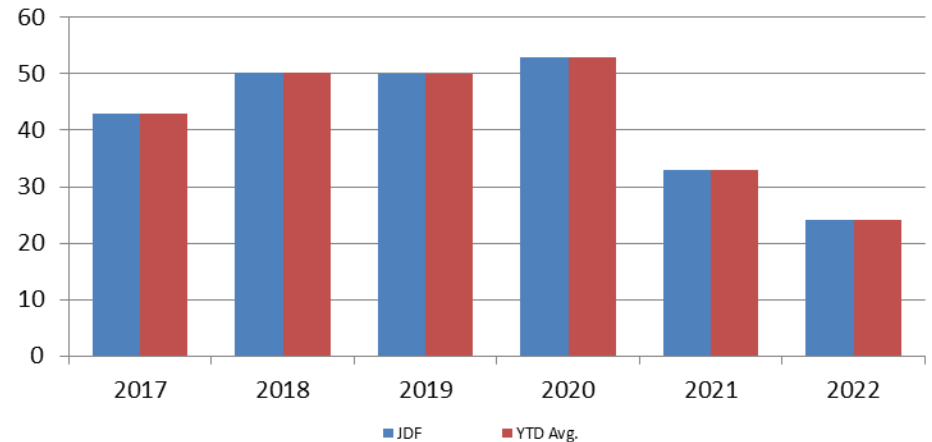
Year **January** **January YTD Avg.**

2017	43	43
2018	50	50
2019	50	50
2020	53	53
2021	33	33
2022	24	24

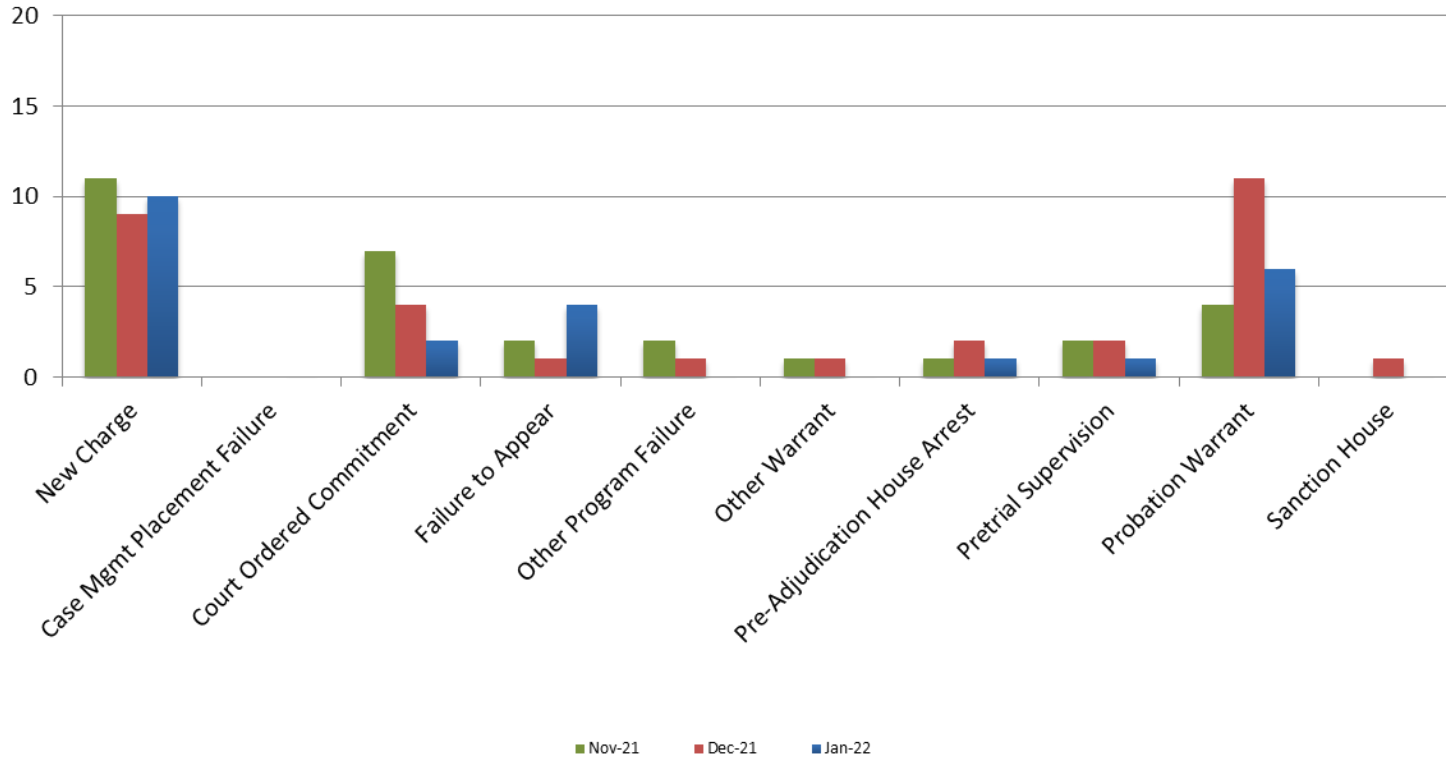
Year **January** **January YTD Avg.**

2017	152	152
2018	124	124
2019	144	144
2020	156	156
2021	72	72
2022	110	110

JDF ADP
December 2017 - present



Reason for JDF Admits



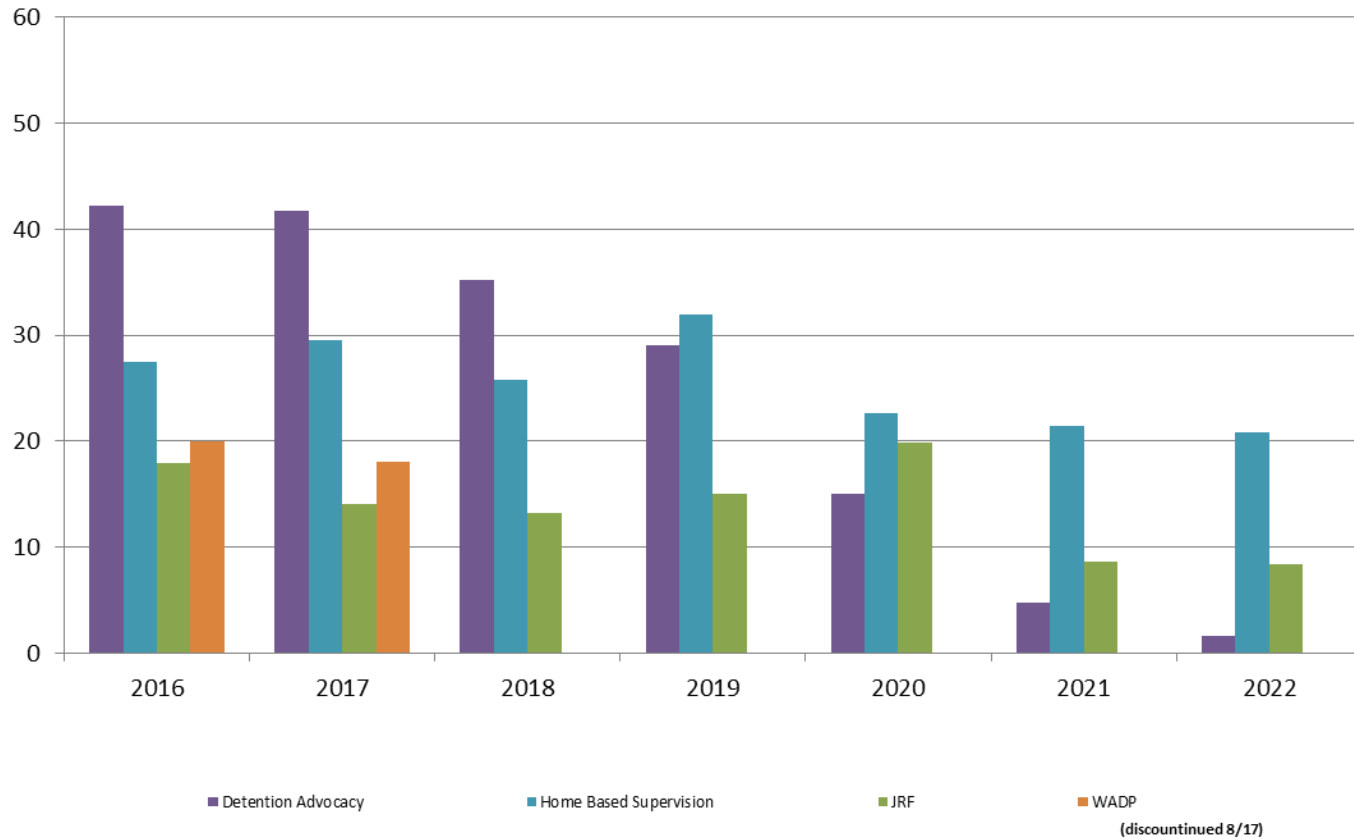
Reason for JDF Admits

Reason	January 2021	January 2022
New Charges	12	10
Case Management Placement Failures	0	0
Court Ordered Commitment	6	2
Failure to Appear	2	4
Other Program Failure	3	0
Other Warrant	0	0
Pre-Adjudication House Arrest	3	1
Pretrial Supervision	2	1
Probation Warrant	4	6
Sanction House	1	0



Juvenile Detention Alternatives

ADP: January 2016 - present



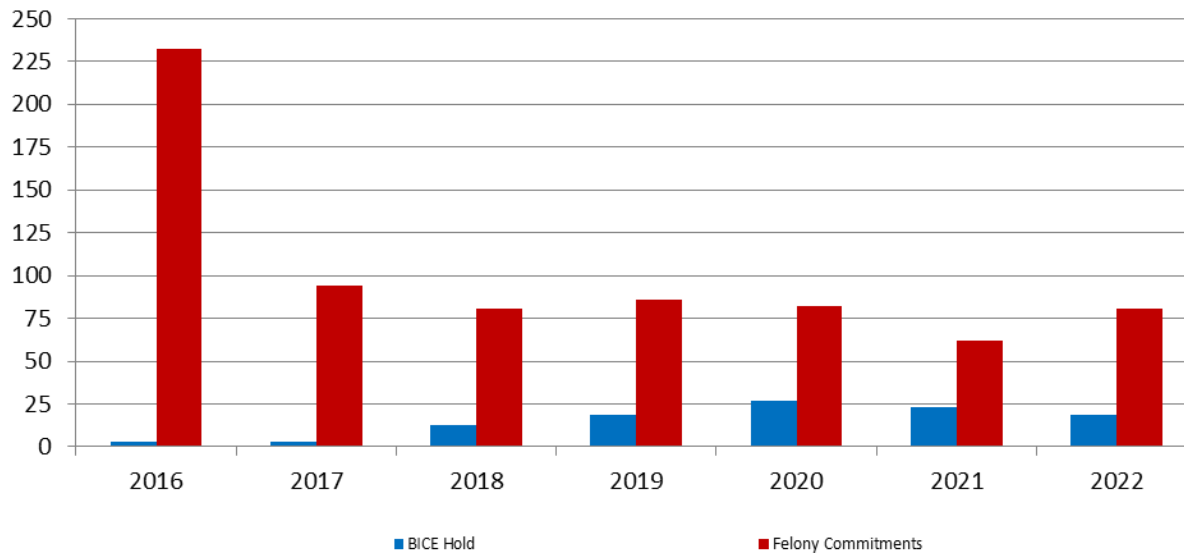
Juvenile Detention Services

January ADP	2019	2020	2021	2022
Juvenile Detention Facility	50	53	33	24
Juvenile Residential Facility	15	20	9	8
Home Based Supervision	32	23	21	21
Detention Advocacy Case Management Services	29	15	5	2
Weekend Alternative Detention Program (total)	0	N/A	N/A	N/A

January YTD AVERAGE	2019	2020	2021	2022
Juvenile Detention Facility	50	53	33	24
Juvenile Residential Facility	15	20	9	8
Home Based Supervision	32	23	21	21
Detention Advocacy Case Management Services	29	15	5	2
Weekend Alternative Detention Program	0	N/A	N/A	N/A

Monthly Jail Snapshot: November 2021

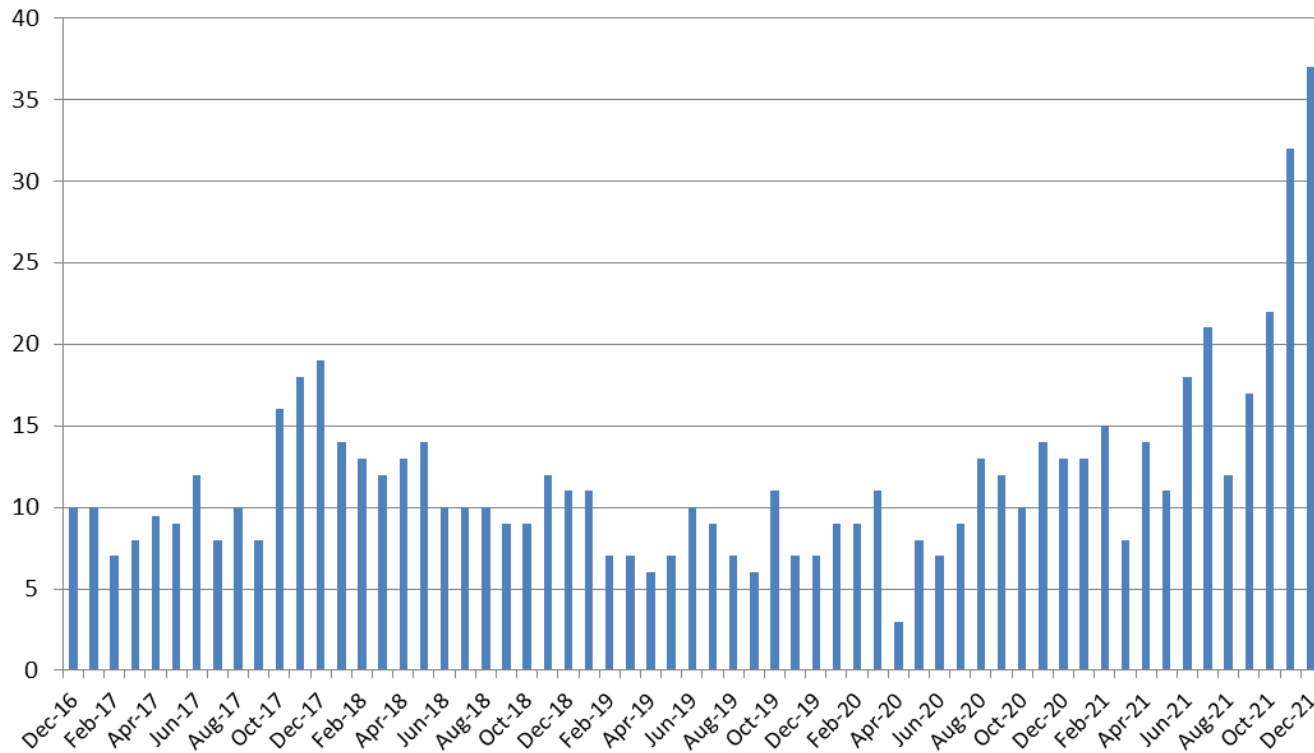
Snapshots January 2016 - present



BICE Hold	2016	2017	2018	2019	2020	2021	2022
January	3	3	13	19	27	23	19
Felony Commitments	2016	2017	2018	2019	2020	2021	2022
January	232	94	81	86	82	62	81



Journal Entry Completion (Average Days) December 2016 - present



December	2016	2017	2018	2019	2020	2021
Avg. Days	10	19	11	7	13	37
YTD Avg.	12	11	11	8	10	18

