

# Criminal Justice Coordinating Council

## Population Report & Program Trends

February 2022

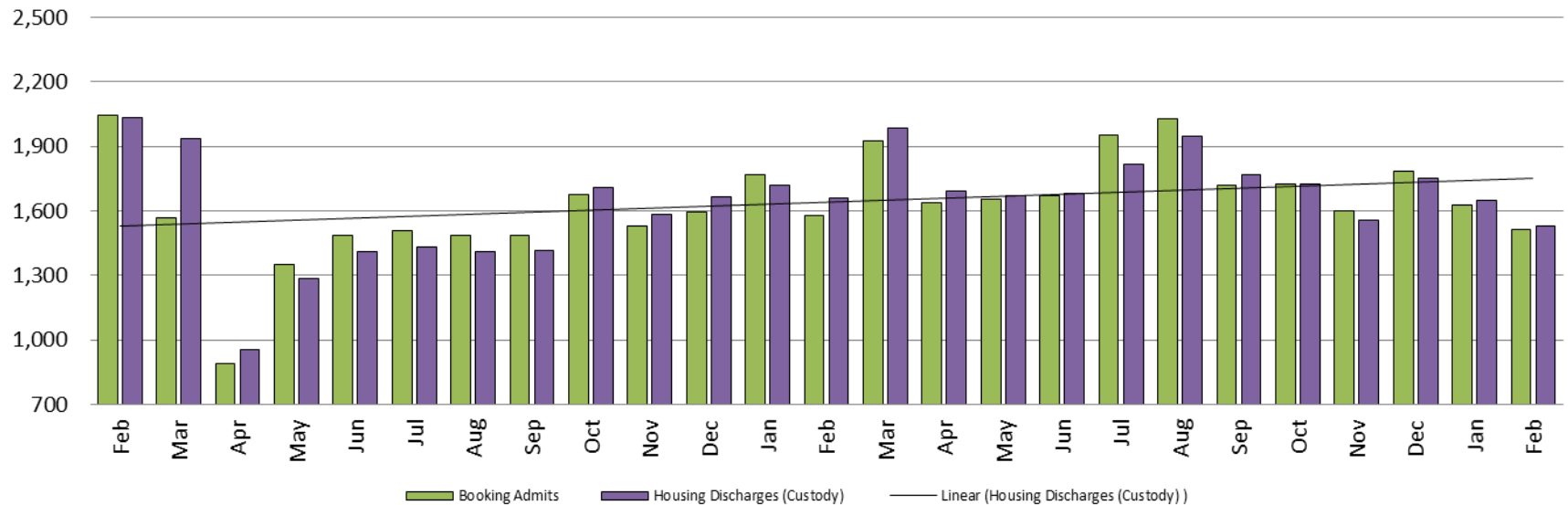


*Sedgwick County...*  
*working for you*

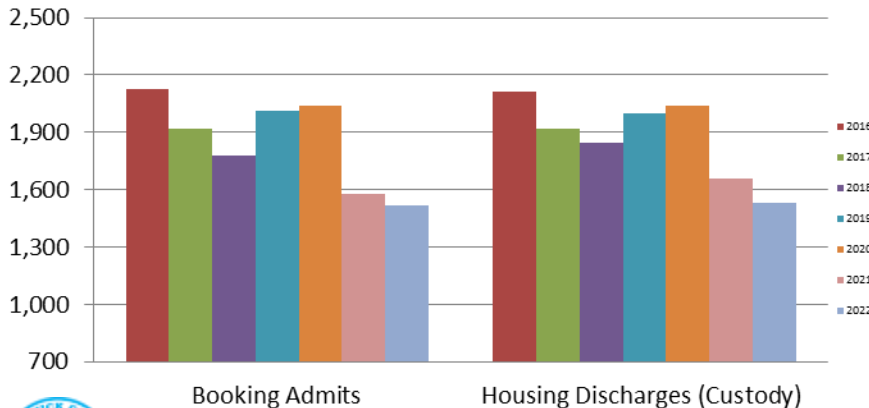
# Detention Facility

## Booking Admits & Housing Discharges from Custody

### February 2020 - present



### Bookings Year over Year: Month of February



#### Bookings February

2020: 2,042

2021: 1,580

2022: 1,515

#### Housing Discharges February

2020: 2,036

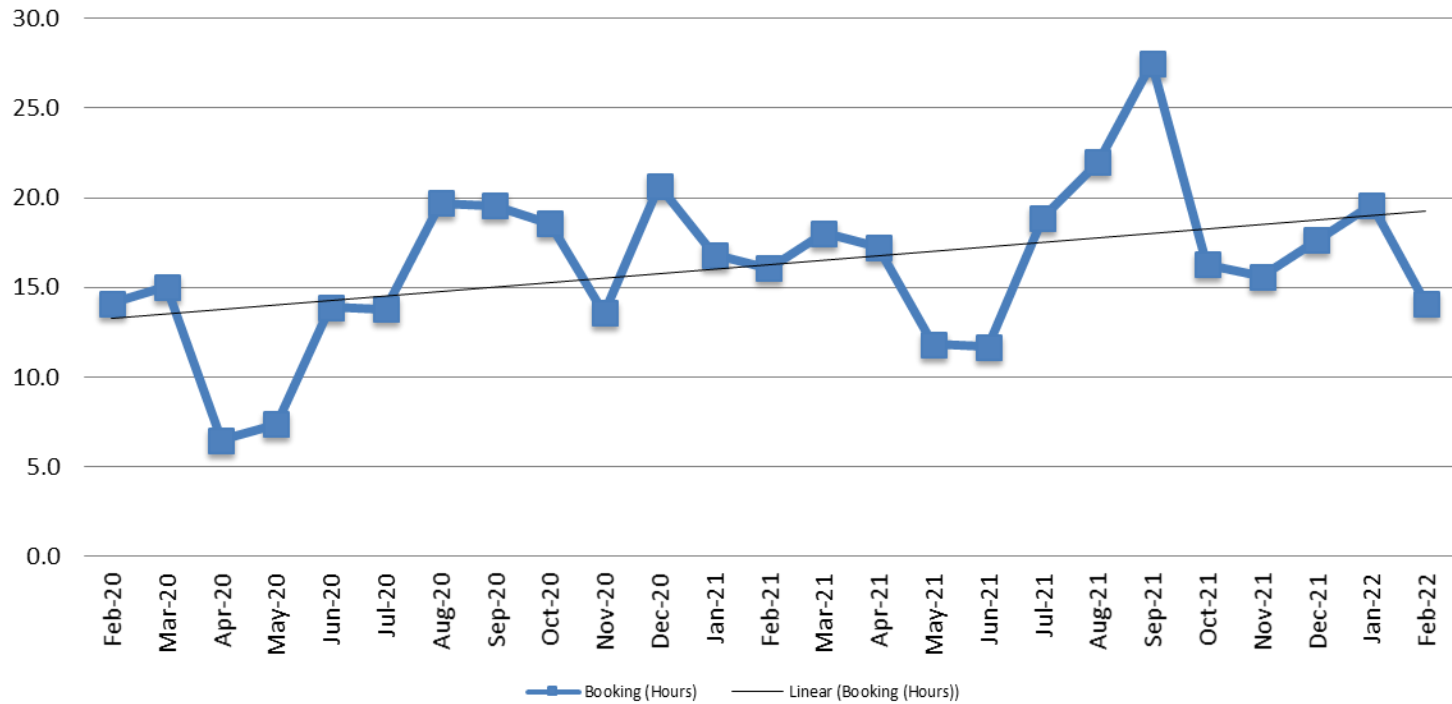
2021: 1,661

2022: 1,530



Sedgwick County...  
working for you

## Average Length of Stay: Booking (Hours) February 2020 - present

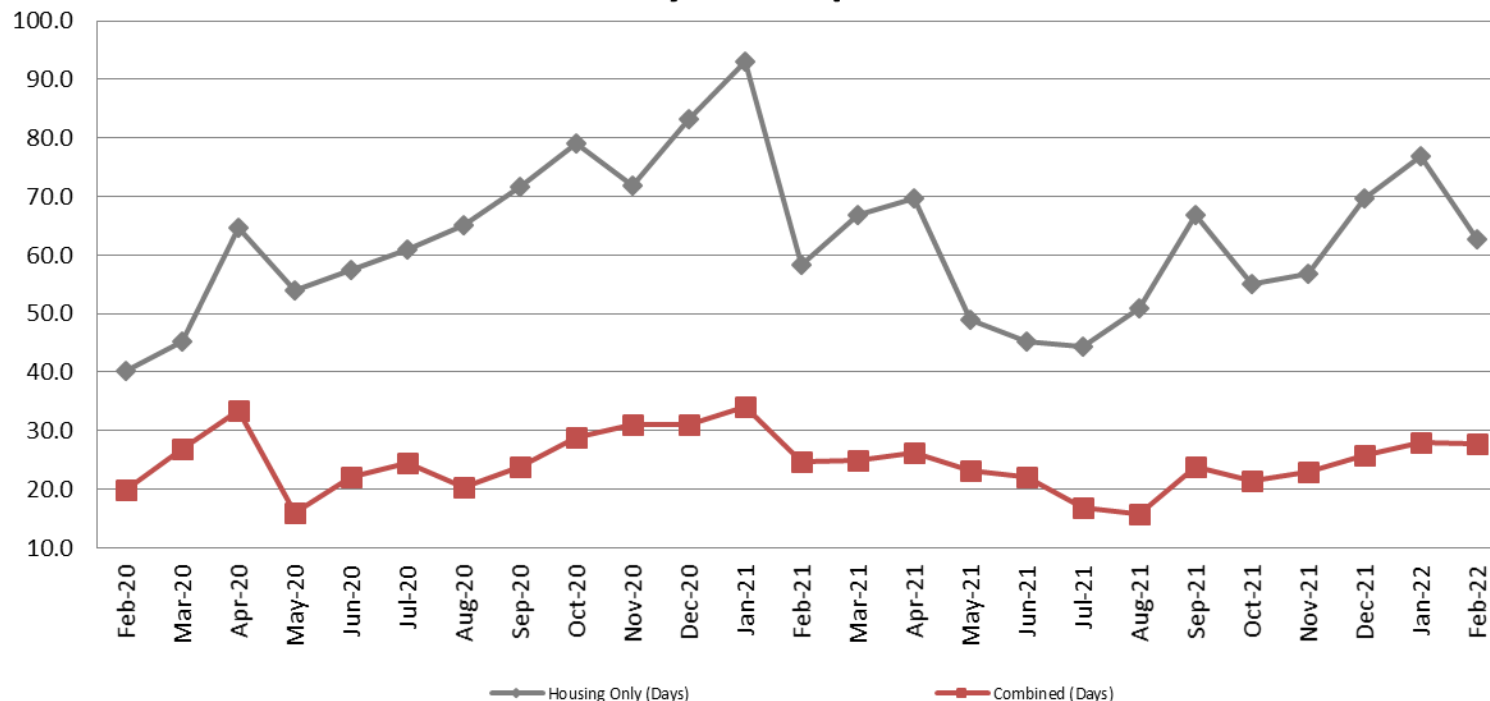


February	February YTD Average
2020: 14.1	2020: 17.9
2021: 16.1	2021: 16.5
2022: 14.1	2022: 16.9



# Average Length of Stay: Housing & Combined (Days)

February 2020 - present



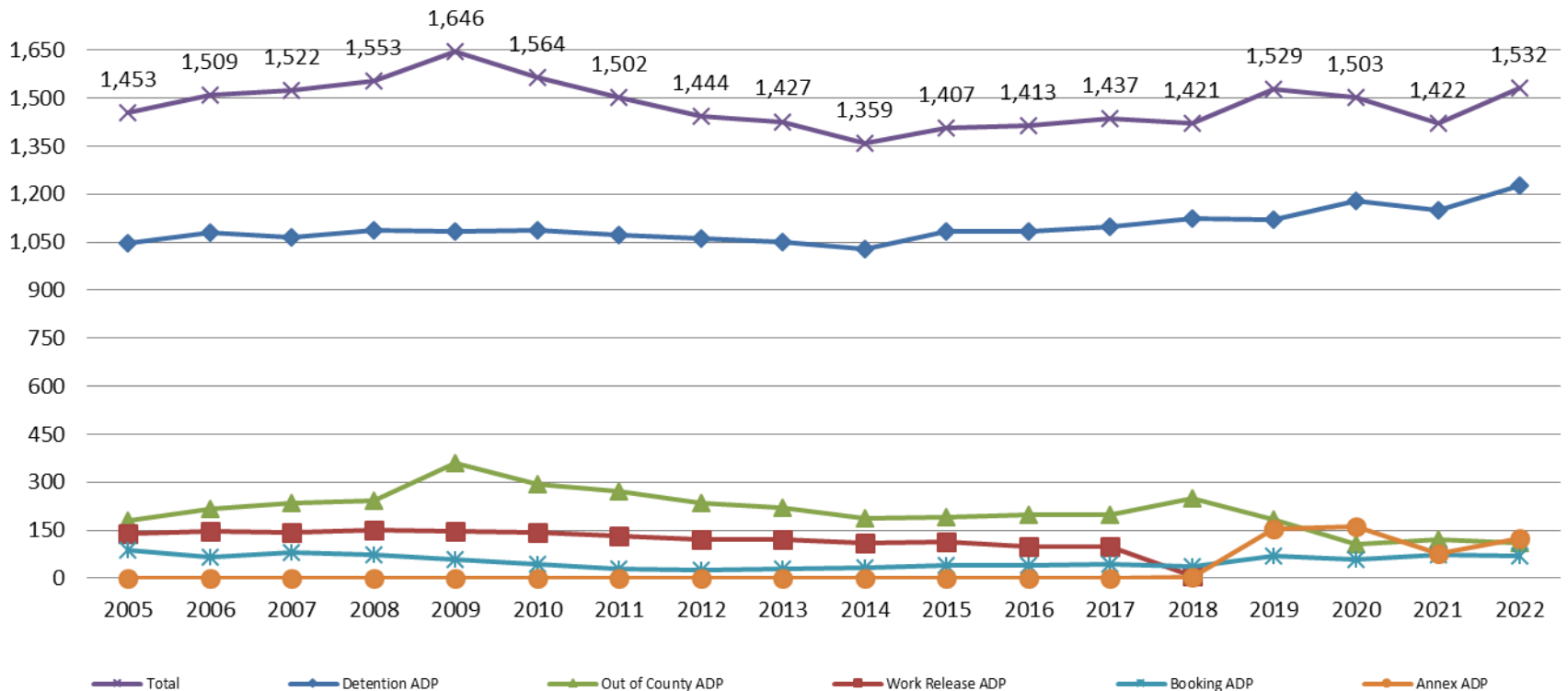
Month Year	Housing Only	Housing YTD AVG	Combined Days	Combined YTD AVG
February 2020	40.2	45.5	20.0	20.9
February 2021	58.4	75.7	24.7	29.4
February 2022	62.8	69.8	27.7	27.8



Sedgwick County...  
working for you

# Jail: Annual Average Daily Population (ADP)

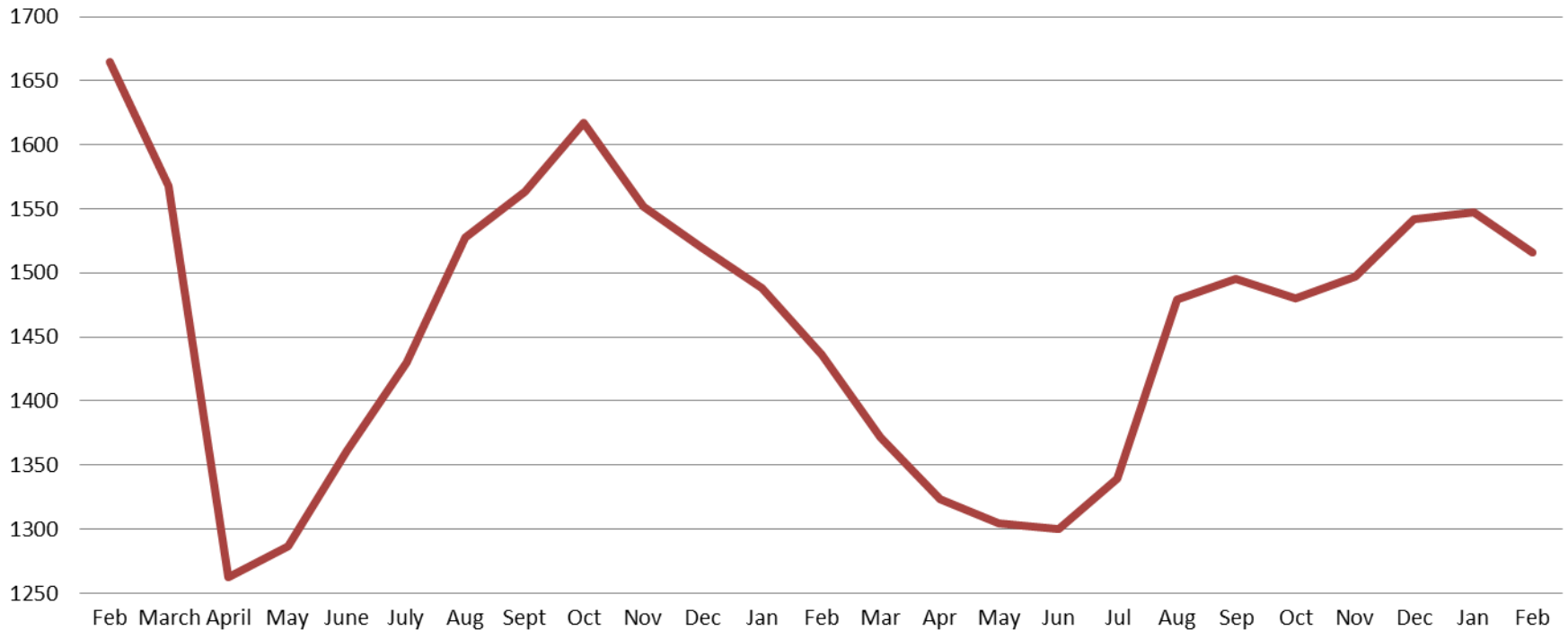
## TRENDS: Booking, Detention, Work Release, & Out of County Annual ADP: 2005 - present



Sedgwick County...  
working for you

\*Beginning January 2018, Work Release program began transfer to Division of Correction  
(data obtained from detention facility)

# TOTAL MONTHLY ADP: JAIL (Booking, Detention Facility, Annex, & Out of County) February 2020 - present



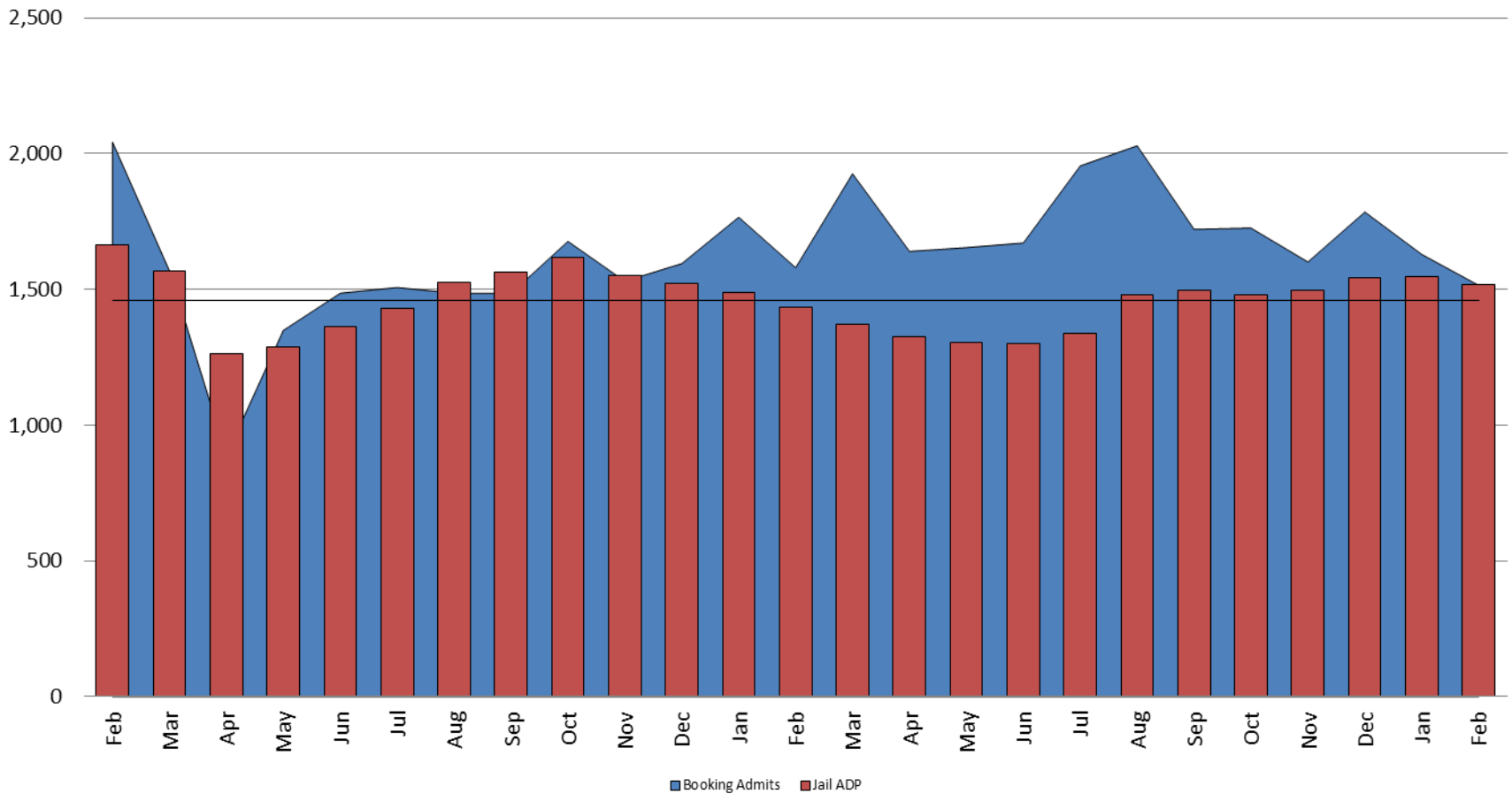
February 2020	February 2021	February 2022
1,664	1,436	1,516



Sedgwick County...  
working for you

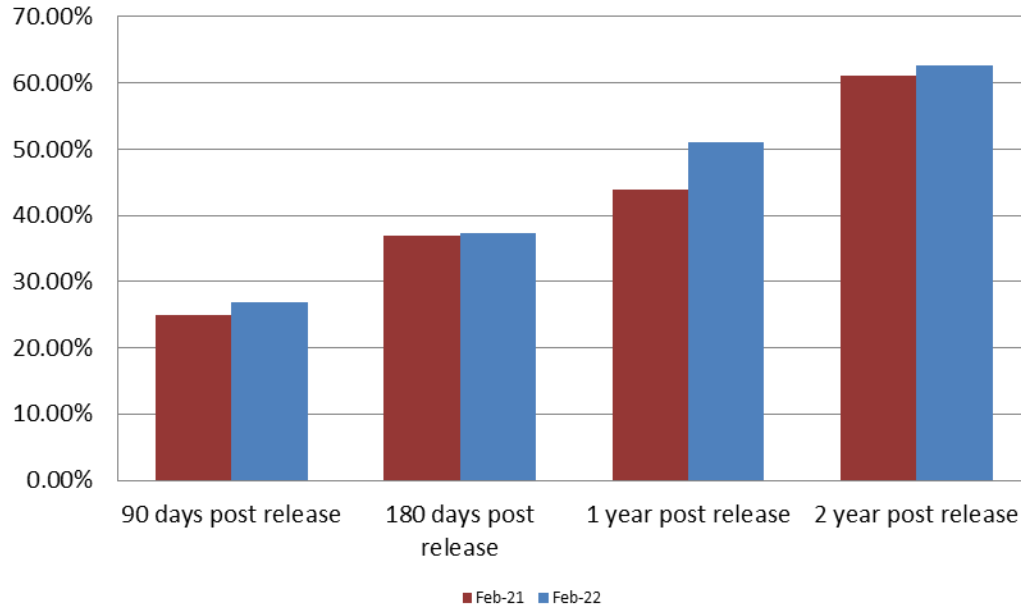
\*Beginning January 2018, Work Release program began transfer to Division of Corrections  
This slide shows total monthly ADP for individuals in booking, detention, work release, jail annex, and out-of county (combined)  
(data obtained from detention facility)

## Booking Admits & Total Monthly ADP (Jail): February 2020 - present



Jail includes individuals in booking, detention, work release and out-of county (combined)  
(data obtained from detention facility)

## Percent of Released Inmates Rearrested February

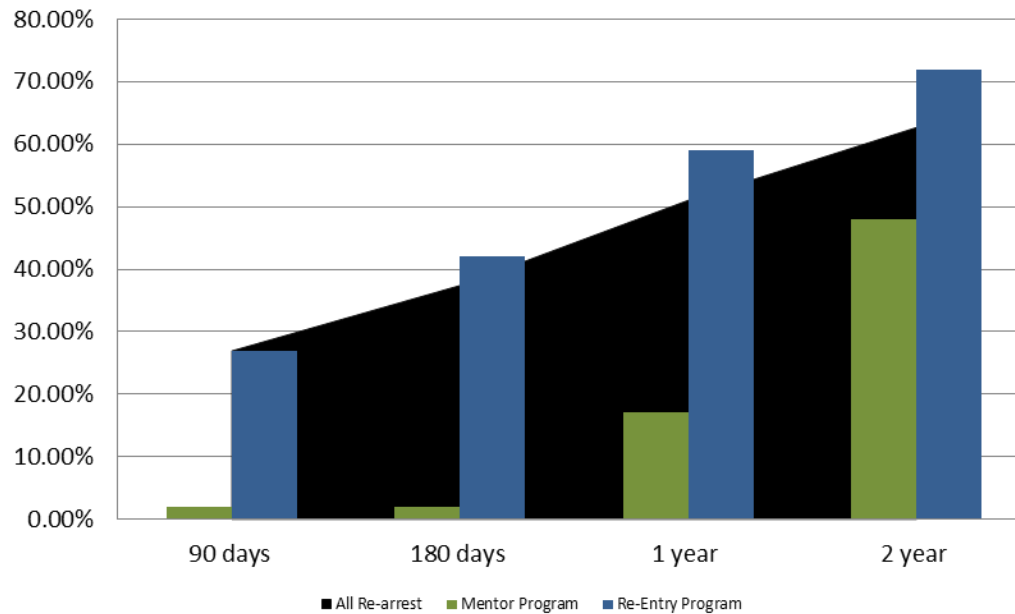


Month Year	90 Days	180 Days	1 Year	2 Years
February 2021	24.91%	36.95%	43.97%	61.15%
February 2022	26.94%	37.40%	51.03%	62.67%





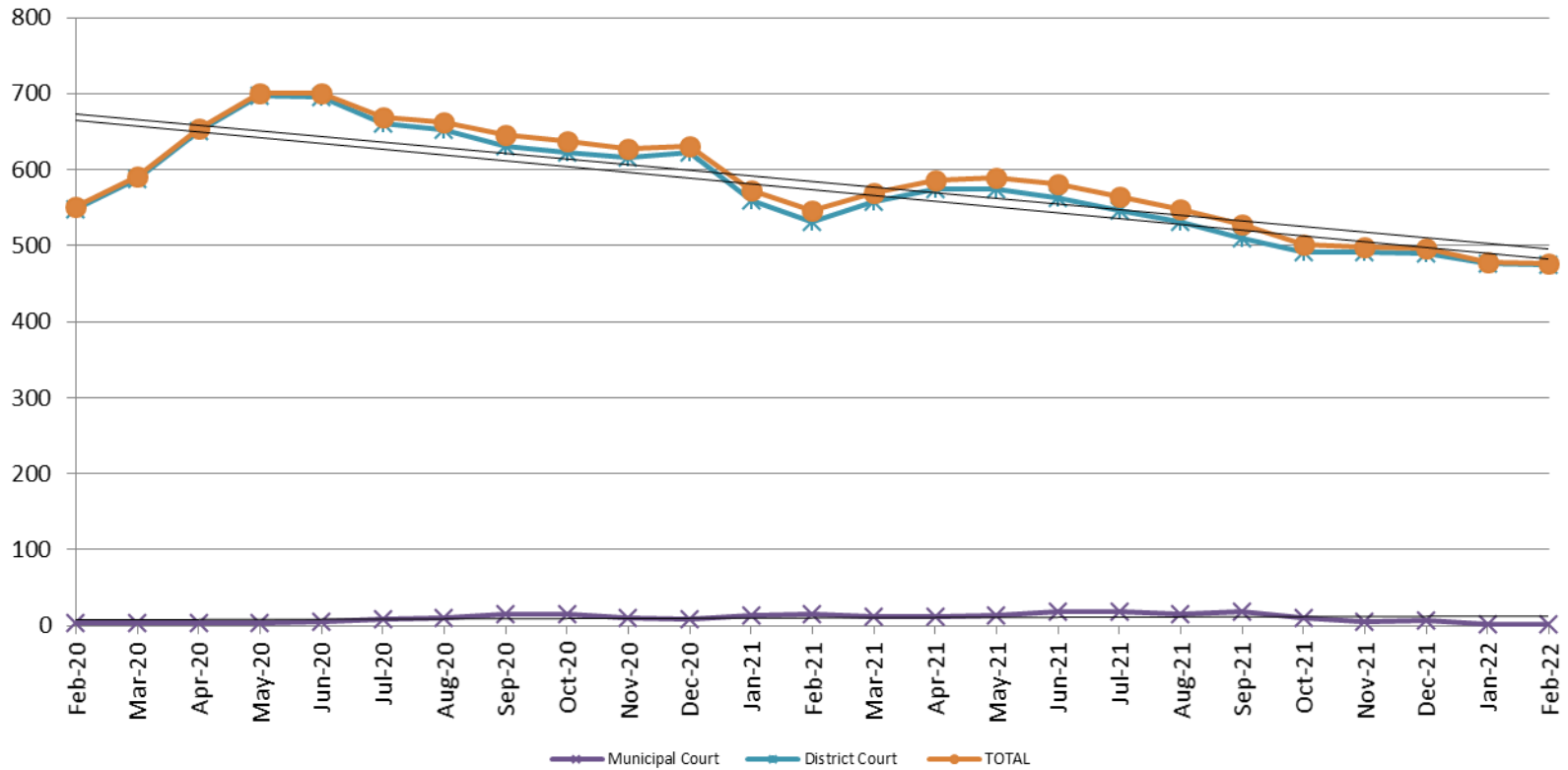
## Recidivism by Programs February 2022



February 2022	90 Days	180 Days	1 year	2 years
All Re-arrests	26.94%	37.40%	51.03%	62.67%
Mentor Program	2%	2%	17%	48%
Re-Entry Program	27%	42%	59%	72%



## Pretrial Services Program (PSP) Monthly ADP: February 2020 - present

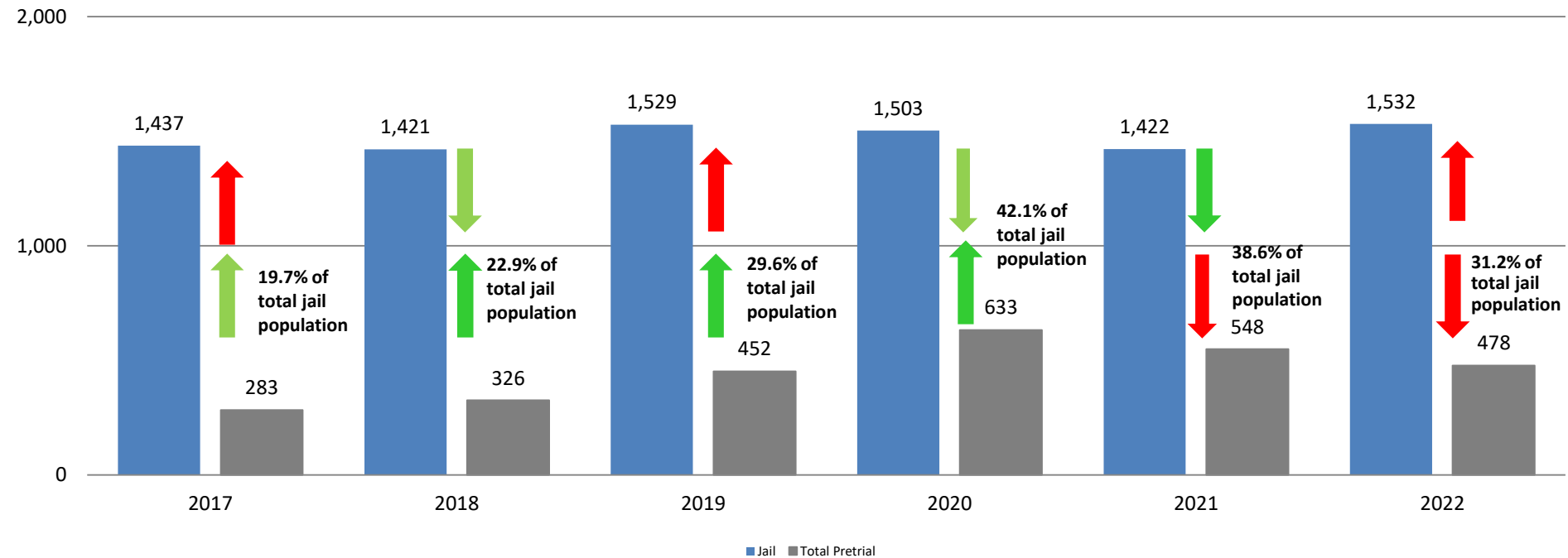


February	2020 ADP	2021 ADP	2022 ADP	2020 YTD Avg.	2021 YTD Avg.	2022 YTD Avg.
Muni. Court	4	15	2	4	14	2
Dist. Court	547	531	475	533	545.5	475.5
Total	551	546	477	537	559.5	477.5



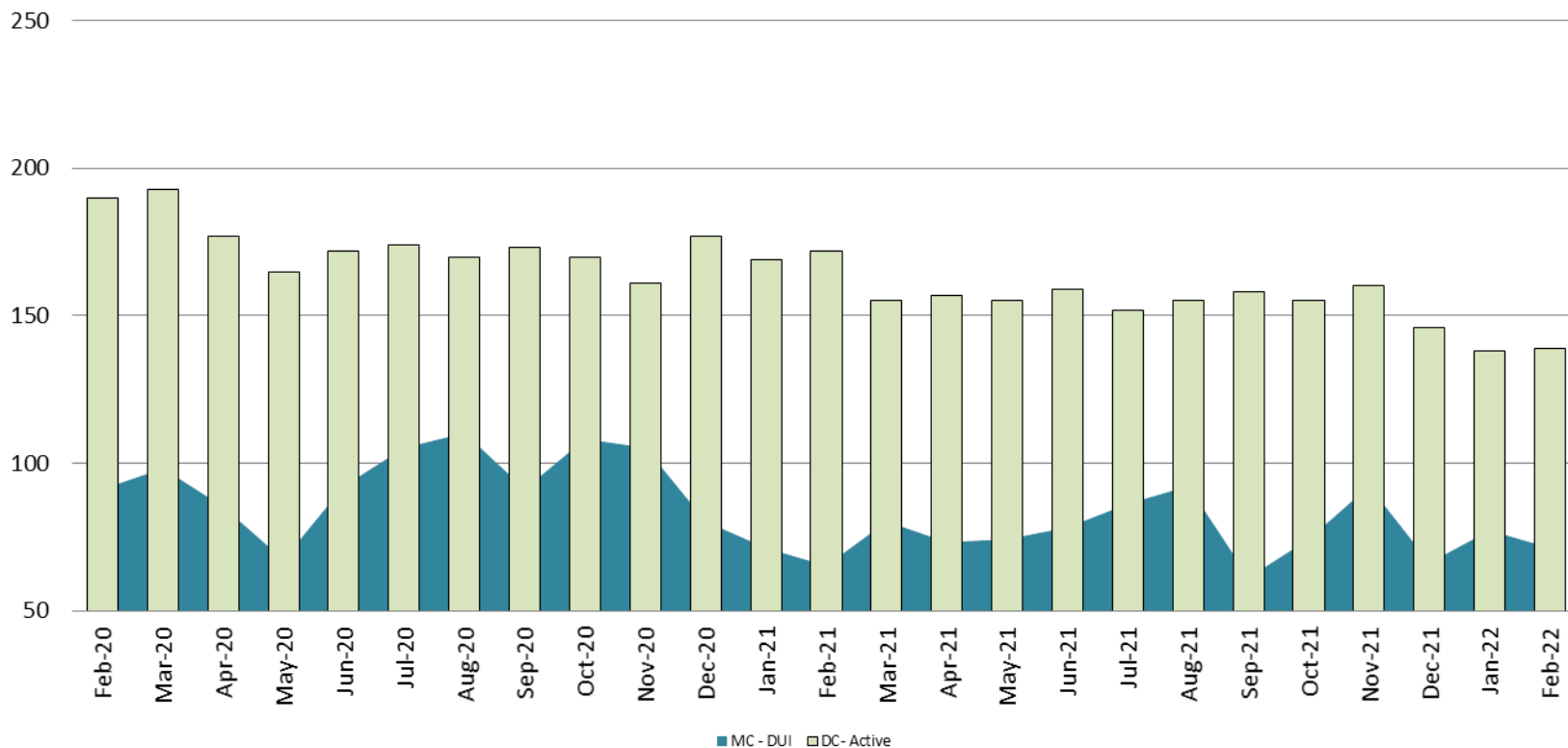
# Correlation: Total & PSP

## Total Annual ADP: 2017 - present



## Diversion - Active Caseload

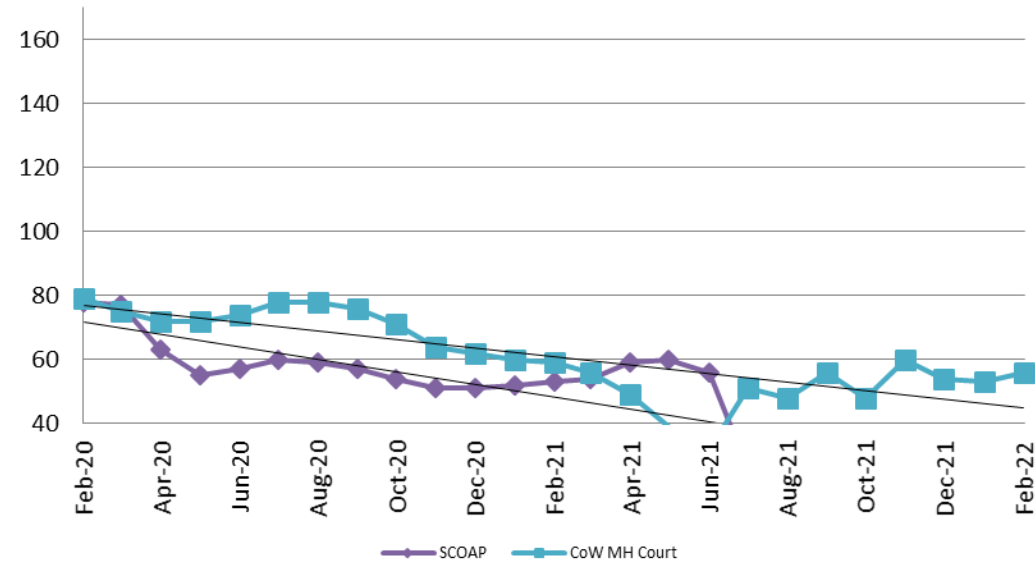
February 2020 - present



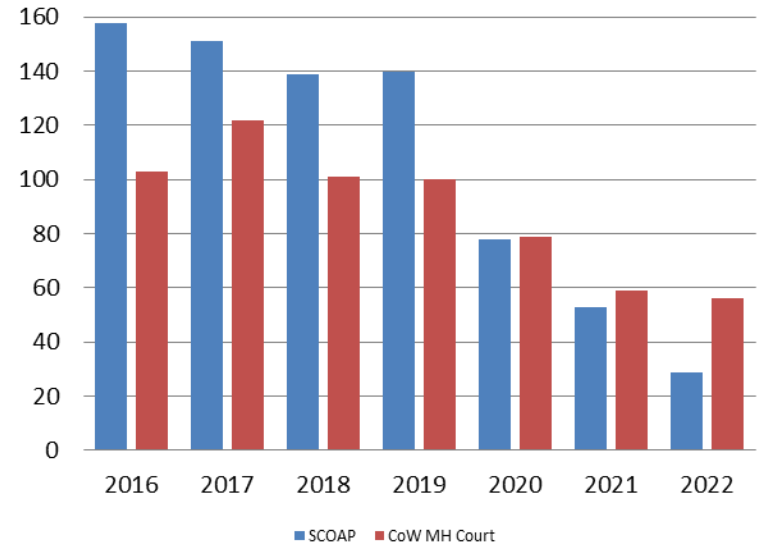
February	2020	2021	2022	2020 YTD Avg.	2021 YTD Avg.	2022 YTD Avg.
Muni. Court- DUI	91	65	71	97	68	74
Dist. Court- Active	190	172	139	191	171	139



## Mental Health - ADP February 2020 - present

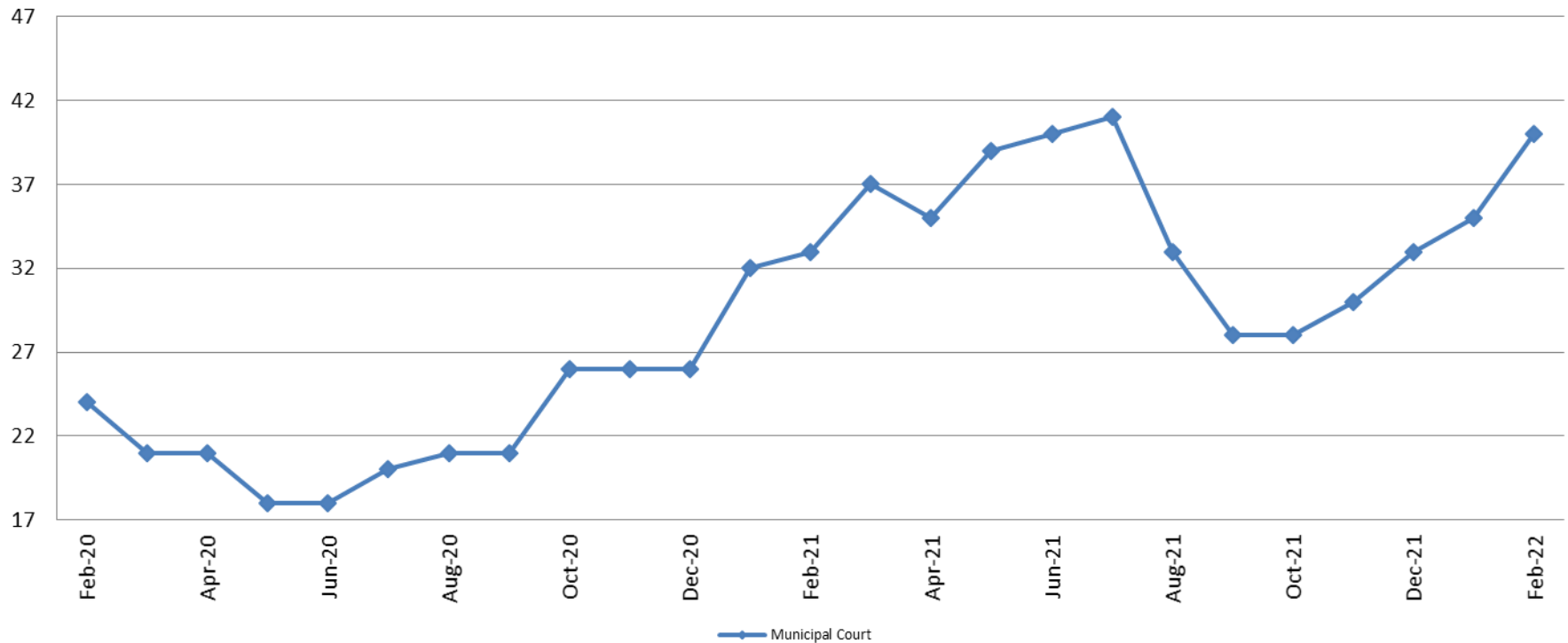


## Mental Health ADP Year over Year - February



February	2020 ADP	2021 ADP	2022 ADP	2020 YTD Avg.	2021 YTD Avg.	2022 YTD Avg.
SCOAP	78	53	29	79	53	29
MH Court	79	59	56	81	60	55

## Day Reporting - Active Caseload February 2020 - present



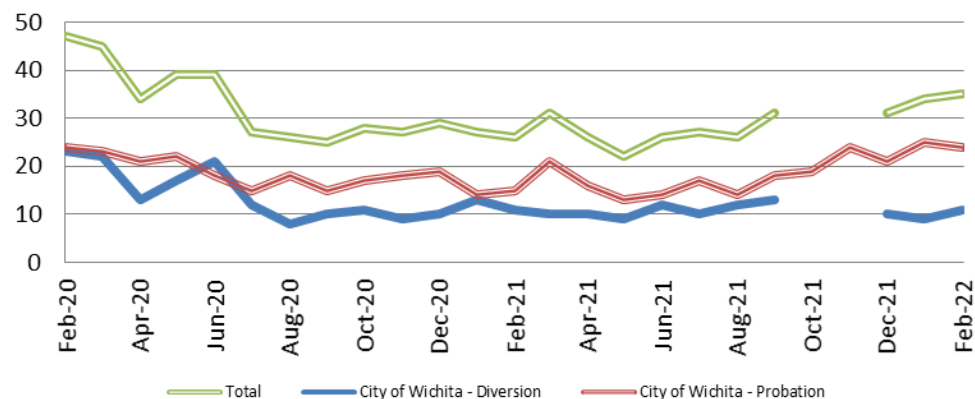
February	2017	2018	2019	2020	2021	2022
Muni. Court	35	38	34	24	33	40
Muni. Court YTD Avg.	35	39	31	25	33	38



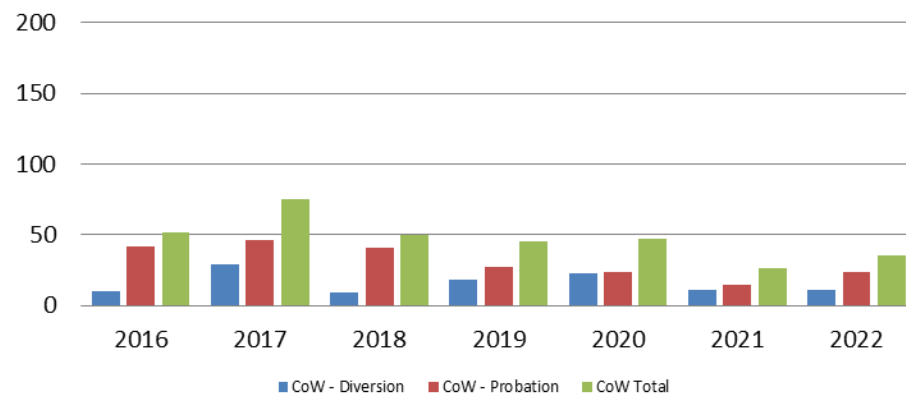
*Sedgwick County...*  
*working for you*

\*District Court funding ended on 6/30/2016  
(data obtained from DRC)

## Drug Court - City of Wichita ADP: February 2020 - present



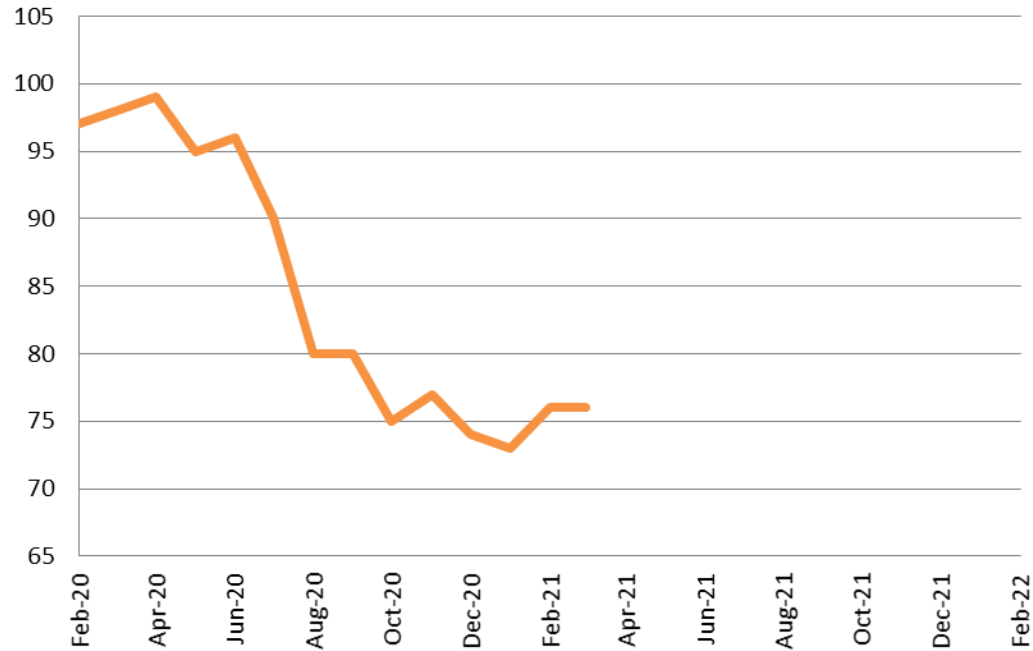
## Drug Court- City of Wichita Year over Year - February



February	2020	2021	2022
Diversion	23	11	11
Probation	24	15	24
Total	47	26	35



## Drug Court - Sedgwick County ADP: February 2020 - present

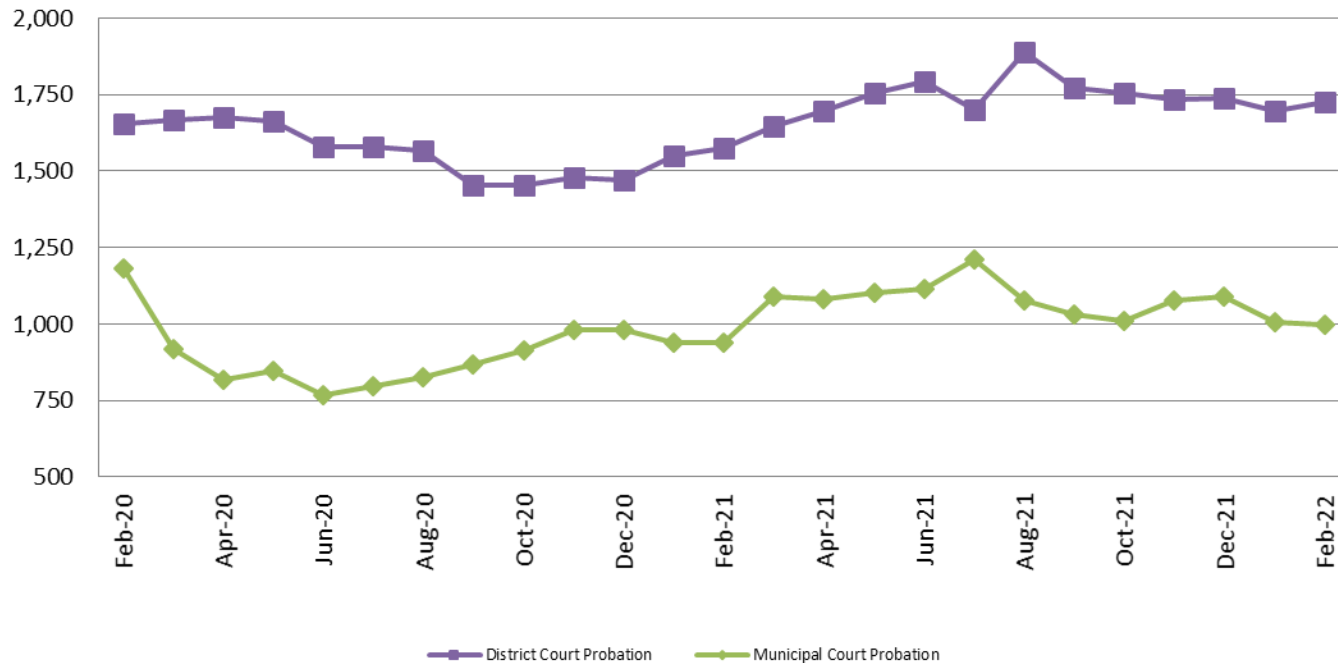


February	2020	2021	2022
Sedg. Co. ADP	97	76	N/A
YTD Avg.	96	75	N/A





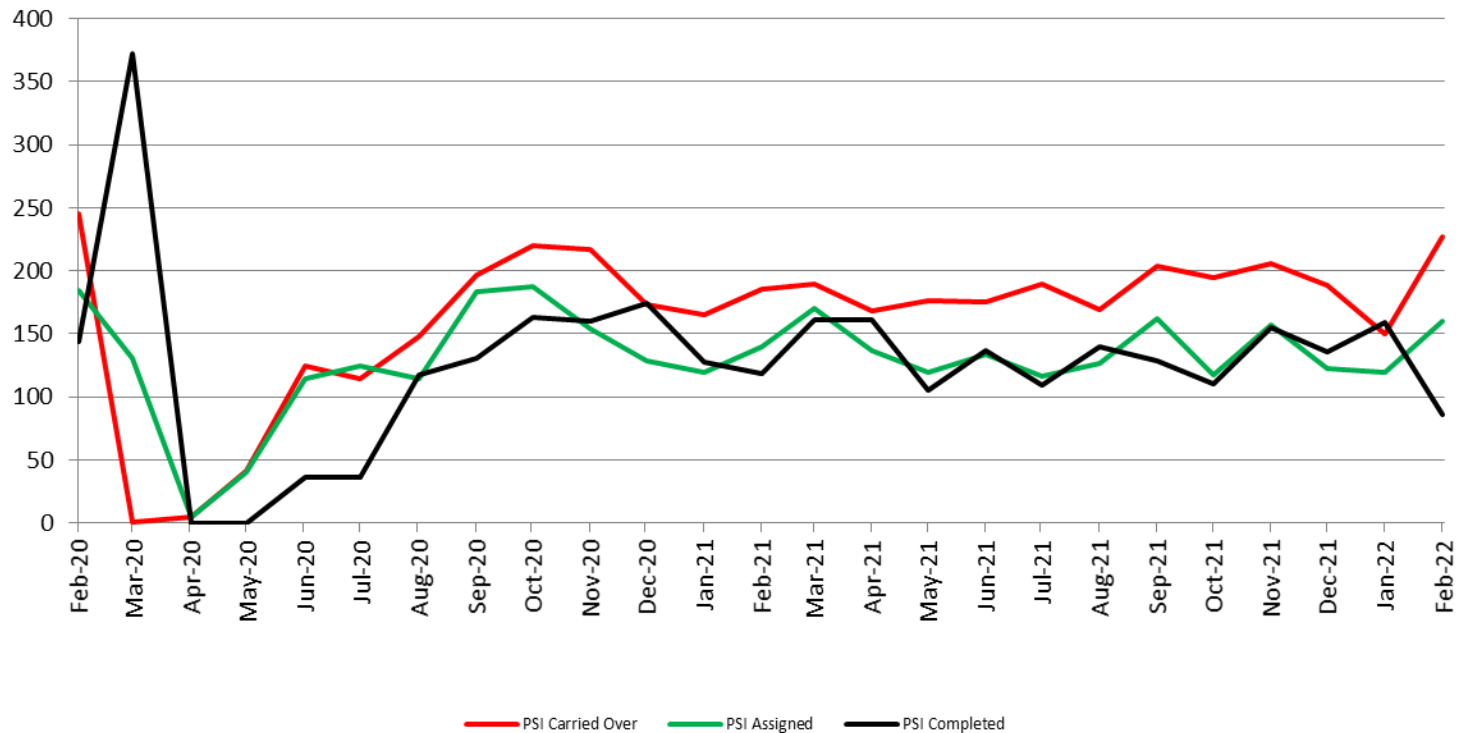
## Probation - Active Caseloads February 2020 - present



February	2020	2021	2022	2020 YTD Avg.	2021 YTD Avg.	2022 YTD Avg.
Dist. Court Probation	1,656	1,574	1,724	1,648	1,563	1,710
Muni. Court Probation	1,180	941	999	1,207	941	1,003



## District Court Probation: Pre-Sentence Investigation February 2020 - present

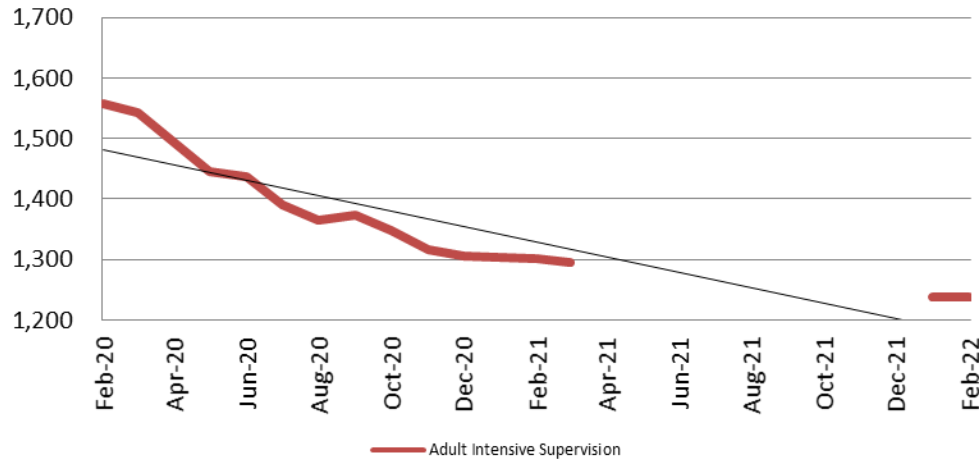


February	2020	2021	2022
Carried Over	245	186	227
Assigned	184	140	160
Completed	144	119	86



# Community Corrections

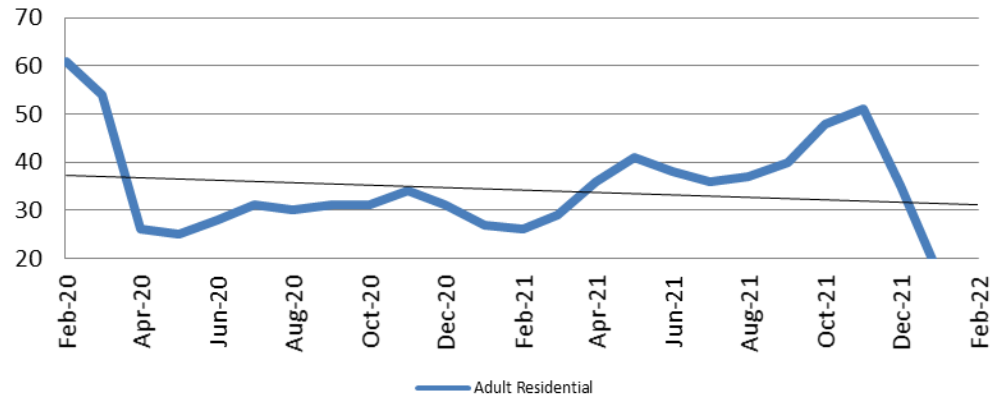
**Adult Intensive Supervision Probation (AISP):  
ADP February 2020 - present**



Year	February	February YTD Avg.
2020	1,557	1,560
2021	1,302	1,303
2022	1,239	1,239

**Adult Residential: ADP  
February 2020 - present**

Year	February	February YTD Avg.
2020	61	58
2021	26	27
2022	12	14



# Community Corrections

## Work Release: ADP February 2021 - present

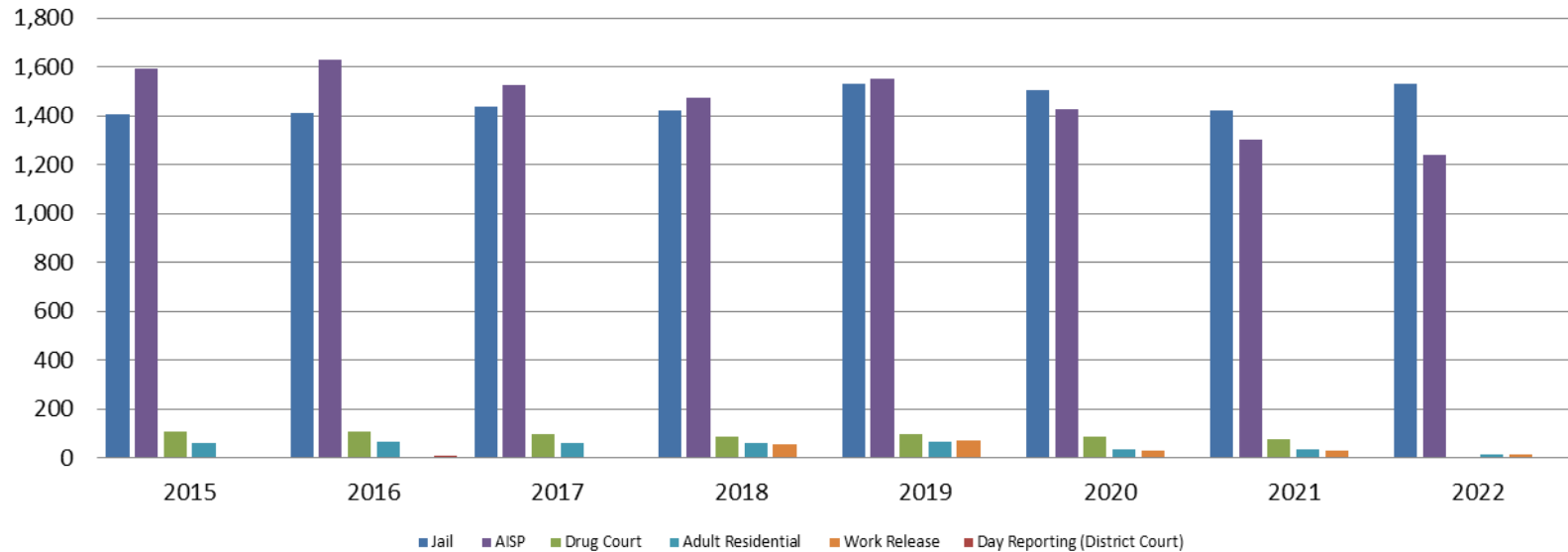


Month Year	Total	YTD Avg.
February 2021	25	23
February 2022	10	12



# Correlation: Total & Sedgwick County Programs (Adult)

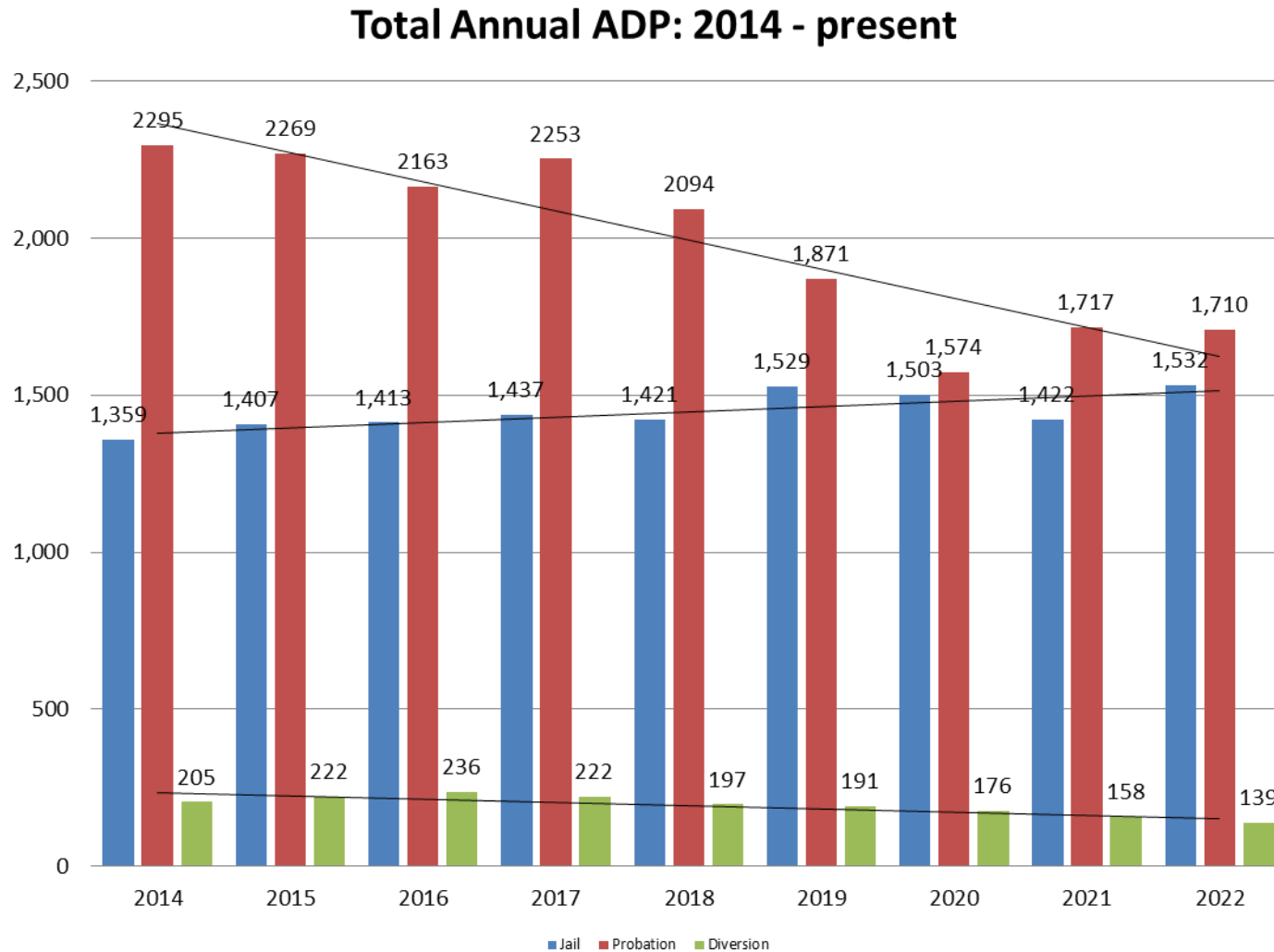
**Total Annual ADP 2015 - present**



	2020	2021	2022
Jail	1,503	1,422	1,532
AISP	1,428	1,300	1,239
Drug Court	88	75	0
Adult Residential	36	37	14
Work Release	30	30	12
Day Reporting (DC)	0	0	0

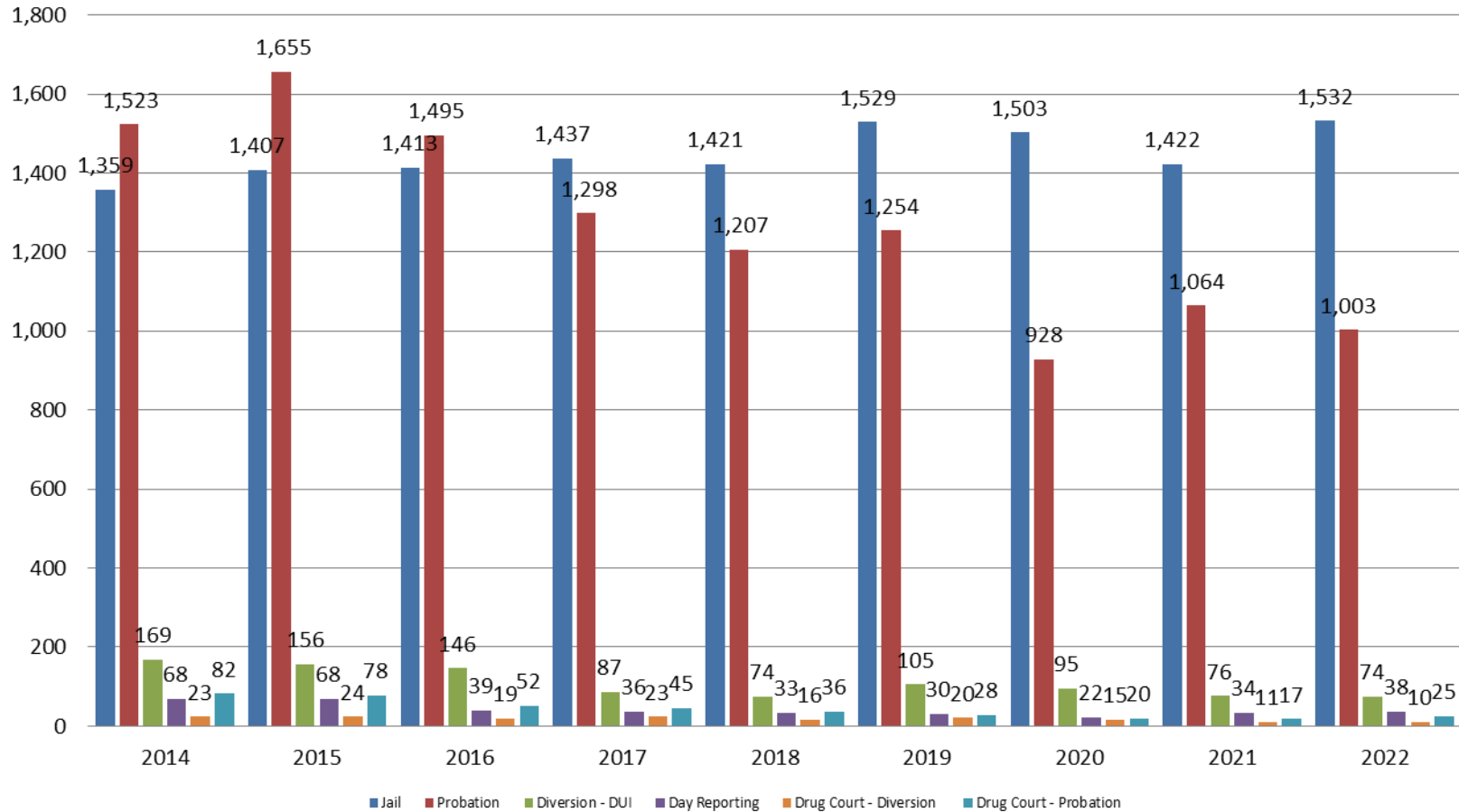


# Correlation: Total & District Court Programs



# Correlation: Total & City of Wichita / Municipal Court Programs

**Total Annual ADP: 2014 - present**

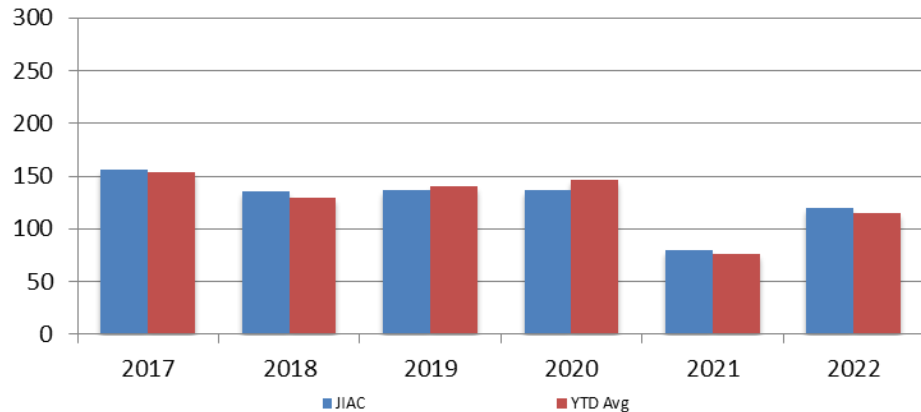


*Sedgwick County...*  
*working for you*

Jail includes individuals in booking, detention, work release and out-of county (combined)  
(data obtained from detention facility, CoW, & Pretrial Services)

# Juvenile

**JIAC Intakes**  
**February 2017 - present**

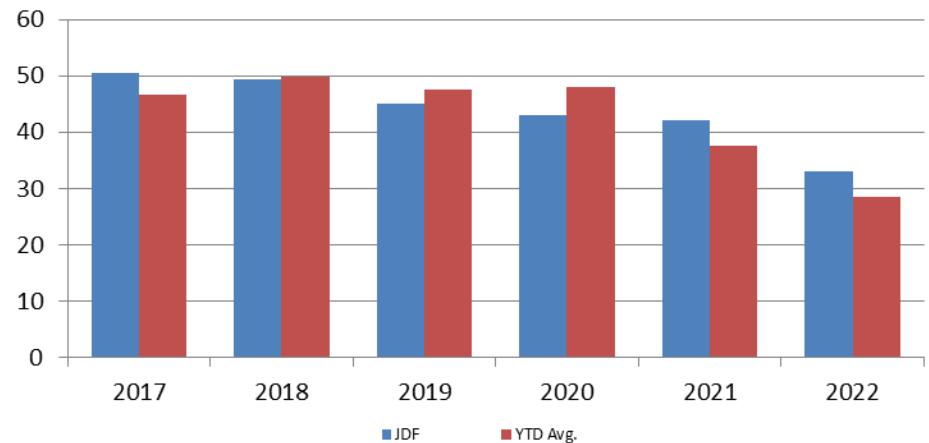


Year	February	February YTD Avg.
2017	156	154
2018	136	130
2019	137	141
2020	137	147
2021	80	76
2022	120	115

**Year**      **February**      **February YTD Avg.**

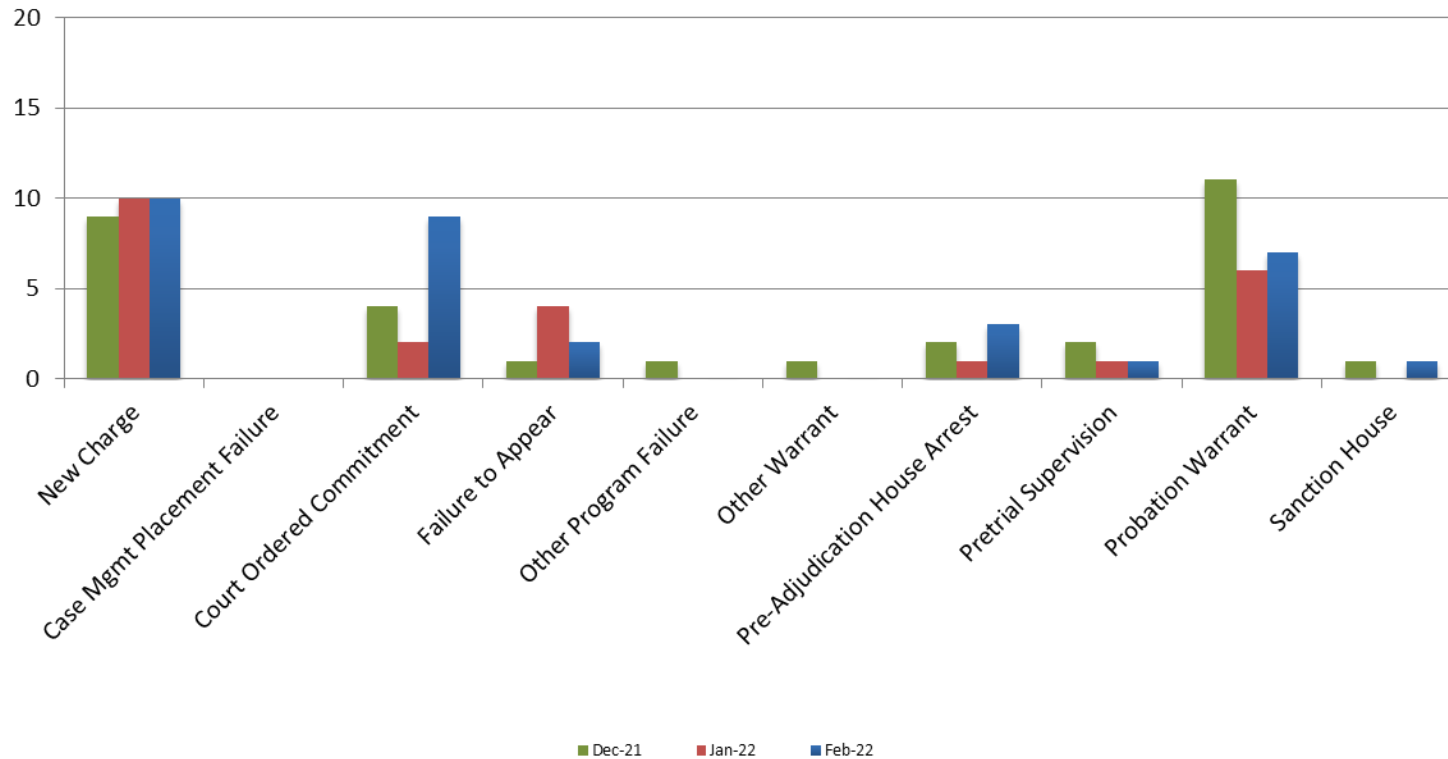
2017	50	47
2018	49	50
2019	45	48
2020	43	48
2021	42	38
2022	33	29

**JDF ADP**  
**February 2017 - present**





# Reason for JDF Admits



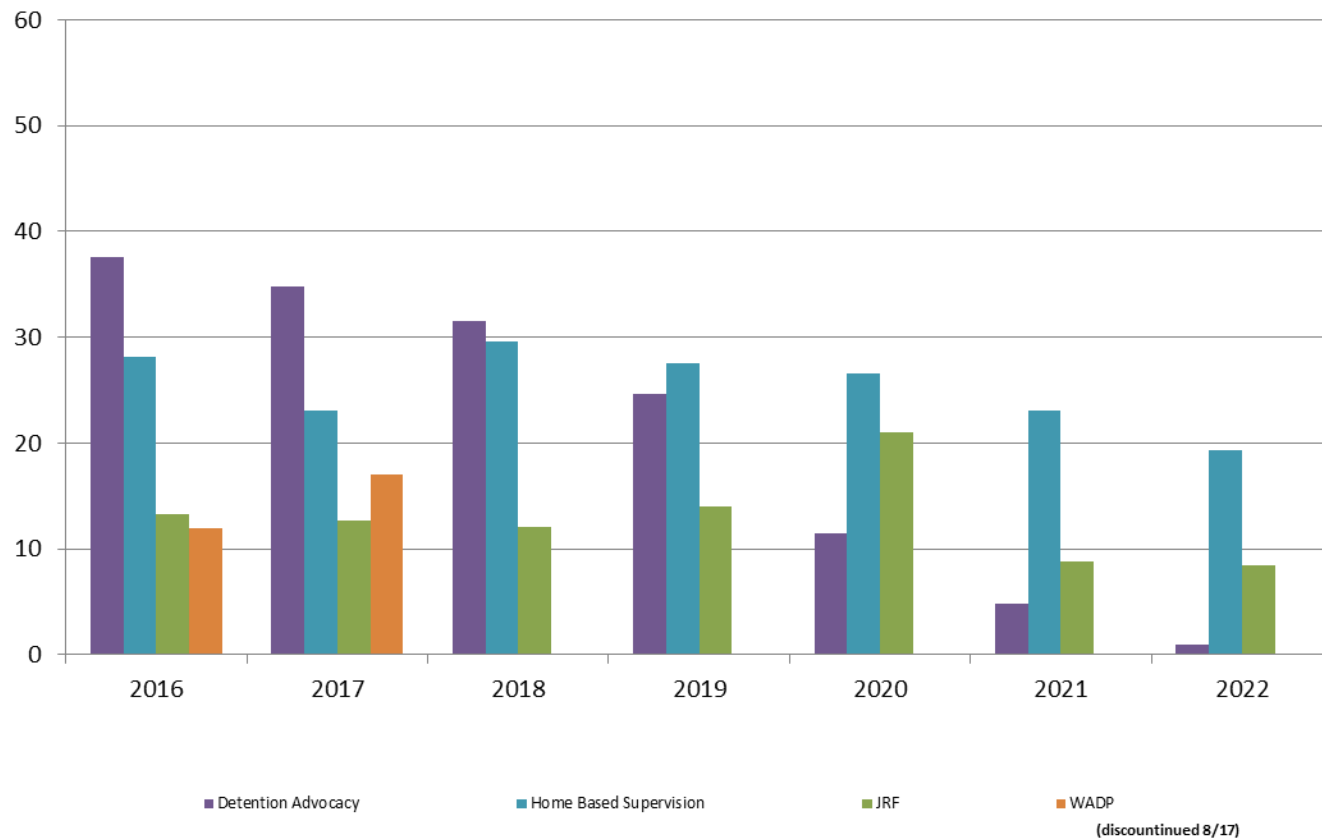
## Reason for JDF Admits

Reason	February 2021	February 2022
New Charges	15	10
Case Management Placement Failures	0	0
Court Ordered Commitment	7	9
Failure to Appear	7	2
Other Program Failure	6	0
Other Warrant	0	0
Pre-Adjudication House Arrest	1	3
Pretrial Supervision	0	1
Probation Warrant	5	7
Sanction House	1	1



# Juvenile Detention Alternatives

**ADP: February 2016 - present**



*Sedgwick County...*  
*working for you*

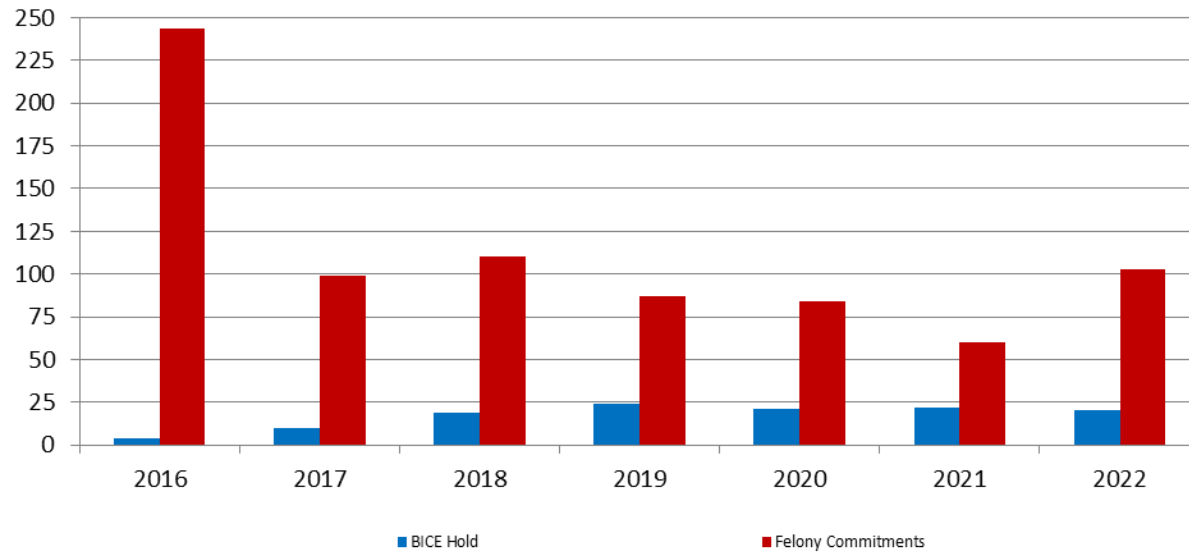
# Juvenile Detention Services

<b>February ADP</b>	<b>2019</b>	<b>2020</b>	<b>2021</b>	<b>2022</b>
Juvenile Detention Facility	45	43	42	33
Juvenile Residential Facility	14	21	9	8
Home Based Supervision	28	27	23	19
Detention Advocacy Case Management Services	25	12	5	1
Weekend Alternative Detention Program (total)	N/A	N/A	N/A	N/A

<b>February YTD AVERAGE</b>	<b>2019</b>	<b>2020</b>	<b>2021</b>	<b>2022</b>
Juvenile Detention Facility	48	48	38	29
Juvenile Residential Facility	15	20	9	8
Home Based Supervision	30	25	22	20
Detention Advocacy Case Management Services	27	13	5	1
Weekend Alternative Detention Program	N/A	N/A	N/A	N/A

# Monthly Jail Snapshot: February

Snapshots February 2016 - present



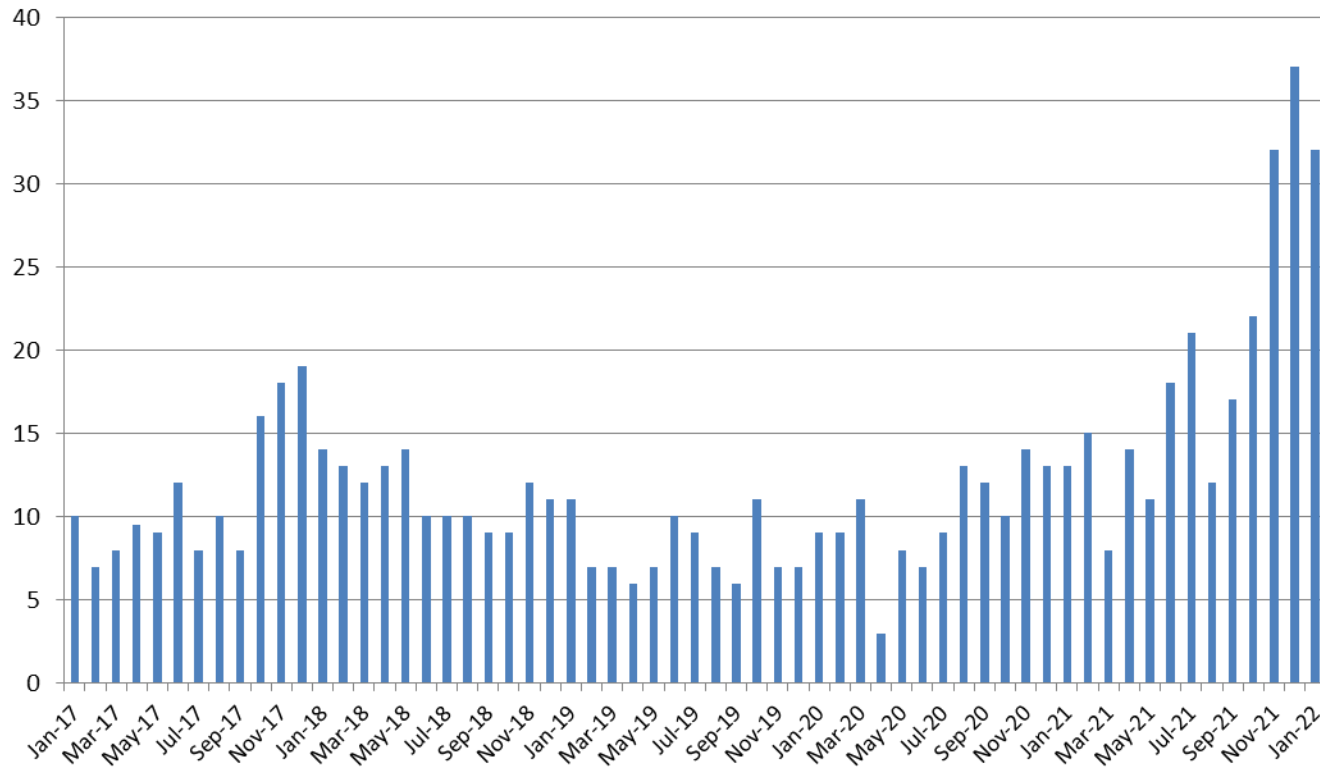
BICE Hold	2016	2017	2018	2019	2020	2021	2022
February	4	10	19	24	21	22	20

Felony Commitments	2016	2017	2018	2019	2020	2021	2022
February	244	99	110	87	84	60	103



## Journal Entry Completion (Average Days) January 2016 - present



January	2017	2018	2019	2020	2021	2022
Avg. Days	10	14	11	9	13	32
YTD Avg.	10	14	11	9	13	32

