

# Criminal Justice Coordinating Council

## Population Report & Program Trends

April 2022

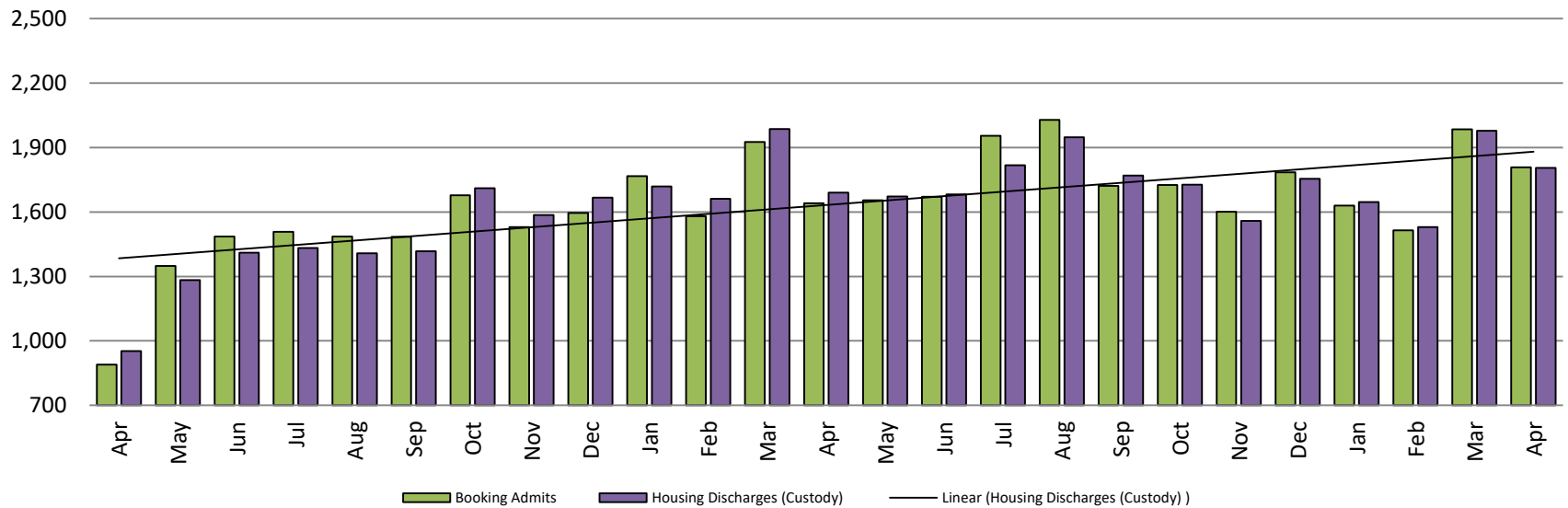


*Sedgwick County...*  
*working for you*

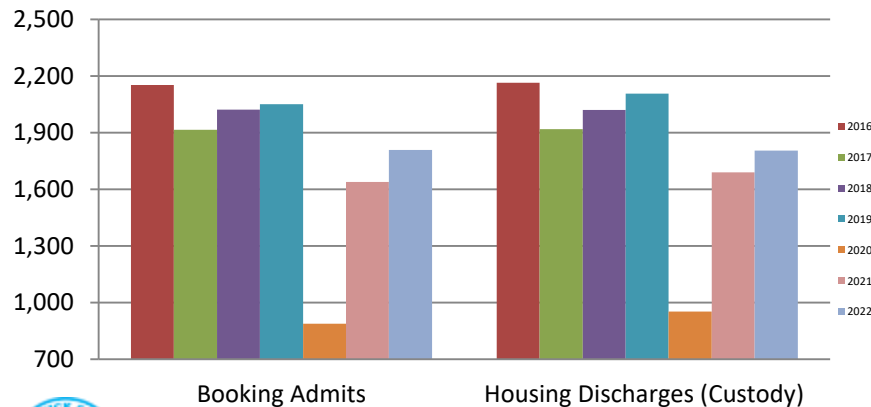
# Detention Facility

## Booking Admits & Housing Discharges from Custody

### April 2020 - present



### Bookings Year over Year: Month of April



#### Bookings April

2020: 889

2021: 1,640

2022: 1,808

#### Housing Discharges April

2020: 953

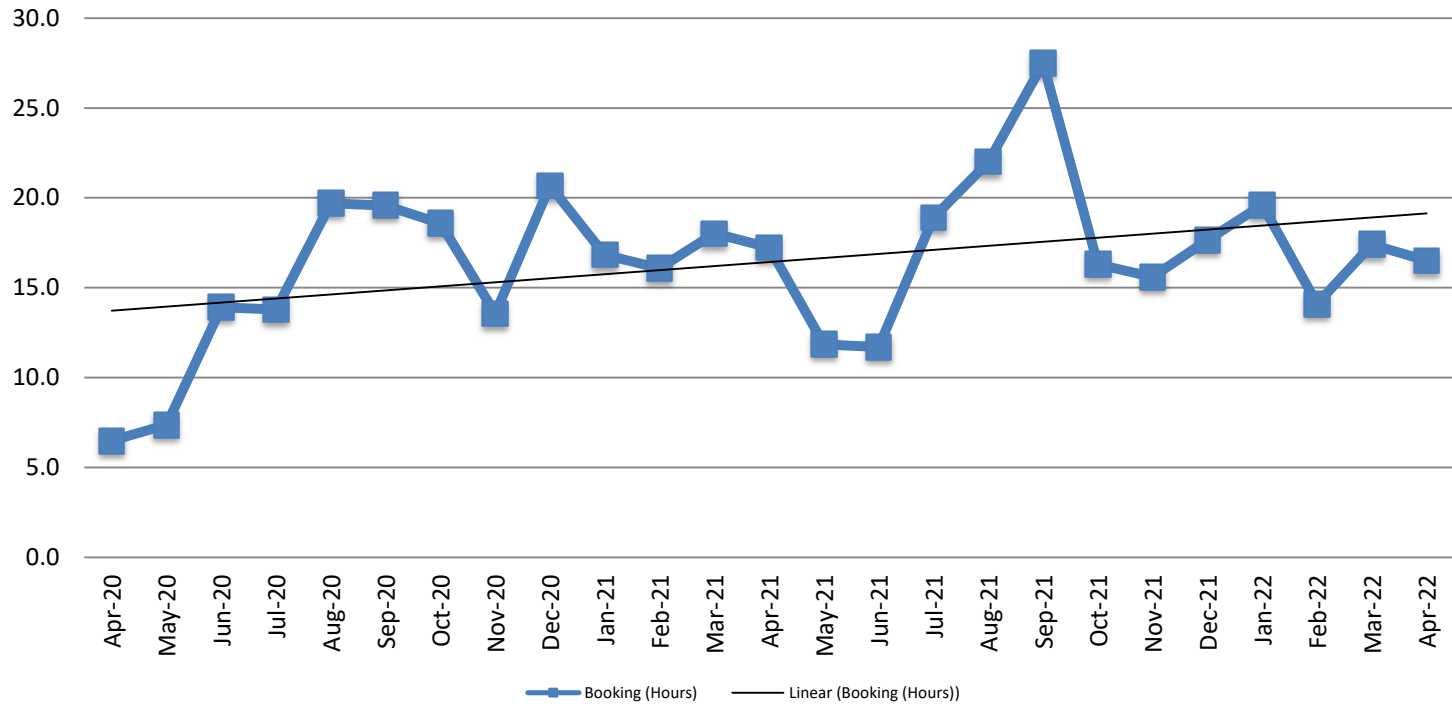
2021: 1,690

2022: 1,805



Sedgwick County...  
working for you

## Average Length of Stay: Booking (Hours) April 2020 - present

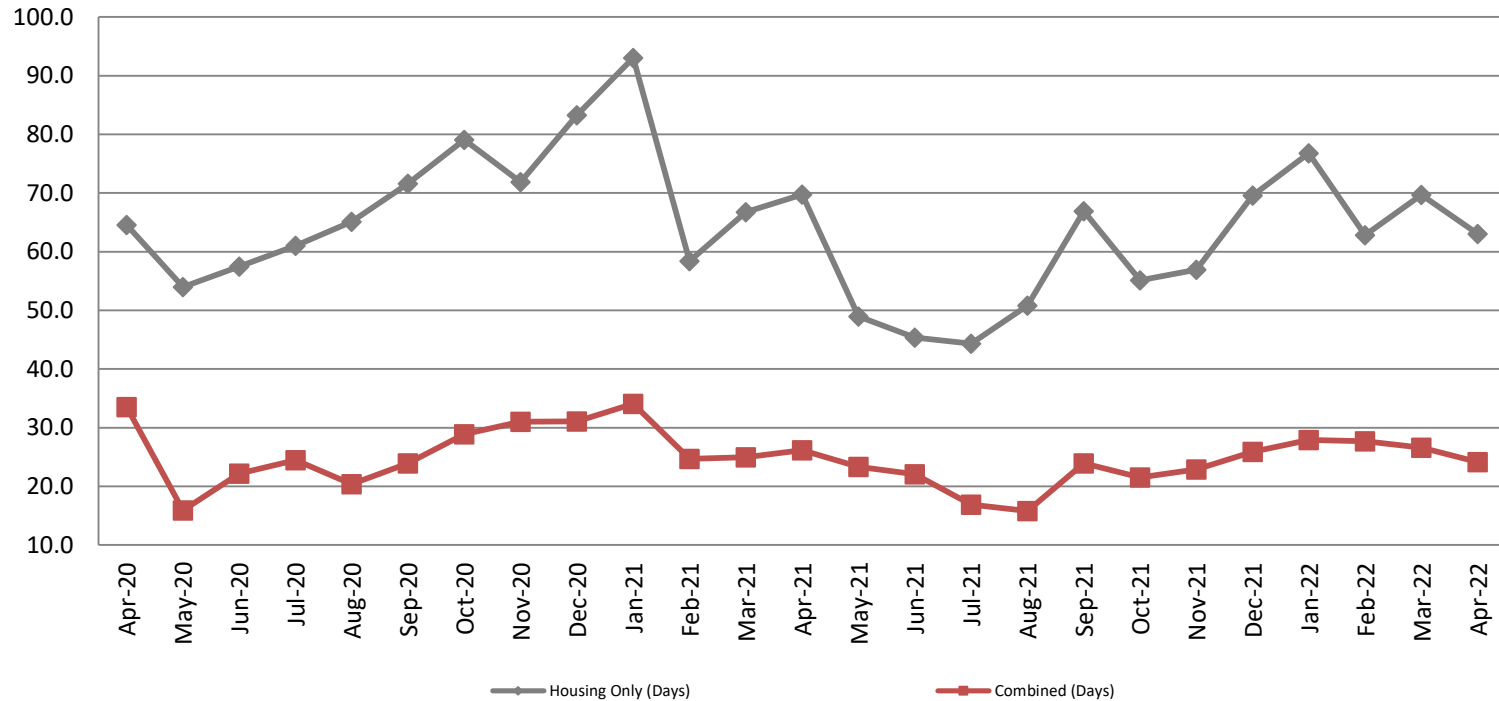


April	April YTD Average
2020: 6.5	2020: 14.3
2021: 17.2	2021: 17.0
2022: 16.5	2022: 16.9



# Average Length of Stay: Housing & Combined (Days)

April 2020 - present

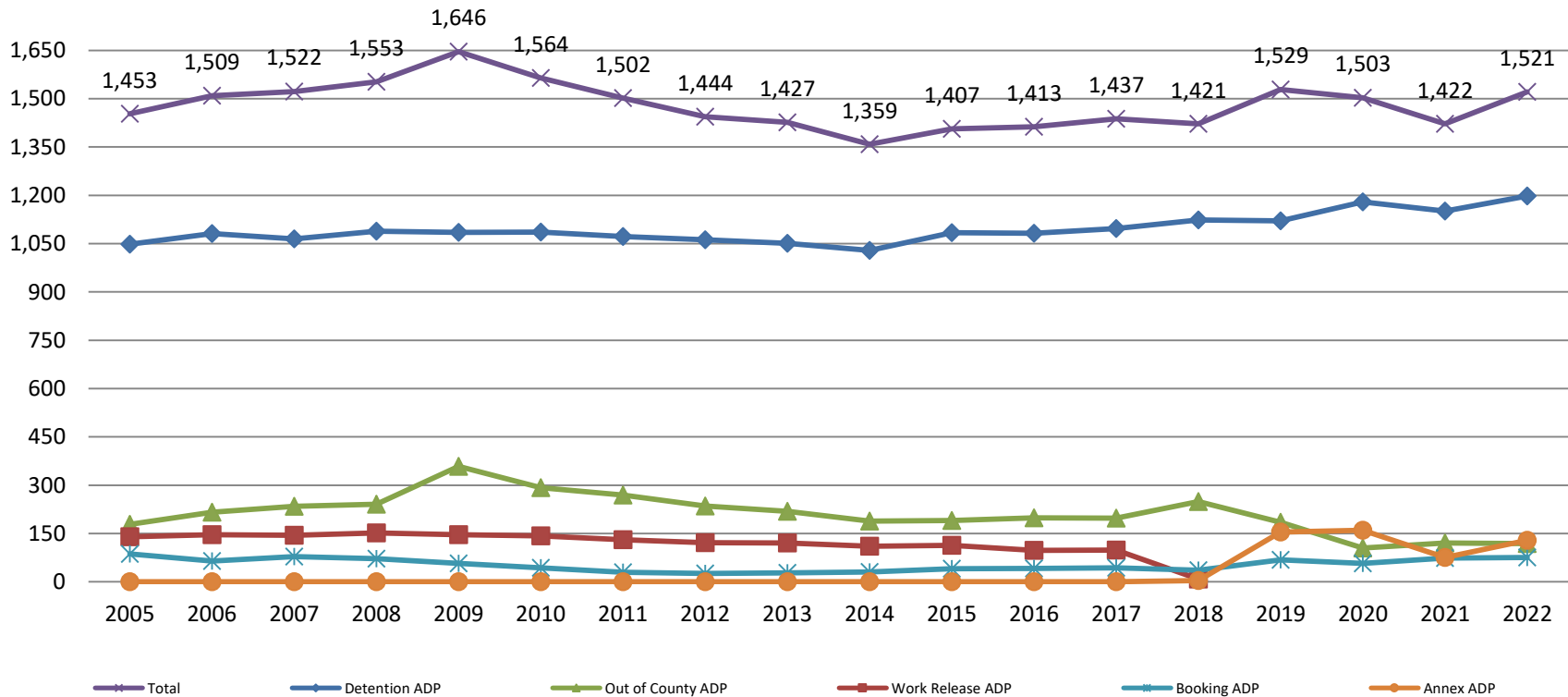


Month Year	Housing Only	Housing YTD AVG	Combined Days	Combined YTD AVG
April 2020	64.6	50.2	33.5	25.6
April 2021	69.8	72.0	26.2	27.5
April 2022	63.0	68.1	24.1	26.6



# Jail: Annual Average Daily Population (ADP)

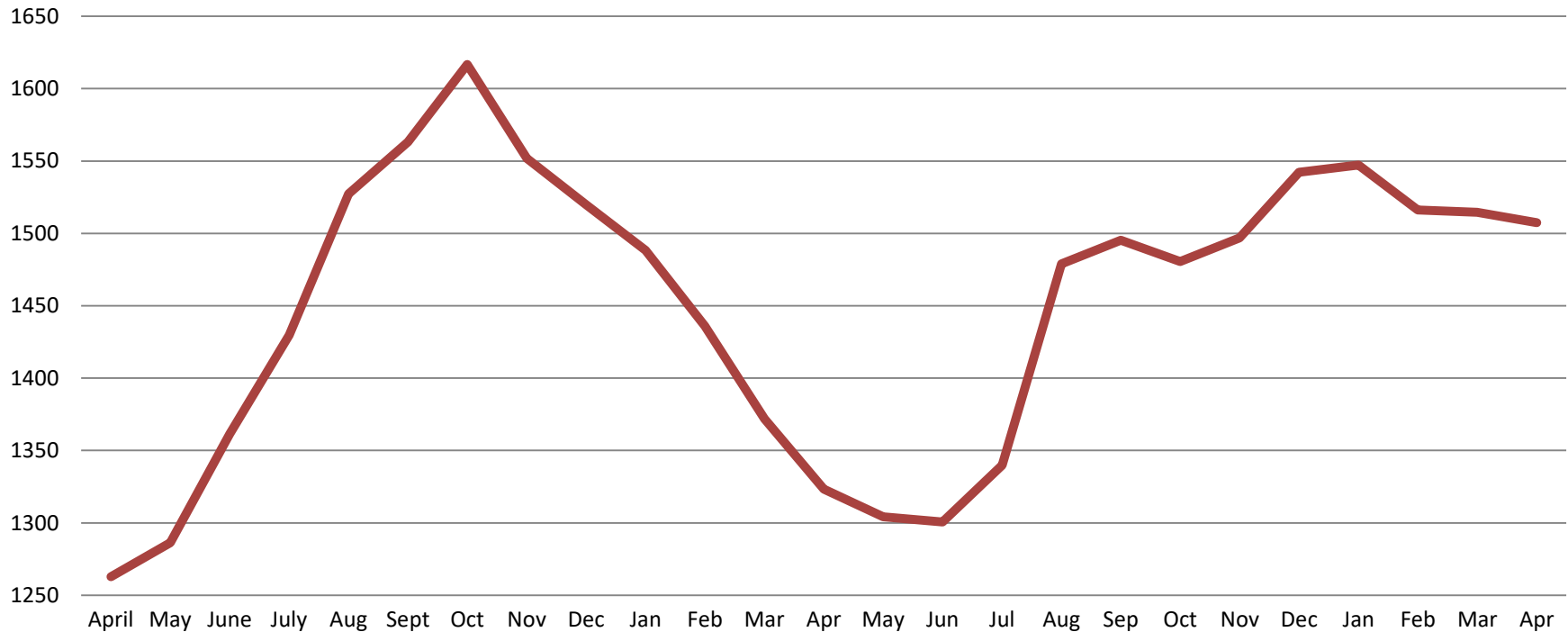
## TRENDS: Booking, Detention, Work Release, & Out of County Annual ADP: 2005 - present



# TOTAL MONTHLY ADP: JAIL

## (Booking, Detention Facility, Annex, & Out of County)

### April 2020 - present



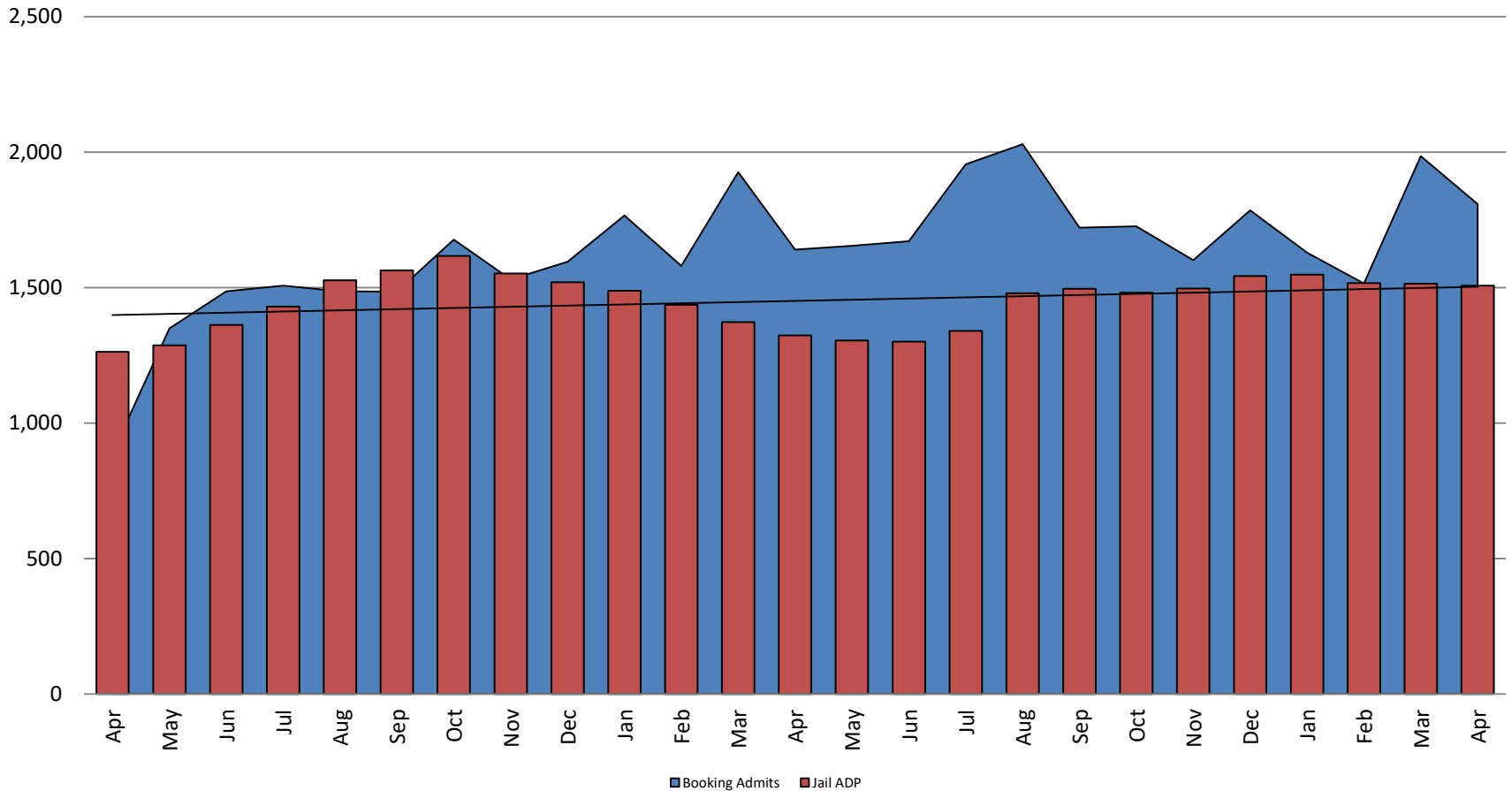
April 2020	April 2021	April 2022
1,263	1,323	1,508



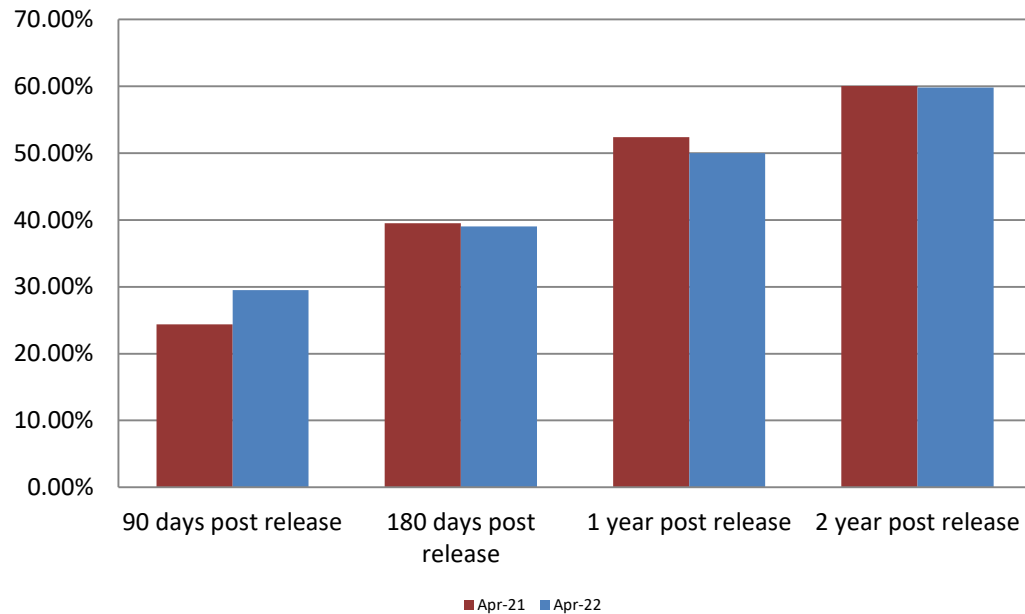
*Sedgwick County...*  
*working for you*

\*Beginning January 2018, Work Release program began transfer to Division of Corrections  
This slide shows total monthly ADP for individuals in booking, detention, work release, jail annex, and out-of county (combined)  
(data obtained from detention facility)

## Booking Admits & Total Monthly ADP (Jail): April 2020 - present



## Percent of Released Inmates Rearrested April

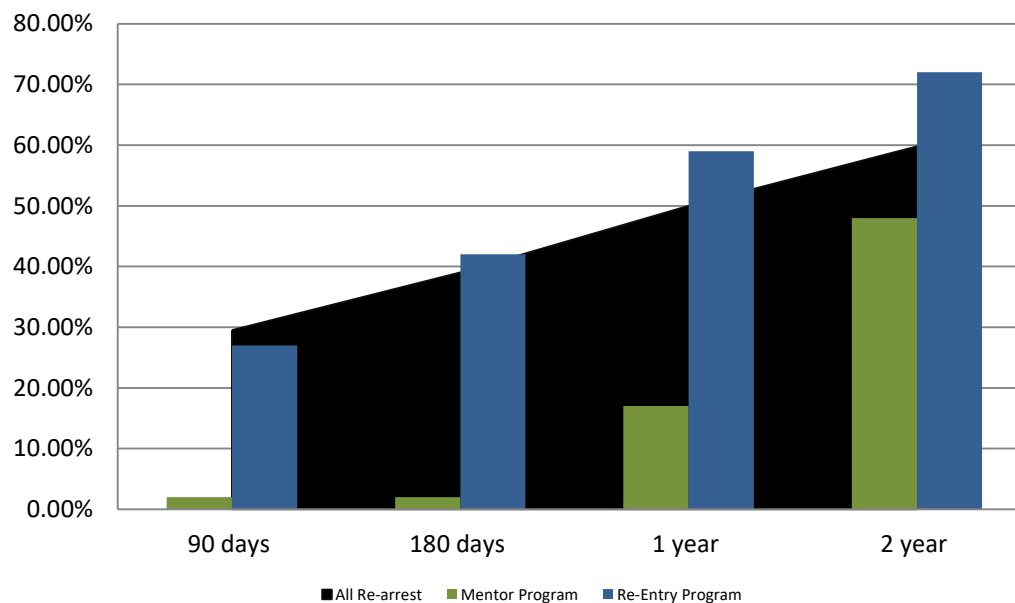


Month Year	90 Days	180 Days	1 Year	2 Years
April 2021	24.37%	39.51%	52.36%	60.02%
April 2022	29.51%	39.03%	50.00%	59.80%





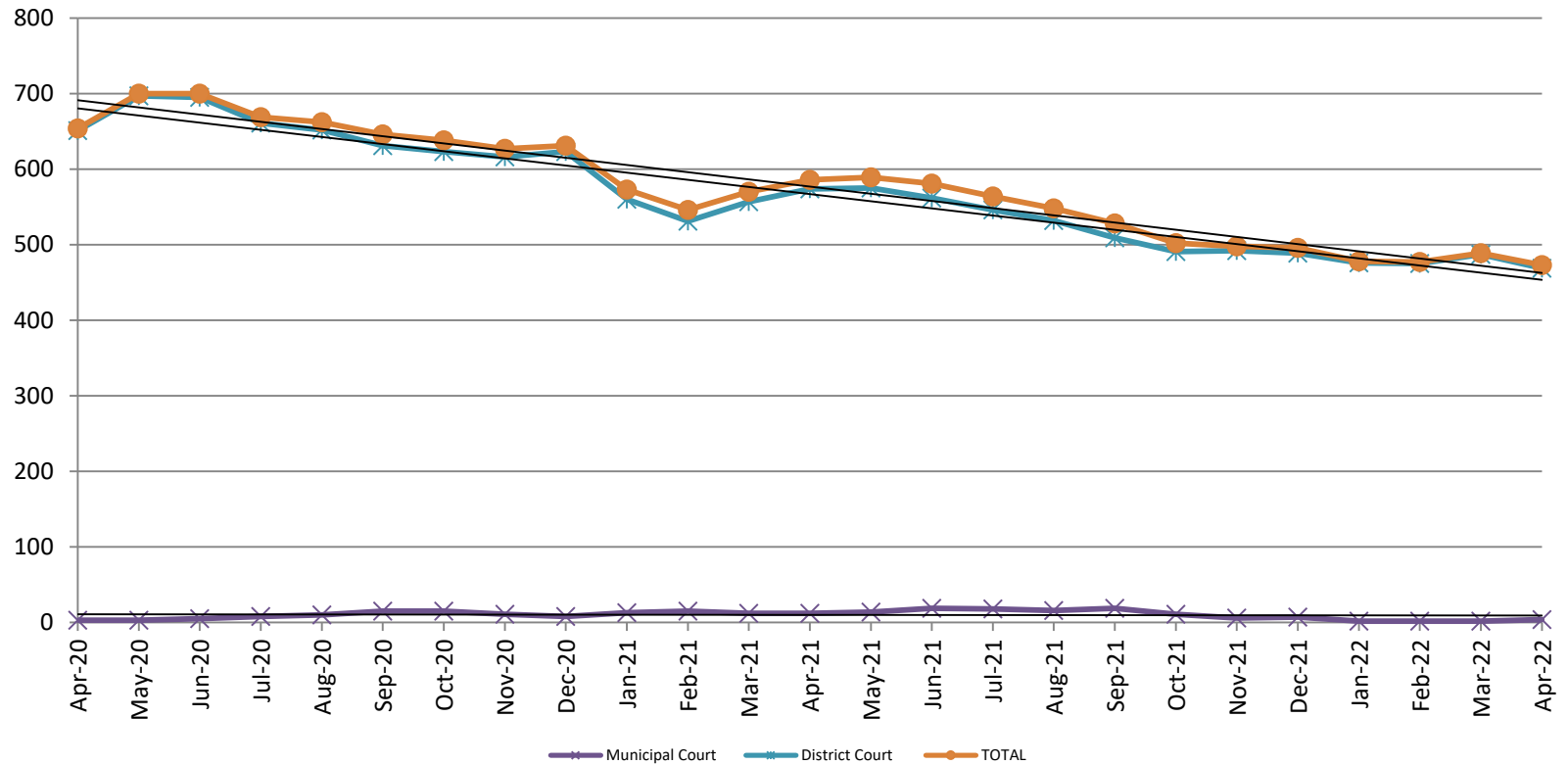
## Recidivism by Programs April 2022



April 2022	90 Days	180 Days	1 year	2 years
All Re-arrests	29.51%	39.03%	50.00%	59.80%
Mentor Program	2%	2%	17%	48%
Re-Entry Program	27%	42%	59%	72%



## Pretrial Services Program (PSP) Monthly ADP: April 2020 - present

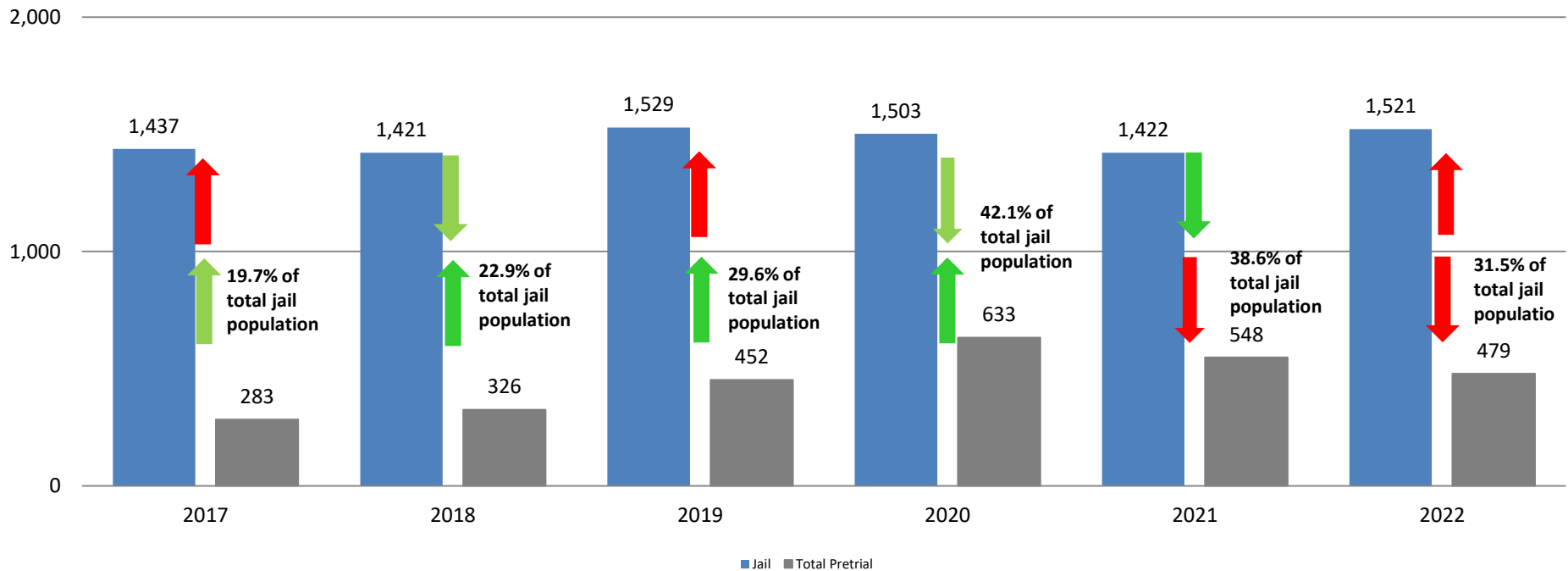


April	2020 ADP	2021 ADP	2022 ADP	2020 YTD Avg.	2021 YTD Avg.	2022 YTD Avg.
Muni. Court	3	12	4	4	13	2.5
Dist. Court	651	574	469	576	555.5	476.8
Total	654	586	473	580	568.75	479.3



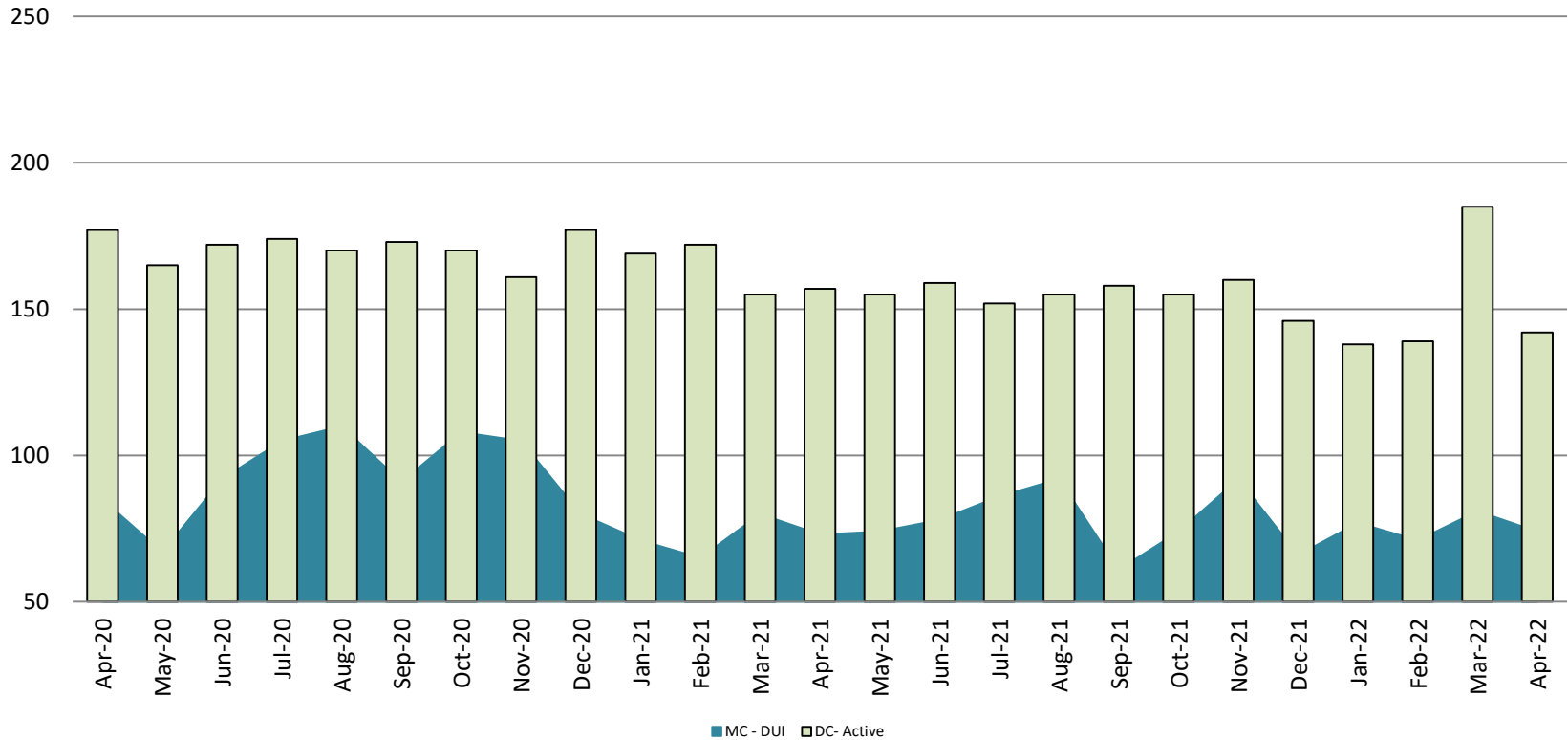
# Correlation: Total & PSP

## Total Annual ADP: 2017 - present



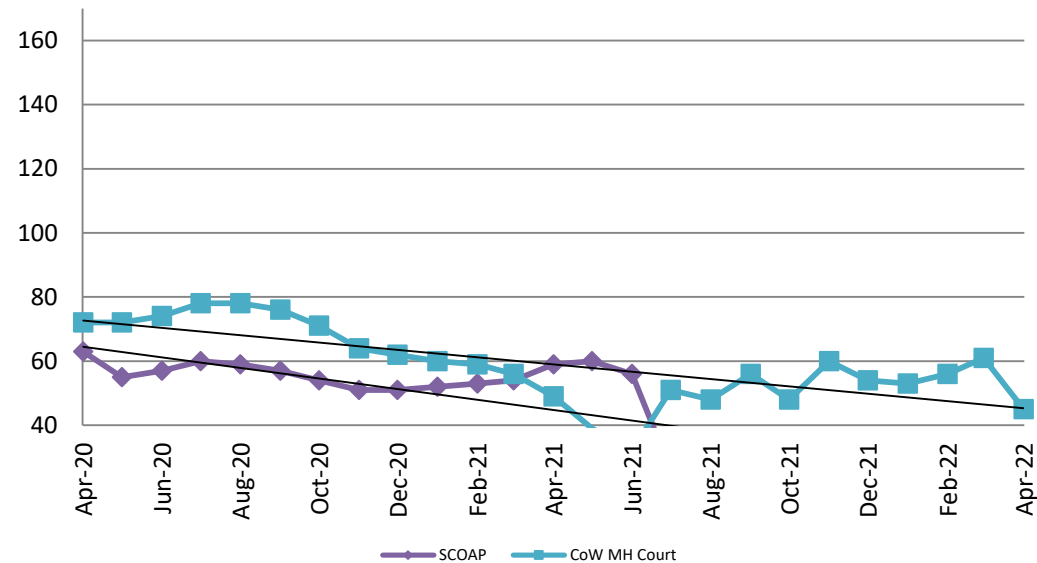
## Diversion - Active Caseload

April 2020 - present

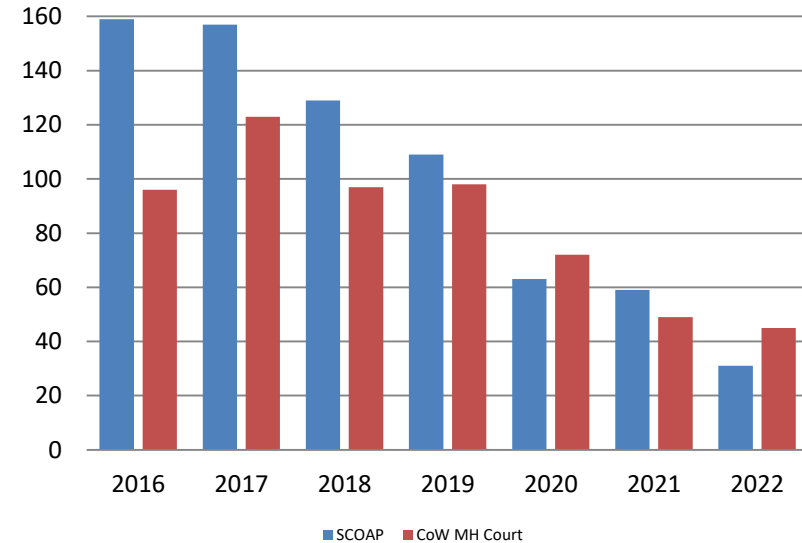


April	2020	2021	2022	2020 YTD Avg.	2021 YTD Avg.	2022 YTD Avg.
Muni. Court- DUI	85	73	74	94	73	76
Dist. Court- Active	177	157	142	188	163	151

## Mental Health - ADP April 2020 - present

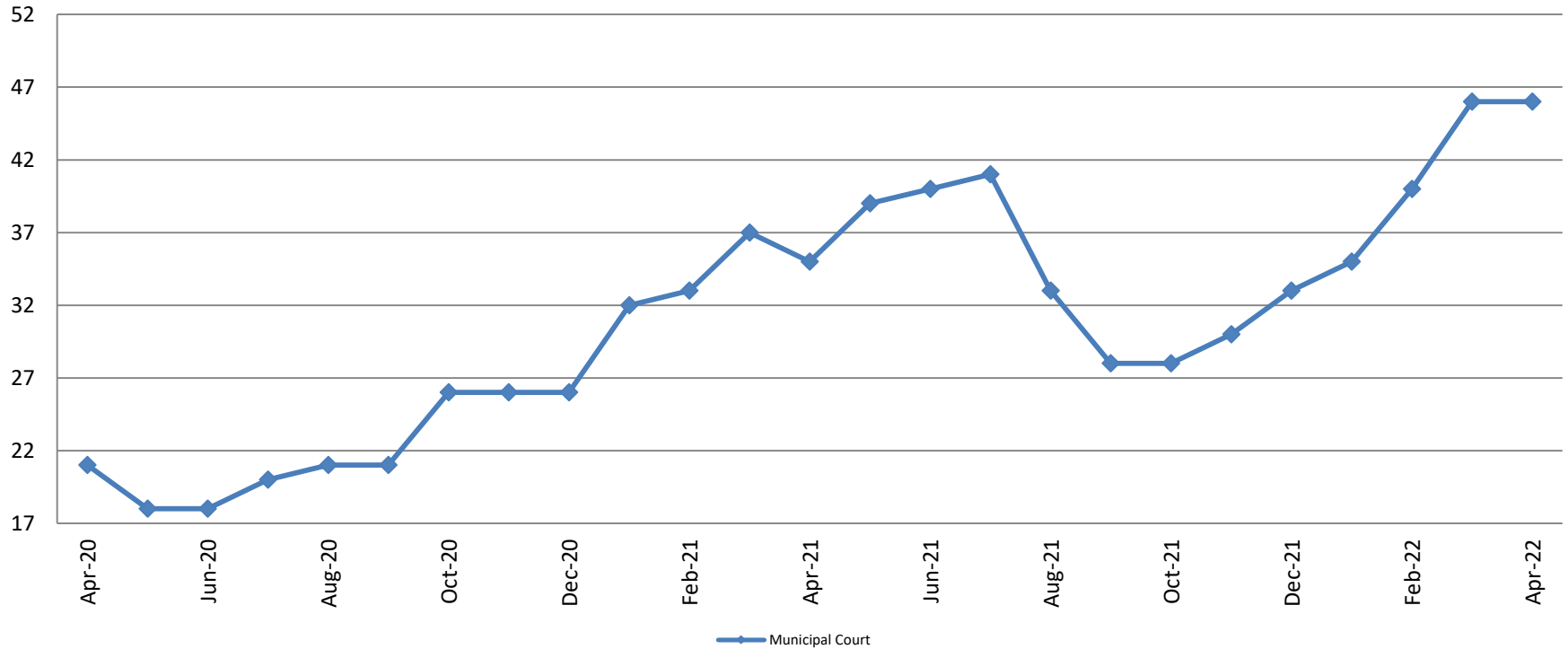


## Mental Health ADP Year over Year - April



April	2020 ADP	2021 ADP	2022 ADP	2020 YTD Avg.	2021 YTD Avg.	2022 YTD Avg.
SCOAP	63	59	31	75	55	30
MH Court	72	49	45	77	56	54

## Day Reporting - Active Caseload April 2020 - present



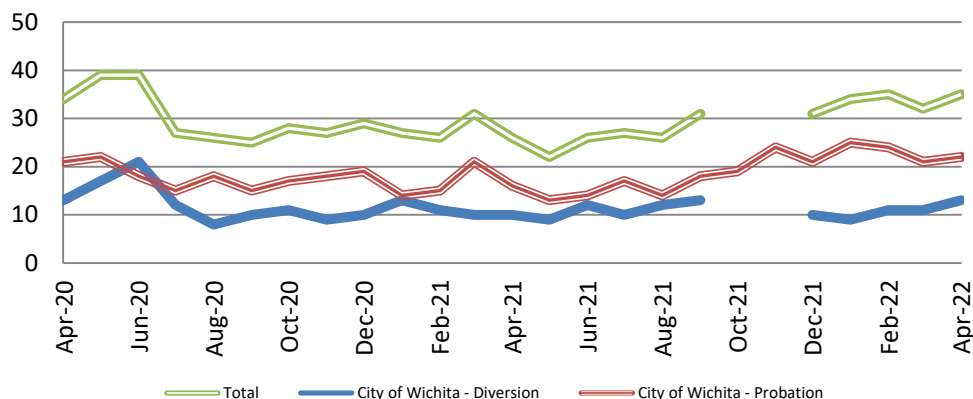
April	2017	2018	2019	2020	2021	2022
Muni. Court	31	38	31	21	35	46
Muni. Court YTD Avg.	33	39	31	23	34	44



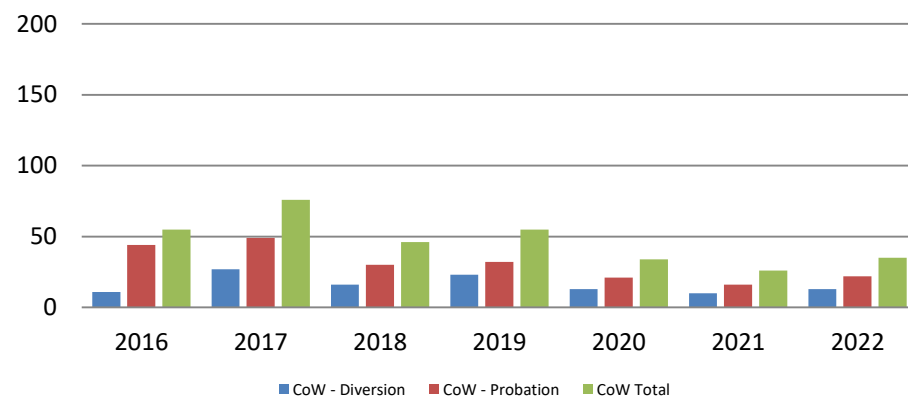
*Sedgwick County...*  
*working for you*

\*District Court funding ended on 6/30/2016  
(data obtained from DRC)

## Drug Court - City of Wichita ADP: April 2020 - present



## Drug Court- City of Wichita Year over Year - April

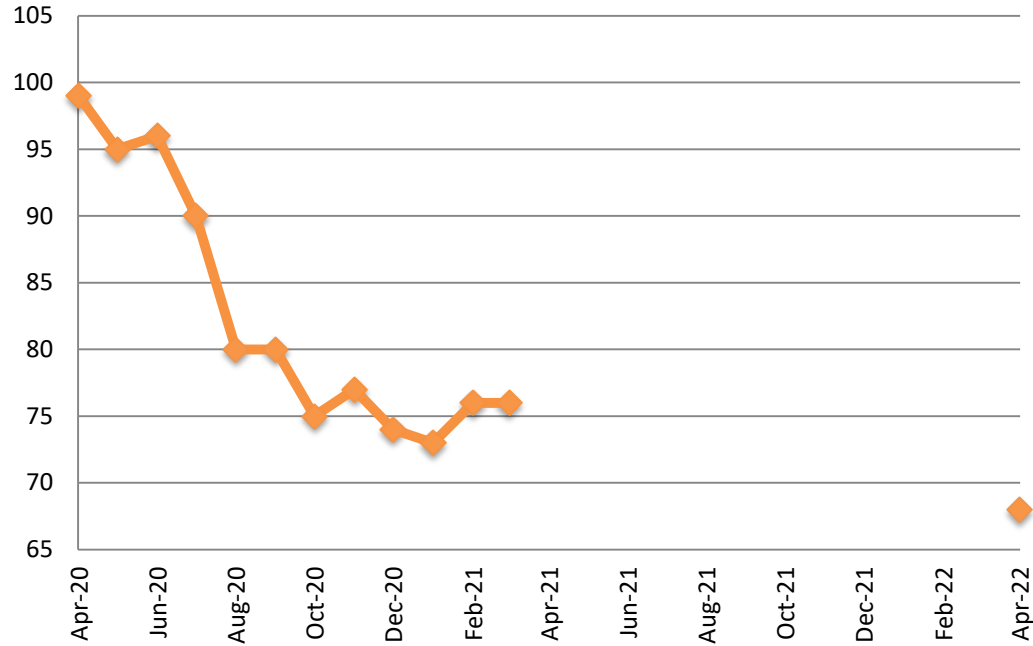


April	2020	2021	2022
Diversion	13	10	13
Probation	21	16	22
Total	34	26	35



## Drug Court - Sedgwick County

### ADP: April 2020 - present



April	2020	2021	2022
Sedg. Co. ADP	99	N/A	68
YTD Avg.	97	N/A	68



*Sedgwick County...*  
*working for you*

\*In 2021, KDOC changed databases and reports were not available 16

(data obtained from Pretrial Services)



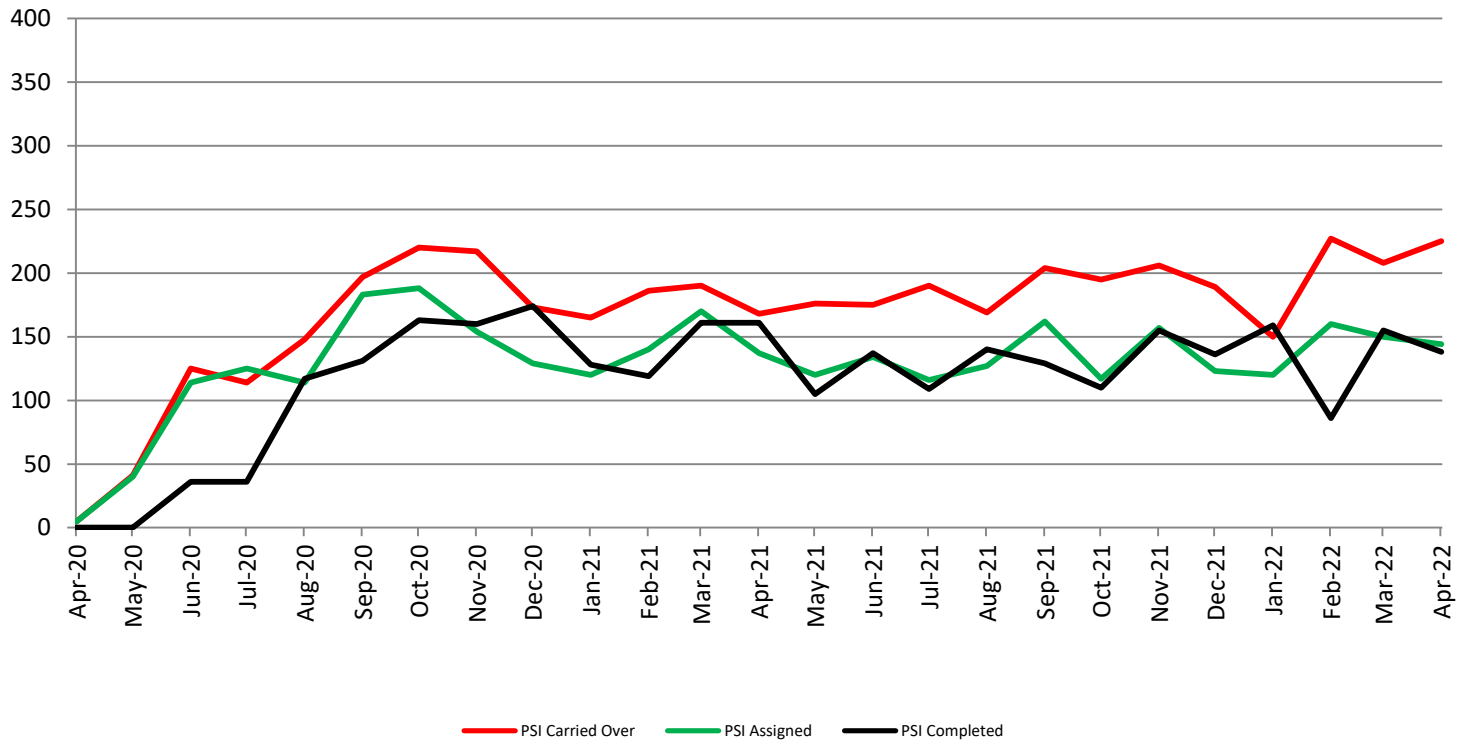
## Probation - Active Caseloads April 2020 - present



April	2020	2021	2022	2020 YTD Avg.	2021 YTD Avg.	2022 YTD Avg.
Dist. Court Probation	1,674	1,697	1,657	1,660	1,618	1,692
Muni. Court Probation	819	1,082	1,041	1,037	1,013	1,027



## District Court Probation: Pre-Sentence Investigation April 2020 - present

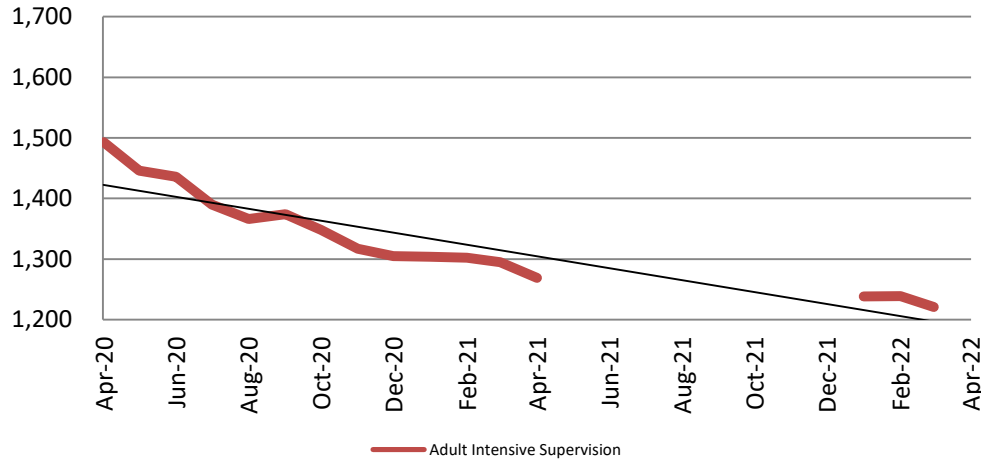


April	2020	2021	2022
Carried Over	5	168	225
Assigned	5	137	144
Completed	0	161	138



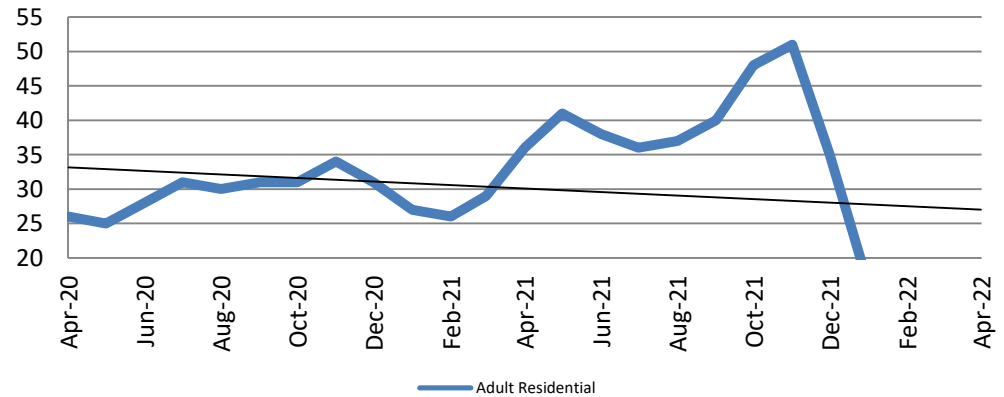
# Community Corrections

**Adult Intensive Supervision Probation (AISP):  
ADP April 2020 - present**



Year	April	April YTD Avg.
2020	1,493	1,539
2021	1,269	1,293
2022	N/A	1,233

**Adult Residential: ADP  
April 2020 - present**

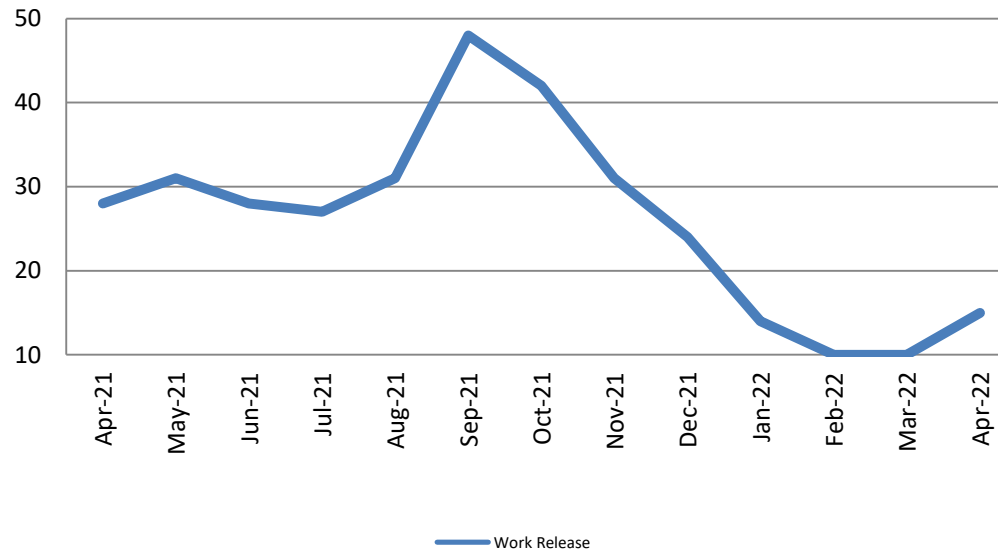


Year	April	April YTD Avg.
2020	26	49
2021	36	30
2022	7	10



# Community Corrections

## Work Release: ADP April 2021 - present

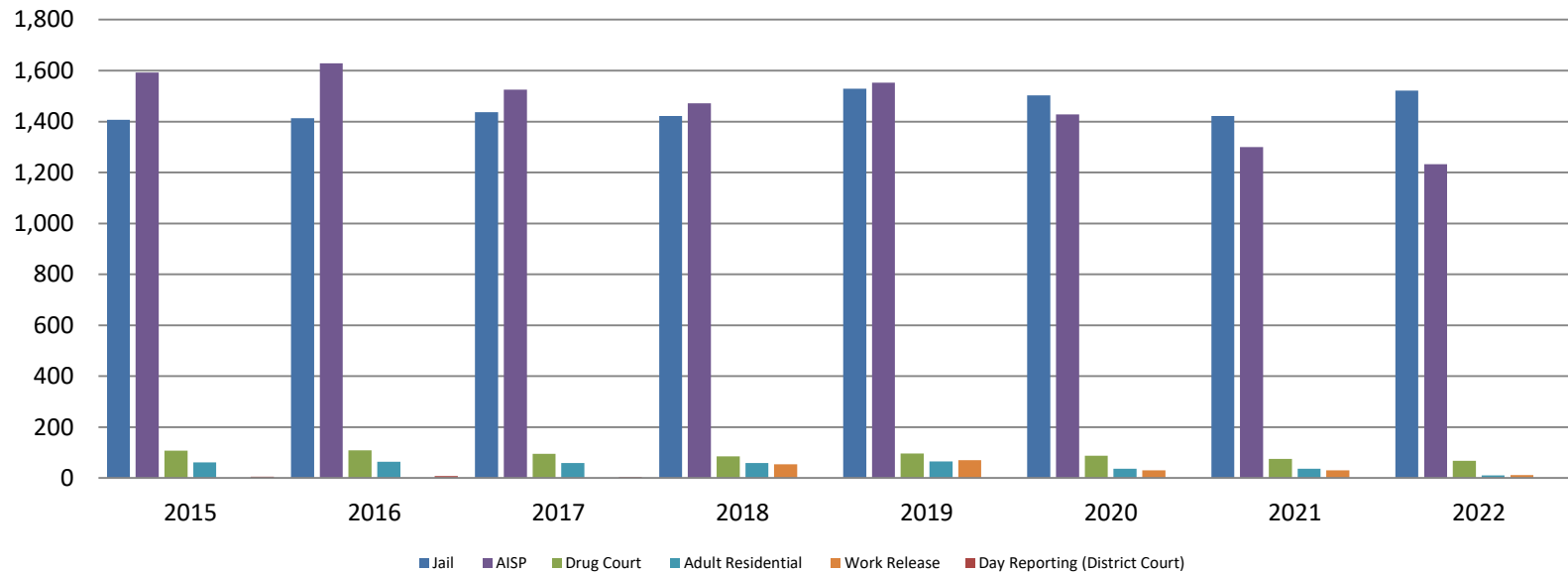


Month Year	Total	YTD Avg.
April 2021	28	25
April 2022	15	12



# Correlation: Total & Sedgwick County Programs (Adult)

## Total Annual ADP 2015 - present



	2020	2021	2022
Jail	1,503	1,422	1,521
AISP	1,428	1,300	1,233
Drug Court	88	75	68
Adult Residential	36	37	10
Work Release	30	30	12
Day Reporting (DC)	0	0	0

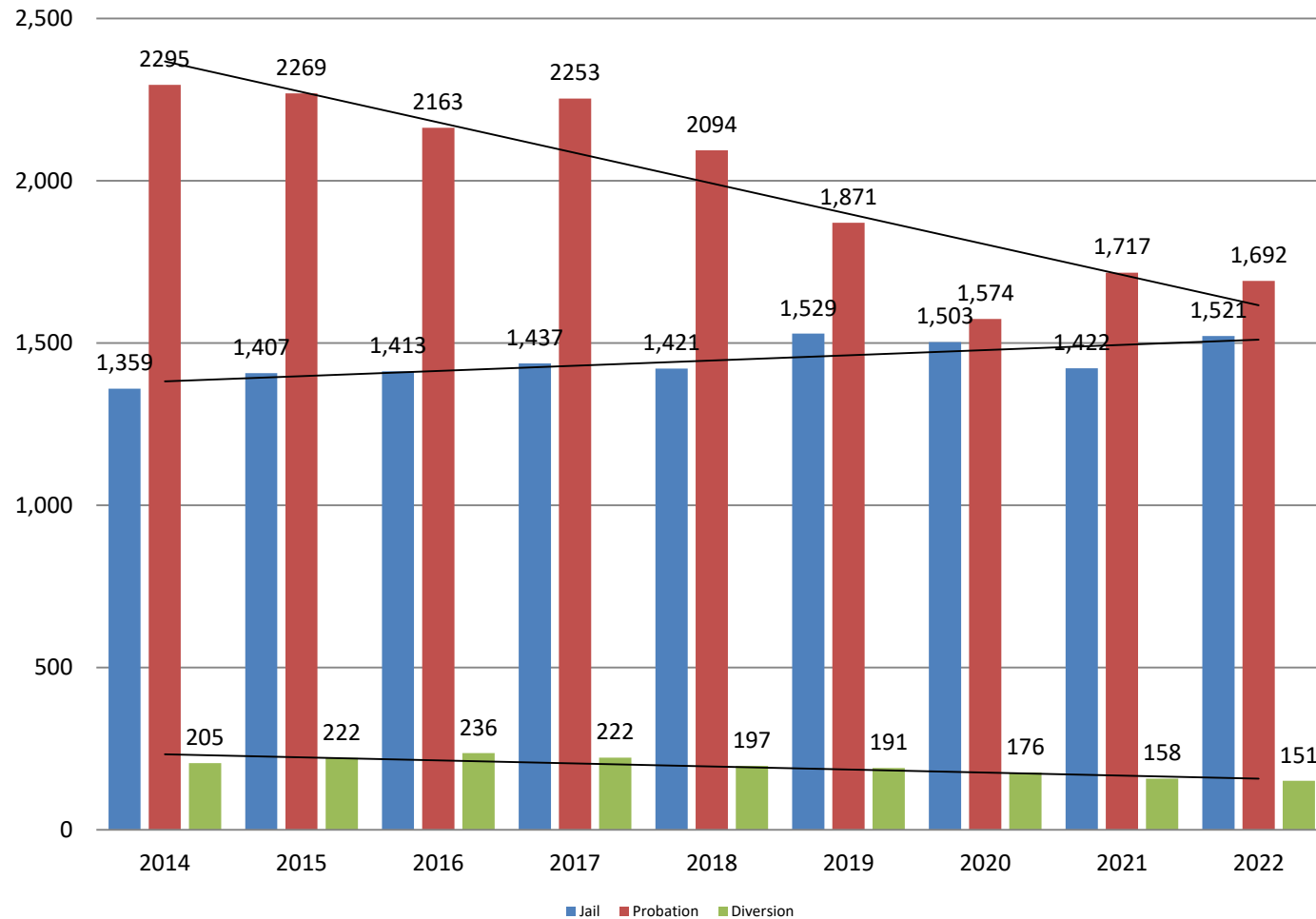


Sedgwick County...  
working for you

Jail includes individuals in booking, detention, work release and out-of county (combined)  
(data obtained from detention facility, SG Dept. of Corrections, Pretrial Services, & CoW)

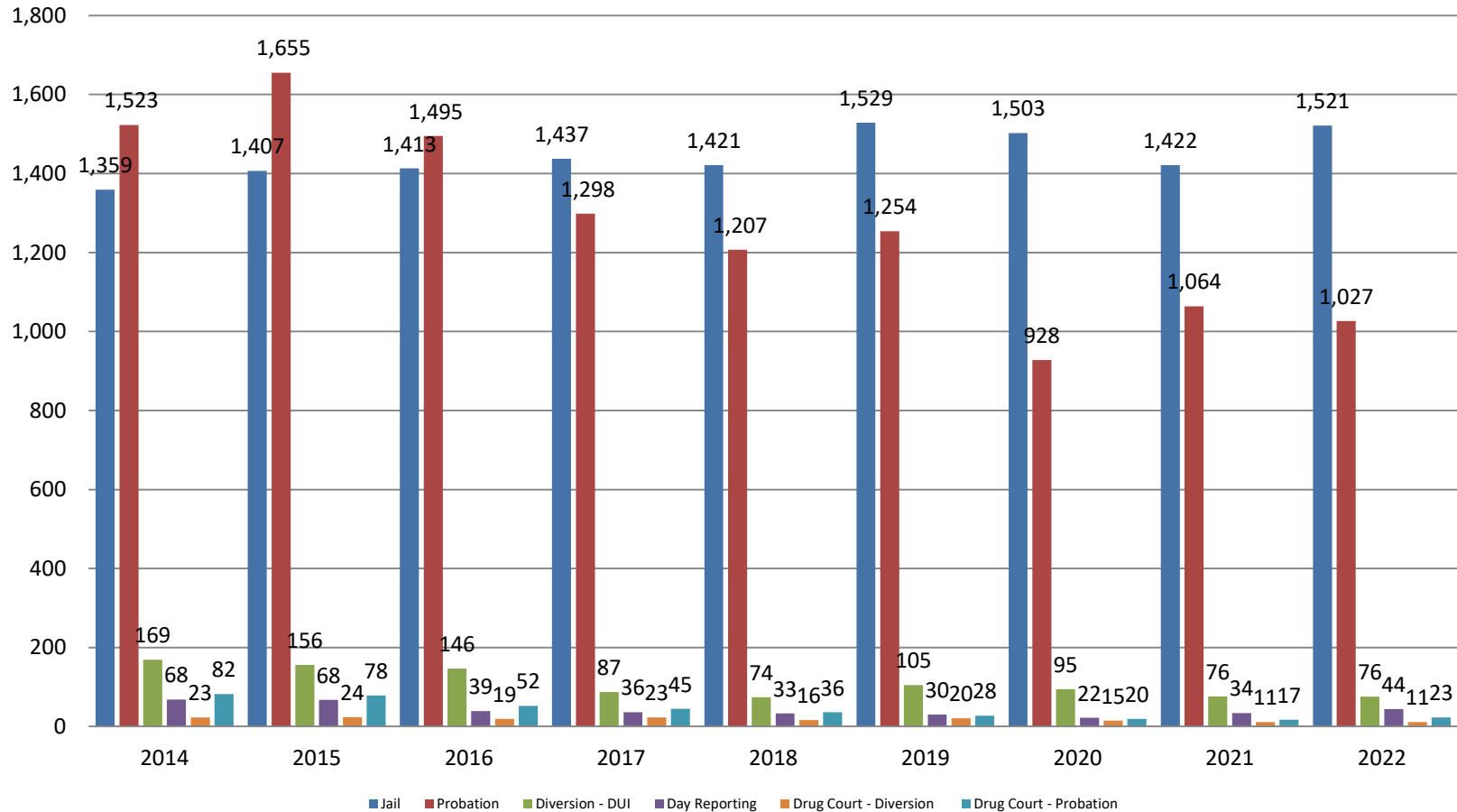
# Correlation: Total & District Court Programs

**Total Annual ADP: 2014 - present**



# Correlation: Total & City of Wichita / Municipal Court Programs

**Total Annual ADP: 2014 - present**

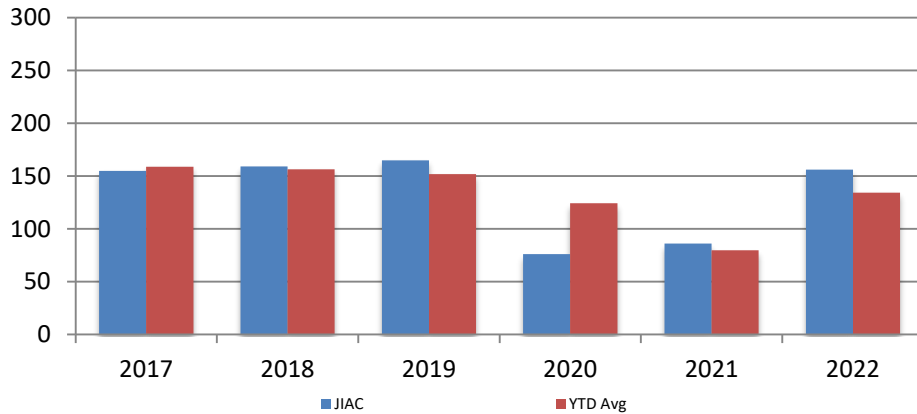


*Sedgwick County...*  
*working for you*

Jail includes individuals in booking, detention, work release and out-of county (combined)  
(data obtained from detention facility, CoW, & Pretrial Services)

# Juvenile

**JIAC Intakes**  
**April 2017 - present**

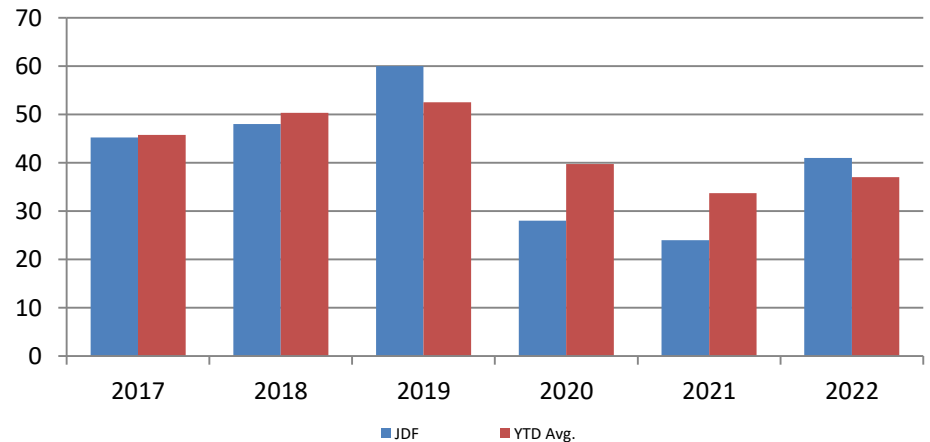


Year	April	April YTD Avg.
2017	155	159
2018	159	156
2019	165	152
2020	76	124
2021	86	80
2022	156	134

**Year**      **April**      **April YTD Avg.**

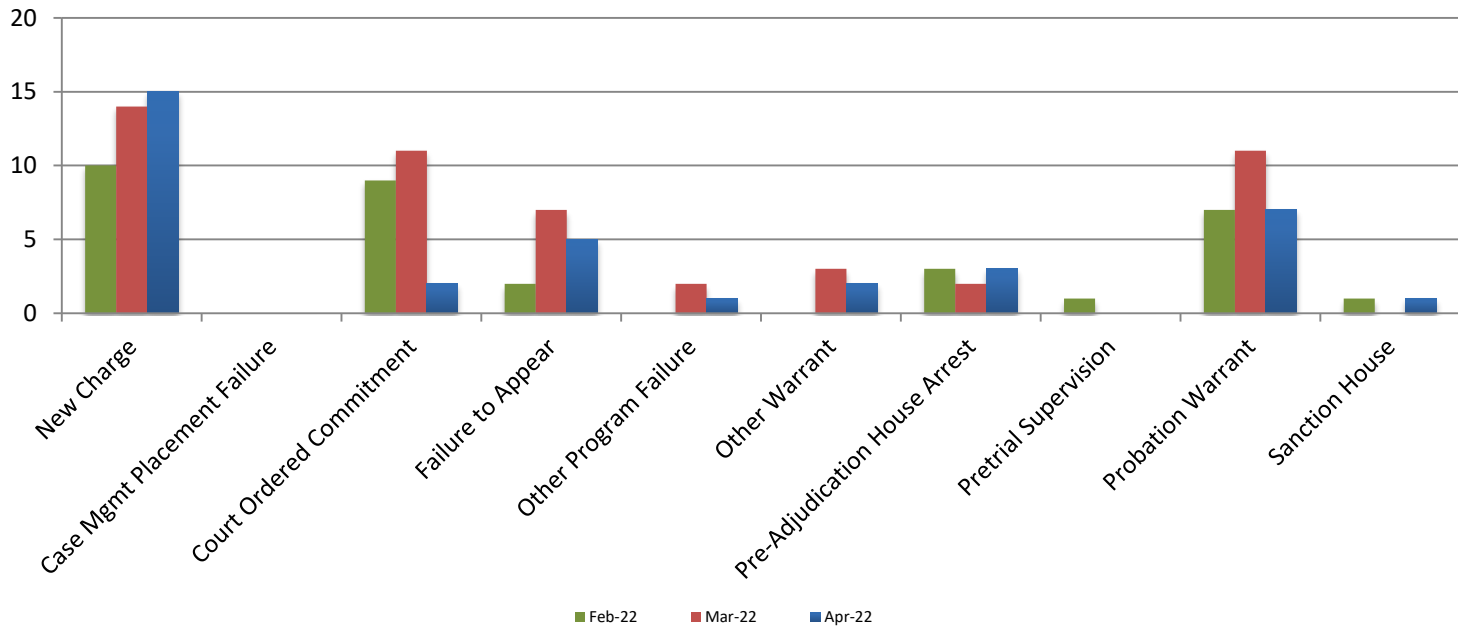
2017	45	46
2018	48	50
2019	60	53
2020	28	40
2021	24	34
2022	41	37

**JDF ADP**  
**April 2017 - present**





# Reason for JDF Admits



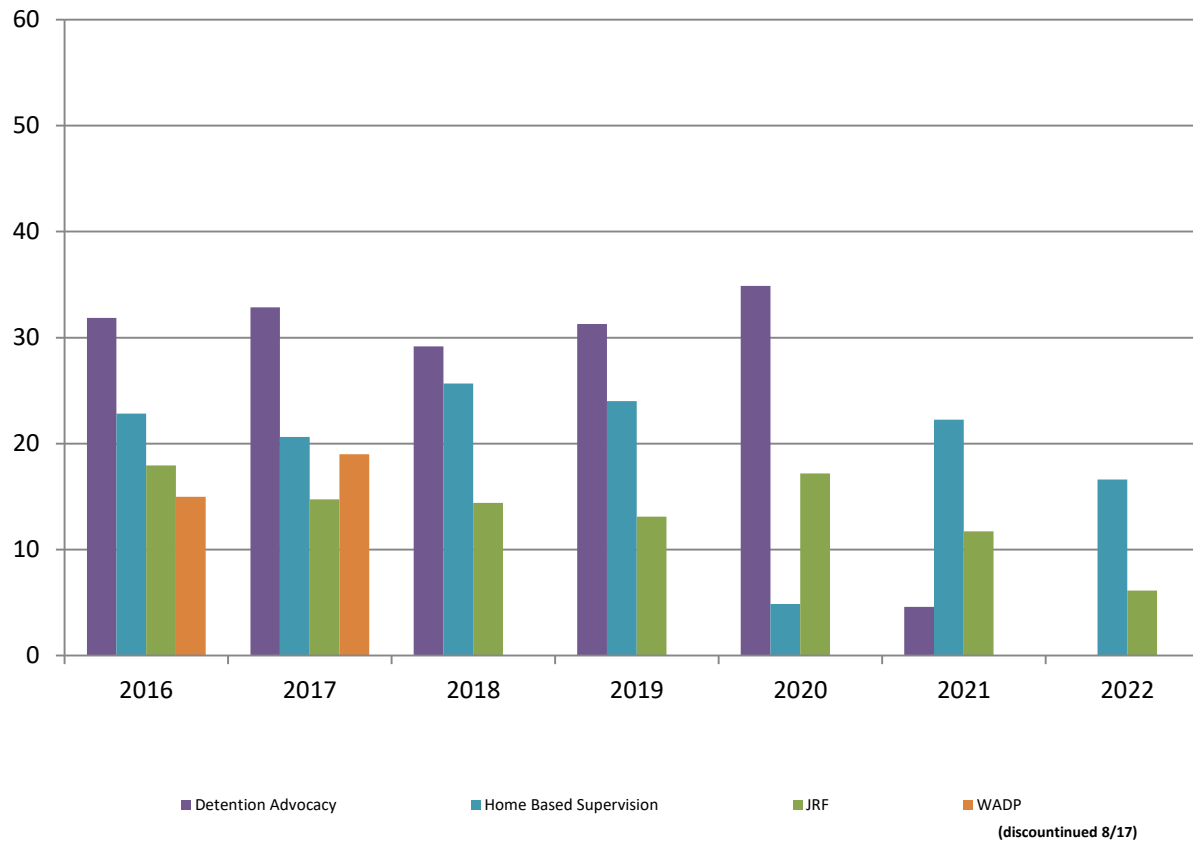
## Reason for JDF Admits

Reason	April 2021	April 2022
New Charges	7	15
Case Management Placement Failures	0	0
Court Ordered Commitment	7	2
Failure to Appear	2	5
Other Program Failure	1	1
Other Warrant	3	2
Pre-Adjudication House Arrest	3	3
Pretrial Supervision	0	0
Probation Warrant	1	7
Sanction House	0	1



# Juvenile Detention Alternatives

**ADP: April 2016 - present**



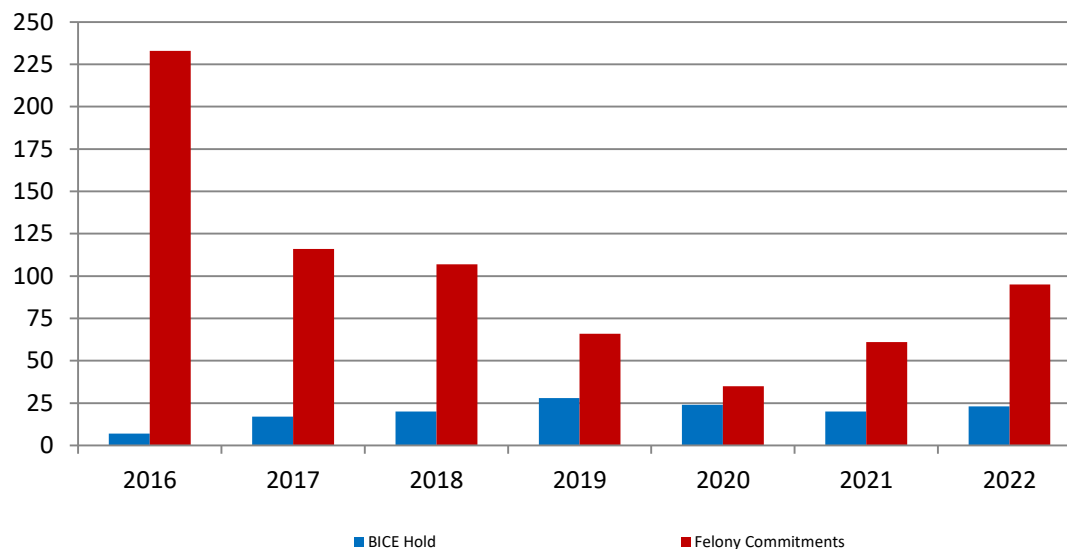
# Juvenile Detention Services

<b>April ADP</b>	<b>2019</b>	<b>2020</b>	<b>2021</b>	<b>2022</b>
Juvenile Detention Facility	60	28	24	41
Juvenile Residential Facility	13	17	12	6
Home Based Supervision	24	5	22	17
Detention Advocacy Case Management Services	31	35	5	0
Weekend Alternative Detention Program (total)	N/A	N/A	N/A	N/A

<b>April YTD AVERAGE</b>	<b>2019</b>	<b>2020</b>	<b>2021</b>	<b>2022</b>
Juvenile Detention Facility	53	40	34	37
Juvenile Residential Facility	13	18	9	8
Home Based Supervision	28	21	23	19
Detention Advocacy Case Management Services	29	17	4	1
Weekend Alternative Detention Program	N/A	N/A	N/A	N/A

# Monthly Jail Snapshot: April

## Snapshots April 2016 - present

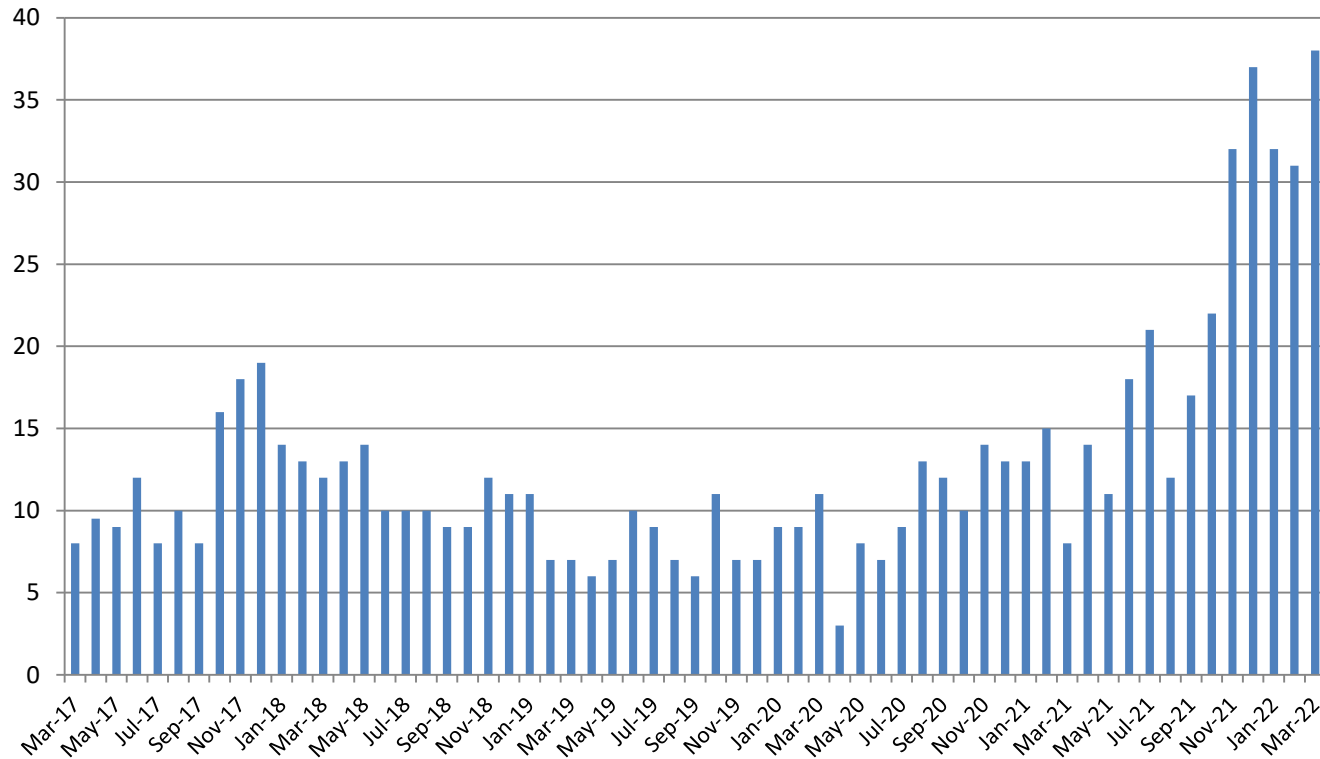


BICE Hold	2016	2017	2018	2019	2020	2021	2022
April	7	17	20	28	24	20	23
Felony Commitments	2016	2017	2018	2019	2020	2021	2022
April	233	116	107	66	35	61	95



## Journal Entry Completion (Average Days)

### March 2016 - present



March	2017	2018	2019	2020	2021	2022
Avg. Days	8	12	7	11	8	38
YTD Avg.	8	13	8.3	10	12	36.6

