

# Criminal Justice Coordinating Council

## Population Report & Program Trends

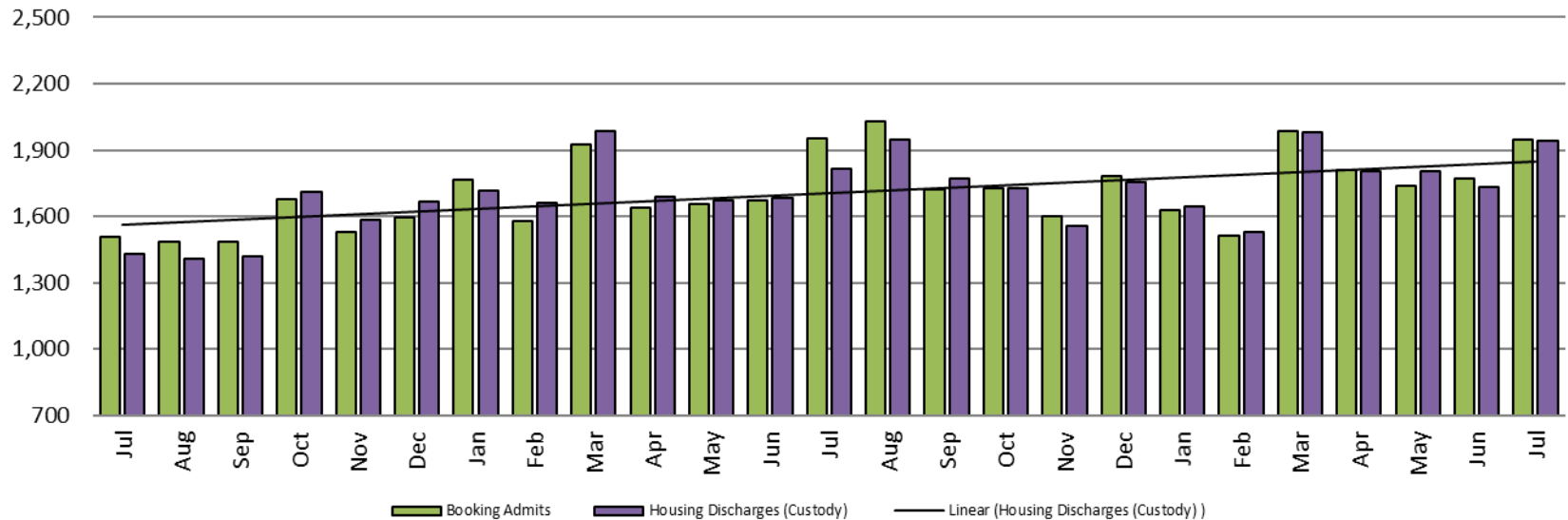
July 2022



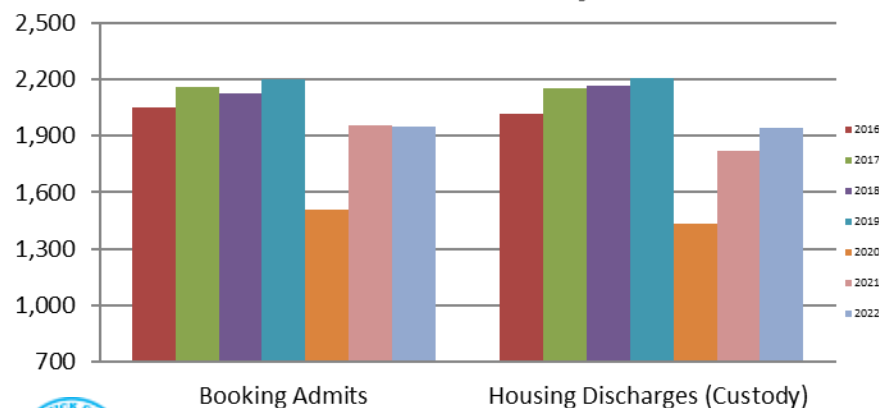
*Sedgwick County...*  
*working for you*

# Detention Facility

## Booking Admits & Housing Discharges from Custody July 2020 - present



### Bookings Year over Year: Month of July



#### Bookings July

2020: 1,507

2021: 1,955

2022: 1,948

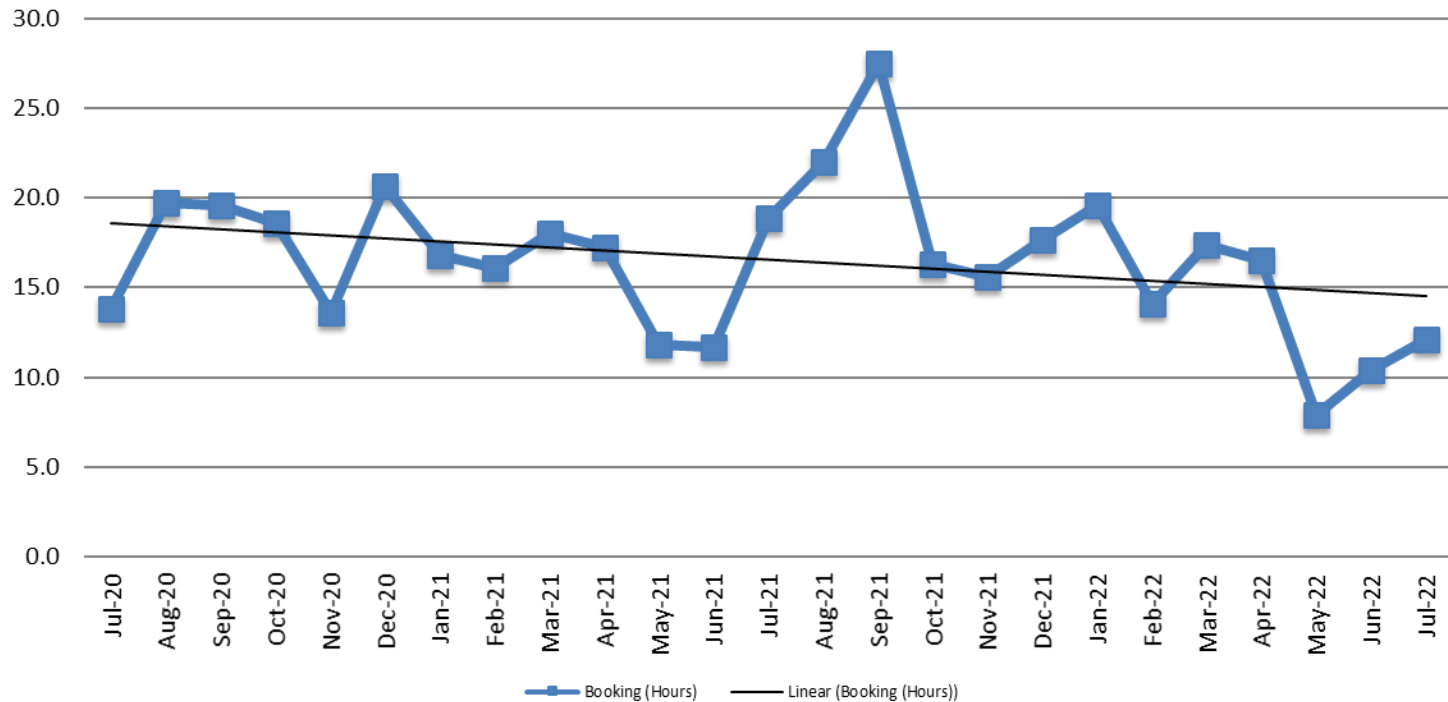
#### Housing Discharges July

2020: 1,432

2021: 1,817

2022: 1,943

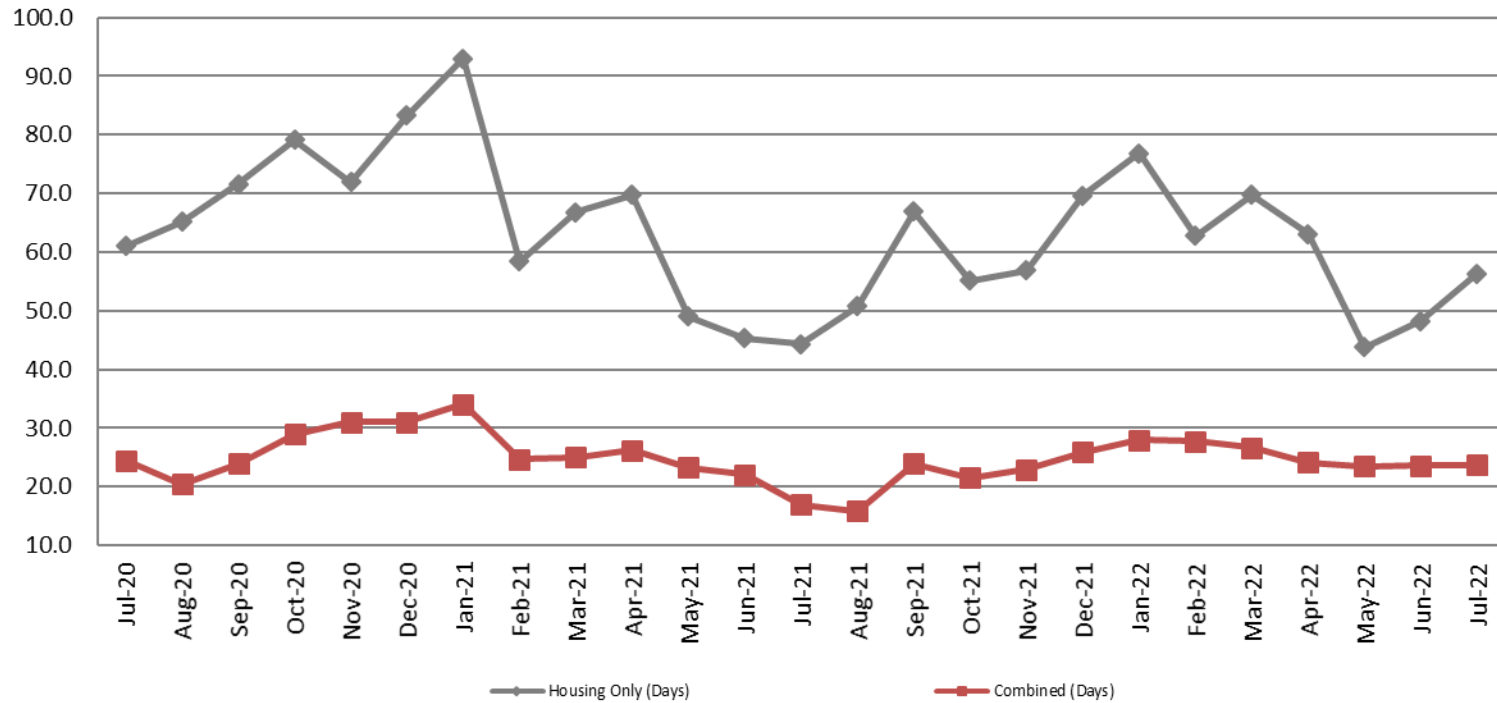
## Average Length of Stay: Booking (Hours) July 2020 - present



July	July YTD Average
2020: 13.8	2020: 13.2
2021: 18.9	2021: 15.8
2022: 12.13	2022: 14.0



## Average Length of Stay: Housing & Combined (Days) July 2020 - present

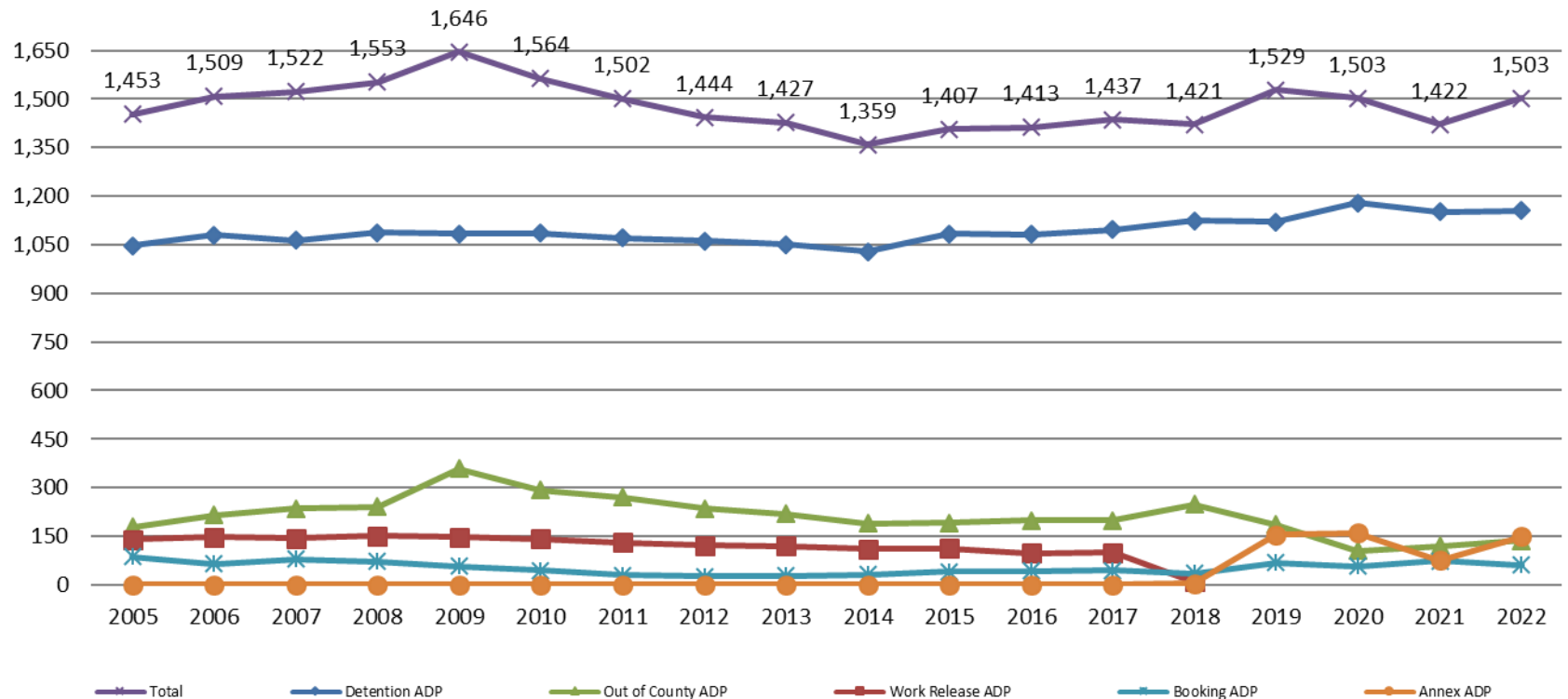


Month Year	Housing Only	Housing YTD AVG	Combined Days	Combined YTD AVG
July 2020	61.0	53.3	24.5	23.6
July 2021	44.3	60.9	16.9	24.6
July 2022	56.3	60.1	23.8	25.3

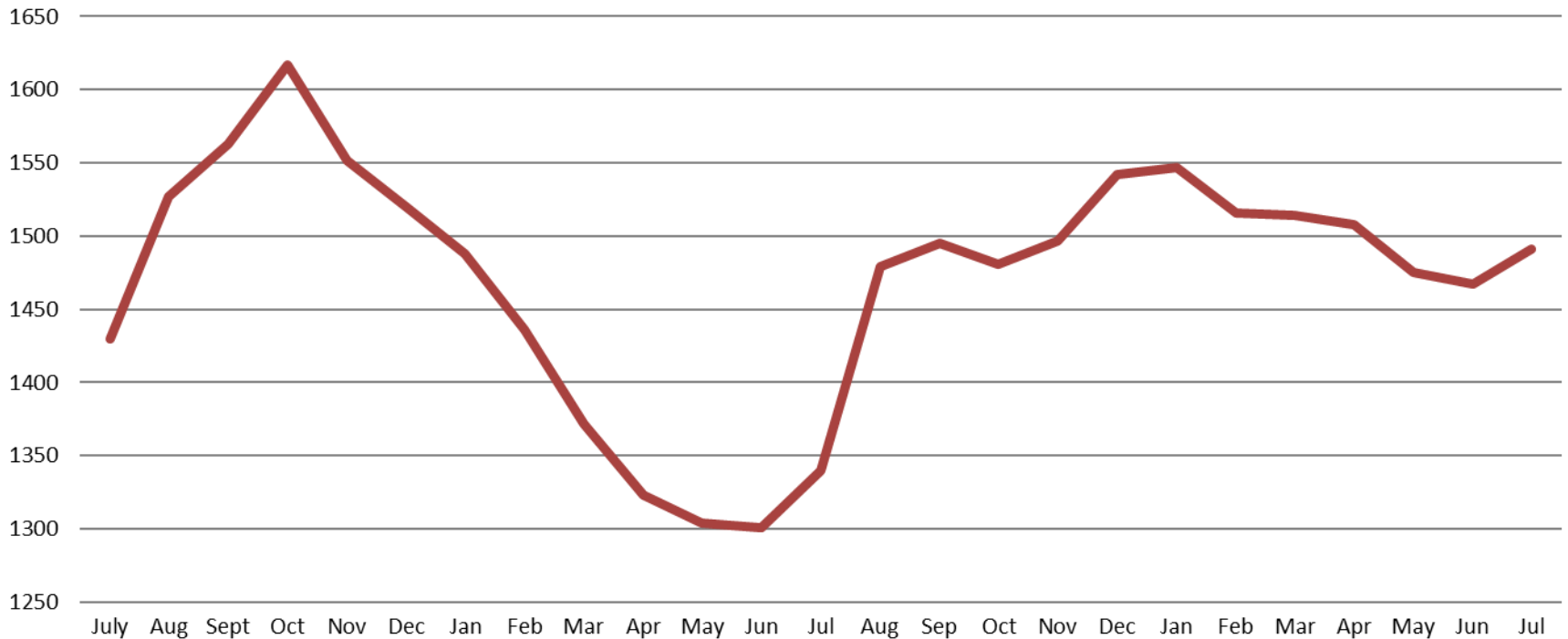


# Jail: Annual Average Daily Population (ADP)

## TRENDS: Booking, Detention, Work Release, & Out of County Annual ADP: 2005 - present



# TOTAL MONTHLY ADP: JAIL (Booking, Detention Facility, Annex, & Out of County) July 2020 - present



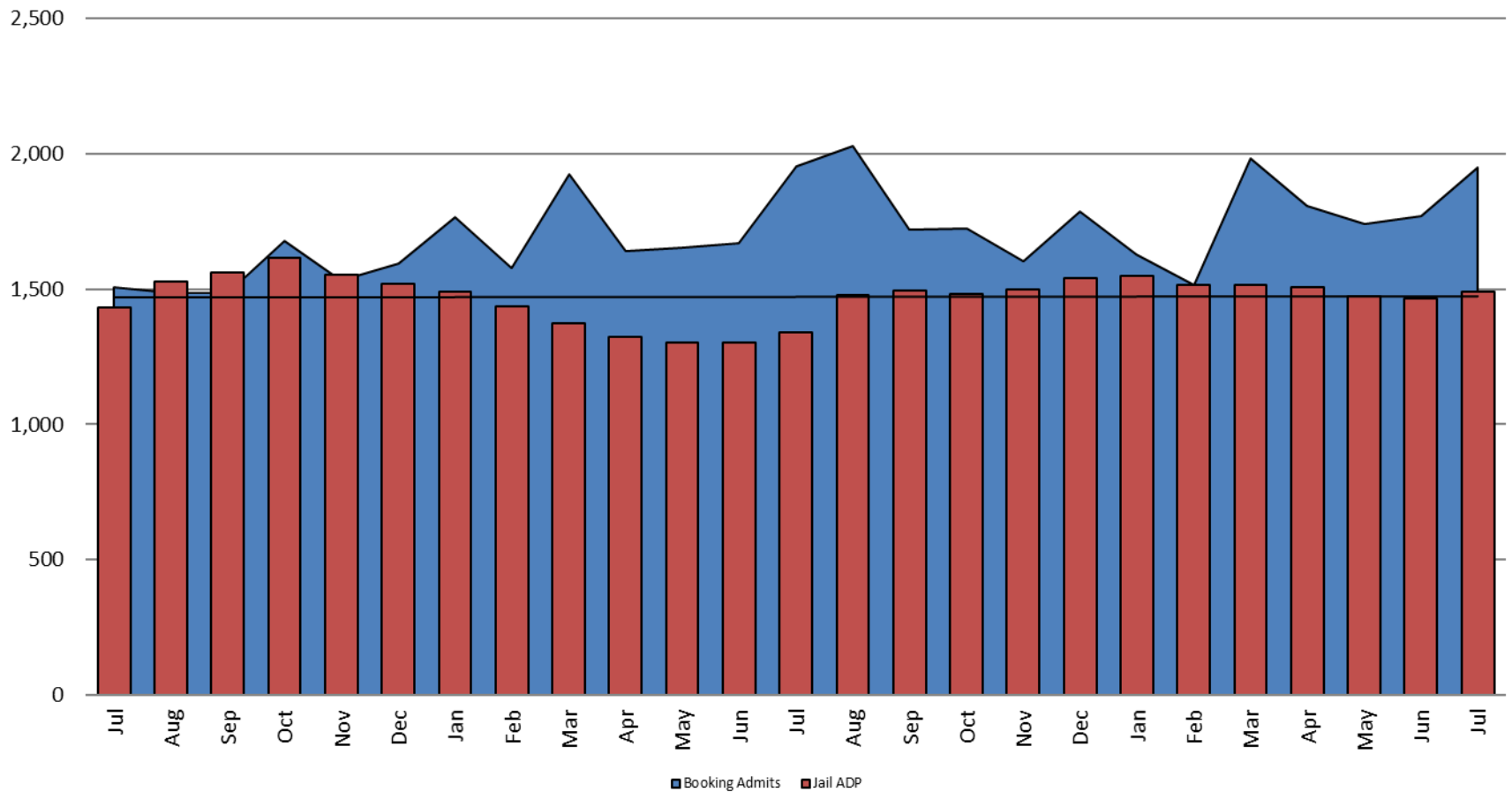
July 2020	July 2021	July 2022
1,430	1,340	1,491



*Sedgwick County...*  
*working for you*

\*Beginning January 2018, Work Release program began transfer to Division of Corrections  
This slide shows total monthly ADP for individuals in booking, detention, work release, jail annex, and out-of county (combined)  
(data obtained from detention facility)

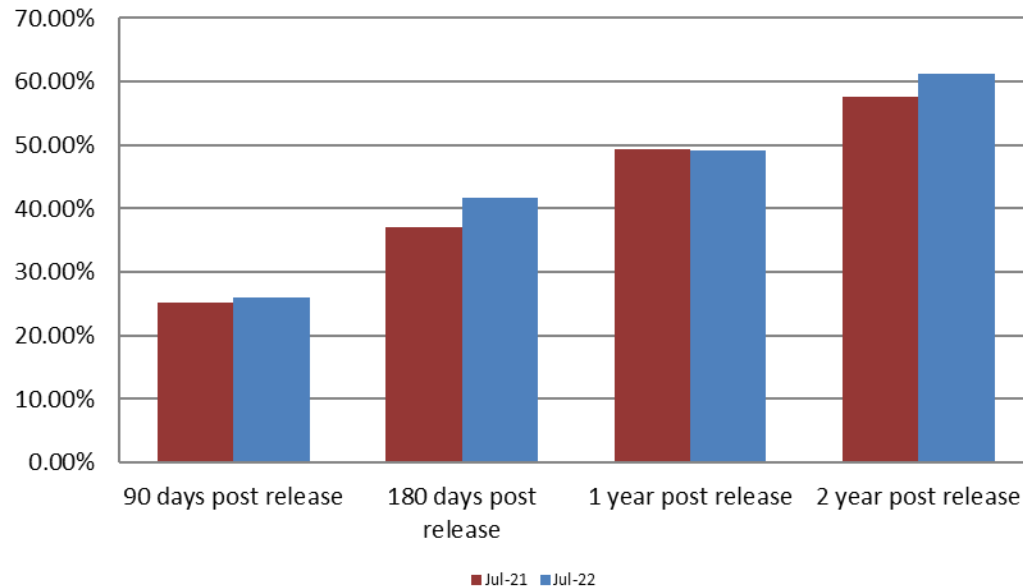
## Booking Admits & Total Monthly ADP (Jail): July 2020 - present



Jail includes individuals in booking, detention, work release and out-of county (combined)  
(data obtained from detention facility)



## Percent of Released Inmates Rearrested July

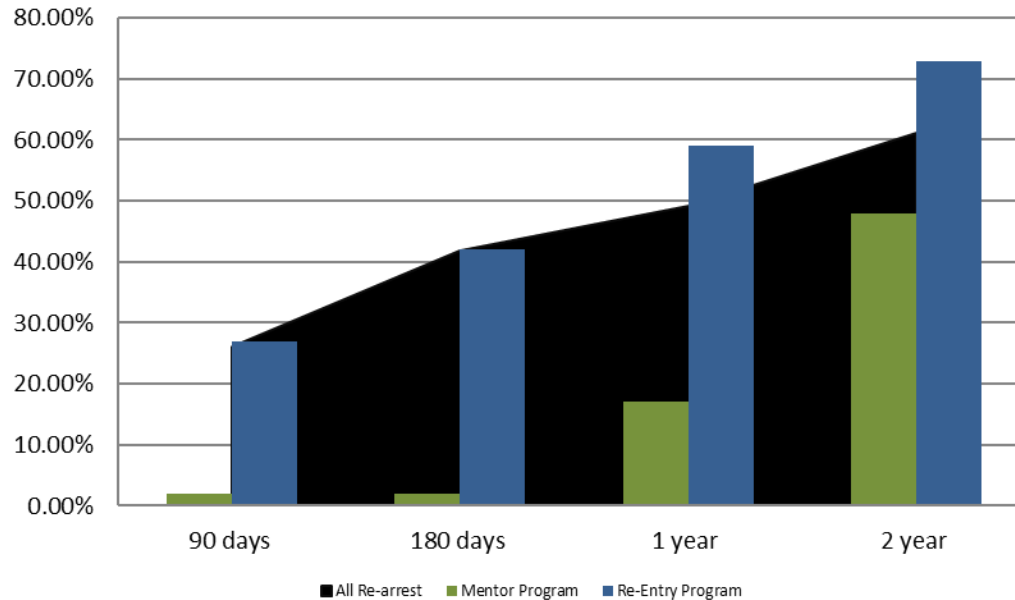


Month Year	90 Days	180 Days	1 Year	2 Years
July 2021	25.14%	37.10%	49.42%	57.59%
July 2022	26.04%	41.75%	49.10%	61.16%





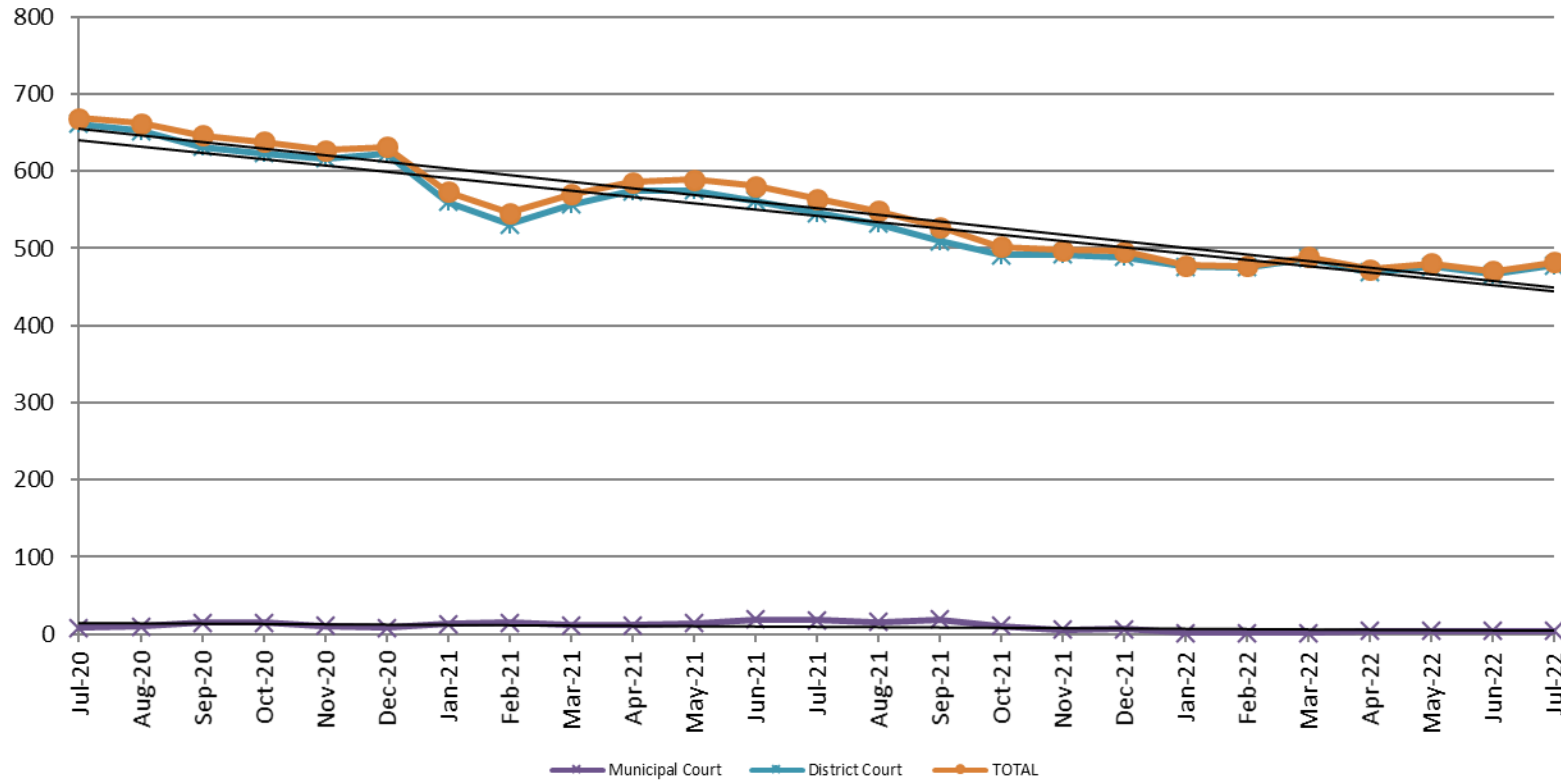
## Recidivism by Programs July 2022



July 2022	90 Days	180 Days	1 year	2 years
All Re-arrests	26.04%	41.75%	49.10%	61.16%
Mentor Program	2%	2%	17%	48%
Re-Entry Program	27%	42%	59%	73%



## Pretrial Services Program (PSP) Monthly ADP: July 2020 - present

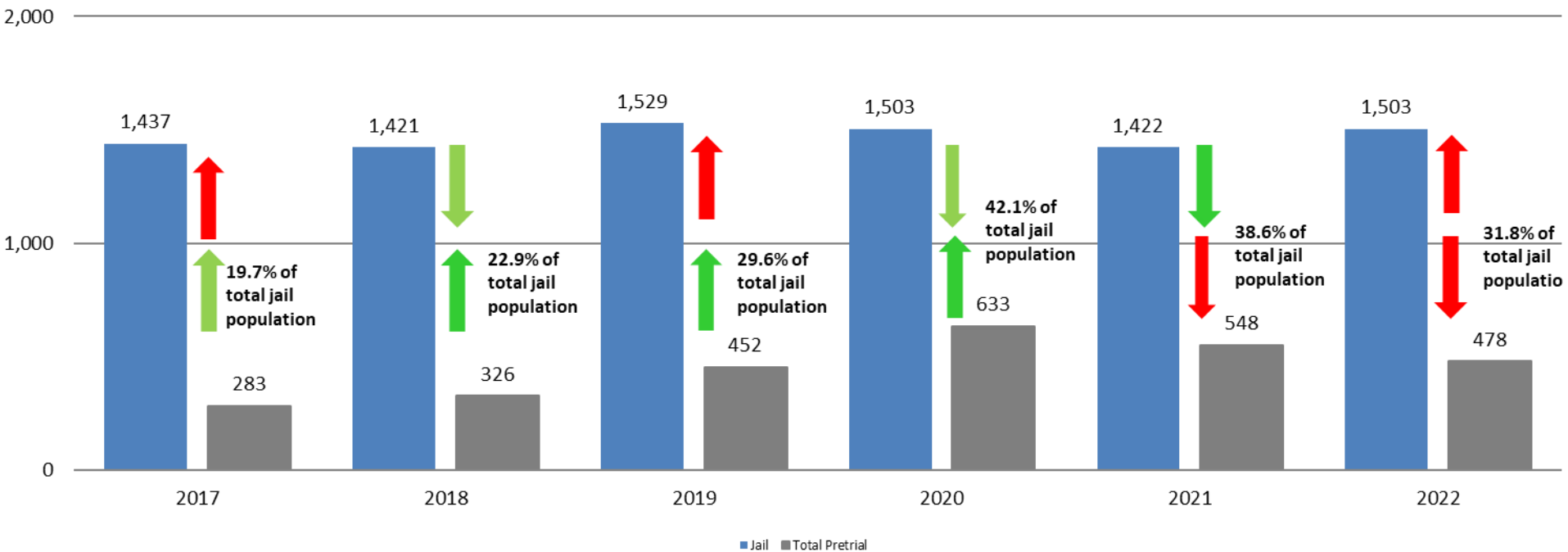


July	2020 ADP	2021 ADP	2022 ADP	2020 YTD Avg.	2021 YTD Avg.	2022 YTD Avg.
Muni. Court	8	18	4	4	14.7	3.1
Dist. Court	661	546	478	622	557.9	475.3
Total	669	564	482	627	572.7	478.4



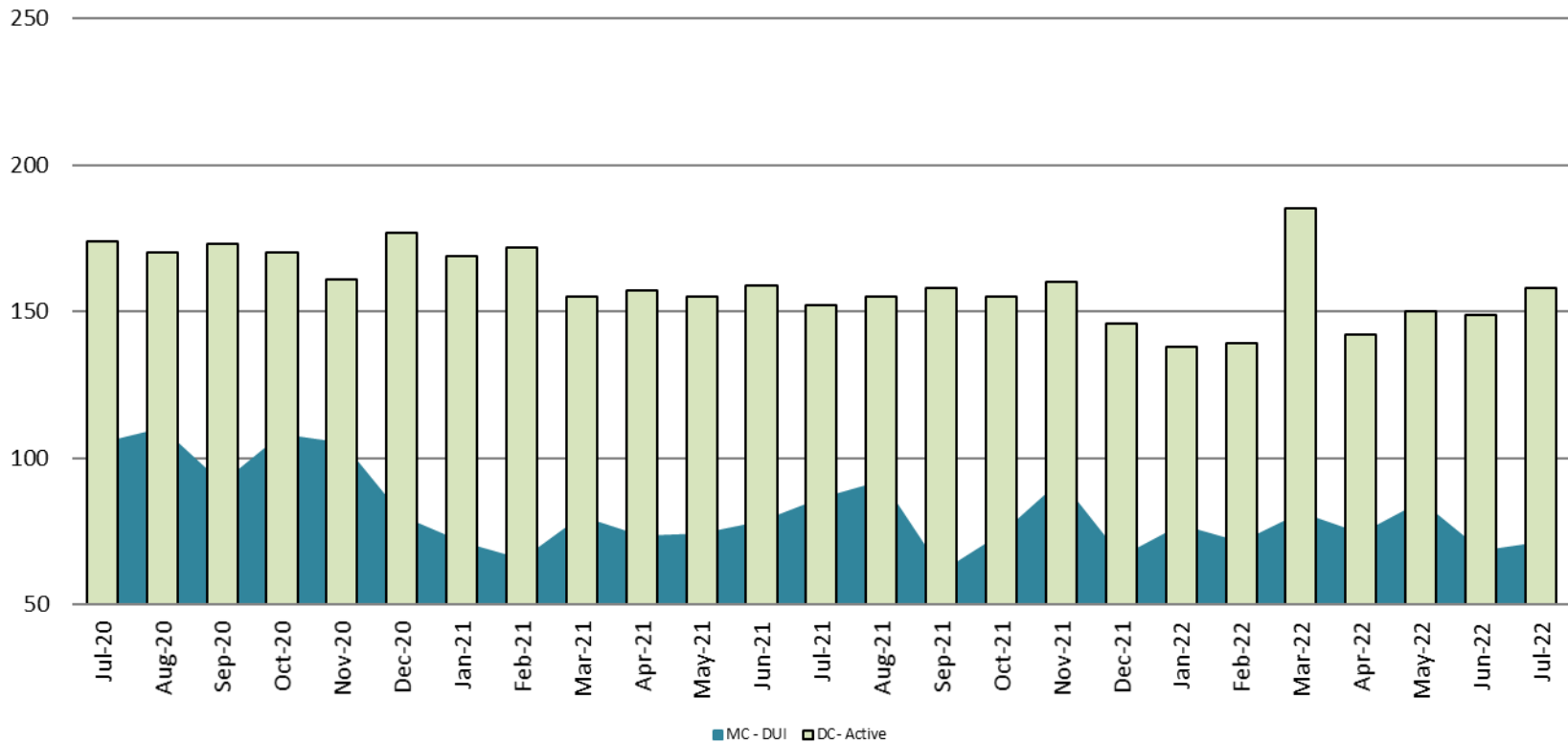
# Correlation: Total & PSP

## Total Annual ADP: 2017 - present



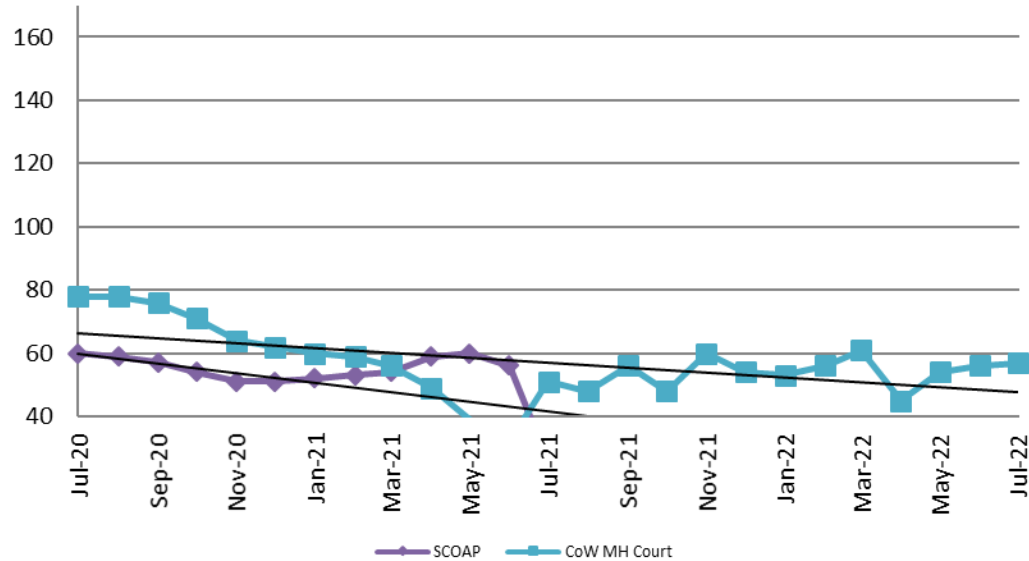
## Diversion - Active Caseload

July 2020 - present

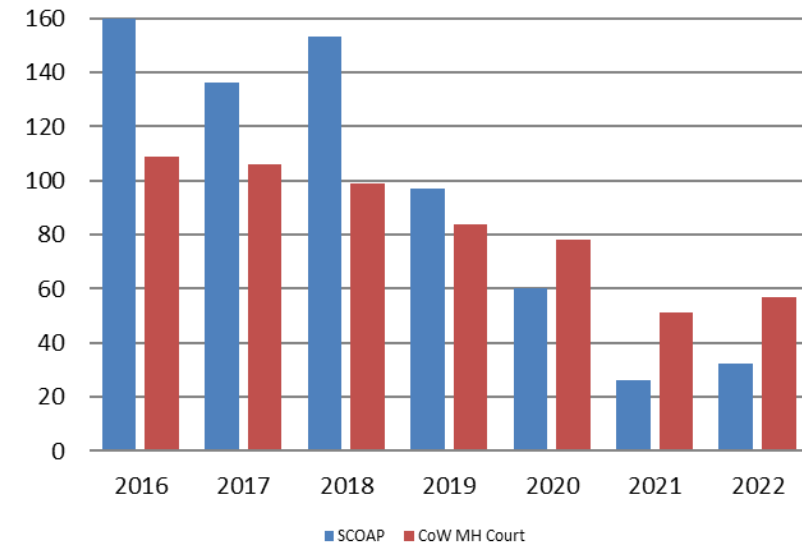


July	2020	2021	2022	2020 YTD Avg.	2021 YTD Avg.	2022 YTD Avg.
Muni. Court- DUI	105	86	71	92	75	75
Dist. Court- Active	174	152	158	180	160	152

## Mental Health - ADP July 2020 - present

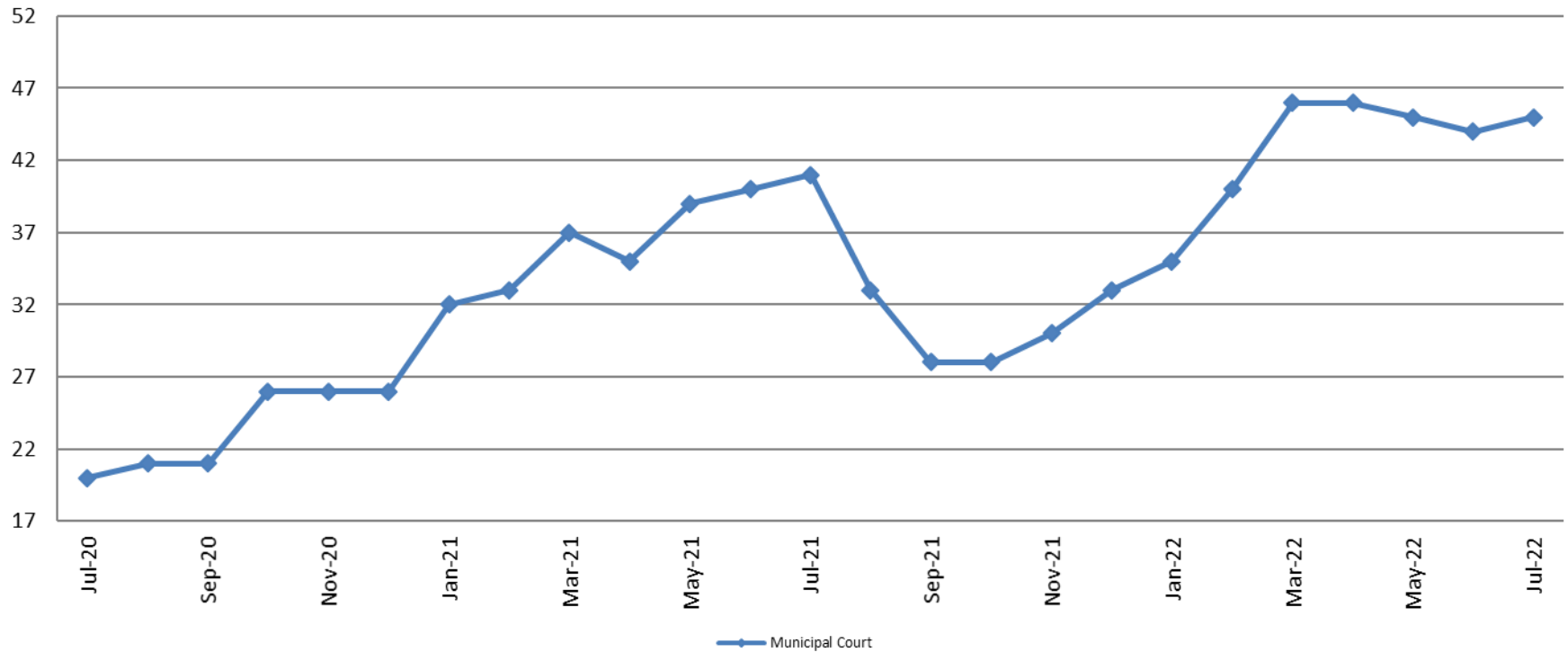


## Mental Health ADP Year over Year - July



July	2020 ADP	2021 ADP	2022 ADP	2020 YTD Avg.	2021 YTD Avg.	2022 YTD Avg.
SCOAP	60	26	32	67	51	31
MH Court	78	51	57	76	49	55

## Day Reporting - Active Caseload July 2020 - present



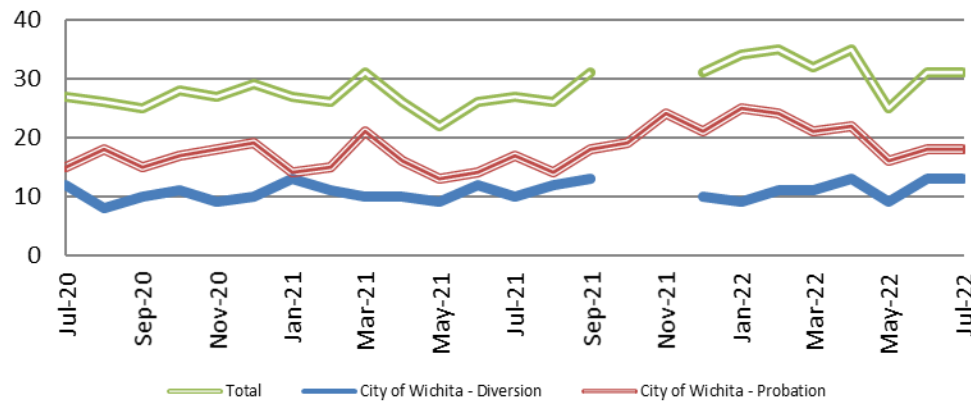
July	2017	2018	2019	2020	2021	2022
Muni. Court	45	28	27	20	41	45
Muni. Court YTD Avg.	35	35	30	21	37	43



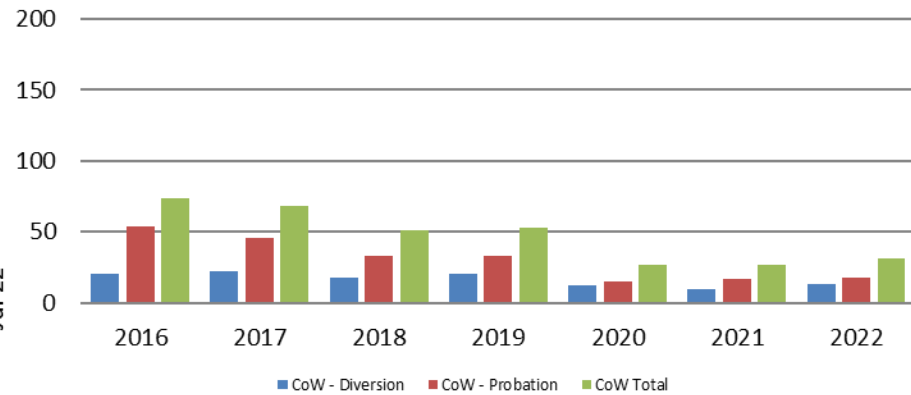
*Sedgwick County...*  
*working for you*

\*District Court funding ended on 6/30/2016  
(data obtained from DRC)

## Drug Court - City of Wichita ADP: July 2020 - present



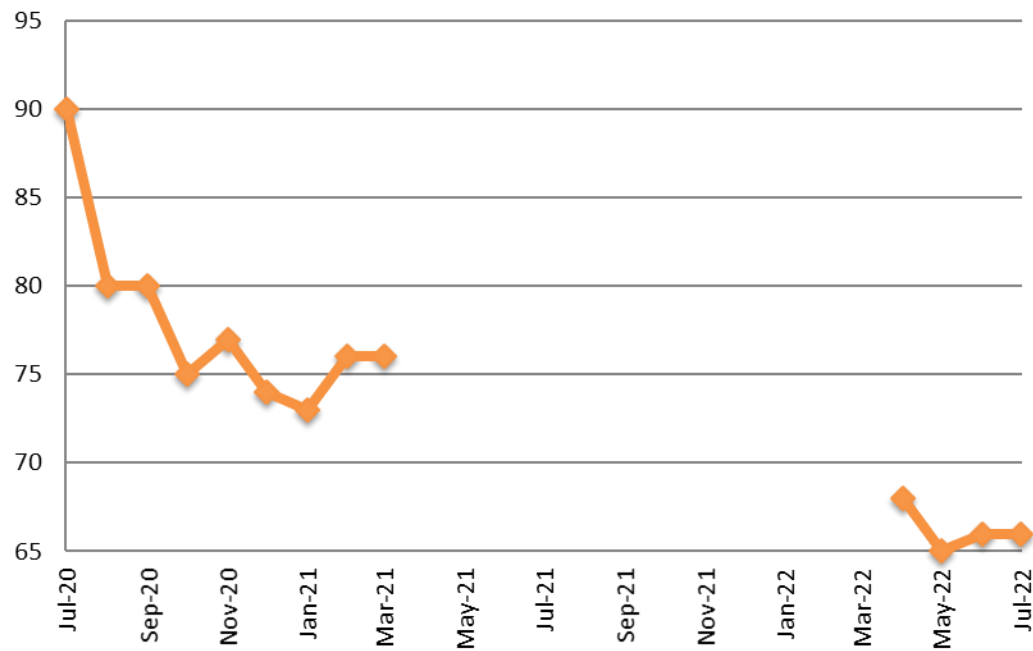
## Drug Court- City of Wichita Year over Year - July



July	2020	2021	2022
Diversion	12	10	13
Probation	15	17	18
Total	27	27	31



## Drug Court - Sedgwick County ADP: July 2020 - present



July	2020	2021	2022
Sedg. Co. ADP	90	N/A	66
YTD Avg.	96	N/A	66



*Sedgwick County...*  
*working for you*

\*In 2021, KDOC changed databases and reports were not available 16

(data obtained from Pretrial Services)



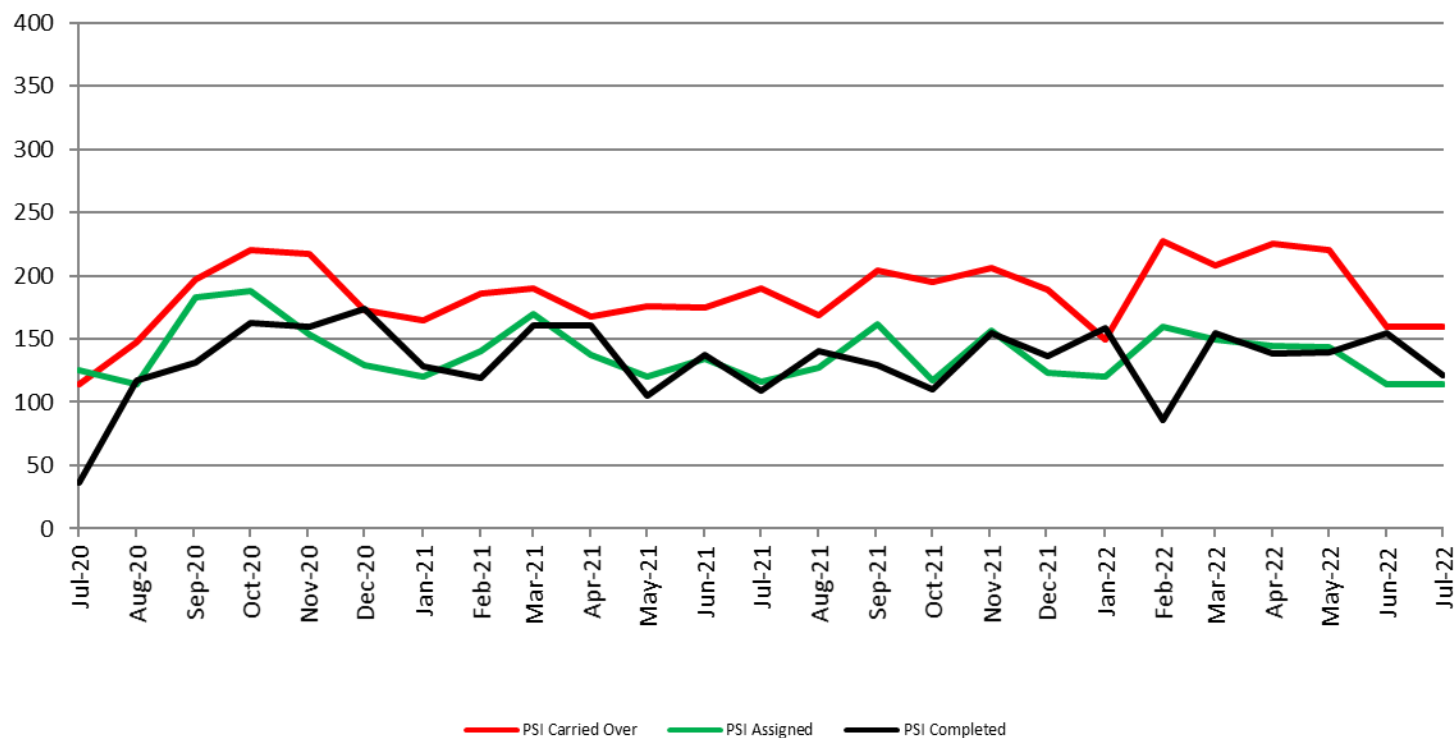
## Probation - Active Caseloads July 2020 - present



July	2020	2021	2022	2020 YTD Avg.	2021 YTD Avg.	2022 YTD Avg.
Dist. Court Probation	1,580	1,700	1,691	1,637	1,674	1,688
Muni. Court Probation	797	1,211	1,114	937	1,069	1,019



## District Court Probation: Pre-Sentence Investigation July 2020 - present

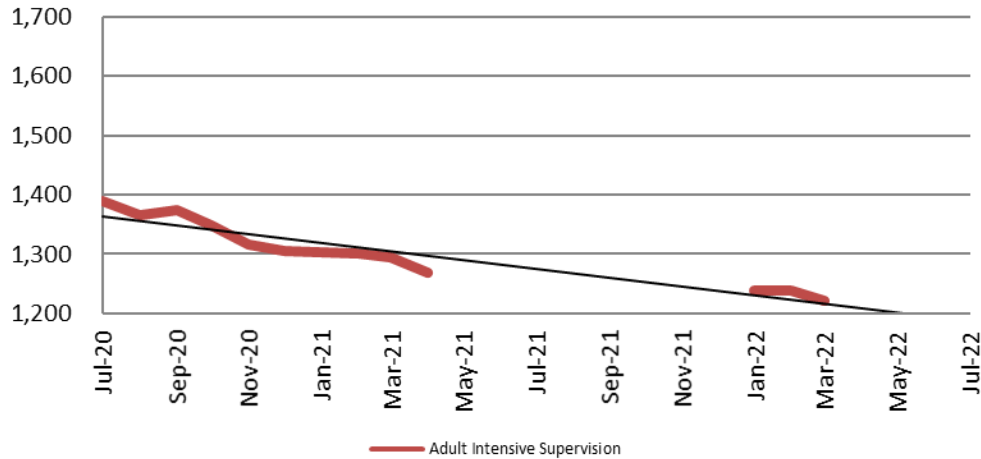


July	2020	2021	2022
Carried Over	114	190	160
Assigned	125	116	114
Completed	36	109	121



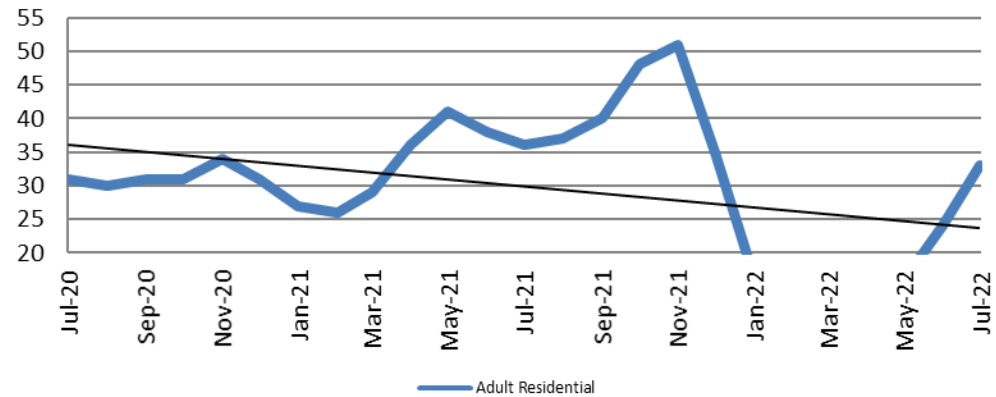
# Community Corrections

**Adult Intensive Supervision Probation (AISP):  
ADP July 2020 - present**



Year	July	July YTD Avg.
2020	1,390	1,489
2021	N/A	N/A
2022	N/A	1,233

**Adult Residential: ADP  
July 2020 - present**



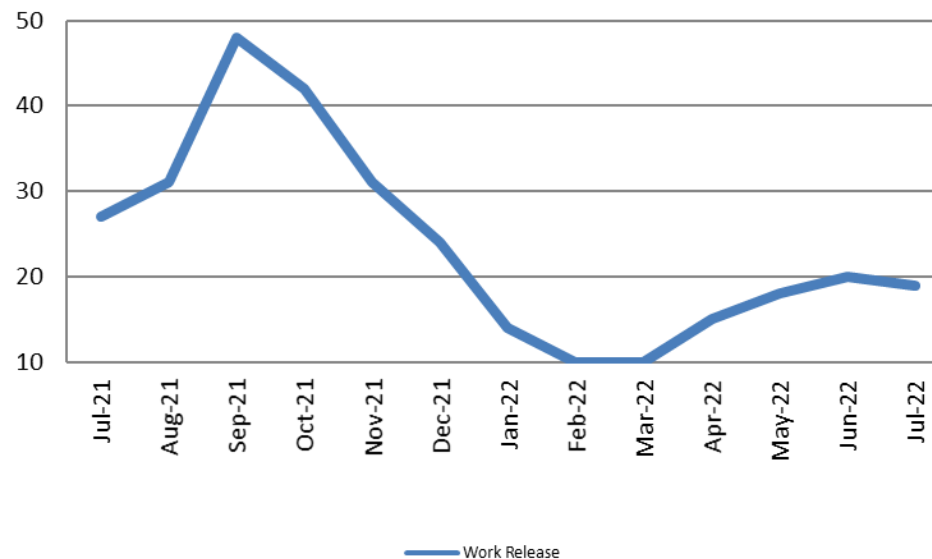
Year	July	July YTD Avg.
2020	31	40
2021	36	33
2022	33	16



*Sedgwick County...*  
*working for you*

# Community Corrections

## Work Release: ADP July 2021 - present

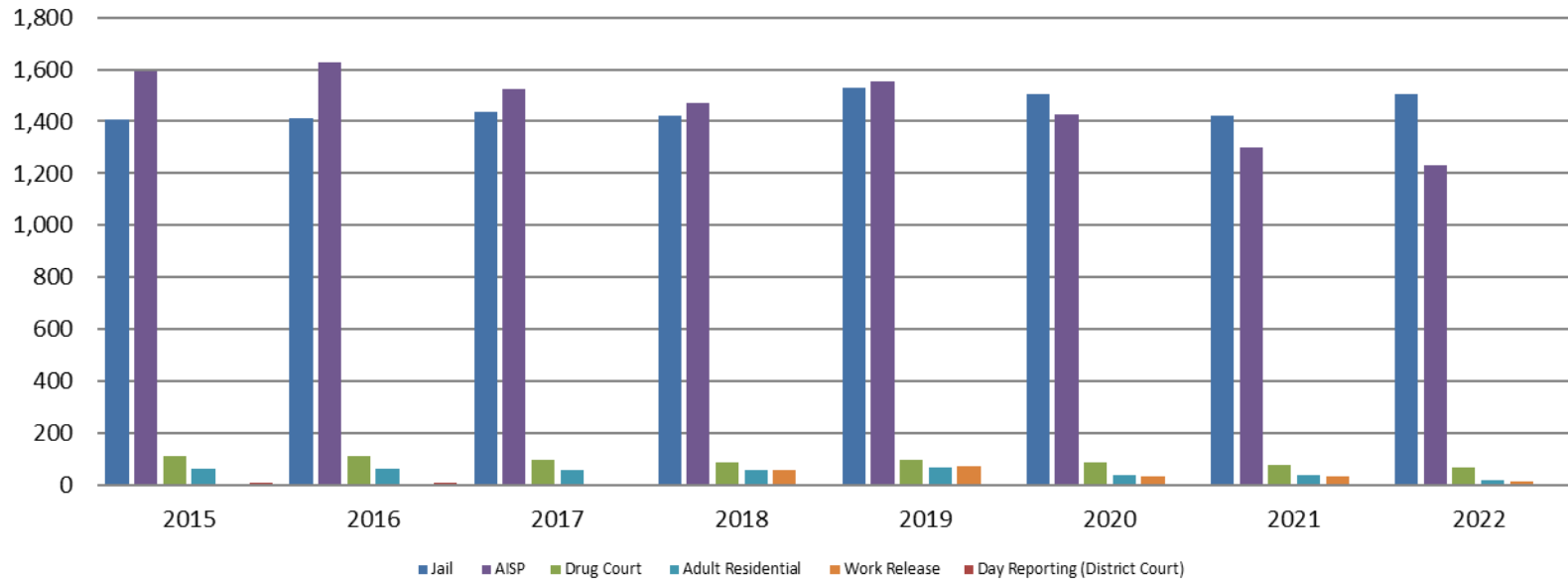


Month Year	Total	YTD Avg.
July 2021	27	27
July 2022	19	15



# Correlation: Total & Sedgwick County Programs (Adult)

**Total Annual ADP 2015 - present**



	2020	2021	2022
Jail	1,503	1,422	1,503
AISP	1,428	1,300	1,233
Drug Court	88	75	66
Adult Residential	36	37	16
Work Release	30	30	15
Day Reporting (DC)	0	0	0

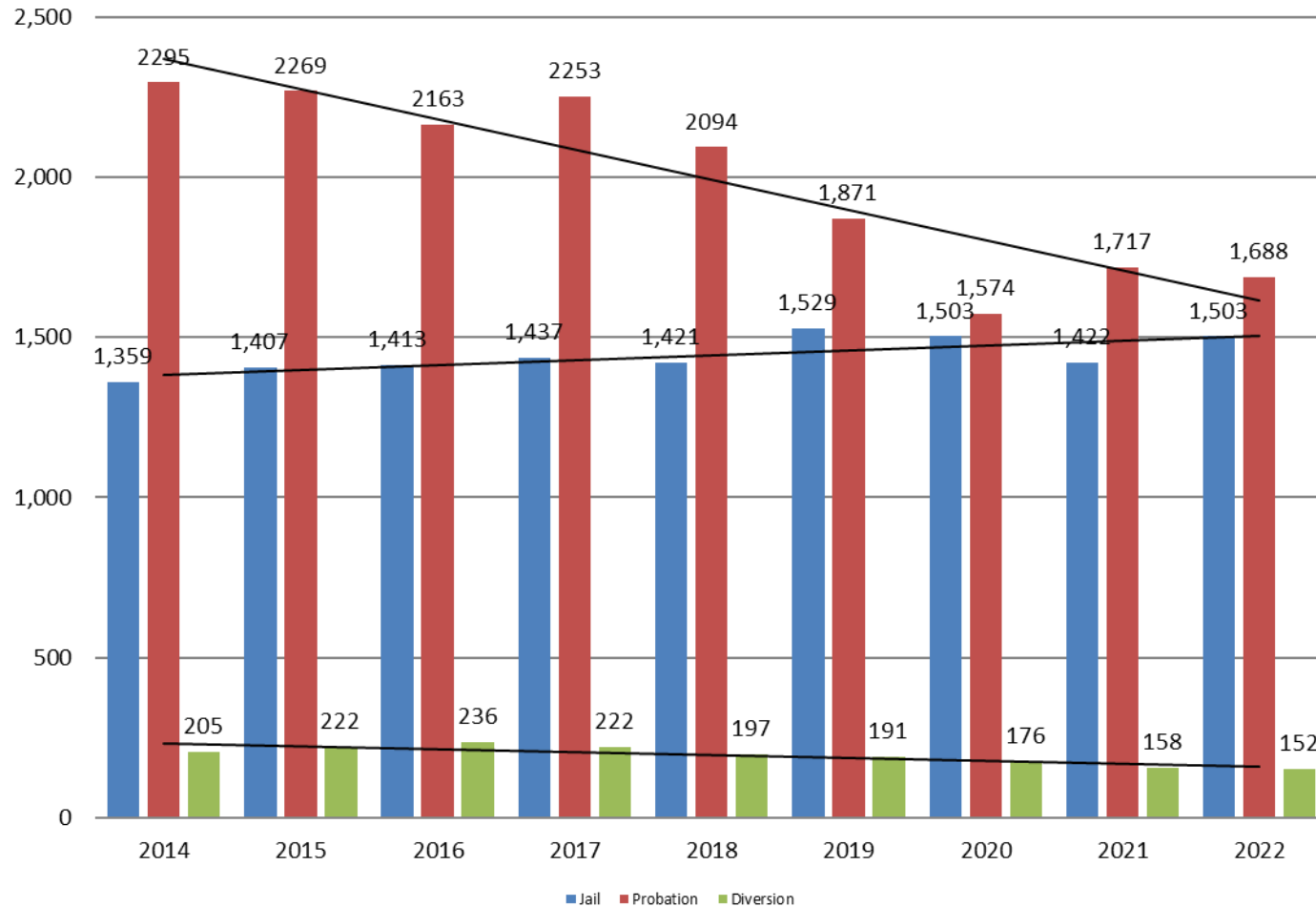


*Sedgwick County...*  
*working for you*

Jail includes individuals in booking, detention, work release and out-of county (combined)  
(data obtained from detention facility, SG Dept. of Corrections, Pretrial Services, & CoW)

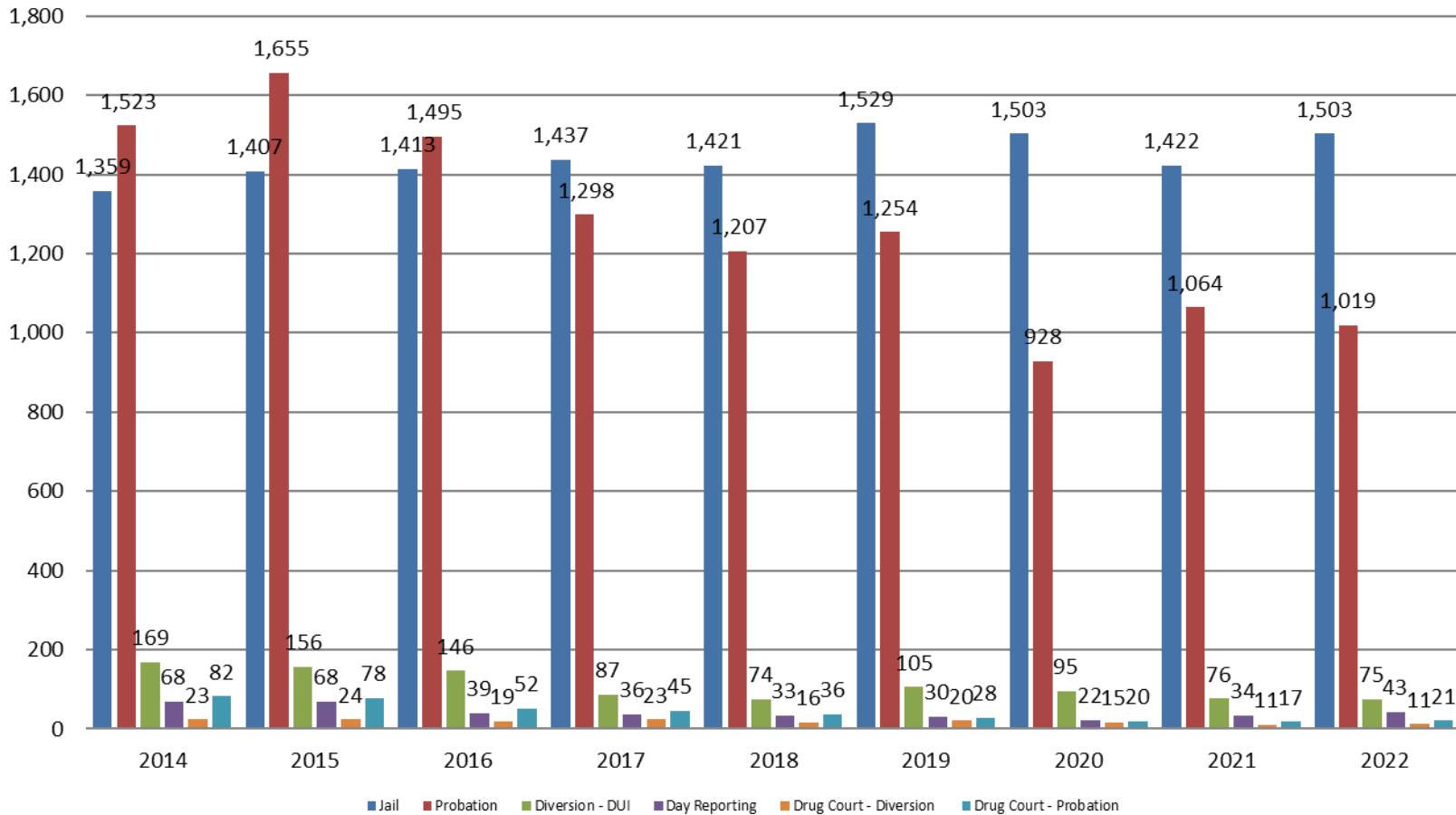
# Correlation: Total & District Court Programs

**Total Annual ADP: 2014 - present**



# Correlation: Total & City of Wichita / Municipal Court Programs

**Total Annual ADP: 2014 - present**

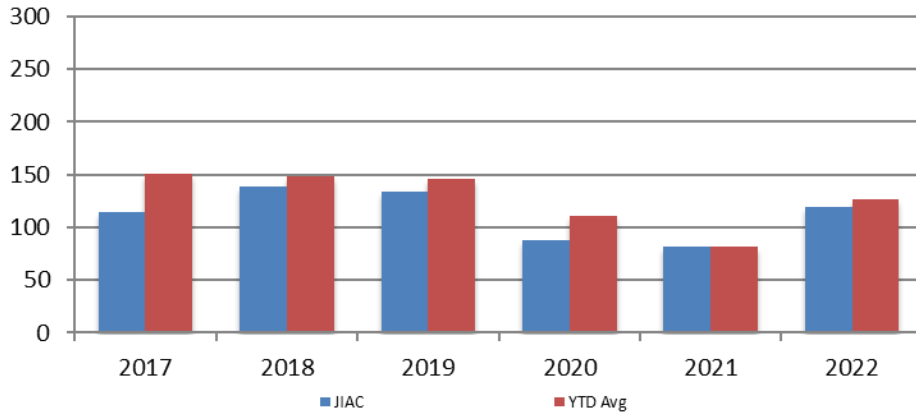


*Sedgwick County...*  
*working for you*

Jail includes individuals in booking, detention, work release and out-of county (combined)  
(data obtained from detention facility, CoW, & Pretrial Services)

# Juvenile

**JIAC Intakes**  
July 2017 - present

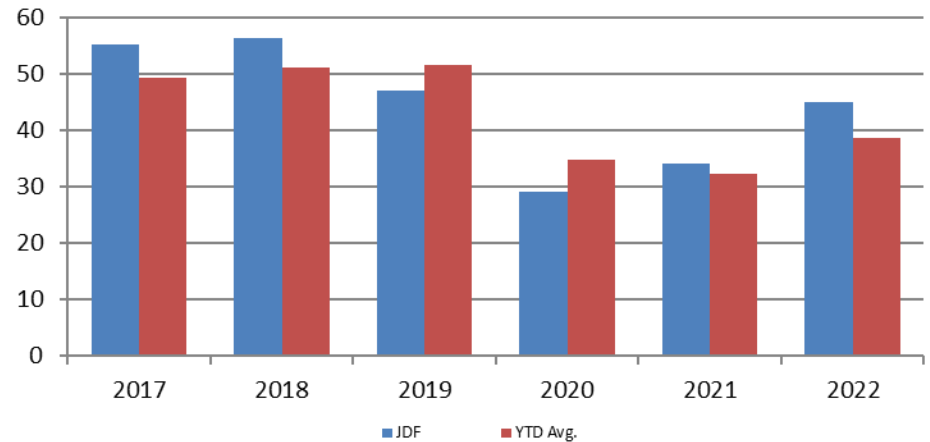


Year	July	July YTD Avg.
2017	115	151
2018	139	148
2019	134	145
2020	88	111
2021	82	82
2022	119	127

**Year**      **July**      **July YTD Avg.**

2017	55	49
2018	56	51
2019	47	51
2020	29	35
2021	34	32
2022	45	39

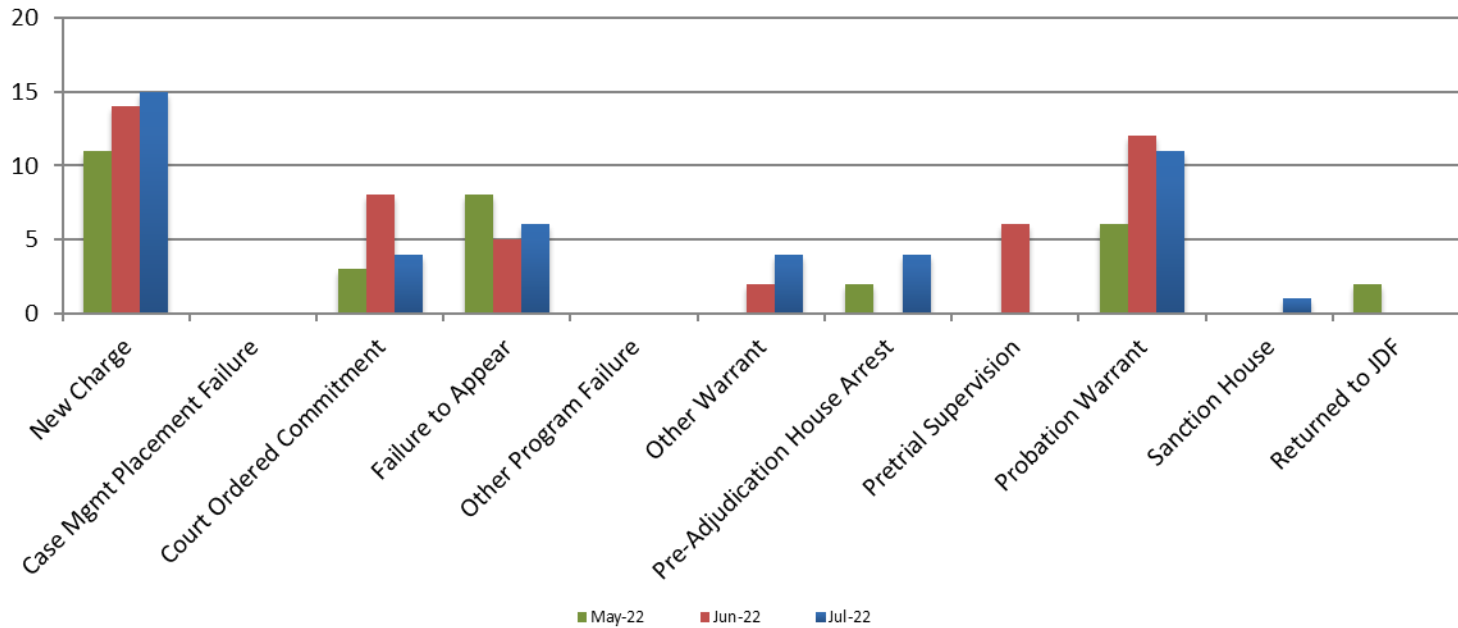
**JDF ADP**  
July 2017 - present



*Sedgwick County...*  
*working for you*



# Reason for JDF Admits



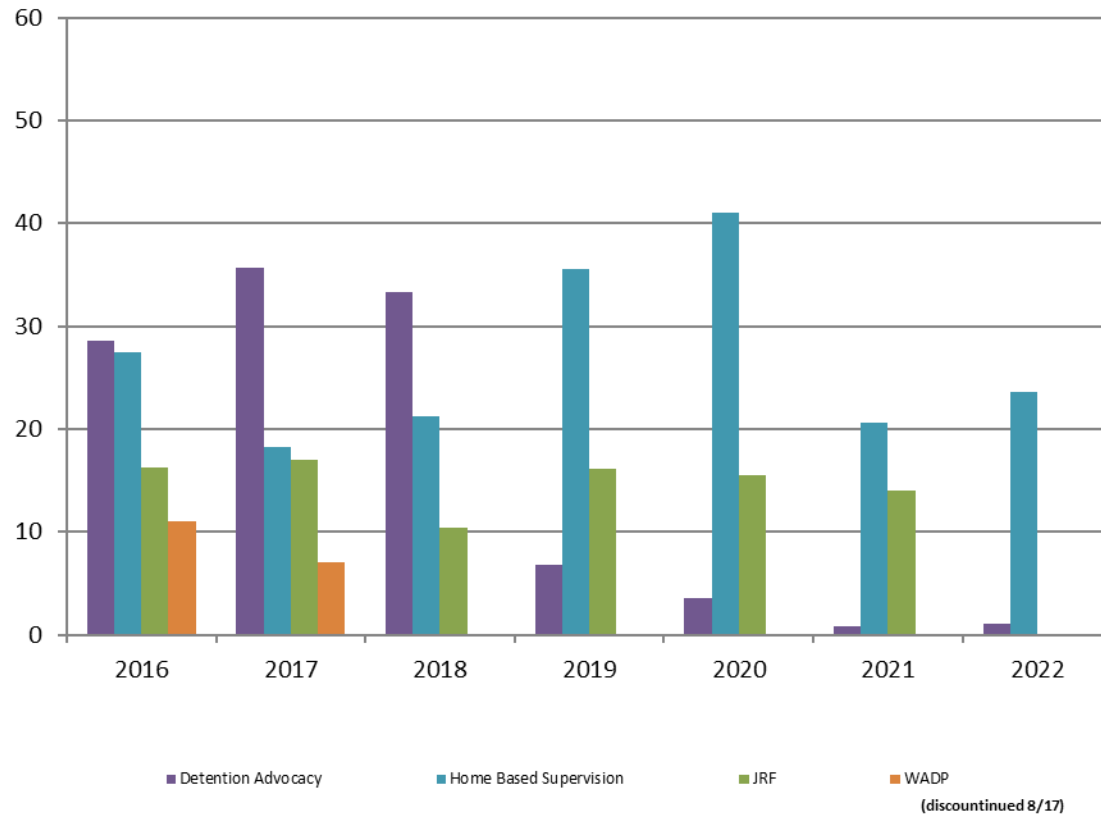
## Reason for JDF Admits

Reason	July 2021	July 2022
New Charges	10	15
Case Management Placement Failures	0	0
Court Ordered Commitment	11	4
Failure to Appear	4	6
Other Program Failure	4	0
Other Warrant	1	4
Pre-Adjudication House Arrest	1	4
Pretrial Supervision	0	0
Probation Warrant	3	11
Sanction House	0	1
Returned to JDF	N/A	0



# Juvenile Detention Alternatives

ADP: July 2016 - present



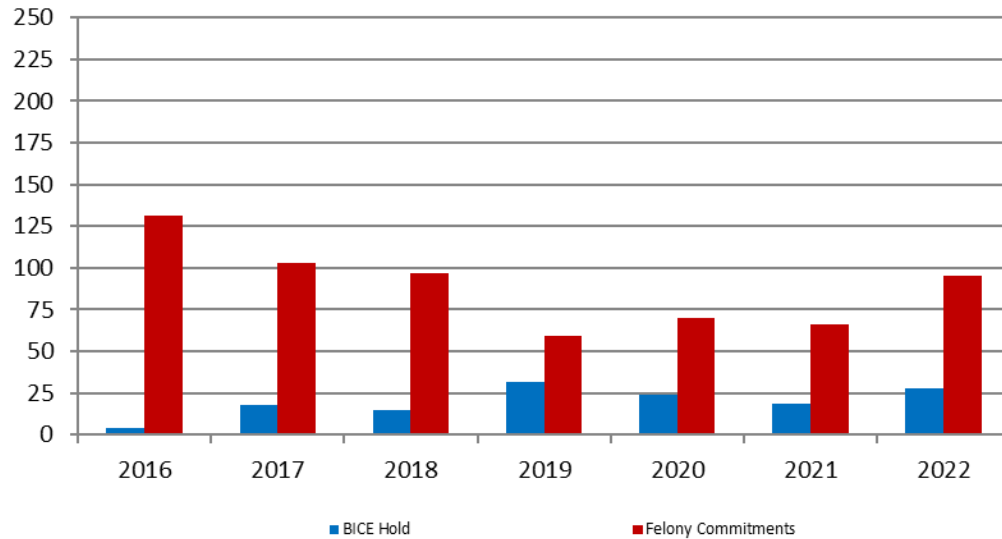
# Juvenile Detention Services

<b>July ADP</b>	<b>2019</b>	<b>2020</b>	<b>2021</b>	<b>2022</b>
Juvenile Detention Facility	47	28	34	45
Juvenile Residential Facility	16	16	14	0
Home Based Supervision	36	41	21	24
Detention Advocacy Case Management Services	7	4	1	1
Weekend Alternative Detention Program (total)	N/A	N/A	N/A	N/A

<b>July YTD AVERAGE</b>	<b>2019</b>	<b>2020</b>	<b>2021</b>	<b>2022</b>
Juvenile Detention Facility	51	35	32	39
Juvenile Residential Facility	14	17	11	4
Home Based Supervision	28	29	23	19
Detention Advocacy Case Management Services	24	12	4	1
Weekend Alternative Detention Program	N/A	N/A	N/A	N/A

# Monthly Jail Snapshot: July

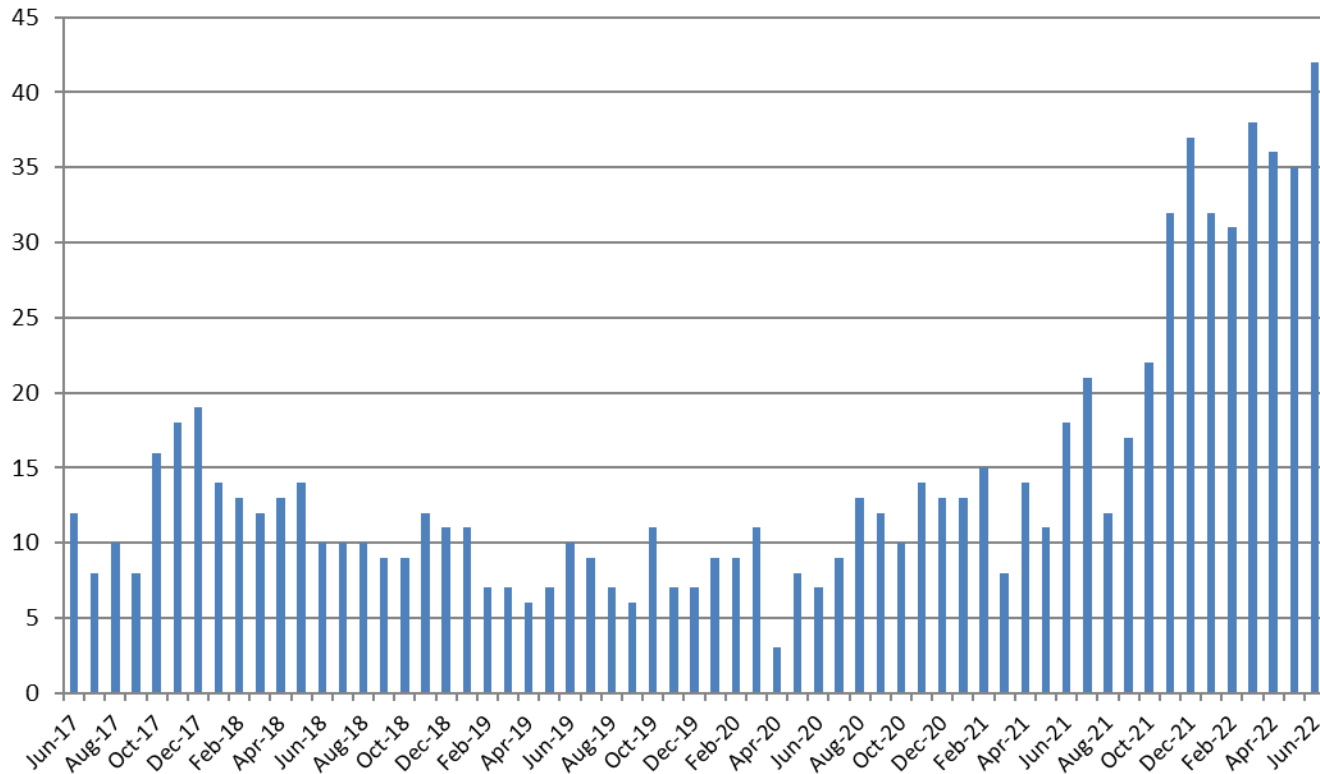
Snapshots July 2016 - present



BICE Hold	2016	2017	2018	2019	2020	2021	2022
July	4	18	15	32	24	19	28
Felony Commitments	2016	2017	2018	2019	2020	2021	2022
July	131	103	97	59	70	66	95



## Journal Entry Completion (Average Days) June 2016 - present



June	2017	2018	2019	2020	2021	2022
Avg. Days	12	10	10	7	18	42
YTD Avg.	9	12.6	8	8	13	35.6

