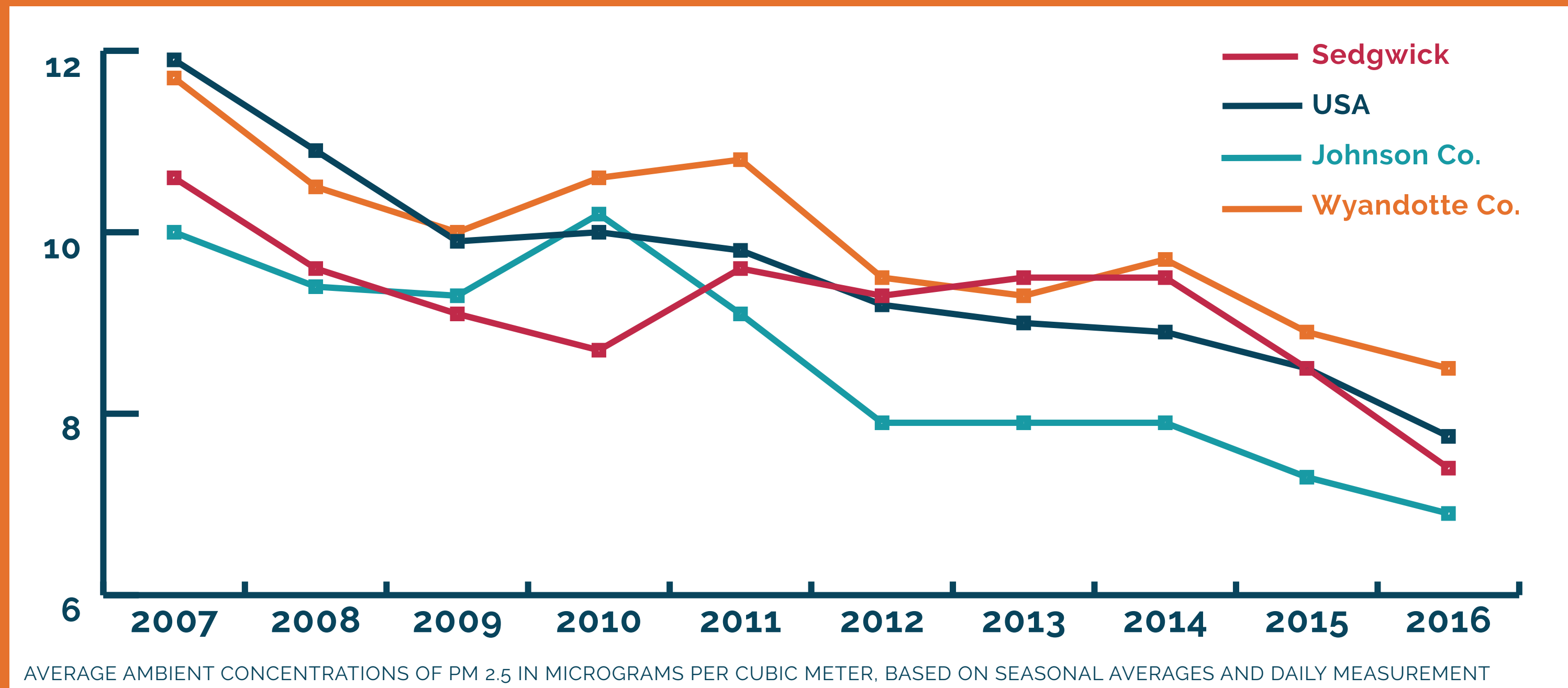


# SEDGWICK COUNTY VS OTHER COUNTIES & U.S.

## AIR POLLUTION - QUANTITIES OF PM 2.5



SOURCE: KDHE & EPA

# ENVIRONMENT



## RELATIONSHIP MATRIX

### ENVIRONMENTAL FACTORS

STEMS FROM LEADS TO  
BOTH STEMS FROM AND LEADS TO

BIRTH OUTCOMES	EDUCATION	MENTAL HEALTH
UNINTENTIONAL INJURY	POVERTY	HOUSING
SUBSTANCE MISUSE	FAMILY PLANNING AND STIs	OBESITY & DIABETES
FOOD ENVIRONMENT	ENVIRONMENTAL HEALTH	VIOLENCE & CRIME

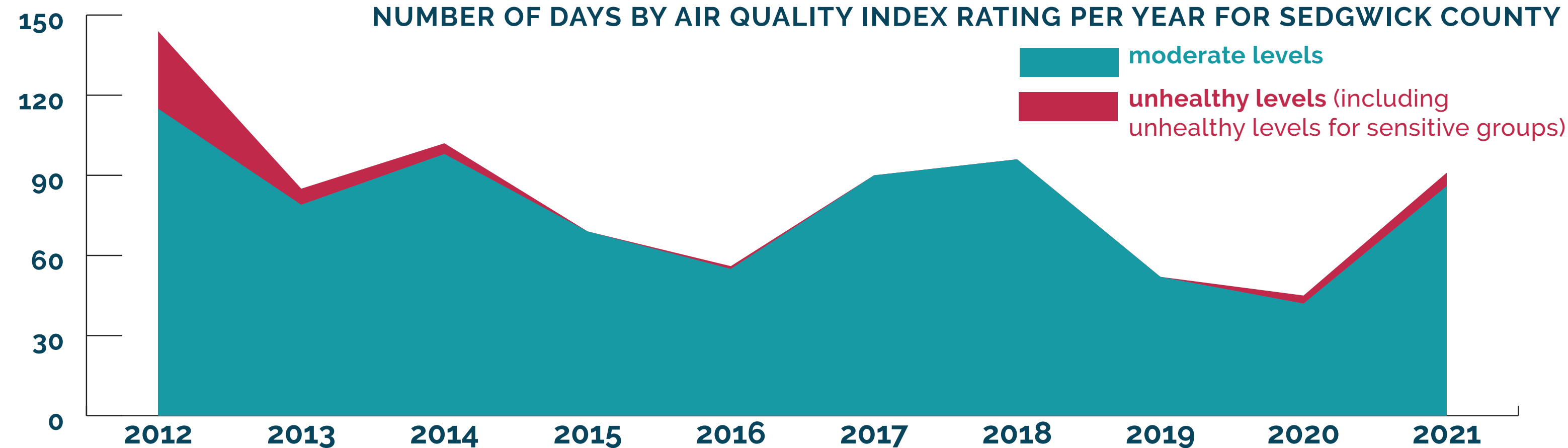
## COMMUNITY VOICES

Excerpt from the Community Listening Session

Environmental toxins are a problem. Many neighborhoods live by highways and are exposed to the lead-filled fumes from semis.

## POOR AIR QUALITY DAYS: AIR QUALITY INDEX

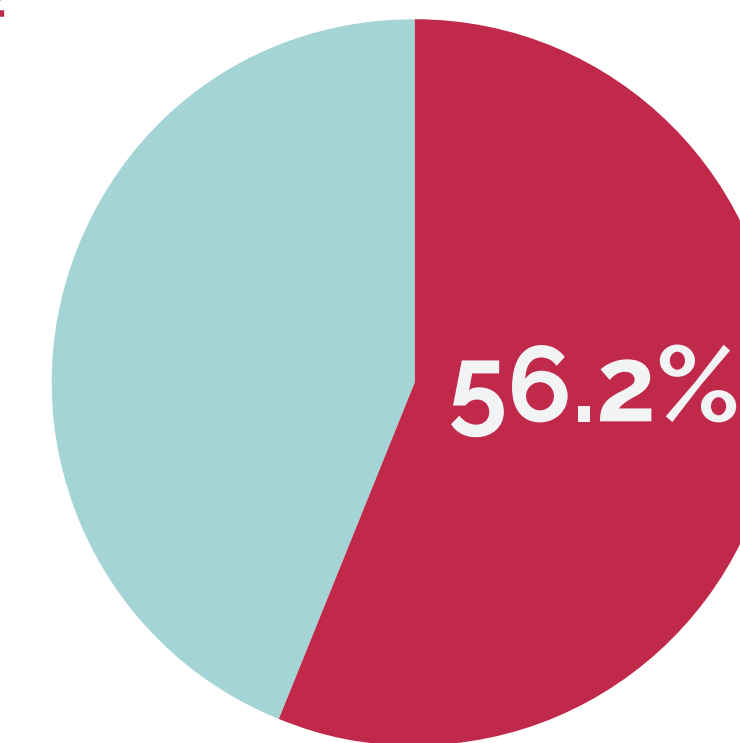
NUMBER OF DAYS BY AIR QUALITY INDEX RATING PER YEAR FOR SEDGWICK COUNTY



SOURCE: U.S. ENVIRONMENTAL PROTECTION AGENCY, AIR QUALITY INDEX REPORT

## LEAD PAINT CONCERNS

MORE THAN HALF THE HOMES IN SEDGWICK COUNTY WERE BUILT BEFORE 1980 AND HAVE THE POTENTIAL FOR LEAD PAINT



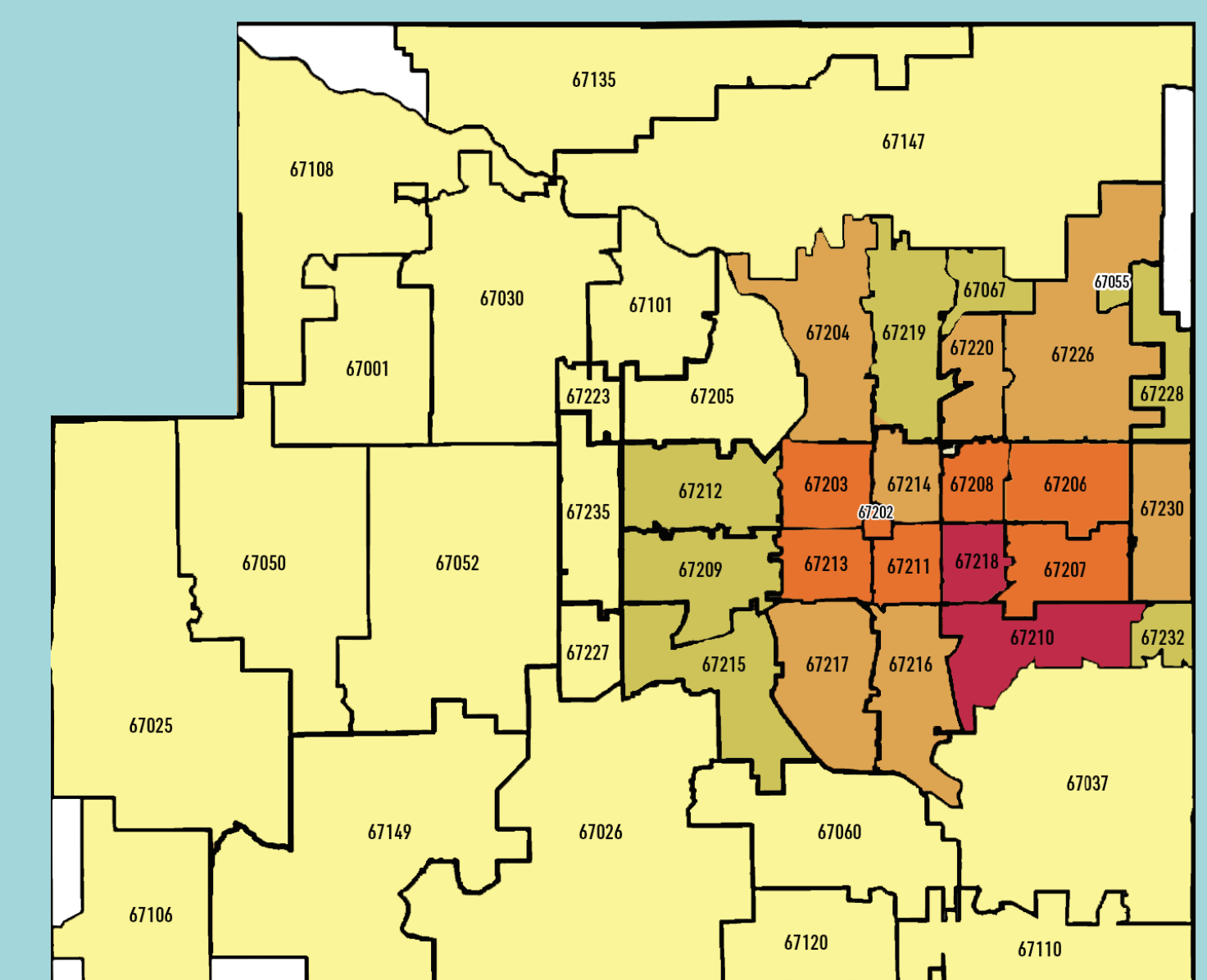
SOURCE: US CENSUS BUREAU ACS 2016-2020, POPULATION: SEDGWICK COUNTY

## ZIP CODE

### AIR QUALITY - LIFETIME CANCER RISK

Rate per 1,000,000 residents:

35.9 in 67218, 35.6 in 67210  
33.9 in 67207, 67210, 33.6 in 67213, 33.4 in 67206



>34  
32 - 34  
30 - 32  
28 - 30  
<28

SOURCE: EPA NATA 2014

## CLEAN-UP SITES

Throughout Sedgwick County, there are about

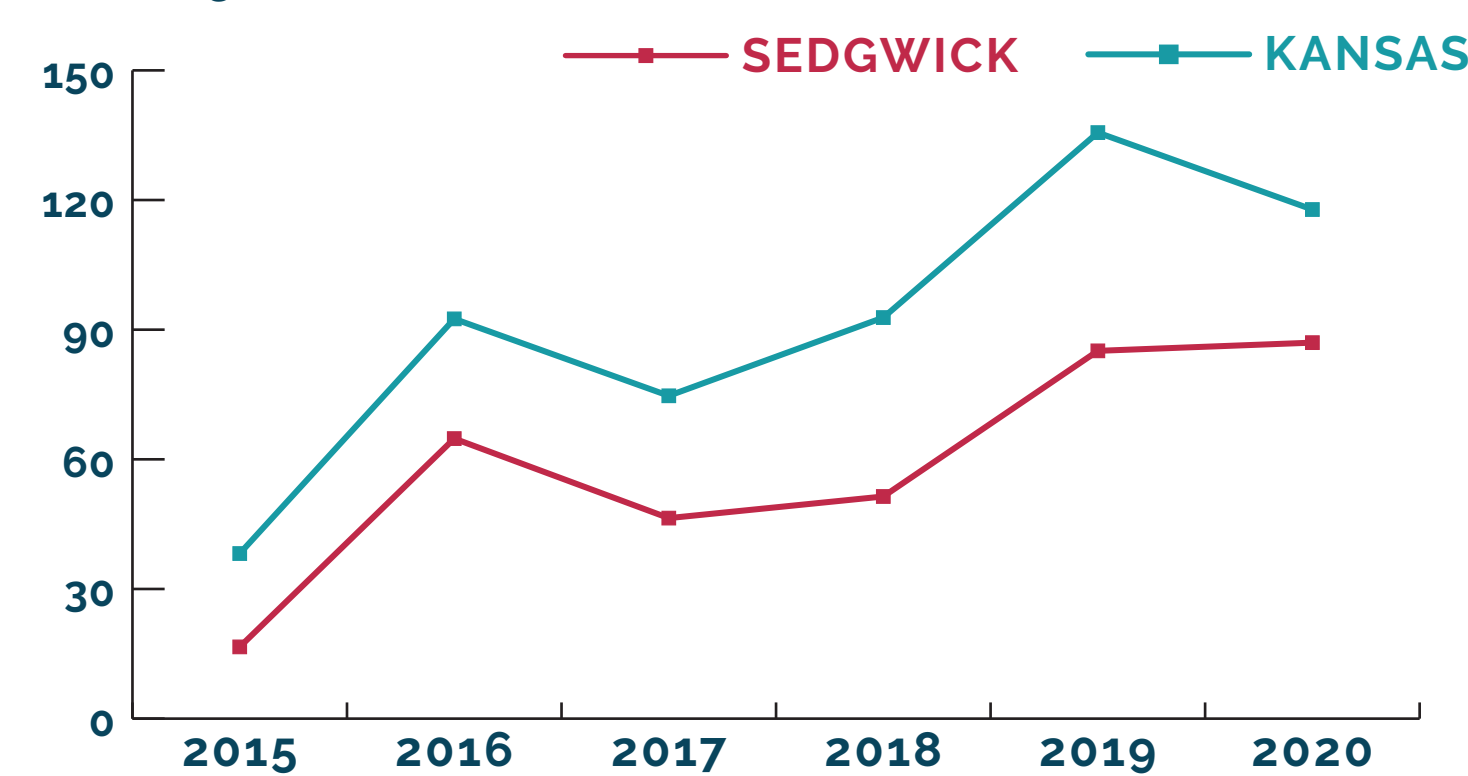
# 235

active environmental remediation sites  
This includes city, state & federal sites

SOURCE: KDHE, EPA, WICHITA PUBLIC WORKS & UTILITIES  
Community Health Improvement Plan - October 2022

## CHILDREN LEAD LEVELS

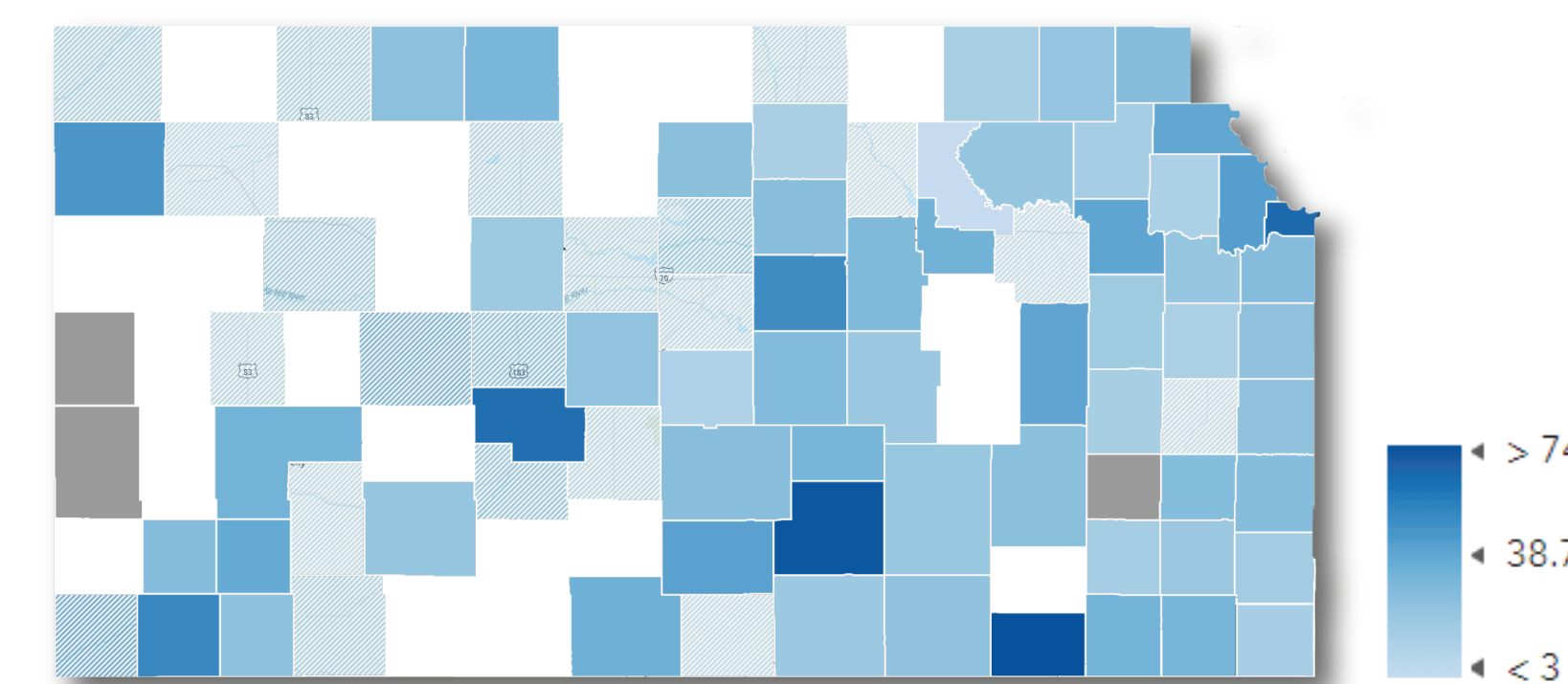
Rate of children with elevated blood lead levels per 100,000 children under the age of 16. Not all children are tested for lead.



SOURCE: KDHE

## ASTHMA CONCERNS

Sedgwick County has the 2nd highest rate in Kansas of ER visits for asthma per 10,000 population, behind only Chatauqua Co.



SOURCE: KDHE