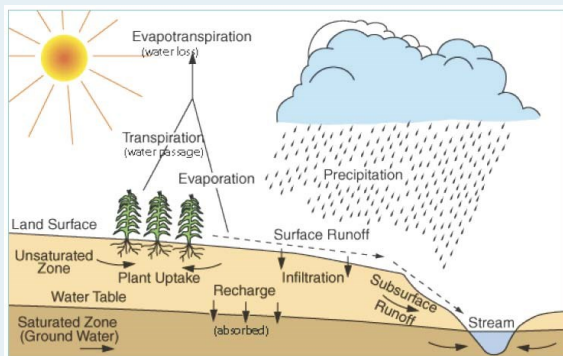


Where Does Our Water Come From?

Precipitation (rain and snow) is the primary source of water for recharging groundwater. Groundwater provides water to creeks and rivers like the Arkansas, Little Arkansas, and the Ninnescah and the Cheney Reservoir all of which are surface waters. The Reservoir provides at least 50% of the surface water available for public use. The State determines the amount of surface and groundwater that can be used (appropriated) without impacting flows in the rivers. The amount of surface water available annually from the Little Arkansas, Ninnescah, and the Cheney Reservoir is approximately 572,000 acre-feet. An acre-foot is one foot deep water over one acre of area.



Stormwater Management

Sedgwick County is 1,009 square miles in size with a population of close to 500,000 people. The County crosses eight watersheds within the Lower Arkansas and Walnut River Basins with the most notable rivers being the Arkansas and Little Arkansas Rivers. Drainage throughout the County is by way of the Arkansas River and its tributaries including Big Slough, Cowskin Creek, and the Ninnescah.

Specific goals of Sedgwick County's Stormwater Management Program include:

- Minimize threats to life, property, and infrastructure from flooding.
- Make investments to avoid future taxpayer liability.
- Build public support for actions, activities, and behaviors that lead to the protection of water resources.
- Enhance quality of life for citizens throughout Sedgwick County.
- Protect environmental quality.

Stormwater Management

Scott C. Lindebak, Stormwater Engineer
Sedgwick County Public Works
1144 S. Seneca
Wichita, KS 67213

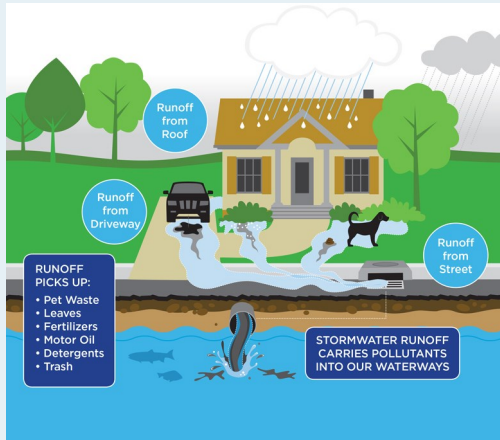
Phone: 316-660-1754
E-mail: Scott.Lindebak@Sedgwick.gov

Preventing Household Stormwater Pollution

How activities at home can pollute stormwater, and what we can do to maintain healthy waterways in Sedgwick County and beyond.



*Sedgwick County...
working for you*



What is Stormwater?

Water following a rain or snow storm that does not infiltrate the surface is referred to as stormwater. A storm drain is infrastructure designed to drain excess rain and ground water from impervious surfaces such as paved streets, car parks, parking lots, footpaths, sidewalks, and roofs. Many storm drainage systems are gravity sewers that drain untreated storm water into rivers or streams—so it is unacceptable to pour hazardous substances into the drains. Storm drains are separate and distinct from sanitary sewer systems which route sewage through a water treatment plant. Read more about stormwater by visiting SedgwickCounty.org/public-works/stormwater-management.

How Household Pollutants Enter Stormwater Systems

The majority of all water quality pollution does not come from the end of a pipe, but from our very own backyards. When it rains, water that isn't absorbed by the ground flows across our yards and driveways, and drains into our stormwater system. This runoff inadvertently transports pollutants such as motor oil, pesticides, and other household chemicals directly into Kansas waterways via stormwater systems. These pollutants are known as 'Nonpoint Source Pollution' and are the leading cause of water pollution in the United States today. They are called nonpoint source pollutants because they originate not from a single defined source but many diffuse sources.

How to Dispose of Automotive Waste

Performing vehicle maintenance at home is a great way to save money, but be careful; motor oil, antifreeze, gasoline and other common fluids are major stormwater pollutants! Instead of letting these chemicals soak into the lawn or run into the stormwater drain, drop them off FREE OF CHARGE at Sedgwick County's Household Hazardous Waste (HHW) facility. For more info about the HHW facility, have a look at the next panel of this brochure.

Household Hazardous Waste Facility

The Household Hazardous Waste Facility is a safe place for residents of Sedgwick County to dispose of many types of chemicals and products in an environmentally responsible way. Keeping these toxins out of our water is so important, this program is offered for free to our residents.

Items Accepted For Drop Off Disposal

- Paint, aerosols, and household cleaners
- Pesticides, herbicides, and garden chemicals
- Gasoline, propane, antifreeze and used oil
- Batteries, fluorescent bulbs and old medications

Hours, Location and Contact Info

Household Hazardous Waste Drop-off Location

801 Stillwell
Wichita, KS 67213
South of Kellogg and Seneca, East on Stillwell to Osage

Telephone Contact

(316) 660-7458

Drop-Off Hours

9 a.m. to 5 p.m. Tuesday-Friday
9 a.m. to 3 p.m. Saturday
Closed Sundays and Mondays