

**ADDENDUM NO. 2**

**Sedgwick County Project: 801-DD-5280; Bridge on 151st Street West over the  
Ninnescah River (B485)**

**The items contained herein now become a part of the referenced plans and specifications. Please read the following items and acknowledge receipt of this addendum on the Proposal Page Number P-1. NOTE: THIS ADDENDUM MUST BE ACKNOWLEDGED TO CONSTITUTE A VALID BID.**

***PLANS:***

- Replace sheet 24 with sheet 24R (Limits of Geotextile Fabric revised)
- Replace sheet 28 with sheet 28R (Dimensions updated)
- Replace sheet 29 with sheet 29R (Dimensions revised, added elevations and note)

By: 

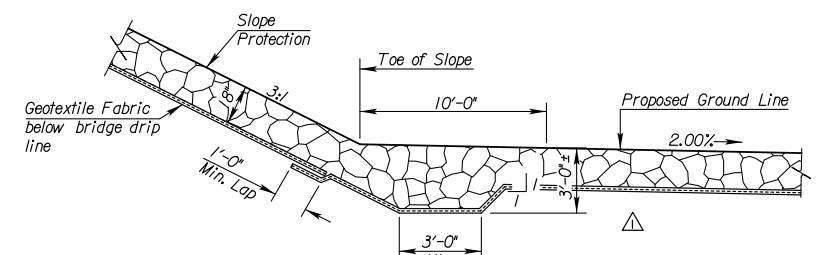
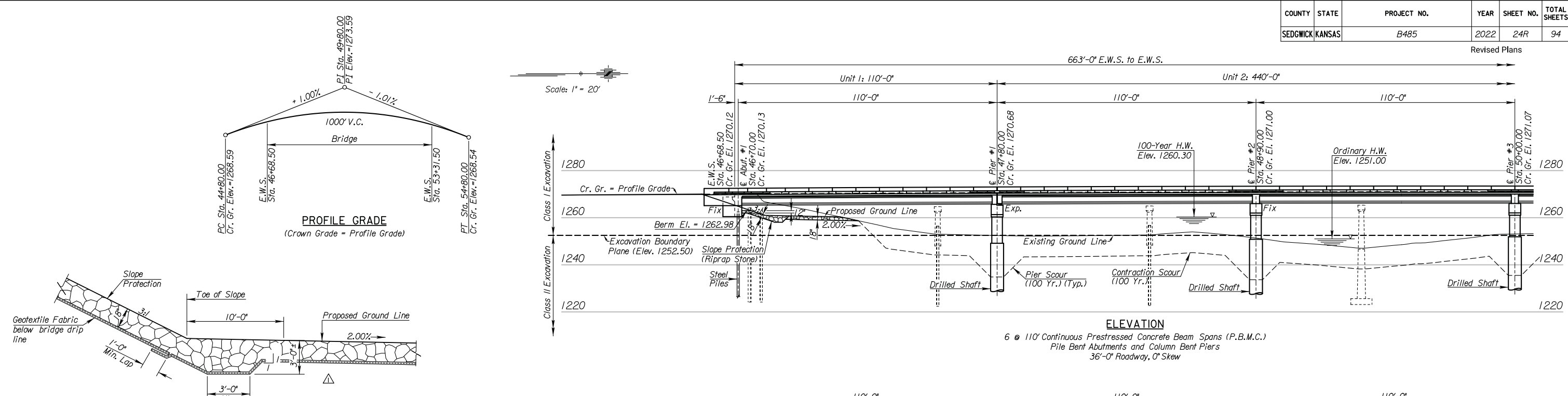
Lynn T. Packer, P.E.

Director of Public Works/County Engineer

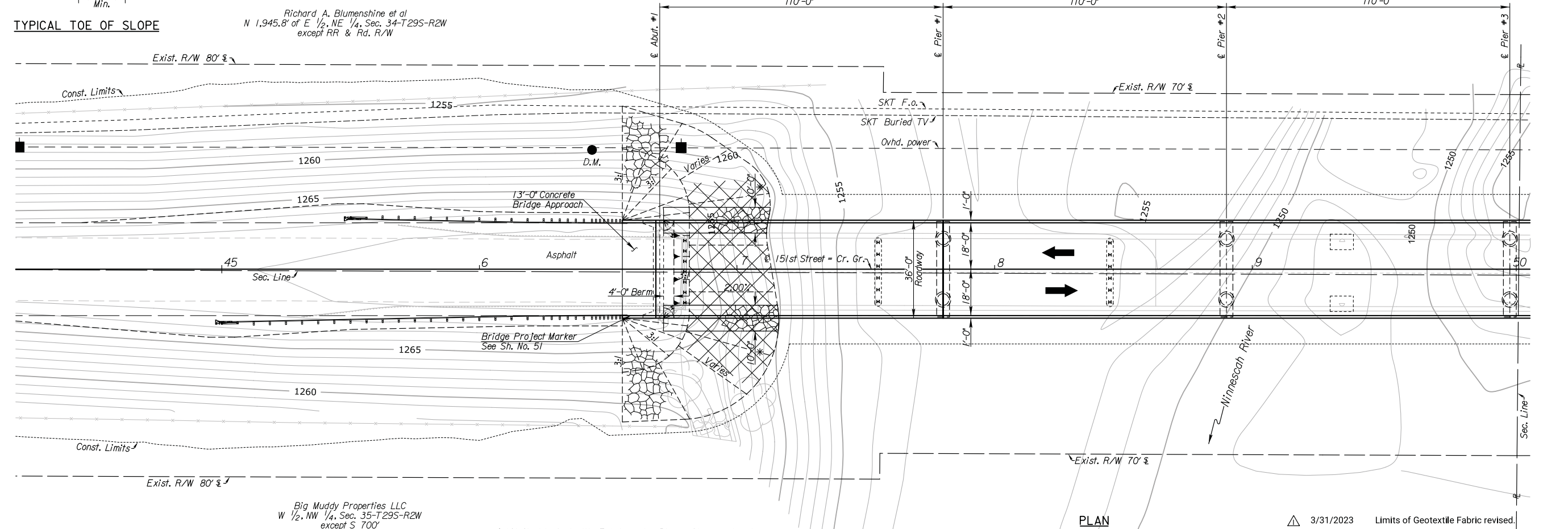
**Date: April 3, 2023**

COUNTY	STATE	PROJECT NO.	YEAR	SHEET NO.	TOTAL SHEETS
SEDGWICK	KANSAS	B485	2022	24R	94

Revised Plans



TYPICAL TOE OF SLOPE



PLAN

3/31/2023 Limits of Geotextile Fabric revised.

B.M. #204 T-post set flush with ground in the E. back of ditch along 151st St. W. ± 1' W. 1st hedge post S of pivot gate for field entrance to E. 48.0' Rt. & Sta. 39+96.5 Elev. = 1257.74

B.M. #203 T-post set flush with ground in the E. back of ditch along 151st St. W. ± 1' W. 1st hedge posts for R/W fence. ± 150' S. of S. end bridge. 57.0' Rt. & Sta. 45+38.6 Elev. = 1257.61

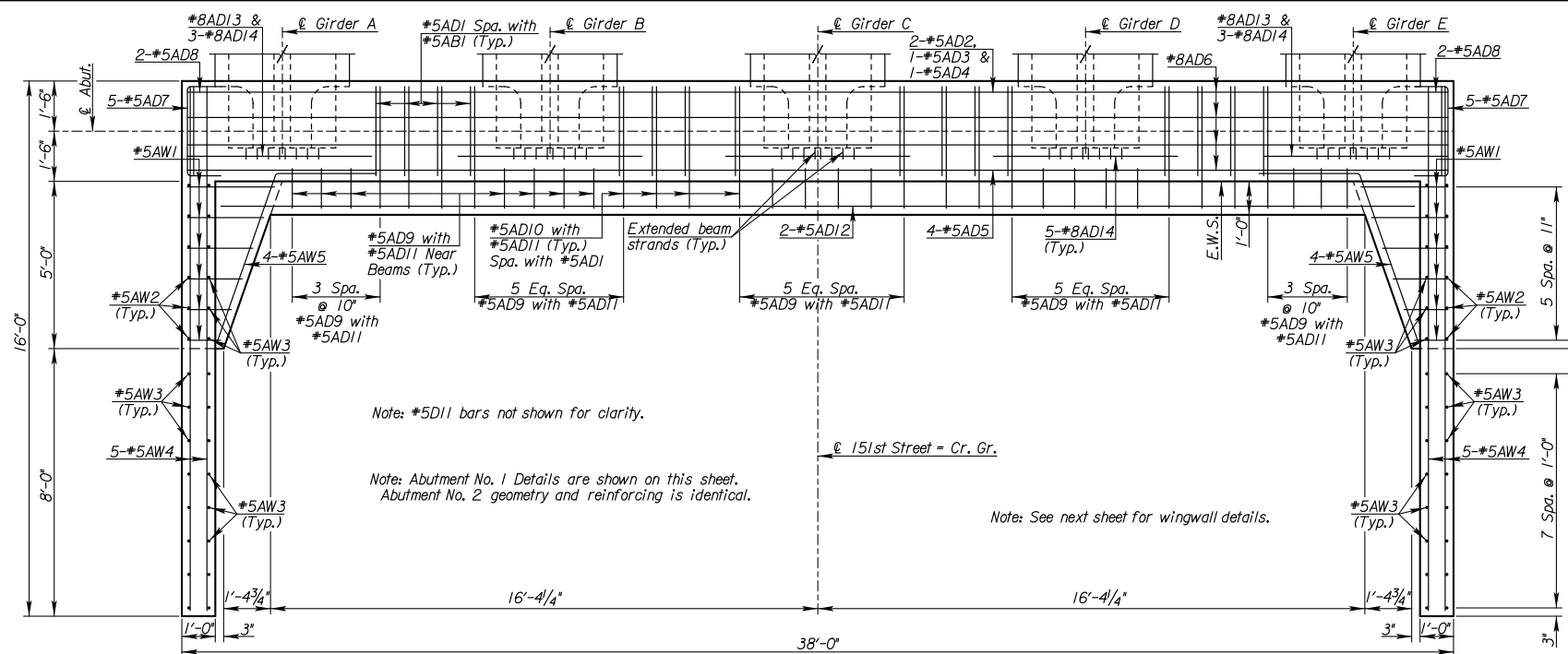
**Utility Owners**  
 Fiber Optic Southern Kansas Telephone  
 Cable TV Southern Kansas Telephone  
 Power Westar Energy

SEDGWICK COUNTY PUBLIC WORKS  
 BrIdge No. 00000000870251 STA. 50+00.00  
**CONSTRUCTION LAYOUT**  
 SPANS 1, 2 & 3  
 151st ST. W. OVER NINNESCAH RIVER  
 ProJ. No. B485 (80I-DD-5280) SEDGWICK Co.

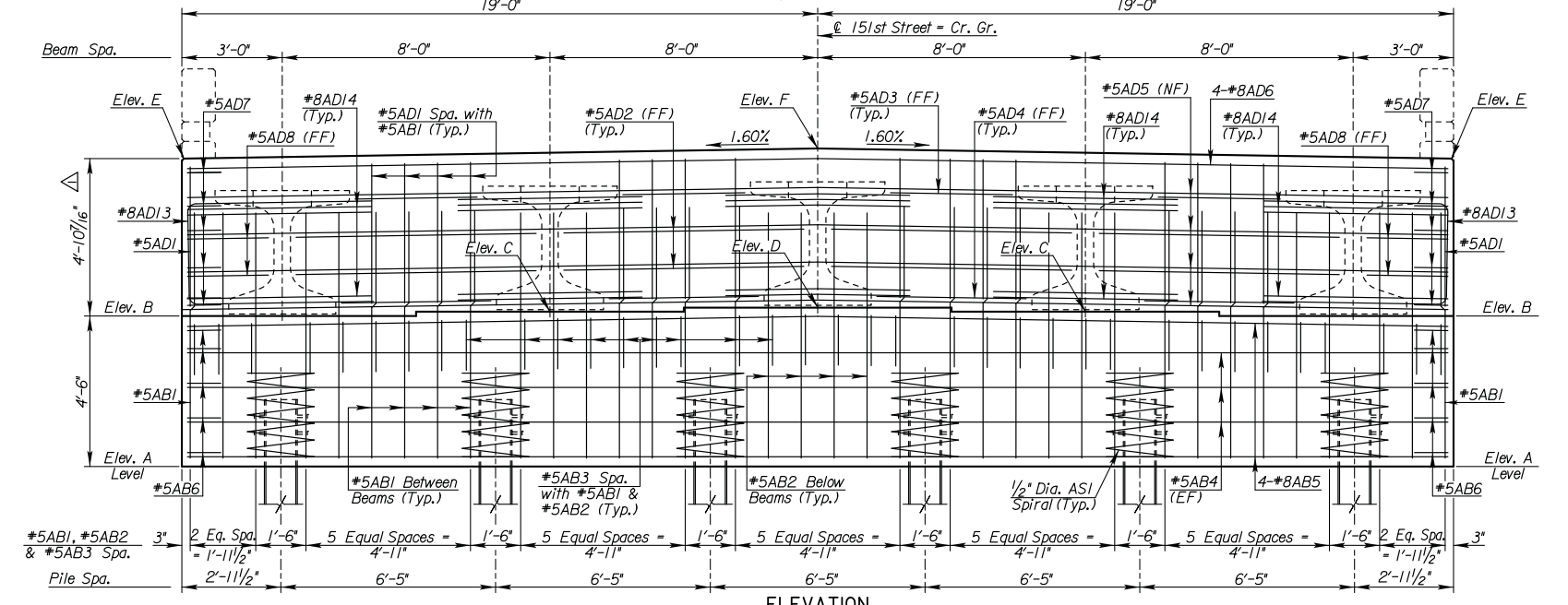
**PEC** PROFESSIONAL ENGINEERING CONSULTANTS, P.A.  
 303 SOUTH TOPEKA WICHITA, KS 67202  
 316-262-2891 www.pec1.com

Plotted By: mike.thompson  
 File: 170036br-004\_Rev.dgn  
 Plot Date: 03-APR-2023 13:05

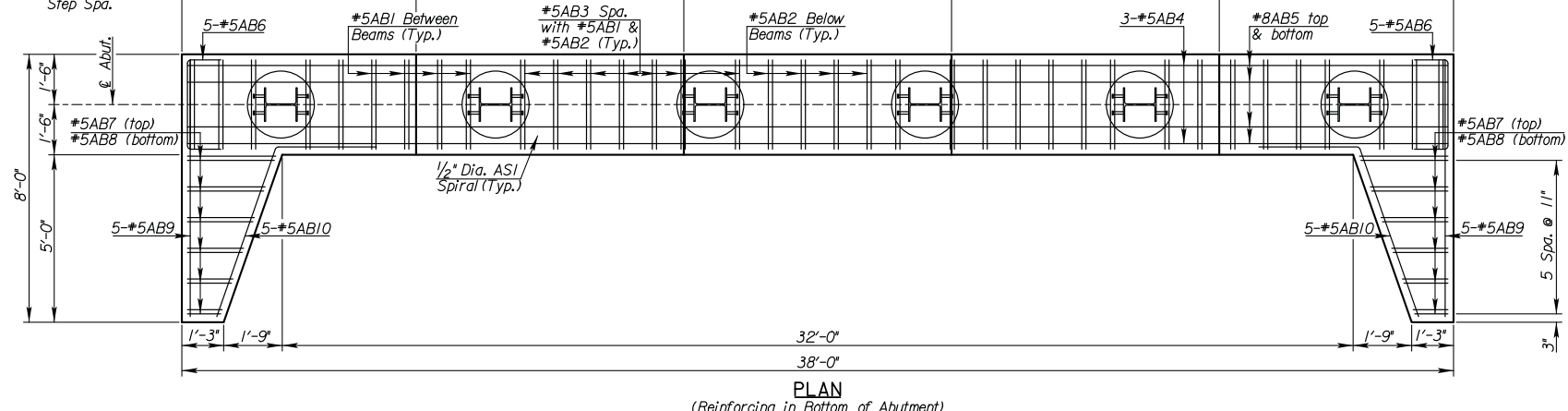
Revised Plans



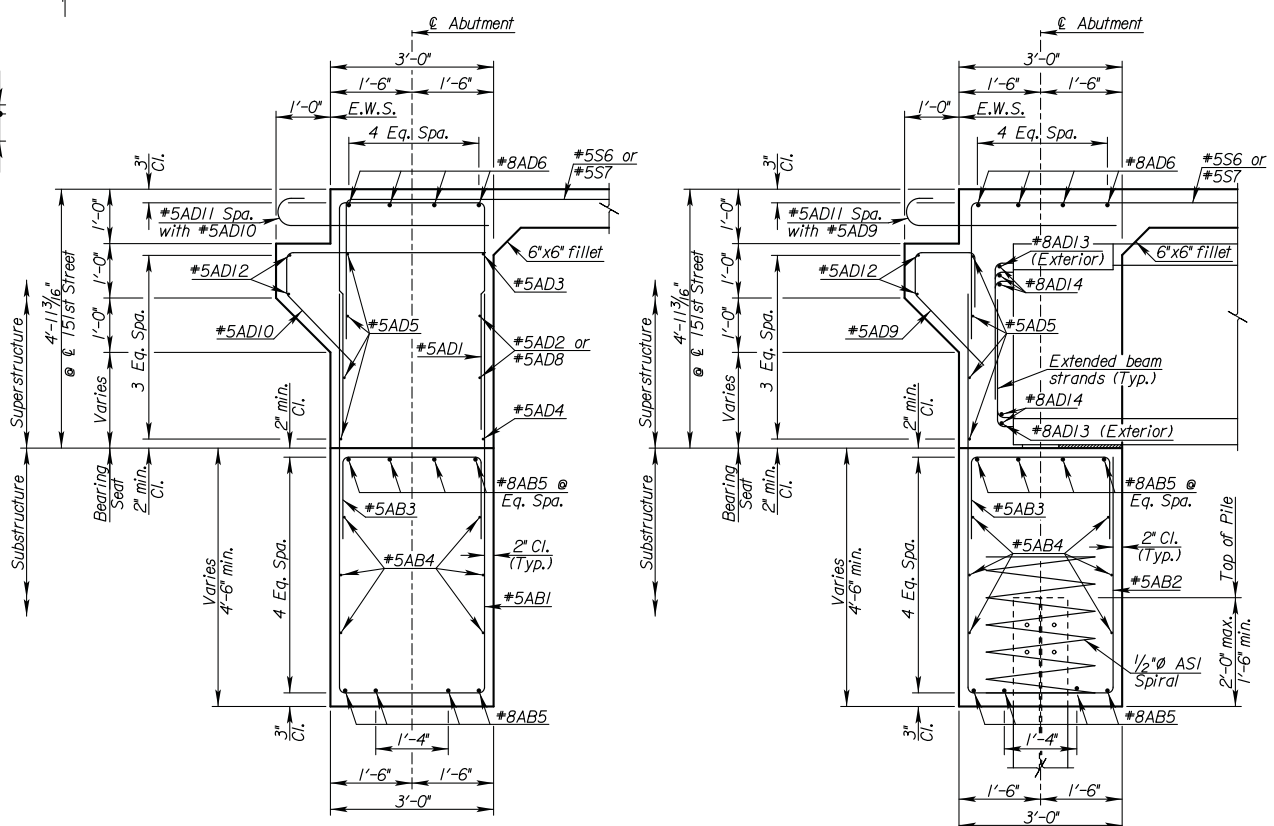
PLAN  
(Reinforcing in Top of Abutment)



ELEVATION

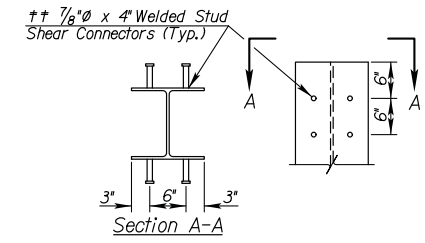


PLAN  
(Reinforcing in Bottom of Abutment)



TYPICAL SECTION BETWEEN BEAMS

TYPICAL SECTION AT BEAMS



PILE WELDED STUD SHEAR CONNECTOR DETAIL

Welded Stud Shear Anchors are subsidiary to HP12x53 Steel Piles.  
48 required for Abutment #1  
48 required for Abutment #2

3/31/2023 Dimensions updated.

LOCATION	ELEVATIONS					
	A	B	C	D	E	F
ABUT. #1	260.45	264.95	265.08	265.21	269.82	270.13
ABUT. #2	260.16	264.66	264.78	264.91	269.52	269.83

LEGEND  
NF = Near Face  
FF = Far Face  
EF = Each Face

SEDGWICK COUNTY PUBLIC WORKS  
BrIdge No. 00000000870251 STA. 50+00.00

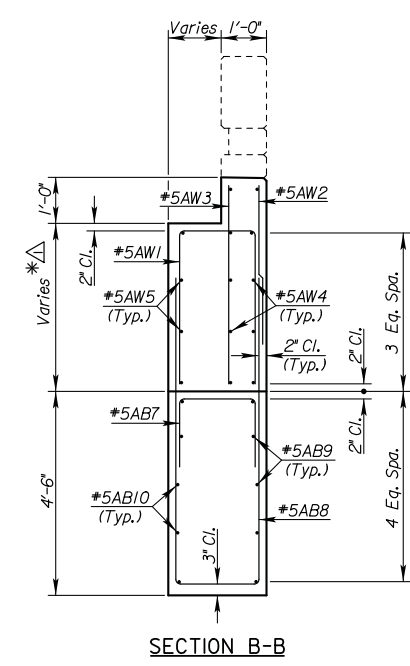
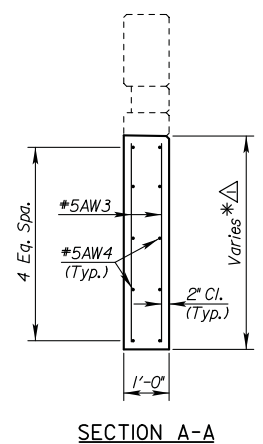
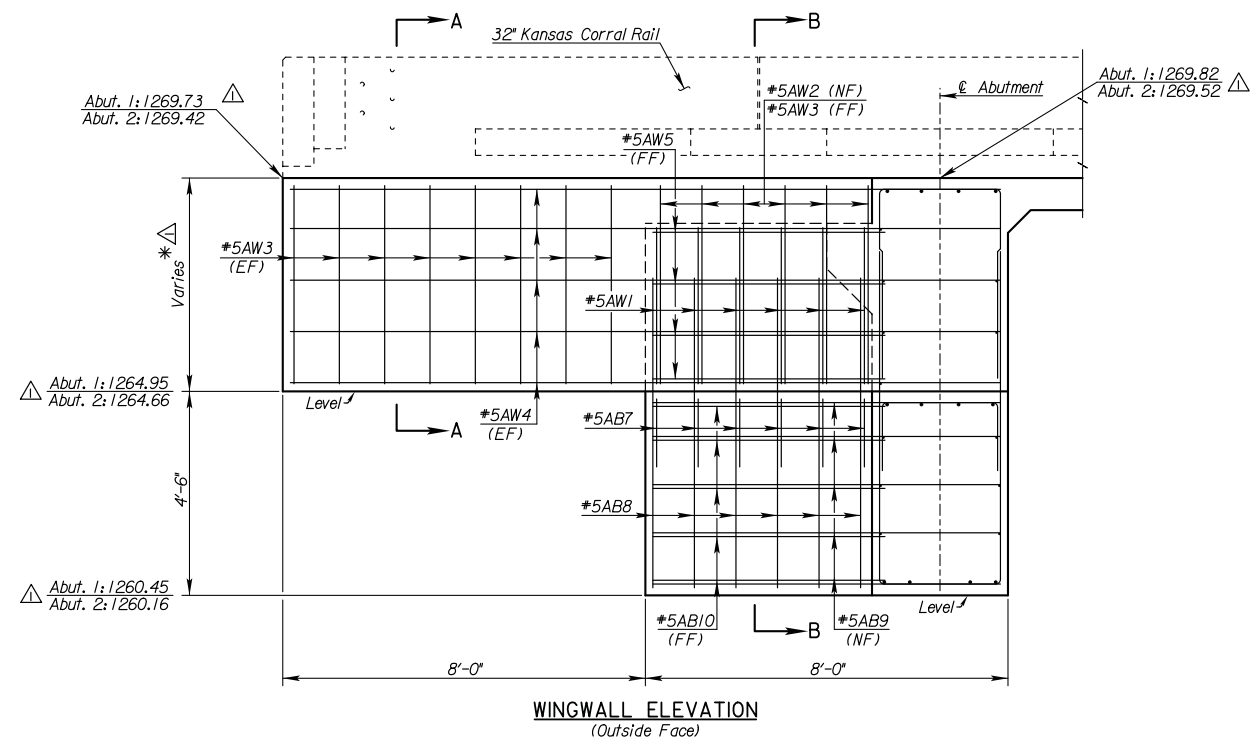
ABUTMENT DETAILS  
151st ST. W. OVER NINNECAH RIVER  
ProJ. No. B485 (801-DD-5280) SEDGWICK Co.

PROFESSIONAL ENGINEERING CONSULTANTS, P.A.  
303 SOUTH TOPEKA WICHITA, KS 67202  
316-262-2891 www.pec1.com

Plotted By: mike.thompson  
File: 170036bbr-006\_Rev.dgn  
Plot Date: 03-APR-2023 13:05

COUNTY	STATE	PROJECT NO.	YEAR	SHEET NO.	TOTAL SHEETS
SEDGWICK	KANSAS	B485	2022	29R	94

Revised Plans



△\* Note: Top of wingwall to follow profile grade.

Plotted By: mike.thompson Plot Location:  
 File: 170036br-006A\_Rev.dgn  
 Plot Date: 03-APR-2023 13:05

△ 3/31/2023 Dimensions revised, added elevations and note.

SEDGWICK COUNTY PUBLIC WORKS  
 Bridge No. 00000000870251 STA. 50+00.00

ABUTMENT WINGWALL DETAILS

151st ST. W. OVER NINNECAH RIVER  
 Proj. No. B485 (80I-DD-5280) SEDGWICK Co.

LEGEND  
 NF = Near Face  
 FF = Far Face  
 EF = Each Face