



**Sedgwick County**



**EMS**

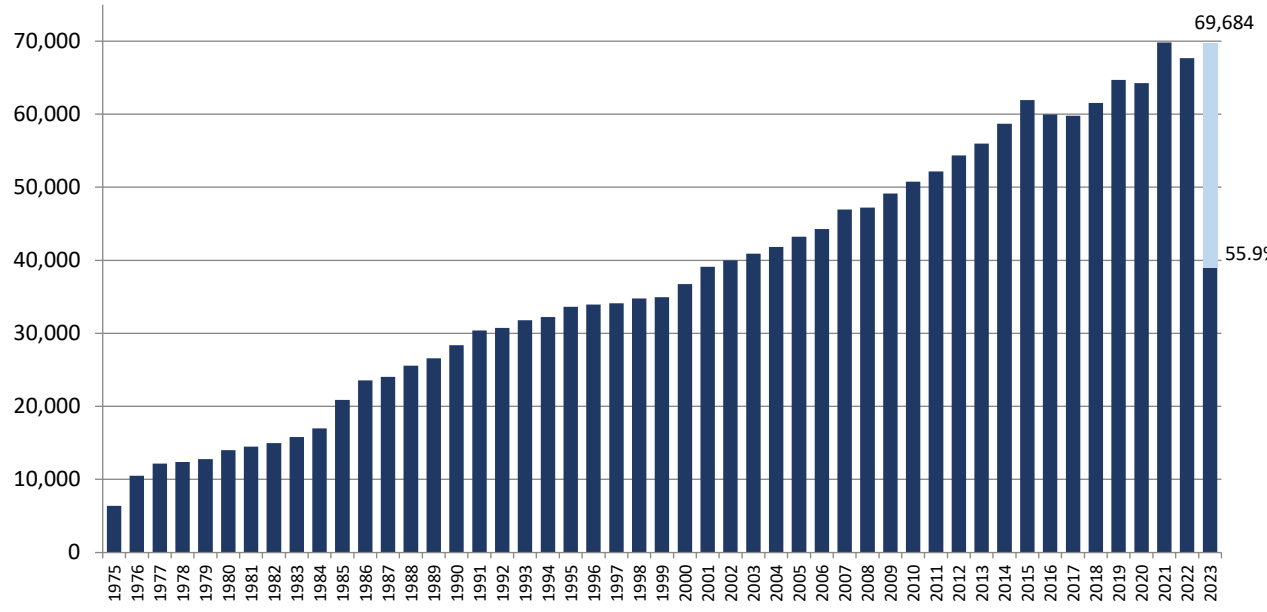


# Monthly Operations Report July 2023

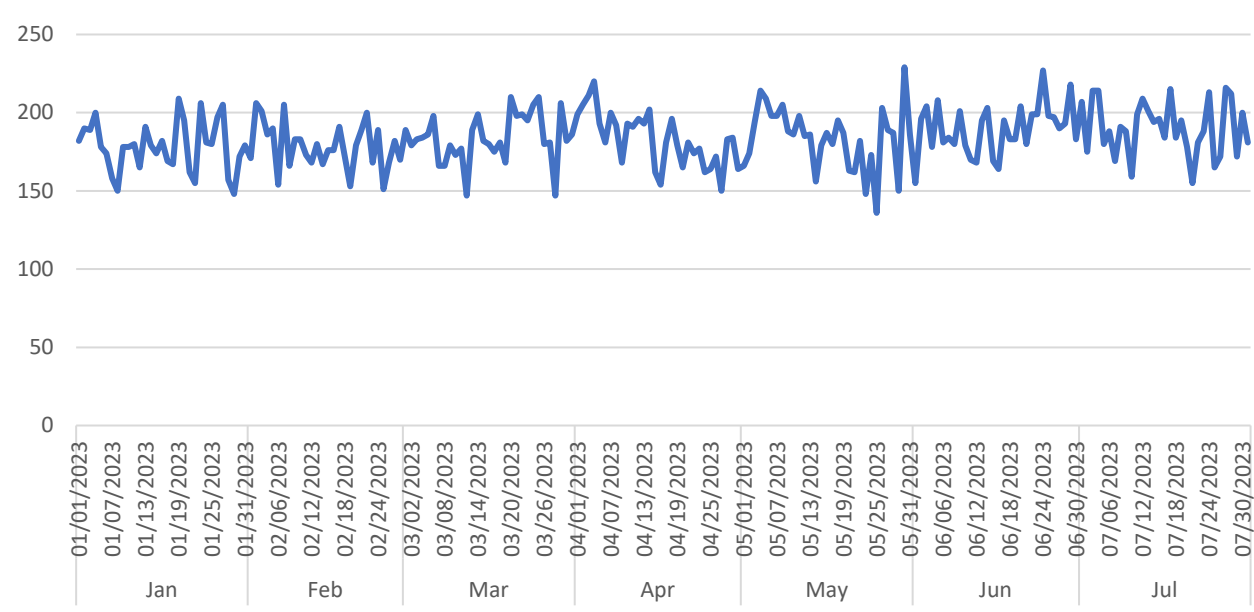
Prepared by Victor Okwo  
EMS Systems & Chief Data Officer  
August 15, 2023

# Call Volume & Response Time

### Annual Call Volume

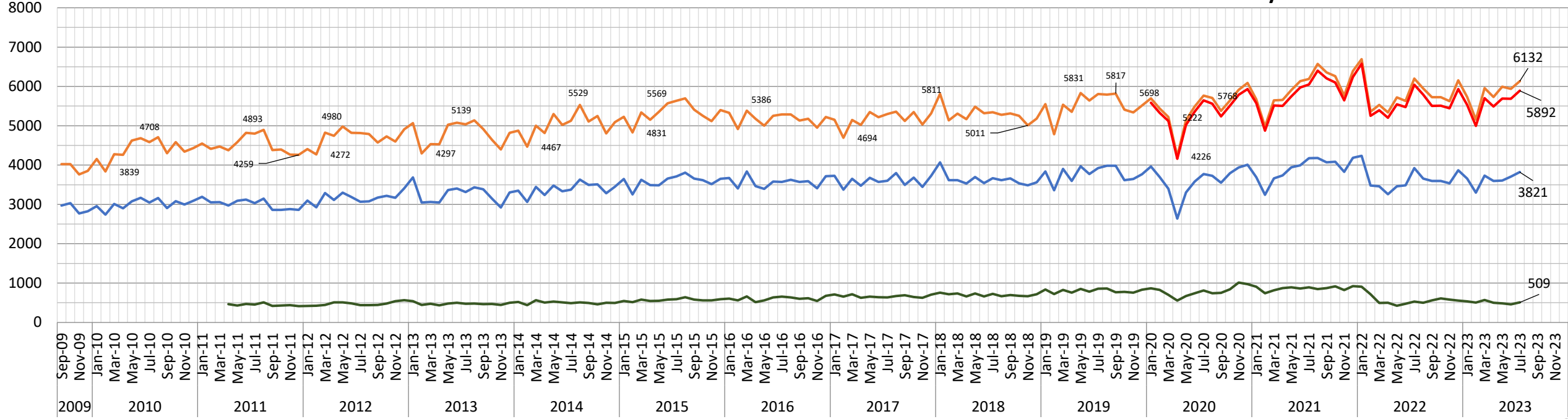


### Calls by Day



— Total Charts   
 — Transports   
 — Non-Emerg   
 — Distinct Call Count

### Volume Trends by Month



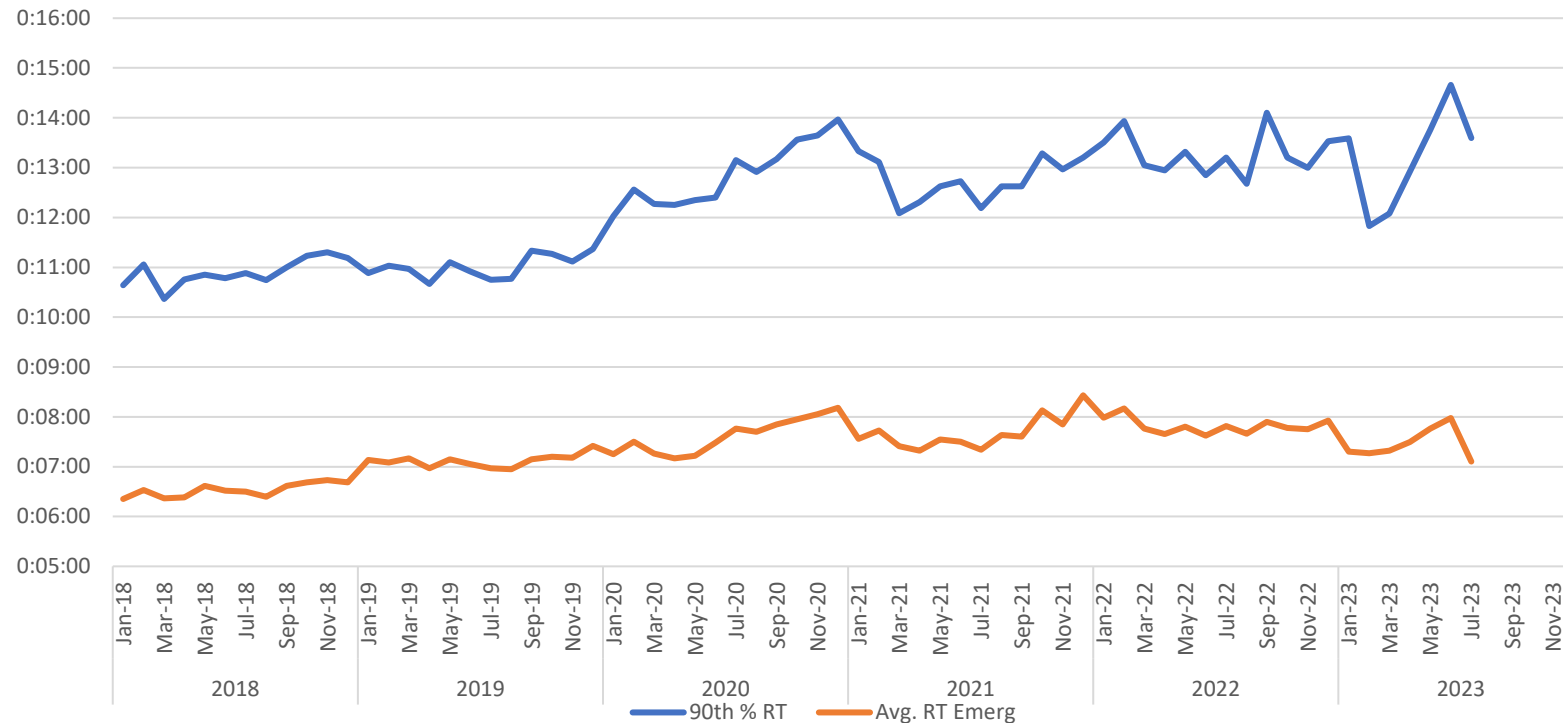
All Calls			Valid Calls			Transports				Non-Emergency		
Row Labels	Count of Call #	Avg/Day	Row Labels	Count of Call #		Row Labels	Count of Call #	Txport %	Txport Valid %	Row Labels	Count of Call #	Avg/Day
Jan	5,530	178	Jan	4,998	90.4%	Jan	3,657	66.1%	73.1%	Jan	536	17
Feb	4,996	178	Feb	4,532	90.7%	Feb	3,298	66.0%	72.8%	Feb	506	18
Mar	5,700	184	Mar	5,114	89.7%	Mar	3,730	65.4%	72.9%	Mar	572	18
Apr	5,491	183	Apr	4,882	88.9%	Apr	3,598	65.5%	73.7%	Apr	498	17
May	5,692	184	May	5,030	88.4%	May	3,608	63.4%	71.7%	May	484	16
Jun	5,684	189	Jun	5,088	89.5%	Jun	3,706	65.2%	72.8%	Jun	458	15
Jul	5,892	190	Jul	5,193	88.1%	Jul	3,821	64.9%	73.6%	Jul	509	16
Aug			Aug			Aug				Aug		
Sept			Sept			Sept				Sept		
<b>Grand Total</b>	<b>38,984</b>	<b>184</b>	<b>Grand Total</b>	<b>34,837</b>	<b>89.4%</b>	<b>Grand Total</b>	<b>25,418</b>	<b>65.2%</b>	<b>73.0%</b>	<b>Grand Total</b>	<b>3,563</b>	<b>17</b>

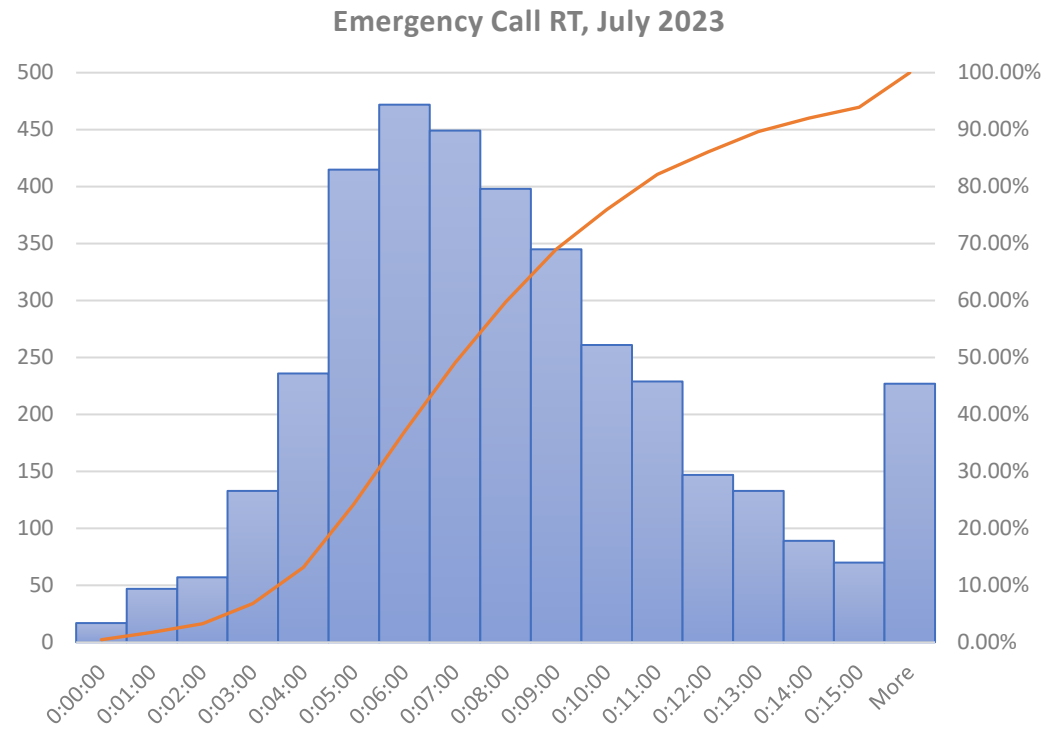
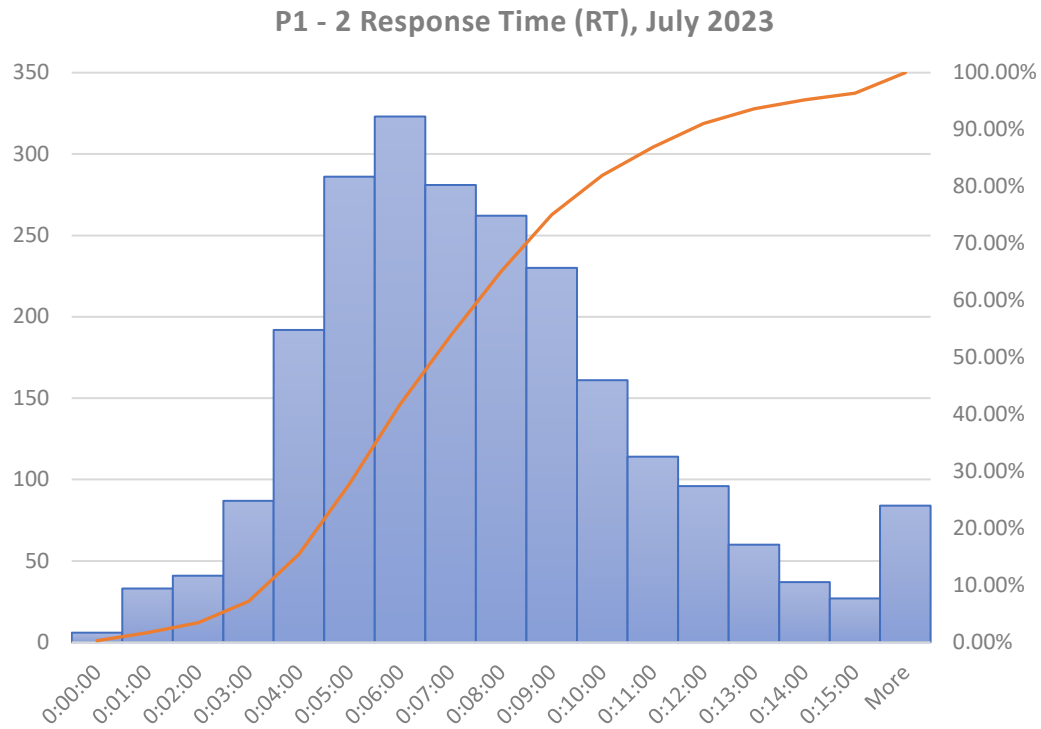
CRV		
Row Labels	Count of Call #	Avg/Day
Jan	21	0.7
Feb	17	0.6
Mar	16	0.5
Apr	19	0.6
May	12	0.4
Jun	12	0.4
Jul	18	0.6
Aug		
Sept		
<b>Grand Total</b>	<b>115</b>	<b>0.5</b>

RT All Calls		
	Average of RT	90th %
Jan	0:07:17	0:14:18
Feb	0:07:15	0:13:09
Mar	0:07:19	0:13:00
Apr	0:07:31	0:15:11
May	0:07:39	0:14:10
Jun	0:07:58	0:15:30
Jul	0:07:05	0:15:01
Aug		
Sept		
<b>Grand Total</b>	<b>0:07:30</b>	<b>0:14:24</b>

RT P1 & P2 (Lights & Sirens)		
	Average of RT	90th %
Jan	0:06:37	0:10:31
Feb	0:06:39	0:10:31
Mar	0:06:42	0:10:48
Apr	0:06:44	0:11:12
May	0:06:59	0:11:55
Jun	0:07:16	0:12:24
Jul	0:06:28	0:11:56
Aug		
Sept		
<b>Grand Total</b>	<b>0:06:46</b>	<b>0:11:21</b>

90th Percentile RTR  
All Emergency Calls





Response times (RT) are measured from dispatch to arrival on scene. EMS responds to calls using lights and sirens on Priority 1 and 2 emergency calls only, which was 63% of emergency calls in July.

# Staffing & Workload

Scheduled Unit Hours = 11,904

Produced Unit Hours = 10,621.5 (89%)

# Sedgwick County EMS Resource Deployment Schedule

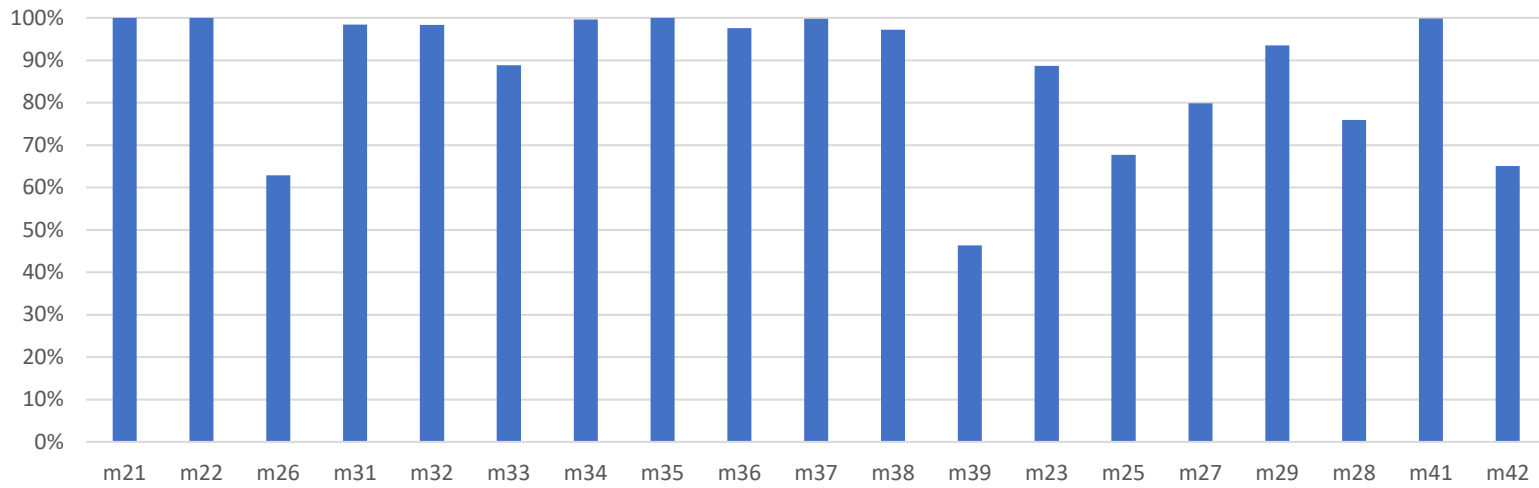
revised December 7, 2020; updated 9/12/2022

		Unit	Post	Sunday		Monday		Tuesday		Wednesday		Thursday		Friday		Sunday		
<b>Ambulance</b>		<b>21</b>	11															
		<b>22</b>	12															
		<b>26</b>	14															
		<b>27</b>	16															
		<b>31</b>	1															
		<b>32</b>	2															
		<b>33</b>	3			0600-1800	1800-0600	0600-1800	1800-0600	0600-1800	1800-0600	0600-1800	1800-0600	0600-1800	1800-0600	0600-1800	1800-0600	
		<b>34</b>	4															
		<b>35</b>	5															
		<b>36</b>	6															
		<b>37</b>	7															
		<b>38</b>	8															
		<b>39</b>	9															
	<b>23</b>	10			0900-2100		0900-2100		0900-2100		0900-2100		0900-2100		0900-2100		0900-2100	
	<b>25</b>	45 → 12			0900-2100		0900-2100		0900-2100		0900-2100		0900-2100		0900-2100		0900-2100	
	<b>42</b>	14																
	<b>28</b>	20			1200-0000		1200-0000		1200-0000		1200-0000		1200-0000		1200-0000		1200-0000	
	<b>29</b>	5			1200-0000		1200-0000		1200-0000		1200-0000		1200-0000		1200-0000		1200-0000	
	<b>41</b>	15																
	<b>44 (surge)</b>	20			Varies		Varies		Varies		Varies		Varies		Varies		Varies	
<b>DC</b>	<b>1</b>	3			0600-1800	1800-0600	0600-1800	1800-0600	0600-1800	1800-0600	0600-1800	1800-0600	0600-1800	1800-0600	0600-1800	1800-0600	0600-1800	1800-0600
	<b>2</b>	5			0600-1800	1800-0600	0600-1800	1800-0600	0600-1800	1800-0600	0600-1800	1800-0600	0600-1800	1800-0600	0600-1800	1800-0600	0600-1800	1800-0600
	<b>3</b>	10			1000-2200		1000-2200		1000-2200		1000-2200		1000-2200		1000-2200		1000-2200	
<b>CRV</b>	<b>81</b>	B1 → 81			0600 - 1800		0600 - 1800		0600 - 1800		0600 - 1800		0600 - 1800		0600 - 1800		0600 - 1800	
	<b>82</b>	B1 → 82			0600 - 1800		0600 - 1800		0600 - 1800		0600 - 1800		0600 - 1800		0600 - 1800		0600 - 1800	

DC = District Chief  
 CRV = Community Response Vehicle

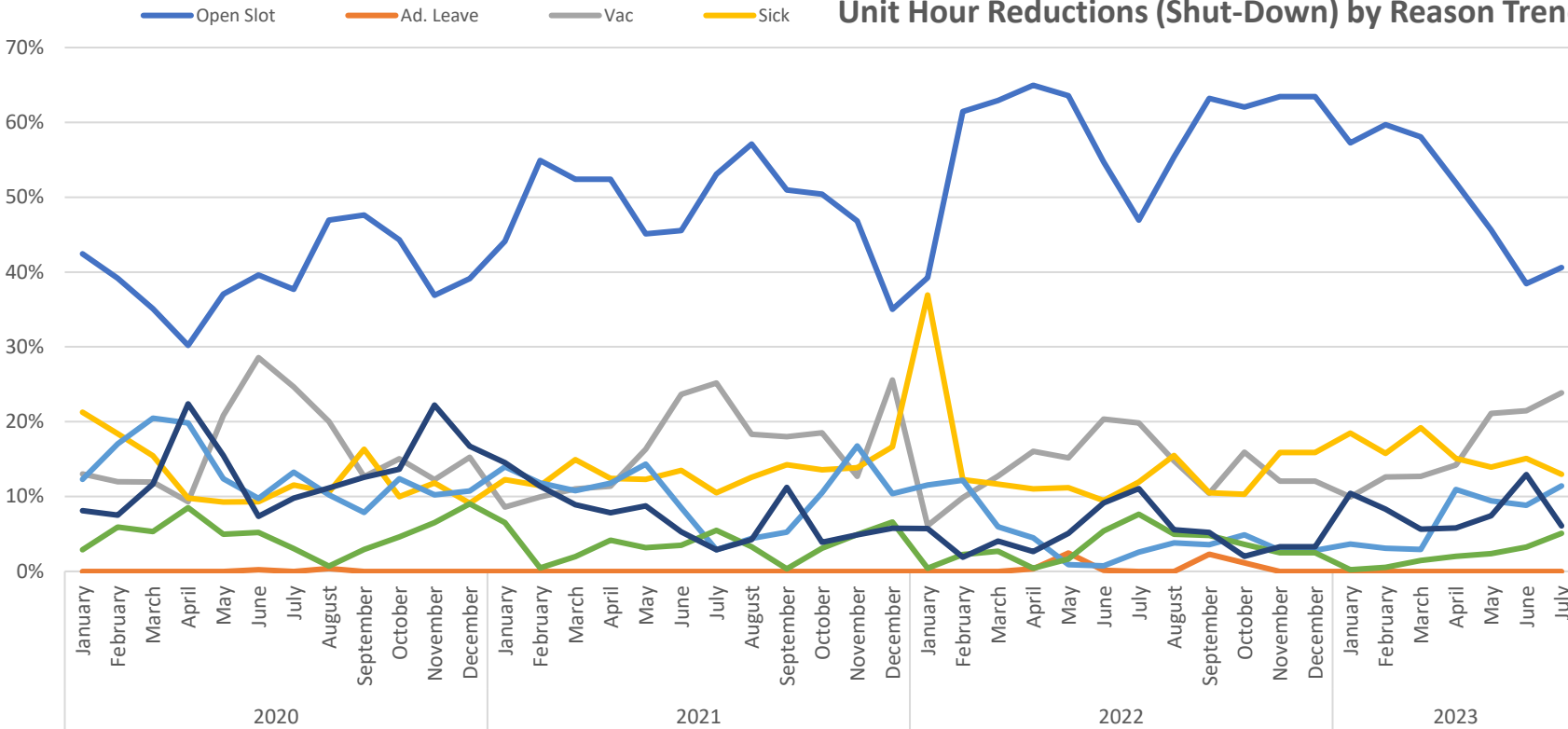


### Monthly Unit Uptime

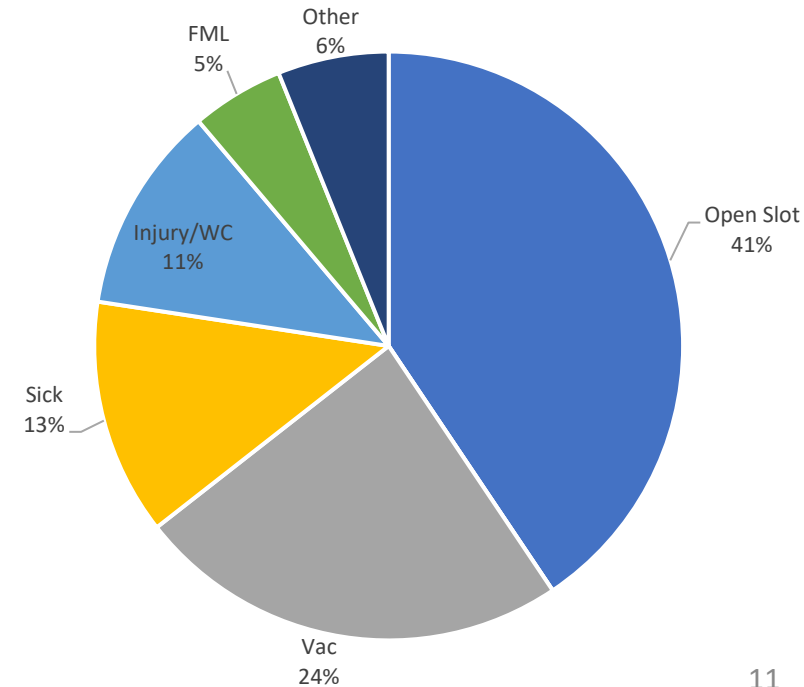


July ALS First Response Vehicle Uptime		
	CRV 81 (Clearwater)	CRV 82 (Cheney)
Hours Scheduled	372	372
Hours staffed	253.75	285
Percentage staffed	68%	77%

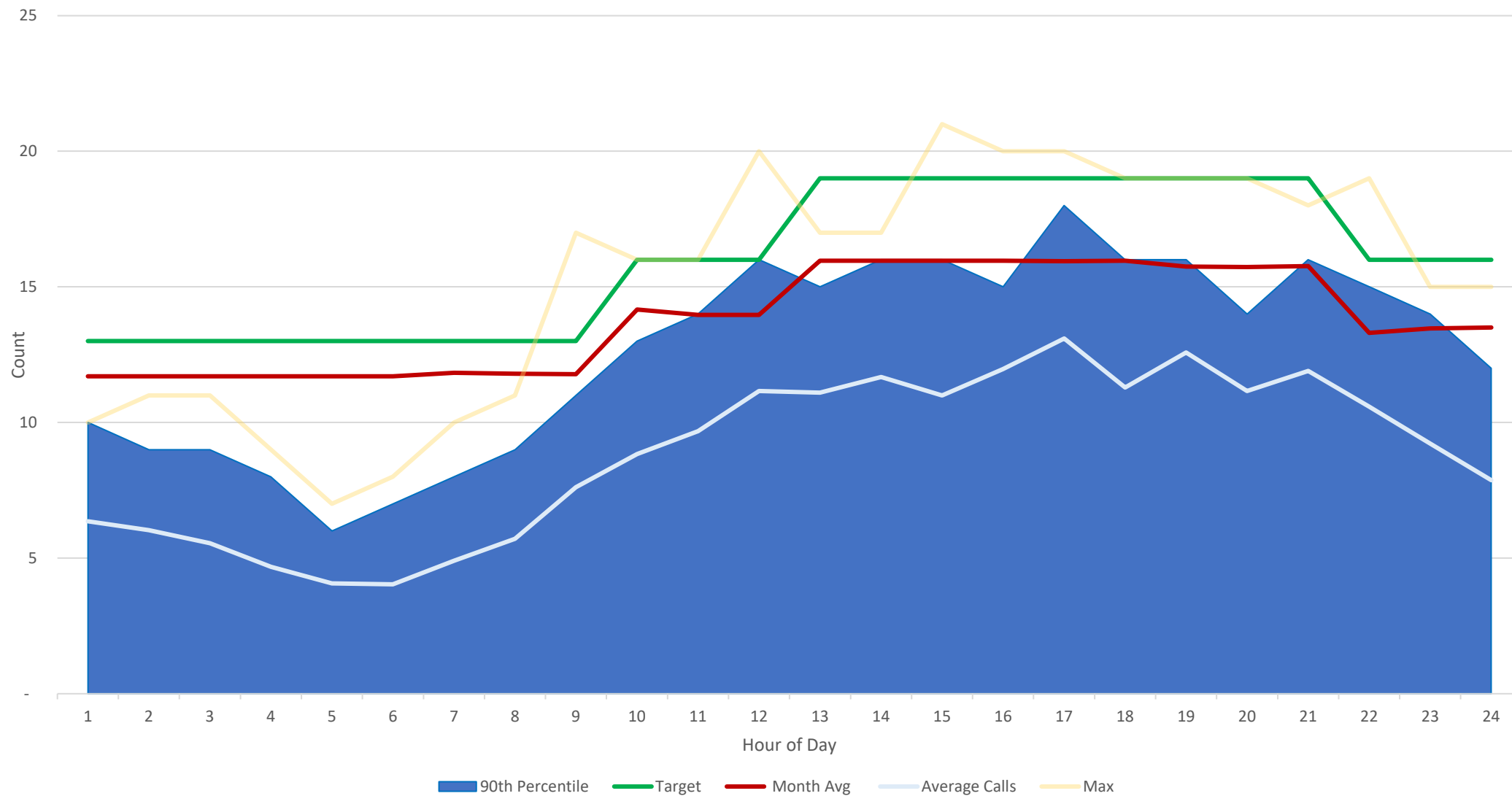
### Unit Hour Reductions (Shut-Down) by Reason Trend



### July Unit Hour Reduction by Reason



### Monthly Resource Deployment Performance



This chart depicts the monthly staffing target and production against the average, 90<sup>th</sup> percentile, and maximum number of EMS responses for the month, across each hour of the day. It tabulates each call by the hour (integer) it was dispatched.