



Sedgwick County



EMS

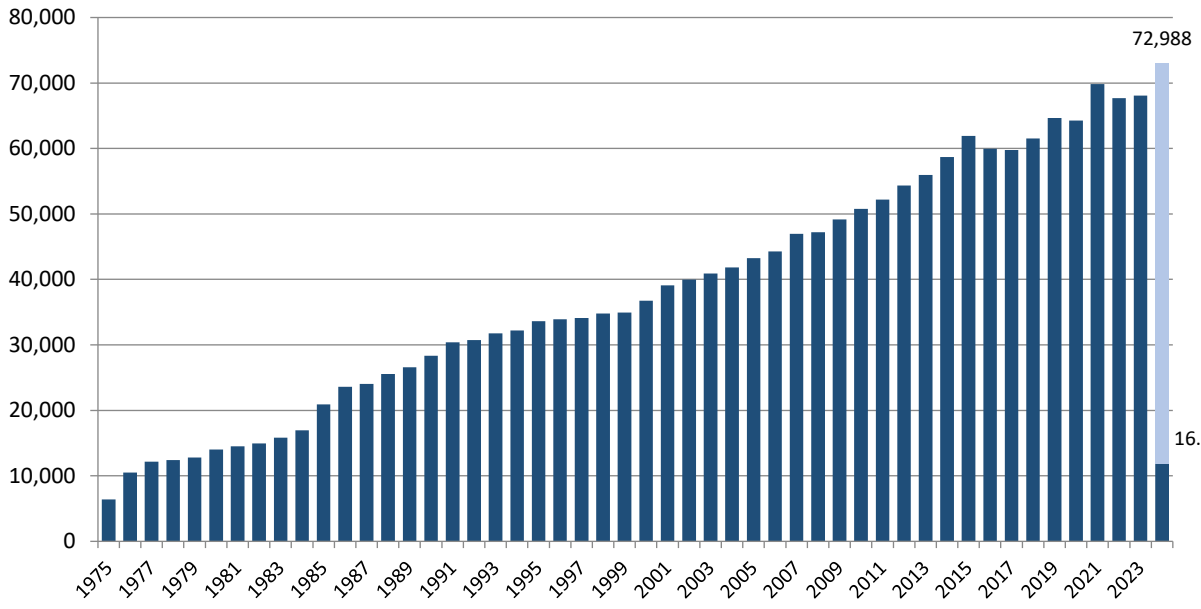


Monthly Operations Report February 2024

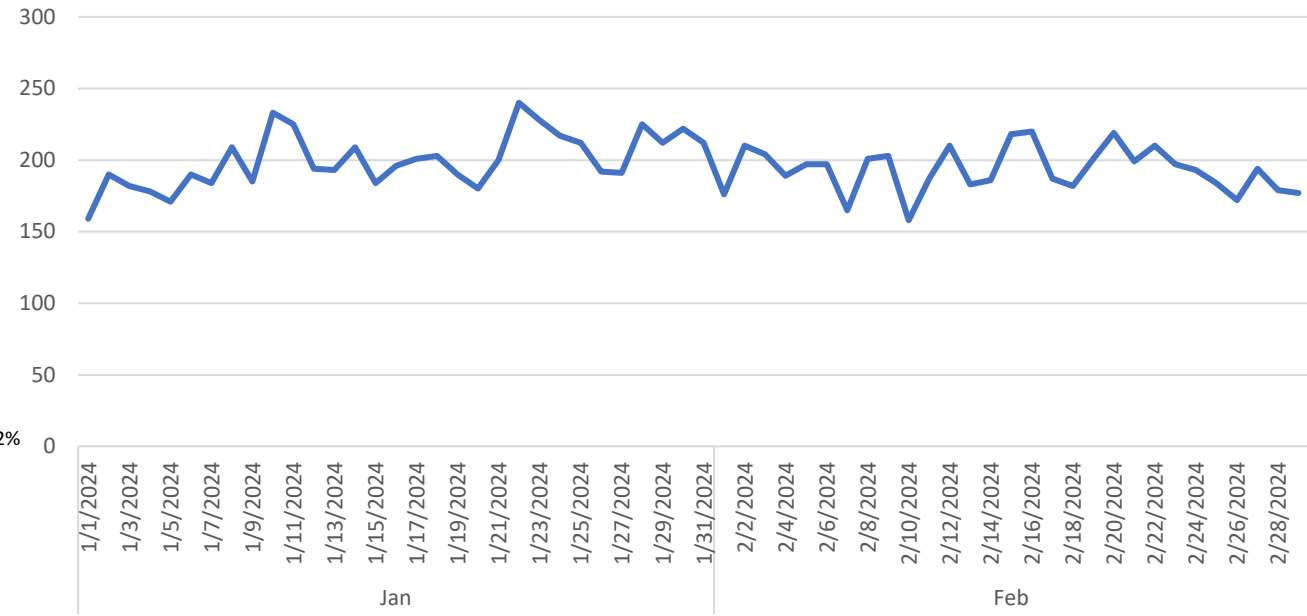
Prepared by Victor Okwo
EMS Systems & Chief Data Officer
March 11, 2024

Call Volume & Response Time

Annual Call Volume



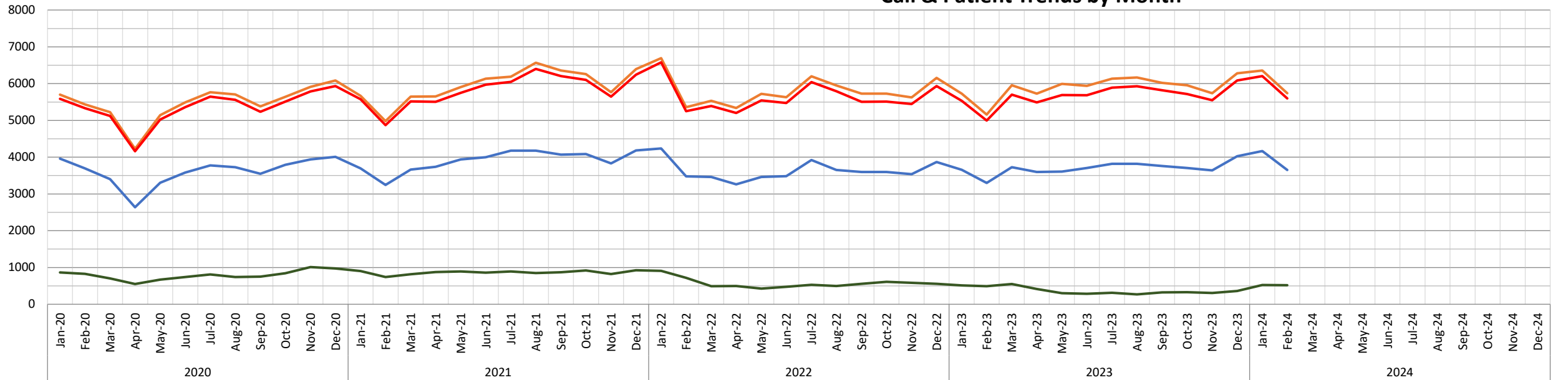
Calls by Day



— Total Patients
 — Total Transports
 — Total P8 Calls
 — Total Calls

Call & Patient Trends by Month

*P8 = Non-emergency interfacility transfer

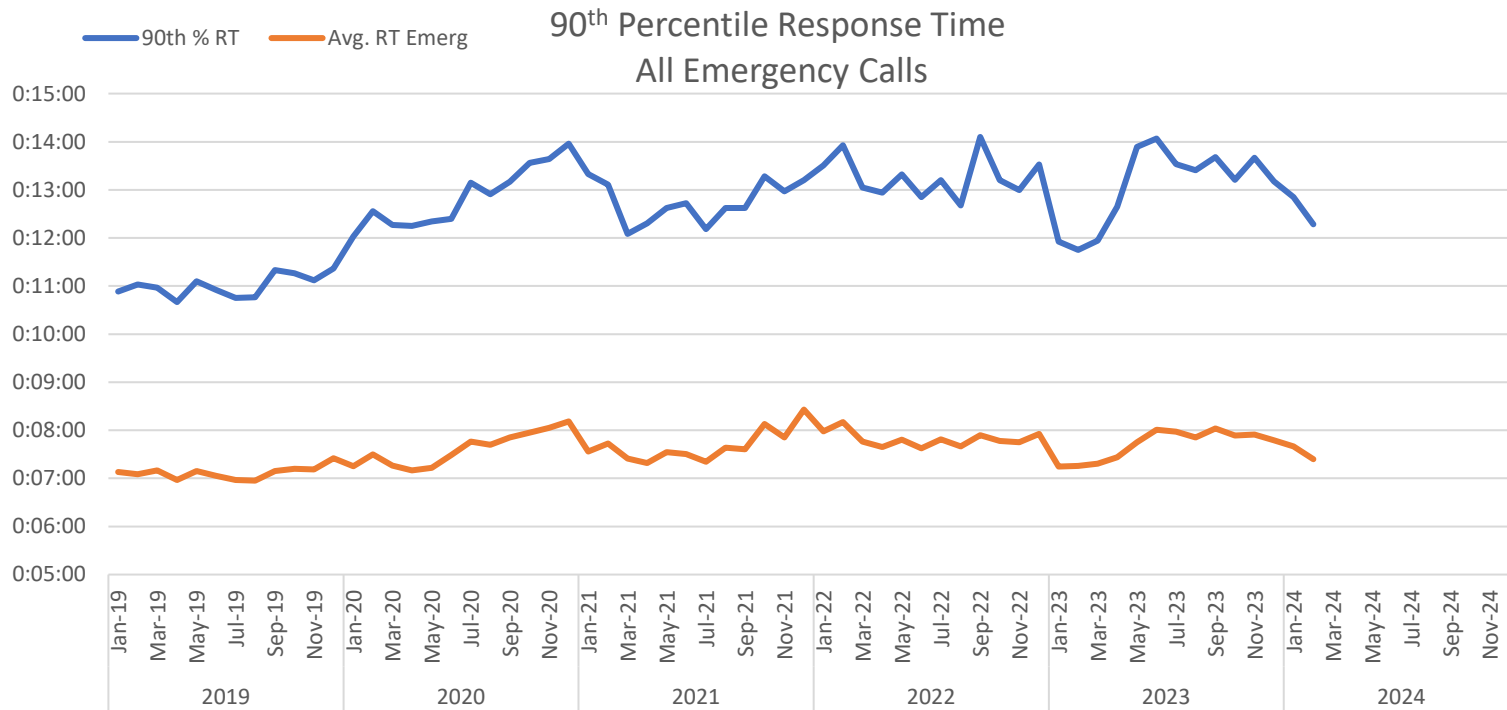


All Calls			Valid Calls			Transports				Non-Emergency		
Row Labels	Count of Call #	Avg/Day	Row Labels	Count of Call #		Row Labels	Count of Call #	Txport %	Txport Valid %	Row Labels	Count of Call #	Avg/Day
Jan	6,204	200	Jan	5,416	87.3%	Jan	4,165	67.1%	76.9%	Jan	522	17
Feb	5,598	193	Feb	4,954	88.5%	Feb	3,650	65.2%	73.7%	Feb	516	18
Mar			Mar			Mar				Mar		
Apr			Apr			Apr				Apr		
May			May			May				May		
Jun			Jun			Jun				Jun		
Jul			Jul			Jul				Jul		
Aug			Aug			Aug				Aug		
Sept			Sept			Sept				Sept		
Oct			Oct			Oct				Oct		
Nov			Nov			Nov				Nov		
Grand Total	11,801	197	Grand Total	10,370	87.9%	Grand Total	7,815	66.2%	75.4%	Grand Total	1038	17

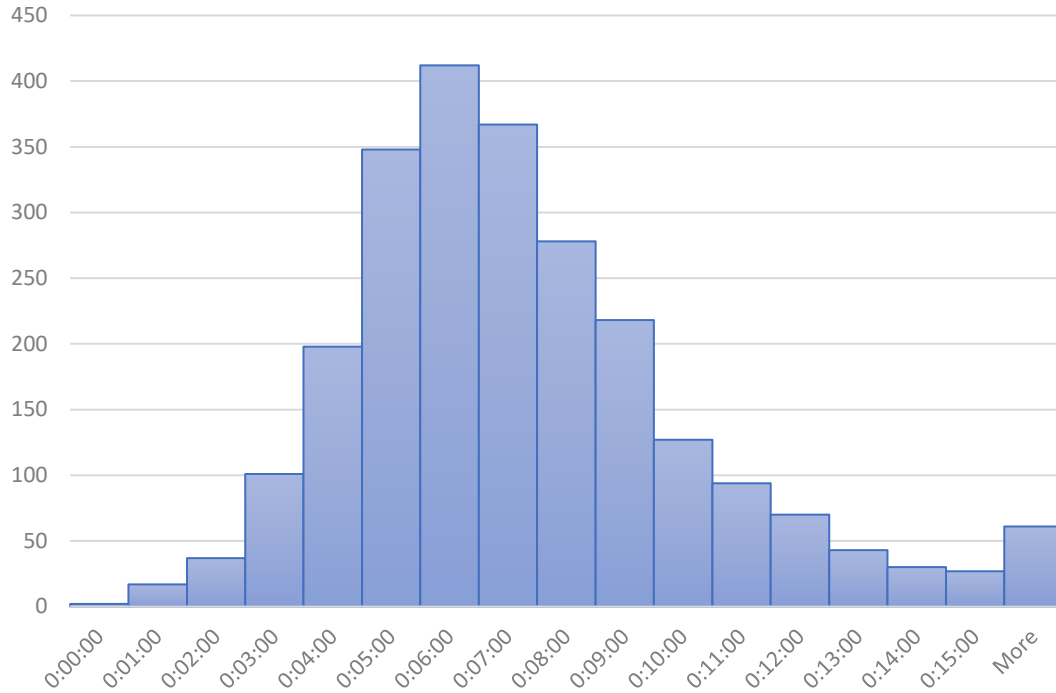
CRV		
Row Labels	Count of Call #	Avg/Day
Jan	18	0.6
Feb	11	0.4
Mar		
Apr		
May		
Jun		
Jul		
Aug		
Sept		
Oct		
Nov		
Grand Total	29	0.5

RT All Calls		
	Average of RT	90th %
Jan	0:07:48	0:17:27
Feb	0:07:27	0:13:19
Mar		
Apr		
May		
Jun		
Jul		
Aug		
Sept		
Oct		
Nov		
Grand Total	0:07:38	0:15:40

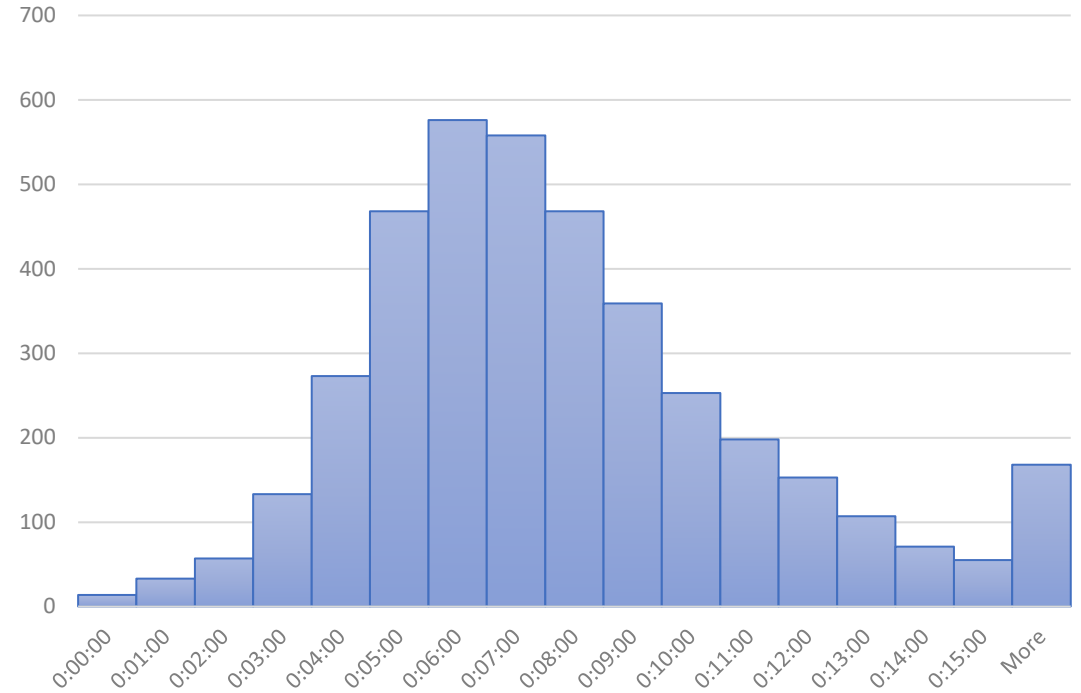
RT P1 & P2 (Lights & Sirens)		
	Average of RT	90th %
Jan	0:07:01	0:11:36
Feb	0:06:49	0:11:02
Mar		
Apr		
May		
Jun		
Jul		
Aug		
Sept		
Oct		
Nov		
Grand Total	0:06:55	0:11:20



P1 - P2 Response Time (RT), February 2024



P1 - P6 RT, February 2024



P1-P2 = Emergency, lights & sirens response
 P3-P6 = Emergency, no lights & sirens response

"More" includes times where units stand-off due to scene safety

Response times (RT) are measured from dispatch to arrival on scene. EMS responds to calls using lights and sirens on Priority 1 and 2 emergency calls only, which was 62% of emergency calls in February.

Staffing & Workload

Scheduled Unit Hours = 11,832

Produced Unit Hours = 11,017 (93%)

Sedgwick County EMS Resource Deployment Schedule

revised December 7, 2020; updated 8/13/2023

		Unit	Post	Sunday		Monday		Tuesday		Wednesday		Thursday		Friday		Sunday	
Ambulance		21	11														
		22	12														
		26	14														
		27	16														
		31	20														
		32	2														
		33	3	0600-1800	1800-0600	0600-1800	1800-0600	0600-1800	1800-0600	0600-1800	1800-0600	0600-1800	1800-0600	0600-1800	1800-0600	0600-1800	1800-0600
		34	4														
		35	5														
		36	6														
		37	7														
		38	8														
		39	9														
		23	10	0900-2100		0900-2100		0900-2100		0900-2100		0900-2100		0900-2100		0900-2100	
		25	45														
	42	14	1200-0000		1200-0000		1200-0000		1200-0000		1200-0000		1200-0000		1200-0000		
	29	5															
	41	15	1500-0300		1500-0300		1500-0300		1500-0300		1500-0300		1500-0300		1500-0300		
	28	10															
	45 (surge)	20	Varies		Varies		Varies		Varies		Varies		Varies		Varies		
DC	1	3	0600-1800	1800-0600	0600-1800	1800-0600	0600-1800	1800-0600	0600-1800	1800-0600	0600-1800	1800-0600	0600-1800	1800-0600	0600-1800	1800-0600	
	2	5	0600-1800	1800-0600	0600-1800	1800-0600	0600-1800	1800-0600	0600-1800	1800-0600	0600-1800	1800-0600	0600-1800	1800-0600	0600-1800	1800-0600	
	3	10	1000-2200		1000-2200		1000-2200		1000-2200		1000-2200		1000-2200		1000-2200		
CRV	81	81	0600 - 1800		0600 - 1800		0600 - 1800		0600 - 1800		0600 - 1800		0600 - 1800		0600 - 1800		
	82	B1 → 82															

DC = District Chief

CRV = Community Response Vehicle

ALS First Response Vehicle Uptime			
	CRV 81 (Clearwater)	CRV 82 (Cheney)	Ambulances
Hours Scheduled	348	348	11,832
Hours staffed	332.75	324	11,017
Percentage staffed	96%	93%	93%

Monthly Unit On Duty %

