

KDADS & Sedgwick County



Town Hall Meeting

Campus High School

For more information
on the project:



August 1, 2024

Welcome

Agenda

Welcome

Sarah Lopez, Sedgwick County Commissioner

Agenda and Meeting Format

Monica Murnan, Learning Tree Institute at Greenbush,
Director

County Update

Tania Cole, Sedgwick County, Assistant County Manager

KDADS Update

Scott Brunner, Kansas Department of Aging and Disability
Services, Deputy Secretary

Design Walkthrough

Basil Sherman, Pulse Design Group, Principal

OneRise Plan

Matthew Tannehill, OneRise Health Campus, Director of
Strategic Initiatives

Moderated Q&A

Panel

South Central Regional Mental Health Hospital

Campus High School - Town Hall

Tania Cole

Sedgwick County Assistant County Manager

August 1, 2024

Sedgwick County Updates

- Site - MacArthur and Meridian Property
- Building - Design and Construction Timeline





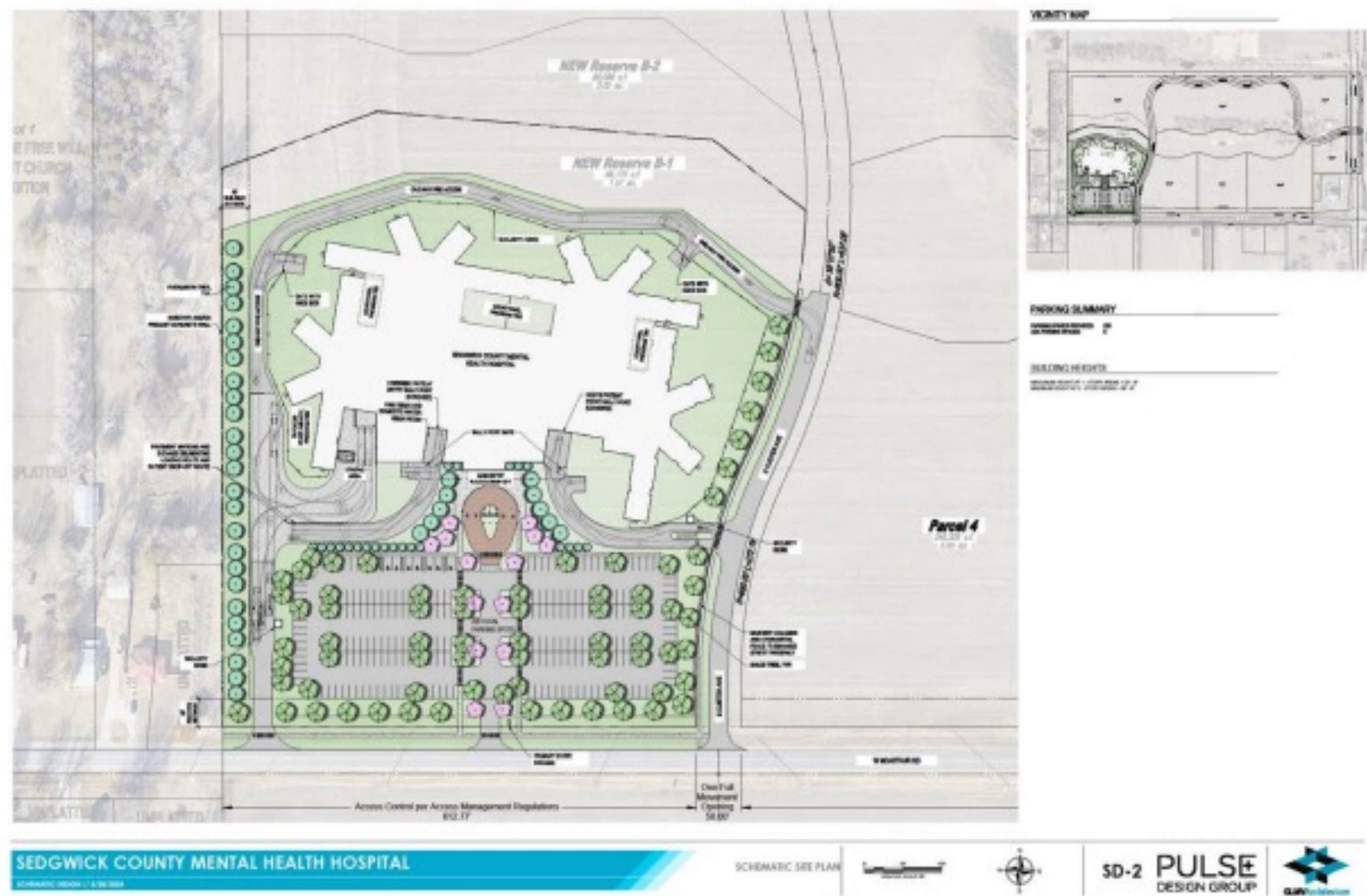
MacArthur and Meridian Property

- 1/26/24 – BoCC approved Sedgwick County staff to move forward with negotiations and discussions with the Lange Community Foundation regarding their rfp (request for proposal) submission of donated property of up to 11 acres at Macarthur and Meridian.
- 2/19/24 - Approval from Governor's Office to proceed with the design for beds to be done in two phases – option to start with the 50 bed.
- 3/28/24 – Approval from Governor to move forward to build full 104 bed design.
- 5/14/24 – Zoning approved by City Council for MH Hospital.
- 5/16/24 – Governor and State Legislature approves additional \$26.5 million SGF to expand to 104 beds.



-
- The site plan illustrates the layout of the State of Kansas Mental Health Hospital, divided into three distinct phases. Phase 1, highlighted in orange, is located on the left side of the plan and contains Lot 1, Block 1. Phase 2, highlighted in green, occupies the central portion and includes Lots 2, 3, 4, and 5, each with associated building footprints and parking areas. Phase 3, highlighted in purple, is situated on the right side and contains Lot 6, Block 1. The plan also shows a parking area adjacent to Phase 3. Surrounding streets include W. MacArthur Rd. to the south, Custer Ave. to the west, and W. 37th St. to the north. A north arrow and a scale bar are provided in the bottom right corner for orientation and measurement.

Macarthur and Meridian Property



Design and Construction Timeline

- Pulse Design Group/Tessere – Architect and Engineering Team
 - Design Development Completed 7/26/24
- Timeline
 - Construction Documents Complete Mid-October 2024
 - Construction Documents out to bid 10/24/24
 - Bids Due to Sedgwick County Purchasing 11/22/24
 - Bid/Contractor Selection 12/5/24 (Bid Board), 12/11/24 (BoCC)
 - Contract Signed 12/19/24
- Construction to begin Feb 2025 and complete Aug 2026 (18 months)



South Central Regional Psychiatric Hospital Project

Scott Brunner

Deputy Secretary – Hospitals and Facilities
Kansas Department for Aging and Disability Services

Regional State Hospital Project

The goal is to build an acute psychiatric hospital to serve adults in mental health crisis.

It is a joint project between Kansas and Sedgwick County to expand access to in-patient hospital care for adults with mental illness.

The proposed State Hospital will be secure facility for 104 adults.

Regional State Hospital – Patient Profile

To be admitted as a patient, an adult must be in mental health crisis and be ordered by a court to receive care and treatment.

Some patients will be ordered by a court to the hospital to have their competency to stand trial evaluated or undergo treatment to have their competency restored.

With 52 beds for acute in-patient care, we expect to serve about 1,000 patients each year.

With 52 beds for competency evaluation or treatment, we expect to serve about 200 people each year.

Regional State Hospital – Why Sedgwick County?

A regional mental health hospital fits the State's strategy to provide care to Kansans closer to home.

The state hospitals in Larned and Osawatomie are the only locations providing involuntary treatment for adults with mental illness. In 2023, almost 10% of involuntary admissions came from Sedgwick County.

COMCARE, Ascension Via Christi, and other community providers in Sedgwick County deliver services to adults in mental health crisis and with acute behavioral health needs. A state hospital has a statutory role in treating individuals who have been determined by a court to need treatment to protect themselves and others.

Sedgwick County has many defendants ordered to Larned State Hospital for competency treatment. In January 2023, 33 inmates in the Sedgwick County Jail (19% of the total waiting) were waiting for treatment Larned. The average wait time in December 2023 was 431 days.

There is more potential for hiring qualified people and building workforce training for healthcare workers in Sedgwick County.

Regional State Hospital – Project Funding

This project was recommended by Governor Kelly in the FY 2023 budget and recommended by the Kansas Legislature. \$15 million is available in FY 2023, FY 2024, and in the FY 2025 approved budget for construction and ongoing operations the hospital

Sedgwick County applied for and has received \$25 million in federal recovery funds for construction costs.

Governor Kelly and the 2024 Legislature approved an additional \$26.5 million to build the full 104 bed design.

Sedgwick County is in the process of acquiring property for the construction and has hired an architectural firm for design and construction documents and the construction contractor. When the building is substantially complete, Sedgwick County will transfer the ownership of the building to the State. The Department for Aging and Disability Services will operate the facility as a state psychiatric hospital.

Key Dates for the Project

March 2023	Signed Memorandum of Understanding between Sedgwick County and KDADS
May 2023	Sedgwick County engaged on-call architects to begin the design
October 2023	Sedgwick County issues request for proposal for buildings or land
November 2023	Proposals due for buildings sites or properties
	Issue request for proposals for Design and Construction Document contractors
December 2023	Award Design Development and Construction Document contract
May 2024	Approve Design Documents
July-October 2024	Approve Construction Documents
October 2024	Issue request for proposals for construction contractor
November 2024	Award construction contracts
January 2024	Begin construction
August 2026	Construction substantially complete
November 2026	Install equipment and furniture, Complete turnover of the building to the State of Kansas
January 2027	Open for admissions

Hospital Advisory Panel

- Governor Kelly issued Executive Order 23-05 on August 28 appointing a 14 member South Central Regional Psychiatric Hospital Advisory Panel.
- The Advisory Panel is charged with gathering public input on needs and location of a regional state psychiatric hospital, including how a state hospital would fit with existing services in Sedgwick County, and researching existing resources, gaps in services and barriers to care to improve access and delivery of services in south central Kansas.
- The Panel also will make recommendations on workforce development needs for the hospital and other service providers, the operating model for the hospital, and statutory changes needed to operate a new hospital.
- The Panel meets monthly in Sedgwick County
- The 14 members include staff from KDADS, Sedgwick County government and law enforcement, mental health and local business stakeholders, and four legislative members.

Where to find more information?

<https://kdads.ks.gov/state-hospitals-and-institutions>

<https://www.sedgwickcounty.org/finance/state-mental-health-hospital/>

Sedgwick County Mental Health Hospital



August 1, 2024

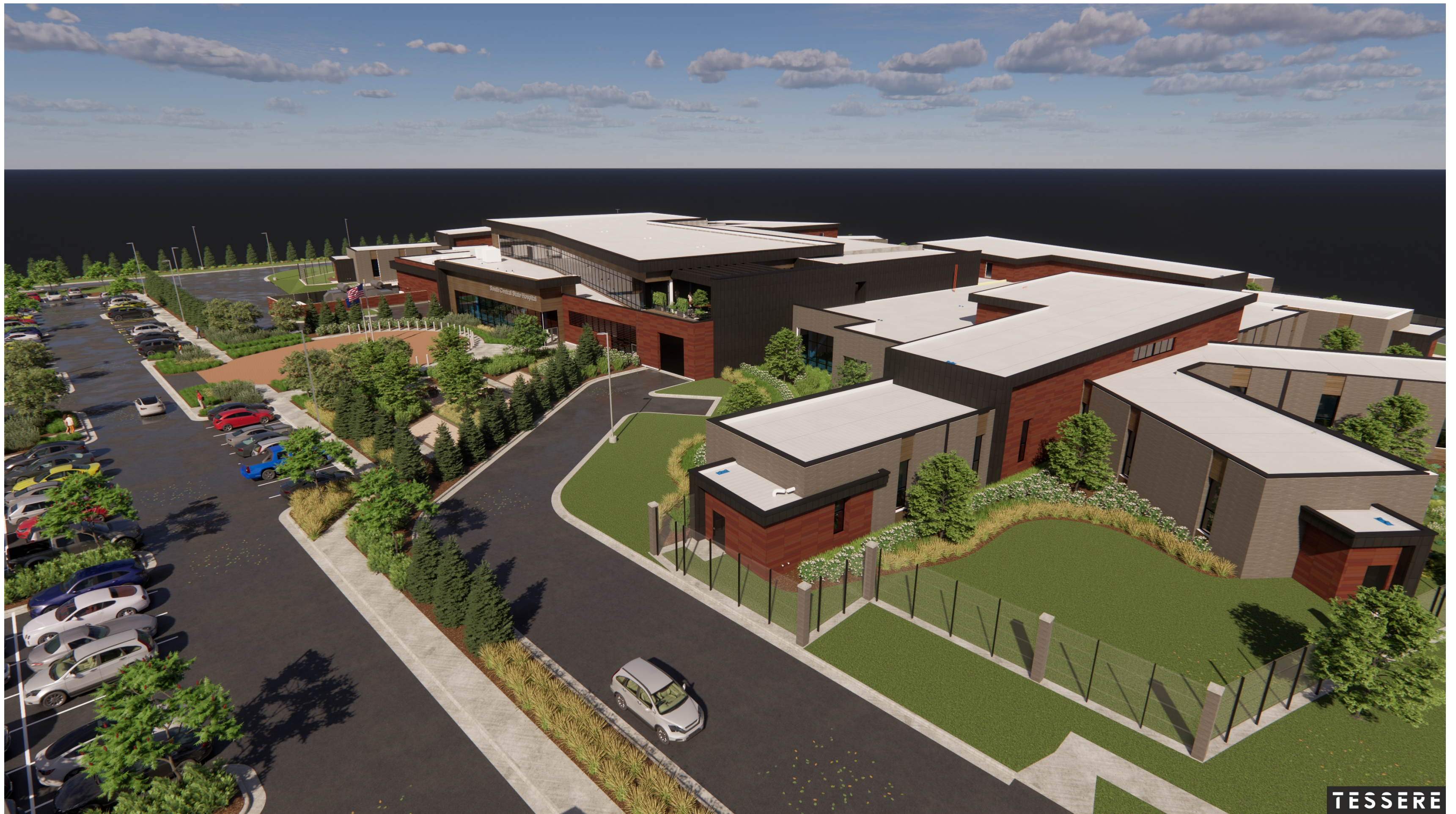
PULSE⁺
DESIGN GROUP

Agenda

- **Site Plan**
- **Exterior Rendering**
- **Overall Floor Plan**
- **Entry/Waiting Room Rendering**
- **Overall Patient Wing**
- **Day Room Rendering**
- **Patient Corridor Rendering**
- **Patient Room Rendering**







EXTERIOR RENDERING – AERIAL VIEW



EXTERIOR RENDERING - FRONT ENTRY





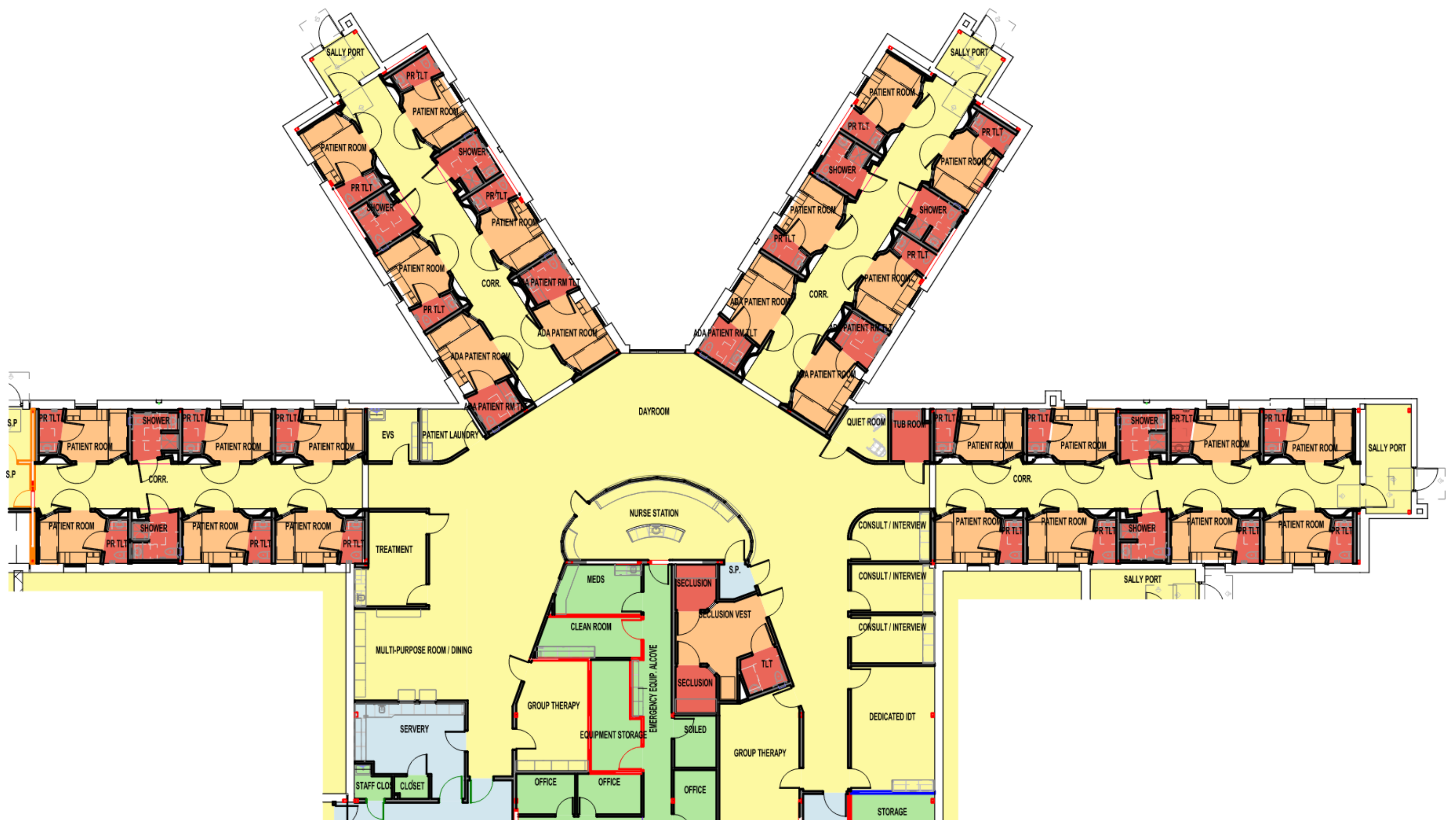
SECURITY LEVEL

- LEVEL 1
- LEVEL 2
- LEVEL 3
- LEVEL 4
- LEVEL 5



OVERALL FLOOR PLAN - LEVEL 2











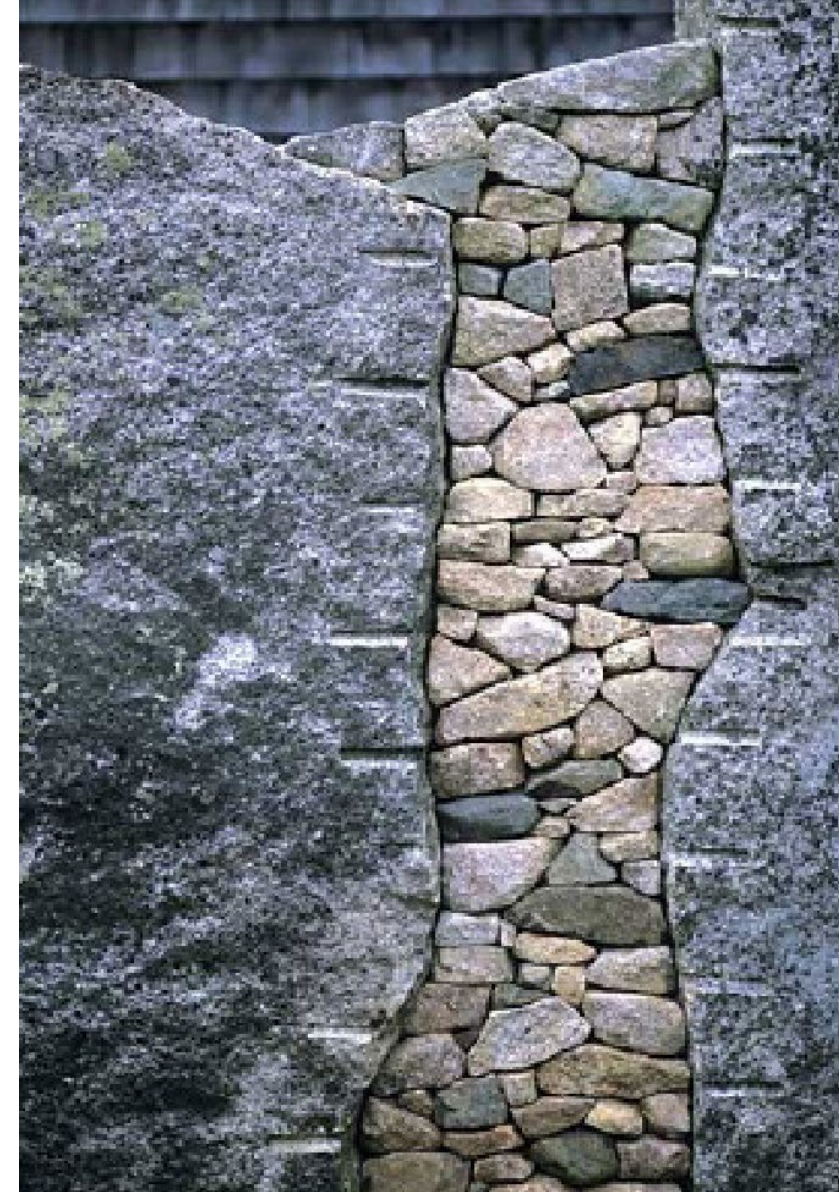






OneRise
HEALTH CAMPUS

MISSION

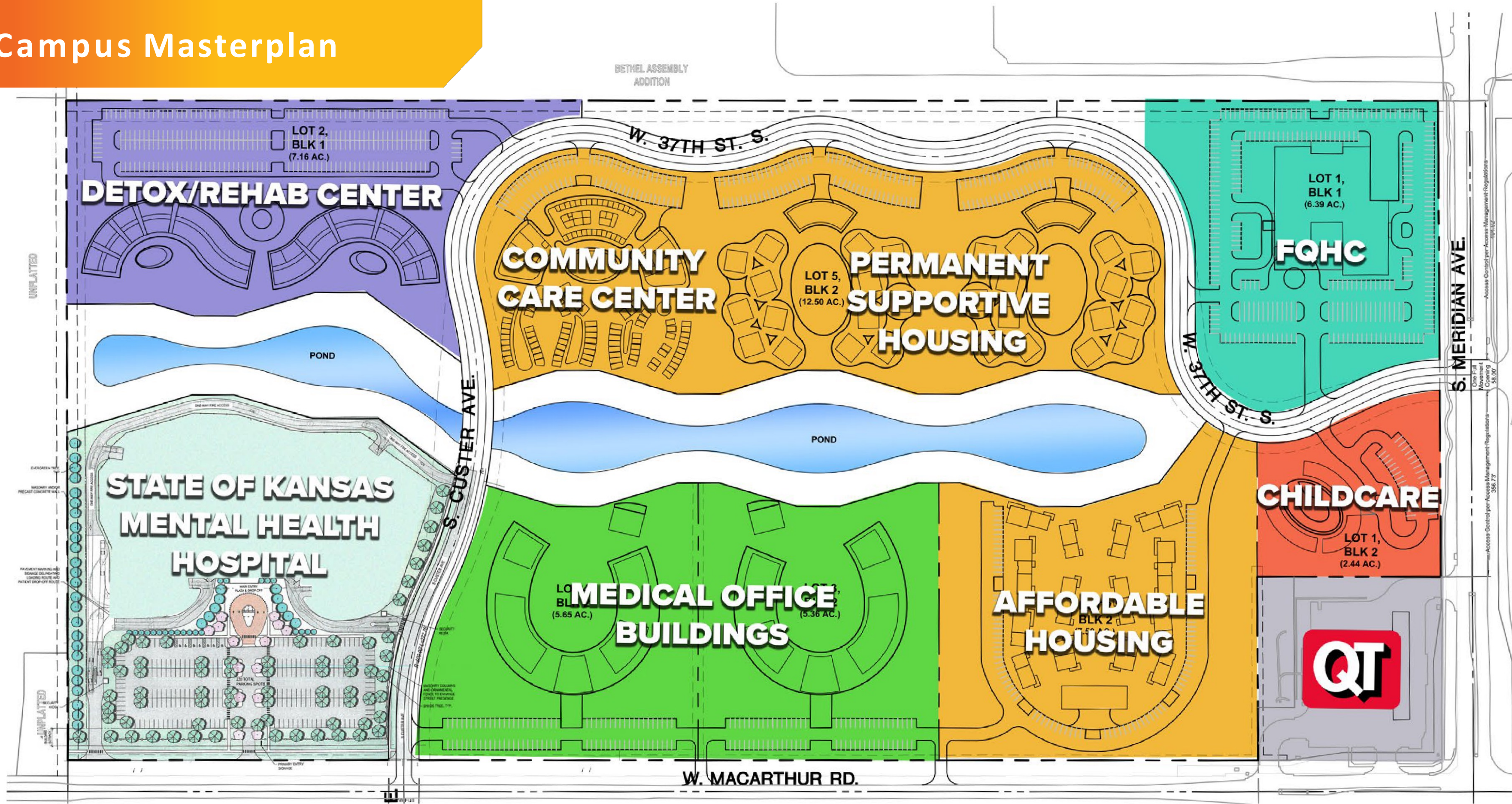


OneRise will serve as an enduring world class precedent of a landscape for **healing** the (body, mind, and soul), **learning**, and **rebuilding** relationships

Park Overview



Campus Masterplan



Connecting to nature through
evidenced based design

Key Takeaways:

- Prioritize direct connection to nature
- Encourage movement
- Offer places of respite
- Diverse vegetation

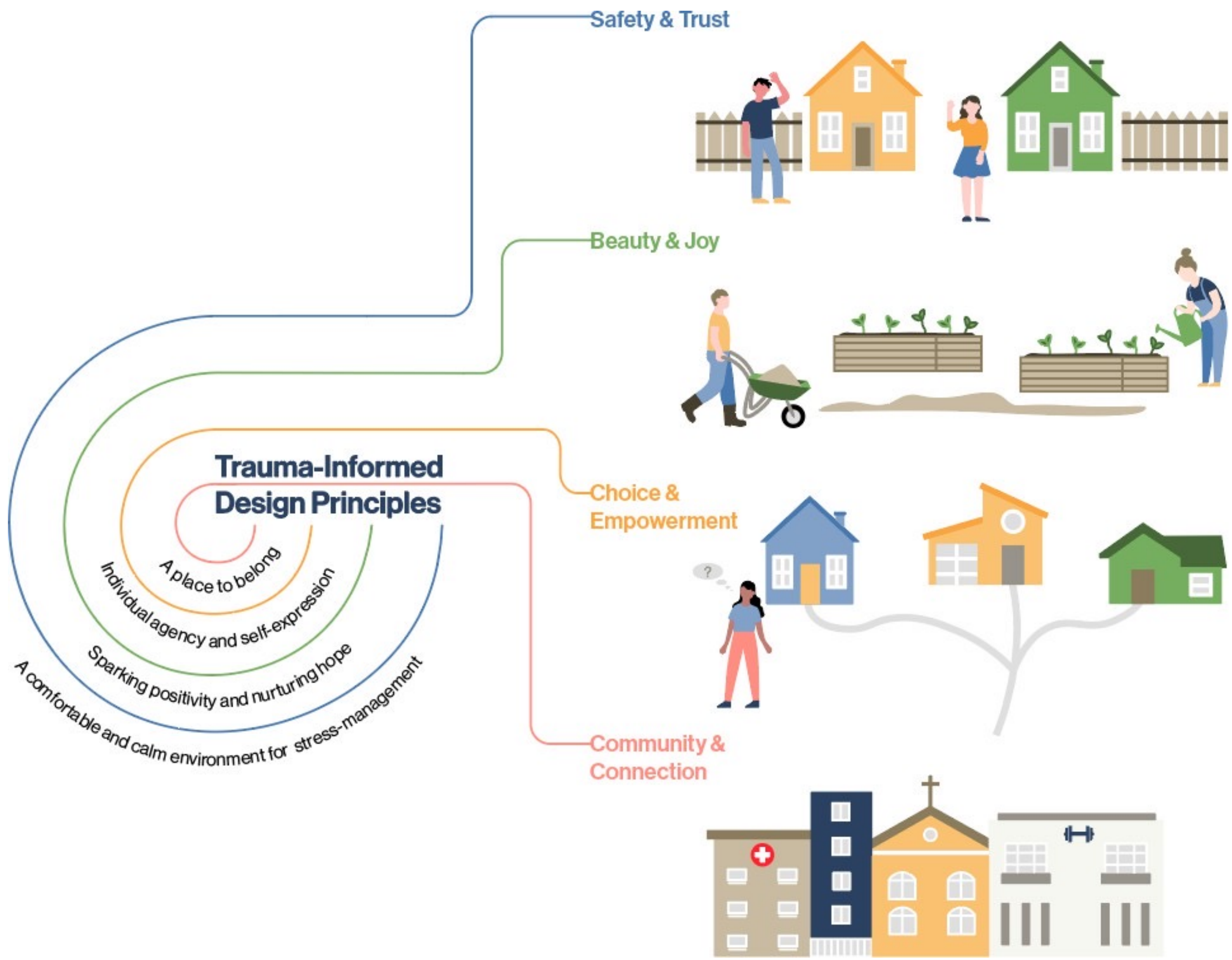
Healing gardens are rooted
deeply in the principles of E.O.
Wilson's biophilic hypothesis
from his work *Biophilia* (1984)
that suggests humans possess
an innate tendency to seek
connections with nature and
other forms of life.

“Research shows that access to physical,
sensual and spiritual interactions with
nature reduces stress and improves health
outcomes.”

- ULRICH

"Nature itself is the best physician."

—Hippocrates



View of CCC Housing From Park



MODERATED Q&A

FEEDBACK SURVEY



<https://surveys.greenbush.org/s3/Sedgwick-County-Town-Hall-August-1-2024>