

# Mosquito Monitoring in Sedgwick County, KS

Last updated:  
4/7/2016

- The Sedgwick County Health Department (SCHD) works with the Kansas Department of Health and Environment (KDHE), the Kansas Health and Environmental Laboratories (KHEL), and the City of Wichita to monitor and combat mosquitoes in Sedgwick County.
- The goals are to identify the types of mosquitoes in Sedgwick County and reduce human disease that is spread by mosquitoes. West Nile virus is the only commonly occurring illness spread by mosquitoes in Sedgwick County.
- You are encouraged to view mosquito trap results on the SCHD website, [www.sedgwickcounty.org](http://www.sedgwickcounty.org).

Sedgwick County mosquito monitoring is described below.

Pictures are provided on page two.

1 Ten mosquito traps are placed in Sedgwick County overnight.

2 Traps are collected the next morning.

3 Mosquitoes are identified by KBS using a microscope.

The mosquito species indicate:

- a. What environment the mosquito lives and breeds in.
  - For example, floodwater mosquitoes appear after a large rain.
- b. Whether the mosquito is known to carry a virus that can make people sick.
  - For example, *Culex* species are known to carry West Nile virus.

4 *Culex* species mosquitoes are tested for the presence of West Nile virus by KHEL.

5 All mosquito data is analyzed and interpreted to determine the need for mosquito control efforts by KBS.

6 Mosquito trap results are graphed and available on the SCHD and KDHE websites.

- [www.sedgwickcounty.org](http://www.sedgwickcounty.org)
- [www.kdheks.gov/epi/arboviral\\_disease.htm](http://www.kdheks.gov/epi/arboviral_disease.htm)

7 Mosquito trap results guide SCHD and City of Wichita in mosquito control efforts. High numbers of *Culex* species mosquitoes will dictate the location where mosquito dunks are applied.

- a. **Mosquito dunks** are a product that kill mosquito larvae. The dunks are non-toxic to all other wildlife, pets, fish, and humans. Dunks are available at home improvement, hardware, and lawn and garden stores.
- b. **Eliminating mosquito larvae** is one of the most effective ways to reduce adult biting mosquitoes.

8 SCHD works with health partners in Sedgwick County to communicate information about increases in mosquitoes and how to protect from mosquito bites and human illness.

Remember the three Ds:

**DRAIN** Eliminate all standing water; mosquitoes breed there. Change water in wading pools, pet dishes and bird baths several times per week. Use mosquito dunks or mosquito-eating fish in ponds.

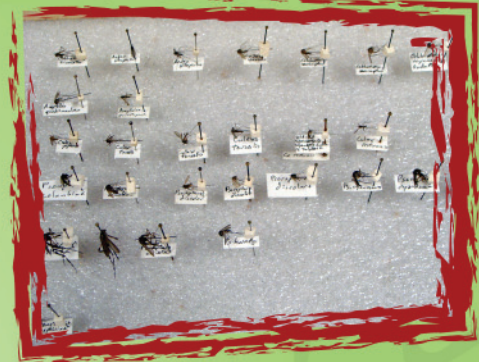
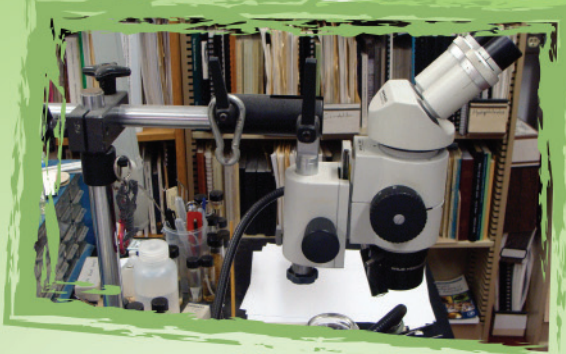
**DRESS** Cover your skin with clothing when outdoors, especially at dawn and dusk.

**DEET** Use insect repellents that contain DEET. Follow product label directions.

Mosquito traps are placed in Sedgwick County to monitor the **number and types of mosquitoes** present in the county.



Mosquitoes in the traps are identified by the **Kansas Department of Health & Environment** using a microscope.



All *Culex* species mosquitoes found in the traps are tested for **West Nile virus** by the Kansas Health and Environmental Laboratories.



*Sedgwick County...  
working for you*

**Sedgwick County Health Department**

[www.sedgwickcounty.org](http://www.sedgwickcounty.org)

**316-660-7300**