

INTRUST Bank Arena

Mission: INTRUST Bank Arena is a modern, first-class sports and entertainment venue owned by Sedgwick County and operated by ASM Global, providing 15,000 seats for basketball games. INTRUST Bank Arena is home to indoor sporting events, concerts, family shows, and other entertainment.

Lindsay Poe Rousseau
Chief Financial Officer

100 N. Broadway St., Suite 610
Wichita, KS 67202
316.660.7591

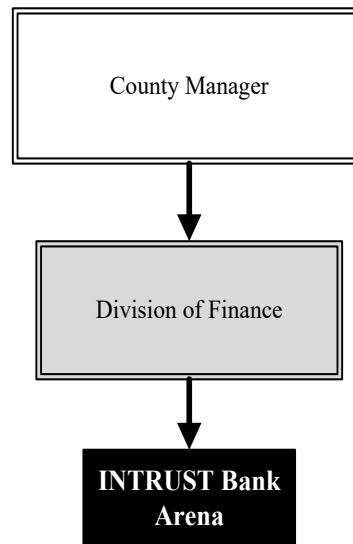
lindsay.poerousseau@sedgwick.gov

Overview

INTRUST Bank Arena is a modern, state-of-the-art sports and entertainment venue, perfect for concerts and conventions alike. Located in the heart of downtown Wichita with restaurants, shops, and eclectic entertainment options nearby, INTRUST Bank Arena is a premier arena in the Midwest.

Construction costs were funded without debt from the proceeds of a special one-percent county sales tax approved by voters in 2004. This allowed for the Arena to be constructed while the revenue was collected, eliminating the need for bonds to finance the project and saving about \$112.0 million in interest. Arena sales tax revenues exceeded projections and totaled \$206.5 million, resulting in a reserve of \$15.9 million for major repair and capital equipment purchases.

ASM Global manages the facility.



Strategic Goals:

- Continue to provide quality entertainment for the citizens of Sedgwick County

Highlights

- INTRUST Bank Arena was a 2023 International Association of Venue Managers (IAVM) Venue Excellence Award Winner. It is the only venue to win this award three times, also winning the award in 2013 and 2018
- In 2022, the County and ASM Global amended the terms of the December 2019 management agreement. This amendment extended the term through 2032, with automatic renewal if certain operating income is generated over the term. Per the profit sharing terms, the County received \$128,572 in operating income for 2024



Accomplishments and Strategic Results

Accomplishments

ASM Global pursues every act that is planning to tour arenas and continues work to secure a diverse group of acts at INTRUST Bank Arena. Events for 2025 include:

- NCAA Division I Men's Basketball Championship Rounds 1 and 2
- US Figure Skating Championships
- Cirque du Soleil OVO
- Winter Jam
- Dancing with the Stars: Live!
- Harlem Globetrotters
- PBR Velocity Tour
- Monster Jam
- Disney on Ice
- Kid Rock
- Alabama
- AEW Collision
- 2025 PFL World Tournament 7: Semifinals
- Dude Perfect
- Creed
- Nate Bargatze

Strategic Results

In 2024, a total of 74 events were hosted at INTRUST Bank Arena, including nine concerts, four family shows, six sporting events, and 14 local events. Wichita Thunder hockey hosted 42 events.

- Total attendance for 2024 was 249,824
- Net operating income to the County was \$128,572
- Facility fee revenue generated toward capital improvement program (CIP) projects was \$193,885.50, which will be matched by Sedgwick County in the 2025 budget year

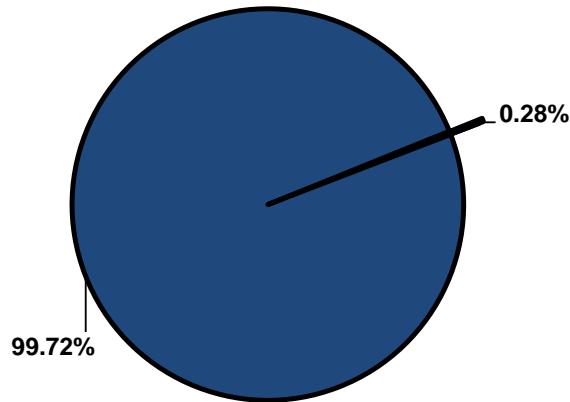


Significant Budget Adjustments

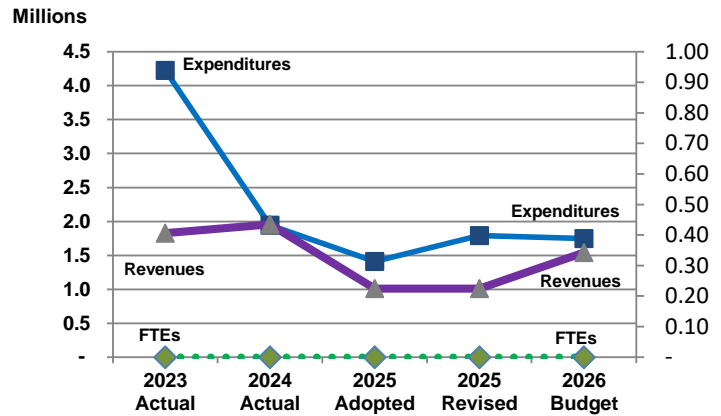
Significant adjustments to INTRUST Bank Arena's 2026 Recommended Budget include an increase in charges for service revenue (\$533,047) due to facility fee payment match, a decrease in expenditures (\$128,889) due to completed CIP projects in 2025, and an increase in contractuals (\$85,000) to bring in-line with anticipated actuals.

Departmental Graphical Summary

INTRUST Bank Arena
Percent of Total County Operating Budget



Expenditures, Program Revenue & FTEs
All Operating Funds



Budget Summary by Category

	2023 Actual	2024 Actual	2025 Adopted	2025 Revised	2026 Budget	Amount Chg '25 Rev.-'26	% Chg '25 Rev.-'26
Expenditures							
Personnel	-	-	-	-	-	-	-
Contractual Services	543,334	448,596	590,000	590,000	675,000	85,000	14.41%
Debt Service	-	-	-	-	-	-	-
Commodities	-	-	-	-	-	-	-
Capital Improvements	3,682,945	1,497,371	820,000	1,203,889	1,075,000	(128,889)	-10.71%
Capital Equipment	-	-	-	-	-	-	-
Interfund Transfers	-	-	-	-	-	-	-
Total Expenditures	4,226,279	1,945,967	1,410,000	1,793,889	1,750,000	(43,889)	-2.45%
Revenues							
Tax Revenues	-	-	-	-	-	-	-
Licenses and Permits	-	-	-	-	-	-	-
Intergovernmental	-	-	-	-	-	-	-
Charges for Services	1,567,499	1,486,737	710,000	710,000	1,243,047	533,047	75.08%
All Other Revenue	259,079	470,224	300,000	300,000	300,000	-	0.00%
Total Revenues	1,826,577	1,956,961	1,010,000	1,010,000	1,543,047	533,047	52.78%
Full-Time Equivalents (FTEs)							
Property Tax Funded	-	-	-	-	-	-	-
Non-Property Tax Funded	-	-	-	-	-	-	-
Total FTEs	-	-	-	-	-	-	-

Budget Summary by Fund

	2023 Actual	2024 Actual	2025 Adopted	2025 Revised	2026 Budget	Amount Chg '25 Rev.-'26	% Chg '25 Rev.-'26
Fund							
INTRUST Bank Arena	4,226,279	1,945,967	1,410,000	1,793,889	1,750,000	(43,889)	-2.45%
Total Expenditures	4,226,279	1,945,967	1,410,000	1,793,889	1,750,000	(43,889)	-2.45%

Significant Budget Adjustments from Prior Year Revised Budget

	Expenditures	Revenues	FTEs
Increase in charges for service revenue due to facility fee payment match		533,047	
Decrease in expenditures due to completed CIP projects in 2025	(128,889)		
Increase in contractals to bring in-line with anticipated actuals	85,000		
Total	(43,889)	533,047	-

Budget Summary by Program

Program	Fund	2023 Actual	2024 Actual	2025 Adopted	2025 Revised	2026 Budget	% Chg '25 Rev.-'26	25-'26' FTEs
Arena Operations	550	1,077,996	589,861	590,000	667,889	675,000	1.06%	-
Arena Capital Improvem.	550	3,148,283	1,356,106	820,000	1,126,000	1,075,000	-4.53%	-
Total		4,226,279	1,945,967	1,410,000	1,793,889	1,750,000	-2.45%	-

• Arena Operations

Senate Bill 58, signed on April 4, 2005 by the then Governor Kathleen Sebelius, authorized Sedgwick County to collect a one-percent sales tax for a period of 30 months beginning July 1, 2005. The proceeds for this tax were specifically designated for the construction of an arena in the downtown area of Wichita, renovations to the Kansas Pavilions, and an operating/maintenance reserve for the INTRUST Bank Arena and the Kansas Pavilions. The Arena Operations fund center is budgeted for operation and maintenance expenditures for the INTRUST Bank Arena.

Fund(s): Arena Tax Fund 550

Expenditures	2023 Actual	2024 Actual	2025 Adopted	2025 Revised	2026 Budget	Amnt. Chg. '25 - '26	% Chg. '25 - '26
Personnel	-	-	-	-	-	-	0.0%
Contractual Services	543,334	448,596	590,000	590,000	675,000	85,000	14.4%
Debt Service	-	-	-	-	-	-	0.0%
Commodities	-	-	-	-	-	-	0.0%
Capital Improvements	534,662	141,265	-	77,889	-	(77,889)	-100.0%
Capital Equipment	-	-	-	-	-	-	0.0%
Interfund Transfers	-	-	-	-	-	-	0.0%
Total Expenditures	1,077,996	589,861	590,000	667,889	675,000	7,111	1.1%
Revenues							
Taxes	-	-	-	-	-	-	0.0%
Intergovernmental	-	-	-	-	-	-	0.0%
Charges For Service	1,308,420	1,181,040	590,000	590,000	925,000	335,000	56.8%
All Other Revenue	-	15,500	-	-	-	-	0.0%
Total Revenues	1,308,420	1,196,540	590,000	590,000	925,000	335,000	56.8%
Full-Time Equivalents (FTEs)	-	-	-	-	-	-	0.0%

• Arena Capital Improvements

Senate Bill 58, signed on April 4, 2005 by the then Governor Kathleen Sebelius, authorized Sedgwick County to collect a one-percent sales tax for a period of 30 months beginning July 1, 2005. The proceeds for this tax were specifically designated for the construction of an arena in the downtown area of Wichita, renovations to the Kansas Pavilions, and an operating/maintenance reserve for the INTRUST Bank Arena and the Kansas Pavilions. The Arena Capital Improvement fund center is budgeted for INTRUST Bank Arena capital projects.

Fund(s): Arena Tax Fund 550

Expenditures	2023 Actual	2024 Actual	2025 Adopted	2025 Revised	2026 Budget	Amnt. Chg. '25 - '26	% Chg. '25 - '26
Personnel	-	-	-	-	-	-	0.0%
Contractual Services	-	-	-	-	-	-	0.0%
Debt Service	-	-	-	-	-	-	0.0%
Commodities	-	-	-	-	-	-	0.0%
Capital Improvements	3,148,283	1,356,106	820,000	1,126,000	1,075,000	(51,000)	-4.5%
Capital Equipment	-	-	-	-	-	-	0.0%
Interfund Transfers	-	-	-	-	-	-	0.0%
Total Expenditures	3,148,283	1,356,106	820,000	1,126,000	1,075,000	(51,000)	-4.5%
Revenues							
Taxes	-	-	-	-	-	-	0.0%
Intergovernmental	-	-	-	-	-	-	0.0%
Charges For Service	259,079	305,697	120,000	120,000	318,047	198,047	165.0%
All Other Revenue	259,079	454,724	300,000	300,000	300,000	-	0.0%
Total Revenues	518,157	760,421	420,000	420,000	618,047	198,047	47.2%
Full-Time Equivalents (FTEs)	-	-	-	-	-	-	0.0%