



MABCD CONSTRUCTION INDUSTRY NEWSLETTER

Issue 52—September 2025

<https://www.sedgwickcounty.org/mabcd/mabcd-newsletter/>

Chris Nordick - Editor

Get all of your latest MABCD news each month right here with the MABCD newsletter

Administration -

Renewals for Trade Licenses and Trade Certificates begins on September 1st.

Replacing 'Walk-in Thursdays,' Trade Certificate holders and Trade Contractors will have the option to renew online through the Dynamic Portal.

This convenient process allows you to upload required documents and submit your renewal electronically. When notified that the license and/or certificate is ready for payment, Trade Contractors and Trade Certificate holders will be able to make the payment through the Dynamic Portal as well.

To participate, we must have a valid email address on file.

If you have not already provided one, please email MABCD@sedgwick.gov with the subject line **"Online Certificate Renewal – Email"** and include your name, certificate number(s), and preferred email address.

Full instructions are available on our website at www.sedgwickcounty.org/MABCD

Inside this issue

Administration	1
Building Division	2
Electrical Division	3
Mechanical Division	4
Plumbing Division	5
Plans Examiners Office	9
WFD	10
MABCD Advisory Boards	11

Special points of interest

- Trade License and Certificate Renewal.
- Gable Bracing.
- Trade Certificate Renewal. (Penalty Hours).
- Refrigerant Piping Installation.
- Using GIS for Plumbing Infrastructure.
- CO Alarms required in Commercial Properties.
- Ceiling Tiles and Ceiling Assemblies .
- Advisory Board calendar.

Building Division

GABLE BRACING

Gable Bracing

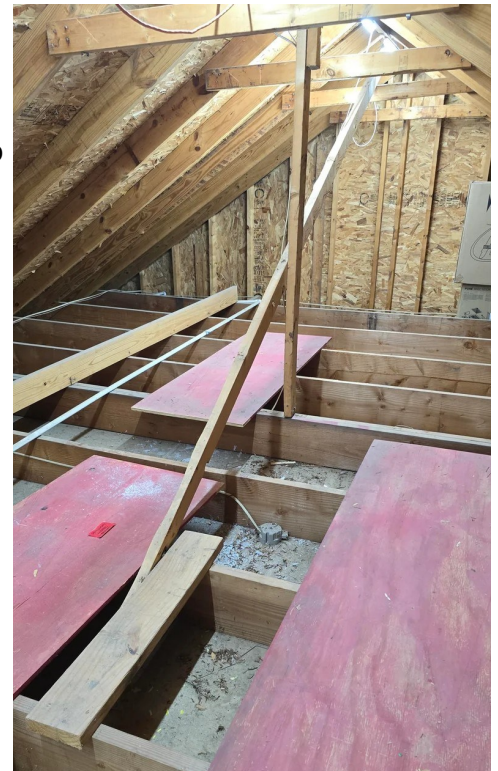
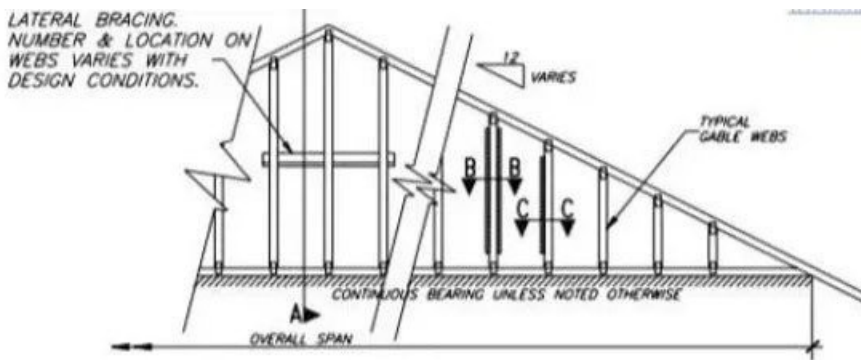
Bracing a gable end is a critical construction practice that provides structural stability to the triangular wall at the end of a roof.

The gable wall acts similar to a sail and is highly vulnerable to wind pressure, which can cause significant damage or even collapse in high-winds.

Effective gable bracing involves creating a stronger connection between the gable wall, the ceiling, and the roof structure to distribute wind forces across a larger area.

In residential construction; L Bracing and Diagonal Bracing are common ways to brace a gable. L Bracing is connecting two 2x4's to form the letter "L" and securing it midway up and across the gable, inside the attic. Diagonal Bracing is securing one end of a 2x4 to the top of gable and running it diagonally down to the ceiling joist.

For further details, refer to your provided gable truss engineering or consult with your truss manufacturer.



Electrical Division -

Please visit our website for more information: [Electrical, Elevator, & Alarm Division](#)

Renewing Electrical, Elevator and Alarm Certifications

Trade Certificate renewal starts September 1, 2025.

Here are some things that you need to consider when submitting for renewal:

Penalty hours will be assessed for anyone who did not renew during a previous cycle, and for those who do not renew prior to April 1st. The penalty hours shall be in addition to the required hours for each cycle.

Expired Certificates

Additional CEU hours will be required if the trades person allows their certificate to expire. The table below shows the additional hours and actions if the certificate expires.

Certificate Renewal After Expiration	Additional Hours Above Required Hours
January 1 through March 31	No penalty hours required (Grace Period)
April 1 through June 30	1.5 hours
July 1 through August 31	3 hours
September 1 through December 31	4.5 hours
After December 31	See Section Chief

What this means is, The Chief has the Authority to assess penalties for each cycle you are behind. If you are one cycle behind, you will be required to provide 12 CEU's for the previous cycle, 12 CEU's for the current cycle, and 4.5 penalty hours for allowing it to become expired. In this same scenario, if you do not renew until after April 1, you will be assessed an additional 1.5 hours. If after Dec 31st you will be assessed 6 penalty hours.

12 hours from previous cycle + penalty hours for being expired + 12 hours for the new cycle + any penalty hours you are late for this cycle.

Mechanical Division -

Please visit our website for more information: [Mechanical Division](#)

2024 IMC – Refrigerant Piping Installation—Prohibited Locations

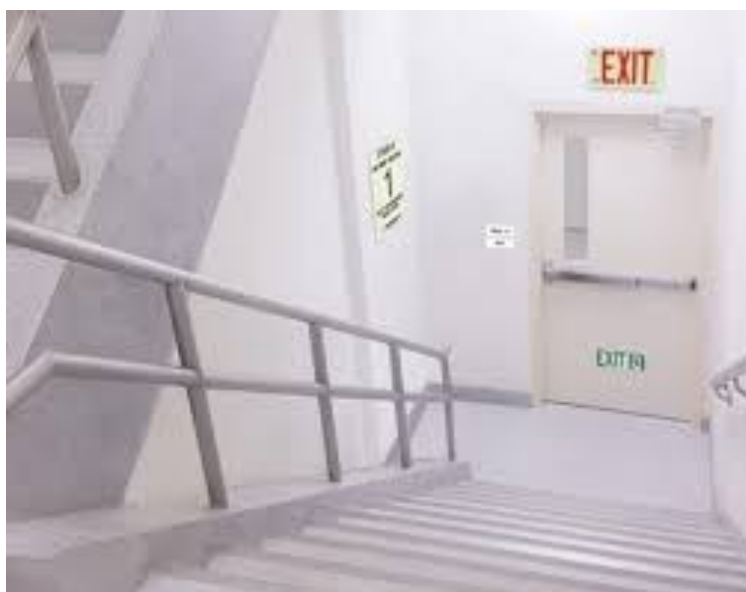
The location of refrigeration piping is controlled to mitigate the potential hazards of leakage. The location requirements and limitations are based on the toxicity and flammability of the refrigerant in the piping.

Refrigerant piping must be protected from damage by enclosing it in the building structure or in enclosures built for that purpose. The code intends to prohibit refrigerant piping in exit stairways, exit ramps, exit passageways and fire-resistance-rated exit access corridors. A refrigerant leak in such spaces could jeopardize egress from the building.

2024 IMC section # 1109.3 **Prohibited locations.** Refrigerant piping shall not be installed in any of the following locations:

1. Exposed within a fire-resistance-rated exit access corridor.
2. Exposed within an interior exit stairway.
3. Within an interior exit ramp.
4. Within an exit passageway.
5. Within an elevator, dumbwaiter, or other shafts containing a moving object.

Change summary: The language was changed to allow protected refrigerant piping within an exit stairway.



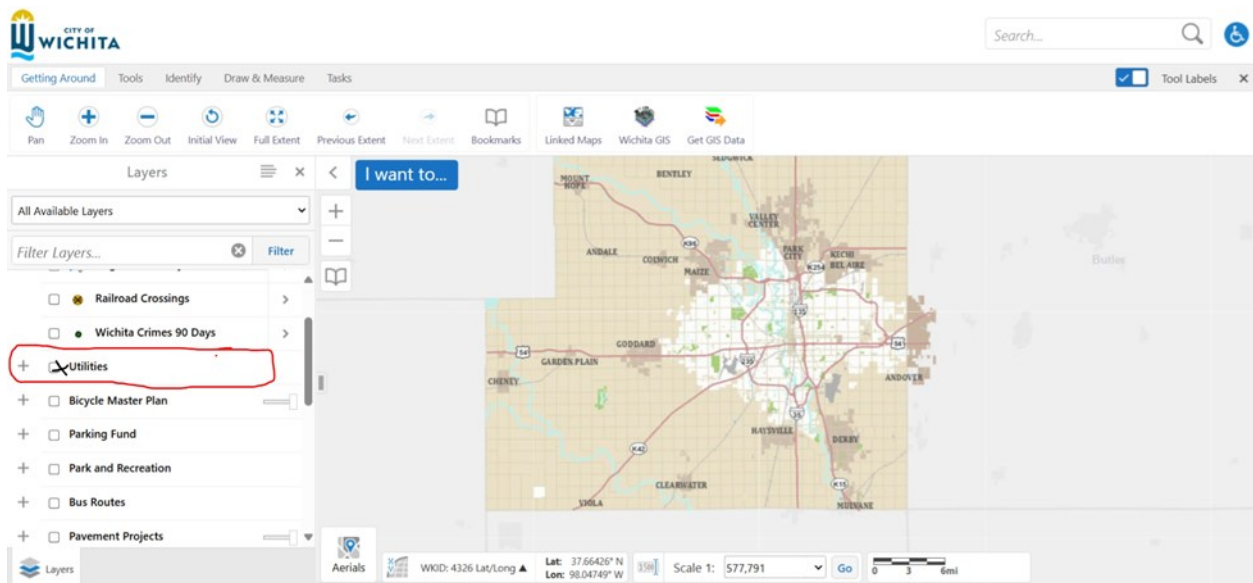
Plumbing Division -

Please visit our website for more information: [Plumbing Division](#)

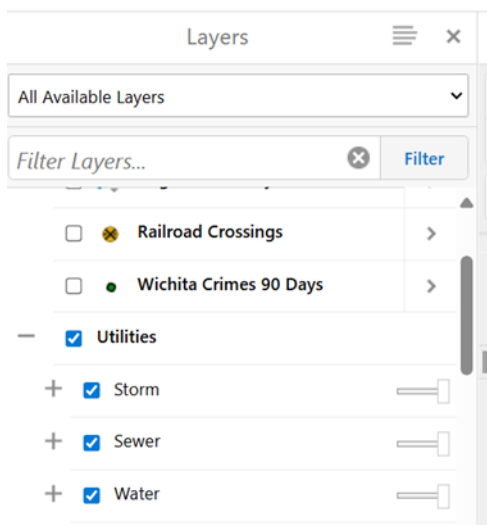
Using the City of Wichita GIS for: Location of Water Mains, Sanitary Sewer Mains and Storm Water Drainage

The City of Wichita has a Geographic Information System (GIS) website where plumbers and drain layers can view maps with infrastructure such as water mains, sanitary sewer mains and storm water drainage mains and structures. Click on the link below to go to the website.

gismaps.wichita.gov



Click on the plus sign and check the box at the word UTILITIES to open more filter selections. Check all three boxes for STORM, SEWER and WATER.

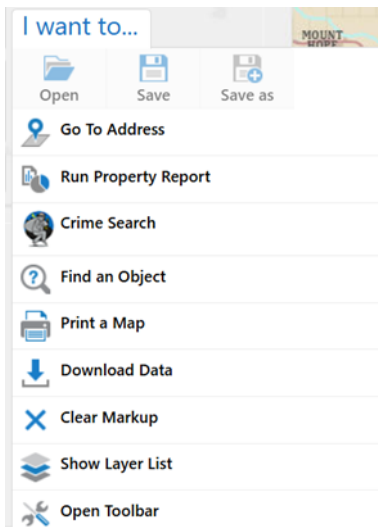


Plumbing Division -

Please visit our website for more information: [Plumbing Division](#)

Using the City of Wichita GIS for: Location of Water Mains, Sanitary Sewer Mains and Storm Water Drainage—*continued*

Click on the blue I WANT TO... button and select GO TO ADDRESS by clicking on it.



Enter an address in the dialog box and then click on the SEARCH button to view a map of the area around the address complete with storm sewer, sanitary sewer and water mains.

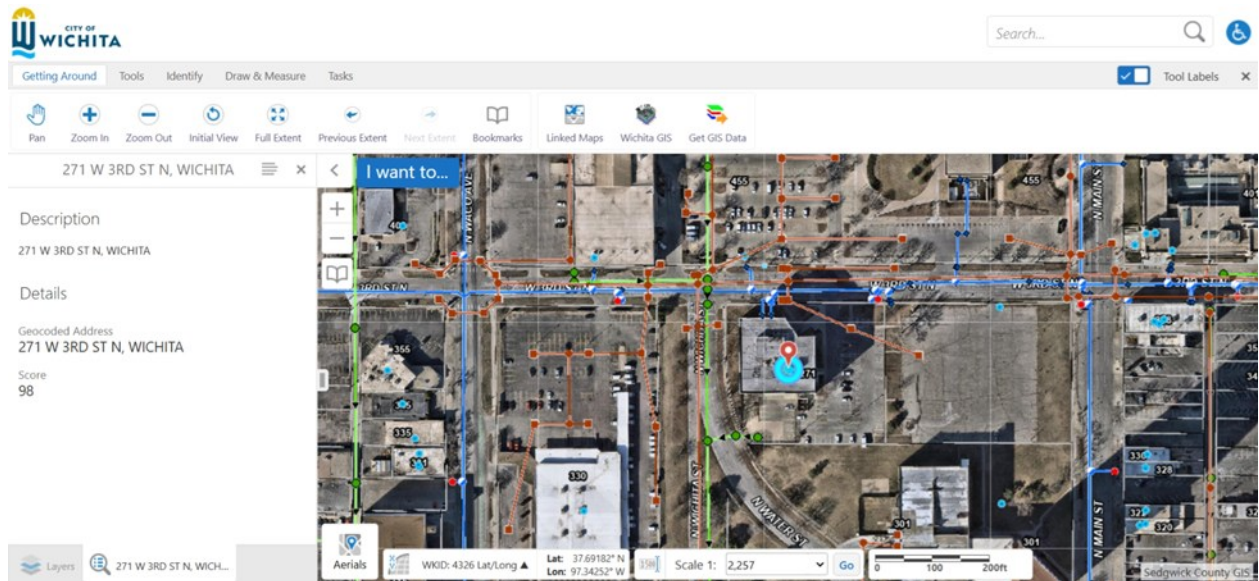
The map will only show the mains. Private lines such as the private water services from the meter to the building are not shown. The sanitary sewer laterals from the main to the building are not shown. When an underground main pipe must be located the contractor or homeowner must contact DIGSAFE at 811. When a private line must be located the contractor or homeowner must call upon the services of a line-locating contractor.

Private lines from the meter or main to the building are not located by MABCD.

Plumbing Division -

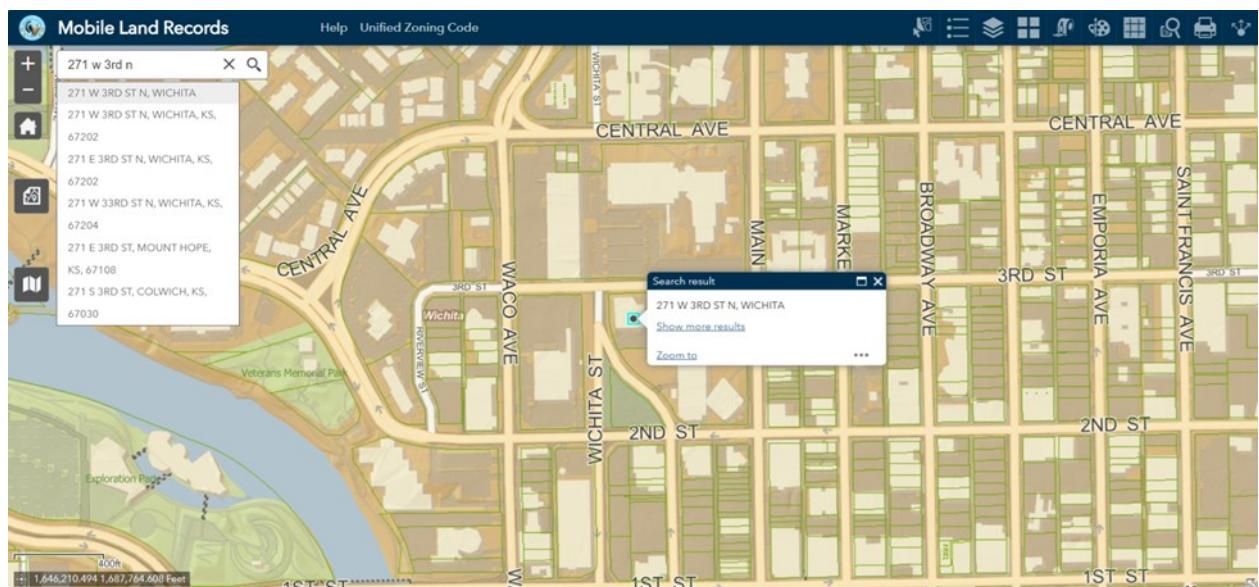
Please visit our website for more information: [Plumbing Division](#)

Using the City of Wichita GIS for: Location of Water Mains, Sanitary Sewer Mains and Storm Water Drainage—continued



Sedgwick County has a GIS website also. You may click on this link to go to the website

[Mobile Land Records](#)



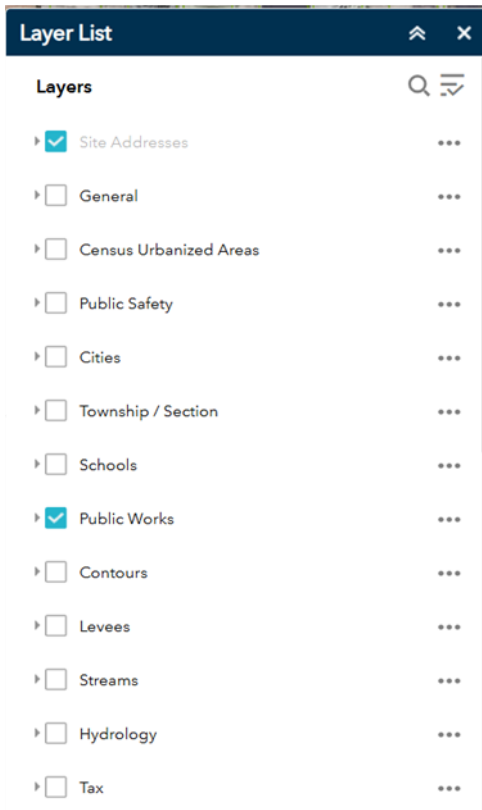
Enter an address in the dialog box and click on the magnifying glass icon to view a map of the area around the address.

Open the LAYER LIST to select the information that you would like to see on your custom map.

Plumbing Division -

Please visit our website for more information: [Plumbing Division](#)

Using the City of Wichita GIS for: Location of Water Mains, Sanitary Sewer Mains and Storm Water Drainage—*continued*



Please contact me if you have any questions about the plumbing infrastructure available on the GIS map systems.

Jason Little

Chief Plumbing Inspector

Metropolitan Area Building and Construction Department

271 W. Third St. N. suite 308

Wichita KS, 67202

Office 316-660-1717

Cell 316-871-4602

Jason.Little@Sedgwick.gov

Plans Examiners Office -

2024 International Building Code

Section No. 915.1 and 915.1.1 of the 2024 Edition of the International Building Code requires carbon monoxide (CO) detection in all new buildings and existing buildings when following conditions exist.

1. In buildings that contain a CO source.
2. In buildings that contain or are supplied by a CO-producing forced-air furnace.
3. In buildings with attached private garages.
4. In buildings that have a CO-producing vehicle that is used within the building.

The carbon monoxide detection shall be installed in existing buildings in accordance with Chapter 11 of the 2024 Edition of the International Fire Code. Section 202 of the 2024 Edition of the International Building Code defines carbon monoxide source as a piece of commonly used equipment or permanently installed appliance, fireplace or process that produces or emits carbon monoxide gas. This definition clarifies that only permanently installed or used sources in a building, such as gas-fueled heaters, ranges, stoves, ovens, dryers or propane-powered fork-lifts that are part of the daily operations of a space are included, and that things like candles and floor polishers are not intended to be included.

Wichita Fire Department -

Ceiling Tiles and Ceiling Assemblies

NFPA 13

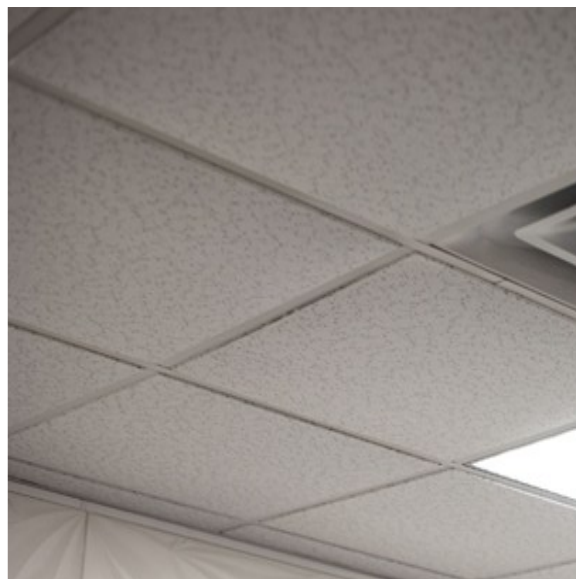
Although there are many different ceiling tiles used by many businesses, they all have one theme in common.

The common theme is they must always be in place...

NFPA 1-13.3 3.3 Ceiling Tiles and Ceiling Assemblies – “Where automatic sprinklers are installed, ceilings necessary for the proper actuation of the fire protection device in accordance with NFPA 13 shall be maintained.

Please remember... it IS a deficiency if the total area of openings in a ceiling exceeds 20% or if openings longer than 4 feet are wider than 8 inches.

Stay safe and keep ceiling tiles in place



MABCD Advisory Boards - Calendar

- [Board of Building Code Standards and Appeals \(BCSA\)](#)
- [Board of Electrical Appeals \(BEA\)](#)
- [Board of Appeals of Refrigeration, Air Conditioning, Warm Air Heating, and Boiler](#)
- [Board of Appeals of Plumbers and Gas Fitters](#)

September 2025

Sun**Mon****Tue****Wed****Thu****Fri****Sat**

	<i>1</i>	<i>2</i>	<i>3</i>	<i>4</i> MABCD Mechanical Board Meeting	<i>5</i>	<i>6</i>
<i>7</i>	<i>8</i> MABCD BCSA Board Meeting	<i>9</i> MABCD Electrical Board Meeting	<i>10</i>	<i>11</i>	<i>12</i>	<i>13</i>
<i>14</i>	<i>15</i>	<i>16</i>	<i>17</i>	<i>18</i>	<i>19</i>	<i>20</i>
<i>21</i>	<i>22</i>	<i>23</i>	<i>24</i> MABCD Plumbing Board Meeting	<i>25</i>	<i>26</i>	<i>27</i>
<i>28</i>	<i>29</i>	<i>30</i>				