

Community Health Improvement Plan (CHIP) Development Meeting

October 14, 2025



SEDGWICK COUNTY
Health Department



Welcome

9:00 – 9:10 AM

Chris Steward, MPH
Deputy Health Director
Sedgwick County Health Department



SEDGWICK COUNTY
Health Department



Welcome

Meeting Objectives and Participant Packets

Chris Steward, MPH
Sedgwick County Health Department



SEDGWICK COUNTY
Health Department



Meeting Objectives

- Understand the Sedgwick County Community Health Improvement Cycle and Process
- Learn Sedgwick County data trends for 15 health issues
- Select 3-5 health issues for the 2026-2028 CHIP



SEDGWICK COUNTY
Health Department



Agenda

- Setting the Stage: Where Are We Now?
- Morning Break
- Exploring Data Walk Posters
- Charting the Path Forward – Designing the New CHIP
- Selecting the 2026 CHIP Health Issues
 - Introduction
 - Table Work
 - Large Group Voting
- Closing



SEDGWICK COUNTY
Health Department



Participant Packets

- **Agenda**
 - Page 2 is **Priority Survey Results**
- **CHIP Summary** Booklet (use at 9:10 am)
- Yellow Document is **Data Walk Notes** (use after morning break)
- Green Document is **Group Discussion Notes** (use after lunch)
- **MAPP notebook**



SEDGWICK COUNTY
Health Department



Table Resources

- **Table Tent** shows Table Number and Ground Rules
- **Community Health Improvement Plan Cycle**
- **Relationship Matrix Guide**
 - Page 2 is **Health Issues Selection Criteria**
- **Note cards** (complete at 1:50 pm)
- **Evaluation QR code** (complete at 1:50 pm)



SEDGWICK COUNTY
Health Department



Setting the Stage: Where Are We Now?

9:10 – 10:00 AM



Setting the Stage: Where Are We Now?

2023-25 Community Health Improvement Cycle and Process

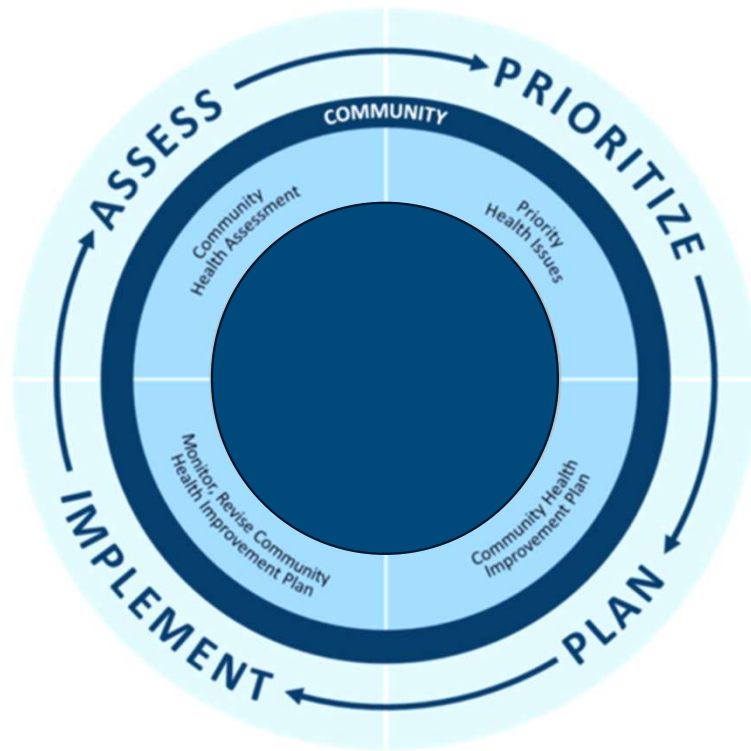
Trisha Wile, MBA
Community Health and Outreach Manager
Sedgwick County Health Department



SEDGWICK COUNTY
Health Department



Community Health Improvement Cycle



Through data, strategic collaborations, and community power and engagement, we improve the community's health.

- Assess the community's health with the Community Health Assessment (CHA)
- Prioritize health issues
- Plan the goals for the Community Health Improvement Plan (CHIP)
- Implement the CHIP



SEDGWICK COUNTY
Health Department

Adapted from the Minnesota Department of Public Health, "About the Local Public Health Assessment and Planning Cycle". Retrieved 9/5/2025, from [About the Local Public Health Assessment and Planning Cycle - MN Dept. of Health](#)



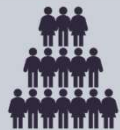
Community Health Assessment (CHA)



Is a snapshot of our community's health



Gives organizations comprehensive information about the community's current health status, needs, and issues



Requires community engagement and collaboration



SEDGWICK COUNTY
Health Department



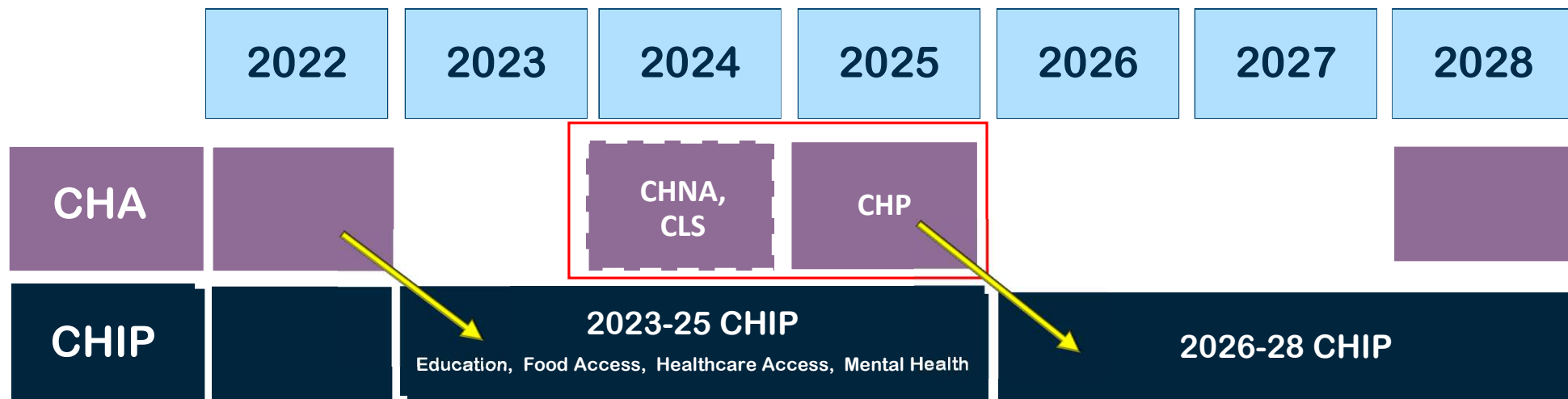
Community Health Improvement Cycle: CHA to CHIP



SEDGWICK COUNTY
Health Department



Community Health Improvement Cycle: Timeline



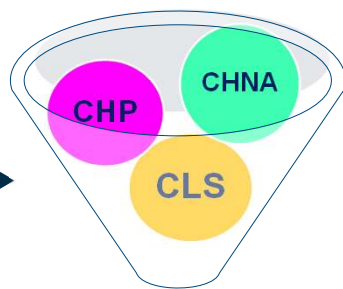
The Sedgwick County CHA provides a comprehensive view of our community's key health status, needs and issues by collecting and analyzing health data and soliciting and incorporating community input.

The Sedgwick County CHIP is a three-year community led process that identifies priority issues, develops and implements strategies for action, and establishes accountability to ensure measureable health improvement.



SEDGWICK COUNTY
Health Department





2025 CHA



Workgroups



SEDGWICK COUNTY
Health Department



CHA to CHIP: Data-driven Process to Choose Health Issues

Setting the Stage: Where Are We Now?

2023-25 Community Health Improvement Plan (CHIP) Workgroups

Speakers Today:

Education: Matthew Obisesan, SCHD

Food Access: Tara Sharon, SCHD

Healthcare Access: Shelley Duncan, Central Plains Health Care Partnership/
Project Access

Mental Health: Chris Steward, SCHD



SEDGWICK COUNTY
Health Department



Thank you to the 2023-25 CHIP Workgroup Co-Chairs

Current Co-Chairs

Community Organizations

- Savannah Ball, Wichita Public Library
- Bailey Blair, Prairie View
- Sarah Crick Milligan, United Way of the Plains
- Shelley Duncan, Central Plains Health Care Partnership / Project Access

Sedgwick County Health Department

- Matthew Obisesan
- Tara Sharon
- Trisha Wile



SEDGWICK COUNTY
Health Department

Past Co-Chairs

Community Organizations

- Naquela Pack, Wichita State University
- Denise Romero, Salud + Bienestar

Sedgwick County Health Department

- Kelsey Lipkea
- Jason McKenney
- Kathrynn Smith
- Chris Steward
- Judy Wohler



Thank you to the Organizations Participating in the 2023-25 CHIP Workgroups

EDUCATION WORKGROUP

- Aetna
- COPE / KUMC
- Department of Children and Families
- ESSDACK
- Flint Hills Job Corps
- Goodwill Industries of Kansas
- HumanKind
- JAG – Jobs for America's Graduates
- Job Corps of Kansas
- Kansas Non-Profit Chamber
- KUMC
- K-State Research & Extension Sedgwick County
- NexStep Alliance (Goodwill Industries & WSU Tech)
- Goodwill Industries of Kansas
- Orion Education and Training
- SCHD
- The Center
- Urban League of Kansas
- Wichita Public Library
- Wichita Public Schools USD 259
- Wichita Transit
- Workforce Centers of South Central Kansas
- WSU Tech



SEDGWICK COUNTY
Health Department



Thank you to the Organizations Participating in the 2023-25 CHIP Workgroups

FOOD ACCESS WORKGROUP

- American Lung Association
- Children 1st
- City Of Wichita Districts 2 & 5
- Common Ground Producers & Growers Inc.
- Department for Children and Families
- Derby Recreation Commission
- Director of Engagement – WSU
- First Church of the Nazarene
- Health & Wellness Coalition
- ICT Food Rescue
- Kansas Food Bank
- Kansas Health Foundation
- Kansas Urban League
- K-State Research & Extension Sedgwick County
- Oaklawn District
- ProviDRs Care
- SCHD
- Senior Services Inc. of Wichita
- The Center
- The Neighboring Movement
- Unite Us
- United Way of the Plains
- USDA
- Wichita Area Metropolitan Planning Organization
- Wichita Public Library
- Wichita State University
- Wichita Transit



SEDGWICK COUNTY
Health Department



Thank you to the Organizations Participating in the 2023-25 CHIP Workgroups

HEALTHCARE ACCESS WORKGROUP

- Alce Su Voz
- Ascension
- Central Plains Healthcare Partnership
- CJS Translation Services
- Department for Children and Families
- Grace Med
- Hunter Health
- KU School of Medicine - Wichita
- KUSM-W Medical Practice Association - Internal Medicine
- Mulvane Community Foundation
- WSU School of Psychology
- ProvDRs Care
- Salud + Bienestar
- SCHD
- Stand Together Foundation
- United Healthcare
- United Way of the Plains
- Urban League of Kansas
- Women's Project of Kansas
- Wichita Family Medicine Specialists
- Wichita State University



SEDGWICK COUNTY
Health Department



Thank you to the Organizations Participating in the 2023-25 CHIP Workgroups

MENTAL HEALTH WORKGROUP

- Aetna
- Central Plains Healthcare Partnership
- Childcare Aware of Kansas
- COMCARE
- Department for Children and Families
- DCCCA
- Ember Hope
- HumanKind
- Kansas Children's Service League
- Kansas Nonprofit Chamber
- Kansas Suicide Prevention HQ
- Mental Health America
- Mirrors
- Minds Matter
- Prairie View
- ProviDRs Care
- Robert J. Dole VA Medical Center
- R.O.S.E. program
- Safe Streets
- SCHD
- Spanish Ad Hoc Translations
- Substance Abuse Center of Kansas (SACK)
- Thrive Restaurants
- The Phoenix
- The Treehouse
- United Way of the Plains
- Urban League
- Valley Hope
- VA Medical Center
- WSU Community Engagement Institute
- WSU School of Psychology
- WSU/Suspenders4Hope



SEDGWICK COUNTY
Health Department

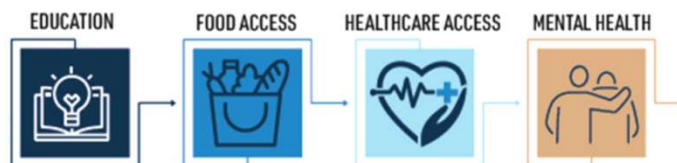




SEDGWICK COUNTY
Health Department

2023-2025 Community Health Improvement Plan (CHIP) Summary Report

Prepared October 2025



Summary Report:

- Co-chairs
- Goal(s)
- Outcome(s)
- Strategies
- Results



SEDGWICK COUNTY
Health Department



2023-25 CHIP Education Workgroup

Matthew Obisesan

Goal

Improve community awareness of educational opportunities

Outcomes

By 2025 in ZIP Codes 67214 and 67216:

- Increase enrollment in early literacy and K-3 reading programs by 10%
- Increase the number of adults enrolled in high school completion programs (outside of USD 259 Wichita Public Schools) by 10%
- Increase enrollment in technical programs and higher education by 10%



SEDGWICK COUNTY
Health Department



2023-25 CHIP Education Workgroup

Successes

- Core group of consistent members
- Created guidance document to help organizations offer childcare for people in high school completion programs

Challenges

- Difficult to keep members engaged, especially at the end of the CHIP
- The group recognized there are system issues to address. Bigger projects are not possible with current capacity and funding.

Ideas for Engagement

- Ensure deadlines set for tasks to be completed
- There is a lot to do in the community. How much can we do?



SEDGWICK COUNTY
Health Department



2023-25 CHIP Education Workgroup

Supporting Parents Pursuing Education in Sedgwick County: Guidance for Organizations Interested in Offering Childcare

Educated Adults are Healthier Adults

Higher educational attainment is linked to better health outcomes. Education affects health literacy, job opportunities, and the ability to navigate the healthcare system.

Access to child care is crucial for adults pursuing education. Reliable childcare reduces parents' stress and allows them to focus on their studies to succeed. Childcare access increases enrollment in adult education courses, especially for single parents. This leads to better job opportunities and economic stability.

In 67214, **30%** of females aged 25 to 34 years do not have a high school diploma

In 67214, **27%** of females aged 35 to 44 years do not have a high school diploma

In 67216, **23%** of females and **25%** of males aged 35 to 44 years do not have a high school diploma

Onsite Child Care Drop-Off Program

If you are an organization helping adults pursue education, you may be able to provide on-site childcare that offers two hours of care for infants through young elementary school age while the caregiver is on site and immediately accessible. Any organization interested in providing child care should complete the CCL 309 "Inquiry Regarding Licensure Child Care Center or Preschool" which can be found at <https://www.kdhe.ks.gov/280/Child-Care-Licensing>. This form should be submitted directly to KDHE. KDHE will determine and notify in writing if a license is needed after submitted.



SEDGWICK COUNTY
Health Department



2023-25 CHIP Healthcare Access Workgroup

Shelley Duncan

Goal

Increase community knowledge of services and resources through education and care coordination

Outcomes

By 2025:

- Increase the number of certified Community Health Workers (CHWs) by 20 to enhance community access to information about available resources
- Increase the number of agencies who have a process to serve residents in 67207, 67210, and 67211 who have Limited English Proficiency by enhancing the knowledge of language and interpretation services available



SEDGWICK COUNTY
Health Department



2023-25 CHIP Healthcare Access Workgroup

Successes

- Accomplished the goals
- Had a core group of people attend meetings

Challenges

- Difficult to keep members engaged
- Sometimes need to guide people to stay on task
- Funding

Ideas for Engagement

- Host speakers
- Implement onboarding process for new workgroup members



SEDGWICK COUNTY
Health Department



2023-25 CHIP Healthcare Access Workgroup



SEDGWICK COUNTY
Health Department

To use this
Resource
Guide, follow
these easy
steps:

Step 1. Utilize the list of local organizations to assist with interpretation and/or translation needs (pgs. 2-4)

Step 2. Determine whether your organization is impacted by federal laws Title VI of the Civil Rights Act, and Section 1557 of the Affordable Care Act (pg. 5)

Step 3. Utilize the list of local and national resources to assist your organization in creating a language access plan (pg. 6)

INTERPRETATION AND TRANSLATION SERVICES IN SEDGWICK COUNTY, KANSAS

Resource Guide

Purpose

To increase the number of agencies and providers who have a process to serve Sedgwick County residents with Limited English Proficiency by enhancing the knowledge of language and interpretation services available

This resource guide was created by the Healthcare Access Workgroup for the Community Health Improvement Plan (CHIP) facilitated by the Sedgwick County Health Department

June 2025



2023-25 CHIP Food Access Workgroup

Tara Sharon

Goal

1. Improve coordination of immediate access to food

Outcomes

By 2025

- Sustain and connect more households to identifiable food sources and food assistance resources in high priority ZIP Codes that receive food assistance by increasing the percentage of households on SNAP from certain ZIP Codes
- Improve coordination among community resources/partners within the food ecosystem by 20%



SEDGWICK COUNTY
Health Department



2023-25 CHIP Food Access Workgroup

Goal

2. Explore long-term solutions to address food access for low-income populations

Outcome

By 2025

- Increase the number of individuals who report increased knowledge, comfort with advocacy, and empowerment regarding access to services and eligibility among people accessing food opportunities.



SEDGWICK COUNTY
Health Department



2023-25 CHIP Food Access Workgroup

Successes

- Food resource cards, food pantry surveys
- Core group of 6 volunteers that work on many activities
- Gained new members throughout the CHIP cycle

Challenges

- Workgroup member engagement – people attended but didn't participate outside of the meetings
- Funding

Ideas for Engagement

- Send reminders about tasks
- Identify lead person for tasks
- Guest speakers



SEDGWICK COUNTY
Health Department



2023-25 CHIP Food Access Workgroup

1,598 QR
Code clicks
as of 10/7/25

Do you struggle to buy groceries?

About 57,000 people in Sedgwick County
don't have adequate food.



There are community resources who want to help.
Scan this QR code for resources or go online here:
hwcwichita.org/local-food-resources



SEDGWICK COUNTY
Health Department



SEDGWICK COUNTY
Health Department



2023-25 CHIP Mental Health Workgroup

Chris Steward

Goal

Reduce deaths of despair

Outcomes

By 2025:

- Reduce deaths by suicide by 20%
- Reduce deaths from overdose by 20%
- Increase engagement with non-traditional community partners by 20



SEDGWICK COUNTY
Health Department



2023-25 CHIP Mental Health Workgroup

Successes

- Able to build upon existing community work previously unknown by the group
- Expertise of the group members
- Create and distribute resource card

Challenges

- Took time to develop strategies and activities
- Tracking resource card distribution and usage
- Workgroup member engagement towards the end of the CHIP

Ideas for Engagement

- Breakout groups worked on focused projects



SEDGWICK COUNTY
Health Department



2023-25 CHIP Mental Health Workgroup



Shared over 5,600 Findhelp.org resource cards



SEDGWICK COUNTY
Health Department



Setting the Stage: Where Are We Now?

2024-25 Community Health Assessment Key Findings

Ketki Kulkarni, MPH
Community Health Analyst
Sedgwick County Health Department



SEDGWICK COUNTY
Health Department



2024-2025 Sedgwick County Community Health Assessment (CHA)

1. Community Listening Sessions (CLS)

Published on the [Ascension website](#).

2. Ascension Via Christi Community Health Needs Assessment (CHNA)

3. Community Health Profile (CHP)

Published on the [SCHD website](#).



SEDGWICK COUNTY
Health Department





Community Listening Sessions (CLS)

- Purpose: Hear community voices
- Primary data collected
- 9 Priority ZIP Codes

67214 67204
67211 67217
67213 67203
67216 67207
67218



Community Health Needs Assessment (CHNA)

- Purpose: Learn about, prioritize, and act upon unmet community health needs
- Secondary data
- Key informant interviews



Community Health Profile (CHP)

- Purpose: Describe the health of Sedgwick County through available data sources
- Secondary data
- Field priorities
- Local reports



SEDGWICK COUNTY
Health Department



CLS Summary

- **CLS participants appreciated being heard.**
- **Overall health was viewed as being holistic.**
- **A lack of resources was a barrier to being healthy.**
- **Health is impacted by relationships, social situations, and the built environment.**
- **Organizations can improve collaboration, connecting the community with necessary resources and support.**

Recurring themes: Utilization of resources and community connections



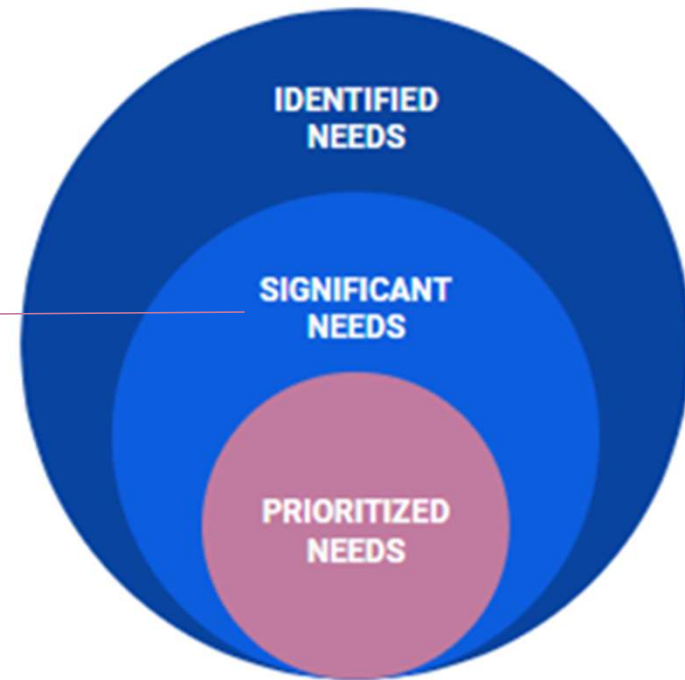
SEDGWICK COUNTY
Health Department



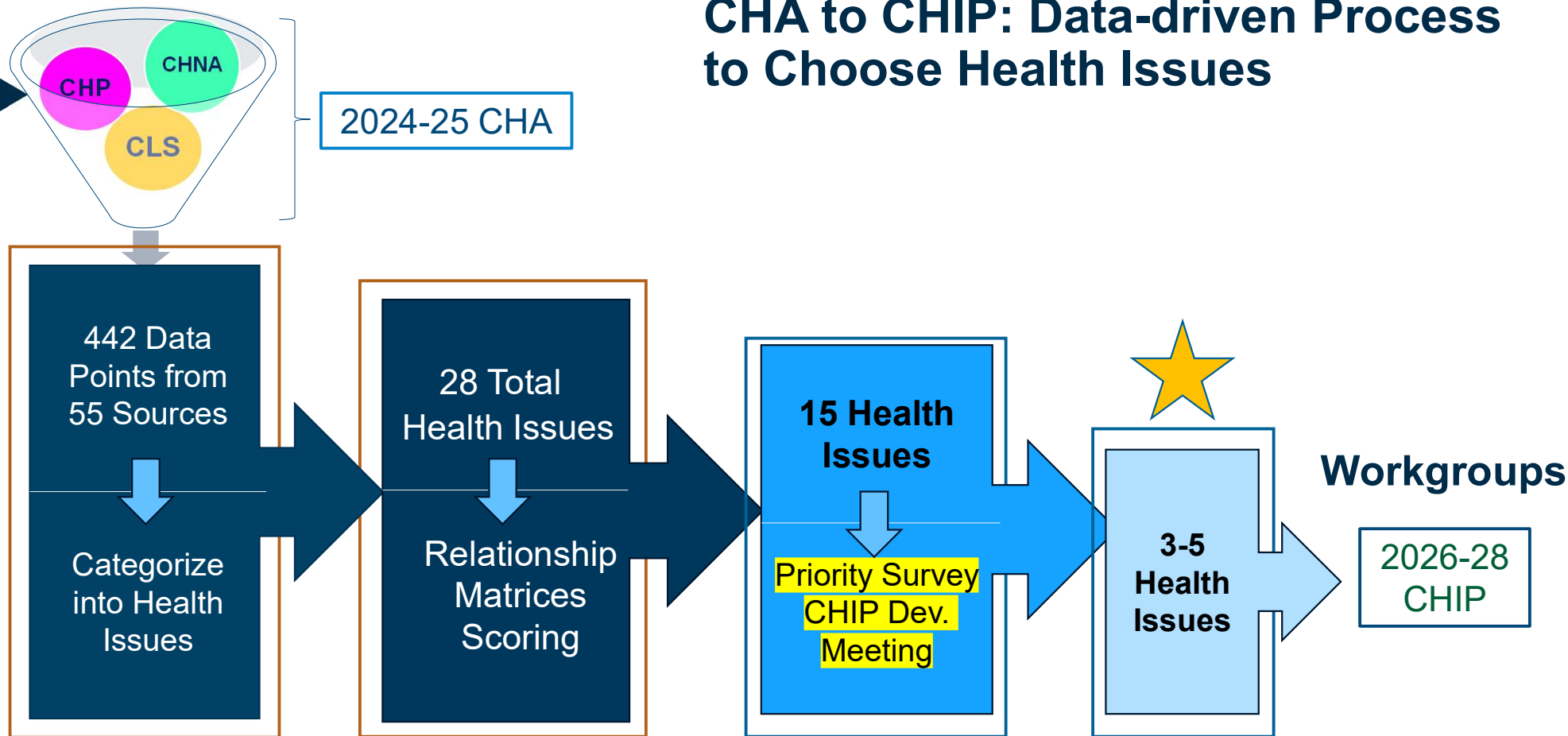
Prioritization process

Significant Needs:

1. Access to Care
2. Social Determinants of Health
3. Health Equity
4. Chronic Conditions



CHA to CHIP: Data-driven Process to Choose Health Issues



SEDGWICK COUNTY
Health Department



Health Issues Identified for the Priority Survey

- Birth Outcomes
- Education
- Family Planning
- Food Environment
- Healthcare Access
- Heart Disease & Kidney Disease
- Housing
- Mental Health
- Obesity & Diabetes
- Poverty
- Pulmonary Disease
- Smoking & Related Conditions
- Substance Misuse – incl. Alcohol
- Violence & Crime



SEDGWICK COUNTY
Health Department



Setting the Stage: Where Are We Now?

Health Priority Survey Results 2025

Ketki Kulkarni, MPH
Community Health Analyst
Sedgwick County Health Department



SEDGWICK COUNTY
Health Department



Priority Survey

- Purpose: Gather community input to narrow down health issues for the CHIP
- The SCHD CHIP Priority Survey was distributed in September 2025 to partners and community members
- A total of 193 people responded
 - 88 (45.6%) Business Partner
 - 105 (54.4%) Community Member



SEDGWICK COUNTY
Health Department



Key Survey Components



SEDGWICK COUNTY
Health Department



Priority Survey Respondents

- Alzheimer's Association
- Cheney Golden Age Home
- Child Advocacy Center of Sedgwick County
- Child Start
- City of Wichita (no department specified)
- City of Wichita Law Department
- City of Wichita Fire Department
- City of Wichita Police Department
- COMCARE
- Community Organization (unspecified)
- DCF
- Dear Neighbor Ministries
- Derby Recreation Commission
- GraceMed
- Haysville Learning Café
- Health ICT (Medical Society of Sedgwick County)
- Holy Family Medical
- Hunter Health
- ICT Farms and Montiel Farms
- Kansas Health Foundation
- KDHE
- K-State Extension
- Premise Health
- Private Practice
- Robert J. Dole VA
- Salud mas Bienstar
- Sedgwick County Health Department



SEDGWICK COUNTY
Health Department



Priority Survey Respondents

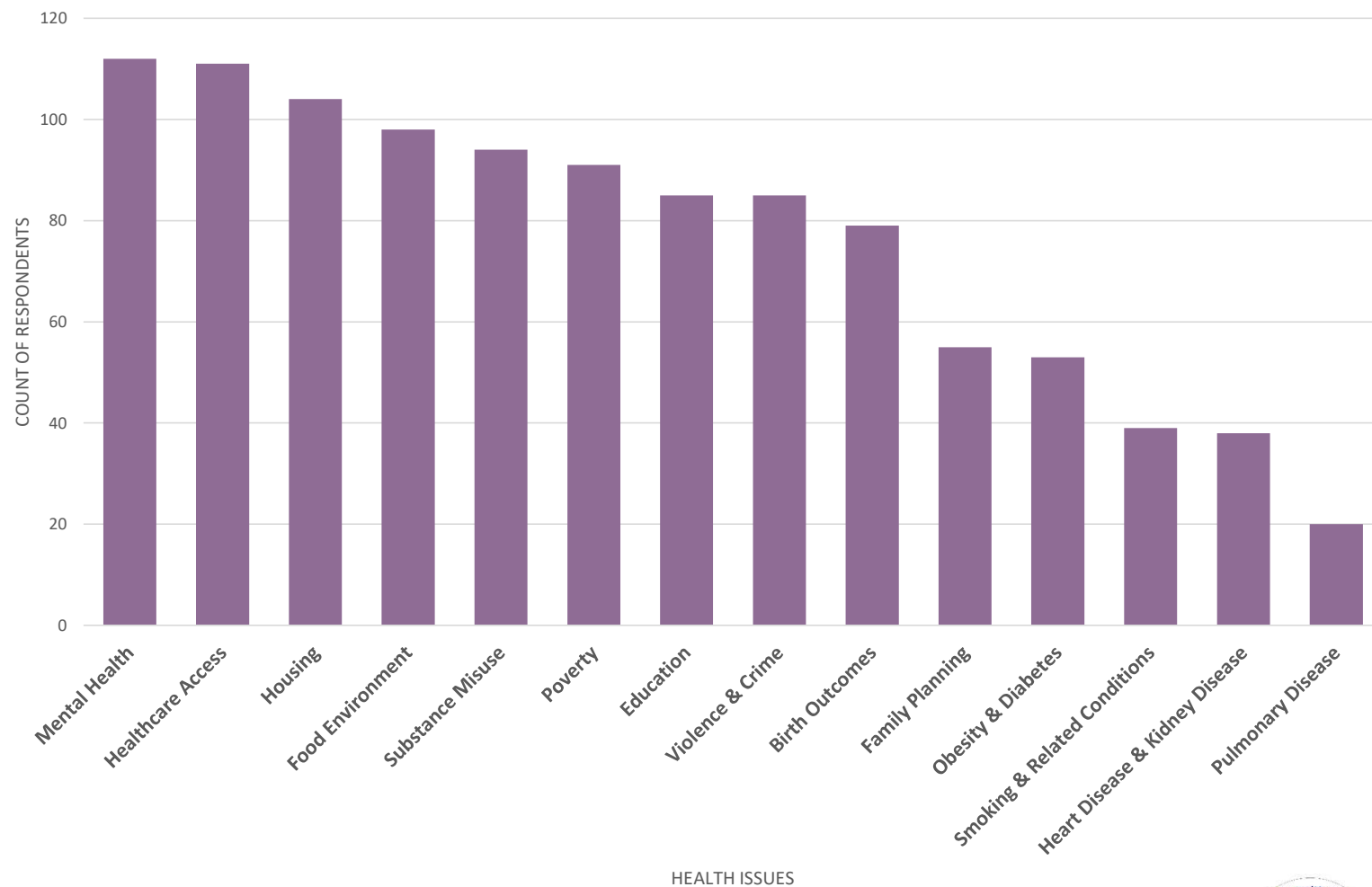
- Sedgwick County
- Sedgwick County Department of Aging and Disabilities
- Sedgwick County Sheriff's Department
- Substance Abuse Center of Kansas
- Sunflower Collective Outdoors (ICT Treehuggers)
- Sunflower Health Plan
- The Neighboring Movement
- University of Kansas-Wichita
- University of Kansas-Wichita Medical Practice Association
- University of Kansas-Wichita Department of Pediatrics
- United Way of the Plains
- Urban League of Kansas
- USD 268 Cheney
- USD 259 Wichita
- Club Parkinson's
- Wichita Area Sexual Assault Center
- Wichita Medical Research and Educational Foundation
- Wichita State University
- Wichita State University Student Health Services
- Wichita State University CEI
- Wichita Transit
- YMCA



SEDGWICK COUNTY
Health Department



High Importance in the Community

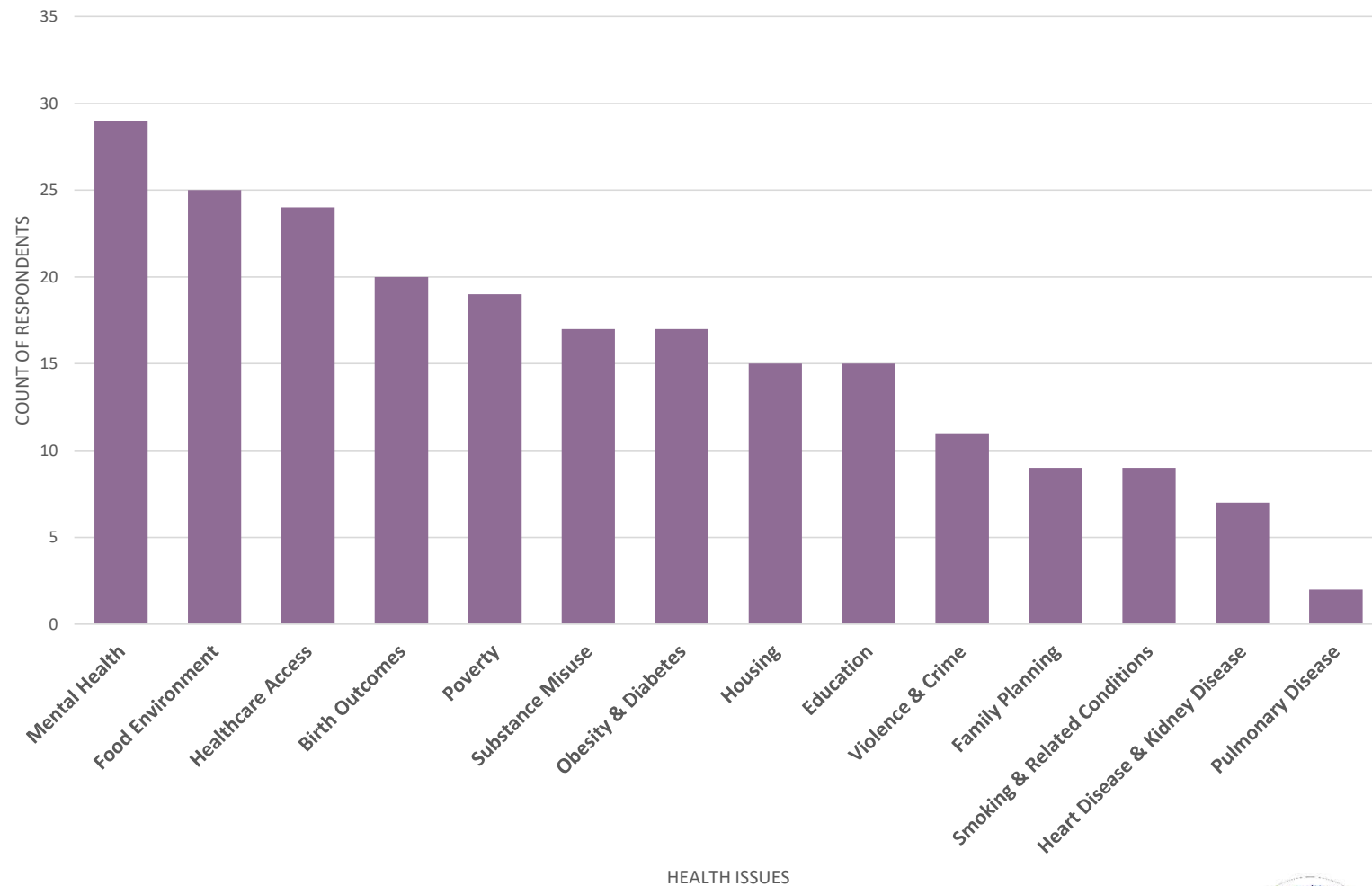


SEDGWICK COUNTY
Health Department

Comparison of Health Issues Where Respondents Marked High Importance in the Community



Professional Expertise on Health Issues



SEDGWICK COUNTY
Health Department

Comparison of Health Issues Where Respondents Marked Yes for Having Professional Expertise



Health Priority Survey Results 2025



SEDGWICK COUNTY
Health Department

The Sedgwick County Health Department CHIP Health Priority Survey was distributed in September 2025 to partners and community members. A total of 193 people responded.

Table 1. Ranking of Health Issues by Community Importance

RANK	HEALTH ISSUE	IMPORTANCE	IMPACT		
			Yes %	No %	I don't know %
1	Mental Health	2.79	68.8	14.2	17



SEDGWICK COUNTY
Health Department



Priority Survey Results Summary



SEDGWICK COUNTY
Health Department

RANK	HEALTH ISSUE	IMPORTANCE	IMPACT		
			Yes %	No %	I don't know %
1	Mental Health	2.79	68.8	14.2	17.0
2	Healthcare Access	2.76	55.0	17.1	27.9
3	Housing	2.71	66.0	15.6	18.4
4	Food Environment	2.66	65.7	12.1	22.1
5	Poverty	2.61	39.7	18.4	41.8
6	Substance Misuse	2.60	56.7	10.6	32.6
7	Violence & Crime	2.55	45.4	15.6	39.0
8	Education	2.53	48.9	11.5	39.6
9	Birth Outcomes	2.44	43.6	10.7	45.7
10	Family Planning	2.28	35.7	17.1	47.1
12	Obesity & Diabetes	2.25	33.5	17.0	47.5
11	Heart Disease & Kidney Disease	2.16	27.7	12.1	60.3
13	Smoking & Related Conditions	2.06	44.7	9.9	45.4
14	Pulmonary Disease	1.89	17.7	10.6	71.6

Setting the Stage: Where Are We Now?

Introduction to Data Walk Activity

Ketki Kulkarni, MPH
Community Health Analyst
Sedgwick County Health Department



SEDGWICK COUNTY
Health Department



Data Walk

Purpose of the Data Walk:

- Explore detailed data on 15 key health issues affecting Sedgwick County
- Identify patterns, trends, and priority areas to improve community health outcomes
- Jot down your observations on the yellow sheet



SEDGWICK COUNTY
Health Department



Data Walk Notes

- What contributes to the problem?
- What are the health consequences of this problem?




SEDGWICK COUNTY
Health Department

CHIP Development Meeting October 14, 2025
Data Walk Notes

Instructions: As you complete the Data Walk, add notes to each of the health issues about the following questions:

- What contributes to this problem?**
 - What factors are influencing poor health outcomes and trends/patterns?
 - What evidence supports your observation?
- What are the health consequences of this problem?**
 - Consider individual and community-wide consequences.
 - Are some groups affected more than others?
 - Can work on this health issue improve health outcomes for other health issues?



Health Issue:	Notes:
Alcohol	
Birth Outcomes (Infant mortality, low birth weight)	
Education (Graduation rates, higher education)	
Family Planning (Sexually transmitted infections and screenings, contraception)	
Food Environment (Food insecurity, free or reduced lunches)	
Healthcare Access (Insurance, basic medical care, etc.)	
Heart Disease and Kidney Disease (Stroke, hypertension, kidney failure, etc.)	
Housing (Homelessness, severe housing problems)	

Page 1 of 2

Sedgwick County Health Department

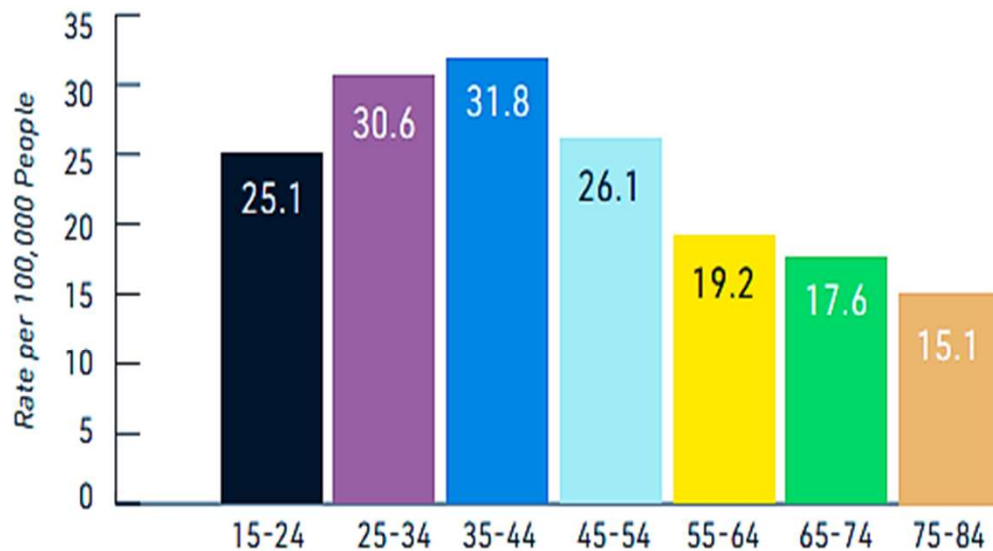
Last Updated: 10/8/2025 3:55 PM



Rate vs Percentage (%)

RATE

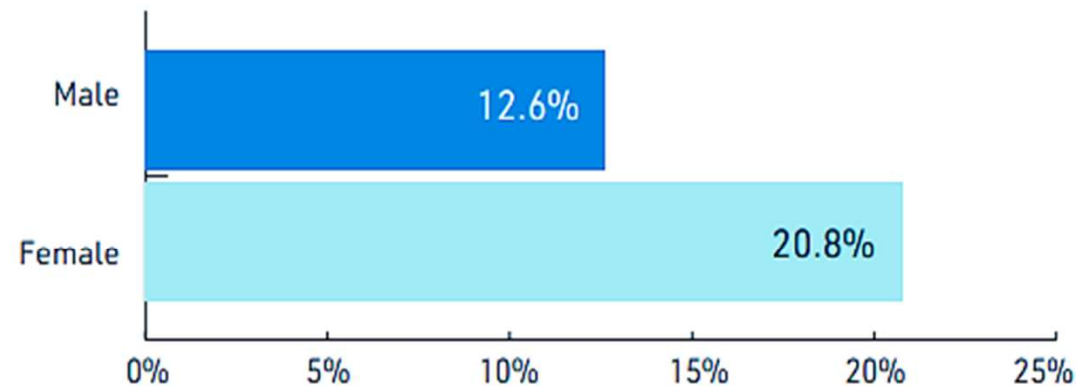
SEDGWICK COUNTY SUICIDE DEATH RATE
PER 100,000 PEOPLE BY AGE



SOURCE: CDC WONDER CAUSE OF DEATH (2018-2023)

PERCENTAGE

SEDGWICK COUNTY: PERCENTAGE OF PEOPLE
REPORTING 14+ POOR MENTAL HEALTH DAYS
IN THE LAST 30 DAYS



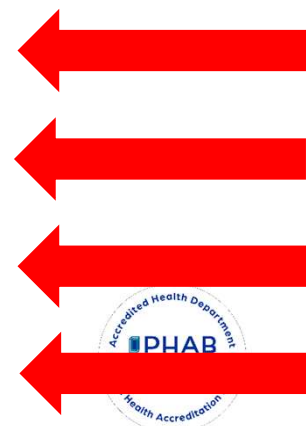
SOURCE: 2021 BRFS POPULATION: SEDGWICK COUNTY

Relationship Matrix

RELATIONSHIP MATRIX: MENTAL HEALTH							Stems from	Leads to	Both Stems from and Leads to	No Evidence of Association
Alcohol	Housing	Birth Outcomes	Obesity and Diabetes	Drug Misuse	Poverty	Heart and Kidney Disease				
Food Environment	Tobacco and Vaping	Family Planning	Violence and Crime	Healthcare Access	Education	Pulmonary Disease				

It helps us understand how all these health issues connect

Mental Health (upstream & downstream)	Both Stems from and Leads to ↔	Poverty
Mental Health (upstream)	Leads to →	Housing
Mental Health (downstream)	Stems from ←	Food Environment
Mental Health	No Evidence of Association -----X-----	Heart and Kidney Disease



SEDGWICK COUNTY
Health Department



Morning Break

10:00 AM – 10:10 AM



SEDGWICK COUNTY
Health Department



Exploring Sedgwick County Data: Take the Interactive Data Walk

10:10 AM – 10:40 AM



SEDGWICK COUNTY
Health Department



Charting the Path Forward: What Might the 2026 CHIP Look Like?

10:40 - 11:25 PM

Chris Steward, MPH
Sedgwick County Health Department



SEDGWICK COUNTY
Health Department



Designing the Next CHIP

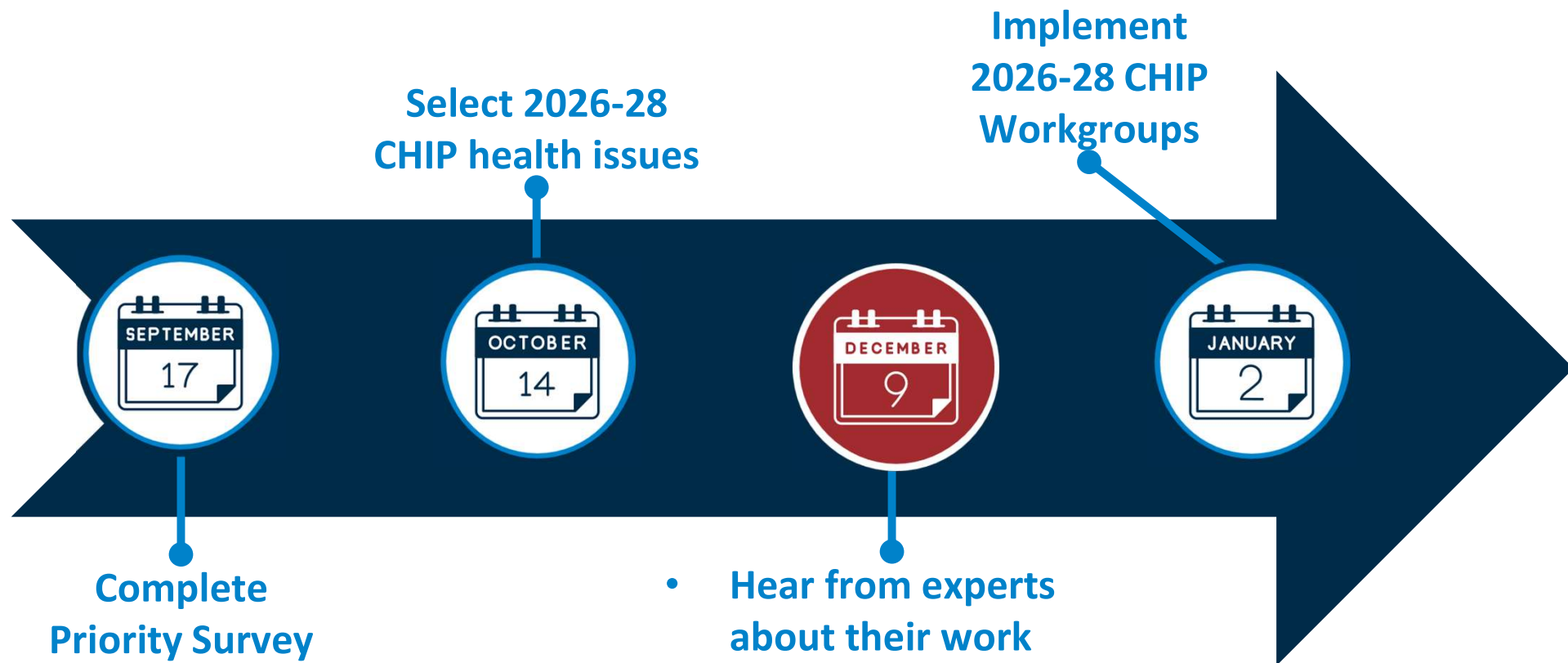
- Community Health Improvement Plan (CHIP) context
 - What is a CHIP workgroup?
 - What guides the CHIP work?
- Choosing Health Issues for Community Impact



SEDGWICK COUNTY
Health Department



CHIP Development Dates



SEDGWICK COUNTY
Health Department



What is a CHIP Workgroup?

Community
partners working
together to make
community change

Joint effort: SCHD
and community
organizations



SEDGWICK COUNTY
Health Department



CHIP Workgroup Specifics

- The 2026 CHIP workgroups will start in January
 - One workgroup per health issue
 - Develop goals, outcomes, and strategies.
 - Work on activities
- Workgroups meet monthly or quarterly for communication, collaboration, progress checks



SEDGWICK COUNTY
Health Department



Opportunities for the 2026 CHIP Workgroups



SEDGWICK COUNTY
Health Department



What guides the CHIP Work?

Mobilizing for Action through Planning and Partnerships (MAPP 2.0)

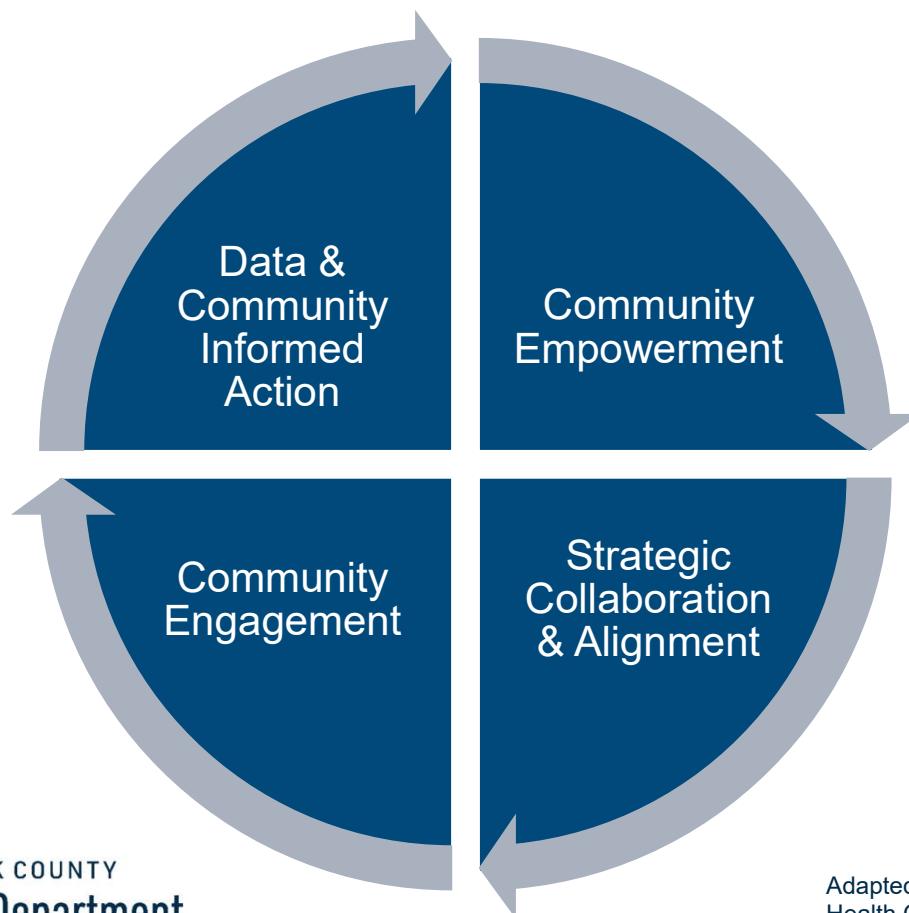
- Community health improvement framework to develop, implement, and monitor a shared community health improvement plan
- Community-driven strategic planning process that helps us:
 - Assess public health needs & resources
 - Develop strategies to improve health and well-being of our population



SEDGWICK COUNTY
Health Department



Guiding the Work: MAPP 2.0 Foundational Principles (Adapted)



SEDGWICK COUNTY
Health Department

Adapted from National Association of County & City
Health Officials (NACCHO) MAPP 2.0 User's Handbook
Retrieved 10/12/25, from <https://www.naccho.org>



Guiding the Work: MAPP 2.0 Foundational Principles (Adapted)



SEDGWICK COUNTY
Health Department

Adapted from National Association of County & City
Health Officials (NACCHO) MAPP 2.0 User's Handbook
Retrieved 10/12/25, from <https://www.naccho.org>



Guiding the Work: MAPP 2.0 Foundational Principles (Adapted)



SEDGWICK COUNTY
Health Department

Adapted from National Association of County & City
Health Officials (NACCHO) MAPP 2.0 User's Handbook
Retrieved 10/12/25, from <https://www.naccho.org>



Guiding the Work: MAPP 2.0 Foundational Principles (Adapted)



Work together on community-wide strategies



SEDGWICK COUNTY
Health Department

Adapted from National Association of County & City
Health Officials (NACCHO) MAPP 2.0 User's Handbook
Retrieved 10/12/25, from <https://www.naccho.org>



Guiding the Work: MAPP 2.0 Foundational Principles (Adapted)



Build connection & trust
Mobilize action to change systems



SEDGWICK COUNTY
Health Department

Adapted from National Association of County & City
Health Officials (NACCHO) MAPP 2.0 User's Handbook
Retrieved 10/12/25, from <https://www.naccho.org>



Sedgwick County MAPP Work

Definition of Community

- Collective groups of people with diverse perspectives who **currently and in the future** live, work, play, worship, lead, and connect with/utilize/need resources within Sedgwick County.*

Mission Statement

- To promote a healthier Sedgwick County **by engaging and collaborating with our community**, fostering partnerships that drive equitable health outcomes for everyone.**

Values

- Connectedness, Awareness, Inclusiveness, Community-driven**



SEDGWICK COUNTY
Health Department

*Developed at the Sedgwick County Health Alliance Meeting, 9/6/24

**Developed at the Sedgwick County Health Alliance Meeting, 10/9/24



Choosing Health Issues for Community Impact

Enhance current
work of
organizations on
existing projects

Make progress
on root causes
of health issues



SEDGWICK COUNTY
Health Department



Root Causes and Systems Change

- Health outcomes are driven by:
 - Clinical care (access to care and quality of care) - small part
 - Physical environment
 - Health behaviors
 - Social and economic factors
- The conditions that shape health:
 - Community-wide conditions in which people are born, grow, live, work, learn, and age and the fundamental drivers of these conditions



SEDGWICK COUNTY
Health Department

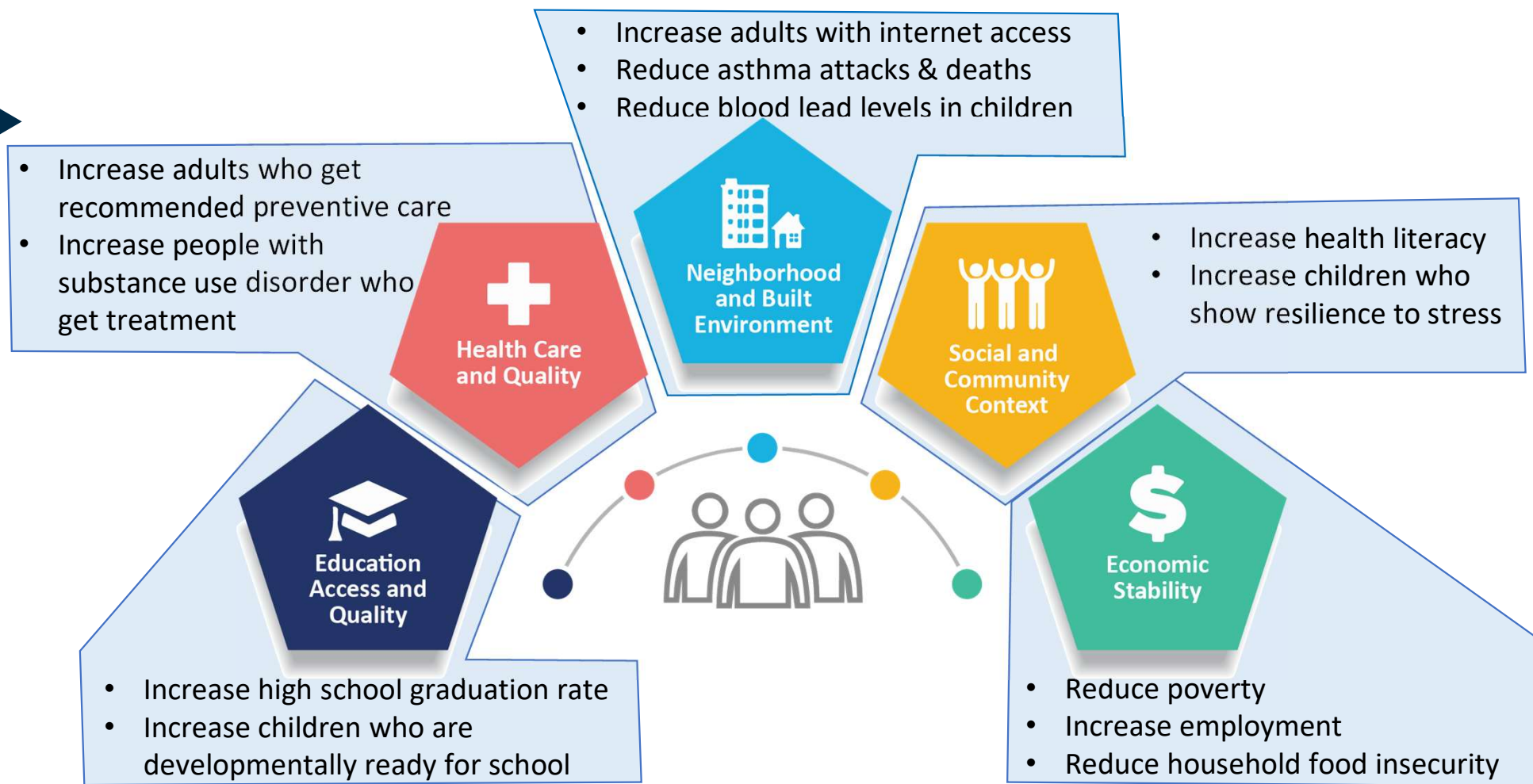


Individual Social Needs and Community-wide Conditions



SEDGWICK COUNTY
Health Department





SEDGWICK COUNTY
Health Department

Image from the Centers for Disease Control and Prevention (CDC). Retrieved 8/24/25, from <https://www.cdc.gov/public-health-gateway/php/about/social-determinants-of-health.html>
Examples are from Healthy People 2030, U.S. Department of Health and Human Services, Office of Disease Prevention and Health Promotion. Retrieved 8/24/25, from <https://health.gov/healthypeople/objectives-and-data/social-determinants-health>



Root Causes and Relationships between Health Issues

RELATIONSHIP MATRIX: MENTAL HEALTH							Stems from	Leads to	Both Stems from and Leads to	No Evidence of Association
Alcohol	Housing	Birth Outcomes	Obesity and Diabetes	Drug Misuse	Poverty	Heart and Kidney Disease				
Food Environment	Tobacco and Vaping	Family Planning	Violence and Crime	Healthcare Access	Education	Pulmonary Disease				

RELATIONSHIP MATRIX: PULMONARY DISEASE							Stems from	Leads to	Both Stems from and Leads to	No Evidence of Association
Alcohol	Housing	Birth Outcomes	Mental Health	Drug Misuse	Obesity and Diabetes	Heart and Kidney Disease				
Food Environment	Tobacco and Vaping	Family Planning	Violence and Crime	Healthcare Access	Education	Poverty				



SEDGWICK COUNTY
Health Department



Selecting the 2026 CHIP Health Issues: Introduction

11:25 - 11:40 PM

Chris Steward, MPH
Sedgwick County Health Department



SEDGWICK COUNTY
Health Department



Check-in on Meeting Objectives

- ✓ Understand the Sedgwick County Community Health Improvement Cycle and Process
- ✓ Learn Sedgwick County data trends for 15 health issues
- **Select 3-5 health issues for the 2026-2028 CHIP**



SEDGWICK COUNTY
Health Department



How to Select?

- Discuss health issues in your table groups
 - Use green document to take notes
- References:
 - 2023-2025 CHIP Summary Document
 - Priority Survey Results (back of agenda)
 - Data Walk Notes (yellow document)
- Review questions on the green document and the health issue selection criteria



SEDGWICK COUNTY
Health Department



Green Document Questions

- What contributes to this problem?
- What are the health consequences of this problem?
- What work is happening now and what work can we build on with collective impact?



SEDGWICK COUNTY
Health Department



Health Issue Selection Criteria

Discuss and select top issues using the following criteria:

1. Size – How many people are affected?
2. Trends – Are health outcomes getting worse or better?
3. Disparities – Are some groups affected more than others?
4. Relationship to other health issues – Will work on this health issue impact other issues?
5. Resources – What resources are available in the community?
6. Importance – How significant is this issue in our community?
7. Impact – Are community partners working collaboratively on this topic to create meaningful change in the community?
 - What could be the role of the CHIP workgroup in the current work on this health issue?
 - Is there a proven strategy or best practice that could make a difference?
8. If this topic were a focus for the next three years, what difference do you think we could make?



SEDGWICK COUNTY
Health Department



Process to Select the 2026 CHIP Health Issues

1. Before Lunch (by 11:40):
 - Facilitators help to identify table spokesperson and method to discuss health issues
2. After Lunch Table Work (12:10-1:20):
 - Facilitated table discussions
 - By 1:20, select 3 health issues. Tally choices at the front of the room.
3. Large Group Voting (1:20-1:50):
 - Tables report
 - By 1:50, large group selection of 3-5 health issues



SEDGWICK COUNTY
Health Department



Facilitator Roles & Logistics

- Facilitators will move the discussion along & ensure time is monitored
- Notetakers will document discussion for each health issue
- Discussion ground rules: Ideas welcome, respect, silence phones
- Table voting ends at 1:20. Spokesperson adds tallies.



SEDGWICK COUNTY
Health Department



Table Work before Lunch

Until 11:40 AM



SEDGWICK COUNTY
Health Department



Lunch!

11:40 AM - 12:10 PM



SEDGWICK COUNTY
Health Department



Selecting the 2026 CHIP Health Issues: Table Work

12:10 - 1:20 PM



SEDGWICK COUNTY
Health Department



Selecting the 2026 CHIP Health Issues: Large Group Voting

1:20 - 1:50 PM



SEDGWICK COUNTY
Health Department



Goal & Voting Process

Goal: By 1:50, large group will select 3-5 health issues

Process:

1. Spokesperson from each table reports
 - Limit verbal report to 2 minutes
 - State the table's 3 health issues and reasons selected
 - No need to restate reasons other tables have already presented
2. Discussion of top choices
3. Attendees select 3-5 health issues for the 2026 CHIP



SEDGWICK COUNTY
Health Department



Closing and Next Steps

1:50 – 2:00 PM



SEDGWICK COUNTY
Health Department



CHIP Meeting #1 Wrap-up

Complete Note Card to let us know what health issue workgroups you are interested in.

Note Cards

Name: _____

Organization: _____

Phone: _____

Email: _____

Primary Health Issue Workgroup: _____

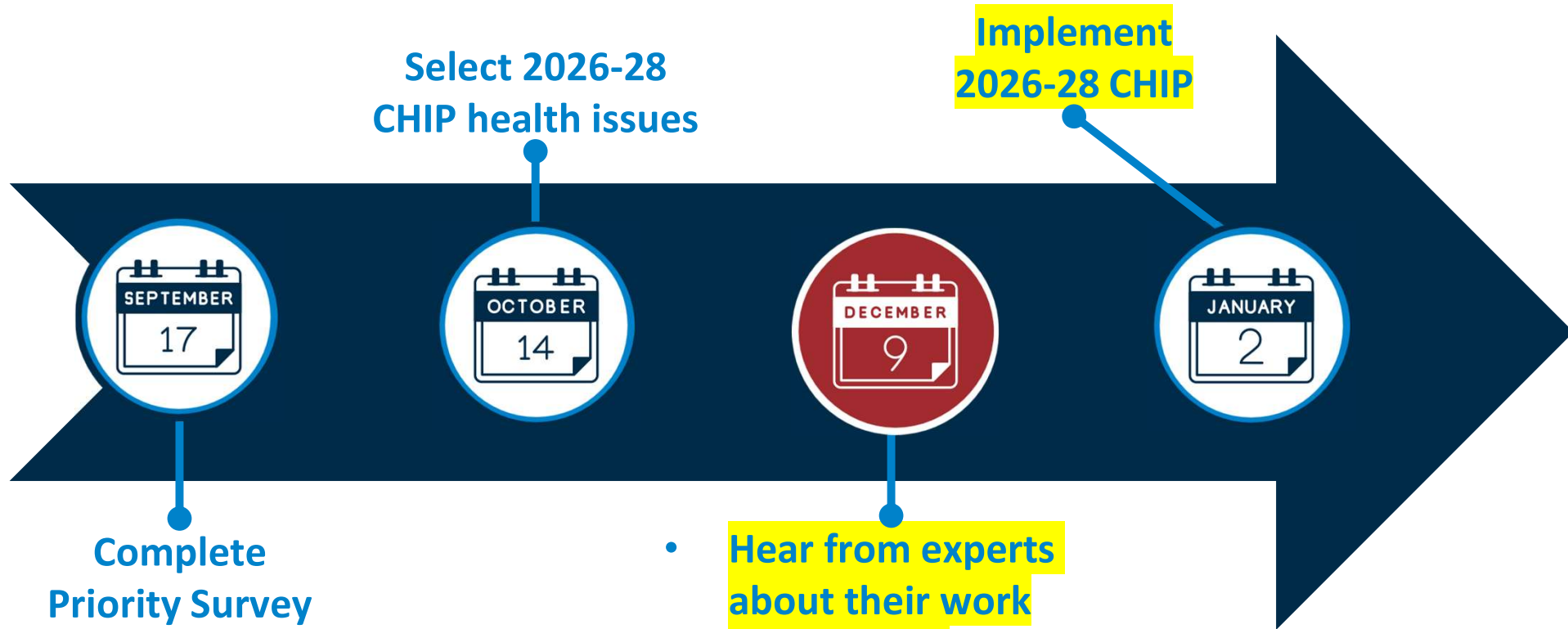
Secondary Health Issue Workgroup: _____



SEDGWICK COUNTY
Health Department



Next Steps



SEDGWICK COUNTY
Health Department



CHIP Meeting #2

Tuesday, December 9

Everyone is welcome. There is no cost to attend.

Time: 9 AM – 2 PM

Location: Sedgwick County Extension, 7001 W. 21st St., Wichita, KS 67205

Breakfast and lunch provided

Participants will:

- Hear from community experts about their work on the health issues
- Create goals for the 2026 CHIP that begins in January



SEDGWICK COUNTY
Health Department



Thank you.
See you on December 9th.



SEDGWICK COUNTY
Health Department

