



DIVISION OF FINANCE – PURCHASING DEPARTMENT

100 N. Broadway St, Suite 610 Wichita, KS 67202 • Phone (316) 660-7255 • Fax (316) 660-1839

PURCHASING@SEDGWICK.GOV • SEDGWICKCOUNTY.ORG

ADDENDUM #1

RFB #26-0003

SEDGWICK COUNTY ADULT DETENTION FACILITY DOMESTIC WATER HEATER REPLACEMENT

January 21, 2026

The following is to ensure that vendors have complete information prior to submitting a **bid**. Here are some clarifications regarding RFB #26-0003 Sedgwick County Adult Detention Facility Domestic Water Heater Replacement for Project Services.

Questions and/or statements of clarification are in **bold** font, and answers to specific questions are *italicized*.

Please note: Additional Water Heater added-see attached.

1. Where is parking and staging to be provided on site?

Parking will be in the garage across Elm Street or on the street. Material delivery will be made in the yard north of the Courthouse. Staging will need to happen on First Floor.

2. Will daily access into the building always be required to go through the secured entrance?

Yes

Firms interested in submitting a **bid**, must respond with complete information and **deliver on or before 1:45 pm CST, February 3, 2026**. Late **bids** will not be accepted and will not receive consideration for final award.

“PLEASE ACKNOWLEDGE RECEIPT OF THIS ADDENDUM ON THE BID RESPONSE PAGE.”

Sincerely,

Euleeta (Lee) Lee Barrier, NIGP-CPP
Senior Purchasing Agent

LB/ks

5 Addendum Number One

This Addendum is hereby made part of the Contract Documents to the same extent as though it were originally included therein. Refer to "Bid Form" for acknowledgment of Addenda.

- 10 All Contractors, Subcontractors and suppliers are reminded that they shall be familiar with all Addenda items (as well as all parts of the Construction Documents) so as to understand the extent of their work and its interrelation with other trades.

To all bidders for furnishing all labor and materials necessary for the following Contract:

15 Sedgwick County Adult Detention Facility Water Heater Replacement
141 West Elm Street
WICHITA, KANSAS 67203

20 Prepared by:
Schaefer Architecture

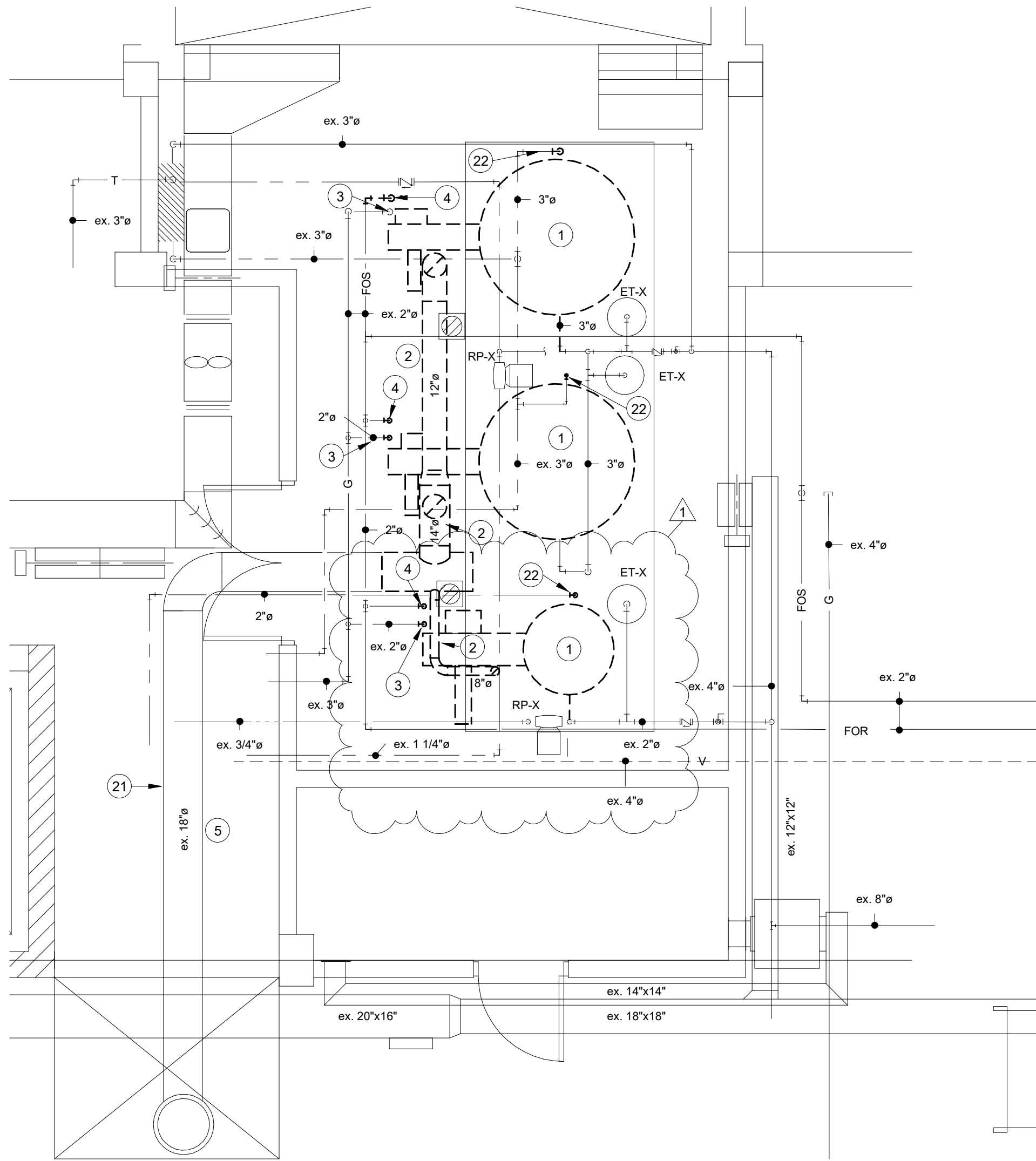
MECHANICAL:

- 25 **ITEM AD1-M01** **Drawing Sheet M50.1**
ADDITION Replaced existing water heater at south end of room and associated
piping. Fuel oil piping to be capped at the main.
- 30 **ITEM AD1-M02** **Drawing Sheet M70.1**
ADDITION Added additional pump WHP-6, water heater GWH-6, and storage tank
ST-6 to the respective schedules.

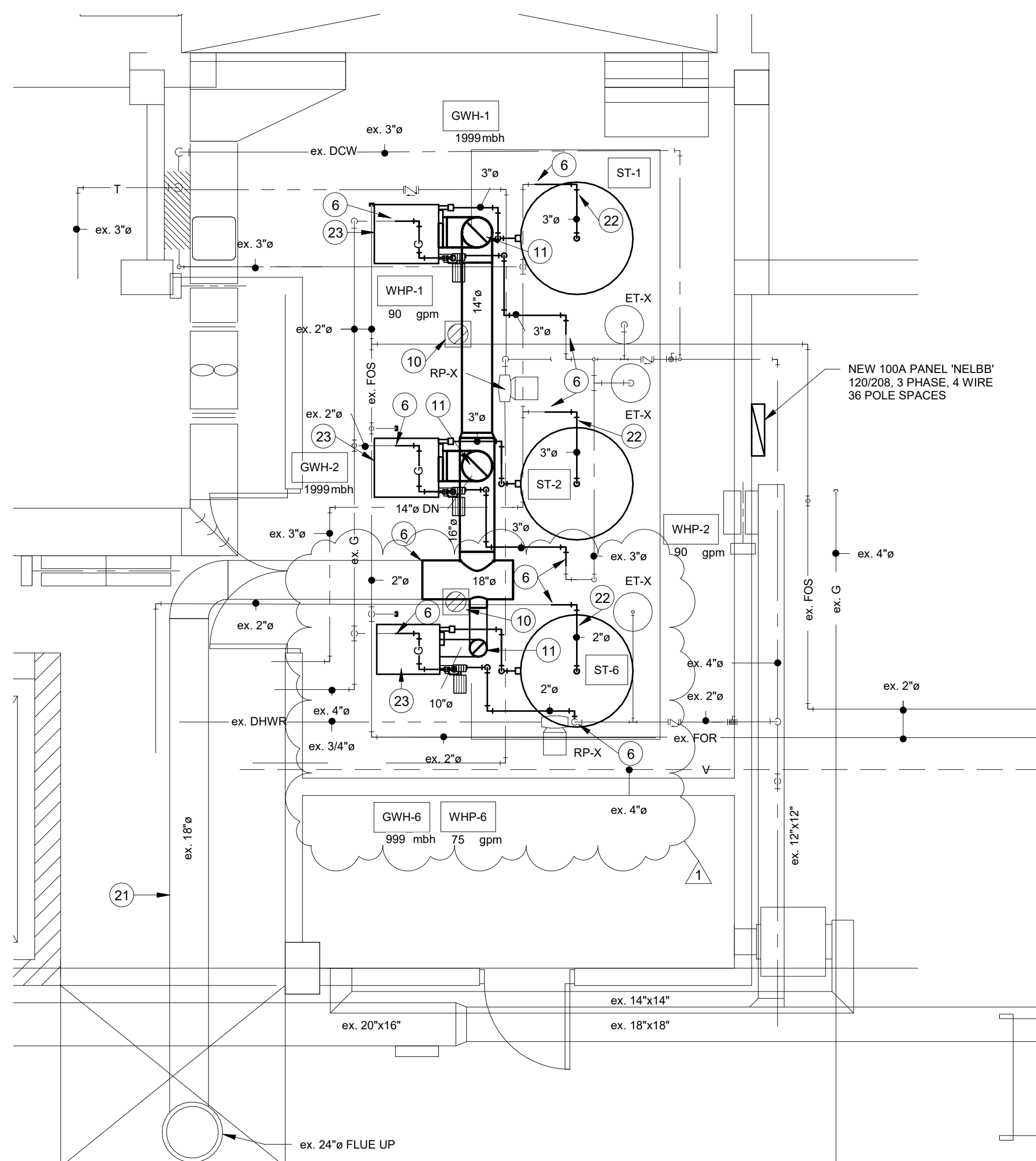
ELECTRICAL:

- 35 **ITEM AD1-E01** **Drawing Sheet E1.1**
ADDITION Provide power to GWH-6 and WHP-6 from new panel.

40 **End of Addendum Number One**



2 North Mech Demo Plan
1/4" = 1'-0"



1 North Mech Plan
1/4" = 1'-0"

PLAN NOTES

- 1 WATER HEATERS AND ASSOCIATED PIPING TO BE REMOVED.
- 2 REMOVE FLUES
- 3 REMOVE GAS PIPING
- 4 REMOVE EXISTING FUEL OIL PIPING BACK TO MAIN AND CAP.
- 5 EXISTING TO REMAIN.
- 6 CONNECT TO EXISTING. FIELD VERIFY SIZE.
- 10 EXTEND CONDENSATE PIPING TO NEAREST FLOOR DRAIN.
- 11 PROVIDE A BAROMETRIC DAMPER IN FLUE.
- 21 EXISTING FLUE IS METALFAB PIC DOUBLE WALL POSITIVE PRESSURE.
- 22 EXISTING THERMOWELL TO BE REMOVED AND REUSED ON NEW PIPING.
- 23 PROVIDE EQUIPMENT HOUSEKEEPING PAD UNDER WATER HEATER.

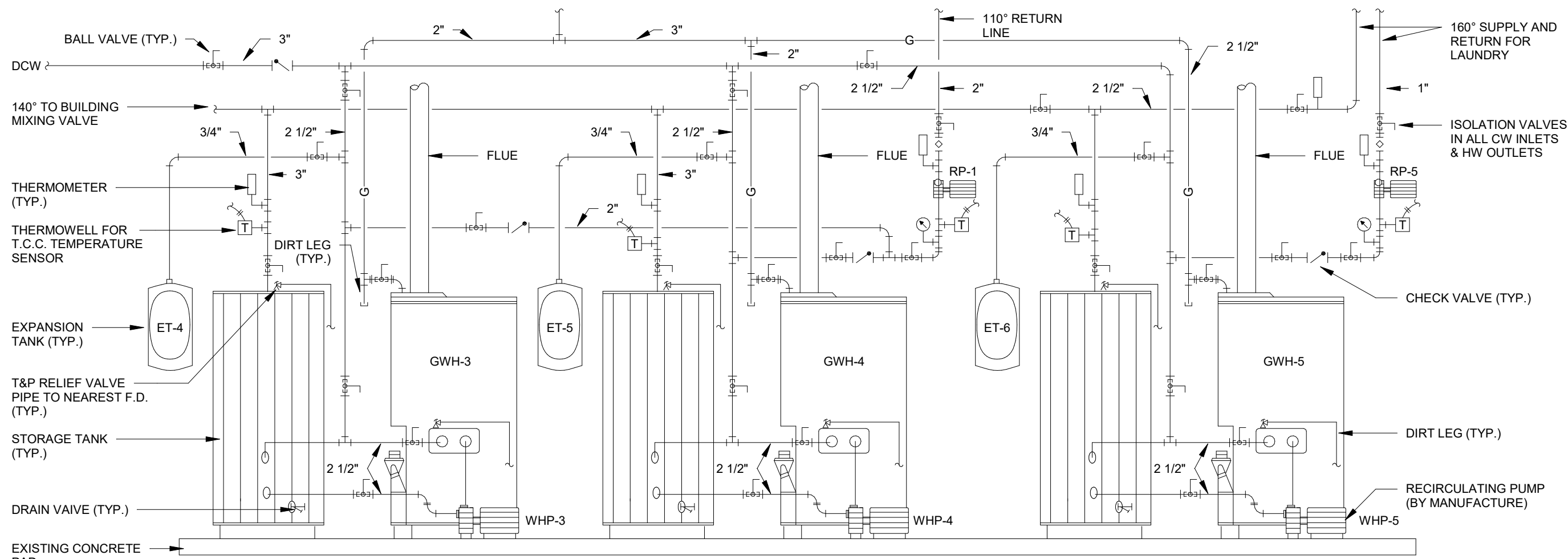
REVISIONS

01/19/26 AD1

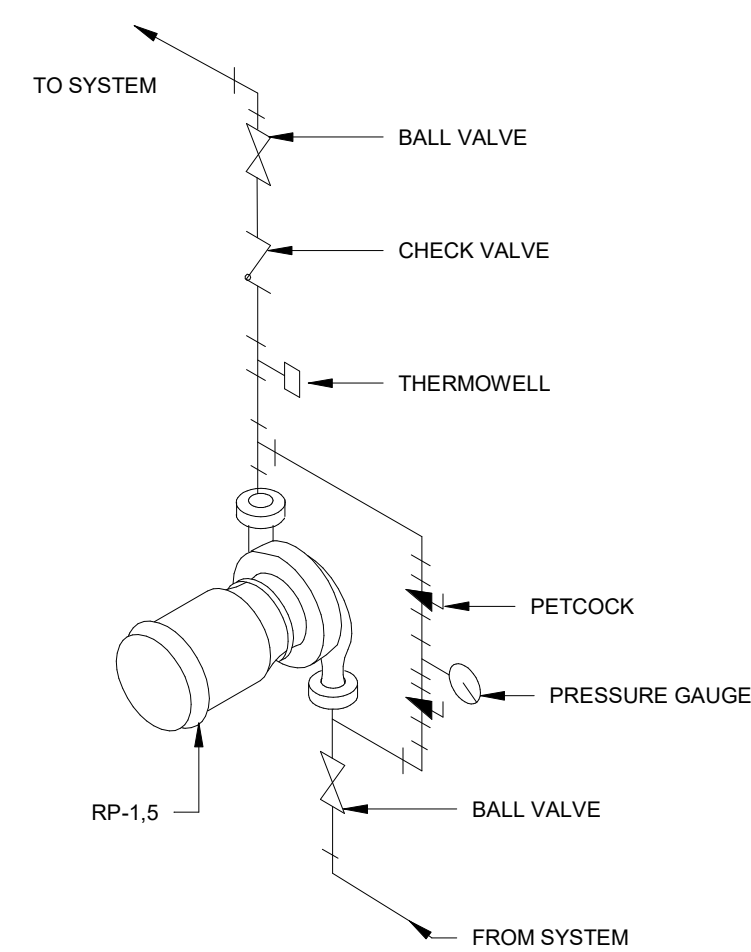
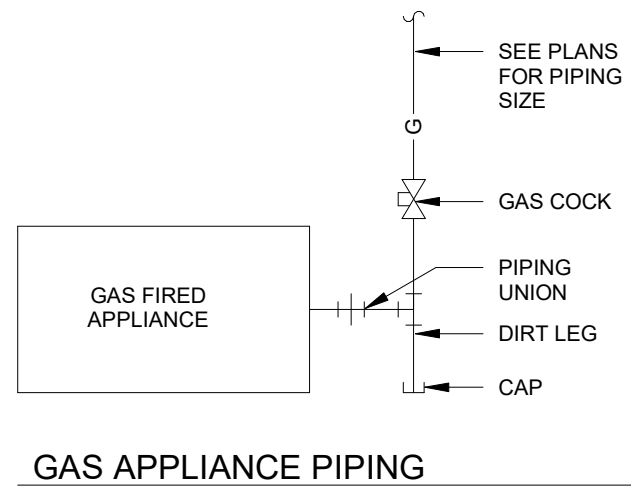
PROJECT NUMBER
5278.53

DATE
DECEMBER 2025

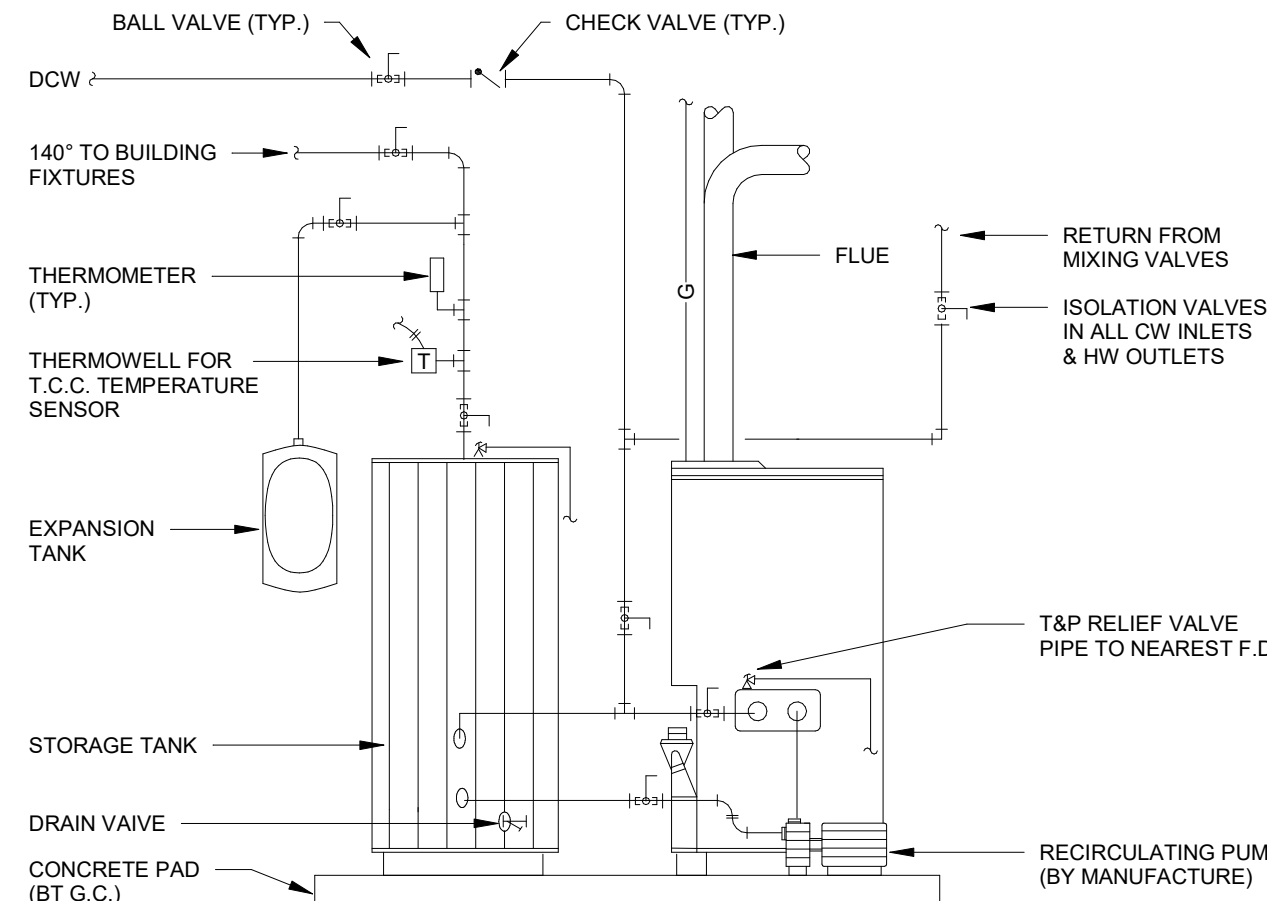
**NORTH ENLARGED
MECHANICAL ROOM
PLAN**



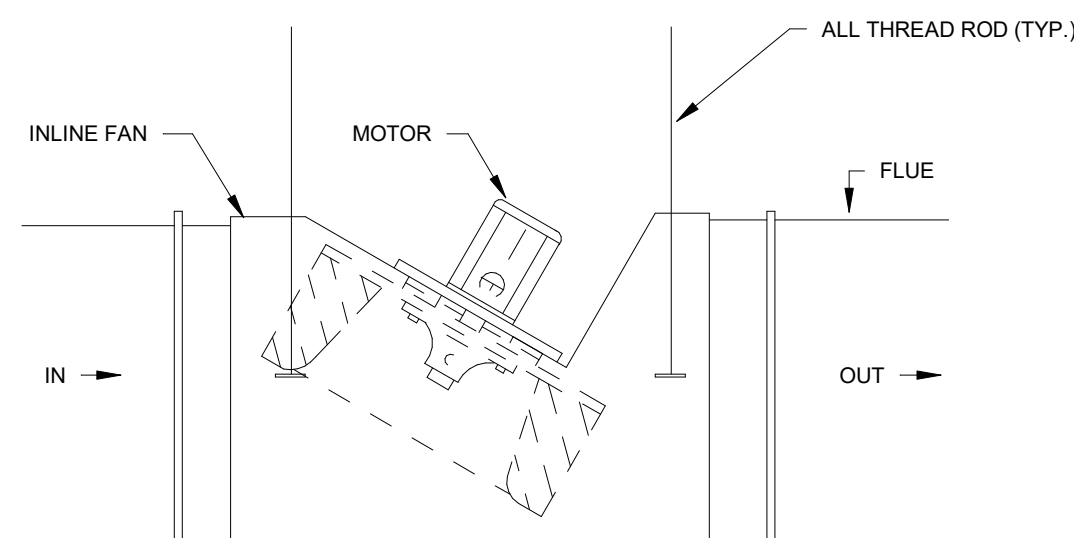
SOUTH WATER HEATER PIPING SCHEMATIC



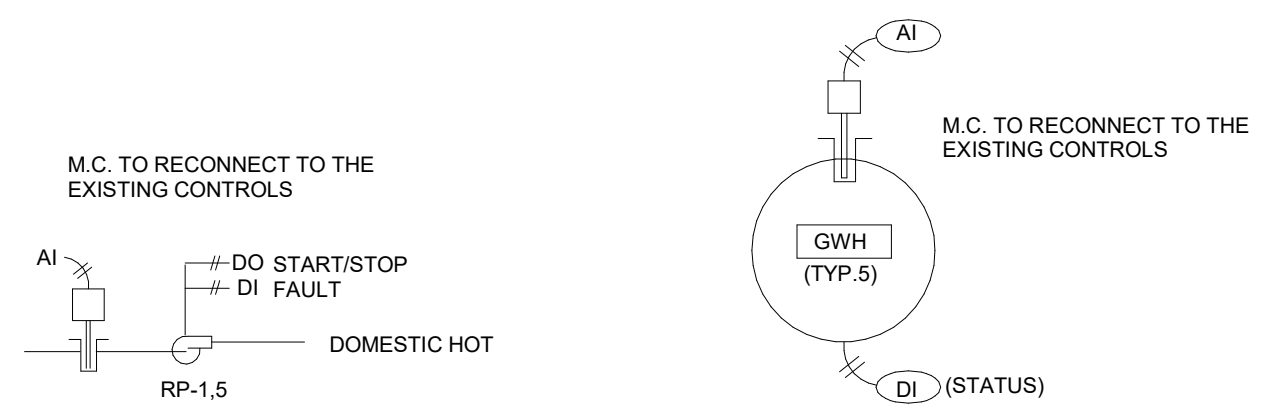
RECIRCULATING PUMP PIPING



GAS FIRED WATER HEATER PIPING



DRAFT INDUCER FAN



RECIRC PUMP TEMP CONTROLS

WATER HEATER TEMP CONTROL

PUMPS												
MARK	MFR.	MODEL	SERVICE	FLOW RATE (GPM)	HEAD (FT.)	EFFICIENCY	VOLUTE	IMPELLOR	HP	MOTOR RPM	VOLTAGE	NOTES (SEE BELOW)
RP-1	TACO	1819	RECIRC	20	45	35	2"x2"x2" 9"	6.75"	3/4	1760	115/1	1
RP-5	TACO	18011	RECIRC	10	20	--	1"x1"x3"	3"	1/8	3250	115/1	1
WHP-1	TACO	1935	RECIRC	90	15	59	2"x2"x6.15"	4.95"	3/4	1760	120/1	1
WHP-2	TACO	1935	RECIRC	90	15	59	2"x2"x6.15"	4.95"	3/4	1760	120/1	1
WHP-3	TACO	1935	RECIRC	75	12	54	2"x2"x6.15"	4.5"	1/2	1760	115/1	1
WHP-4	TACO	1935	RECIRC	75	12	54	2"x2"x6.15"	4.5"	1/2	1760	115/1	1
WHP-5	TACO	1935	RECIRC	85	15	59	2"x2"x6.15"	4.9"	3/4	1760	115/1	1
WHP-6	TACO	1935	RECIRC	75	12	54	2"x2"x6.15"	4.5"	1/2	1760	115/1	1
NOTES												
1. ALL DOMESTIC HOT WATER PUMPS SHALL BE BRONZE OR SS CONSTRUCTION												
2. VARIABLE FREQUENCY DRIVE. (BY T.C.C.)												
3. INTEGRAL TEMP. ELEMENT SET @ 140° F INTERLOCKED WITH DOM. HW BOLER												
4. 100% STAND-BY.												
5. PARALLEL PUMPS.												
6. SUBMERSIBLE PUMP WITH REMOTE VFD. VFD BY T.C.C.												
7. PUMP WITH INTEGRAL CHARGE VALVE.												

WATER HEATERS											
MARK	MFR.	MODEL	STORAGE CAPACITY (GAL.)	REC. RATE (GHP.)	WATER TEMP. RISE (F)	GAS INPUT (MBH)	VENTING (SEE NOTES BELOW)	IGNITION TYPE (SEE NOTES BELOW)	NOTES (SEE BELOW)	ELECTRICAL	
GWH-1	LOCHINVAR	PFN2001PM	2061	100	1999	1	3	1.3	120/1	17.1	17.1
GWH-2	LOCHINVAR	PFN2001PM	--	2061	100	1999	1	3	1.3	120/1	17.1
GWH-3	LOCHINVAR	PFN1302PM	--	1339	100	1300	1	3	1.3	120/1	12.4
GWH-4	LOCHINVAR	PFN1302PM	--	1339	100	1300	1	3	1.3	120/1	12.4
GWH-5	LOCHINVAR	PFN2001PM	--	2061	100	1999	1	3	2.3	120/1	17.1
GWH-6	LOCHINVAR	PFN1002PM	--	1030	100	999	1	3	1.3	120/1	12.4

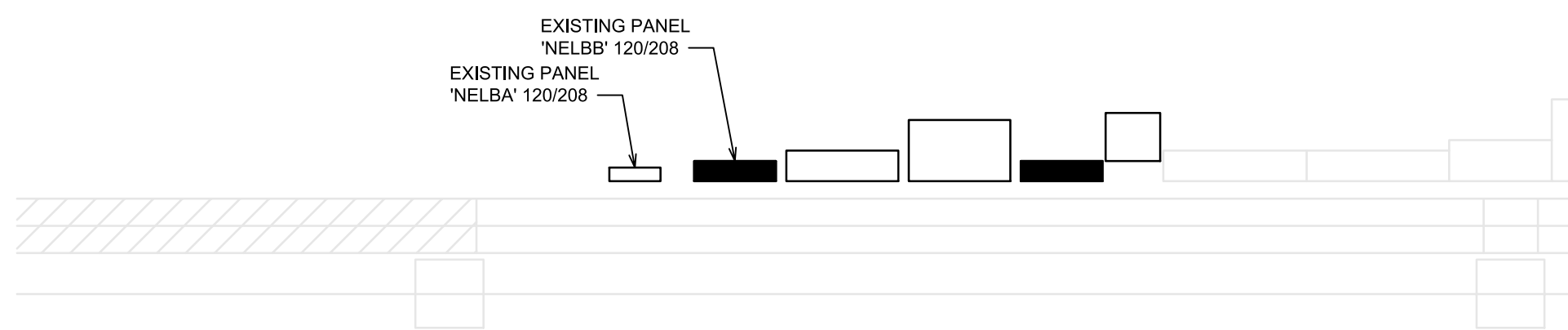
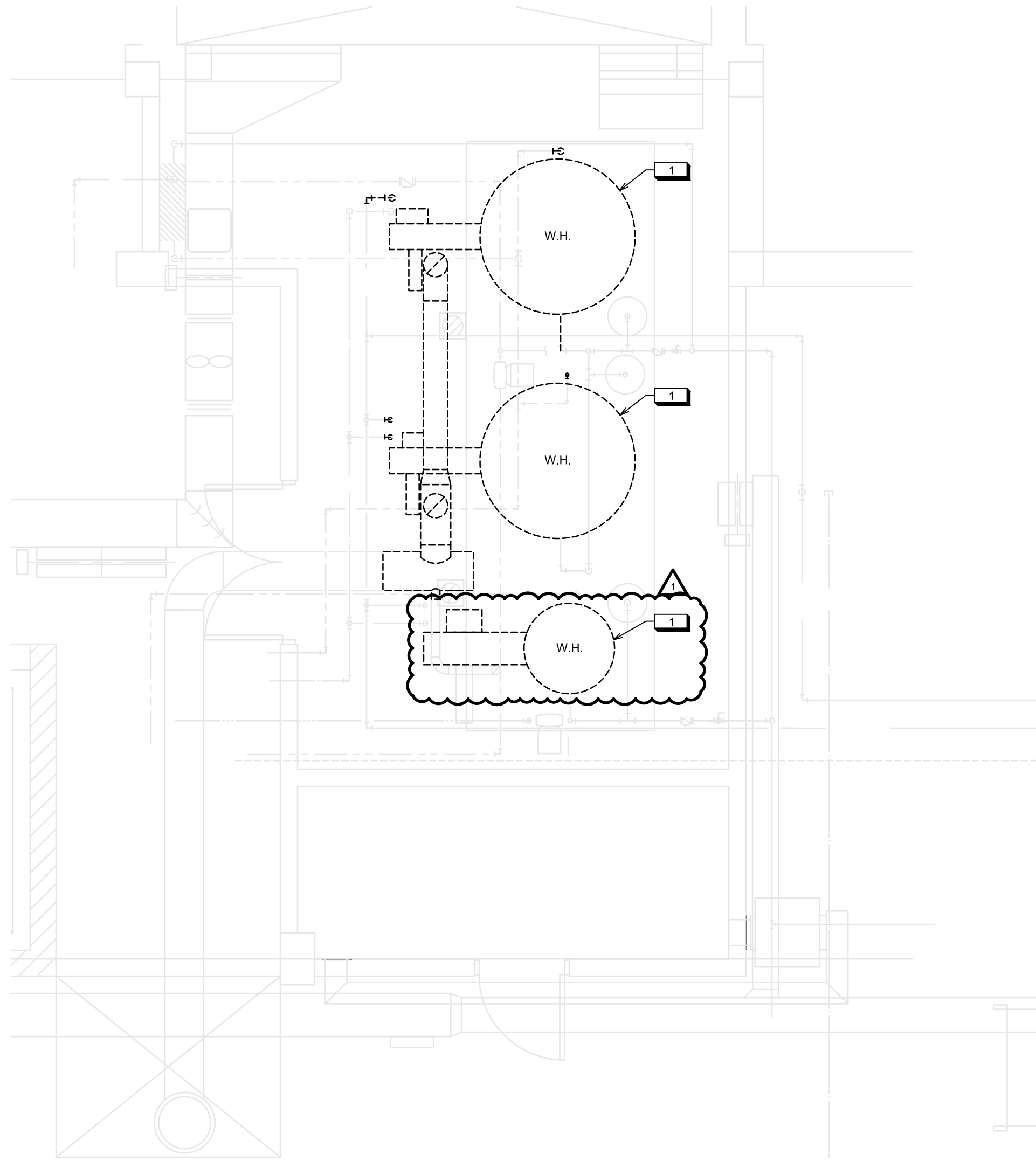
VENTING			IGNITION TYPES			NOTES		
1. CATEGORY III VENT. 2. CLOSED COMBUSTION - PVC VENT/INTAKE PIPING; SEE PLANS FOR PIPE SIZES. 3. PROVIDE WITH CONCENTRIC DIRECT VENT.			1. STANDING PILOT. 2. INTERMITTENT SPARK. 3. HOT SURFACE IGNITER.			1. SET TO PROVIDE 140°F HOT WATER. 2. SET TO PROVIDE 160°F HOT WATER. 3. ASME RATED.		

STORAGE TANKS											
MARK	MFR.	MODEL	SERVICE	ACTUAL CAPACITY (GALLONS)	INLET/OUTLET	DIMENSIONS (IN.)		DRAIN	NOTES (SEE BELOW)		
ST-1	LOCHINVAR	RG40940	DOM.	940	3" / 2"	52"	128"	1"	1		
ST-2	LOCHINVAR	RG40940	DOM.	940	3" / 2"	52"	128"	1"	1		
ST-3	LOCHINVAR	RG40940	DOM.	940	3" / 2"	52"	128"	1"	1		
ST-4	LOCHINVAR	RG40940	DOM.	940	3" / 2"	52"	128"	1"	1		
ST-5	LOCHINVAR	RG40257	DOM.	257	3" / 2"	34"	91"	1"	1		
ST-6	LOCHINVAR	RG40554	DOM.	554	3" / 2"	46"	92"	1"	1		

EXPANSION TANKS											
MARK	MFR.	MODEL	SERVICE	CAPACITY (GALLONS)	DIAMETER	HEIGHT	LENGTH	NOTES (SEE BELOW)			
ET-4	TACO	PAX300-150	DOM.	43	24"	5"	1	1			
ET-5	TACO	PAX300-150	DOM.	43	24"	5"	1	1			
ET-6	TACO	PAX170-150	DOM.	24	18"	66"	1	1			

BASE KIT, GREASE TROUGH, UNIT SHALL CARRY UL-702 LISTING FOR GREASE EXHAUST.	<u>FURNISHED BY VINEAS:</u>
11. SPARK-RESISTANT MOTOR.	A. ELECTRIC DISCONNECT BY E.C..
12. MODULATING CONTROL MODULE AND OVER-PRESSURE SWITCH BY MFG.	B. VFD PROVIDED BY T.C.C. ON RELIEF FANS (RF-X).

ACCESSORIES			FAN CONTROL TYPES			NOTES		
FURNISHED WITH UNIT (ALL UNITS) (FACTORY INSTALLED WHERE POSSIBLE): 1. EACH UNIT SHALL BE FURNISHED WITH A 14" HIGH PREMANUFACTURED ROOF CURB SLOPED TO MATCH ROOF FOR LEVEL FAN INSTALLATION. 2. ALL DIRECT DRIVE FANS SHALL BE FURNISHED WITH SPEED CONTROLLERS. 3. ELECTRIC DISCONNECT BY MFG. 4. METAL CEILING GRILLE. 5. MODULATING DRAFT CONTROL. 6. VIBRATION ISOLATORS WITH MOUNTING RAILS. 7. MODEL XXX ROOF JACK. 8. BIRD SCREEN. 9. FIRE RADIATION DAMPER. 10. FURNISHED WITH VENTED CURB EXTENSION, HINGED BASE KIT, GREASE TROUGH, UNIT SHALL CARRY UL-762 LISTING FOR GREASE EXHAUST. 11. SPARK RESISTANT MOTOR. 12. MODULATING CONTROL MODULE AND OVER-PRESSURE SWITCH BY MFG.			1. PILOT WALL SWITCH. 2. SWITCH WITH LIGHTS. 3. TIME CLOCK. 4. THERMOSTAT. 5. CONTINUOUS OPERATION. 6. INTERLOCK WITH KITCHEN EQUIPMENT. 7. INTERLOCK WITH DISHWASHER CONTROL CIRCUIT. 8. INTERLOCK WITH K&N HOOD. 9. BUILDING CONTROL SYSTEM. 10. INTERLOCK WITH DRYER. 11. FAN TO BE ELECTRICALLY INTERLOCKED EITHER THE ASSOCIATED AHU AND TERMINAL UNITS (IAV) AND/OR PP/AV FOR OPERATION WHEN EXHAUST IS ACTIVATED. 12. MODULATING PRESSURE CONTROL.			1. BELT DRIVE FAN SELECTIONS SHALL ACCOUNT FOR DRIVE LOSSES. 2. SEE SPECIFICATIONS FOR FAN TYPES. 3. ALL SWITCHES, INTERLOCKS, RELAYS, TRANSFORMERS, TIME CLOCKS, MOTOR STARTER, LINE VOLTAGE THERMOSTATS, ETC., BY E.C. UNLESS NOTED OTHERWISE.		
FURNISHED BY OTHERS: A. ELECTRIC DISCONNECT BY E.C. B. VFD PROVIDED BY T.C.C. ON RELIEF FANS (IRF-X).								

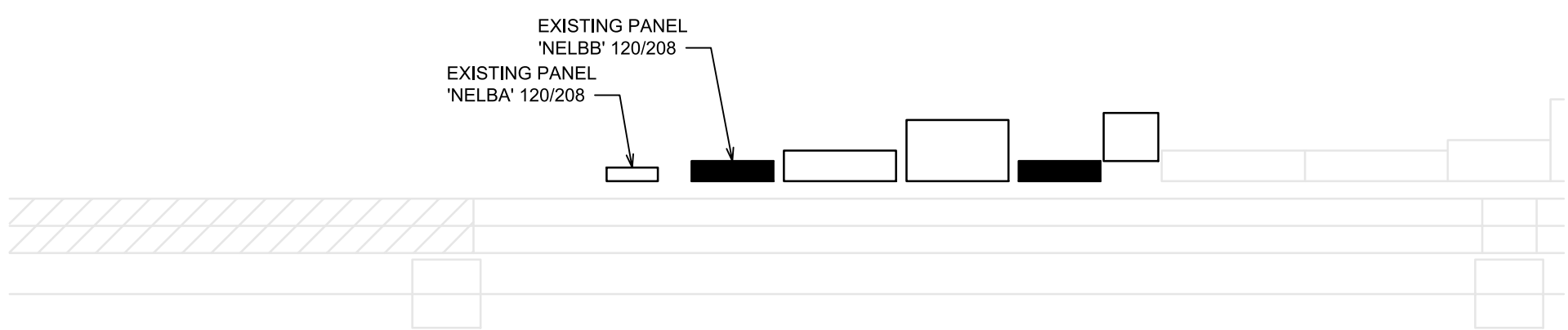
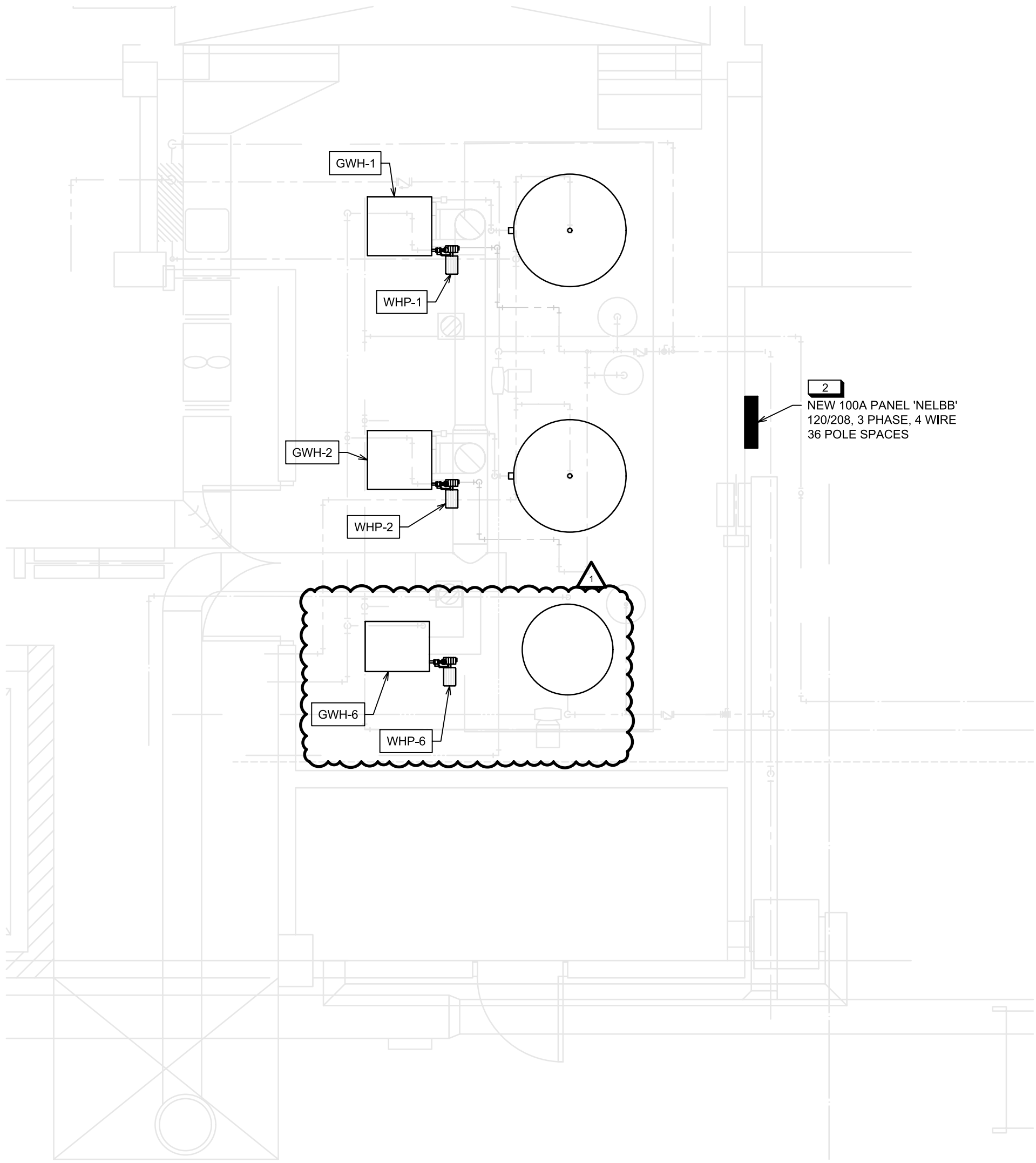


A NORTH ELECTRICAL ROOM DEMO PLAN

0 2' 4' 8'

SCALE: 1/4" = 1'-0"

NORTH



B NORTH ELECTRICAL ROOM POWER PLAN

0 2' 4' 8'

SCALE: 1/4" = 1'-0"

NORTH

PLAN NOTES	
ICE	
SYMBOL	DESCRIPTION
1	REMOVE EXISTING ELECTRICAL CIRCUIT AND FEEDER BACK TO POINT OF SUPPLY - LABEL BREAKER AS SPARE.
2	NEW PANEL, PROVIDE (12) 201P BREAKERS FOR WATER HEATER PUMPS AND SPARES. SUPPLY PANEL WITH 4 #2 AND 1 #6 GRD IN 1-1/4" CONDUIT. ROUTE TO NEW 100A 3-POLE BREAKER IN EXISTING SQUARE D 4 LINE PANEL. NELD: ANY DOWN TIME TO INSTALL BREAKER TO BE DONE AT TIME APPROVED BY THE OWNER. ROUTE 2 #12 AND 1 #12 GRD IN 1/2" CONDUIT TO EACH WATER HEATER AND PUMP. PROVIDE FUSESTAT FOR EACH CIRCUIT AT EQUIPMENT LOCATION.

