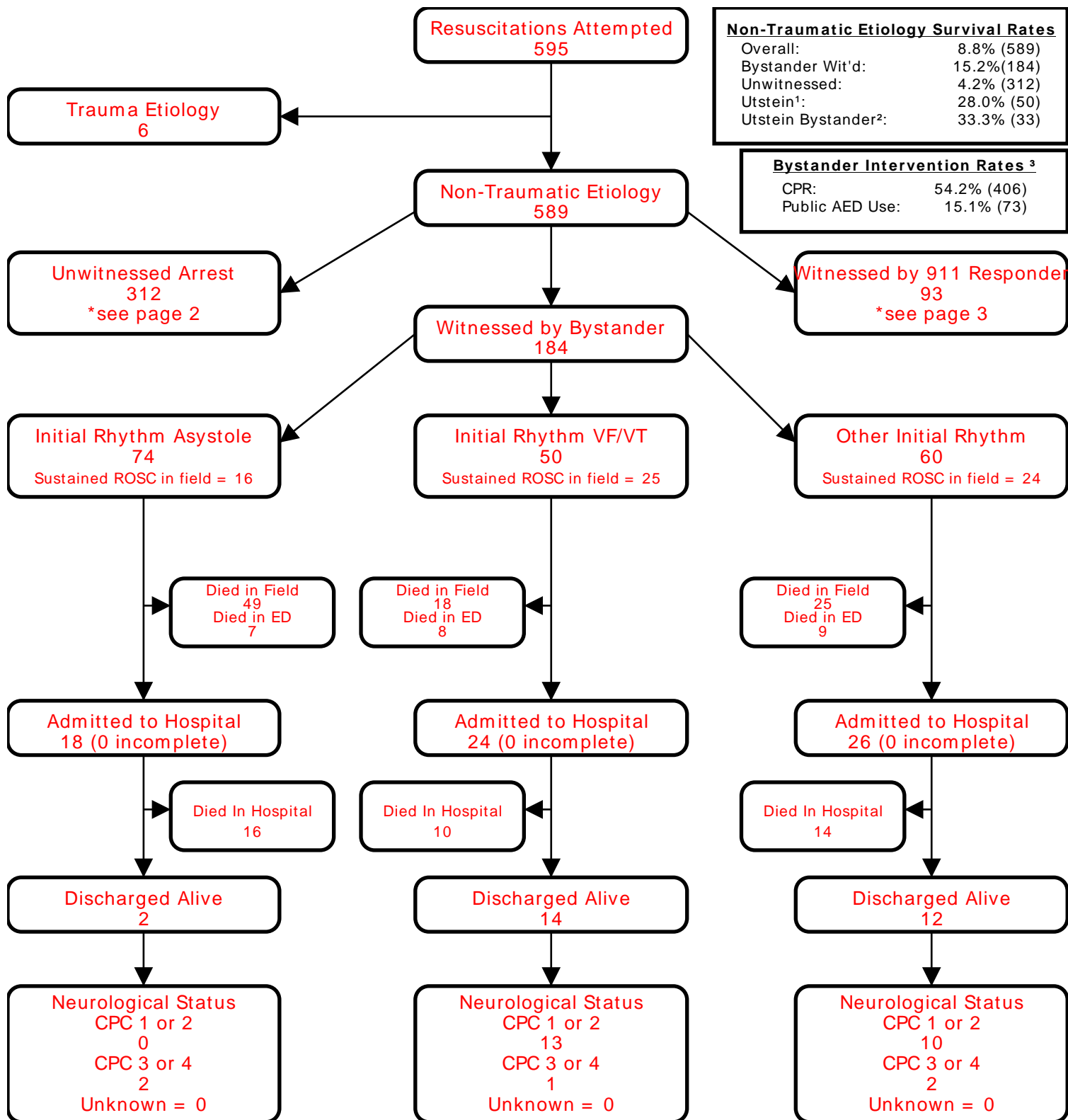


Utstein Survival Report

Sedgwick County EMS

Date of Arrest: 01/01/24-12/31/24



Non-Traumatic Etiology Survival Rates	
Overall:	8.8% (589)
Bystander Wit'd:	15.2% (184)
Unwitnessed:	4.2% (312)
Utstein ¹ :	28.0% (50)
Utstein Bystander ² :	33.3% (33)

Bystander Intervention Rates ³	
CPR:	54.2% (406)
Public AED Use:	15.1% (73)

¹Utstein: Witnessed by bystander and found in shockable rhythm.

²Utstein Bystander: Witnessed by bystander, found in shockable rhythm, and received some bystander intervention (CPR and/or AED application).

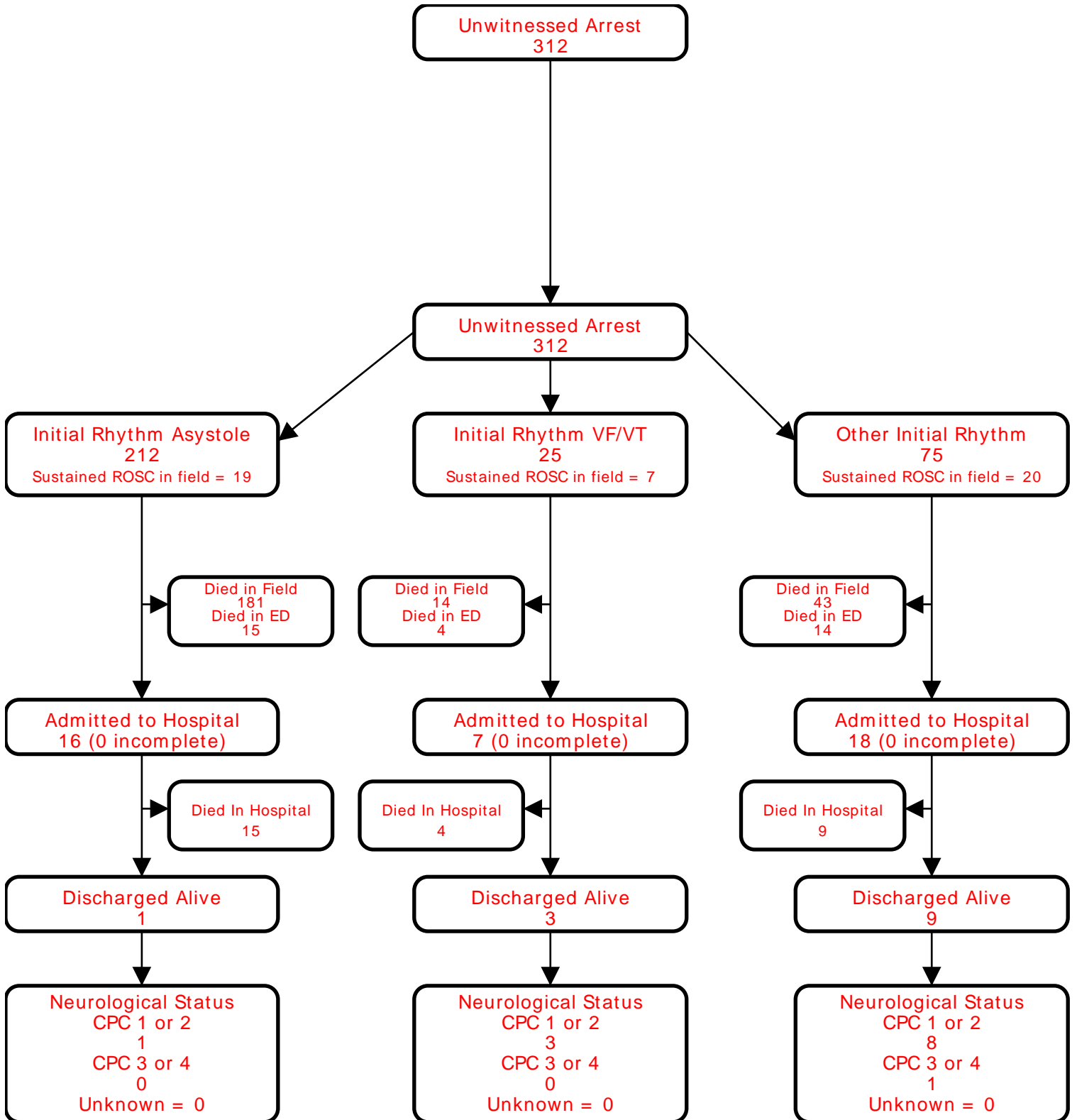
³Bystander CPR rate excludes 911 Responder Witnessed, Nursing Home, and Healthcare Facility arrests. Public AED Use rate excludes 911 Responder Witnessed, Home/Residence, Nursing Home, and Healthcare Facility arrests.

*Only data from the previous calendar year is fully audited. Data from the current calendar year is dynamic.

Utstein Survival Report

Sedgwick County EMS

Date of Arrest: 01/01/24-12/31/24



Utstein Survival Report

Sedgwick County EMS

Date of Arrest: 01/01/24-12/31/24

