

Sedgwick County



EMS

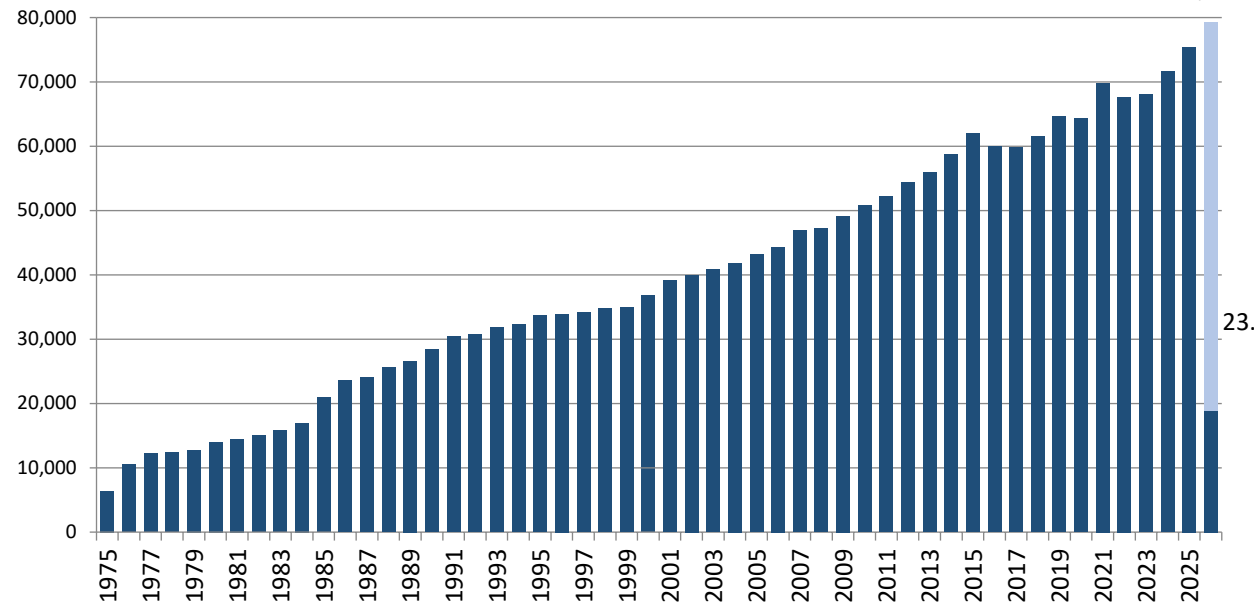


Monthly
Operations Report
March 2026

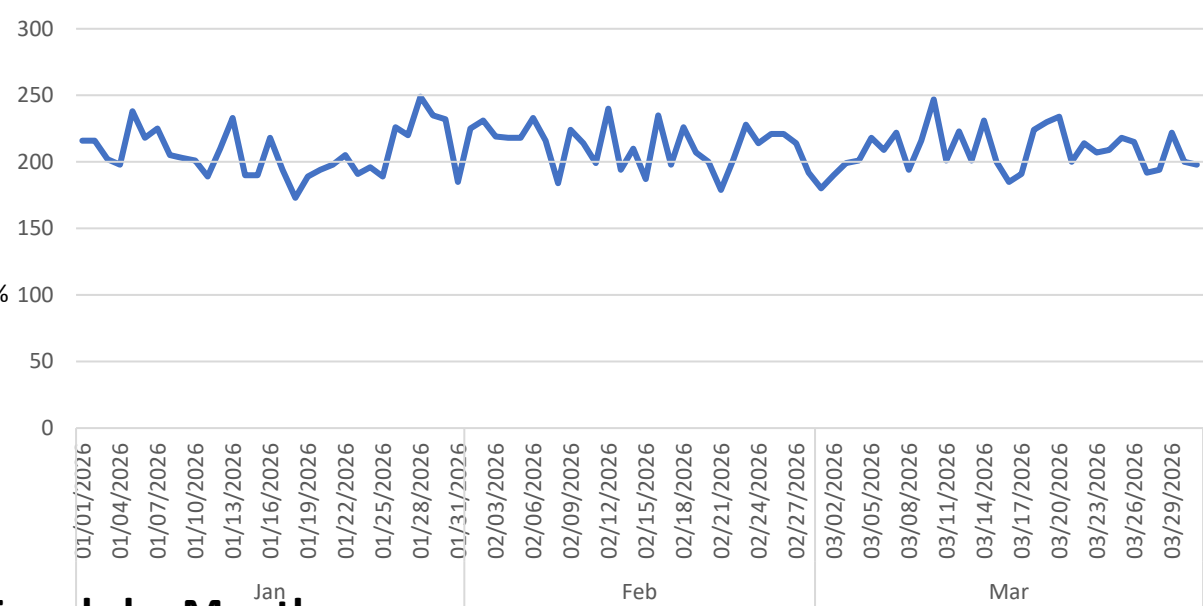
Prepared by Victor Okwo
EMS Systems & Chief Data Officer
April 10, 2026

Call Volume & Response Time

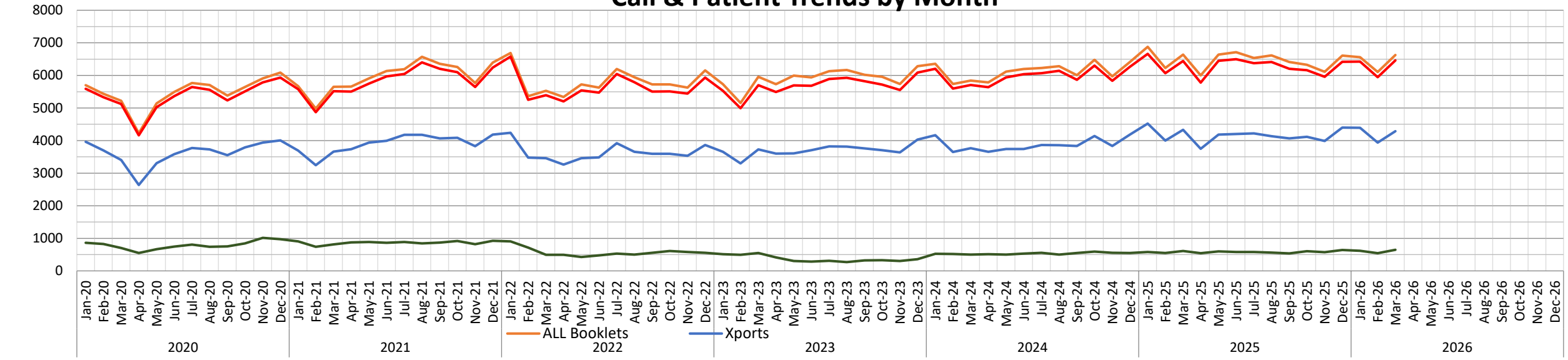
Annual Call Volume



Calls by Day



Call & Patient Trends by Month



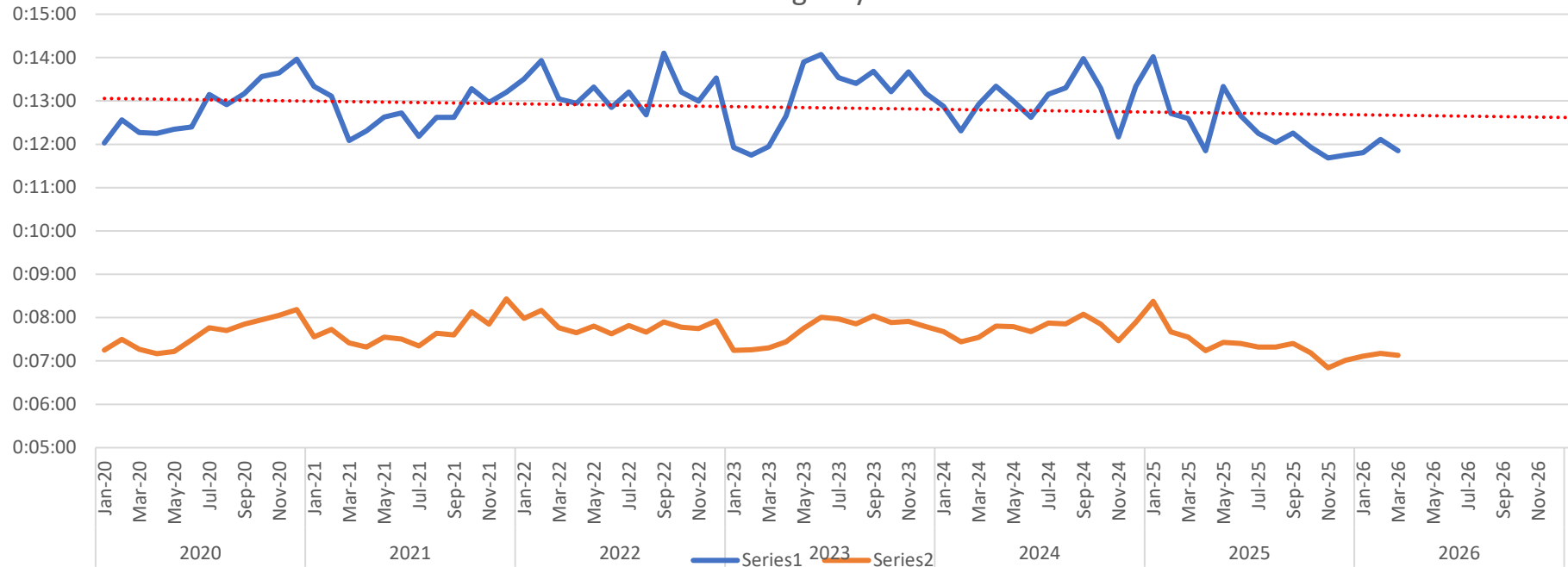
All Calls			Valid Calls			Transports				Non-Emergency		
Row Labels	Count of Call #	Avg/Day	Row Labels	Count of Call #		Row Labels	Count of Call #	Txport %	Txport Valid %	Row Labels	Count of Call #	Avg/Day
Jan	6424	207	Jan	5746	89.4%	Jan	4391	68.4%	76.4%	Jan	614	20
Feb	5948	212	Feb	5299	89.1%	Feb	3937	66.2%	74.3%	Feb	544	19
Mar	6464	209	Mar	5732	88.7%	Mar	4287	66.3%	74.8%	Mar	645	21
Apr			Apr			Apr				Apr		
May			May			May				May		
Jun			Jun			Jun				Jun		
Jul			Jul			Jul				Jul		
Aug			Aug			Aug				Aug		
Sept			Sept			Sept				Sept		
Oct			Oct			Oct				Oct		
Nov			Nov			Nov				Nov		
Dec			Dec			Dec				Dec		
Grand Total	18836	209	Grand Total	16777	89.1%	Grand Total	12615	67.0%	75.2%	Grand Total	1803	20

CRV		
Row Labels	Count of Call #	Avg/Day
Jan	19	0.6
Feb	24	0.9
Mar	25	0.8
Apr		
May		
Jun		
Jul		
Aug		
Sept		
Oct		
Nov		
Dec		
Grand Total	68	0.8

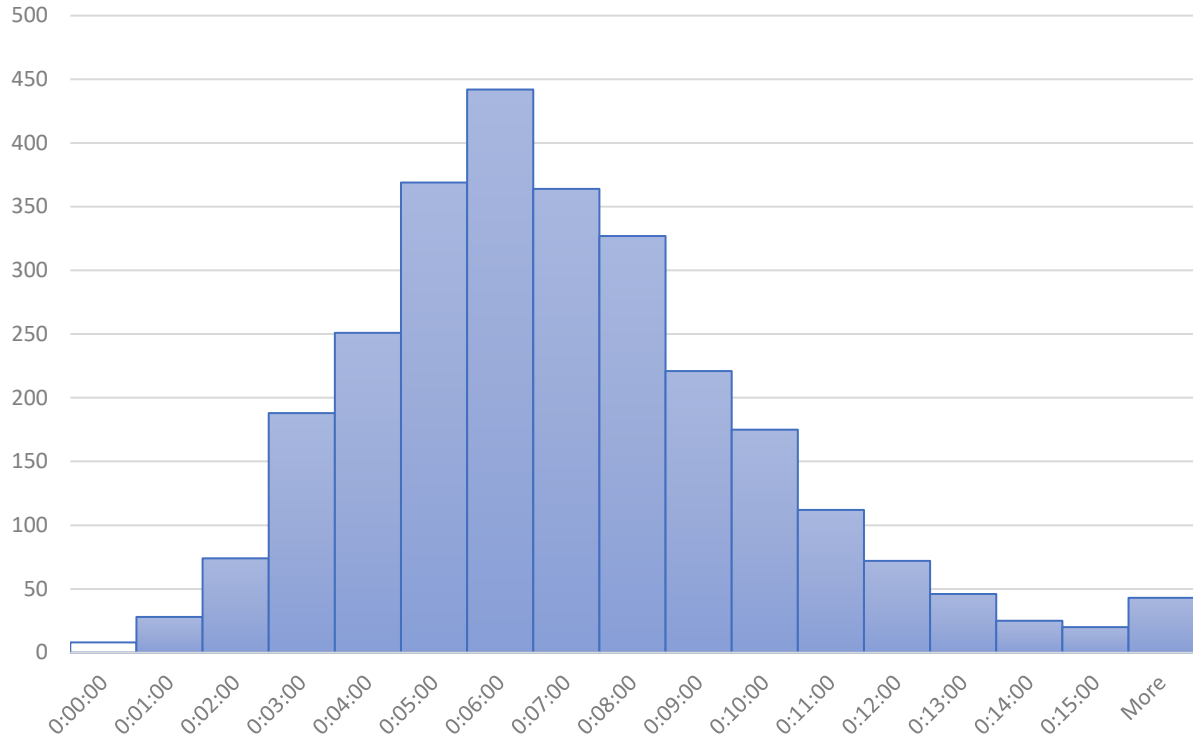
RT All Calls		
	Average of RT	90th %
Jan	0:07:07	0:12:19
Feb	0:07:06	0:12:23
Mar	0:07:12	0:13:18
Apr		
May		
Jun		
Jul		
Aug		
Sept		
Oct		
Nov		
Dec		
Grand Total	0:07:09	0:12:25

RT P1 & P2 (Lights & Sirens)		
	Average of RT	90th %
Jan	0:06:35	0:10:45
Feb	0:06:33	0:10:55
Mar	0:06:29	0:10:32
Apr		
May		
Jun		
Jul		
Aug		
Sept		
Oct		
Nov		
Dec		
Grand Total	0:06:32	0:10:44

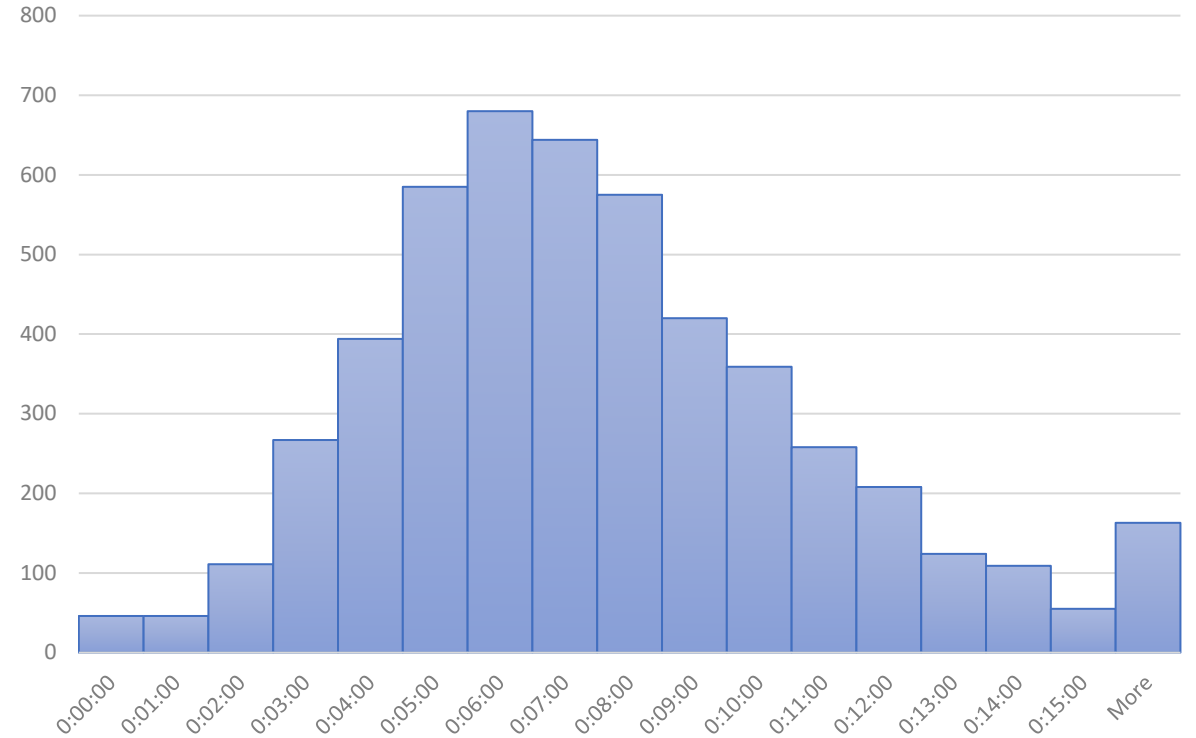
90th Percentile Response Time (RT)
All Emergency Calls



P1 - 2 Response Time (RT), March 2026



P1 - P6 RT, March 2026



P1-P2 = Emergency, lights & sirens response
 P3-P6 = Emergency, no lights & sirens response

"More" includes times where units stand-off due to scene safety

Response times (RT) are measured from dispatch to arrival on scene. EMS responds to calls using lights and sirens on Priority 1 and 2 emergency calls only, which was 55% of emergency calls in March.

Staffing & Workload

Scheduled Unit Hours = 12,648

Produced Unit Hours = 12,350 (98%)

Sedgwick County EMS Resource Deployment Schedule

revised January 2, 2024

	Unit	Post	Sunday		Monday		Tuesday		Wednesday		Thursday		Friday		Sunday	
Ambulance	21	11														
	22	12														
	26	14														
	27	16														
	31	20														
	32	2														
	33	3	0600-1800	1800-0600	0600-1800	1800-0600	0600-1800	1800-0600	0600-1800	1800-0600	0600-1800	1800-0600	0600-1800	1800-0600	0600-1800	1800-0600
	34	4														
	35	5														
	36	6														
	37	7														
	38	8														
	39	9														
		25	45	0800-2000		0800-2000		0800-2000		0800-2000		0800-2000		0800-2000		0800-2000
	29	5	0800-2000		0800-2000		0800-2000		0800-2000		0800-2000		0800-2000		0800-2000	
	42	14	1000-2200		1000-2200		1000-2200		1000-2200		1000-2200		1000-2200		1000-2200	
	43	20	1000-2200		1000-2200		1000-2200		1000-2200		1000-2200		1000-2200		1000-2200	
	23	10	1200-0000		1200-0000		1200-0000		1200-0000		1200-0000		1200-0000		1200-0000	
	41	15	1200-0000		1200-0000		1200-0000		1200-0000		1200-0000		1200-0000		1200-0000	
	28	10	1500-0300		1500-0300		1500-0300		1500-0300		1500-0300		1500-0300		1500-0300	
	24	12	1500-0300		1500-0300		1500-0300		1500-0300		1500-0300		1500-0300		1500-0300	
	45-46 (surge)	20	Varies		Varies		Varies		Varies		Varies		Varies		Varies	
DC	1	3	0600-1800	1800-0600	0600-1800	1800-0600	0600-1800	1800-0600	0600-1800	1800-0600	0600-1800	1800-0600	0600-1800	1800-0600	0600-1800	1800-0600
	2	5	0600-1800	1800-0600	0600-1800	1800-0600	0600-1800	1800-0600	0600-1800	1800-0600	0600-1800	1800-0600	0600-1800	1800-0600	0600-1800	1800-0600
	3	10	1000-2200		1000-2200		1000-2200		1000-2200		1000-2200		1000-2200		1000-2200	
CRV	81	81	0600 - 1800		0600 - 1800		0600 - 1800		0600 - 1800		0600 - 1800		0600 - 1800		0600 - 1800	
	82	B1 → 82	0600 - 1800		0600 - 1800		0600 - 1800		0600 - 1800		0600 - 1800		0600 - 1800		0600 - 1800	
FR	11	B1	Varies		Varies		Varies		Varies		Varies		Varies		Varies	

DC = District Chief
CRV = Community Response Vehicle

ALS First Response Vehicle Uptime			
	CRV 81 (Clearwater)	CRV 82 (Cheney)	Ambulances
Hours Scheduled	372	372	12,648
Hours staffed	363.5	363	12,350
Percentage staffed	98%	98%	98%

Monthly Unit On Duty %

