



Station 31

ANDALE

6331 N. 247th St. W., Andale

Station 31 is the newest station in Sedgwick County Fire District 1, built in 2021. The station provides fire service to the City of Andale.



QUICK STATS:

Opened:

2021

Total Square Feet:

9,500 sq. ft.

Calls Responded to in 2025:

90

Busiest Month in 2025:

September

EQUIPMENT





Station 32

PARK CITY AND KECHI
7750 N. Wyandotte Way, Park City

Station 32 provides protection for Park City as well as north central and northeast Sedgwick County. In addition to traditional fire service, Station 32 also houses the Technical Rescue Response Team. This specialized group of firefighters responds to emergency calls involving confined spaces, high-angle, standing/swift water, trench cave-ins and building collapses.

Station 32 is also home to the department administrative offices which includes the Fire Chief and Deputy Chiefs, the Community Risk Reduction Division, the Medical Division and clerical staff.



Aid Agreements

SCFD1 has a mutual aid agreement with Valley Center Fire Department, and Station 32 can be requested to assist on any call (including medical) that stretches VCFD resources.

QUICK STATS:

Opened:
May, 2008

Total Square Feet:
26,250 sq ft (including admin)

Calls Responded to in 2025:
1,490

Busiest Month in 2025:
March

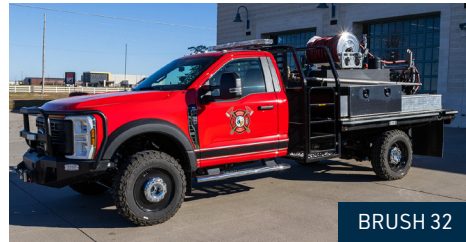
EQUIPMENT



QUINT 32



TENDER 32



BRUSH 32



BATTALION 32



SQUAD 32



HEAVY RESCUE 32



RESCUE TRAILER



RESCUE BOATS



Station 33

MAIZE

10625 W 53rd St. North, Maize

Station 33 provides fire protection to the City of Maize, Bentley and portions of Union Township. The Hazardous Material Team responds from Station 33 as well. This specialized team is part of a larger local task force comprised of members from Sedgwick County Fire District 1, the Wichita Fire Department, Sedgwick County Emergency Management, and the Sedgwick County Health Department. Personnel from all four agencies may respond in the event of a large-scale incident.



Aid Agreements

SCFD1 has a mutual aid agreement with Colwich Fire Department, and Station 33 can be requested to assist on any call (including medical) that stretches Colwich Fire Department resources.

QUICK STATS:

Opened:
2007

Total Square Feet:
9,720 sq. ft.

Calls Responded to in 2025:
1,439

Busiest Month in 2025:
June

EQUIPMENT



ENGINE 33



HAZMAT 33



SQUAD 33



TENDER 33



Station 34

HAYSVILLE
334 N. Main, Haysville

Station 34 provides fire protection to the City of Haysville. This station has five bays and covers a response area of 91 square miles with both rural and urban areas. Two of the biggest hazardous materials manufacturers in the County are in the service area of Station 34.



Aid Agreements

SCFD1 has a mutual aid agreement with Clearwater Fire Department, and Station 34 can be requested to assist on any call (including medical) that stretches Clearwater Fire Department resources.

QUICK STATS:

Opened:

2014

Total Square Feet:

12,130 sq. ft.

Calls Responded to in 2025:

2,341

Busiest Month in 2025:

October

EQUIPMENT





Station 35

GODDARD

1535 S. 199th St. W., Goddard

Station 35 provides protection for both urban and rural areas in Goddard and other parts of western Sedgwick County. EMS Post 7 is also located in the building. Station 35 is one of three SCFD1 stations with rescue boats.



QUICK STATS:

Opened:
2010

Total Square Feet:
11,900 sq. ft.

Calls Responded to in 2025:
959

Busiest Month in 2025:
January

EQUIPMENT



QUINT 35



TENDER 35



SQUAD 35



INFLATABLE RESCUE BOAT



FLAT BOTTOM RESCUE BOAT



Station 36

OAKLAWN

5055 S Oliver St, Wichita

Station 36 has four bays and covers a response area of 80 square miles with both rural and urban areas. This station provides fire protection for Oaklawn as well as the unincorporated areas of southeast Sedgwick County. In addition, Station 36 has an automatic aid agreement and is automatically dispatched within the agreement area to assist Derby Fire and Rescue Department, Butler County Fire District #3, Rose Hill and McConnell Air Force Base. EMS Post 16 is also located in the building.



Station 36 is also the site of the future SCFD1 Training Grounds.

QUICK STATS:

Opened:

2013

Total Square Feet:

9,720 sq. ft.

Calls Responded to in 2025:

1,275

Busiest Month in 2025:

October

EQUIPMENT



ENGINE 36



BRUSH 36



TENDER 36



SQUAD 36



Station 37

BEL AIRE AND KECHI
4343 N. Woodlawn Blvd., Bel Aire

Built in 1973, Station 37, the Raymond A. Davis Station, is the oldest fire station in Sedgwick County. The station has six bays and covers a response area of 30.91 square miles that includes Bel Aire and Kechi. This station formerly housed the administrative offices and currently houses the training facilities for SCFD1.



QUICK STATS:

Opened:
1973

Total Square Feet:
7,700 sq. ft.

Calls Responded to in 2025:
2,176

Busiest Month in 2025:
March

EQUIPMENT



ENGINE 37



MOBILE AIR 37



BRUSH 37



TENDER 37



SQUAD 37



Station 38

NORTHEAST WICHITA
1010 N. 143rd St. E., Wichita

Station 38 has six bays and covers a response area of 21 square miles. This station is unique within SCFD1 in that it mainly covers urban areas in northeast Wichita. Wichita Fire Department Squad 6 is also housed in this building.

Station 38 has an automatic aid agreement (is automatically dispatched within the agreement area) with Andover Fire and Rescue Department and Butler County Fire District 3, Rose Hill. This station also provides first response on medical calls within the city limits of Wichita.



QUICK STATS:

Opened:

1986

Total Square Feet:

8,500 sq. ft.

Calls Responded to in 2025:

1,081

Busiest Month in 2025:

September

EQUIPMENT



ENGINE 38



BRUSH 38



Station 39

GARDEN PLAIN

3610 S. 263rd St. West, Garden Plain

Station 39 provides protection to Garden Plain, Viola and the western portions of the Fire District, including Lake Afton and Lake Waltanna. The station has four bays and covers a response area of 98 square miles with both urban and rural areas. Station 39 is one of three SCFD1 stations with a rescue boat.



QUICK STATS:

Opened:

2009

Total Square Feet:

9,720 sq. ft.

Calls Responded to in 2025:

313

Busiest Month in 2025:

July

EQUIPMENT



ENGINE 39



BRUSH 39



INFLATABLE RESCUE BOAT