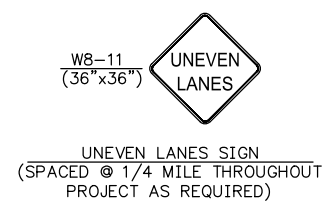
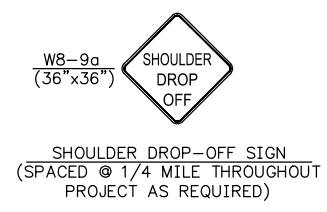
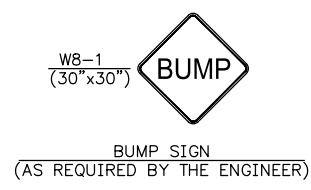
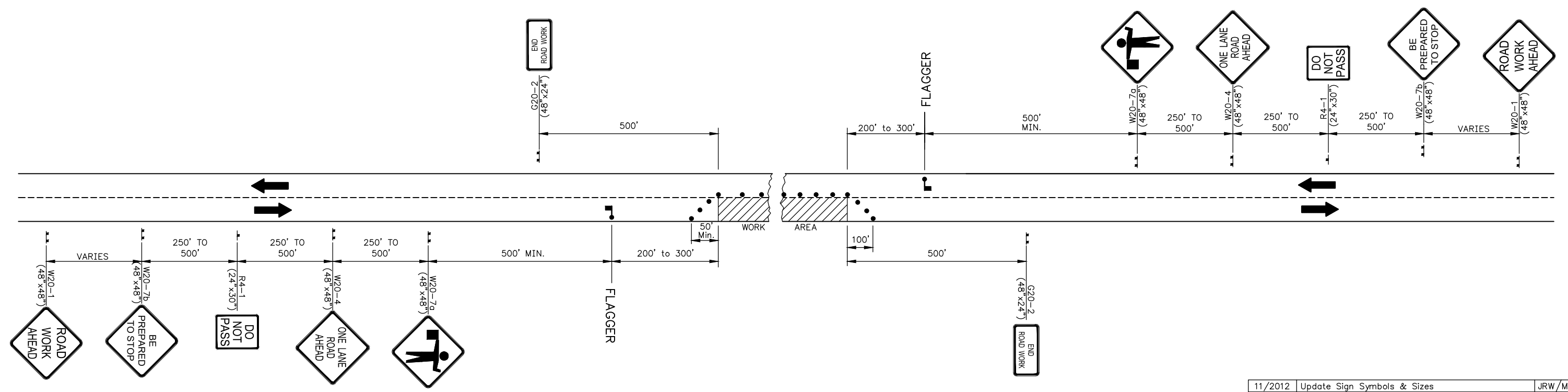


COUNTY	STATE	PROJECT NUMBER	FISCAL YEAR	SHEET NO.	TOTAL SHEETS
SEDGWICK	KANSAS	R175	----	T-3	----



LIST OF TRAFFIC CONTROL DEVICES *							
MUTCD DEVICE NO.	NO.	FLASHERS		REMARKS	DELINEATORS & CHANNELIZATION DEVICES		
		TYPE A	TYPE B		DEVICE	NO.	SIZE
				TYPE A	TYPE B	TYPE C	
W20-1	2						
W20-7b	2						
R4-1	2						
W20-4	2						
W20-7a	2						
G20-2	2						
G20-4	1						
W8-9a							
W8-11							
W8-1							
* FOR INFORMATION ONLY							See Sheet Nos. SheetNumber & SheetNumber for Traffic Control Notes.



**TRAFFIC CONTROL PLAN
FOR HANDLING TRAFFIC THROUGH CONSTRUCTION
TO BE USED ONLY WITH A PILOT CAR**

NOTES:

Flagger ahead (W20-7a, symbolic) sign shall be used ONLY when a flagger is present. At all other times this sign shall be covered or removed.

Flaggers shall comply with the "Handbook For Flaggers" State of Kansas (latest edition).

On roadways utilizing a flagger, additional flaggers and W20-7a signs may be required when traffic volumes, especially during peak hours, are such that approaching traffic will not have adequate advance warning or when traffic is backed up more than fifteen hundred (1500') feet from the flagger station.

- Channelization devices.

11/2012	Update Sign Symbols & Sizes	JRW /MRB
5/2009	Update Sign Symbols	DRS /MRB
Rev.Date	Description	By /Chk

**TRAFFIC CONTROL PLAN
FOR ONE LANE CLOSED ON A TWO-LANE
ROADWAY USING A PILOT CAR**

TC 6-0

PREPARED BY
SEDGWICK COUNTY PUBLIC WORKS
HIGHWAY DEPARTMENT

LYNN T. PACKER, P.E. DIRECTOR/COUNTY ENGINEER

SCALE	DESIGNED	DRAWN	CHECKED	SHEET NO.
NONE	M.R.B.	D.R.S.	M.R.B.	T-3
DATE	6/1988	4/2005	4/2005	

DWG: TC6

Device: AutoCAD PDF (General Documentation).pc3 Page Setup: ---- By: Salmans, John
\\dtopw\cadd\Blocks\STANDARDS\TC6.dwg Layout: TC-6 Plotted: 3/27/2023 2:18 PM